

QUANTITIES			
ITEMS	EST'D	AS-BUILT	SUPPLIER
8" Sewer (PVC)	821 L.F.	814 L.F.	Municipal Contractor Sales, Inc.
MANHOLES	6 EA	6 EA	Affonco Precast
8" SEWER (D.I.P.)	1039 L.F.	225 L.F.	Municipal Contractor Sales, Inc.
6" SEWER (PVC)	115 L.F.	110 L.F.	Municipal Contractor Sales, Inc.
1" W.H.C. (Copper)	120 L.F.	120 L.F.	Municipal Contractor Sales, Inc.
3/4" W.H.C. (Copper)	138 L.F.	138 L.F.	Municipal Contractor Sales, Inc.
6" WATER	39 L.F.		
6" FIRE HYD.	15A.		
6" VALVE & VAULT	15A.		

**BENCH MARKS**

**BM # 3** ELEV. 421.13  
RAILROAD SPIKE IN 6" E POLE NO 168237 EAST SIDE MONTGOMERY ROAD, APPROX. 600- FEET NORTHWEST OF STONECREST DRIVE.

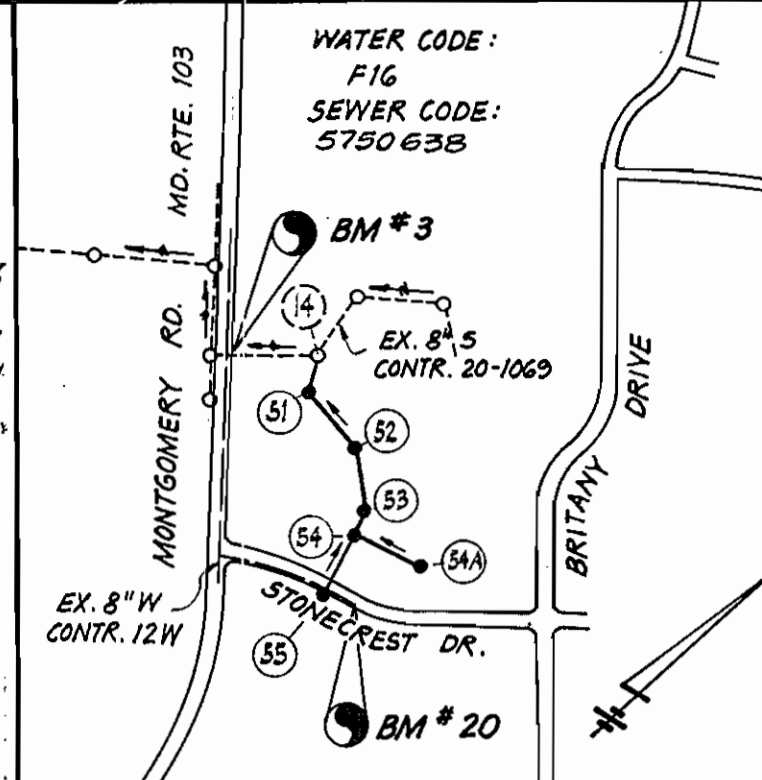
**BM # 20** ELEV. 444.35  
"P.K. NAIL IN STONECREST DRIVE, 0.3- FEET FROM SOUTH SIDE EDGE OF ROAD, 30- FT. FROM WEST END OF 15" C.M.P., 40- FT. FROM EAST END OF 15" C.M.P.

**GENERAL NOTES**

- THE APPROXIMATE LOCATION OF EXISTING UTILITIES ARE SHOWN. THE CONTRACTOR SHALL TAKE ALL NECESSARY PRECAUTIONS TO PROTECT EXISTING MAINS AND SERVICES AND MAINTAIN UNINTERRUPTED SUPPLY. ANY DAMAGE INCURRED SHALL BE REPAIRED IMMEDIATELY TO THE SATISFACTION OF THE ENGINEER AT THE CONTRACTORS EXPENSE.
- ALL PIPE ELEVATIONS SHOWN ARE INVERT ELEVATIONS, UNLESS OTHERWISE INDICATED.
- THE CONTRACTOR SHALL LOCATE EXISTING UTILITIES A MINIMUM OF TWO WEEKS IN ADVANCE OF CONSTRUCTION OPERATIONS IN THE VICINITY OF THE PROPOSED UTILITIES. AT HIS OWN EXPENSE, ANY CONFLICTS SHALL BE IMMEDIATELY REPORTED TO THE ENGINEER.
- ALL MATERIALS AND CONSTRUCTION SHALL BE PERFORMED IN ACCORDANCE WITH THE HOWARD COUNTY DESIGN MANUAL, VOL. II STANDARD SPECIFICATIONS AND DETAILS FOR CONSTRUCTION.
- CLEAR ALL UTILITIES BY A MINIMUM OF 6 INCHES, CLEAR ALL POLES BY 2'-0" MIN. OR TUNNEL, AS REQUIRED, ANY COSTS INCURRED TO THE CONTRACTOR FOR TUNNELING OR BRACING AT POLES SHALL BE INCLUDED IN THE UNIT PRICE BID FOR PIPE INSTALLATION AS APPLICABLE.

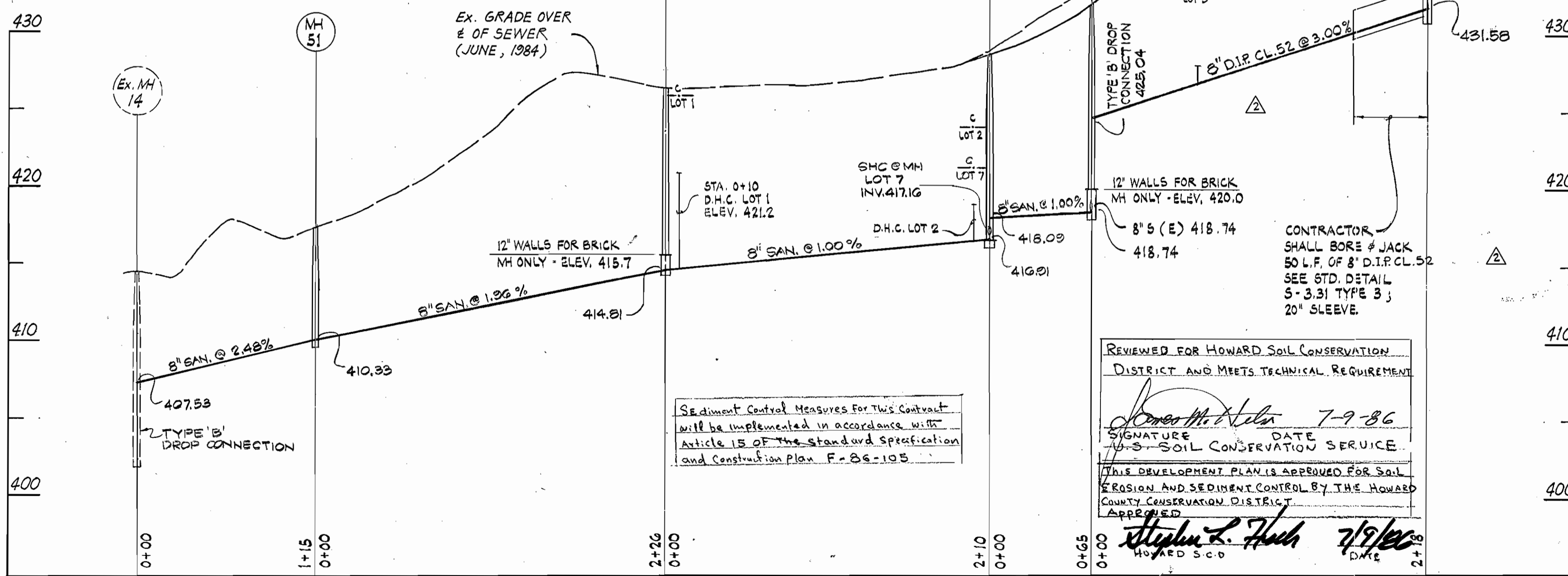
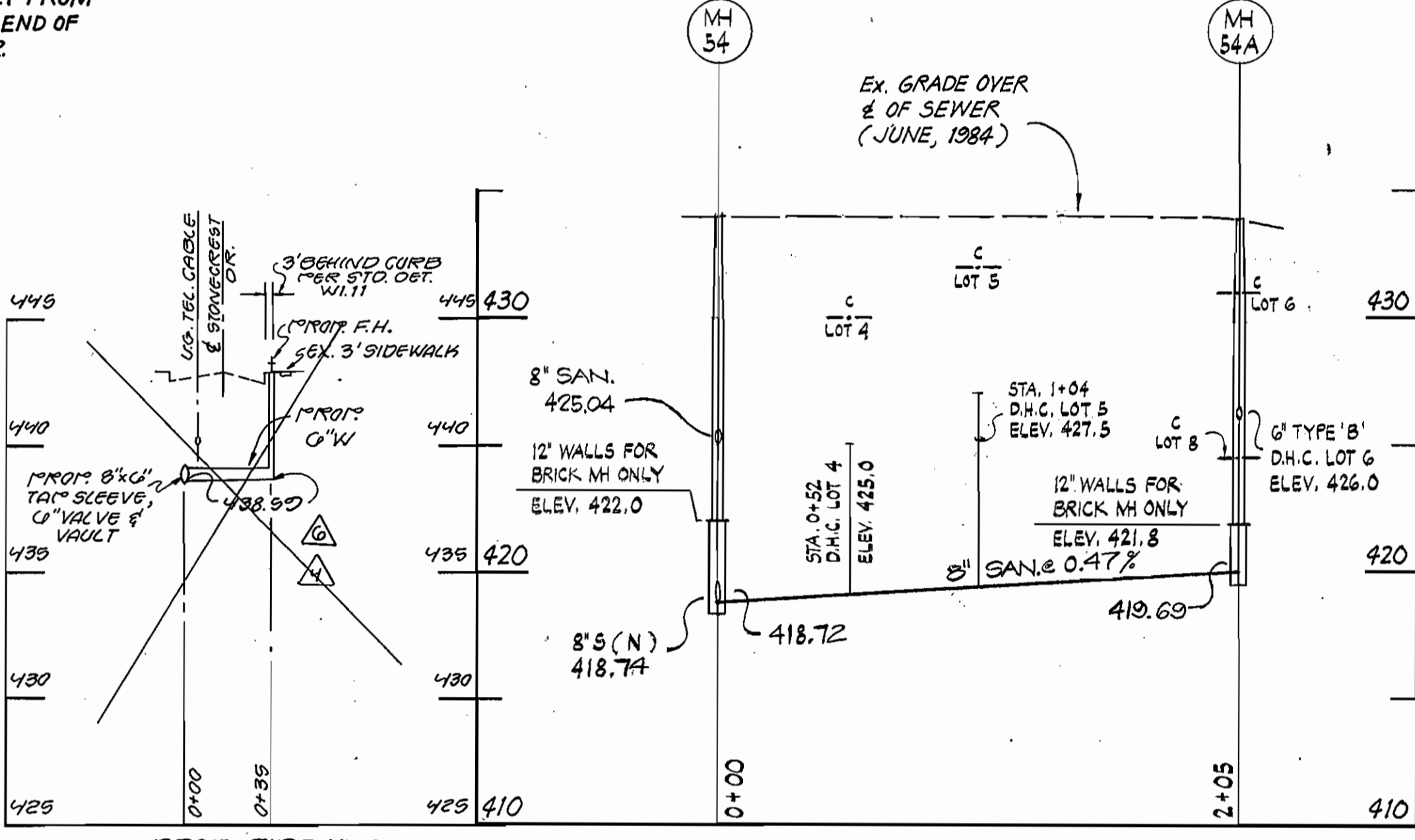
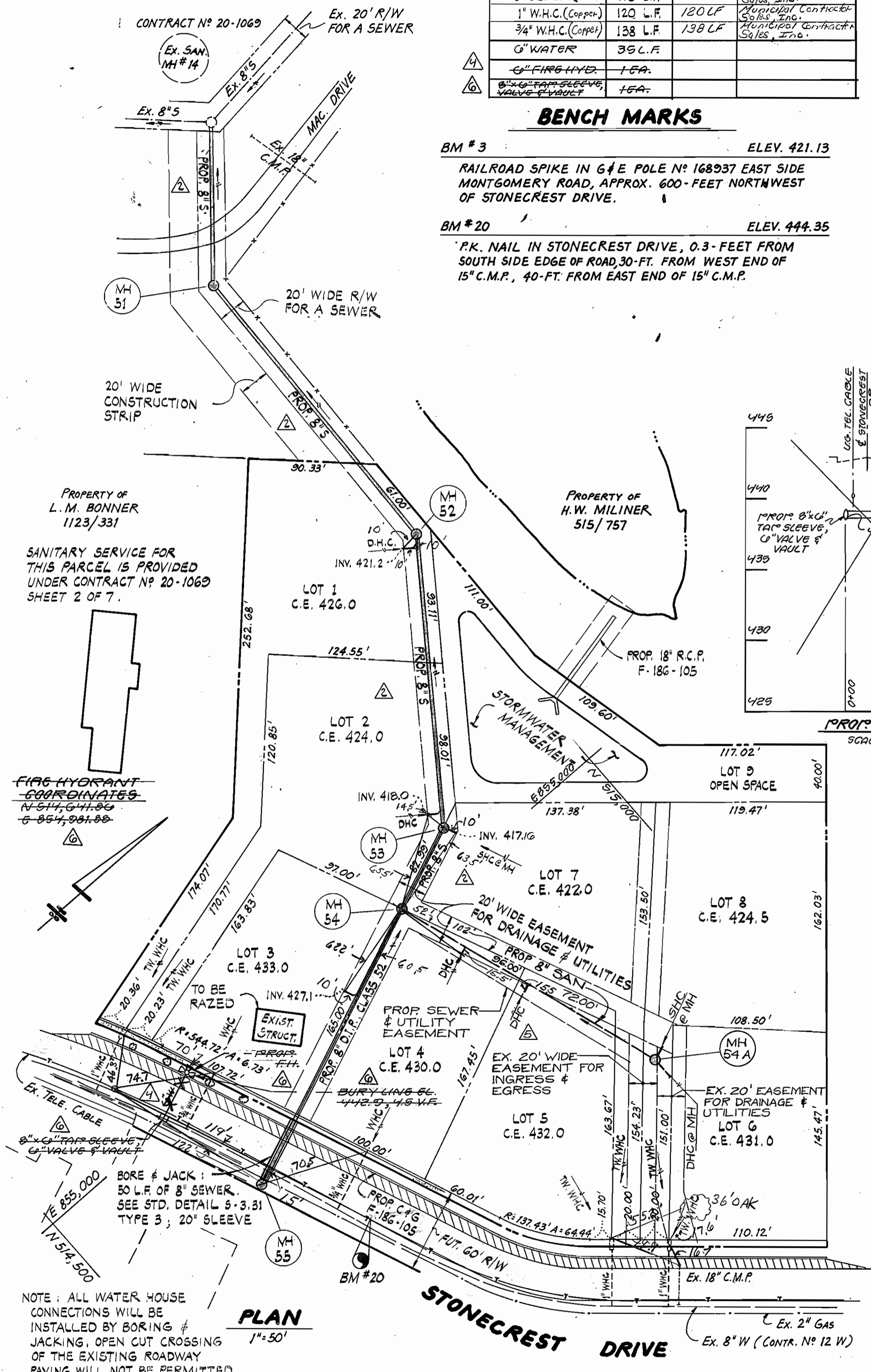
**GENERAL NOTES**

- THE CONTRACTOR SHALL PROVIDE IN ALL SEWER MAINS A JOINT, WITHIN 2'-0" OF EXTERIOR MANHOLE WALLS.
- ALL MANHOLES SHALL BE 4'-0" INSIDE DIAMETER, UNLESS OTHERWISE NOTED.
- TREES ARE TO BE PROTECTED FROM DAMAGE TO MAXIMUM EXTENT, TREES LOCATED WITHIN THE CONSTRUCTION STRIPS ARE NOT TO BE REMOVED OR DAMAGED BY THE CONTRACTOR.
- CONTRACTOR SHALL NOTIFY THE FOLLOWING UTILITIES OR AGENCIES AT LEAST FIVE WORKING DAYS BEFORE STARTING WORK ON THESE PLANS:  
STATE HIGHWAY ADMIN.: 531-5533  
B.G. & E. CO. (CONTRACTOR SERVICES) 261-2585  
B.G. & E. CO. (UNDERGROUND DAMAGE CONT.) 234-5021  
B.G. & E. CO. (TROUBLE SHOOTING) 298-9013  
MISS. UTILITY: 1-559-1990  
COLONIAL PIPELINE CO.: 795-1300  
BUREAU OF UTILITIES, HOWARD COUNTY DRW.: 292-2366
- ALL SEWER MAINS SHALL BE C.S.P.X., V.C.P.X., A.C.P., CLASS 2400, D.I.P. OR P.V.C. UNLESS OTHERWISE NOTED.
- ALL HORIZONTAL CONTROLS ARE BASED ON MARYLAND STATE DATUM.
- ALL VERTICAL CONTROLS ARE BASED ON U.S.G.S. DATUM.
- CONTRACTOR SHALL REMOVE & DISPOSE OF TREES, STUMPS AND ROOTS ALONG LINE OF EXCAVATION, PAYMENT FOR SUCH REMOVAL AND DISPOSAL SHALL BE INCLUDED IN THE UNIT PRICE BID FOR PIPE INSTALLATION AS APPLICABLE.
- PLACE REGULATION "MEN WORKING" AND WARNING SIGNS AS WELL AS OTHER REQUIREMENTS NECESSARY TO COMPLY WITH MARYLAND STATE HIGHWAY ADMINISTRATION MANUAL OF TRAFFIC CONTROL FOR HIGHWAY CONSTRUCTION & MAINTENANCE OPERATIONS.
- "A" DENOTES ASSUMED ELEVATION.
- ALL WATER HOUSE CONNECTIONS SHALL BE FOR AN INSIDE METER SETTING.
- THE CONTRACTOR SHALL NOT OPERATE ANY WATER MAINS VALVES ON THE EXISTING SYSTEM.
- FOR ALL COPPER WATER HOUSE CONNECTIONS, UTILIZE FLARED TYPE FITTINGS ONLY.
- ALL FITTINGS SHALL BE BUTTRESSED OR ANCHORED WITH CONCRETE IN ACCORDANCE WITH THE STANDARD DETAILS UNLESS OTHERWISE NOTED.



**VICINITY MAP**  
1" = 600'

TYPE OF BUILDING: SINGLE FAMILY RESIDENTIAL  
NUMBER OF LOTS: 9 (8 BUILDABLE)  
NO OF WATER HOUSE CONNECTIONS: 8  
NO OF SEWER HOUSE CONNECTIONS: 8  
DRAINAGE AREA: ROUT 108 PUMPING STATION



**PROFILES**

HORIZ: 1"=50'  
VERT: 1"=5'

REVIEWED FOR HOWARD SOIL CONSERVATION DISTRICT AND MEETS TECHNICAL REQUIREMENT

Signature: *James M. Allen* DATE: 7-9-86  
SOIL CONSERVATION SERVICE

Signature: *Stephen L. Hush* DATE: 7/9/86  
HOWARD S.C.D.

NOTE: ALL WATER HOUSE CONNECTIONS WILL BE INSTALLED BY BORING & JACKING, OPEN CUT CROSSING OF THE EXISTING ROADWAY PAVING WILL NOT BE PERMITTED.

DEPARTMENT OF PUBLIC WORKS  
HOWARD COUNTY, MARYLAND

Robert W. Wood, Director of Public Works  
DATE: 7/10/86

Chief, Bureau of Engineering  
DATE: 7/16/86

Chief, Land Development Division  
DATE: 7/16/86

HICKS ENGINEERING COMPANY, INC.  
CIVIL ENGINEERS

200 EAST JOPPA ROAD  
SUITE 402  
TOWSON, MD 21204

DES: TAW / REC	E.A.S.	DATE	REVISION
	DELETED FIRE HYDRANT, PROFILE, QUANTITIES	11/20/81	
	REVISED PLAN & PROFILE MH 54 TO MH 54A	12/3/80	
	ADDED FIRE HYD., PROFILE, QUANTITIES	01/01/80	
	REVISED PLAN & PROFILE MH 54 TO MH 54A	4/22/87	
	REVISED PLAN & PROFILE	3/11/87	
	REVISED PROFILE	2/27/87	

PLAN & PROFILE  
WATER & SEWER MAINS

CONTRACT NO. 24-1461-D

600' SCALE MAP NO. 31 BLOCK NO.

STONEBROOKE SUBDIVISION  
LOTS 1 THROUGH 9

STONECREST DRIVE @ MONTGOMERY ROAD  
ELECTION DISTRICT NO. 2  
HOWARD COUNTY, MARYLAND

SCALE AS SHOWN  
SHEET 1 OF 1