

BENCH MARK

B.M.#1 ELEV. 370.40

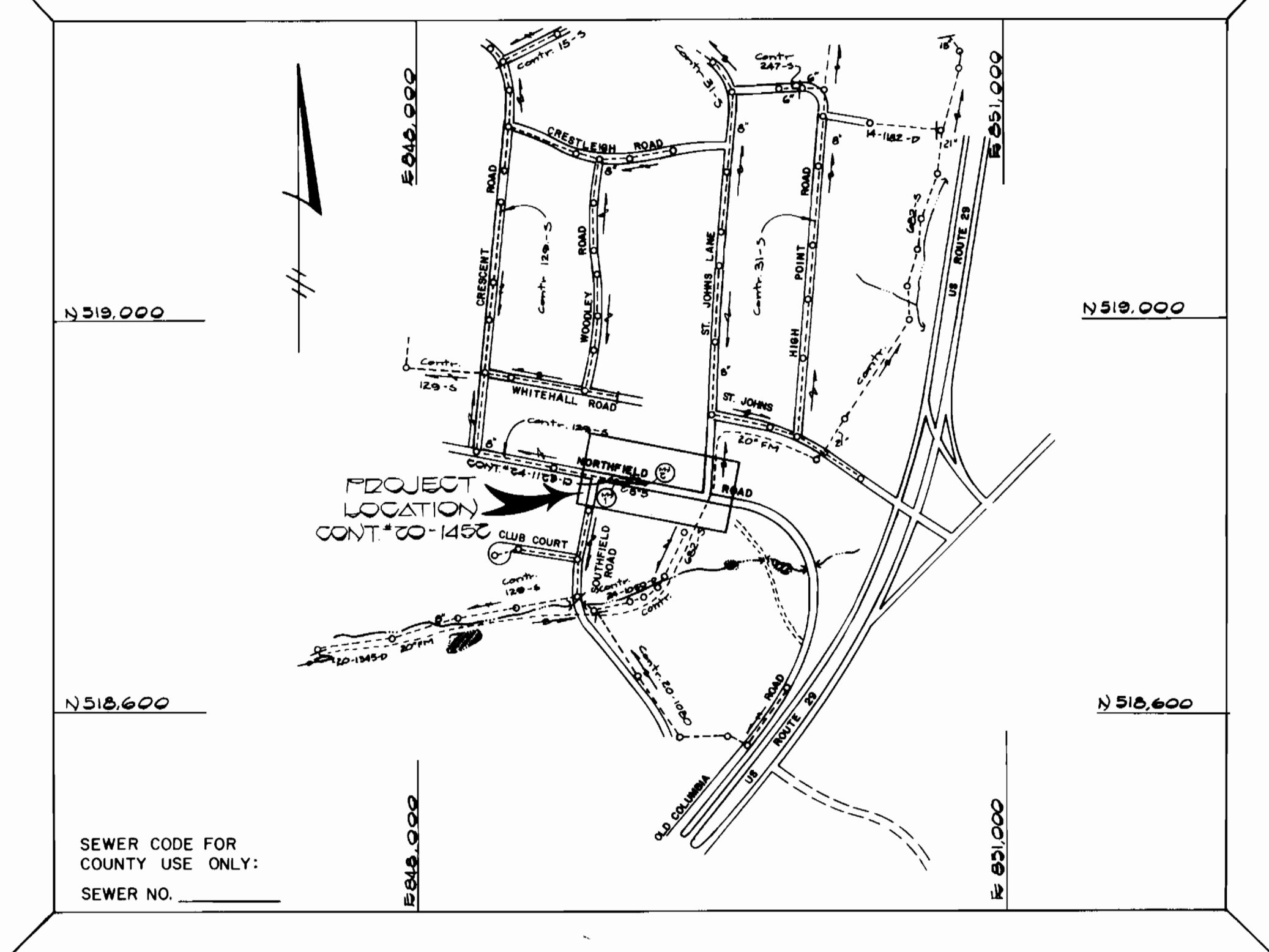
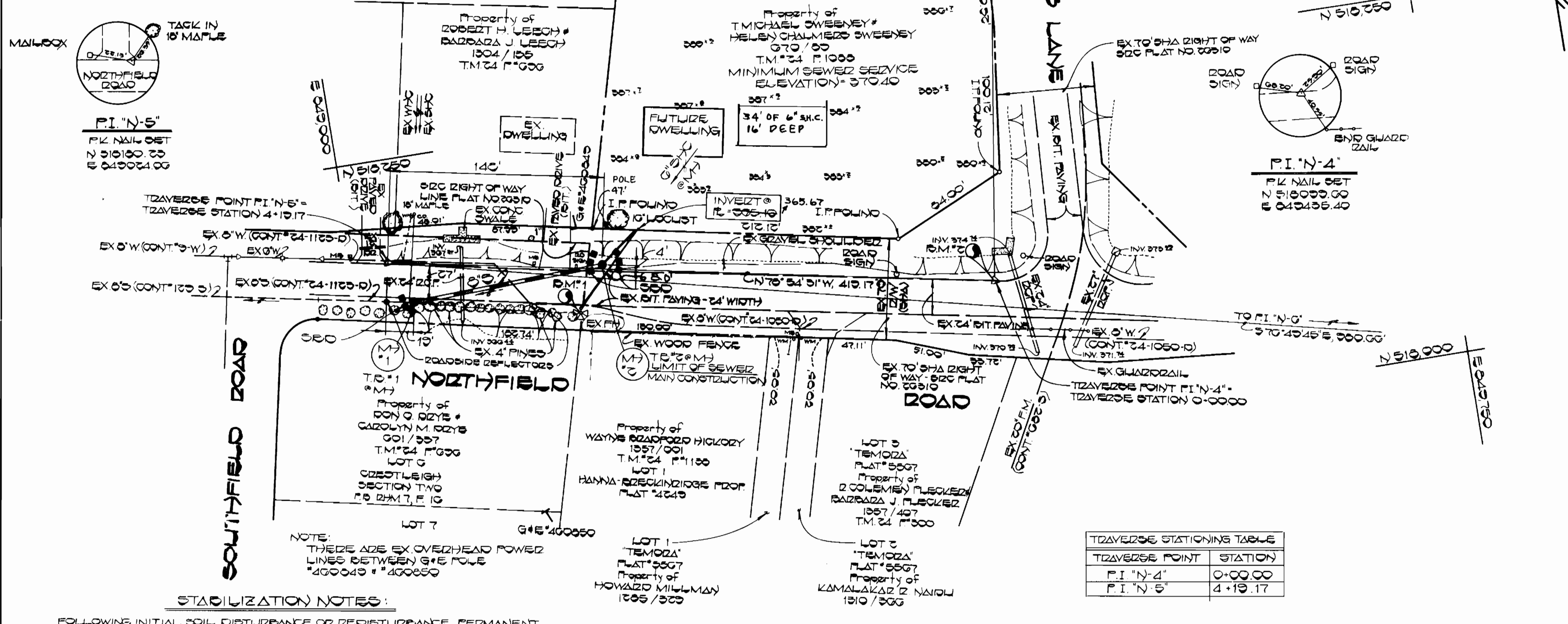
X-CUT ON ROADSIDE FLANGE BOLT ON EX. FIRE HYDRANT, 100' SOUTHEAST OF T&W STA. N-5

B.M.#2 ELEV. 361.02

FLZ NAIL SET @ EDGE OF PAVING, NORTHWEST CORNER OF INTERSECTION OF ST. JOHN'S LANE & NORTHFIELD ROAD, 10' SOUTH OF EXISTING CONCRETE HEADWALL

NOTE: THE MINIMUM SEWER SERVICE ELEVATION SHOWN IS INDICATED UPON THE FUTURE DWELLING BEING SITUATED UPON THE WESTERN HALF OF PARCEL 1000, IN ORDER TO ACCOMMODATE POSSIBLE FUTURE SUBDIVISION.

NOTE: PARCEL 1000 HAS RECEIVED WATER & SEWER SERVICE LINKED PREVIOUS CONTRACTS



SEWER CODE FOR COUNTY USE ONLY:
SEWER NO. _____

TYPE OF BUILDING: SINGLE FAMILY
NUMBER OF LOTS: 1
NO. OF SEWER HOUSE CONNECTIONS: 1
DRAINAGE AREA: LITTLE PATENT

VICINITY MAP
SCALE: 1" = 600'

GENERAL NOTES

- APPROXIMATE LOCATION OF EXISTING MAINS ARE SHOWN. THE CONTRACTOR SHALL TAKE ALL NECESSARY PRECAUTIONS TO PROTECT EXISTING MAINS AND SERVICES AND MAINTAIN UNINTERRUPTED SUPPLY. ANY DAMAGE INCURRED SHALL BE REPAIRED IMMEDIATELY TO THE SATISFACTION OF THE ENGINEER AT THE CONTRACTOR'S EXPENSE.
- ALL HORIZONTAL CONTROLS ARE BASED ON MARYLAND STATE COORDINATES.
- ALL VERTICAL CONTROLS ARE BASED ON U.S.G.S. DATA.
- ALL PIPE ELEVATIONS SHOWN ARE INVERT ELEVATIONS.
- CLEAR ALL UTILITIES BY A MINIMUM OF 6"
- FOR DETAILS NOT SHOWN ON THE DRAWINGS, AND FOR MATERIALS AND CONSTRUCTION METHODS, USE HOWARD COUNTY DESIGN MANUAL, VOLUME IV, STANDARD SPECIFICATIONS AND DETAILS FOR CONSTRUCTION. THE CONTRACTOR SHALL HAVE A COPY OF VOLUME IV ON THE JOB.
- WHERE TEST PITS HAVE BEEN MADE ON EXISTING UTILITIES THEY ARE NOTED BY THE SYMBOL [] AT THE LOCATION OF THE TEST PIT. A NOTE OR NOTES CONTAINING THE RESULTS OF THE TEST PIT OR PITS IS INCLUDED ON THE DRAWINGS. EXISTING UTILITIES IN THE VICINITY OF THE PROPOSED WORK FOR WHICH TEST PITS HAVE NOT BEEN DUG SHALL BE VERIFIED BY THE CONTRACTOR TO HIS OWN SATISFACTION. ANY DAMAGE TO EXISTING FACILITIES, DUE TO THE CONTRACTOR'S NEGLIGENCE SHALL BE REPAIRED AT THE CONTRACTOR'S EXPENSE.
- CONTRACTOR SHALL NOTIFY THE FOLLOWING UTILITIES OR AGENCIES AT LEAST FIVE WORKING DAYS BEFORE STARTING WORK SHOWN ON THESE PLANS:
 - STATE HIGHWAY ADMINISTRATION - 531-5533
 - BALTIMORE GAS & ELECTRIC CO. - CONTRACTOR SERVICES 561-2585
 - BALTIMORE GAS & ELECTRIC CO. - UNDER GROUND DAMAGE CONTROL - 234-5621
 - BALTIMORE GAS & ELECTRIC CO. - TROUBLE SHOOTING - 298-9013
 - MISS UTILITY - 1-559-0100
 - COLONIAL PIPELINE CO. - 795-1390
 - BUREAU OF UTILITIES, HOWARD COUNTY DEPARTMENT OF PUBLIC WORKS - 992-2366
- TREES AND SHRUBS ARE TO BE PROTECTED FROM DAMAGE TO MAXIMUM EXTENT. TREES AND SHRUBS LOCATED WITHIN THE CONSTRUCTION STRIP ARE NOT TO BE REMOVED OR DAMAGED BY THE CONTRACTOR.
- CONTRACTOR SHALL REMOVE TREES, STUMPS AND ROOTS ALONG THE LINE OF EXCAVATION. PAYMENT FOR SUCH REMOVAL SHALL BE INCLUDED IN THE UNIT PRICE BID FOR CONSTRUCTION OF THE MAIN.
- ALL SEWER MAINS SHALL BE C.S.P.X., R.C.S.P., V.C.P.X., A.C.P. CLASS 2400 OR P.V.C. UNLESS OTHERWISE NOTED.
- THE CONTRACTOR SHALL PROVIDE A JOINT IN ALL SEWER MAINS WITHIN 2'-0" OF EXTERIOR MANHOLE WALL.
- ALL MANHOLES SHALL BE 4'-0" INSIDE DIAMETER UNLESS OTHERWISE NOTED.
- T.B. DENOTES TEST BORING.
- MANHOLES SHOWN WITH 12" AND 16" WALLS ARE FOR BRICK MANHOLES ONLY.
- MANHOLES DESIGNATED W.T. IN PLAN AND PROFILE SHALL HAVE WATERTIGHT FRAME AND COVERS, STANDARD DETAIL 6552. WHERE WATERTIGHT MANHOLE FRAME AND COVER IS USED, SET TOP OF FRAME 1'-6" ABOVE FINISHED GRADE UNLESS OTHERWISE NOTED ON THE DRAWINGS.
- HOUSES WITH THE SYMBOL "C.N.S." INDICATES THAT THE CELLAR CANNOT BE SERVED.

STABILIZATION NOTES:

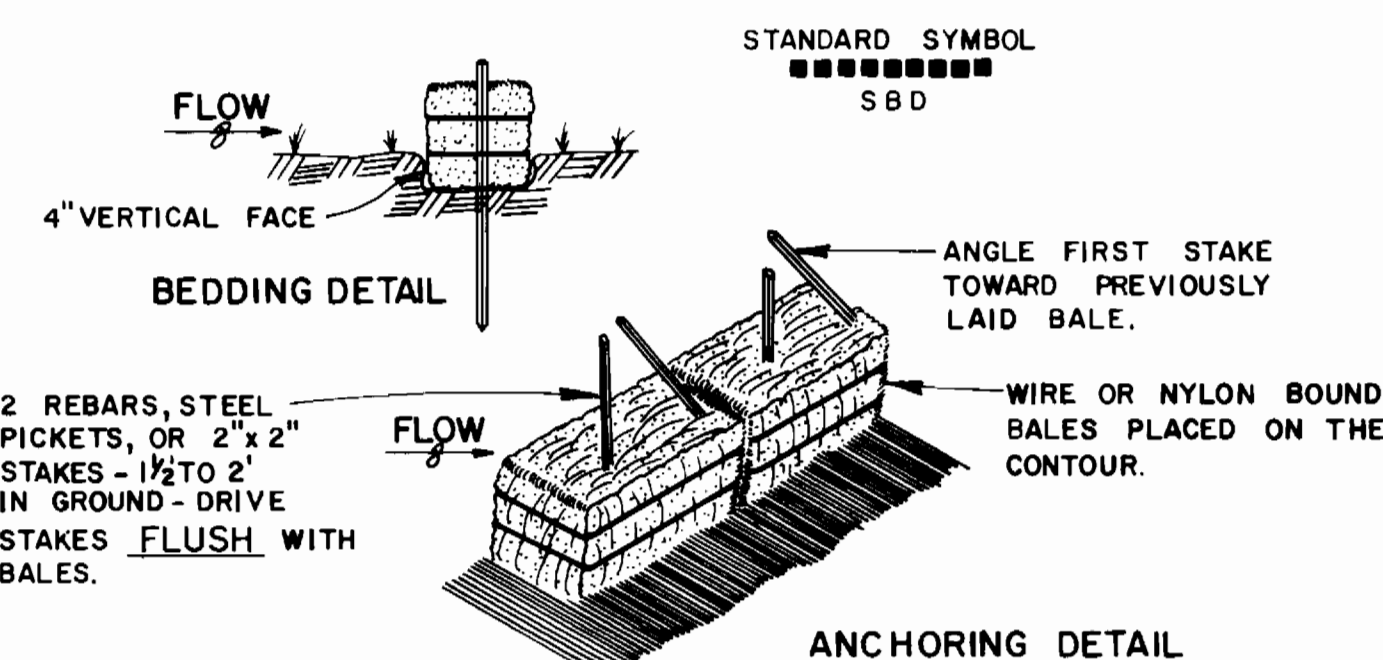
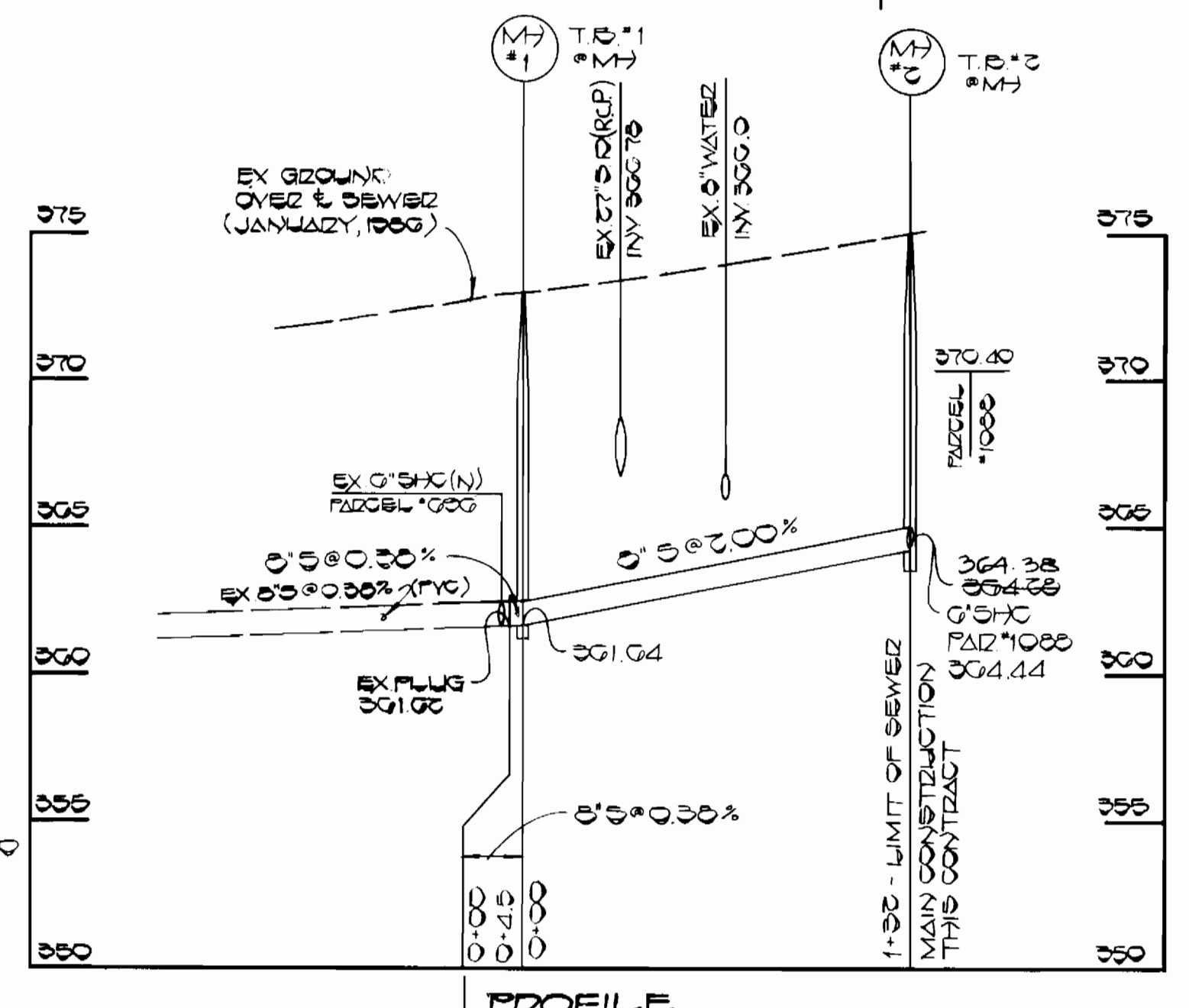
- FOLLOWING INITIAL SOIL DISTURBANCE OR REDISTURBANCE, PERMANENT OR TEMPORARY STABILIZATION SHALL BE COMPLETED WITHIN:
- 7 CALENDAR DAYS FOR ALL PERIMETER SEDIMENT CONTROL STRUCTURES, DIKES, SWALES, DITCHES, PERIMETER SLOPES AND ALL SLOPES GREATER THAN 3:1
 - 14 DAYS AS TO ALL OTHER DISTURBED OR GRADED AREAS ON THE PROJECT SITE.

TRAVERSE STATIONING TABLE

TRAVERSE POINT	STATION
P.I. 'N-4'	0+00.00
P.I. 'N-5'	4+19.17

MANHOLE STAKE-OUT TABLE

MANHOLE NO.	DISTANCE	OFFSET
1	10' FROM P.I. 'N-5' TOWARDS P.I. 'N-4'	2' RIGHT
2	140' FROM P.I. 'N-5' TOWARDS P.I. 'N-4'	4' LEFT



STRAW BALE DIKE

NO SCALE
CONSTRUCTION SPECIFICATIONS

- BALES SHALL BE PLACED AT THE TOE OF A SLOPE OR ON THE CONTOUR AND IN A ROW WITH ENDS TIGHTLY ABUTTING THE ADJACENT BALES.
- EACH BALE SHALL BE EMBEDDED IN THE SOIL A MINIMUM OF 4" INCHES AND PLACED SO THE BINDINGS ARE HORIZONTAL.
- BALES SHALL BE SECURELY ANCHORED IN PLACE BY EITHER TWO STAKES OR RE-BARS DRIVEN THROUGH THE BALE. THE FIRST STAKE IN EACH BALE SHALL BE DRIVEN TOWARD THE PREVIOUSLY LAID BALE AT AN ANGLE TO FORCE THE BALES TOGETHER. STAKES SHALL BE DRIVEN FLUSH WITH THE BALE.
- INSPECTION SHALL BE FREQUENT AND REPAIR REPLACEMENT SHALL BE MADE PROMPTLY AS NEEDED.
- BALES SHALL BE REMOVED WHEN THEY HAVE SERVED THEIR USEFULNESS SO AS NOT TO BLOCK OR IMPEDE STORM FLOW OR DRAINAGE.

QUANTITIES

ITEM	EST'D	AS BUILT	SUPPLIER
6" SEWER	137 LF	133 LF	A&P WATER & SEWER SUPPLIES (P.V.C.)
6" SEWER	35 LF	34 LF	A&P WATER & SEWER SUPPLIES (P.V.C.)
MANHOLES	2 EA	2 EA	ATLANTIC PRECAST CONCRETE CORP.

SEDIMENT CONTROL MEASURES FOR THIS CONTRACT WILL BE IMPLEMENTED IN ACCORDANCE WITH DIVISION III, VOLUME IV OF THE HOWARD COUNTY DESIGN MANUAL AND THE STANDARDS AND SPECIFICATIONS FOR SOIL EROSION AND SEDIMENT CONTROL.

Robert W. Fisher 4-2-86
U.S. SOIL CONSERVATION DISTRICT RATE

THIS DEVELOPMENT PLAN IS APPROVED FOR EROSION AND SEDIMENT CONTROL BY THE HOWARD SOIL CONSERVATION DISTRICT

APPROVED: *Robert W. Fisher* 4-2-86
HOWARD SOIL CONSERVATION DISTRICT RATE

DEPARTMENT OF PUBLIC WORKS HOWARD COUNTY, MARYLAND DIRECTOR OF PUBLIC WORKS: <i>Robert W. Fisher</i> 4-2-86 CHIEF, BUREAU OF UTILITIES: <i>Robert W. Fisher</i> 4/1/86	FISHER, COLLINS AND CARTER, INC. CONSULTING ENGINEERS AND LAND SURVEYORS 8388 COURT AVENUE ELLICOTT CITY, MARYLAND 21043 TERRELL A. FISHER DATE	DES: O.E.S. DRN: O.E.S. CHK: P.W.K. DATE: 2/14/86	PLAN & PROFILE SEWER MAIN	NORTHFIELD ROAD SEWER EXTENSION CAPITAL PROJECT S-6686 CONTRACT NO. 20-1452 SECOND ELECTION DISTRICT HOWARD COUNTY, MARYLAND	SCALE AS SHOWN SHEET 1 OF 1