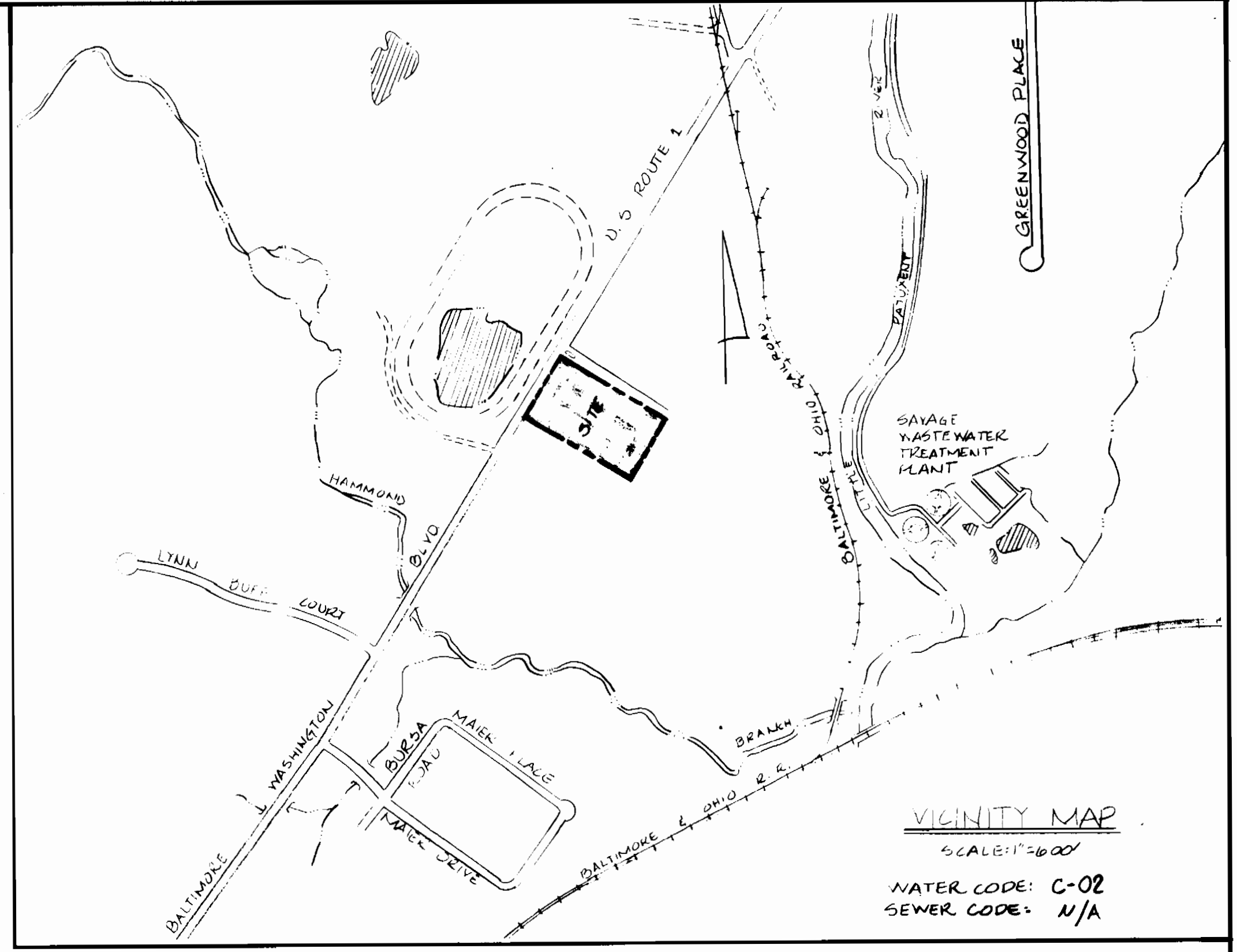
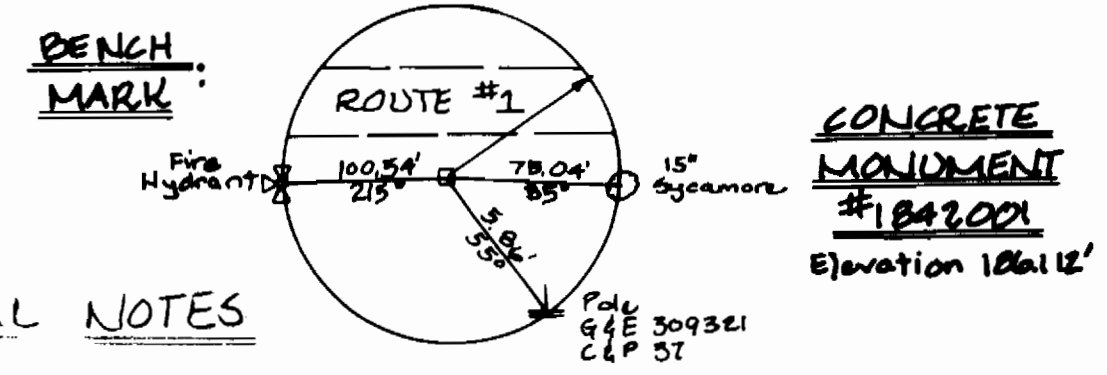


PLAN: SCALE 1"=50'

TYPE OF BUILDING: OFFICE/WAREHOUSE  
 NUMBER OF LOTS: 1  
 NUMBER OF WATER H.C.: 1  
 NUMBER OF SEWER H.C.: 1  
 DRAINAGE AREA: LITTLE PATUXENT



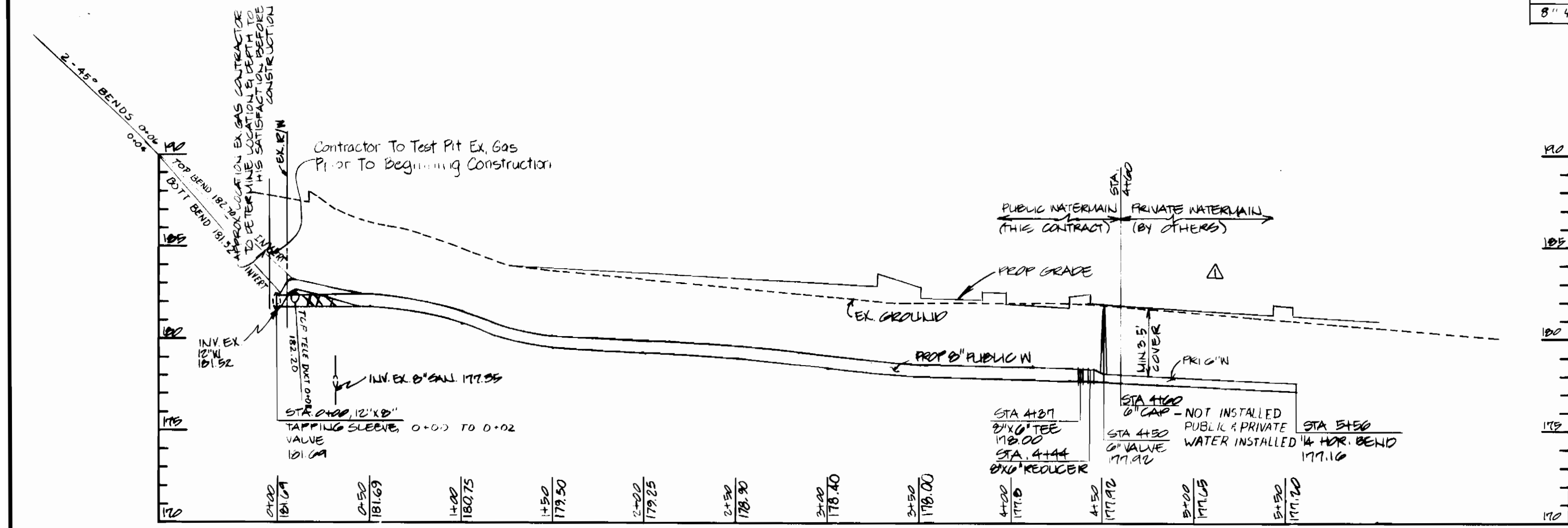
VICINITY MAP  
 SCALE 1"=500'  
 WATER CODE: C-02  
 SEWER CODE: N/A



GENERAL NOTES

- APPROXIMATE LOCATION OF EXISTING MAINS ARE SHOWN. THE CONTRACTOR SHALL TAKE ALL NECESSARY PRECAUTIONS TO PROTECT EXISTING MAINS AND SERVICES AND MAINTAIN UNINTERRUPTED SUPPLY. ANY DAMAGE INCURRED SHALL BE REPAIRED IMMEDIATELY TO THE SATISFACTION OF THE ENGINEER AT THE CONTRACTORS EXPENSE.
- ALL HORIZONTAL CONTROLS ARE BASED ON MARYLAND STATE COORDINATES.
- ALL PIPE ELEVATIONS SHOWN ARE INVERT ELEVATIONS.
- CLEAR ALL UTILITIES BY A MINIMUM 6". CLEAR ALL POLES BY 2'-0" MINIMUM OR TUNNEL AS REQUIRED. ANY COST INCURRED TO THE CONTRACTOR FOR TUNNELING OR BRACING AT POLES, SHALL BE INCLUDED IN THE UNIT PRICES BID FOR CONSTRUCTION OF THE MAIN.
- FOR DETAILS NOT SHOWN ON THE DRAWINGS, AND FOR MATERIALS AND CONSTRUCTION METHODS, USE HOWARD COUNTY DESIGN MANUAL, VOLUME IV, STANDARD SPECIFICATIONS AND DETAILS FOR CONSTRUCTION. THE CONTRACTOR SHALL HAVE A COPY OF VOLUME IV ON THE JOB.
- CONTRACTOR SHALL LOCATE EXISTING UTILITIES A MINIMUM OF TWO WEEKS IN ADVANCE OF CONSTRUCTION OPERATIONS IN THE VICINITY OF PROPOSED UTILITIES AT HIS OWN EXPENSE.
- CONTRACTOR SHALL NOTIFY THE FOLLOWING UTILITIES OR AGENCIES AT LEAST FIVE WORKING DAYS BEFORE STARTING WORK ON THESE PLANS: STATE HIGHWAY ADMINISTRATION-531-5533; BALTO. GAS & ELECTRIC CO.-CONTRACTOR SERVICES-561-2585; BALTO. GAS & ELECTRIC CO. UNDERGROUND DAMAGE CONTROL-234-5621; BALTO. GAS & ELECTRIC CO. TROUBLE SHOOTING-298-9033; MISS. UTILITY-1-539-0100; COLONIAL PIPELINE CO. 795-1390; BUREAU OF UTILITIES, HOWARD CO. DEPT. OF PUBLIC WORKS 492-2366.
- TREES AND SHRUBS ARE TO BE PROTECTED FROM DAMAGE TO MAXIMUM EXTENT. TREES AND SHRUBS LOCATED WITHIN THE CONSTRUCTION AREA NOT TO BE REMOVED OR DAMAGED BY THE CONTRACTOR.
- CONTRACTOR SHALL REMOVE TREES, STUMPS AND ROOTS ALONG LINE OF EXCAVATION. PAYMENT FOR SUCH REMOVAL SHALL BE INCLUDED IN THE UNIT PRICE BID FOR CONSTRUCTION OF THE MAIN.
- ALL WATER MAINS TO BE D.I.P. UNLESS OTHERWISE NOTED.
- TOPS OF ALL WATER MAINS TO HAVE A MINIMUM OF 3.5' COVER UNLESS OTHERWISE NOTED.
- VALVE ADJACENT TO TEES SHALL BE STRAPPED TO TEES.
- ALL FITTINGS SHALL BE BUTTRESSED OR ANCHORED WITH CONCRETE IN ACCORDANCE WITH THE STANDARD DETAIL UNLESS OTHERWISE PROVIDED ON THE DRAWINGS.
- FIRE HYDRANTS SHALL BE SET TO THE BURY LINE ELEVATIONS SHOWN ON THE DRAWINGS. ALL FIRE HYDRANTS TO BE SET 3" BEHIND PROPOSED FACE OF CURB UNLESS OTHERWISE NOTED. OTHERWISE, ALL FIRE HYDRANTS SHALL BE STRAPPED AND BUTTRESSED WITH CONCRETE IN ACCORDANCE WITH STANDARD DETAILS. SOIL AROUND THE FIRE HYDRANTS SHALL BE COMPACTED IN ACCORDANCE WITH SECTION 1003 OF THE STANDARD SPECIFICATIONS.
- THE CONTRACTOR SHALL NOT OPERATE ANY WATER MAIN VALVES ON THE EXISTING WATER SYSTEM.
- ALL WATER HOUSE CONNECTIONS INSIDE METER SETTING UNLESS OTHERWISE SHOWN.
- ALL WATER HOUSE CONNECTIONS SHALL COMPLY WITH HOWARD CO. STD. 321 AS SHOWN ON ARTICLE 40 SPECIAL PROVISIONS.
- MINIMUM CURB RADIUS WILL BE SPECIFIED BY PIPE MANUFACTURER.
- PLACE REGULATION "MEN WORKING" WARNING SIGNS AS REQUIRED TO COMPLY WITH MD. STATE HIGHWAY ADMINISTRATION MANUAL FOR HIGHWAY CONSTRUCTION AND MAINTENANCE OPERATIONS.

ITEM	ESTIMATED	AS-BUILT	MATERIAL / SUPPLIER
12" X 18" TAPPING SLEEVE, VALVE	1	1	M&H VALVE CO.
8" X 6" TEE	1	1	GRIFFIN PIPE CO.
6" VALVE	2	2	M&H VALVE CO.
6" F.H.	1	1	"
6" CAP	1	0	"
8" D.I.P.	444	444	GRIFFIN PIPE CO.
6" D.I.P.	26	26	"
8" X 6" REDUCER	1	1	"
8" 45° BENDS	0	2	"



WATER PROFILE #1 SCALE: HORIZ. 1"=50' VERT. 1"=5'

THE DEVELOPMENT PLAN IS APPROVED FOR SOIL EROSION AND SEDIMENT CONTROL BY THE HOWARD SOIL CONSERVATION DISTRICT. APPROVED: *[Signature]* DATE: 3/17/86  
 REVIEWED FOR HOWARD SOIL CONSERVATION DISTRICT AND MEETS TECHNICAL REQUIREMENTS: *[Signature]* DATE: 3/17/86  
 SEDIMENT CONTROL MEASURES FOR THIS CONTRACT WILL BE IMPLEMENTED IN ACCORDANCE WITH ARTICLE 15 OF THE STANDARD SPECIFICATION & S.D.P. 85-152

DEPARTMENT OF PUBLIC WORKS HOWARD COUNTY, MARYLAND <i>[Signature]</i> 3-12-86 DIRECTOR OF PUBLIC WORKS DATE <i>[Signature]</i> 3-11-86 CHIEF, BUREAU OF UTILITIES DATE <i>[Signature]</i> 3-11-86 CHIEF, LAND DEVELOPMENT DIV. DATE	ENGINEER GEORGE W. STEPHENS, JR. AND ASSOCIATES 303 ALLEGHENY AVENUE TOWSON, MARYLAND 21204 825-8120	DESIGNED: P.R.C. DRAWN: D.A.L. CHECKED: P.R.C. P.I. 05032	BY: <i>[Signature]</i> NO. 2510 REVISION: 1. BUILDING & PARKING - SHORTENED WATERMAIN ADDED BUTTRESS TO F.H.	DATE: 3-23-86 PLAN AND PROFILE FOR PROPOSED WATER MAIN CONTRACT NO. 44-1449-D 600' SCALE MAP NO. 47 BLOCK NO.	PROPOSED BUILDING ADDITION PROPERTY OF "THE SAVAGE GROUP" U.S. ROUTE #1 HOWARD CO., MARYLAND ELECT. DIST #6 SEPTEMBER 5, 1985	SCALE AS SHOWN SHEET NO. 10F1
--	---	--	--	--	---	----------------------------------