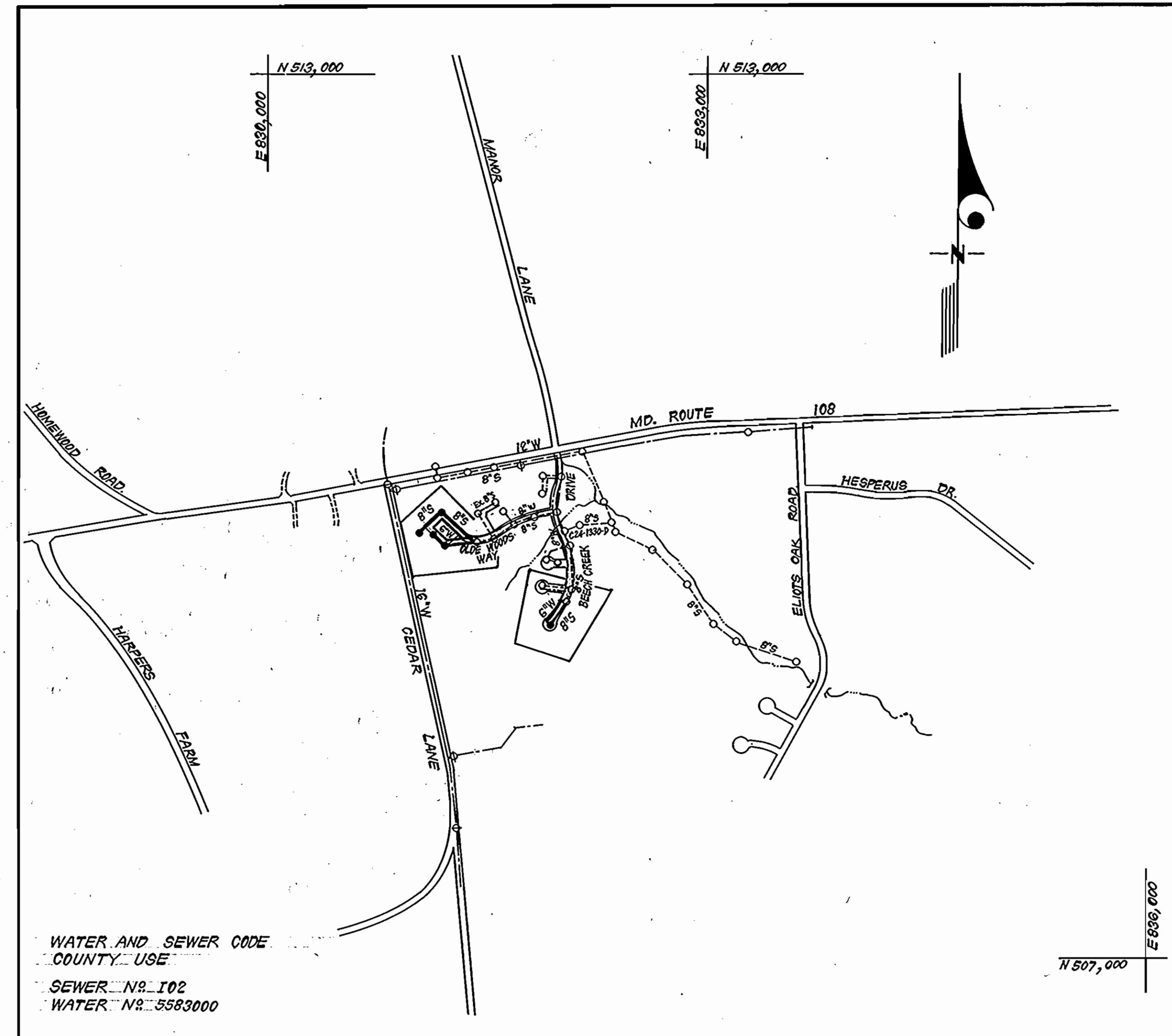


SEWER HOUSE CONNECTION TABLE					
LOTS	Inv. @ E.	Min. C.	LOTS	Inv. @ E.	Min. C.
109	447.2	450.8	134 / 135	439.7	443.0
110	449.2	452.8	136 / 137	440.6	443.6
111	450.6	454.0	138 / 139	441.5	444.5
113	456.7	460.3	140 / 141	441.9	445.0
114 / 115	457.2	462.6	142 / 143	442.8	445.7
116 / 117	457.2	462.6	144 / 145	443.1	446.1
118 / 119	457.6	461.2	146 / 147	441.8	444.8
120 / 121	451.6	457.0	148 / 149	439.8	442.8
122 / 123	449.6	455.0	150 / 151	440.3	443.3
124 / 125	432.2	436.2	152 / 153	439.1	442.1
126 / 127	432.5	435.5	154 / 155	438.2	441.2
128 / 129	434.2	437.7	156 / 157	436.8	439.8
130 / 131	435.9	439.1	158 / 159	435.8	438.8
132 / 133	438.3	441.5	112	453.3	456.7

TYPE OF BUILDING		Townhouses & Single Family
No. OF LOTS		51
No. OF WHC's		51
No. OF SHC's		51
DRAINAGE AREA		Little Patuxent



VICINITY MAP
SCALE 1" = 600'

GENERAL NOTES

- Approximate location of existing mains are shown. The contractor shall take all necessary precautions to protect existing mains and services and maintain uninterrupted supply. Any damage incurred shall be repaired immediately to the satisfaction of the Inspector, at the contractor's expense.
- All horizontal controls are based on Maryland State Coordinates.
- All vertical controls are based on U.S.G.S. Datum.
- All pipe elevations shown are invert elevations.
- Clear all utilities by a minimum of 6" clear all poles by 2'-0" minimum or tunnel as required. Any cost incurred to the contractor for tunneling or bracing at poles shall be included in unit prices bid for excavation and backfill.
- For details not shown on the drawings use Howard County Standard Details.
- For materials and construction methods use Howard County Standard Specifications, & Ho. Co. Design Manual Volume II. The contractor shall have a copy of Volume II on the job.
- Contractor shall locate existing utilities a minimum of two (2) weeks in advance of construction operations in the vicinity of proposed utilities at his own expense.
- Contractor shall notify the following utilities or agencies at least five (5) working days before starting work shown on these plans.
 State Highway Administration - 531-5533
 Baltimore Gas & Electric Company - Contractor Services - 561-2585
 Customer Service - 685-0123
 Baltimore Gas & Electric Company - Underground Damage Control - 234-5621
 Baltimore Gas & Electric Company - Trouble Shooting - 298-8013
 "Miss Utility" - 1-559-0100
 Chesapeake & Potomac (C & P) Telephone Company - 725-9976
 American Telephone and Telegraph - Cable Location Division - 393-3553
 Colonial Pipeline Company - 795-1380
 Bureau of Utilities Howard County - 992-2366
- Trees are to be protected from damage to maximum extent. Trees located within the construction strip are not to be removed or damaged by the contractor.
- Contractor shall remove trees, stumps, and roots along line of excavation as directed by the Inspector. Payment for such removal shall be included in the unit price bid for excavation and backfill.
- Place regulation "Men Working" and warning signs as required to comply with Maryland State Highway Administration Manual of Traffic Control for Highway Construction and Maintenance Operations.
- All water mains to be C.I.P. or D.I.P. unless otherwise noted.
- Top of all water mains to have a minimum of 3-1/2' cover unless otherwise noted.
- Valves adjacent to tees shall be strapped to tees.
- Block all fittings with concrete.
- Bury line elevations on fire hydrants shall be set to the elevations shown on the drawings. All fire hydrants shall be strapped and buttressed with concrete in accordance with standard details. Soil around the fire hydrant to be compacted in accordance with Sections 1003 & 1008 of the Standard Specifications.
- All water house connections shall be for an inside meter setting.
- The contractor shall not operate any water main valves on the existing system.
- All sewer mains shall be C.S.P.X., V.C.P.X., P.V.C., or A.C.P. Class 2400 unless otherwise noted.
- The contractor shall provide a joint in all sewer mains within 2'-0" of exterior manhole wall.
- All manholes shall be 4'-0" inside diameter, unless otherwise noted.
- Water main and water house connection lines must have a minimum of one foot separation from the sanitary sewer and sewer house connections as they cross. Except at crossings, water and sewer lines shall have a minimum horizontal separation of 10'.
- For all Copper Water House Connections, utilize flared type fittings only.

CONTRACT NO. 24-1448D W&S
BEECH CREEK
SECTION 1 AREA 3
HOWARD COUNTY, MARYLAND
DEPARTMENT OF PUBLIC WORKS

QUANTITIES			
ITEM	EST. QTY.	AS-BUILT	MATERIAL / SUPPLIER
6" WATER	721 L.F.	721	CLASS 52 - GRIFFIN PIPE PRODUCTS
8" WATER	200 L.F.	200	" " " "
8" SEWER	918 L.F.	898	SDR 35 P.V.C. J-M MANUF.
6" SHC	880 L.F.	815	" " " "
2" WHC	100 L.F.	100	TYPE "K" COPPER - HOWEL METALS
1" WHC	375 L.F.	370	" " " "
3/4" WHC	825 L.F.	833	" " " "
F.H.	2 EA.	2	METROPOLITAN F.H. - U.S. PIPE & FOUNDRY
4'-0" DIA. MH	5 EA.	5	SAN. MH. - ATLANTIC PRECAST CON. CORP.

Sediment Control Measures will be implemented in accordance with Article No. 15 of the Specifications & with Road Construction Plan F 86-90; Drawing Sediment & Erosion Control.

REVIEWED FOR HOWARD SOIL CONSERVATION DISTRICT AND MEETS TECHNICAL REQUIREMENT.
 J. Helms 2-11-86
 SIGNATURE DATE

U.S. SOIL CONSERVATION SERVICE
 This Development Plan is approved for Soil Erosion and Sediment Control by the Howard Soil Conservation District.

APPROVED:
 Stephen L. Helms 2/11/86
 HOWARD S.C.D. DATE

SECTION 1 AREA 3
 BEECH CREEK
 LOTS 109 THRU 163

DEPARTMENT OF PUBLIC WORKS
 HOWARD COUNTY, MARYLAND

David F. Norman 3-27-86
 DIRECTOR OF PUBLIC WORKS DATE

Phillip E. Brown 3-27-86
 CHIEF, BUREAU OF ENGINEERING DATE

Phillip E. Brown 3-27-86
 CHIEF, LAND DEVELOPMENT DIV. DATE

CFE CLARK • FINEFROCK & SACKETT
 ENGINEERS • PLANNERS • SURVEYORS

11315 LOCKWOOD DRIVE SILVER SPRING, MARYLAND 20904
 (301) 593-3400



DES:			
DRN:			
CHK:			
DATE:			
BY:	NO.	REVISION	DATE

TITLE SHEET

600' SCALE MAP NO. 20 BLOCK NO.

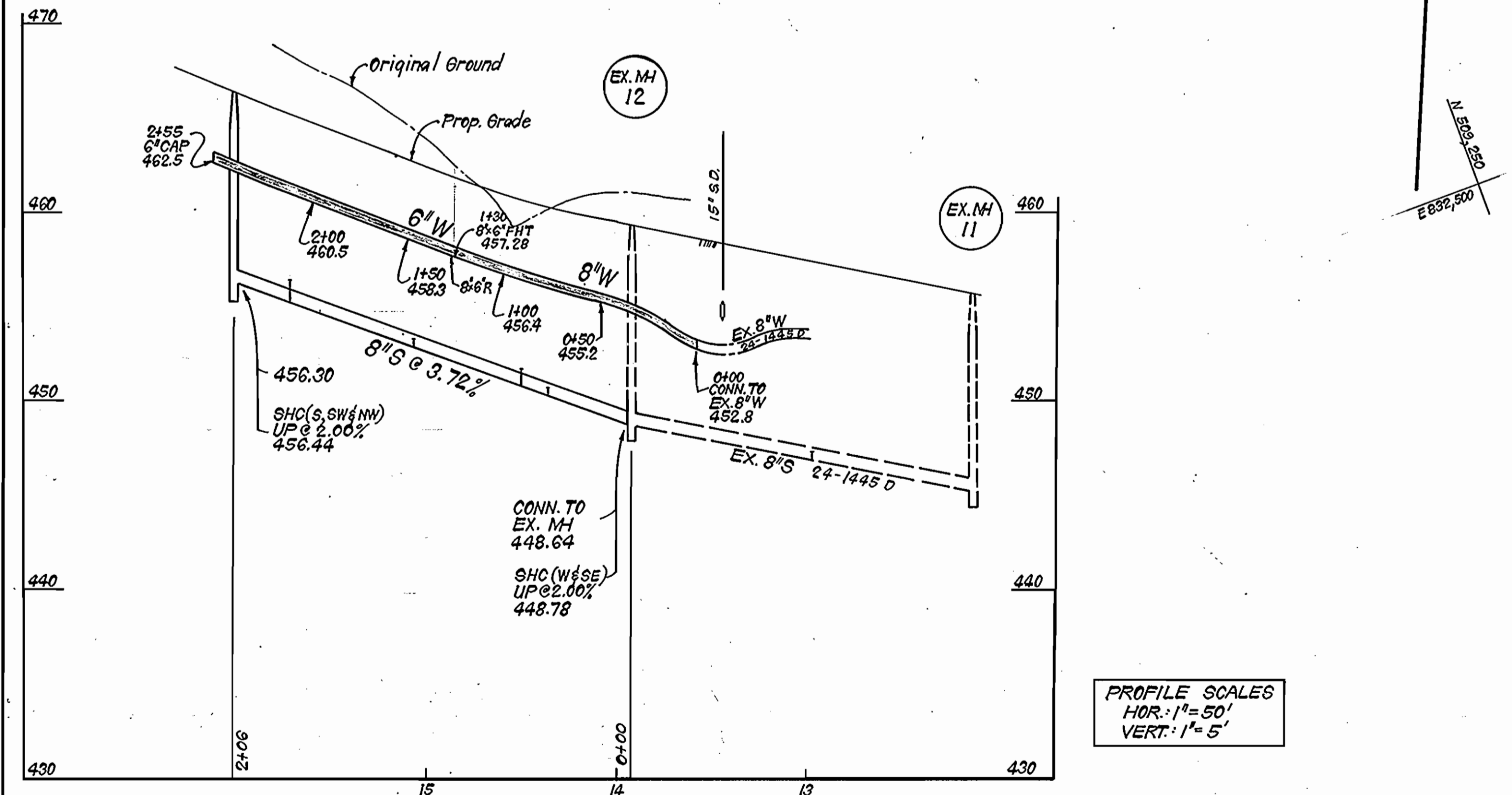
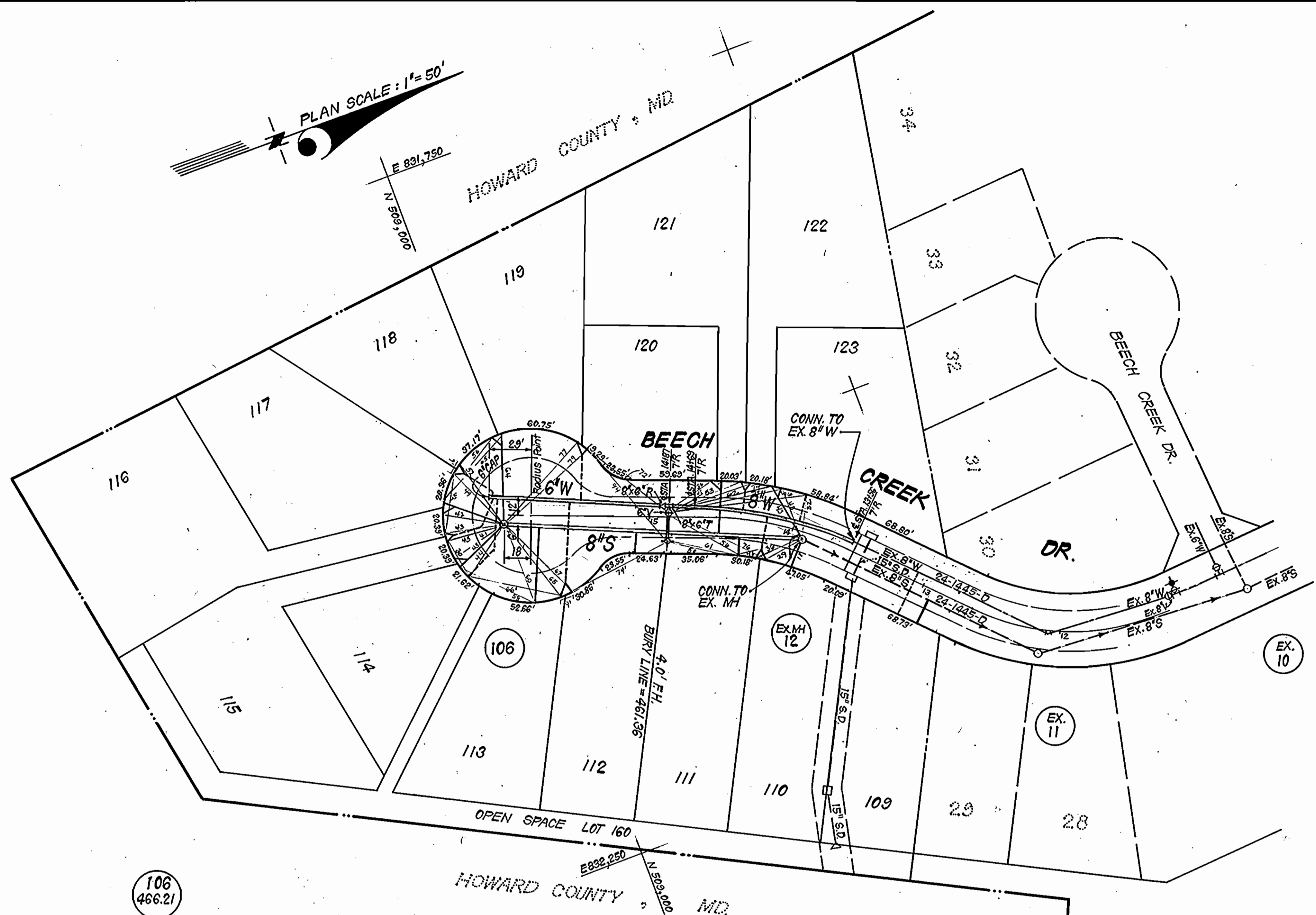
BEECH CREEK
 SECTION 1 AREA 3

5TH ELECTION DISTRICT
 CONTRACT NO. 24-1448 D

SCALE
 AS SHOWN

SHEET
 1 OF 3

PLAN SCALE: 1" = 50'



PROFILE SCALES
HOR.: 1" = 50'
VERT.: 1" = 5'

DEPARTMENT OF PUBLIC WORKS
HOWARD COUNTY, MARYLAND

Robert M. Bennett 3-25-86
DIRECTOR OF PUBLIC WORKS DATE

William H. ... 3-27-86
CHIEF, BUREAU OF ENGINEERING DATE

... 3-27-86
CHIEF, LAND DEVELOPMENT DIV. DATE

CF&S CLARK - FINEROCK & SACKETT
ENGINEERS - PLANNERS - SURVEYORS

11315 LOCKWOOD DRIVE SILVER SPRING, MARYLAND 20904
(301) 593-3400



DES:			
DRN:			
CHK:			
DATE:			
BY:	NO.	REVISION	DATE

PLAN & PROFILES OF
WATER & SEWER MAINS

600' SCALE MAP NO. 29 BLOCK NO.

BEECH CREEK
SECTION I AREA 3

5TH ELECTION DISTRICT
CONTRACT NO. 24-1448 D

SCALE
AS SHOWN

SHEET
3 OF 3