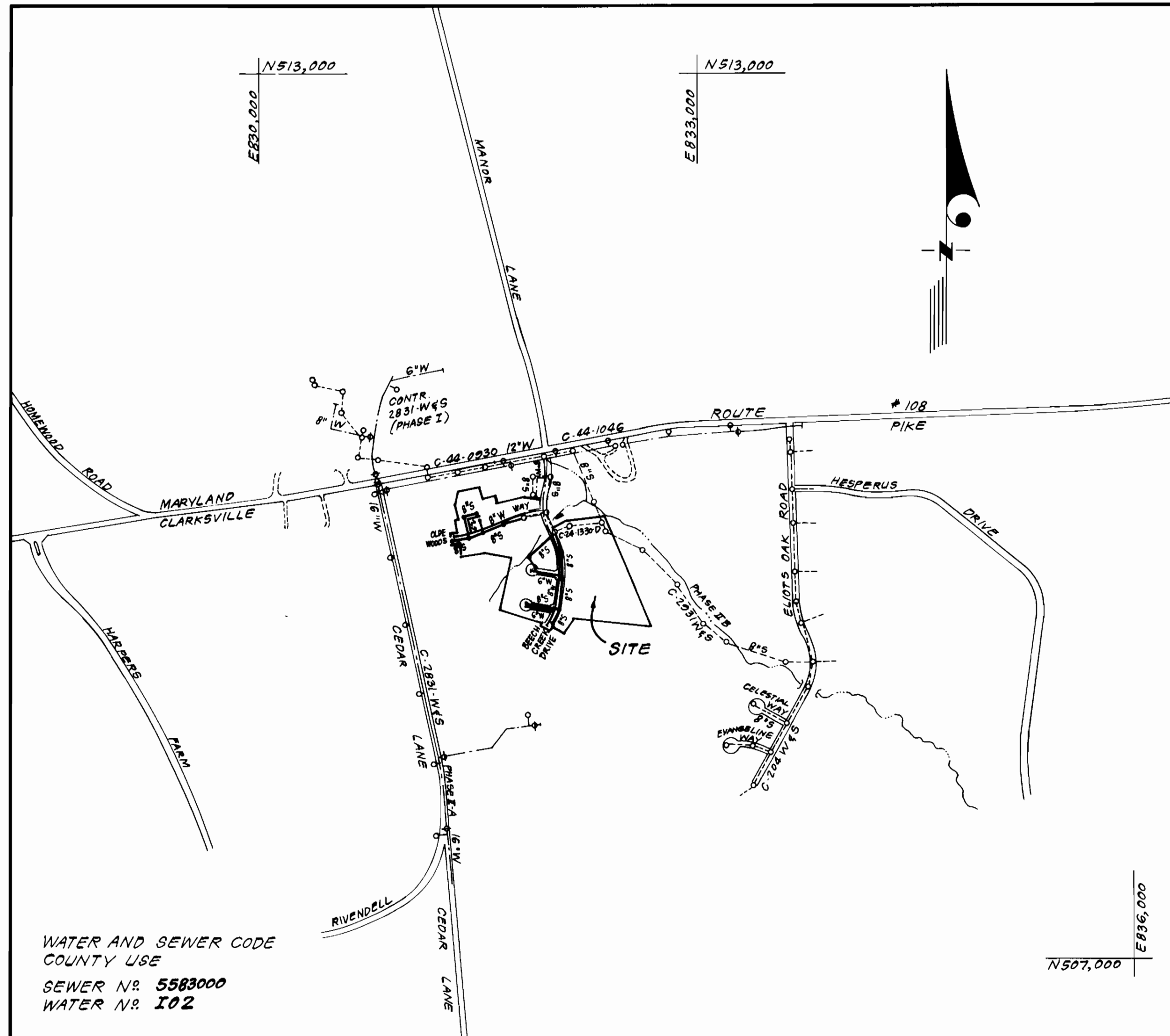


SEWER HOUSE CONNECTION TABLE					
LOTS	Inv. @ E	Min. C.	LOTS	Inv. @ E	Min. C.
18 / 19	424.6	428.5	59 / 60	431.8	435.1
20 / 21	428.3	431.8	61 / 62	432.2	435.5
22 / 23	435.8	439.6	63 / 64	432.7	436.0
24 / 25	440.1	443.9	65 / 66	433.1	436.4
26 / 27	443.8	447.4	67 / 68	433.7	436.9
28 / 29	445.3	449.1	69 / 70	434.1	437.4
30 / 31	445.1	449.1	71 / 72	433.7	436.7
32 / 33	446.4	450.3	73 / 74	435.0	438.0
34 / 35	446.2	451.4	75 / 76	437.5	440.5
36 / 37	446.3	450.1	77 / 78	436.9	439.9
38 / 39	443.9	447.7	79 / 80	437.4	440.4
41 / 42	429.1	433.1	81 / 82	437.7	440.7
43 / 44	428.1	433.1	83 / 84	438.3	441.3
45	428.7	432.2	85 / 86	438.1	441.1
46	431.2	434.9	87 / 88	435.9	438.9
47 / 48	423.1	426.4	89 / 90	434.0	437.0
49 / 50	425.5	428.8	91 / 92	430.6	433.9
51 / 52	428.7	432.0	93 / 94	430.2	433.5
53 / 54	429.9	433.2	95 / 96	429.7	433.0
55 / 56	430.5	433.8	97 / 98	427.1	430.4
57 / 58	430.9	434.2	40	435.8	439.0

TYPE OF BUILDING	Townhouses & Single Family
NO. OF LOTS	81
NO. OF WHC'S	81
NO. OF BHC'S	81
DRAINAGE AREA	Little Patuxent



WATER AND SEWER CODE COUNTY USE
SEWER NR. 5583000
WATER NR. 102

VICINITY MAP
SCALE: 1" = 600'

GENERAL NOTES

- Approximate location of existing mains are shown. The contractor shall take all necessary precautions to protect existing mains and services and maintain uninterrupted supply. Any damage incurred shall be repaired immediately to the satisfaction of the inspector, at the contractor's expense.
- All horizontal controls are based on Maryland State Coordinates.
- All vertical controls are based on U.S.G.S. Datum.
- All pipe elevations shown are invert elevations.
- Clear all utilities by a minimum of 6" clear all poles by 2'-0" minimum or tunnel as required. Any cost incurred to the contractor for tunneling or bracing at poles shall be included in unit prices bid for excavation and backfill.
- For details not shown on the drawings use Howard County Standard Details.
- For materials and construction methods use Howard County Standard Specifications of Ho. Co. Design Manual, Volume II. The contractor shall have a copy of Volume II on the job.
- Contractor shall locate existing utilities a minimum of two (2) weeks in advance of construction operations in the vicinity of proposed utilities at his own expense.
- Contractor shall notify the following utilities or agencies at least five (5) working days before starting work shown on these plans.
State Highway Administration - 531-5533
Baltimore Gas & Electric Company - Contractor Services - 561-2585
Baltimore Gas & Electric Company - Underground Damage Control - 234-5621
Baltimore Gas & Electric Company - Trouble Shooting - 298-9013
"Miss Utility" - 1-559-0100
Chesapeake & Potomac (C & P) Telephone Company - 725-9976
Division - 393-3553
Colonial Pipeline Company - 795-1390
Bureau of Utilities Howard County - 992-2366
- Trees are to be protected from damage to maximum extent. Trees located within the construction strip are not to be removed or damaged by the contractor.
- Contractor shall remove trees, stumps, and roots along line of excavation as directed by the inspector. Payment for such removal shall be included in the unit price bid for excavation and backfill.
- Place regulation "Men Working" and warning signs as required to comply with Maryland State Highway Administration Manual of Traffic Control for Highway Construction and Maintenance Operations.
- All water mains to be D.I.P. unless otherwise noted.
- Top of all water mains to have a minimum of 3-1/2' cover unless otherwise noted.
- Valves adjacent to tees shall be strapped to tees.
- Block all fittings with concrete.
- Bury line elevations on fire hydrants shall be set to the elevations shown on the drawings. All fire hydrants shall be strapped and buttressed with concrete in accordance with standard details. Soil around the fire hydrant to be compacted in accordance with Sections 1003 & 1008 of the Standard Specifications.
- All water house connections shall be for an inside meter setting.
- The contractor shall not operate any water main valves on the existing system.
- All sewer mains shall be C.S.P.X., V.C.P.X., P.V.C., or A.C.P. Class 2400 unless otherwise noted.
- The contractor shall provide a joint in all sewer mains within 2'-0" of exterior manhole wall.
- All manholes shall be 4'-0" inside diameter, unless otherwise noted.
- Water main and water house connection lines must have a minimum of one foot separation from the sanitary sewer and sewer house connections as they cross. Except at crossings, water and sewer lines shall have a minimum horizontal separation of 10'.
- For all Copper Water House Connections, utilize flared type fittings only.

CONTRACT NO. 24-1445-D W&S
BEECH CREEK
SECTION 1 AREA 2
HOWARD COUNTY, MARYLAND
DEPARTMENT OF PUBLIC WORKS

QUANTITIES			
ITEM	EST. MD.	AS-BUILT	MATERIAL/SUPPLIER
6" WATER	662 L.F.	152	
8" WATER	1456 L.F.	1408	
8" SEWER	2258 L.F.	2388.4	
6" SHC	1185 L.F.	2403.8	
2" WHC	45 L.F.	18	
1" WHC	825 L.F.	939	
3/4" WHC	1035 L.F.	1149	
F.H.	4 EA.	4	
4'-0" DIA. MH	16 EA.	16	
8" V.	2 EA.	2	
6" V. (excl. FH)	3 EA.	3	
8" DC TYPE 'A'	1 EA.	1	
1/2" DRAIN	1 EA.	1	

Sediment Control Measures will be implemented in accordance with Article No. 15 of the Specifications & with Road Construction Plan F.86-89; Drawing, Sediment & Erosion Control.

REVIEWED FOR HOWARD SOIL CONSERVATION DISTRICT AND MEETS TECHNICAL REQUIREMENT
James M. Hill 1-29-86
SIGNATURE DATE

U.S. SOIL CONSERVATION SERVICE
This Development Plan is approved for Soil Erosion and Sediment Control by the Howard Soil Conservation District.

APPROVED:
Stephen L. Hahn 1/27/86
Howard S.C.D. DATE

SECTION 1 AREA 2
BEECH CREEK
LOTS 18 THRU 108

DEPARTMENT OF PUBLIC WORKS
HOWARD COUNTY, MARYLAND

John C. ... 2-4-86
DIRECTOR OF PUBLIC WORKS DATE

William ... 2-4-86
CHIEF, BUREAU OF ENGINEERING DATE

Ruth ... 1-31-86
CHIEF, BUREAU OF UTILITIES DATE

William ... 2-4-86
CHIEF, LAND DEVELOPMENT DIV. DATE

CFS CLARK · FINEPROCK & SACKETT
ENGINEERS · PLANNERS · SURVEYORS
11315 LOCKWOOD DRIVE SILVER SPRING, MARYLAND 20904
(301) 593-3400

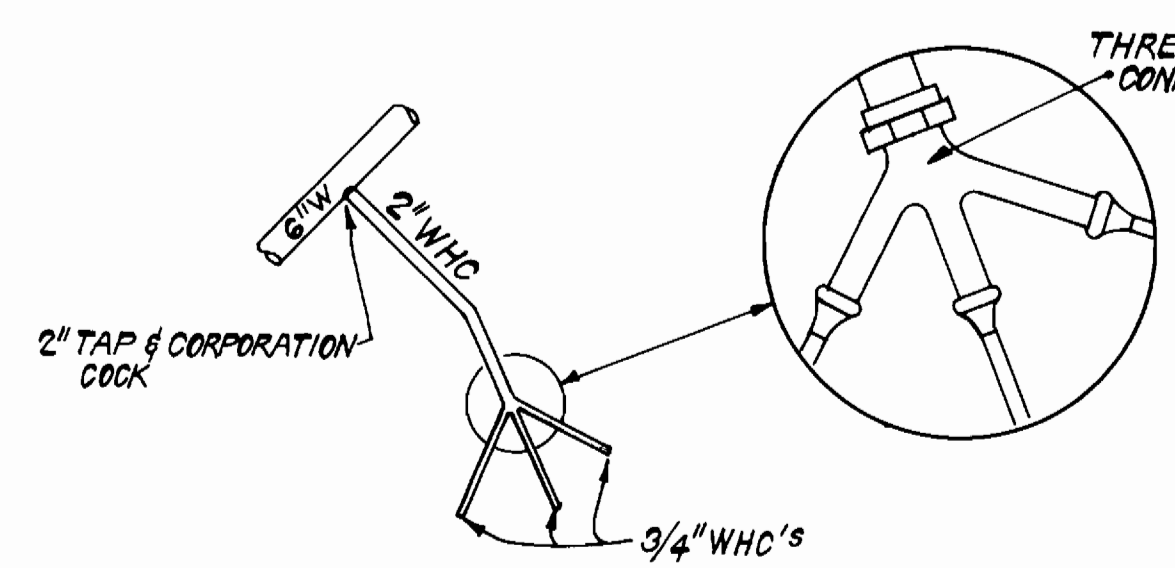


DES: C.C.M.	YLM 1	Added property boundary to vicinity map.	2-4-86
	YLM 2	Revised SHC Table	4-14-86
DRN: V.L.B.			
CHK: C.C.M.			
DATE: 4-85			

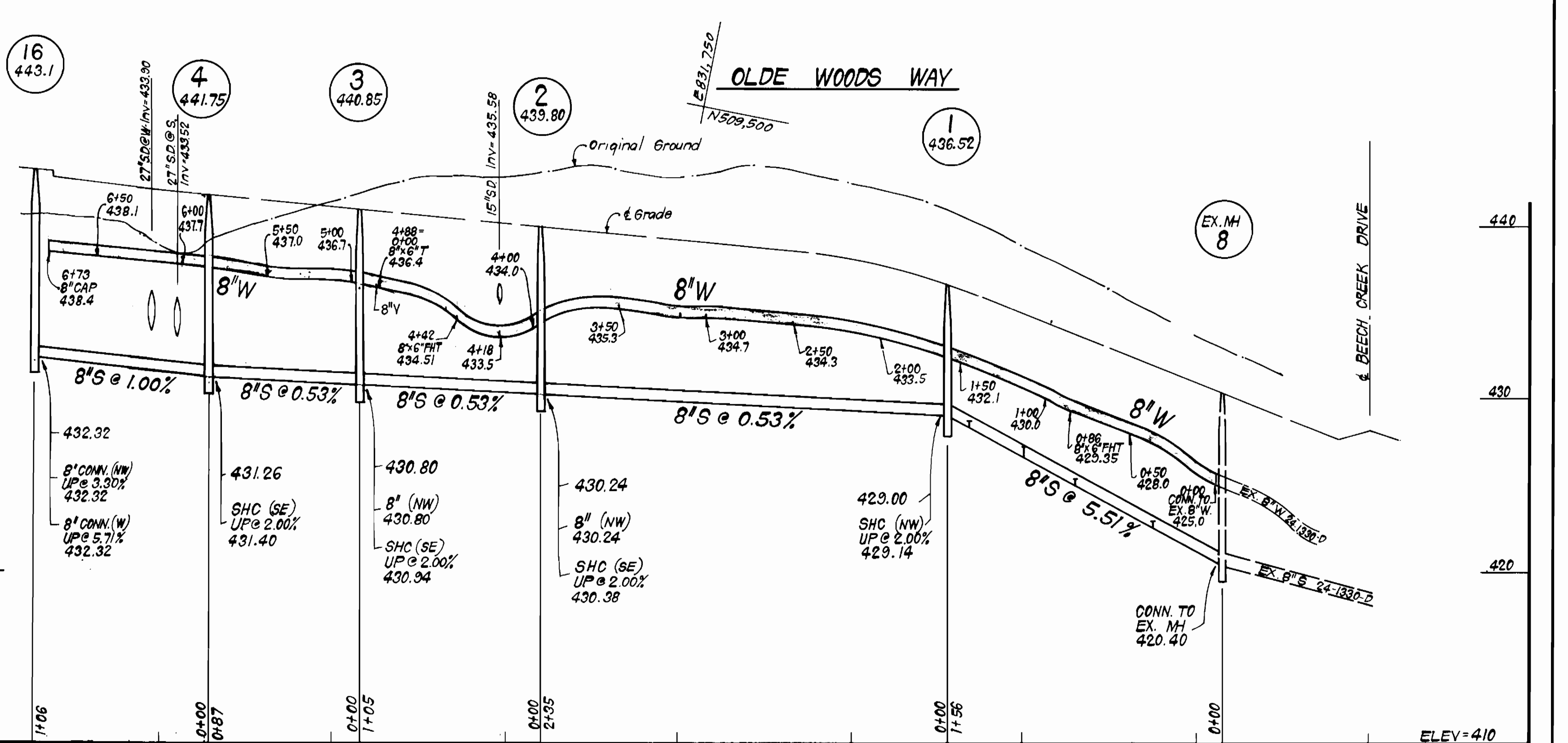
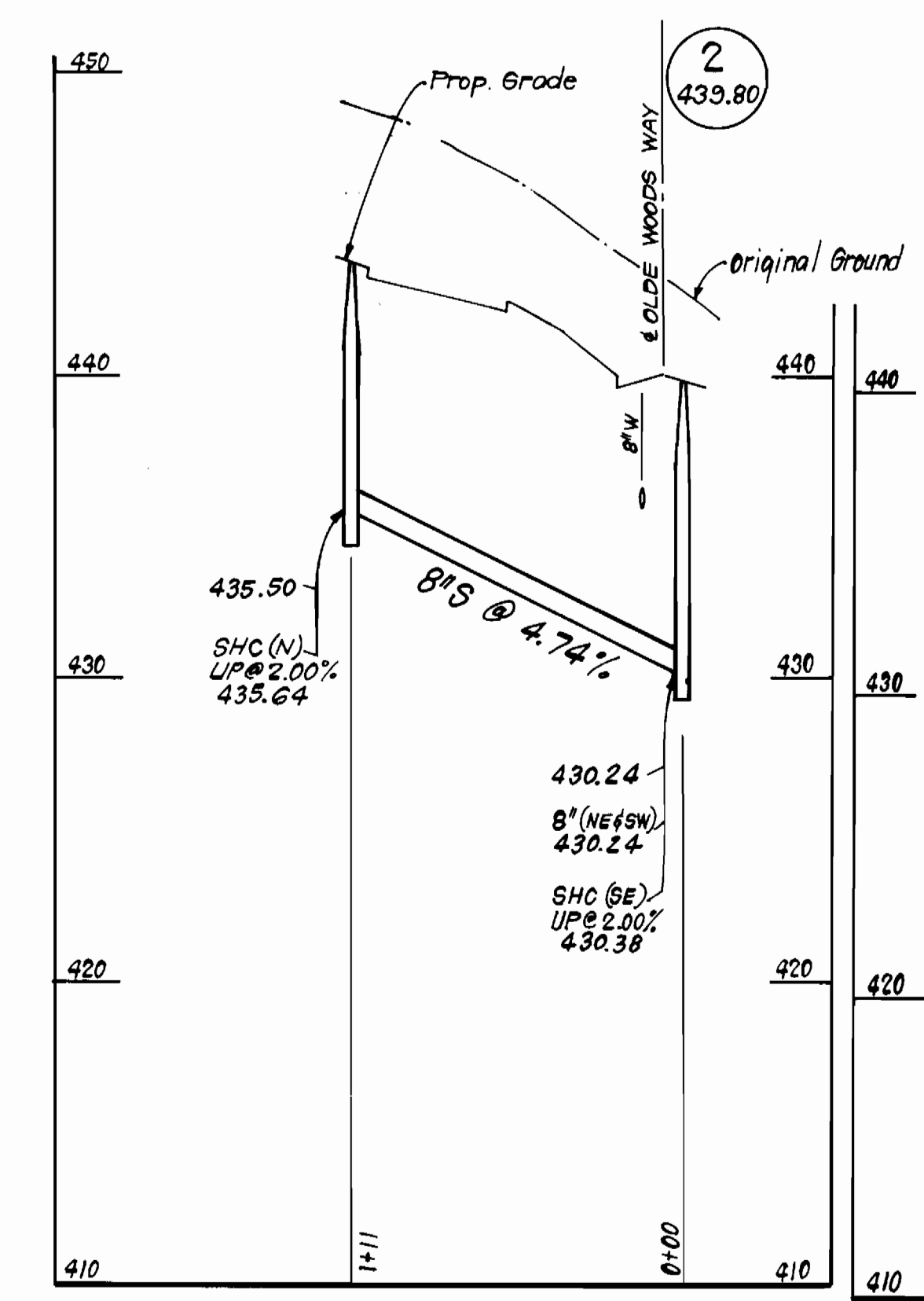
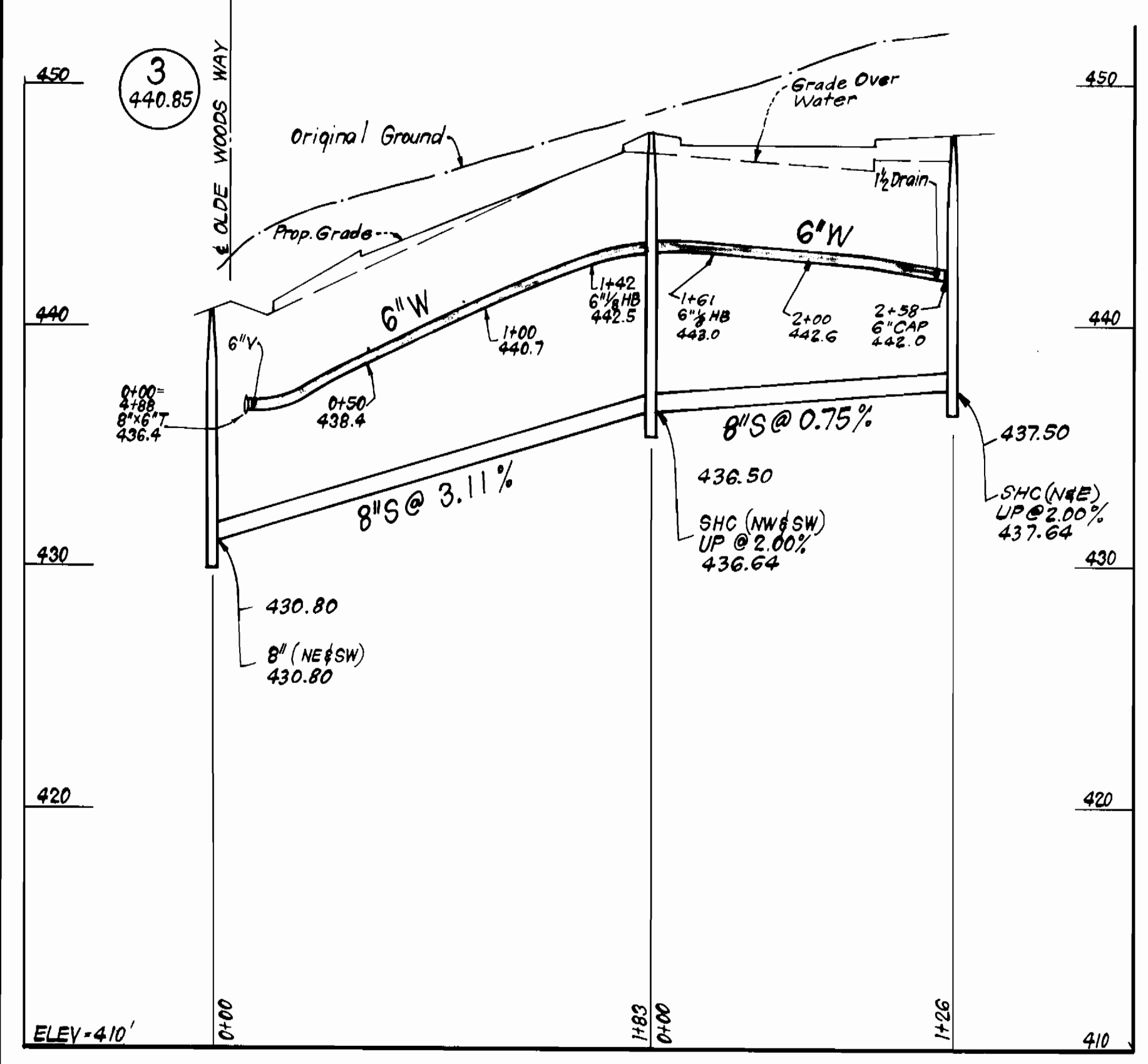
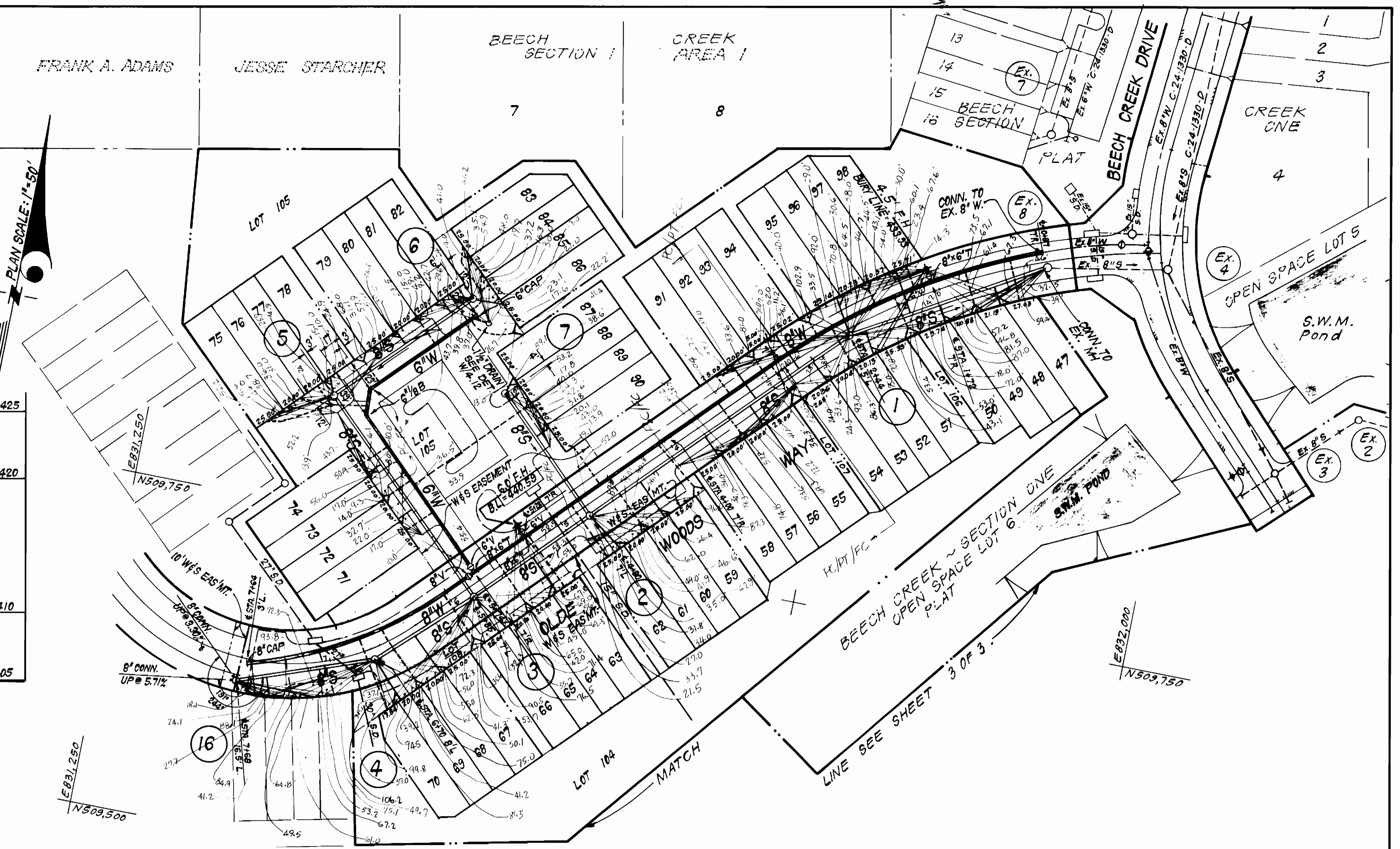
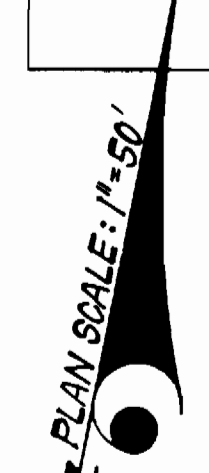
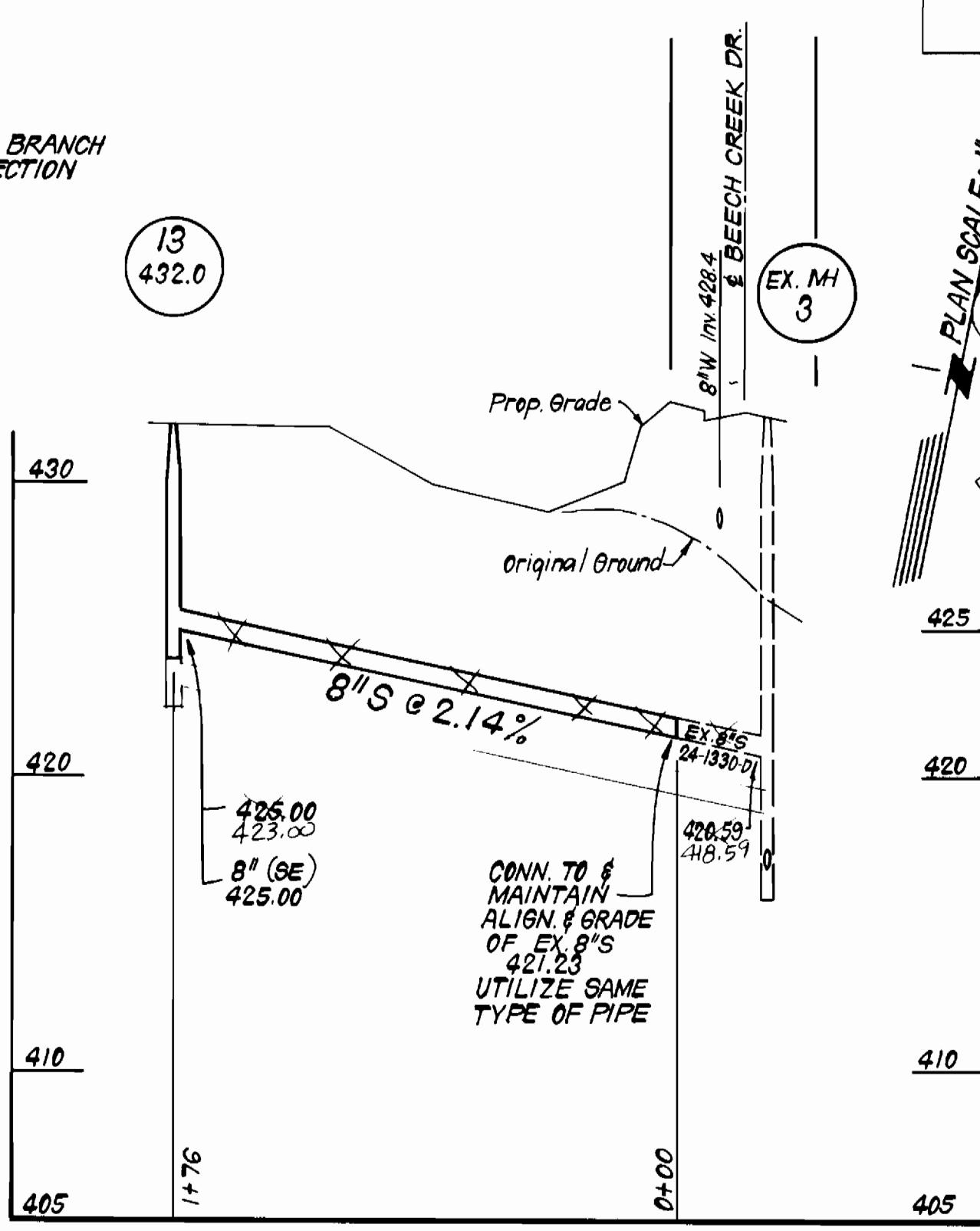
TITLE SHEET
600' SCALE MAP NO. 22 BLOCK NO.

BEECH CREEK
SECTION 1 AREA 2
5TH ELECTION DISTRICT
CONTRACT NO. 24-1445 D

SCALE AS SHOWN
SHEET 1 OF 3



3-WAY W.M.C. DETAIL
 LOTS 75, 76 & 77 LOTS 83, 84 & 85
 LOTS 75/76 DOUBLE
 LOT 77 SINGLE



DEPARTMENT OF PUBLIC WORKS
 HOWARD COUNTY, MARYLAND

Director of Public Works: *John A. ...* DATE: 2-4-86
 Chief, Bureau of Engineering: *...* DATE: ...
 Chief, Bureau of Utilities: *...* DATE: 1-31-86
 Chief, Land Development Div.: *...* DATE: ...

CFE CLARK · FINEPROCK & SACKETT
 ENGINEERS · PLANNERS · SURVEYORS
 11315 LOCKWOOD DRIVE SILVER SPRING, MARYLAND 20904
 (301) 593-3400

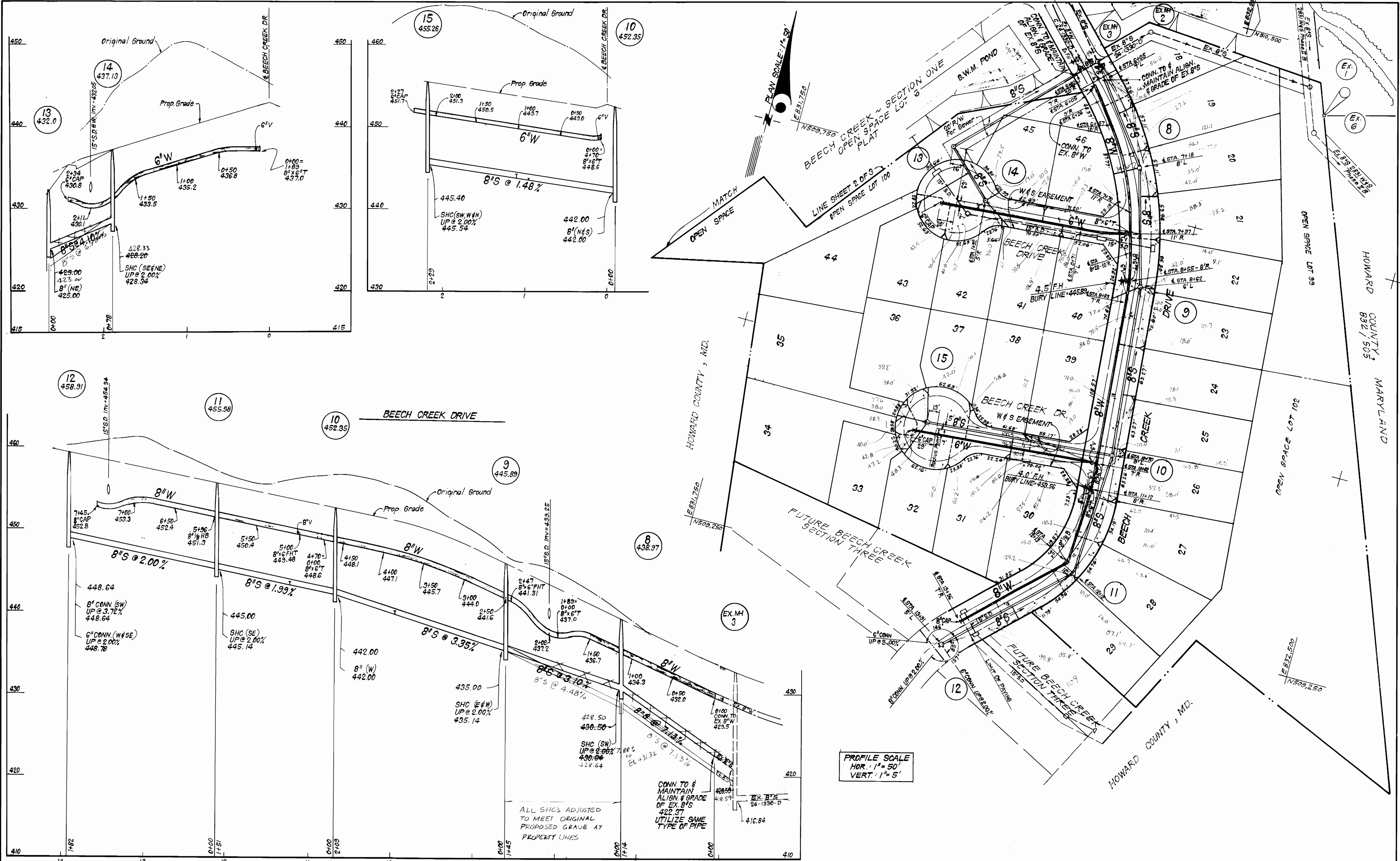


DES: C.C.M.	VLM 1	Revised Title Box due to drafting error.	7.4.86
DRN: V.L.B.	VLM 2	Revised Profiles	4.14.86
CHK: C.C.M.			
DATE: 4-85	BY: NO.	REVISION	DATE

PLAN & PROFILES OF
 WATER & SEWER MAINS

BEECH CREEK SECTION I AREA 2
 5TH ELECTION DISTRICT
 CONTRACT NO. 24-1445 D

SCALE AS SHOWN
 SHEET 2 OF 3



DEPARTMENT OF PUBLIC WORKS
 HOWARD COUNTY, MARYLAND

James N. ...
 DIRECTOR OF PUBLIC WORKS DATE 2-4-86

...
 CHIEF, BUREAU OF ENGINEERING DATE

...
 CHIEF, LAND DEVELOPMENT DIV. DATE

CFE CLARK · FINEPROCK & SACKETT
 ENGINEERS · PLANNERS · SURVEYORS

11315 LOCKWOOD DRIVE SILVER SPRING, MARYLAND 20904
 (301) 593-3400

...
 1-23-86

DES: C.C.M.	VLM 1	Revised Title Box due to drafting error	2-4-86
DRN: V.L.B.	VLM 2	Revised Profiles	4-14-86
CHK: C.C.M.			
DATE: 4/85	BY NO.	REVISION	DATE

PLAN & PROFILES OF
 WATER & SEWER MAINS

600' SCALE MAP NO. 22 BLOCK NO.

BEECH CREEK
 SECTION 1 AREA 2

5TH ELECTION DISTRICT
 CONTRACT NO. 24-1445 D

SCALE
 AS SHOWN

SHEET
 3 OF 3