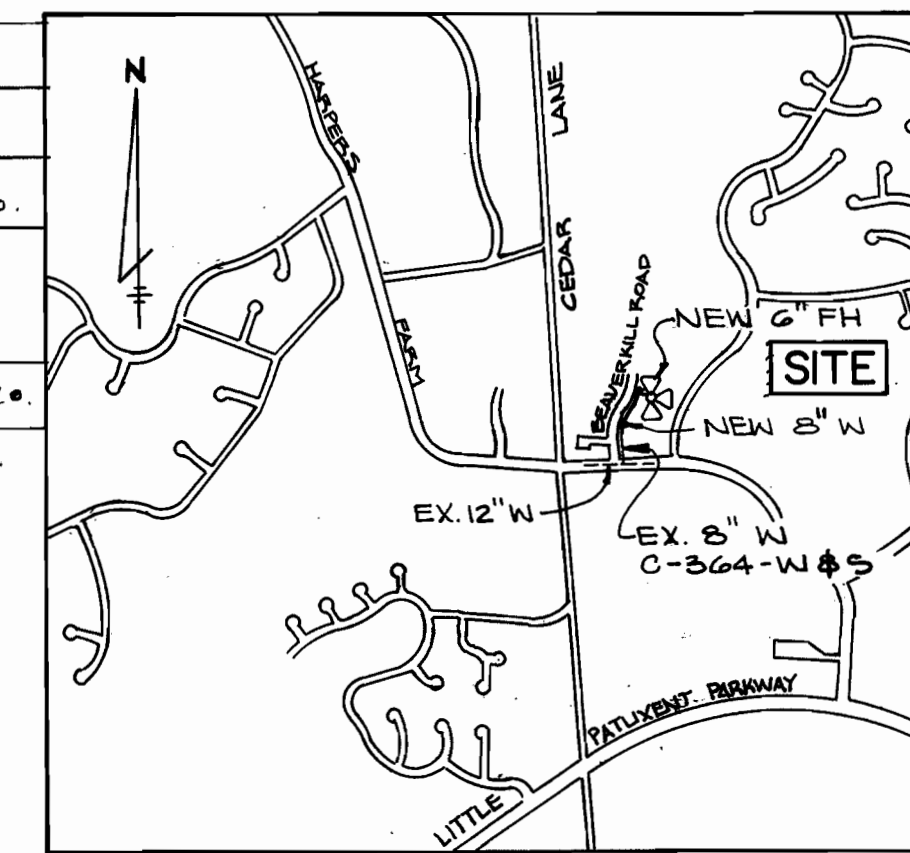


QUANTITIES				MATERIAL SUPPLIER
NO.	ITEMS	PROP.	AS BUILT	AS-BUILT
1	6" WATER	6 LF	2.5 L.F.	US PIPE & Foundry Co.
2	8" WATER	344 LF	N/A	
3	6" F.H. VALVE WITH VALVE BOX	1 EA.	N/A	
4	6" F.H.	1 EA.	1 EA.	US PIPE & Foundry Co.
5	1/16 BEND (8")	2 EA.	N/A	
6	8" X 6" X 6" TEE	1 EA.	N/A	



NO OF WHC - NA.  
 NO OF SHC - NA.  
 DA, LITTLE PATUXENT  
 SEWER CODE - NA.  
 WATER CODE - I-02

VICINITY MAP  
 SCALE: 1" = 1400'

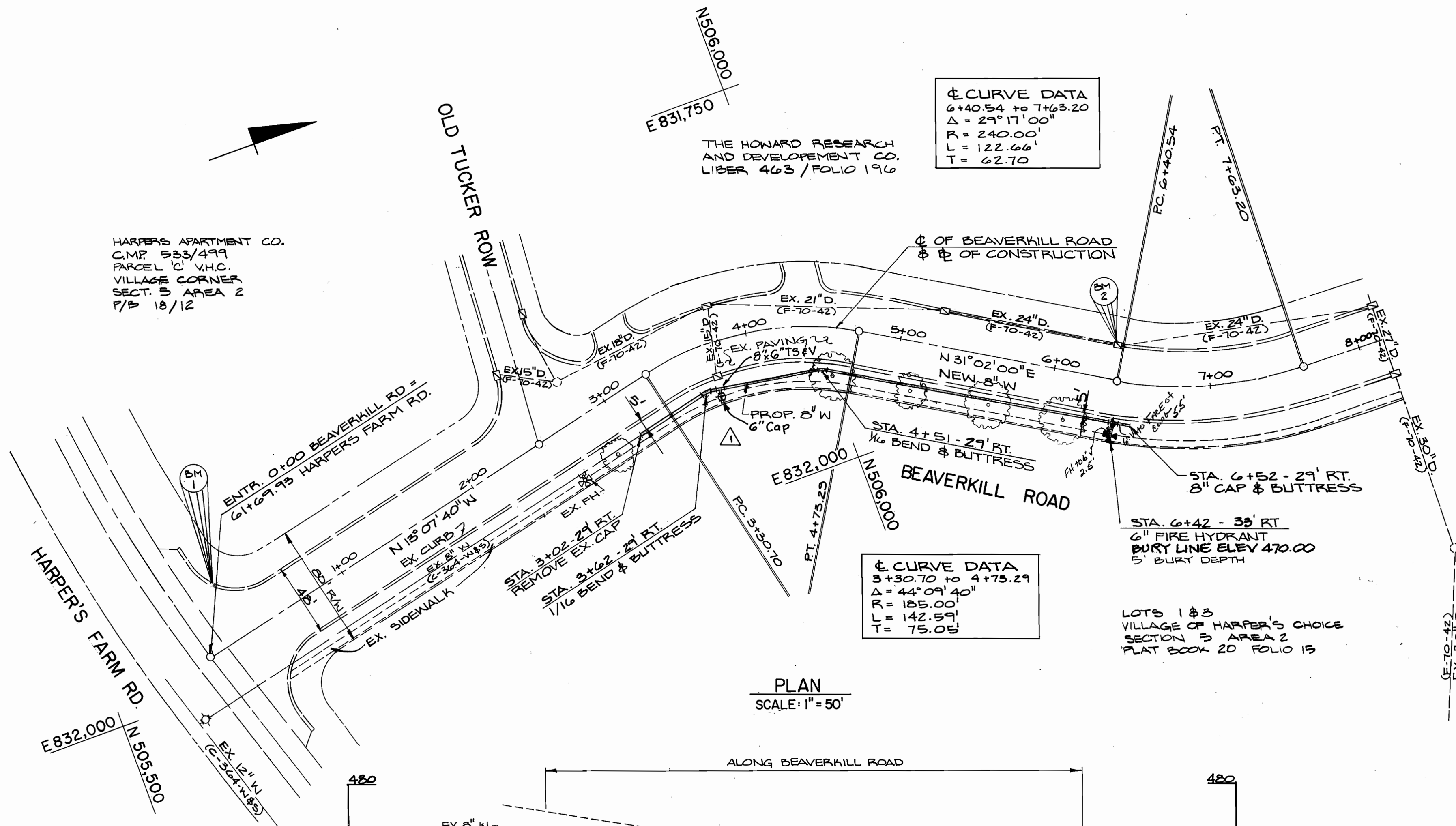
**BENCH MARK DATA**  
 BM-1 ELEV. 481.92  
 CUT IN TOP OF CURB, NE OF INT. AT  
 BEAVERKILL ROAD & HARPER'S FARM RD.  
 BM-2 ELEV. 473.77  
 CUT IN TOP OF CURB AT CATCH BASIN ON  
 W. SIDE OF BEAVERKILL RD. APPROX.  
 400' N. OF INT. AT HARPER'S  
 FARM ROAD.

**GENERAL NOTES**

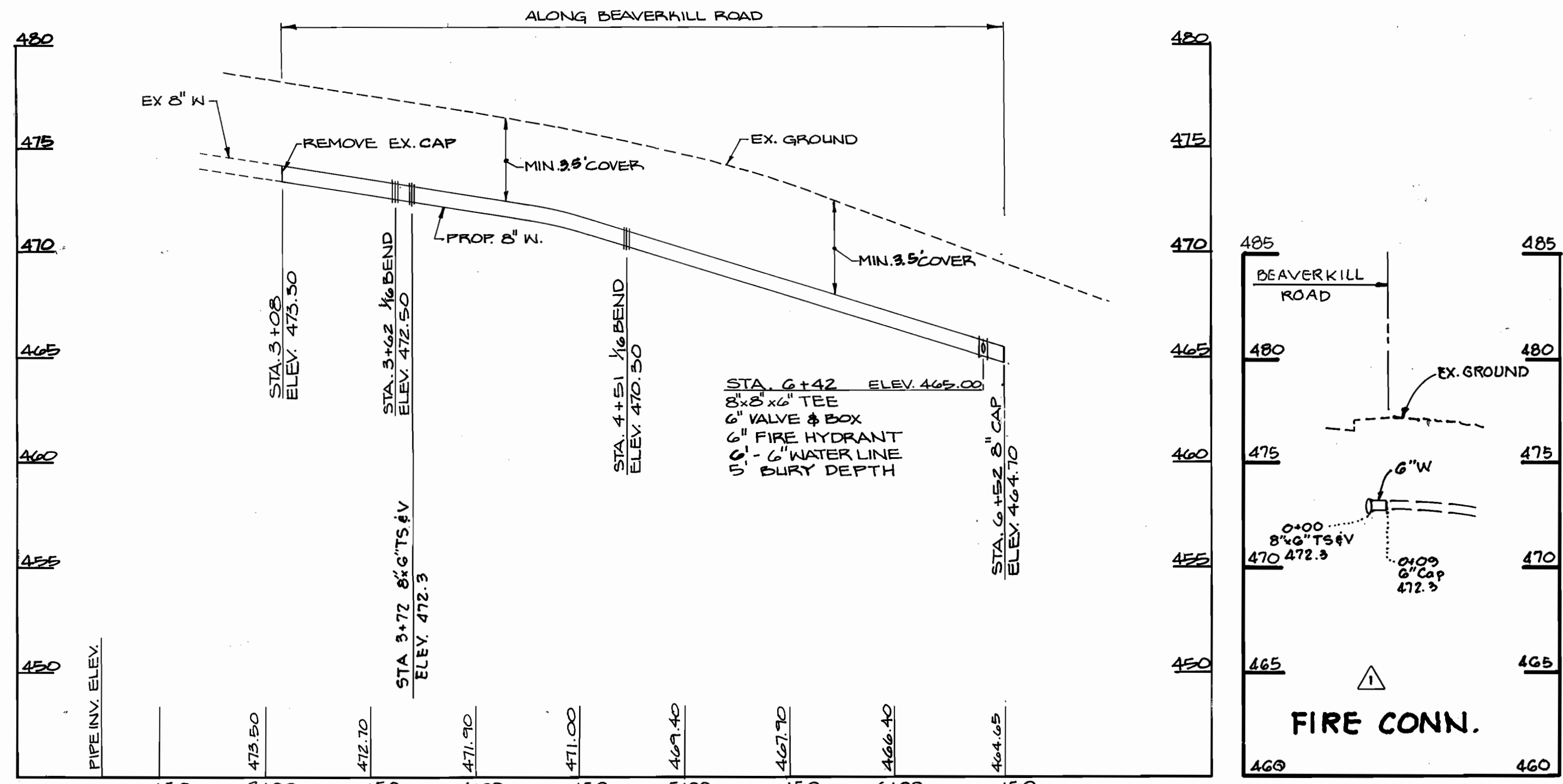
- APPROXIMATE LOCATION OF EXISTING UTILITIES ARE SHOWN. THE CONTRACTOR SHALL TAKE ALL NECESSARY PRECAUTIONS TO PROTECT EXISTING UTILITIES AND SERVICE AND TO MAINTAIN UNINTERRUPTED SERVICE. ANY DAMAGE INCURRED DUE TO THE CONTRACTORS OPERATION SHALL BE REPAIRED IMMEDIATELY AT THE CONTRACTORS EXPENSE.
- ALL PIPE ELEVATIONS ARE INVERT ELEVATIONS.
- CONTRACTORS SHALL NOTIFY "MISS UTILITIES" (559-0100) AT LEAST 3 DAYS PRIOR TO BEGINNING ANY CONSTRUCTION SHOWN HEREON.
- FOR ALL STANDARD DETAILS SEE STANDARDS BOUND IN SPECIFICATIONS.
- CLEAR ALL UTILITIES BY A MINIMUM OF 6". CLEAR ALL POLES BY A MINIMUM OF 2'-0" OR TUNNEL AS REQUIRED. ANY COSTS INCURRED BY THE CONTRACTOR FOR TUNNELING OR BRACING POLES SHALL BE INCLUDED IN THE UNIT PRICE BID FOR EXCAVATION.
- ALL WATER MAINS SHALL HAVE A MINIMUM OF 3'-6" COVER UNLESS OTHERWISE NOTED.
- BLOCK ALL FITTINGS WITH CONCRETE, STANDARDS BOUND IN SPECIFICATIONS.
- BURY LINE ELEVATIONS ON FIRE HYDRANTS SHALL BE SET TO THE ELEVATIONS SHOWN ON THE DRAWING. SOIL AROUND HYDRANTS TO BE COMPACTED IN ACCORDANCE WITH SECTION 1003 OF THE STANDARD SPECIFICATION.
- ALL FIRE HYDRANTS SHALL BE STRAPPED TO THE TEE AND SHALL BE BUTTRESSED WITH CONCRETE IN ACCORDANCE WITH THE STANDARD DETAILS.
- ALL HORIZONTAL AND VERTICAL CONTROLS ARE BASED ON MD. STATE DATUM.
- ALL WATER MAINS SHALL BE D.I.P. UNLESS OTHERWISE NOTED.
- CONTRACTOR SHALL NOTIFY BALTIMORE GAS AND ELECTRIC CO. 72 HOURS PRIOR TO ANY CONSTRUCTION IN THE VICINITY OF ANY GAS AND ELECTRIC FACILITIES BY CALLING 539-8000 EXT. 69.
- TREES ARE TO BE PROTECTED FROM DAMAGE TO THE MAXIMUM EXTENT. ALL TREES LOCATED WITHIN THE CONSTRUCTION AREA ARE NOT TO BE REMOVED OR DAMAGED BY THE CONTRACTOR.
- ALL VALVES SHALL BE STRAPPED TO TEES IN ACCORDANCE WITH STANDARD DETAILS.
- CONTRACTOR SHALL REMOVE TREES, STUMPS AND ROOTS ALONG LINE OF EXCAVATION AS DIRECTED BY THE ENGINEER. PAYMENT FOR SUCH REMOVAL SHALL BE INCLUDED IN THE UNIT PRICE BID FOR EXCAVATION AND BACKFILL FOR WATER MAINS.
- PLACE REGULATION "MEN WORKING" AND WARNING SIGNS AS REQUIRED TO COMPLY WITH MARYLAND STATE HIGHWAY ADMINISTRATION MANUAL OF TRAFFIC CONTROL FOR HIGHWAY CONSTRUCTION AND MAINTENANCE OPERATIONS.
- THE CONTRACTOR SHALL NOTIFY THE C&P TELEPHONE CO. PRIOR TO ANY CONSTRUCTION IN BALTIMORE.
- SEDIMENT CONTROL SHALL BE ACCOMPLISHED IN ACCORDANCE WITH SITE DEVELOPMENT PLAN SDP-86-33-C AND ARTICLE 15 OF THE HOWARD COUNTY DESIGN MANUAL VOL. II STANDARD SPECIFICATIONS.

**CL. CURVE DATA**  
 G+40.54 TO T+63.20  
 $\Delta = 27^{\circ}17'00''$   
 R = 240.00'  
 L = 122.66'  
 T = 62.70'

**CL. CURVE DATA**  
 S+30.70 TO G+75.29  
 $\Delta = 44^{\circ}09'40''$   
 R = 185.00'  
 L = 142.59'  
 T = 75.08'



PLAN  
 SCALE: 1" = 50'



PROFILES  
 SCALE: HORIZ. 1" = 50'  
 VERT. 1" = 5'

THIS DEVELOPMENT PLAN IS APPROVED FOR SOIL EROSION AND SEDIMENT CONTROL BY THE HOWARD COUNTY SOIL CONSERVATION DISTRICT

APPROVED: *Stephen L. Jula* 12/6/85  
 SIGNATURE DATE  
 HOWARD CO. SOIL CONSERVATION DISTRICT

REVIEWED FOR HOWARD SOIL CONSERVATION DISTRICT AND MEETS TECHNICAL REQUIREMENTS

APPROVED: *John A. Mitchell* 12/5/85  
 SIGNATURE DATE  
 US SOIL CONSERVATION SERVICE

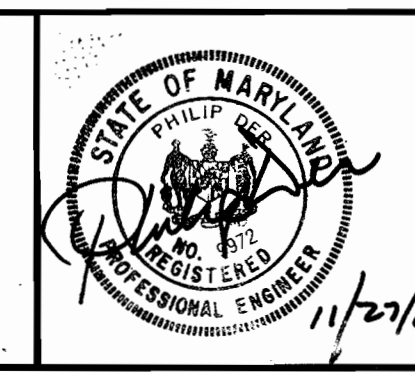
DEPARTMENT OF PUBLIC WORKS  
 HOWARD COUNTY, MARYLAND

*Gregory F. Newman* 12-6-85  
 DIRECTOR OF PUBLIC WORKS DATE

*Richard M. Berman* 12-6-85  
 CHIEF-BUREAU OF UTILITIES DATE

*Michael J. ...* 12-6-85  
 CHIEF- LAND DEVELOPMENT DIVISION - DATE

**HITNEY AILEY OX AGNANI** CONSULTING ENGINEERS  
 1850 York Road  
 Timonium Md. 21093  
 301-252-6060



DES: PD					
DRN: MAM					
CHK: PD					
DATE: 9/9/85					
BY: RJW					
NO. 1					
ADDED 8" X 6" TEE @ STA 3+72					
REVISION					
DATE: 11/27/85					

PLAN OF WATER MAIN  
 CONTRACT NO. 44-1423-D

600' SCALE MAP NO. 29 BLOCK NO.

WATER MAIN EXTENSION  
 BEAVERKILL ROAD  
 VILLAGE OF HARPER'S CHOICE  
 SECTION 5 AREA 2 LOT 1 & 3  
 ELECTION DISTRICT NO. 5  
 HOWARD COUNTY MARYLAND

SCALE AS SHOWN  
 SHEET 1 OF 1