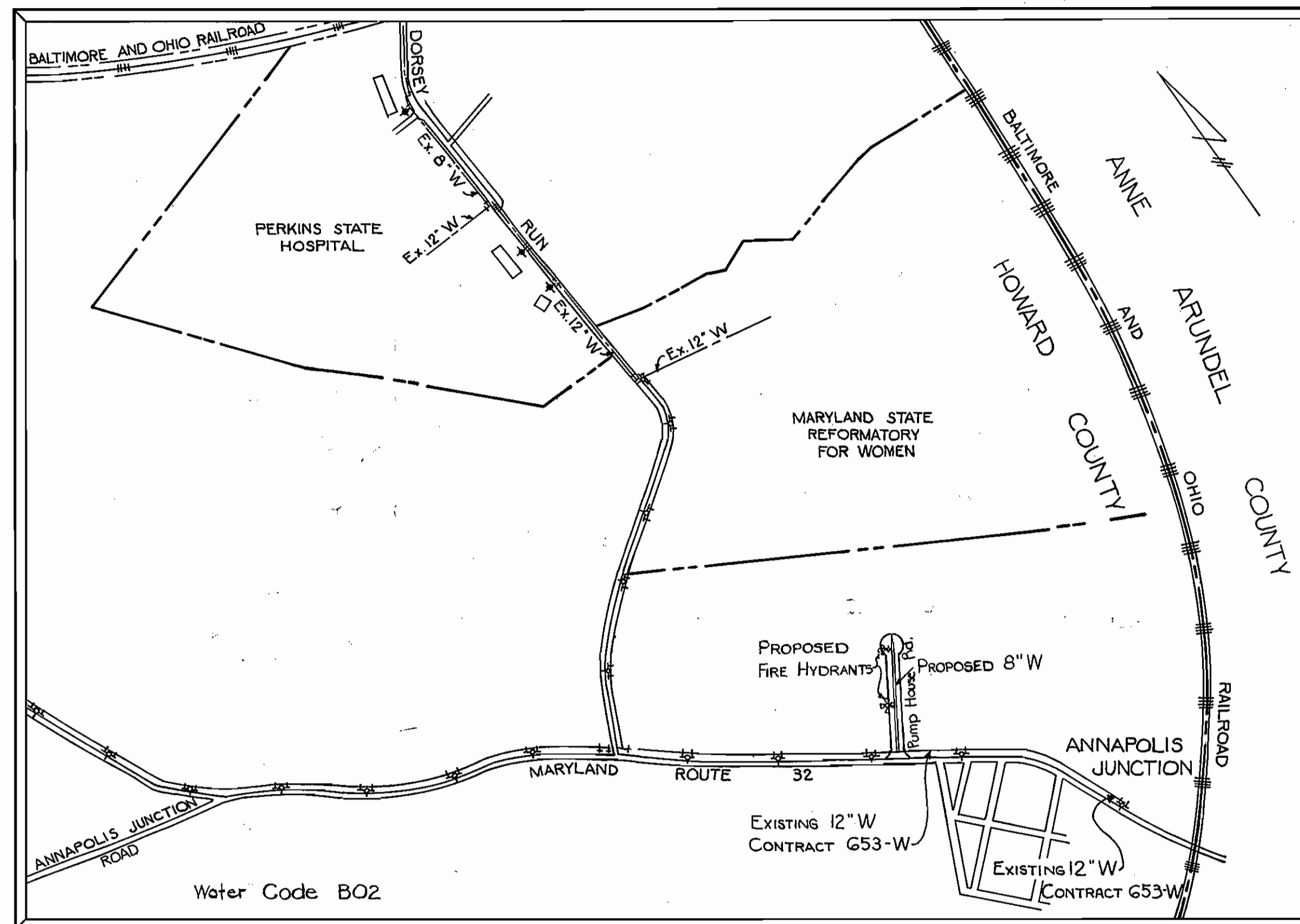


QUANTITY			
ITEM	ESTIMATED	AS BUILT	SUPPLIER
8" W	235674 LF	635 LF	CL 52 / ATLANTIC
6" W	40451 LF	56 LF	" "
FH	2 # UNIT	2 EA	A-423 / MUELLER
12"x8" TS&V	1 UNIT	1 EA	MUELLER
6" V	2 # UNIT	3 EA	MUELLER
1 1/2" WHC	20 LF	NOT INSTALLED NOT SHOWN	-
2" WHC	40 LF	40 LF	TYPE 'K', COPPER

**GENERAL NOTES**

- Approximate location of existing mains are shown. The contractor shall take all necessary precautions to protect existing mains and services and maintain uninterrupted supply. Any damage incurred shall be repaired immediately to the satisfaction of the Engineer, at the contractor's expense.
- All horizontal controls are based on Maryland State Coordinates.
- All vertical controls are based on U.S.G.S. Datum.
- All pipe elevations shown are invert elevations.
- Clear all utilities by a minimum of 6". Clear all poles by 2'-0" minimum or tunnel as required. Any cost incurred to the contractor for tunneling or bracing at poles shall be included in unit prices bid for construction of the main.
- For details not shown on the drawings use Howard County Standard Details.
- For materials and construction methods use Howard County Standard Specifications.
- Contractor shall locate existing utilities a minimum of two (2) weeks in advance of construction operations in the vicinity of proposed utilities at his own expense.
- Contractor shall notify the following utilities or agencies at least five (5) working days before starting work on these plans:
  - State Highway Administration - 531-5533
  - Baltimore Gas & Electric Company - Underground Electric Distribution Customer Service - 685-0123
  - Baltimore Gas & Electric Company - Underground Gas Distribution Customer Service - 685-0123
  - Engineering - "Damage Control" - 234-5621
  - "Miss Utility" - 1-559-0100
  - Chesapeake & Potomac (C&P) Telephone Company - 725-9976
  - American Telephone and Telegraph - Cable Location Division - 393-3553
  - Colonial Pipeline Company - 795-1390
  - Bureau of Utilities Howard County - 992-2366
- Trees are to be protected from damage to maximum extent. Trees located within the construction strip are not to be removed or damaged by the contractor.
- Contractor shall remove trees, stumps and roots along line of excavation as directed by the Engineer. Payment for such removal shall be included in the unit price bid for construction of the main.
- Place regulation "Men Working" and warning signs as required to comply with Maryland State Highway Administration Manual of Traffic Control for Highway Construction and Maintenance Operations.
- All water mains to be D.I.P. unless otherwise noted.
- Top of all water mains to have a minimum of 3-1/2' cover unless otherwise noted.
- Valves adjacent to tees shall be strapped to tees.
- Block all fittings with concrete.
- Bury line elevations on fire hydrants shall be set to the elevations shown on the drawings. All fire hydrants shall be strapped and buttressed with concrete in accordance with standard details. Soil around the fire hydrant to be compacted in accordance with Sections 1003 and 1008 of the Standard Specifications.
- All water house connections shall be for an inside meter setting.
- The contractor shall not operate any water main valves on the existing system.
- For all copper water house connections, utilize flared type fittings only.



NO. OF WHC ----- 3  
 NO. OF SHC ----- None  
 TYPE OF BUILDING ----- Commercial  
 DRAINAGE AREA ----- 1.16 Acre

Scale: 1" = 600'

Sediment Control Measures will be implemented in accordance with Article No. 15 of the Specifications & with Road Construction Plan E-86-65; Drawing Sediment & Erosion Control

REVIEWED FOR HOWARD SOIL CONSERVATION DISTRICT AND MEETS TECHNICAL REQUIREMENT  
*James M. DeLo* 1-8-86  
 SIGNATURE DATE  
 U.S. SOIL CONSERVATION SERVICE

This Development Plan is approved for Soil Erosion and Sediment Control by the Howard Soil Conservation District.

APPROVED:  
*Stephen L. Puder* 1/8/86  
 Howard S.C.D. DATE

DEPARTMENT OF PUBLIC WORKS  
 HOWARD COUNTY, MARYLAND

*Robert N. Nemo* 1-8-86  
 DIRECTOR OF PUBLIC WORKS DATE  
*Robert B. Berman* 1-10-86  
 CHIEF, BUREAU OF UTILITIES DATE

*William J. Puder* 1-13-86  
 CHIEF, BUREAU OF ENGINEERING DATE  
*William J. Puder* 1-13-86  
 CHIEF, LAND DEVELOPMENT DIV. DATE

PURDUM & JESCHKE  
 ENGINEERS  
 1029 N. CALVERT ST.  
 BALTIMORE, MARYLAND



DES: ATR			
DRN: KATE			
CHK: ATR			
DATE: 10-10-85	BY: LBB	NO. 1	REVISION: Deleted 6" Mains & WHCs to Lots B & C
			DATE: 7/31/86

VICINITY MAP & GENERAL NOTES

600' SCALE MAP NO. BLOCK NO.

PROPERTY OF C-W AND COMPANY  
 6th ELECTION DISTRICT  
 ROUTE 32  
 CONTRACT NO. 44-1418-D

SCALE  
 1" = 600'  
 SHEET  
 1 OF 2

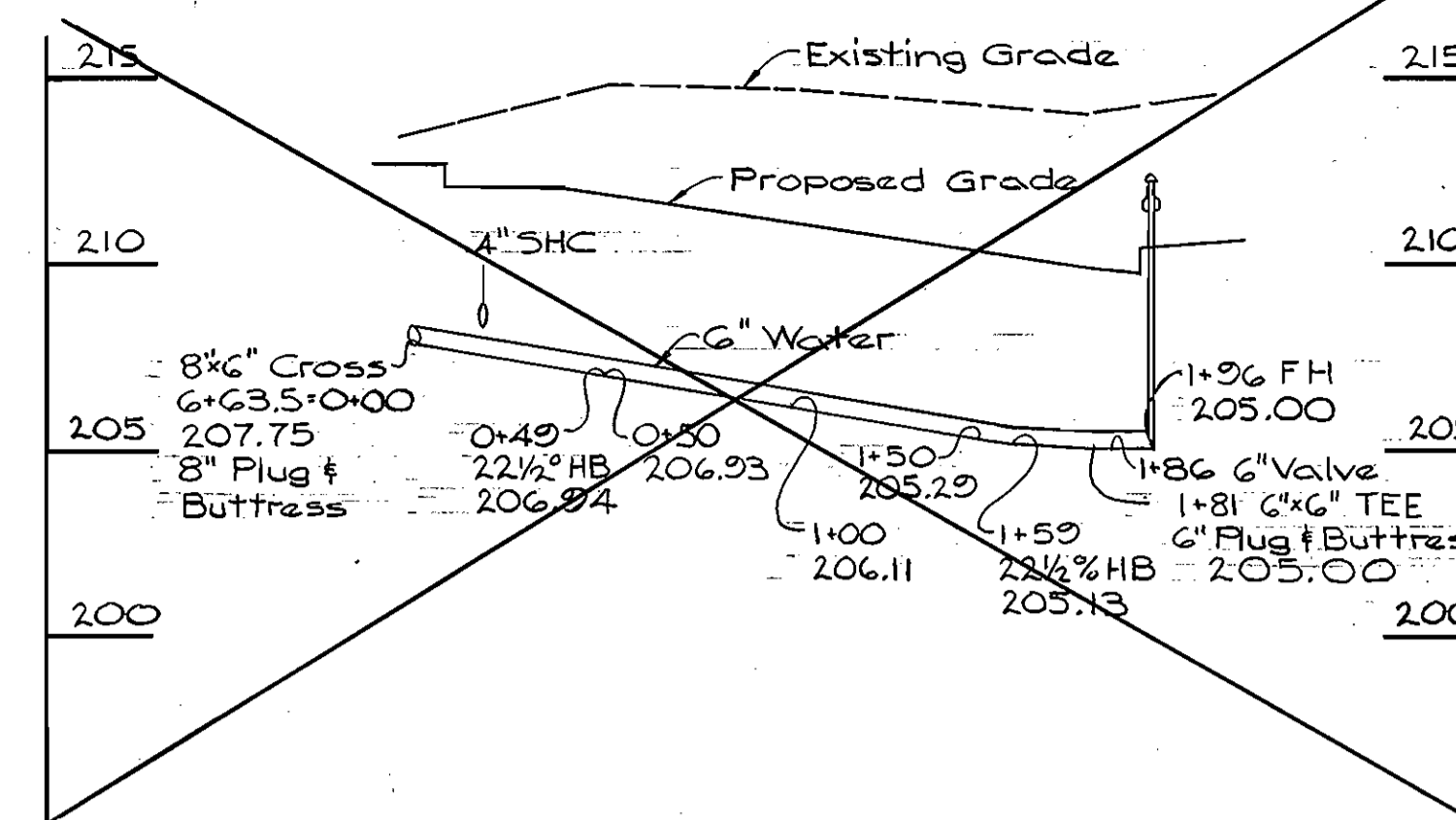
**BENCH MARKS**

BM No.1 Elev. 263.18  
Howard County Control 1943009 - 2.5'  
from the edge of Md. Rte. 32.

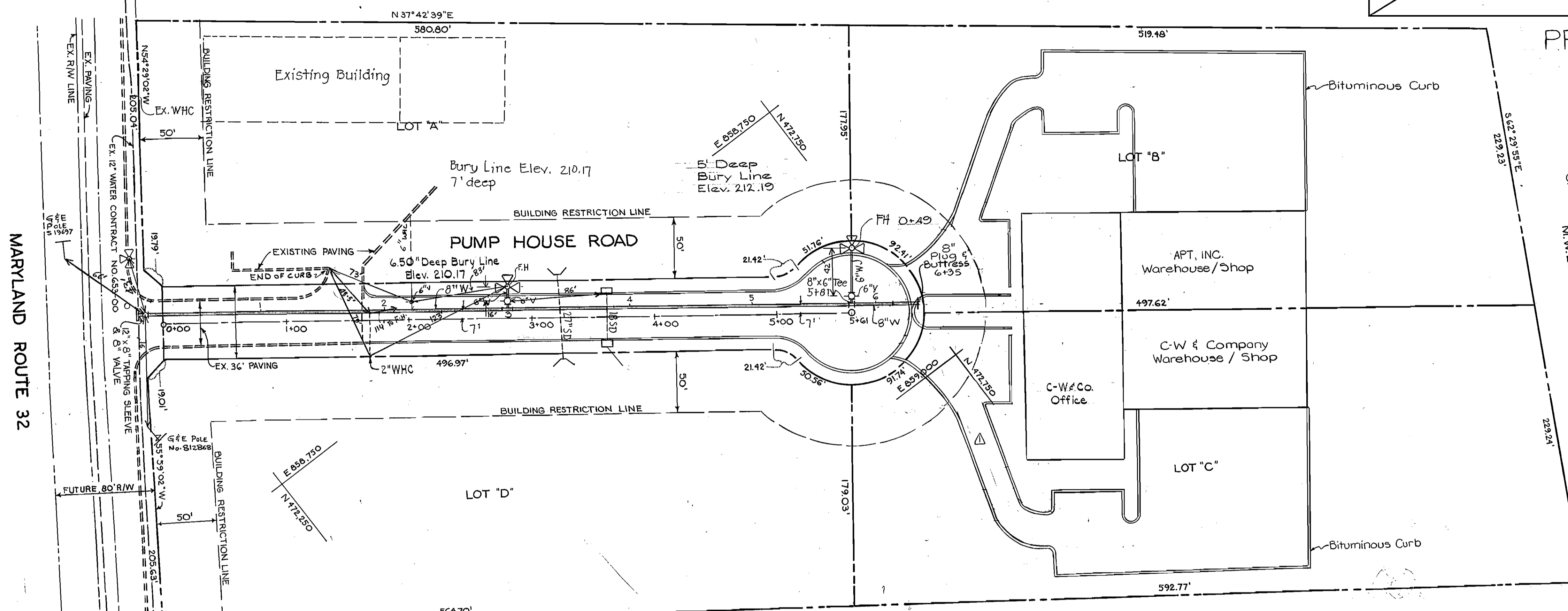
BM No.2 Elev. 221.97  
Howard County Control 1944004 - 3.3'  
from the edge of Md. Rte. 32.

NOTE: The site Development Plan  
for Lots B & C (SDP 86-134)  
has been revised.

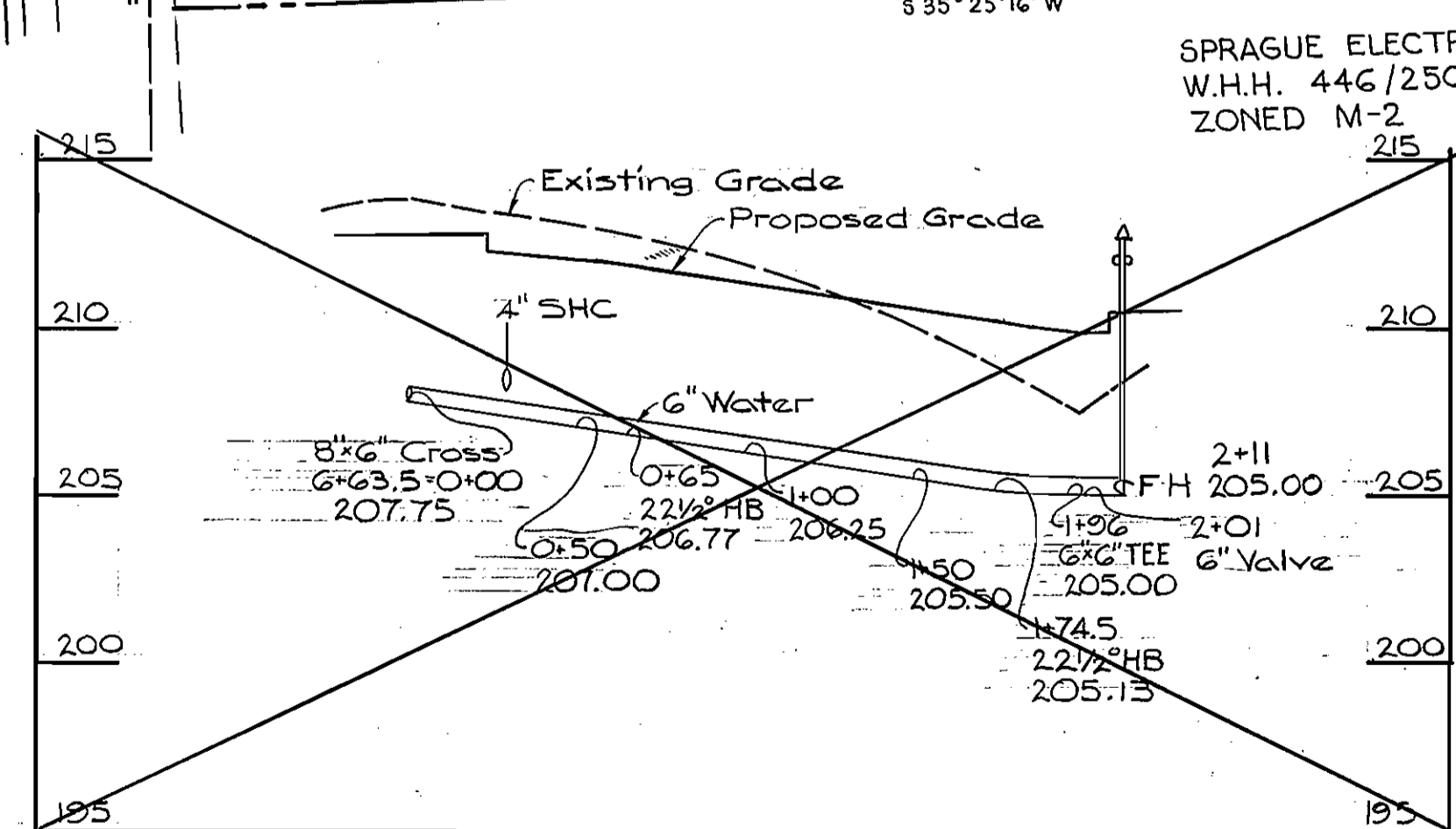
H. KARL YENSER  
R.H.M. 357/262  
ZONED M-2



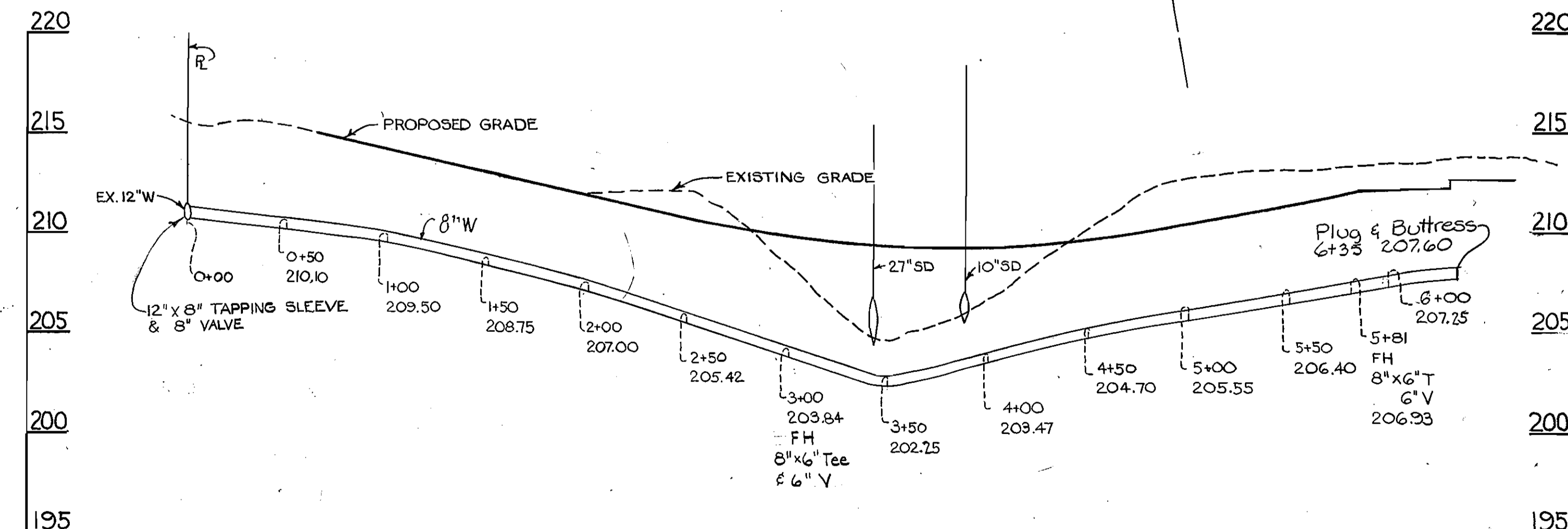
**PROFILE**  
H: 1" = 50'  
V: 1" = 5'



**PLAN**  
Scale: 1" = 50'



**PROFILE**  
H: 1" = 50'  
V: 1" = 5'



**PROFILE**  
H: 1" = 50'  
V: 1" = 5'

Sediment Control Measures will be implemented in accordance with Article No. 15 of the Specifications & with Road Construction Plan F-36-65; Drawing Sediment & Erosion Control

REVIEWED FOR HOWARD SOIL CONSERVATION DISTRICT AND MEETS TECHNICAL REQUIREMENT  
*James M. Nelson* 1-8-86  
SIGNATURE DATE  
U.S. SOIL CONSERVATION SERVICE

This Development Plan is approved for Soil Erosion and Sediment Control by the Howard Soil Conservation District.

APPROVED:  
*Stephen L. Fisher* 1-8-86  
HOWARD S.C.D. DATE

DEPARTMENT OF PUBLIC WORKS  
HOWARD COUNTY, MARYLAND

*Stephen L. Fisher* 1-13-86  
DIRECTOR OF PUBLIC WORKS DATE

*William J. Pugh* 1-13-86  
CHIEF, BUREAU OF ENGINEERING DATE

PURDUM & JESCHKE  
ENGINEERS  
1029 N. CALVERT ST.  
BALTIMORE, MARYLAND



DES: ATR			
DRN: KATE			
CHK: ATR			
DATE: 10-10-85			
BY: LBB	NO. 1	REVISION	Deleted 6" Mains & WHCs to Lots B & C 7/31/82

PLAN & PROFILE  
WATER MAIN EXTENSION

PROPERTY OF C-W AND COMPANY  
6th ELECTION DISTRICT  
ROUTE 32

CONTRACT NO. 44-1418-D

SCALE  
1" = 50'  
SHEET  
2 OF 2

AS-BUILT JAN 27, 87