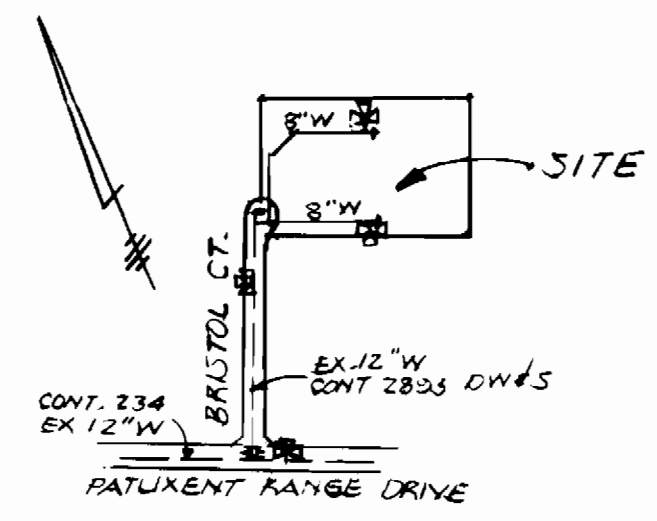


QUANTITIES			
ITEM	QUANTITY	AS-BUILT	SUPPLIER
8" WATER	892	892	ATLANTIC
6" WATER	35	35	"
2" X 8" TAPPING	1	1	MUELLER
8" VALVE	1	1	" A-423
6" VALVE (FH)	2	2	"
6" FH	2	2	"
6" VALVE	1	1	"

D.P. CL 52

ORAIN. AREA
NO. OF WHC 1
NO. OF BLDGS 1



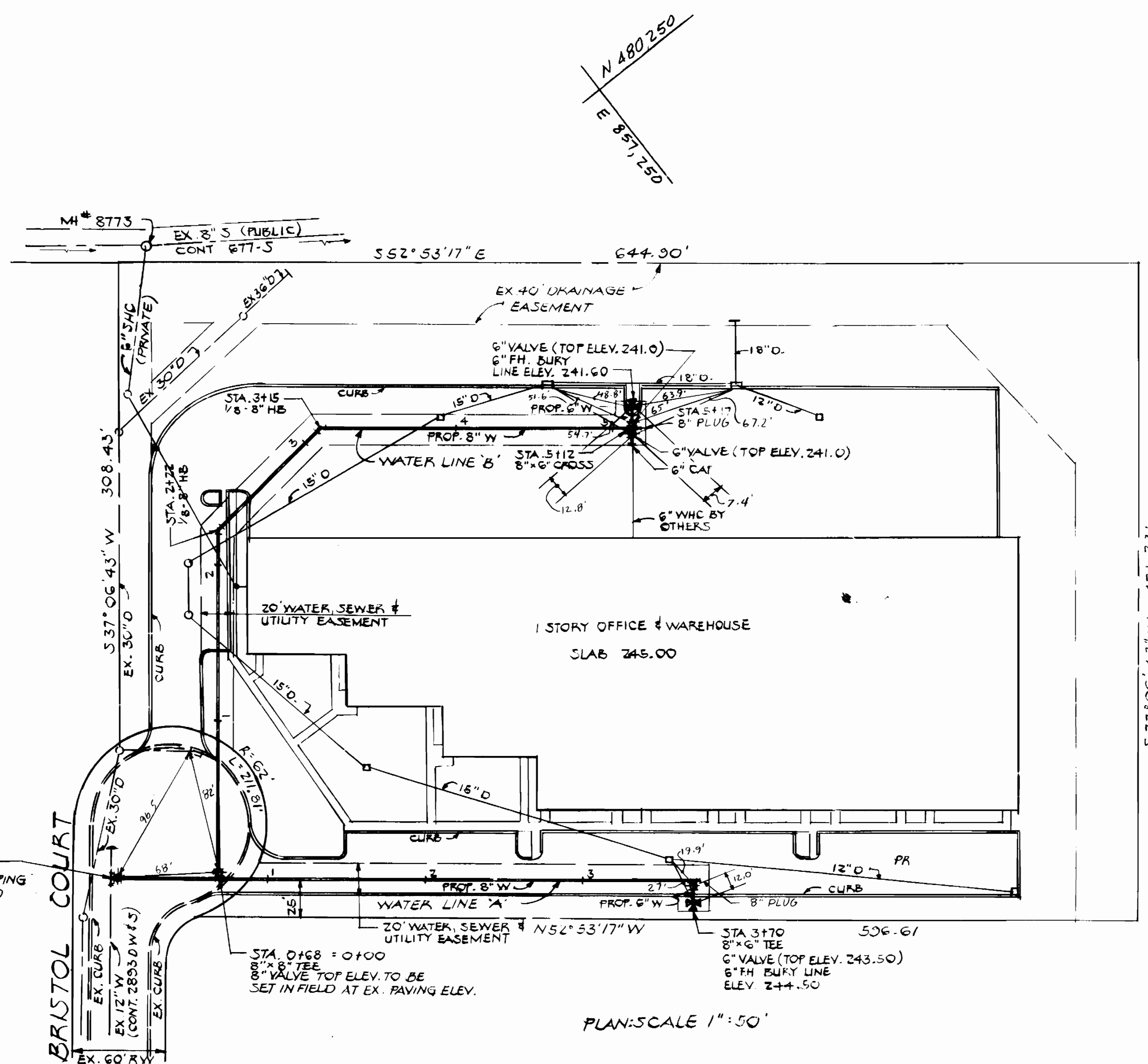
WATER CODE E-14
SEWER CODE 4203400

LOCATION PLAN
SCALE: 1" = 600'

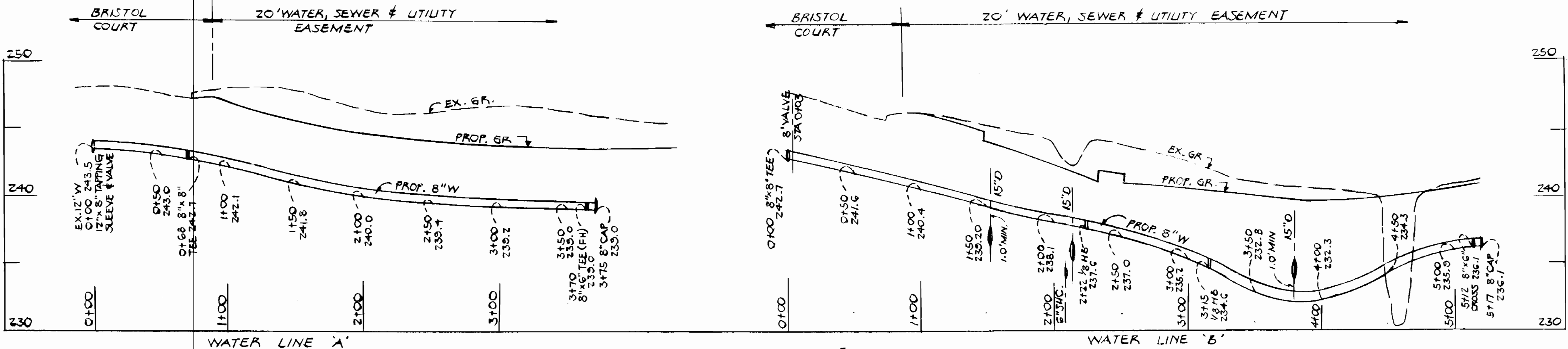
GENERAL NOTES:

1. ALL WATER MAINS TO BE C.I.P. OR D.I.P. UNLESS OTHERWISE SHOWN.
2. TOP OF ALL WATER MAINS TO HAVE A MIN. OF 3'-5" COVER UNLESS OTHERWISE SHOWN.
3. ALL VALVES TO BE STRAPPED TO TEES IN ACCORDANCE WITH STANDARD DETAILS.
4. BLOCK ALL FITTINGS WITH CONCRETE. SEE STANDARDS BOUND IN SPECS.
5. FIRE HYDRANTS SHALL BE SET TO THE BURY LINE ELEVATIONS SHOWN ON THE DRWGS. ALL FIRE HYDRANTS SHALL BE STRAPPED & BUTTRESSED WITH CONCRETE IN ACCORDANCE WITH STANDARD DETAILS. SOIL AROUND FIRE HYDRANTS SHALL BE COMPACTED IN ACCORDANCE WITH SECTION 1003 OF THE STANDARD SPECS.
6. APPROXIMATE LOCATIONS OF EXISTING MAINS ARE SHOWN. THE CONTRACTOR SHALL TAKE ALL NECESSARY PRECAUTIONS TO PROTECT EXISTING MAINS AND SERVICES AND MAINTAIN UNINTERRUPTED SUPPLY. ANY DAMAGE SHALL BE REPAIRED IMMEDIATELY.
7. ALL HORIZONTAL CONTROLS ARE BASED ON MD. STATE COORDINATES.
8. ALL VERTICAL CONTROLS ARE BASED ON U.S.G.S. DATUM.
9. ALL PIPE ELEVATIONS SHOWN ARE INVERT ELEVATIONS.
10. CLEAR ALL UTILITIES BY A MINIMUM OF 6" CLEAR, ALL POLES BY 2'-0" MIN. OR TUNNEL AS REQ.
11. FOR ALL STD. DETAILS, SEE STANDARDS BOUND IN SPECS.
12. CONTRACTOR SHALL LOCATE EXISTING UTILITIES IN ADVANCE OF CONSTRUCTION OPERATIONS IN THE VICINITY OF PROPOSED UTILITIES.
13. CONTRACTOR SHALL NOTIFY THE FOLLOWING UTILITIES OR AGENCIES AT LEAST 5 DAYS BEFORE STARTING WORK:
 - STATE HIGHWAY ADMIN. 531-5533
 - BALTO. G. & E. CO. - CONTRACTORS SERVICES - 561-2585
 - BALTO. G. & E. CO. - TROUBLE SHOOTING - 298-9013
 - BALTO. G. & E. CO. - UNDERGROUND DAMAGE CONTROL 234-5621
 - MISS UTILITY 1-559-0100
 - BUREAU OF UTILITIES, HO. CO. D.P.W. 392-2366
 - A.T. & T. CABLE LOCATION DIVISION 1-393-3553
 - COLONIAL PIPELINE CO. 781-4641
14. PLACE REGULATION MEN WORKING SIGNS & WARNING SIGNS AS REQ. TO COMPLY WITH MD. S. H. A. MANUAL OF TRAFFIC CONTROL FOR HIGHWAY CONSTRUCTION & MAINTENANCE OPERATIONS
15. WATER METER SETTINGS ARE INSIDE METER SETTINGS UNLESS OTHERWISE SHOWN.

BENCH MARK
W.P. #A, BM #BA ELEV. 243.11
80' FROM STATION DRIVE ON PATIENT RANGE DRIVE.



PLAN: SCALE 1" = 50'



PROFILE
SCALE HORZ.: 1" = 50'
VERT.: 1" = 5'

SEDIMENT CONTROL MEASURES FOR THIS CONTRACT WILL BE IMPLEMENTED IN ACCORDANCE WITH ARTICLE 15 OF THE STANDARD SPECIFICATIONS AND JOP 85-43A

REVIEWED FOR THE HOWARD SOIL CONSERVATION DISTRICT & MEETS TECHNICAL REQUIREMENTS.

[Signature] 11-25-85
U.S. SOIL CONSERVATION DISTRICT DATE

HOWARD SOIL CONSERVATION DISTRICT
THIS PLAN IS APPROVED FOR SOIL EROSION & SEDIMENT CONTROL BY HOWARD SOIL CONSERVATION DISTRICT

[Signature] 11/21/85
HOWARD S.C.D. DATE

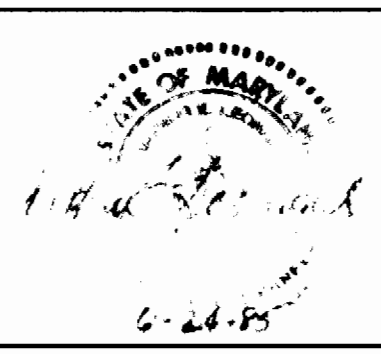
DEPARTMENT OF PUBLIC WORKS
HOWARD COUNTY, MARYLAND

[Signature] 11-26-85
DIRECTOR OF PUBLIC WORKS DATE

[Signature] 11-26-85
CHIEF BUREAU OF UTILITIES DATE

SURVEYORS & ENGINEERS
HUDKINS ASSOCIATES, INC.

200 EAST JOPPA ROAD
ROOM 101, SHELL BUILDING
TOWSON, MARYLAND 21284



DES:	
DRN:	
CHK:	
DATE:	
BY	NO.
REVISION	
DATE	

WATER MAIN
PLAN AND PROFILE

600' SCALE MAP NO. _____ BLOCK NO. _____

PARCEL 'L' BLOCK 'E'
BALTIMORE WASHINGTON INDUSTRIAL PARK
ELECT. DIST 6 HOWARD COUNTY, MD.
JUNE 20, 1985
CONTRACT NO. 44-1417-D

SCALE AS SHOWN
SHEET 1 OF 1