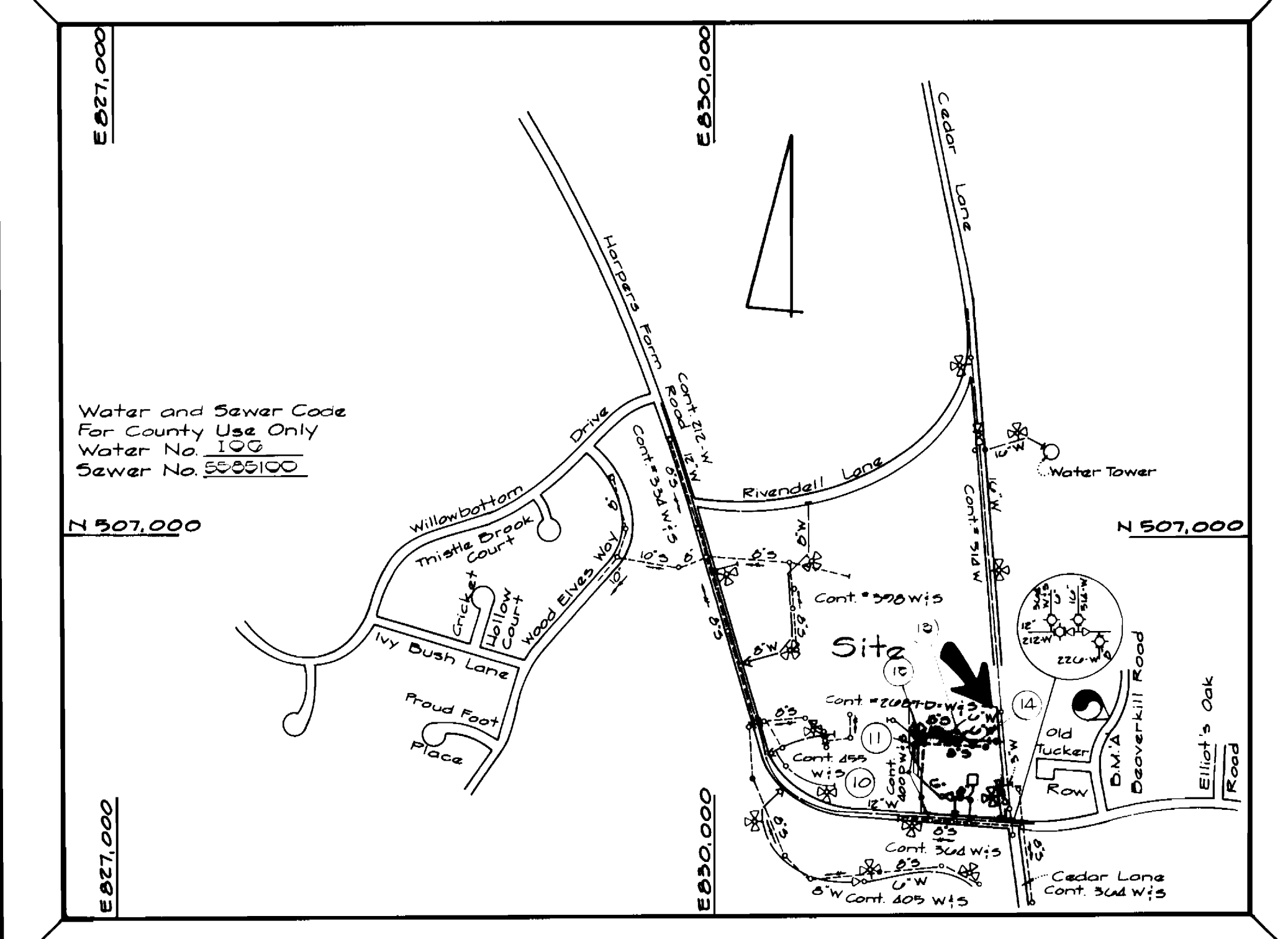
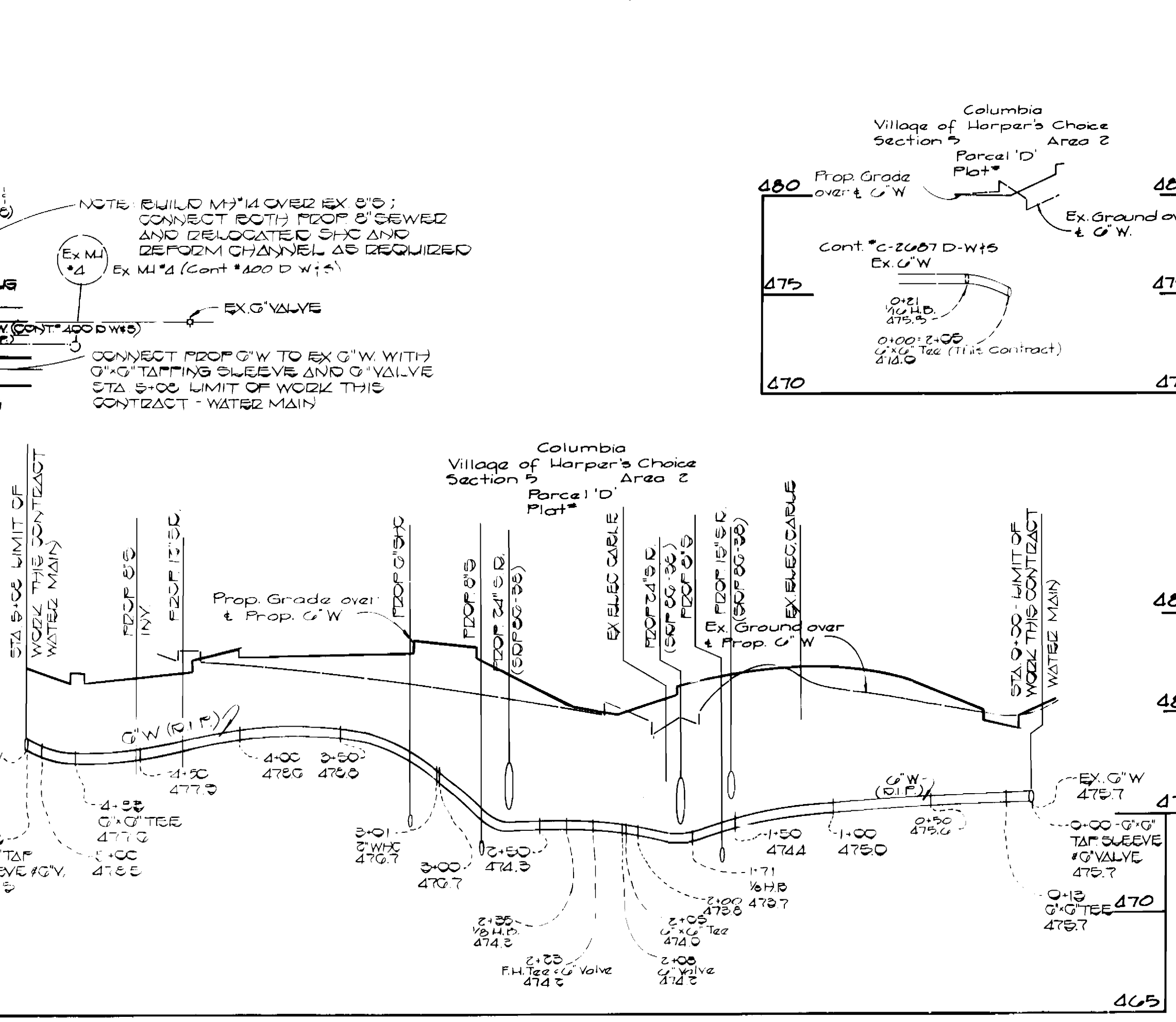
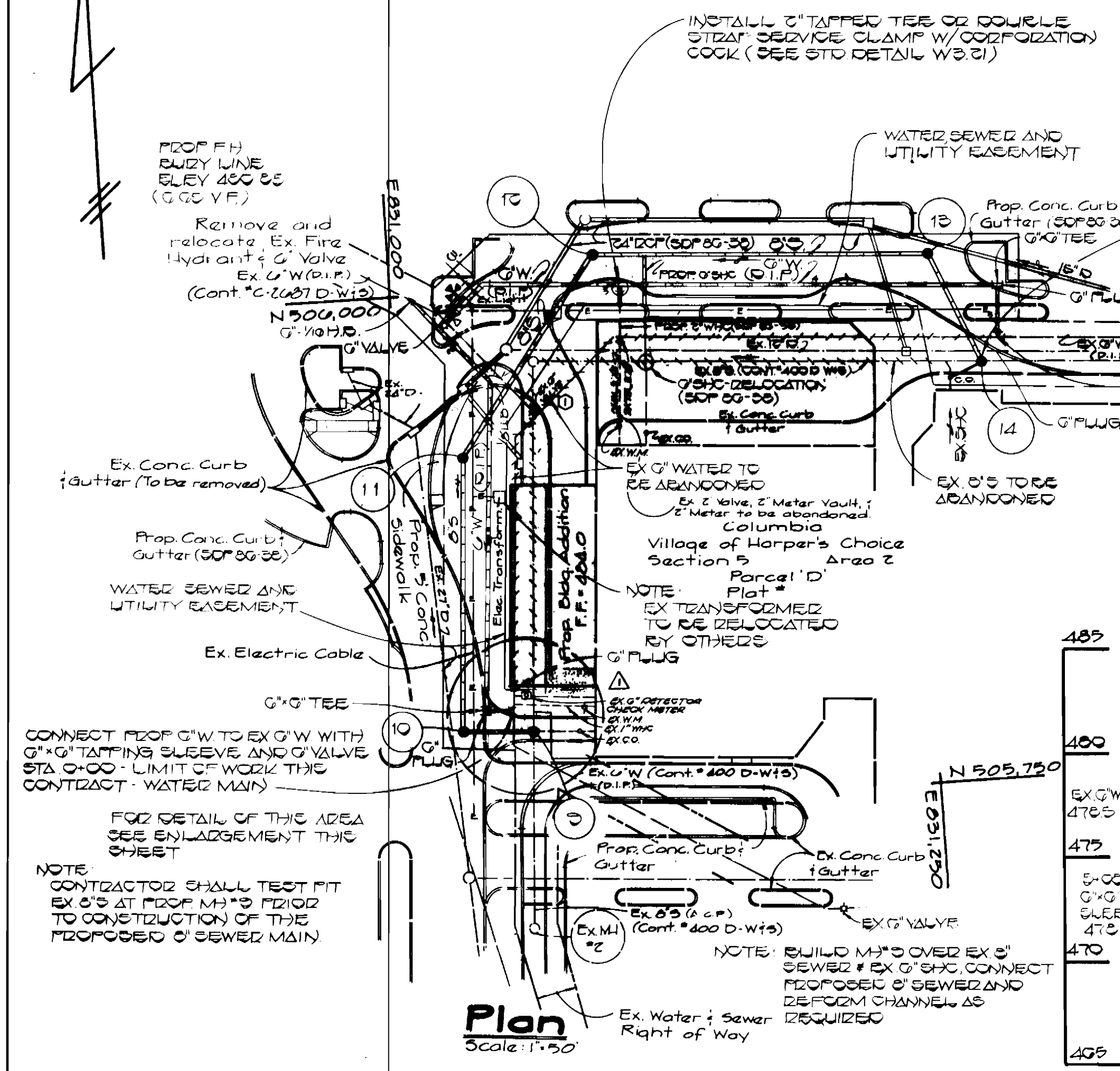


Benchmarks

B.M. 'A' Elev. = 460.89
"x" cut in top of curb @ inlet on West side of Beaverkill Road



TYPE OF BUILDING Supermarket
NO. OF LOTS 1
NO. OF WATER HOUSE CONN. 2
NO. OF SEWER HOUSE CONN. 1
DRAINAGE AREA 1.14 sq. ft. Retention

VICINITY MAP
SCALE: 1" = 600'
GENERAL NOTES

- 1. APPROXIMATE LOCATION OF EXISTING MAINS ARE SHOWN. THE CONTRACTOR SHALL TAKE ALL NECESSARY PRECAUTIONS TO PROTECT EXISTING MAINS AND SERVICES AND MAINTAIN UNINTERRUPTED SUPPLY. ANY DAMAGE INCURRED SHALL BE REPAIRED IMMEDIATELY TO THE SATISFACTION OF THE ENGINEER AT THE CONTRACTOR'S EXPENSE.
- 2. ALL HORIZONTAL CONTROLS ARE BASED ON MARYLAND STATE COORDINATES.
- 3. ALL VERTICAL CONTROLS ARE BASED ON U.S.S. DATA.
- 4. ALL PIPE ELEVATIONS SHOWN ARE INVERT ELEVATIONS.
- 5. CLEAR ALL UTILITIES BY A MINIMUM OF 6". CLEAR ALL POLES BY 2'-0" MINIMUM OR TUNNEL AS REQUIRED. THE OWNER HAS CONTACTED THE UTILITIES COMPANIES AND HAS MADE ARRANGEMENTS FOR BRACING OF POLES AS SHOWN ON THE DRAWINGS. IN THE EVENT THE CONTRACTOR'S WORK REQUIRES THE BRACING OF ADDITIONAL POLES, ANY COST INCURRED BY THE OWNER FOR THE BRACING OF ADDITIONAL POLES OR DAMAGES SHALL BE DEDUCTED FROM MONEY OWNED BY THE CONTRACTOR. THE CONTRACTOR SHALL COORDINATE WITH THE UTILITY COMPANIES TO SCHEDULE THE BRACING OF THE POLES.
- 6. CONTRACTOR SHALL NOTIFY THE FOLLOWING UTILITIES OR AGENCIES AT LEAST FIVE (5) WORKING DAYS BEFORE STARTING WORK SHOWN ON THESE PLANS:
AT & T COMPANY: 922-2196
BALTIMORE GAS & ELECTRIC COMPANY - CONTRACTOR SERVICES: 561-2585
BALTIMORE GAS & ELECTRIC COMPANY - UNDER GROUND DAMAGE CONTROL: 234-5621
BALTIMORE GAS & ELECTRIC COMPANY - TROUBLE SHOOTING: 298-9013
COLONIAL PIPELINE COMPANY: 795-1390
MISS UTILITY: 1-559-0100
CHESAPEAKE & POTOMAC TELEPHONE COMPANY: 725-9976
BUREAU OF UTILITIES - HOWARD COUNTY: 992-2366
- 7. TREES ARE TO BE PROTECTED FROM DAMAGE TO MAXIMUM EXTENT. TREES LOCATED WITHIN THE CONSTRUCTION STRIP ARE NOT TO BE REMOVED OR DAMAGED BY THE CONTRACTOR.
- 8. CONTRACTOR SHALL REMOVE TREES, STUMS AND ROOTS ALONG LINE OF EXCAVATION AS DIRECTED BY THE ENGINEER. PAYMENT FOR SUCH REMOVAL SHALL BE INCLUDED IN THE UNIT PRICE BID FOR CONSTRUCTION OF THE MAIN.
- 9. PLACE REGULATION "MEN WORKING" AND WARNING SIGNS AS REQUIRED TO COMPLY WITH MARYLAND STATE HIGHWAY ADMINISTRATION MANUAL OF TRAFFIC CONTROL FOR HIGHWAY CONSTRUCTION AND MAINTENANCE OPERATION.
- 10. ALL SEWER MAINS SHALL BE C.S.P.X., R.C.S.P., P.V.C., V.C.P.X. OR A.C.P. CLASS 2400 UNLESS OTHERWISE NOTED.
- 11. CONTRACTOR SHALL PROVIDE A JOINT IN ALL SEWER MAINS WITHIN 2'-0" OF EXTERIOR MANHOLE WALLS.
- 12. ALL MANHOLES SHALL BE 4'-0" INSIDE DIAMETER, UNLESS OTHERWISE NOTED.
- 13. MANHOLES SHOWN WITH 12" AND 16" WALLS ARE BRICK MANHOLES ONLY.
- 14. ALL WATER MAINS TO BE D.I.P. UNLESS OTHERWISE NOTED.
- 15. TOP OF WATER MAINS TO HAVE A MINIMUM OF 3'-6" COVER UNLESS OTHERWISE NOTED.
- 16. VALVES ADJACENT TO TEES SHALL BE STRAPPED TO TEES.
- 17. BURY LINE ELEVATIONS ON FIRE HYDRANTS SHALL BE SET TO THE ELEVATIONS SHOWN ON THE DRAWINGS. ALL FIRE HYDRANTS SHALL BE STRAPPED AND BUTTRESSED WITH CONCRETE IN ACCORDANCE WITH STANDARD DETAILS. SOIL AROUND THE FIRE HYDRANT TO BE COMPACTED IN ACCORDANCE WITH SECTION 1003 AND 1008 OF THE STANDARD SPECIFICATIONS.
- 18. ALL WATER HOUSE CONNECTIONS SHALL BE FOR AN INSIDE METER SETTING.
- 19. THE CONTRACTOR SHALL NOT OPERATE ANY WATER MAIN VALVES ON THE EXISTING SYSTEM.
- 20. WATER MAINS AND WATER HOUSE CONNECTION LINES MUST BE PLACED SO AS TO HAVE AT LEAST ONE (1) FOOT SEPARATION FROM THE SEWER MAIN OR SEWER HOUSE CONNECTION AS THEY PASS ABOUT IT.
- 21. MANHOLES LOCATED WITHIN PROPOSED ROADWAY SHALL HAVE STANDARD HEAVY TRAFFIC MANHOLE FRAME AND COVER, STANDARD DETAIL G 5.51.
- 22. MANHOLES DESIGNATED W.T. IN PLAN AND PROFILE SHALL HAVE WATERTIGHT FRAME AND COVERS, STANDARD DETAIL G 5.52. WHERE WATERTIGHT MANHOLE FRAME AND COVER IS USED, SET TOP OF FRAME 1'-6" ABOVE FINISHED GRADE UNLESS OTHERWISE NOTED ON THE DRAWINGS.
- 23. FOR ALL COPPER WATER HOUSE CONNECTIONS, UTILIZE FLARED TYPED FITTINGS ONLY.
- 24. FOR DETAILS NOT SHOWN ON THE DRAWINGS, AND FOR MATERIALS AND CONSTRUCTION METHODS, USE HOWARD COUNTY DESIGN MANUAL, VOLUME IV, STANDARD SPECIFICATIONS AND DETAILS FOR CONSTRUCTION. THE CONTRACTOR SHALL HAVE A COPY OF VOLUME IV ON THE JOB.
- 25. WHERE TEST PITS HAVE BEEN MADE ON EXISTING UTILITIES, THEY ARE NOTED BY THE SYMBOL [X] AT THE LOCATION OF THE TEST PIT. A NOTE OR NOTES CONTAINING THE RESULTS OF THE TEST PIT OR PITS IS INCLUDED ON THE DRAWINGS. EXISTING UTILITIES IN THE VICINITY OF THE PROPOSED WORK FOR WHICH TEST PITS HAVE NOT BEEN DUG SHALL BE LOCATED BY THE CONTRACTOR TWO WEEKS IN ADVANCE OF CONSTRUCTION OPERATIONS AT HIS OWN EXPENSE.
- 26. ALL FITTINGS SHALL BE BUTTRESSED OR ANCHORED WITH CONCRETE IN ACCORDANCE WITH THE STANDARD DETAILS UNDER OTHERWISE PROVIDED FOR ON THE DRAWINGS.
- 27. HOUSE(S) WITH THE SYMBOL "C.N.S." INDICATES THAT CELLAR CANNOT BE SERVED.

ITEM	QUANTITIES	AS-BUILT	SUPPLIED
0" SEWER	200 LF	200 LF	PELARED C.P.
0" SEWER	25 LF	25 LF	BRICK
MANHOLES	5 EA	5 EA	BRICK
0" WATER	450 LF	450 LF	GEN. PIPE
0" WATER	10 LF	10 LF	GEN. PIPE
Valve	2 Ea	2 Ea	GEN. PIPE
1/2" (1/2" x 1/2")	1 Ea	1 Ea	GEN. PIPE

COLUMBIA VILLAGE OF HARPER'S CHOICE 5/2 PARCEL D CONTRACT NO. 24-1414-D WATER AND SEWER MAIN RELOCATION HOWARD COUNTY, MARYLAND

SEDIMENT CONTROL MEASURES FOR THIS CONTRACT WILL BE IMPLEMENTED IN ACCORDANCE WITH SECTION 15 OF THE HOWARD COUNTY DESIGN MANUAL AND STANDARDS AND SPECIFICATIONS FOR SOIL EROSION AND SEDIMENT CONTROL IN DEVELOPING AREAS AND ALSO AS SHOWN ON THE GRADING AND SEDIMENT CONTROL PLAN SDP 86-38 REVIEW FOR HOWARD COUNTY SOIL CONSERVATION DISTRICT AND MEETS TECHNICAL REQUIREMENTS.

APPROVED: [Signature] AS-BUILT
HOWARD SOIL CONSERVATION DISTRICT DATE

Plan Scale: 1" = 50'

Profiles Scale: Horiz. 1" = 50' Vert. 1" = 5'

DEPARTMENT OF PUBLIC WORKS
HOWARD COUNTY, MARYLAND
DIRECTOR OF PUBLIC WORKS DATE 11-27-85
CHIEF, BUREAU OF UTILITIES DATE

FISHER, COLLINS, AND CARTER, INC.
CONSULTING ENGINEERS AND LAND SURVEYORS
8388 COURT AVENUE
ELLCOTT CITY, MARYLAND 21043
TERRELL A. FISHER

DES: T.A.F.
DRN: C.D.E.V.
CHK: T.A.F.
DATE: 8/1/85
BY NO. REVISION

WATER AND SEWER MAINS
PLAN AND PROFILE
600' SCALE MAP NO. 22 BLOCK NO.

COLUMBIA VILLAGE OF HARPER'S CHOICE 5/2 PARCEL D CONTRACT NO. 24-1414-D 5TH. ELECTION DISTRICT HOWARD COUNTY, MARYLAND
SCALE AS SHOWN
SHEET 1 OF 1