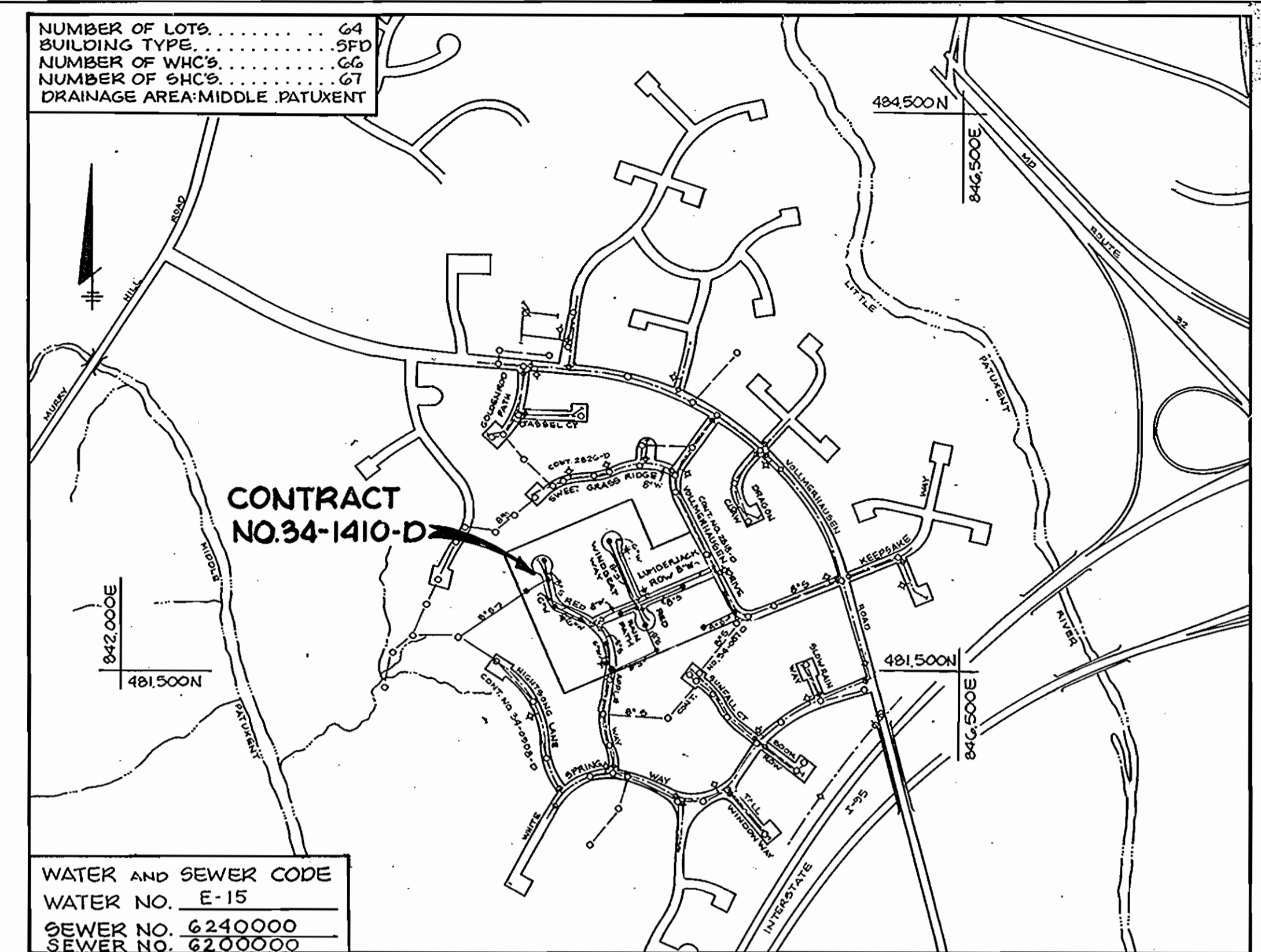


HOWARD SOIL CONSERVATION DISTRICT:  
 REVIEWED FOR HOWARD SOIL CONSERVATION DISTRICT  
 AND MEETS TECHNICAL REQUIREMENTS.

*John M. Helm* 10-29-86  
 U.S. SOIL CONSERVATION SERVICE DATE

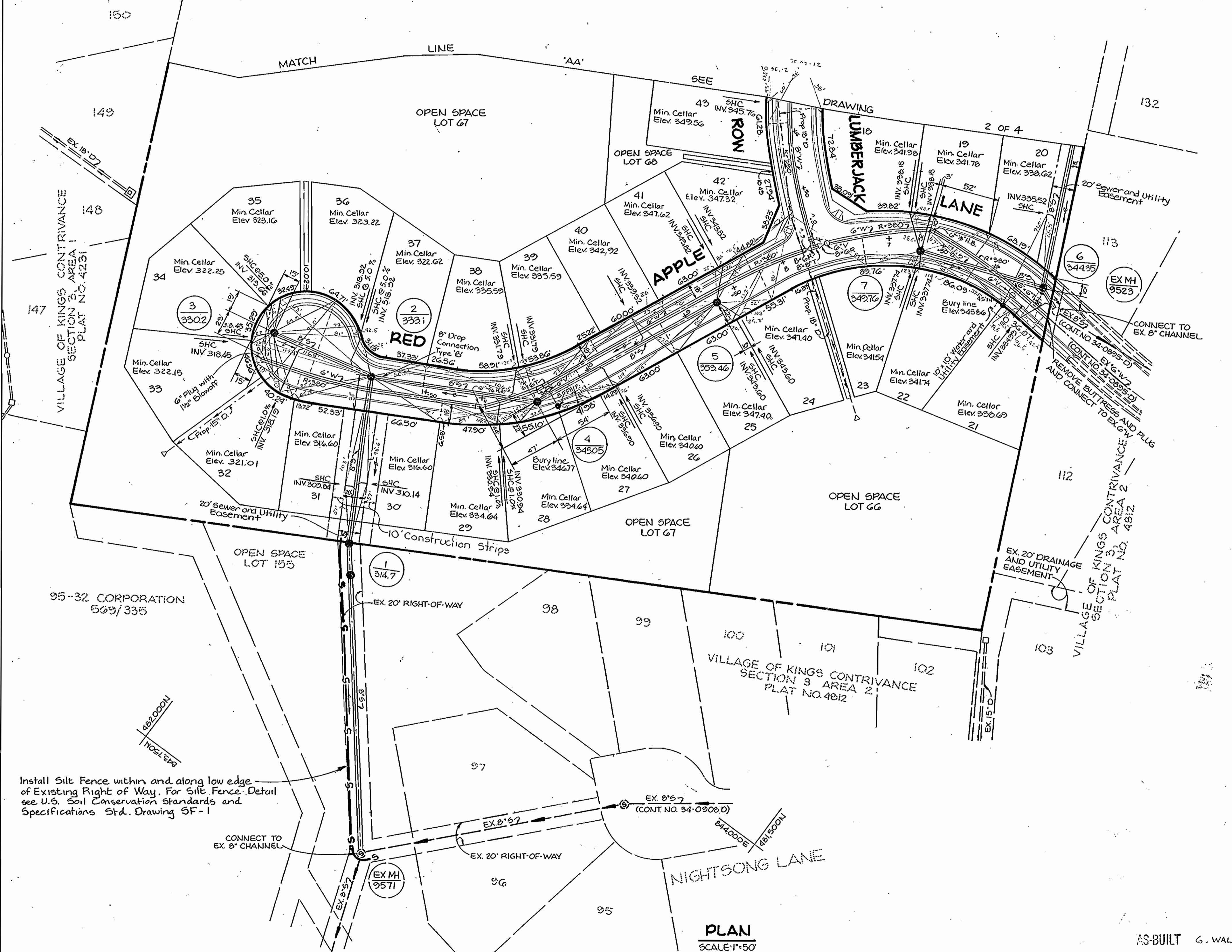
*Stephen L. Fisher* 10-29-86  
 HOWARD SOIL CONSERVATION DISTRICT DATE

SEDIMENT CONTROL MEASURES FOR THIS CONTRACT WILL BE  
 IMPLEMENTED IN ACCORDANCE WITH ARTICLE #15 OF THE  
 HOWARD COUNTY STANDARD SPECIFICATIONS AND AS PER  
 ROAD CONSTRUCTION PLANS #F-86-227



WATER AND SEWER CODE  
 WATER NO. E-15  
 SEWER NO. 6240000  
 SEWER NO. 6200000

**VICINITY MAP**  
 SCALE: 1" = 600'



**GENERAL NOTES**

- APPROXIMATE LOCATION OF EXISTING MAINS ARE SHOWN. THE CONTRACTOR SHALL TAKE ALL NECESSARY PRECAUTIONS TO PROTECT EXISTING MAINS AND SERVICES AND MAINTAIN UNINTERRUPTED SUPPLY. ANY DAMAGE INCURRED SHALL BE REPAIRED IMMEDIATELY TO THE SATISFACTION OF THE ENGINEER AT THE CONTRACTOR'S EXPENSE.
- ALL HORIZONTAL CONTROLS ARE BASED ON MARYLAND STATE COORDINATES.
- ALL VERTICAL CONTROLS ARE BASED ON U.S.G.S. DATA.
- ALL PIPE ELEVATIONS SHOWN ARE INVERT ELEVATIONS.
- CLEAR ALL UTILITIES BY A MINIMUM OF 6". CLEAR ALL POLES BY 2'-0" MINIMUM OR TUNNEL AS REQUIRED. THE OWNER HAS CONTACTED THE UTILITIES COMPANIES AND HAS MADE ARRANGEMENTS FOR BRACING OF POLES AS SHOWN ON THE DRAWINGS. IN THE EVENT THE CONTRACTOR'S WORK REQUIRES THE BRACING OF ADDITIONAL POLES, ANY COST INCURRED BY THE OWNER FOR THE BRACING OF ADDITIONAL POLES OR DAMAGES SHALL BE DEDUCTED FROM MONEY OWED THE CONTRACTOR. THE CONTRACTOR SHALL COORDINATE WITH THE UTILITY COMPANIES TO SCHEDULE THE BRACING OF THE POLES.
- FOR DETAILS NOT SHOWN ON THE DRAWINGS, AND FOR MATERIALS AND CONSTRUCTION METHODS, USE HOWARD COUNTY DESIGN MANUAL, VOLUME IV, STANDARD SPECIFICATIONS AND DETAILS FOR CONSTRUCTION. THE CONTRACTOR SHALL HAVE A COPY OF VOLUME IV ON THE JOB.
- WHERE TEST PITS HAVE BEEN MADE ON EXISTING UTILITIES, THEY ARE NOTED BY THE SYMBOL [ ] AT THE LOCATION OF THE TEST PIT. A NOTE OR NOTES CONTAINING THE RESULTS OF THE TEST PIT OR PITS IS INCLUDED ON THE DRAWINGS. EXISTING UTILITIES IN THE VICINITY OF THE PROPOSED WORK FOR WHICH TEST PITS HAVE NOT BEEN DUG SHALL BE LOCATED BY THE CONTRACTOR TWO WEEKS IN ADVANCE OF CONSTRUCTION OPERATIONS AT HIS OWN EXPENSE.
- CONTRACTOR SHALL NOTIFY THE FOLLOWING UTILITIES OR AGENCIES AT LEAST FIVE WORKING DAYS BEFORE STARTING WORK SHOWN ON THESE PLANS:  
 C&P TELEPHONE 1-800-257-7777  
 STATE HIGHWAY ADMINISTRATION - 531-5533  
 BALTIMORE GAS & ELECTRIC CO. - CONTRACTOR SERVICES 850-4620  
 BALTIMORE GAS & ELECTRIC CO. UNDER GROUND DAMAGE CONTROL - 850-0004  
 BALTIMORE GAS & ELECTRIC CO. TROUBLE SHOOTING - 298-0001  
 MISS UTILITY - 1-550-0100  
 COLONIAL PIPELINE CO. - 795-1390  
 BUREAU OF UTILITIES, HOWARD COUNTY DEPARTMENT OF PUBLIC WORKS - 992-2366
- TREES AND SHRUBS ARE TO BE PROTECTED FROM DAMAGE TO MAXIMUM EXTENT. TREES AND SHRUBS LOCATED WITHIN THE CONSTRUCTION STRIP ARE NOT TO BE REMOVED OR DAMAGED BY THE CONTRACTOR.
- CONTRACTOR SHALL REMOVE TREES, STUMPS AND ROOTS ALONG LINE OF EXCAVATION. PAYMENT FOR SUCH REMOVAL SHALL BE INCLUDED IN THE UNIT PRICE BID FOR CONSTRUCTION OF THE MAIN.
- ALL WATER MAINS TO BE D.I.P. UNLESS OTHERWISE NOTED.
- TOPS OF ALL WATER MAINS TO HAVE A MINIMUM OF 3'-1" COVER UNLESS OTHERWISE NOTED.
- VALVES ADJACENT TO TEES SHALL BE STRAPPED TO TEES.
- ALL FITTINGS SHALL BE BUTTRESSED OR ANCHORED WITH CONCRETE IN ACCORDANCE WITH THE STANDARD DETAILS UNLESS OTHERWISE PROVIDED FOR ON THE DRAWINGS.
- FIRE HYDRANTS SHALL BE SET TO THE BURY LINE ELEVATIONS SHOWN ON THE DRAWINGS. ALL FIRE HYDRANTS SHALL BE STRAPPED AND BUTTRESSED WITH CONCRETE IN ACCORDANCE WITH STANDARD DETAILS. SOIL AROUND THE FIRE HYDRANT SHALL BE COMPACTED IN ACCORDANCE WITH SECTION 1003 AND 1008 OF THE STANDARD SPECIFICATIONS.
- THE CONTRACTOR SHALL NOT OPERATE ANY WATER MAIN VALVES ON THE EXISTING WATER SYSTEM.
- ALL SEWER MAINS SHALL BE C.S.P.X., R.C.S.P., V.C.P.X., A.C.P. CLASS 2400 OR P.V.C. UNLESS OTHERWISE NOTED.
- THE CONTRACTOR SHALL PROVIDE A JOINT IN ALL SEWER MAINS WITHIN 2'-0" OF EXTERIOR MANHOLE WALL.
- ALL MANHOLES SHALL BE 4'-0" INSIDE DIAMETER UNLESS OTHERWISE NOTED.
- MANHOLES SHOWN WITH 12" AND 16" WALLS ARE BRICK MANHOLES ONLY.
- MANHOLES DESIGNATED W.T. IN PLAN AND PROFILE SHALL HAVE WATERTIGHT FRAME AND COVERS, STANDARD DETAIL G. 5.52 WHERE WATERTIGHT MANHOLE FRAME AND COVER IS USED. SET TOP OF FRAME 1'-6" ABOVE FINISHED GRADE UNLESS OTHERWISE NOTED ON THE DRAWINGS.
- HOUSE(S) WITH THE SYMBOL "C.N.S." INDICATES THAT CELLAR CANNOT BE SERVED.
- ALL WATER CONNECTIONS SHALL BE SET FOR INSIDE METER SETTING.

QUANTITIES			
ITEM	QUANTITY	AS-BUILT	SUPPLIER
8" x 8" IV	1 Ea.	1 Ea.	A&P SUPPLIES INC.
8" Water	720 LF	731 LF	ATLANTIC PIPE CO.
6" Water	1400 LF	1400 LF	"
1 1/2" Blowoffs	3 Ea.	3 Ea.	A&P SUPPLIES INC.
8" Valves	1 Ea.	1 Ea.	"
6" Valves (EX-FHV)	4 Ea.	4 Ea.	"
1" W.H.C.	572 LF	610 LF	HINSHAW METALS
3/4" W.H.C.	680 LF	804 LF	"
Fire Hydrants	4 Ea.	4 Ea.	A&P SUPPLIES INC.
Manholes	16 TYP	16 Ea.	ATLANTIC PRECAST
8" Sewer	2659 LF	2641 LF	CHARLOTTE PIPE
6" S.H.C.	1260 LF	1580 LF	"
8" x 6" Saddles	3 Ea.	1 Ea.	FLD CONTROL INC.

DEPARTMENT OF PUBLIC WORKS  
 HOWARD COUNTY, MARYLAND

*Robert M. Benninger* 12-9-86  
 DIRECTOR OF PUBLIC WORKS DATE

*Michael J. Fisher* 12-9-86  
 CHIEF, BUREAU OF ENGINEERING DATE

*Michael J. Fisher* 12-9-86  
 CHIEF, BUREAU OF UTILITIES DATE

*Michael J. Fisher* 12-9-86  
 CHIEF, LAND DEVELOPMENT DIVISION DATE

TRACY, SCHULTE  
 & ASSOCIATES INC.  
 planning • architecture • engineering  
 8450 Baltimore National Pike Suite 34  
 Ellicott City, Maryland 21043

*Tracy Schulte*  
 PROFESSIONAL ENGINEER

DES: RJW			
DRN: CDT			
CHK: JKT			
DATE: 7-1-85	BY	NO.	REVISION

AS-BUILT G. WALLACE 5/20/87

PLAN OF  
 WATER AND SEWER MAINS

600' SCALE MAP NO. 42 BLOCK NO. 21

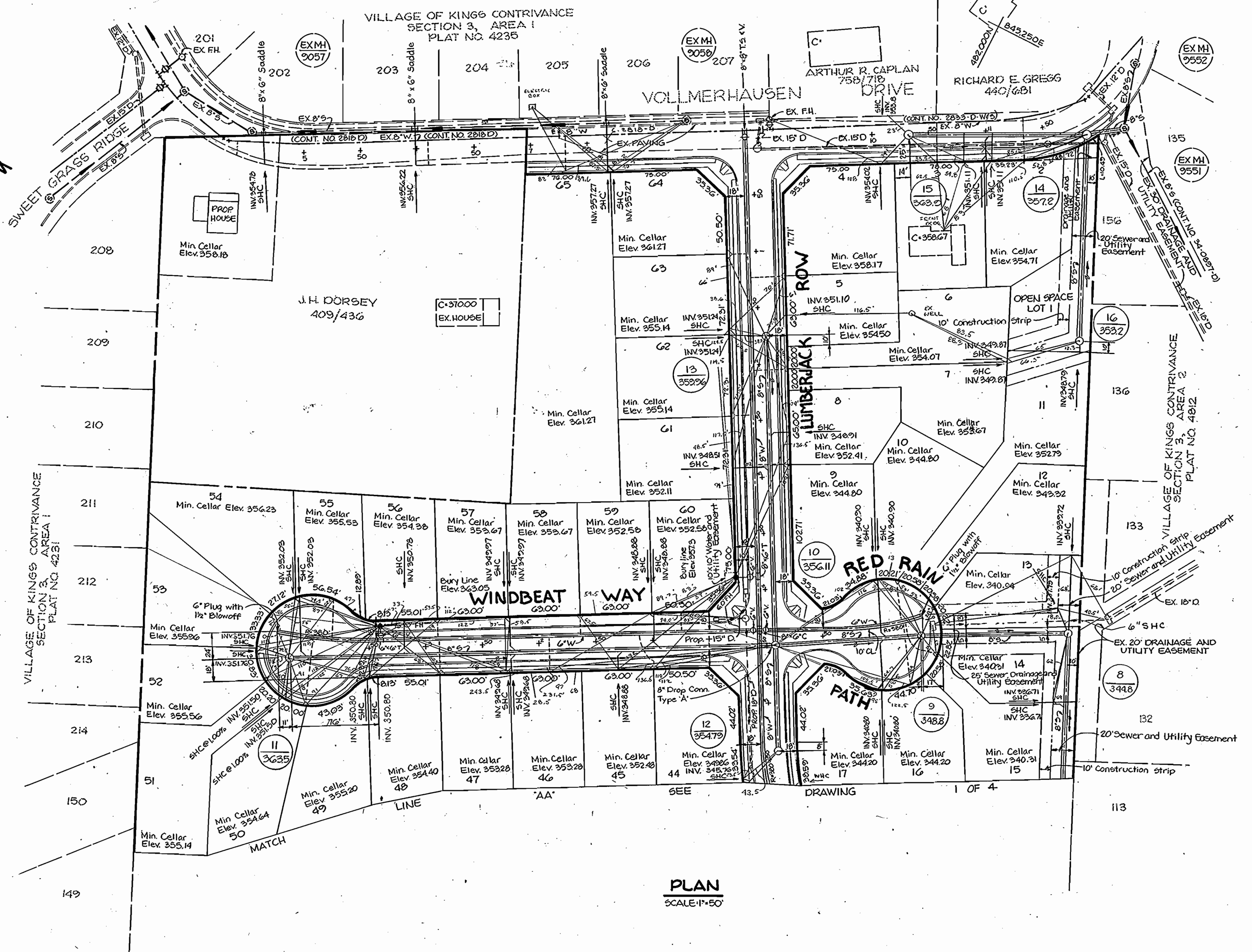
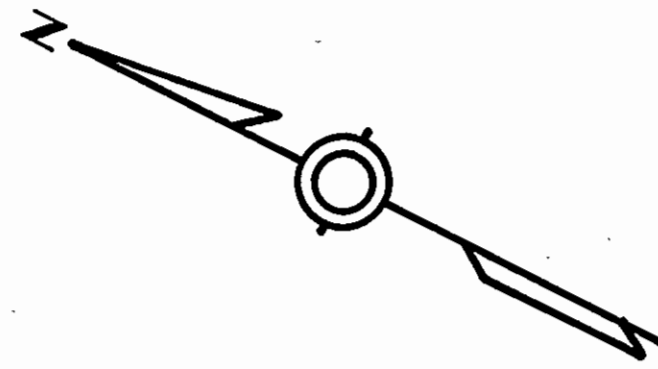
HUNTINGTON - SOUTH  
 SECTION I, AREA I  
 ELECTION DISTRICT NO. 6  
 CONTRACT NO. 34-1410-D

SCALE AS SHOWN

SHEET 1 OF 4

AS-BUILT G. WALLACE 5/20/87





**PLAN**  
SCALE: 1" = 50'

DRAWING 1 OF 4

DEPARTMENT OF PUBLIC WORKS  
HOWARD COUNTY, MARYLAND

*James Norman* 12-3-86  
DIRECTOR OF PUBLIC WORKS DATE

*Michael R. Reilly* 12-3-86  
CHIEF BUREAU OF ENGINEERING DATE

*Robert W. Bennett* 12-3-86  
CHIEF BUREAU OF UTILITIES DATE

*William J. Kelly* 12-3-86  
CHIEF, LAND DEVELOPMENT DIVISION DATE

TRACY, SCHULTE  
& ASSOCIATES INC.  
planning • architecture • engineering  
8450 Baltimore National Pike Suite 34  
Ellicott City, Maryland 21043



DES:	RJW			
DRN:	CDT			
CHK:	JKT			
DATE:	7-1-86			
BY:		NO.		REVISION

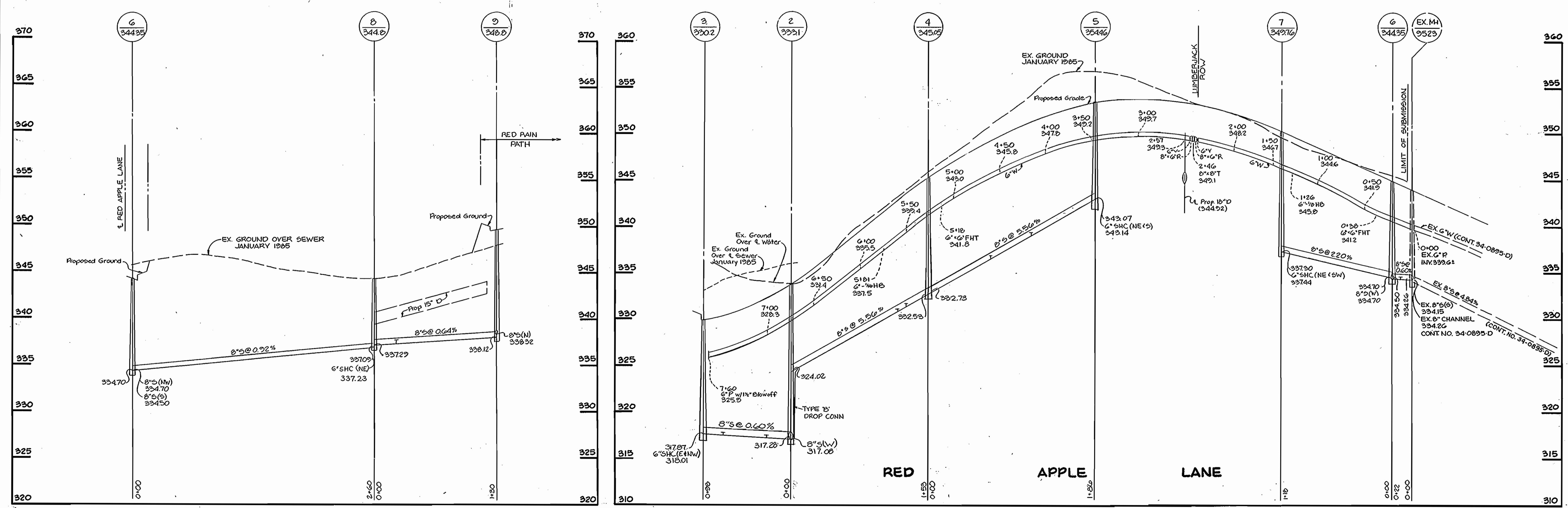
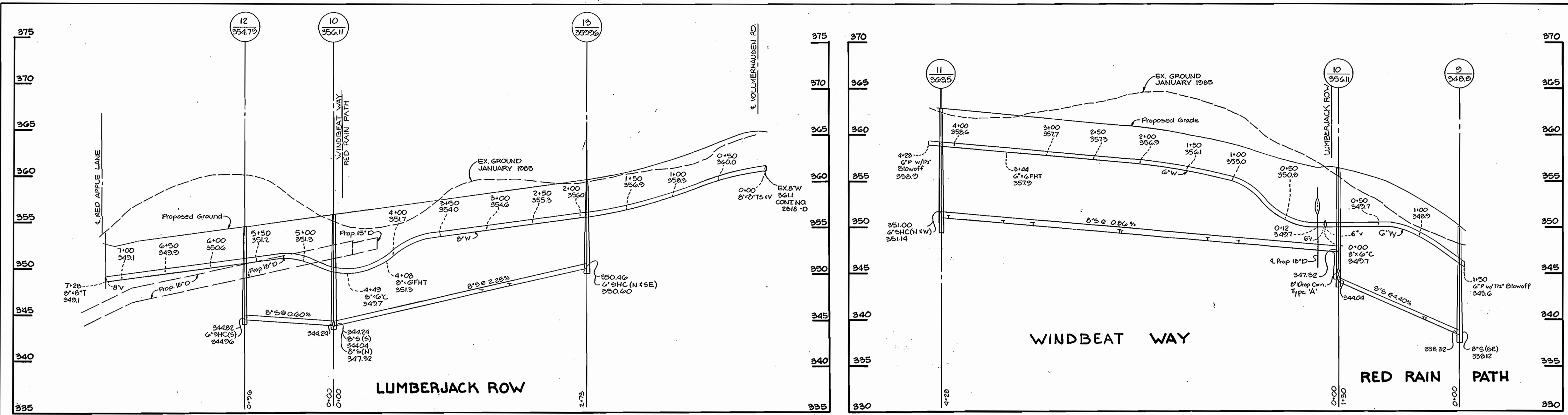
PLANS OF  
WATER AND SEWER MAINS

600' SCALE MAP NO. 42 BLOCK NO. 21

HUNTINGTON - SOUTH  
SECTION 1, AREA 1  
ELECTION DISTRICT NO. 6  
CONTRACT NO. 34-1410-D

SCALE AS SHOWN

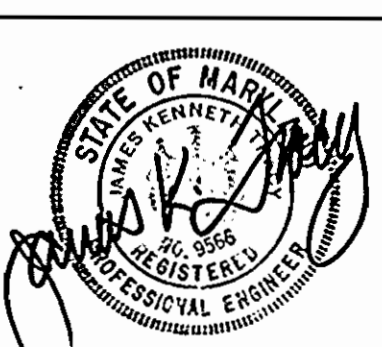
SHEET 2 OF 4



DEPARTMENT OF PUBLIC WORKS  
 HOWARD COUNTY, MARYLAND

Director of Public Works: *W. J. ...*  
 Chief, Bureau of Engineering: *...*  
 Chief, Bureau of Utilities: *...*  
 Chief, Land Development Division: *...*

TRACY, SCHULTE & ASSOCIATES INC.  
 planning • architecture • engineering  
 8450 Baltimore National Pike Suite 34  
 Ellicott City, Maryland 21043



DES: RJW	
DRN: CDT	
CHK: JKT	
DATE: 7-1-86	
S.L.S. 1	CORRECTED ELEVATIONS + PIPE SIZES
BY NO.	REVISION

PROFILES OF WATER AND SEWER MAINS

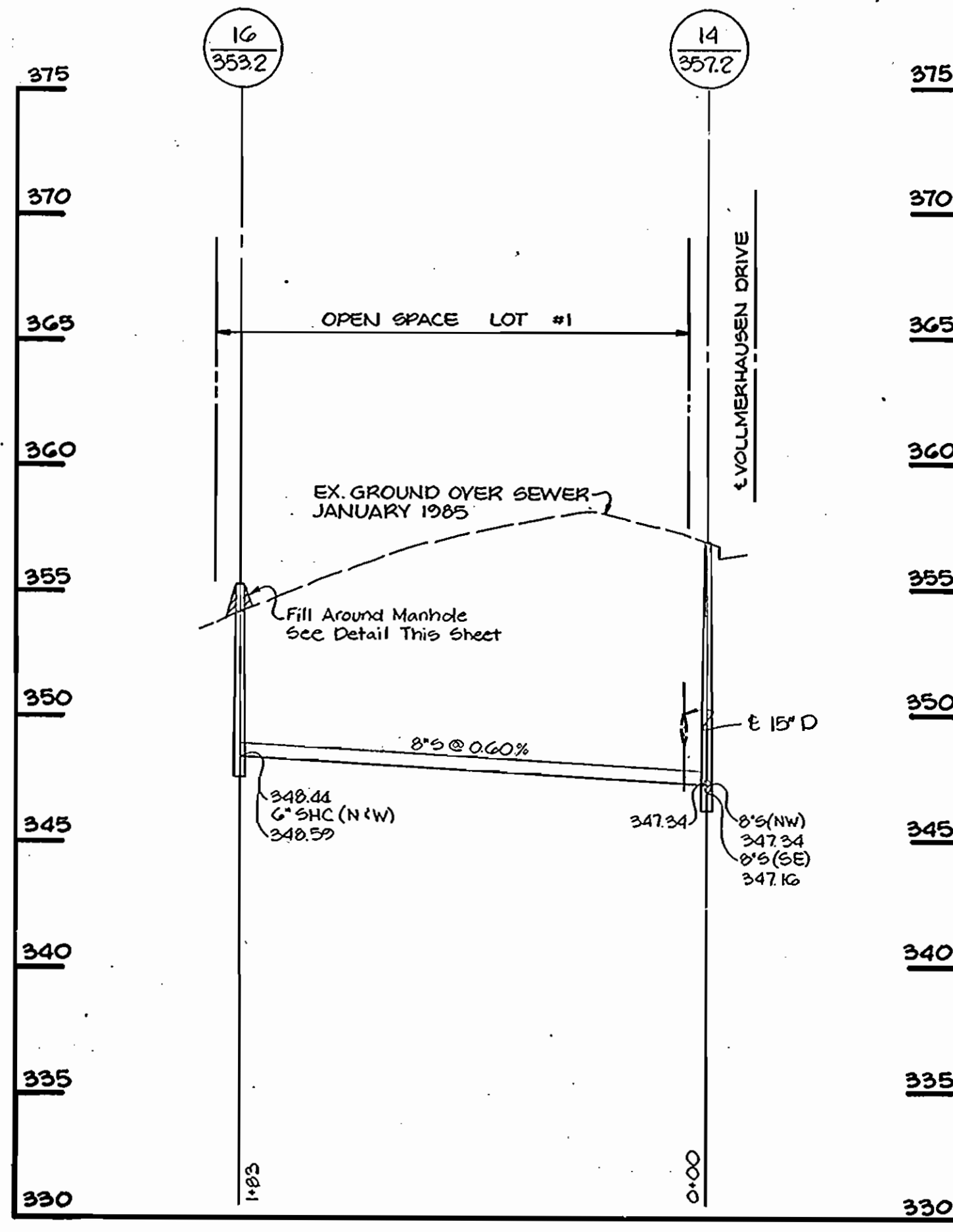
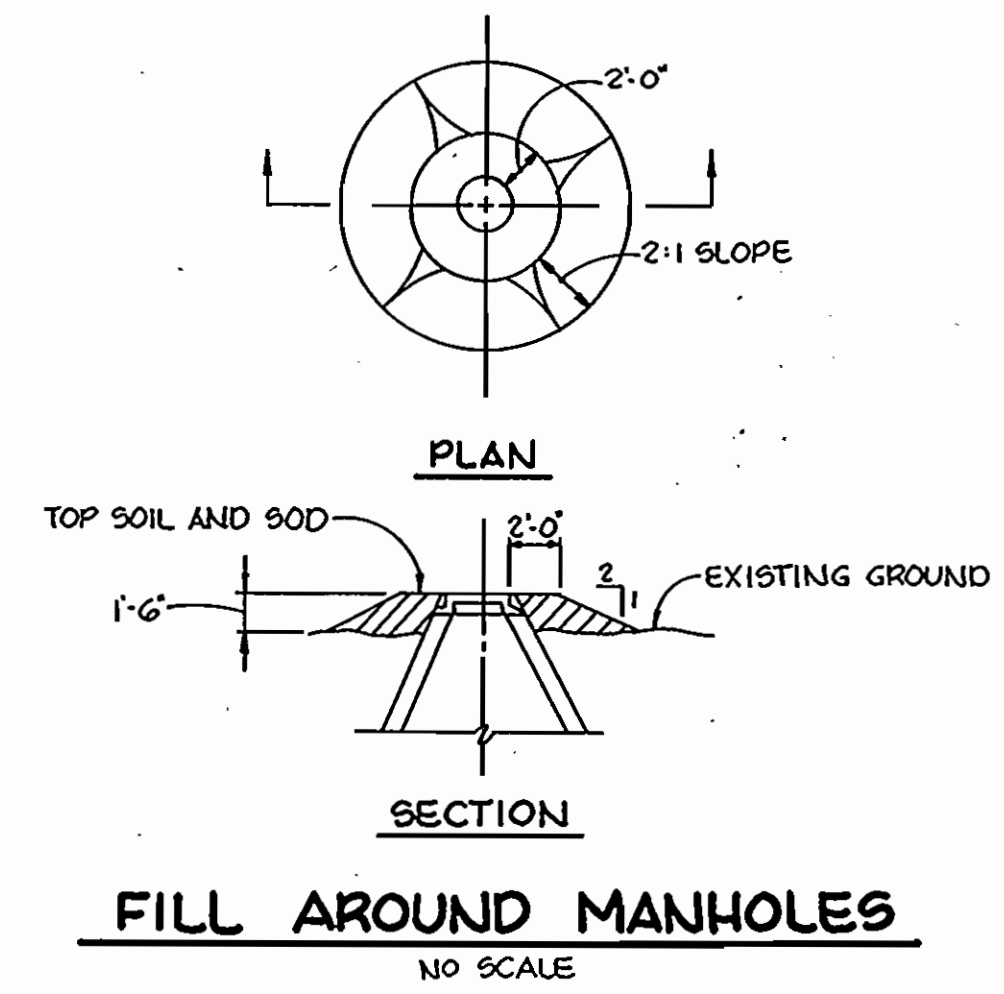
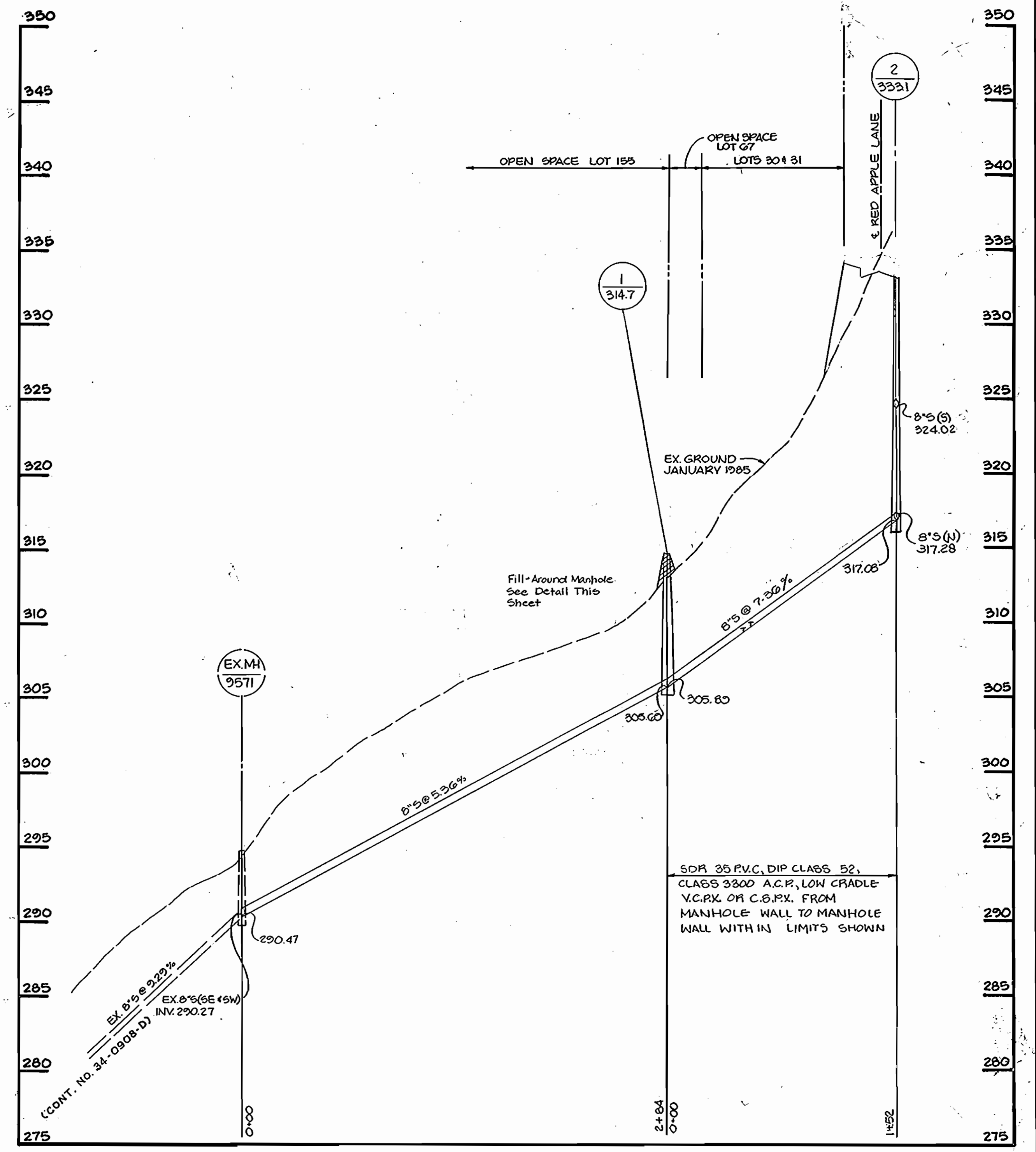
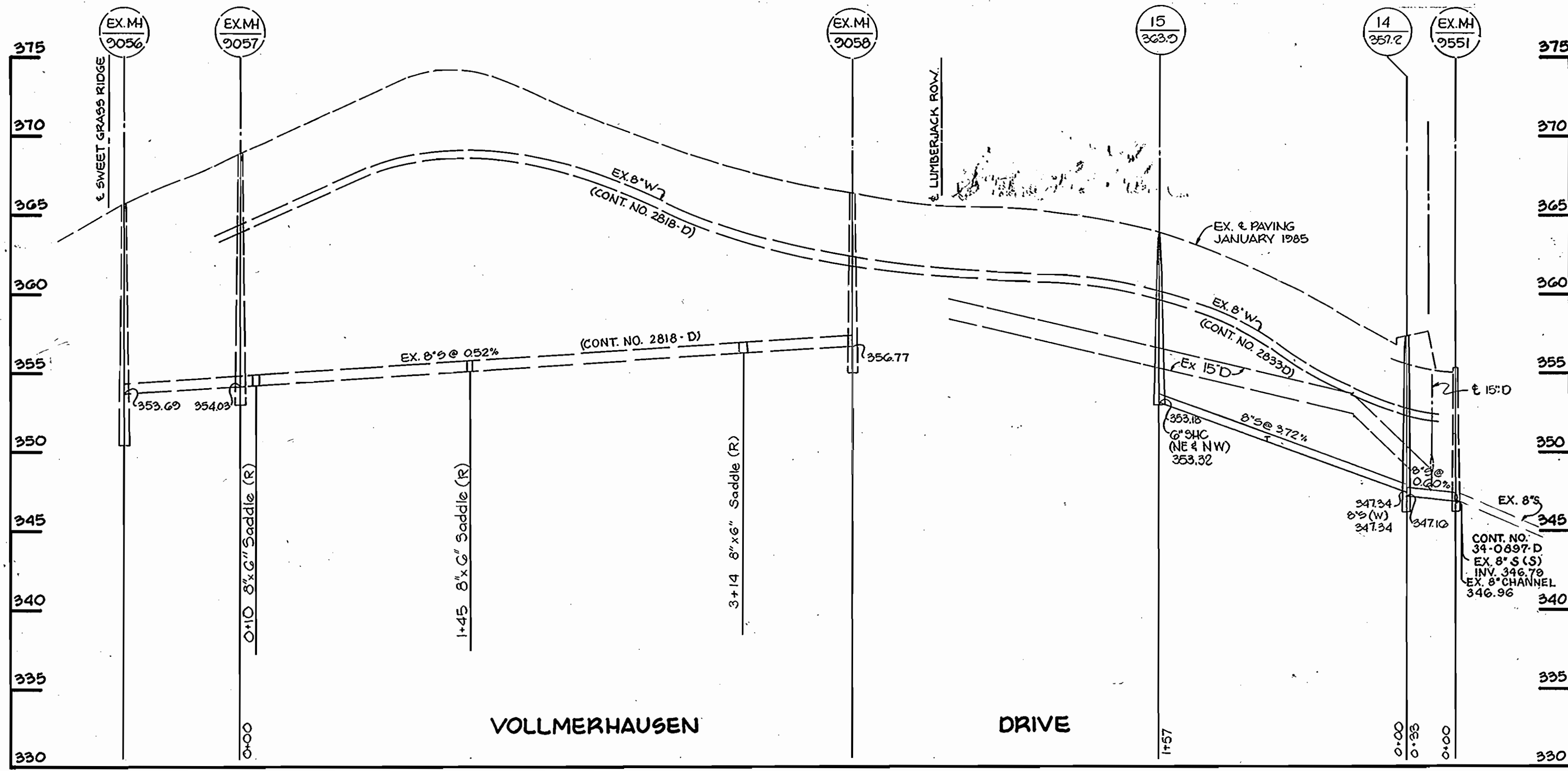
600' SCALE MAP NO. 42 BLOCK NO. 21

HUNTINGTON - SOUTH SECTION I, AREA I  
 ELECTION DISTRICT NO. 6  
 CONTRACT NO. 34-1410-D

SCALE  
 H: 1"=50'  
 V: 1"=5'

SHEET  
 3 OF 4





DEPARTMENT OF PUBLIC WORKS  
 HOWARD COUNTY, MARYLAND

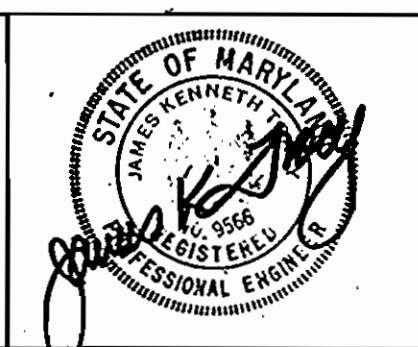
*Charles E. Norman* 12-7-86  
 DIRECTOR OF PUBLIC WORKS DATE

*William S. Riley* 12-2-86  
 CHIEF, BUREAU OF ENGINEERING DATE

*Robert D. ...* 12-2-86  
 CHIEF, BUREAU OF UTILITIES DATE

*William ...*  
 CHIEF, LAND DEVELOPMENT DIVISION DATE

TRACY, SCHULTE & ASSOCIATES INC.  
 planning · architecture · engineering  
 8450 Baltimore National Pike Suite 34  
 Ellicott City, Maryland 21043



DES: RJW			
DRN: CDT			
CHK: JKT			
DATE: 7-1-86			
BY	NO.	REVISION	DATE
		1 LOWERED ROAD + ADD NOTE	1/30/81

PROFILES OF SEWER MAINS

600' SCALE MAP NO. 42 BLOCK NO. 21

HUNTINGTON SOUTH  
 SECTION I, AREA I  
 ELECTION DISTRICT NO. 6  
 CONTRACT NO. 34-1410-D

SCALE  
 H: 1"=50'  
 V: 1"=5'

SHEET  
 4 OF 4