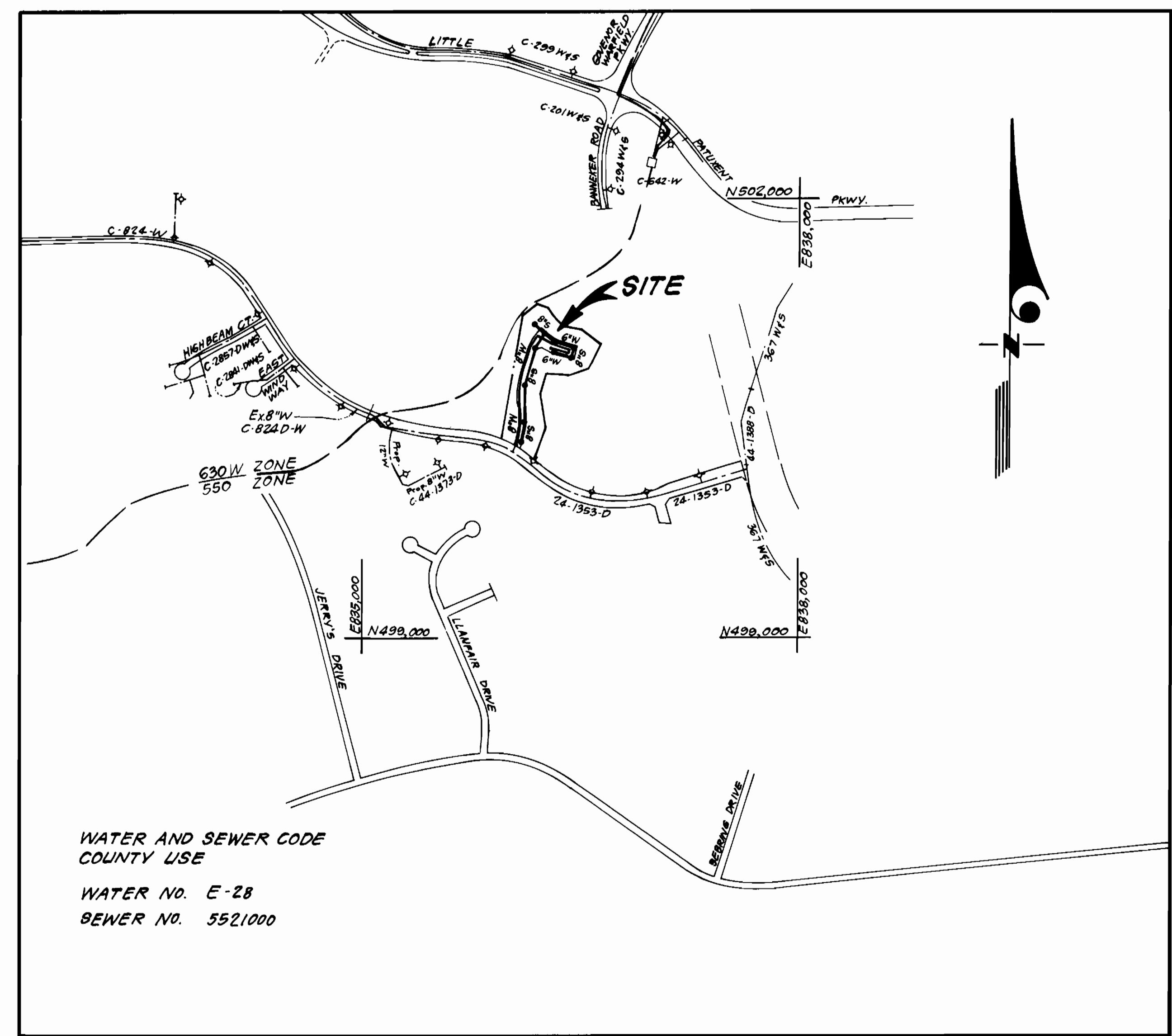


ELEVATIONS					
LOTS	SHC Inv @ R	Min. Cellar	LOTS	SHC Inv @ R	Min. Cellar
1	375.12	378.4	37/38	349.29	352.4
2/3	374.02	377.3	39	348.26	351.7
4/5	370.74	374.1	40	347.40	350.3
6/7	367.54	371.0	41	345.18	348.1
8	364.12	367.2	42	341.87	344.8
9/10	363.76	366.9	43/44	348.56	351.8
11/12	363.08	366.2	45/46	350.05	353.2
13/14	362.37	365.5	47/48	351.23	354.4
15	361.31	364.4	49/50	352.42	355.6
16/17	360.86	364.0	51/52	354.46	357.6
18/19	360.51	363.6	53/54	355.18	358.4
20/21	360.29	363.4	55/56	355.56	358.8
22/23	359.68	363.1	57/58	356.06	359.1
24/25	359.46	362.9	59/60	356.36	359.8
26	359.32	362.7	61/62	357.54	360.9
27/28	358.12	359.5	63/64	358.59	362.0
29/30	354.35	357.7	65	364.13	367.5
31/32	352.13	355.5	66/67	366.51	369.9
33	350.88	353.7	68/69	369.66	373.1
34/35	349.82	352.9	70/71	372.81	376.2
36	349.49	352.6			



WATER AND SEWER CODE
COUNTY USE
WATER NO. E-28
SEWER NO. 5521000

VICINITY MAP
SCALE: 1" = 600'

TYPE OF BUILDING	Townhouse
NUMBER OF UNITS	71
NUMBER OF SHC's	71
NUMBER OF WHC's	71
DRAINAGE AREA	Little Patuxent

GENERAL NOTES

- Approximate location of existing mains are shown. The contractor shall take all necessary precautions to protect existing mains and services and maintain uninterrupted supply. Any damage incurred shall be repaired immediately to the satisfaction of the Inspector, at the contractor's expense.
- All horizontal controls are based on Maryland State Coordinates.
- All vertical controls are based on U.S.G.S. Datum.
- All pipe elevations shown are invert elevations.
- Clear all utilities by a minimum of 6" clear all poles by 2'-0" minimum or tunnel as required. Any cost incurred to the contractor for tunneling or bracing at poles shall be included in unit prices bid for excavation and backfill.
- For details not shown on the drawings use Howard County Standard Details.
- For materials and construction methods use Howard County Standard Specifications & Mo. Co. Design Manual, Volume III. The contractor shall have a copy of Volume III on the job.
- Contractor shall locate existing utilities a minimum of two (2) weeks in advance of construction operations in the vicinity of proposed utilities at his own expense.
- Contractor shall notify the following utilities or agencies at least five (5) working days before starting work shown on these plans.
State Highway Administration - 531-5533
Baltimore Gas & Electric Company - Contractor Services - 561-2585
Baltimore Gas & Electric Company - Under-ground Damage Control - 234-5621
Baltimore Gas & Electric Company - Trouble Shooting - 298-9013
"Miss Utility" - 1-559-0100
Chesapeake & Potomac (C & P) Telephone Company - 725-9976
Colonial Pipeline Company - 795-1390
Bureau of Utilities Howard County - 992-2366
- Trees are to be protected from damage to maximum extent. Trees located within the construction strip are not to be removed or damaged by the contractor.
- Contractor shall remove trees, stumps, and roots along line of excavation as directed by the Inspector. Payment for such removal shall be included in the unit price bid for excavation and backfill.
- Place regulation "Men Working" and warning signs as required to comply with Maryland State Highway Administration Manual of Traffic Control for Highway Construction and Maintenance Operations.
- All water mains to be D.I.P. unless otherwise noted.
- Top of all water mains to have a minimum of 3'-1/2' cover unless otherwise noted.
- Valves adjacent to tees shall be strapped to tees.
- Block all fittings with concrete.
- Bury line elevations on fire hydrants shall be set to the elevations shown on the drawings. All fire hydrants shall be strapped and buttressed with concrete in accordance with standard details. Soil around the fire hydrant to be compacted in accordance with Sections 1003 & 1008 of the Standard Specifications.
- All water house connections shall be for an inside meter setting.
- The contractor shall not operate any water main valves on the existing system.
- All sewer mains shall be C.S.P.X., V.C.P.X., P.V.C., or A.C.P. Class 2400 unless otherwise noted.
- The contractor shall provide a joint in all sewer mains within 2'-0" of exterior manhole wall.
- All manholes shall be 4'-0" inside diameter, unless otherwise noted.
- Water main and water house connection lines must have a minimum of one foot separation from the sanitary sewer and sewer house connections as they cross. Except at crossings, water and sewer lines shall have a minimum horizontal separation of 10'.
- For all Copper Water House Connections, utilize flared type fittings only.
- Curb stops shall be installed 4'-2" below proposed grade.

CONTRACT NO. 24-1408 - D
VILLAGE OF HICKORY RIDGE
SECTION 5 AREA 2, PARCEL "B"
HOWARD COUNTY, MARYLAND
DEPARTMENT OF PUBLIC WORKS

QUANTITIES			
ITEM	ESTM'D	AS-BUILT	MATERIAL / SUPPLIER
8" S	1495 L.F.	1495'	PVC SPR 35 ASTM D 3025
8" W	801 L.F.	801'	USCENT DUCTILE IRON PIPE NNSI
6" W	469 L.F.	489'	TYTON D.F.P. CLASS 52
4" Dia. MH	12 EA.	12	1012-A DRC UTILITIES SUPPLY INC.
F.H.	2 EA.	2	AWWA C 502 US-PIPE & FOUNDRY
6" V (excl. FHV)	1 EA.	1	AWWA GATE VALVE US PIPE & FOUNDRY
1/2" Drain	2 EA.	2	CHRIS MINDY
6" SHC	1101 L.F.	1101'	PVC SPR 35 ASTM D 3025 NATIONAL PIPE
2" WHC	126 L.F.	126'	ASTM SOFT COPPER WATER SUPPLY INC.
1" WHC	674 L.F.	677'	"
3/4" WHC	1039 L.F.	1041'	"

Sediment Control Measures will be implemented in accordance with Article No. 15 of the Specifications & with Road Construction Plan F-86-39, Drawings 344 Sediment & Erosion Control.

REVIEWED FOR HOWARD SOIL CONSERVATION DISTRICT AND MEETS TECHNICAL REQUIREMENT
John H. Stelm 10/18/85
SIGNATURE DATE
U.S. SOIL CONSERVATION SERVICE

This Development Plan is approved for Soil Erosion and Sediment Control by the Howard Soil Conservation District.

APPROVED:
Stephen L. Huber 10/18/85
HOWARD S.C.D. DATE

DEPARTMENT OF PUBLIC WORKS
HOWARD COUNTY, MARYLAND

Wm. F. Nunn 10-26-85
DIRECTOR OF PUBLIC WORKS DATE

John H. Stelm 10-22-85
CHIEF, BUREAU OF UTILITIES DATE

John H. Stelm 10-18-85
CHIEF, BUREAU OF ENGINEERING DATE

John H. Stelm 10-18-85
CHIEF, LAND DEVELOPMENT DIV. DATE

CFE CLARK-FINEFROCK & SACKETT
ENGINEERS-PLANNERS-SURVEYORS
11315 LOCKWOOD DRIVE SILVER SPRING, MARYLAND 20904
(301) 593-3400



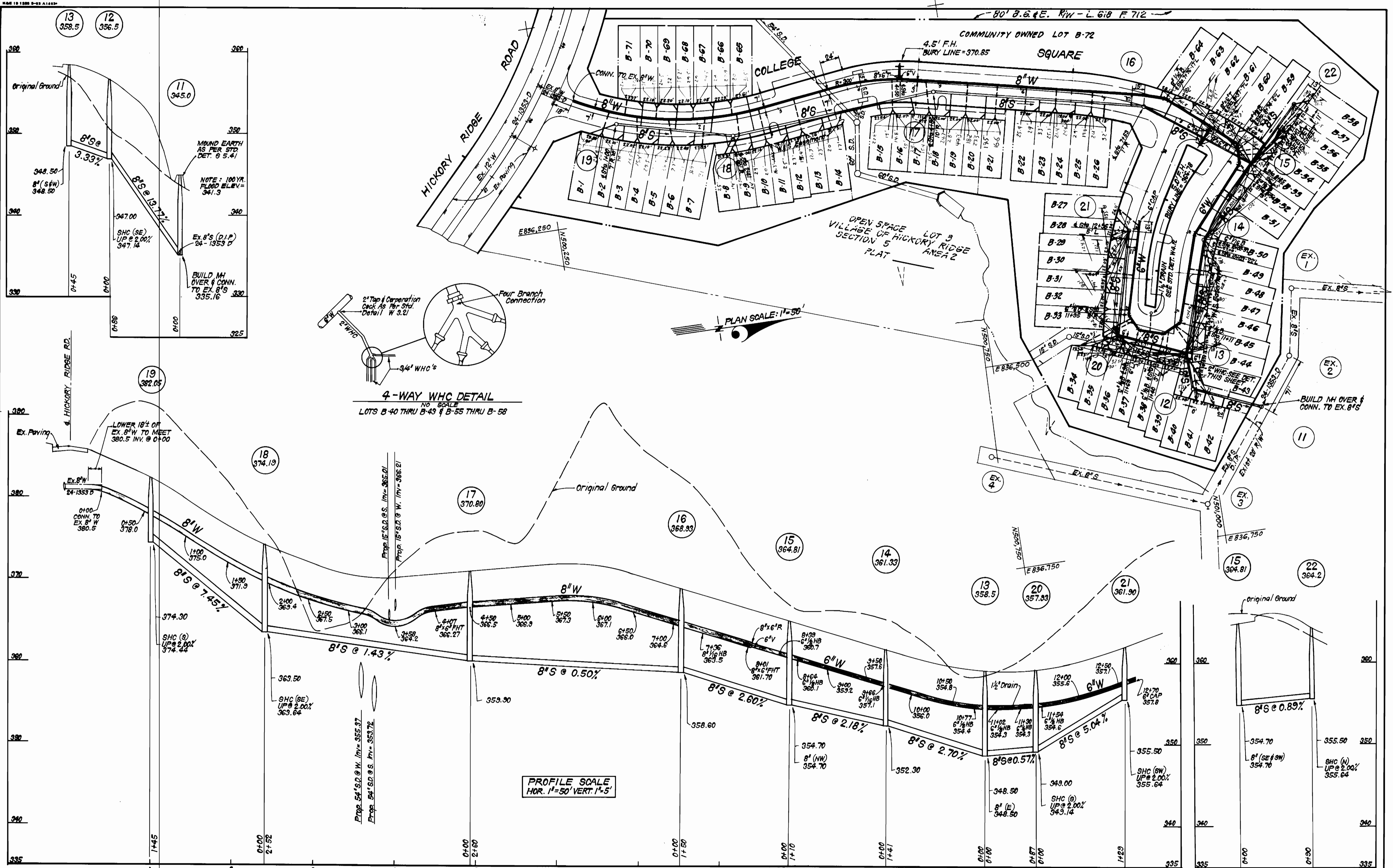
DES: C.K.G.					
DRN: V.L.M.					
CHK: C.K.G.					
DATE: 8/85					
BY NO.		REVISION		DATE	

COLUMBIA, VILLAGE OF HICKORY RIDGE
PARCEL B, SECTION 5 AREA 2
LOTS B-1 THRU B-73
5TH ELECTION DISTRICT
CONTRACT NO. 24-1408-D

SCALE AS SHOWN

SHEET 1 OF 2

AS-BUILT 6-30-86



DEPARTMENT OF PUBLIC WORKS
 HOWARD COUNTY, MARYLAND
 Director of Public Works: *Mark F. Nunn* 10-24-85
 Chief, Bureau of Engineering: *Aracelis B. Rodriguez* 10-22-85
 Chief, Bureau of Utilities: *John J. ...* 10-22-85

CLARK · FINEPROCK & SACKETT
 ENGINEERS · PLANNERS · SURVEYORS
 11735 LOCKWOOD DRIVE SILVER SPRING, MARYLAND 20904
 (301) 593-3400



DES: C.K.G.	DATE: 8/85
DRN: V.L.M.	BY: NO.
CHK: C.K.G.	REVISION
DATE: 8/85	DATE

PLAN & PROFILES OF
 WATER & SEWER MAINS
 600' SCALE MAP NO. 23-136 BLOCK NO.

COLUMBIA, VILLAGE OF HICKORY RIDGE
 PARCEL B, SECTION 5 AREA 2
 LOTS B-1 THRU B-73
 5TH ELECTION DISTRICT
 CONTRACT NO. 24-1408-D

SCALE AS SHOWN
 SHEET 2 OF 2

