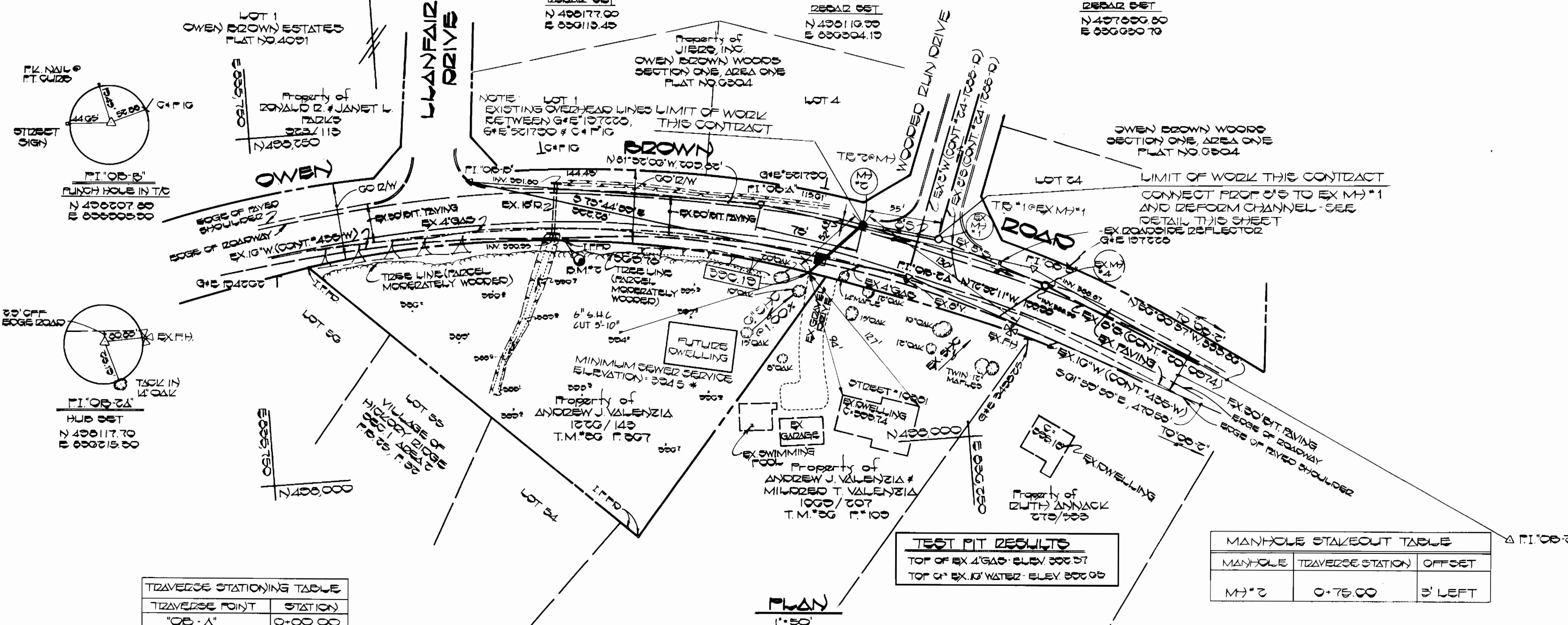


BENCH MARKS

B.M.#1 ELEV. 300.37
 1/2" OFFICE IN G#E POLE # 254700
 NORTH SIDE OWEN BROWN RD., 450'
 SOUTHEAST OF P.I. '08-0'

B.M.#2 ELEV. 300.12
 I.P. FOUND - SOUTH SIDE OWEN
 BROWN RD., 20' SOUTHEAST OF
 P.I. '08-0'



TEST PIT RESULTS

TOP OF EX. 4" GAS - ELEV. 300.37
 TOP OF EX. 10" WATER - ELEV. 300.00

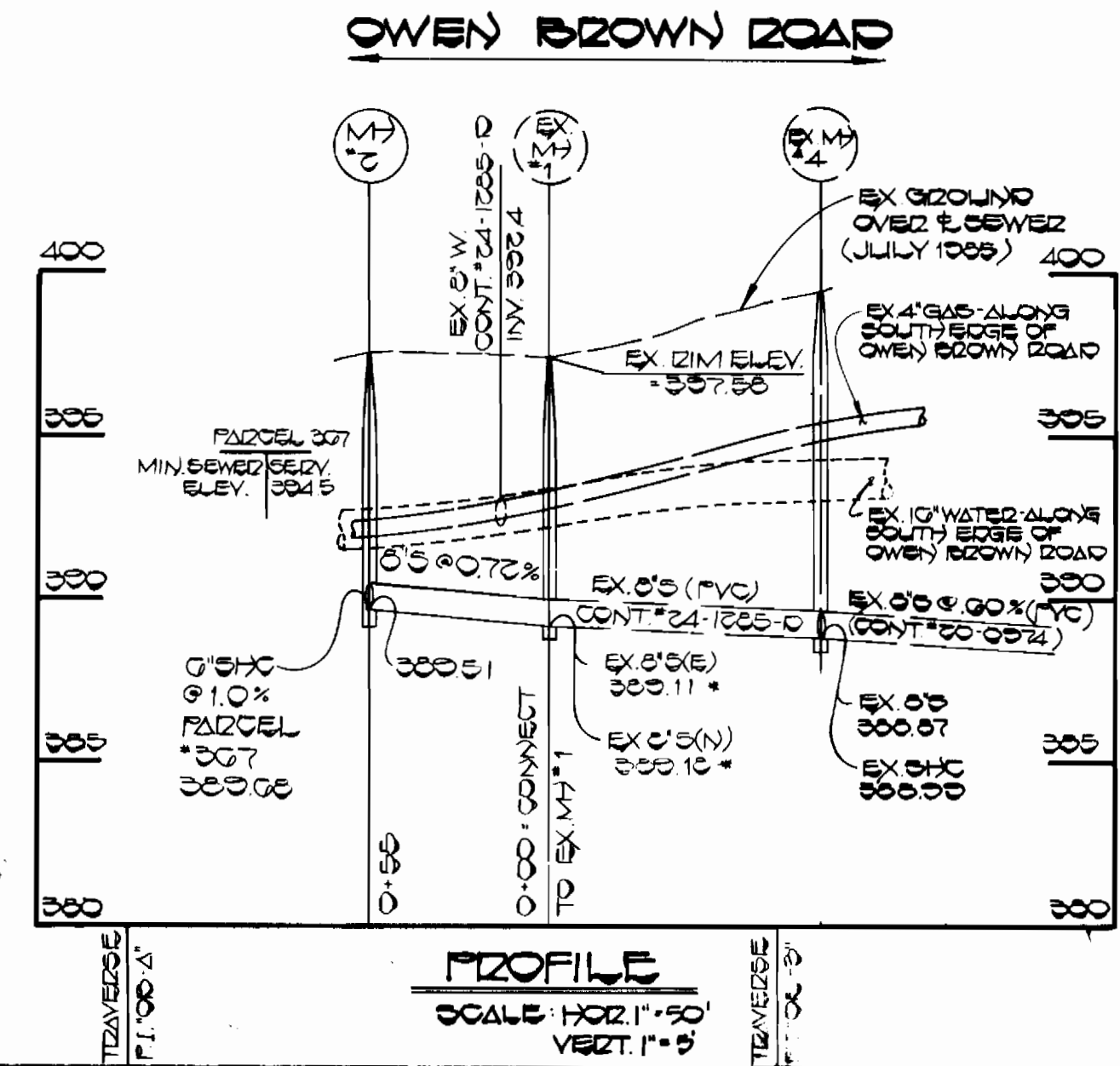
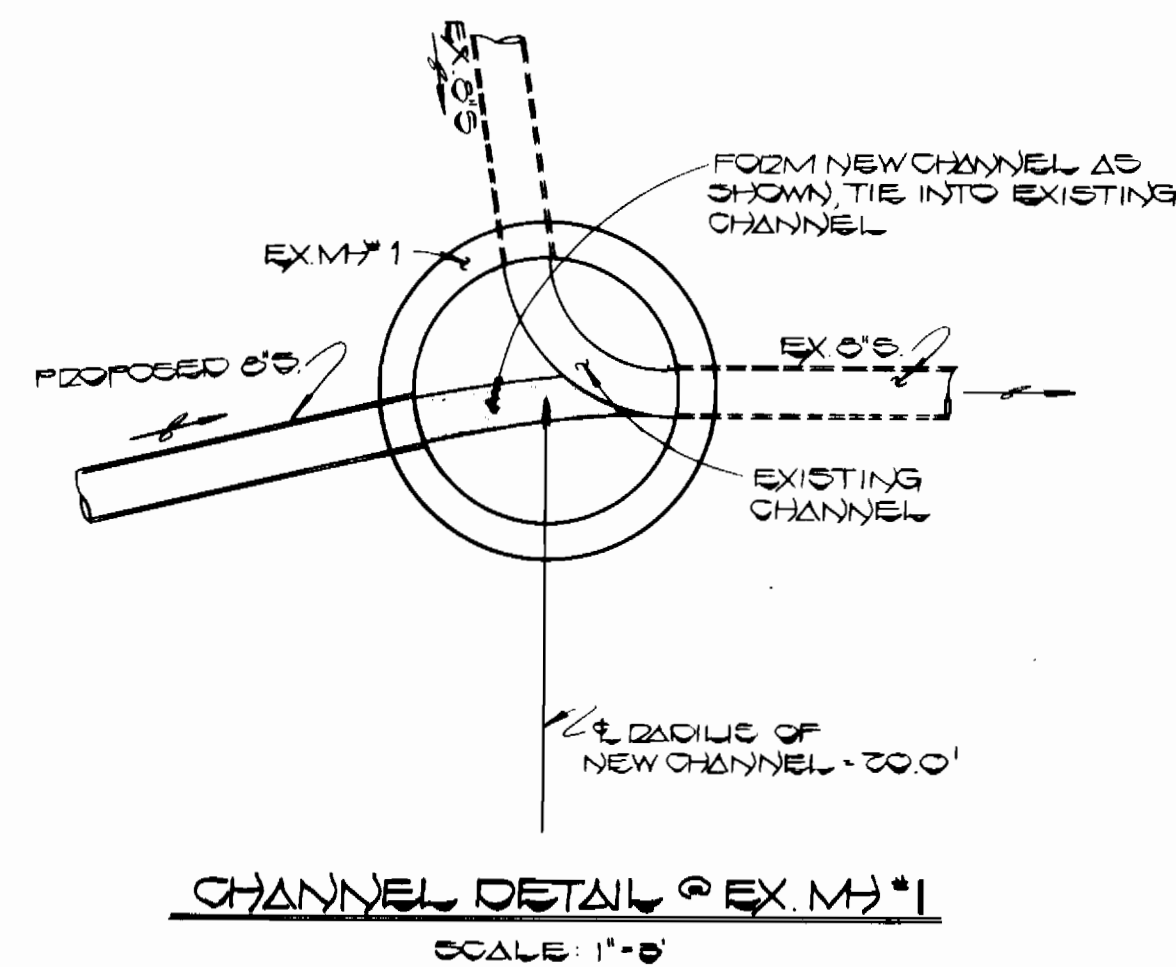
MANHOLE STAKEOUT TABLE

MANHOLE	TRAVELER STATION	OFFSET
M#2	0+75.00	3' LEFT

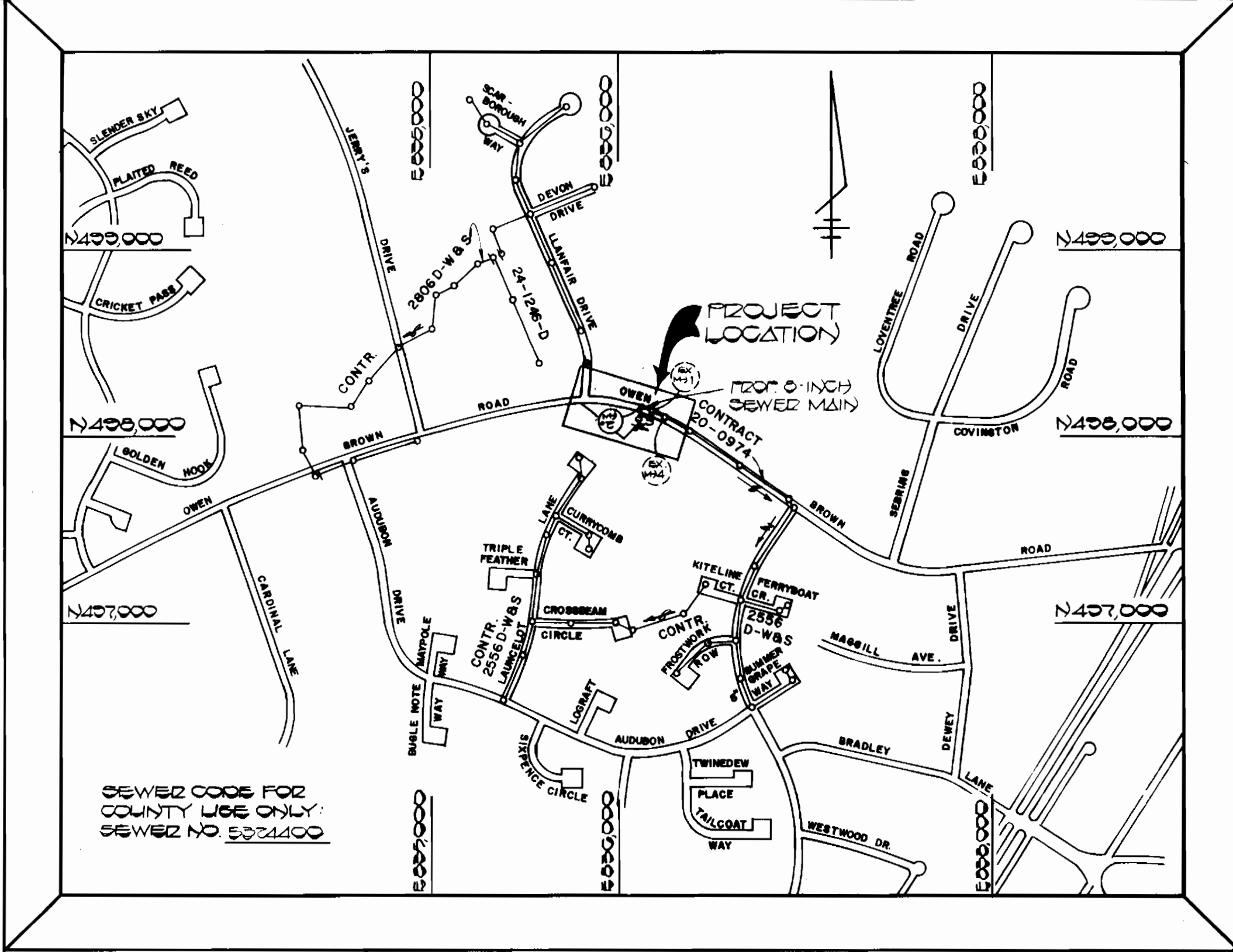
TRAVELER STATIONING TABLE

TRAVELER POINT	STATION
'08-0'	0+00.00
'08-1'	1+99.33
'08-2'	5+98.64

* NOTE
 THE MINIMUM SEWER SERVICE ELEVATION INDICATED IN PLAN IS PREDICATED UPON THE FUTURE DWELLING ON THE PARCEL BEING CONSTRUCTED IN APPROXIMATELY THE LOCATION SHOWN



* EXISTING AS-BUILT INVERT ELEVATIONS AT M#1 PROVIDED BY HOWARD COUNTY



VICINITY MAP

SCALE: 1" = 600'

GENERAL NOTES

- APPROXIMATE LOCATION OF EXISTING MAINS ARE SHOWN. THE CONTRACTOR SHALL TAKE ALL NECESSARY PRECAUTIONS TO PROTECT EXISTING MAINS AND SERVICES AND MAINTAIN UNINTERRUPTED SUPPLY. ANY DAMAGE INCURRED SHALL BE REPAIRED IMMEDIATELY TO THE SATISFACTION OF THE ENGINEER AT THE CONTRACTOR'S EXPENSE.
- ALL HORIZONTAL CONTROLS ARE BASED ON MARYLAND STATE COORDINATES.
- ALL VERTICAL CONTROLS ARE BASED ON U.S.G.S. DATA.
- ALL PIPE ELEVATIONS SHOWN ARE INVERT ELEVATIONS.
- CLEAR ALL UTILITIES BY A MINIMUM OF 6".
- FOR DETAILS NOT SHOWN ON THE DRAWINGS, AND FOR MATERIALS AND CONSTRUCTION METHODS, USE HOWARD COUNTY DESIGN MANUAL, VOLUME IV, STANDARD SPECIFICATIONS AND DETAILS FOR CONSTRUCTION. THE CONTRACTOR SHALL HAVE A COPY OF VOLUME IV ON THE JOB.
- WHERE TEST PITS HAVE BEEN MADE ON EXISTING UTILITIES, THEY ARE NOTED BY THE SYMBOL [] AT THE LOCATION OF THE TEST PIT. A NOTE OR NOTES CONTAINING THE RESULTS OF THE TEST PIT OR PITS IS INCLUDED ON THE DRAWINGS. EXISTING UTILITIES IN THE VICINITY OF THE PROPOSED WORK FOR WHICH TEST PITS HAVE NOT BEEN DUG SHALL BE VERIFIED BY THE CONTRACTOR TO HIS OWN SATISFACTION. ANY DAMAGE TO EXISTING FACILITIES DUE TO THE CONTRACTOR'S NEGLIGENCE SHALL BE REPAIRED AT THE CONTRACTOR'S EXPENSE.
- CONTRACTOR SHALL NOTIFY THE FOLLOWING UTILITIES OR AGENCIES AT LEAST FIVE WORKING DAYS BEFORE STARTING WORK SHOWN ON THESE PLANS:
 - STATE HIGHWAY ADMINISTRATION - 531-5533
 - BALTIMORE GAS & ELECTRIC CO. - CONTRACTOR SERVICES 561-2585
 - BALTIMORE GAS & ELECTRIC CO. - UNDER GROUND DAMAGE CONTROL - 234-5621
 - BALTIMORE GAS & ELECTRIC CO. - TROUBLE SHOOTING - 298-9013
 - MISS UTILITY - 1-559-0100
 - COLONIAL PIPELINE CO. - 795-1390
 - BUREAU OF UTILITIES, HOWARD COUNTY DEPARTMENT OF PUBLIC WORKS - 992-2366
- TREES AND SHRUBS ARE TO BE PROTECTED FROM DAMAGE TO MAXIMUM EXTENT. TREES AND SHRUBS LOCATED WITHIN THE CONSTRUCTION STRIP ARE NOT TO BE REMOVED OR DAMAGED BY THE CONTRACTOR.
- CONTRACTOR SHALL REMOVE TREES, STUMPS AND ROOTS ALONG THE LINE OF EXCAVATION. PAYMENT FOR SUCH REMOVAL SHALL BE INCLUDED IN THE UNIT PRICE BID FOR CONSTRUCTION OF THE MAIN.
- ALL SEWER MAINS SHALL BE C.S.P., R.C.S.P., V.C.P.X., A.C.P. CLASS 2400 OR PVC UNLESS OTHERWISE NOTED.
- THE CONTRACTOR SHALL PROVIDE A JOINT IN ALL SEWER MAINS WITHIN 2'-0" OF EXTERIOR MANHOLE WALL.
- ALL MANHOLES SHALL BE 4'-0" INSIDE DIAMETER UNLESS OTHERWISE NOTED.
- T.B. DENOTES TEST BORING.
- MANHOLES SHOWN WITH 12" AND 16" WALLS ARE FOR BRICK MANHOLES ONLY.
- MANHOLES DESIGNATED W.T. IN PLAN AND PROFILE SHALL HAVE WATERTIGHT FRAME AND COVERS, STANDARD DETAIL G.5.52 WHERE WATERTIGHT MANHOLE FRAME AND COVER IS USED, SET TOP OF FRAME 1'-6" ABOVE FINISHED GRADE UNLESS OTHERWISE NOTED ON THE DRAWINGS.
- HOUSE(S) WITH THE SYMBOL "C.N.S." INDICATES THAT THE CELLAR CANNOT BE SERVED.

QUANTITIES

ITEM	EST'D	AS-BUILT	SUPPLIED
8" SEWER	55 LF	55 PVC	AP SUPPLY
12" SEWER	51 LF	51 PVC	AP SUPPLY
MANHOLES	1 EA.	1	ATLANTIC

SEDIMENT CONTROL MEASURES FOR THIS CONTRACT WILL BE IMPLEMENTED IN ACCORDANCE WITH DIVISION III VOLUME IV OF THE HOWARD COUNTY DESIGN MANUAL AND THE STANDARDS AND SPECIFICATIONS FOR SOIL EROSION AND SEDIMENT CONTROL. THIS PLAN IS APPROVED FOR EROSION AND SEDIMENT CONTROL BY THE HOWARD SOIL CONSERVATION DISTRICT.

REVIEWED FOR HOWARD COUNTY SOIL CONSERVATION DISTRICT AND MEETS TECHNICAL REQUIREMENTS.

John M. Klein 11-18-85
 U.S. SOIL CONSERVATION SERVICE DATE

Stephen J. Fisher 11/18/85
 HOWARD SOIL CONSERVATION DISTRICT. DATE

DEPARTMENT OF PUBLIC WORKS
 HOWARD COUNTY, MARYLAND

DIRECTOR OF PUBLIC WORKS DATE
Robert M. Bringer 11-21-85
 CHIEF, BUREAU OF UTILITIES DATE

CHIEF, BUREAU OF ENGINEERING DATE
Charles M. ... 11/19/85
 CHIEF, UTILITY/DESIGN DIVISION DATE

FISHER, COLLINS, AND CARTER, INC.
 CONSULTING ENGINEERS AND LAND SURVEYORS
 8398 COURT AVENUE
 ELLICOTT CITY, MARYLAND 21043

STATE OF MARYLAND
 REGISTERED PROFESSIONAL ENGINEER
 TERRELL A. FISHER, DATE

DES: D.B.S.	BY NO.	REVISION	DATE
DRN: D.B.S.			
CHK: P.W.K.			
DATE: 0-00-85			

SEWER MAIN EXTENSION - PLAN & PROFILE

600' SCALE MAP NO. 20 BLOCK NO.

OWEN BROWN ROAD SEWER MAIN EXTENSION
 CAPITAL PROJECT NO. S-6685
 CONTRACT NO. 20-1400
 FIFTH ELECTION DISTRICT
 HOWARD COUNTY, MARYLAND

SCALE AS SHOWN
 SHEET 1 OF 1