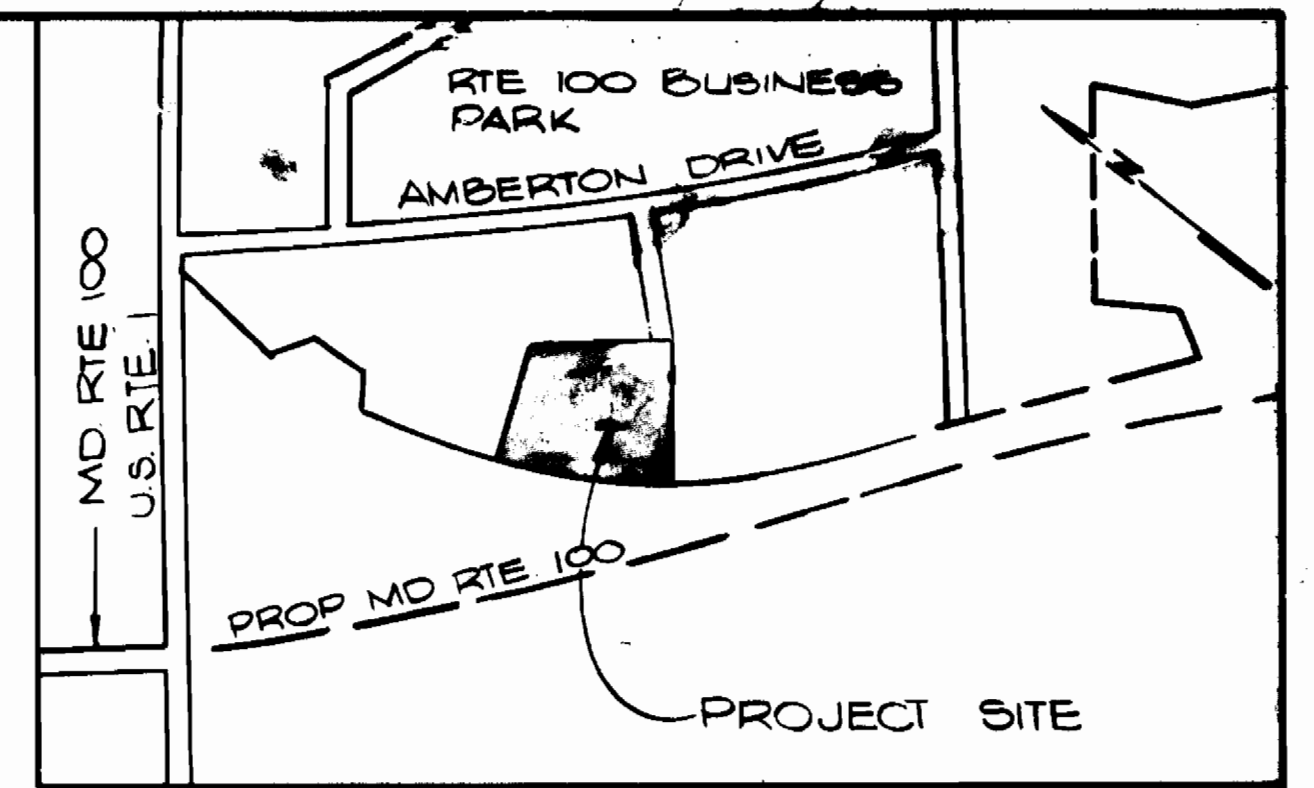


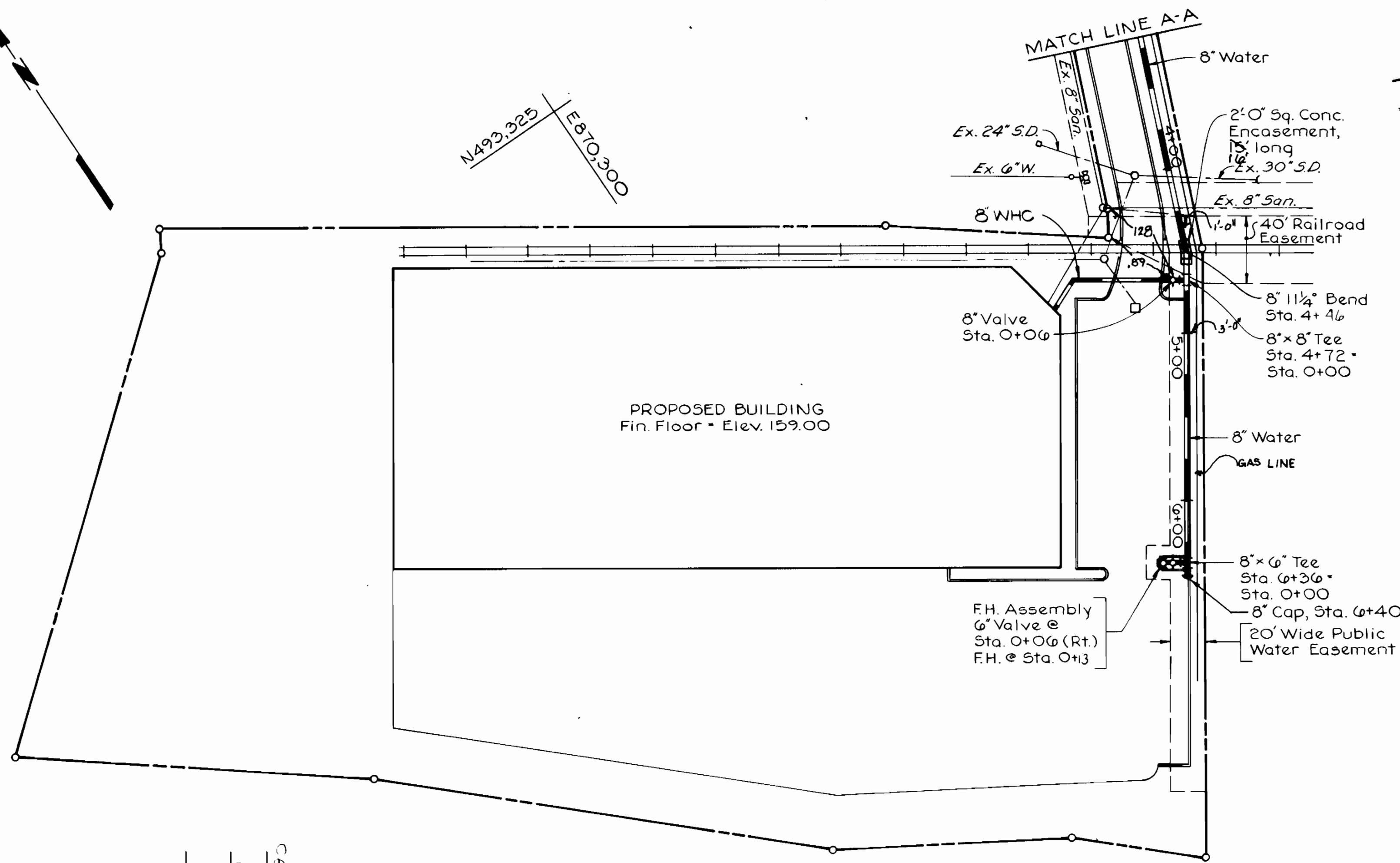
Drainage Area: 4.79 Acres
 WHC: 1
 SHC: 1
 Water Code: E-06
 Sewer Code: 215125



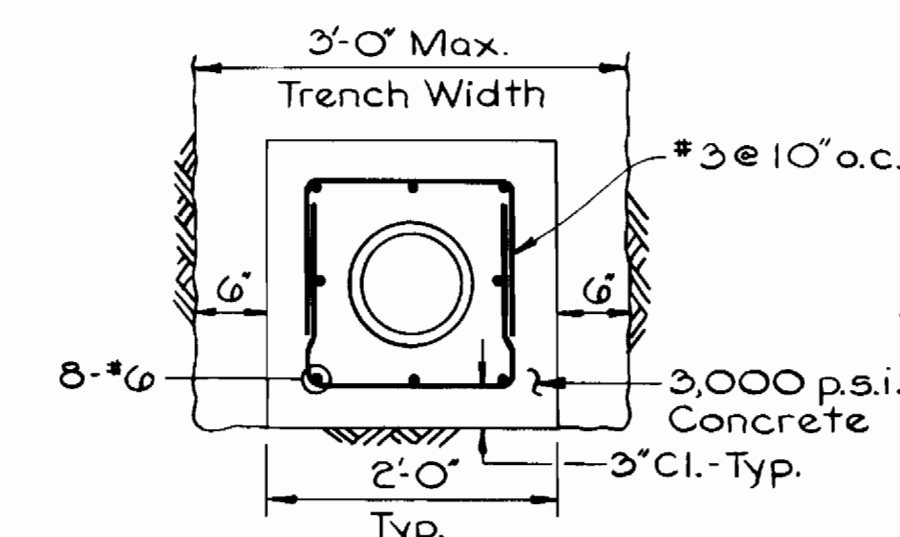
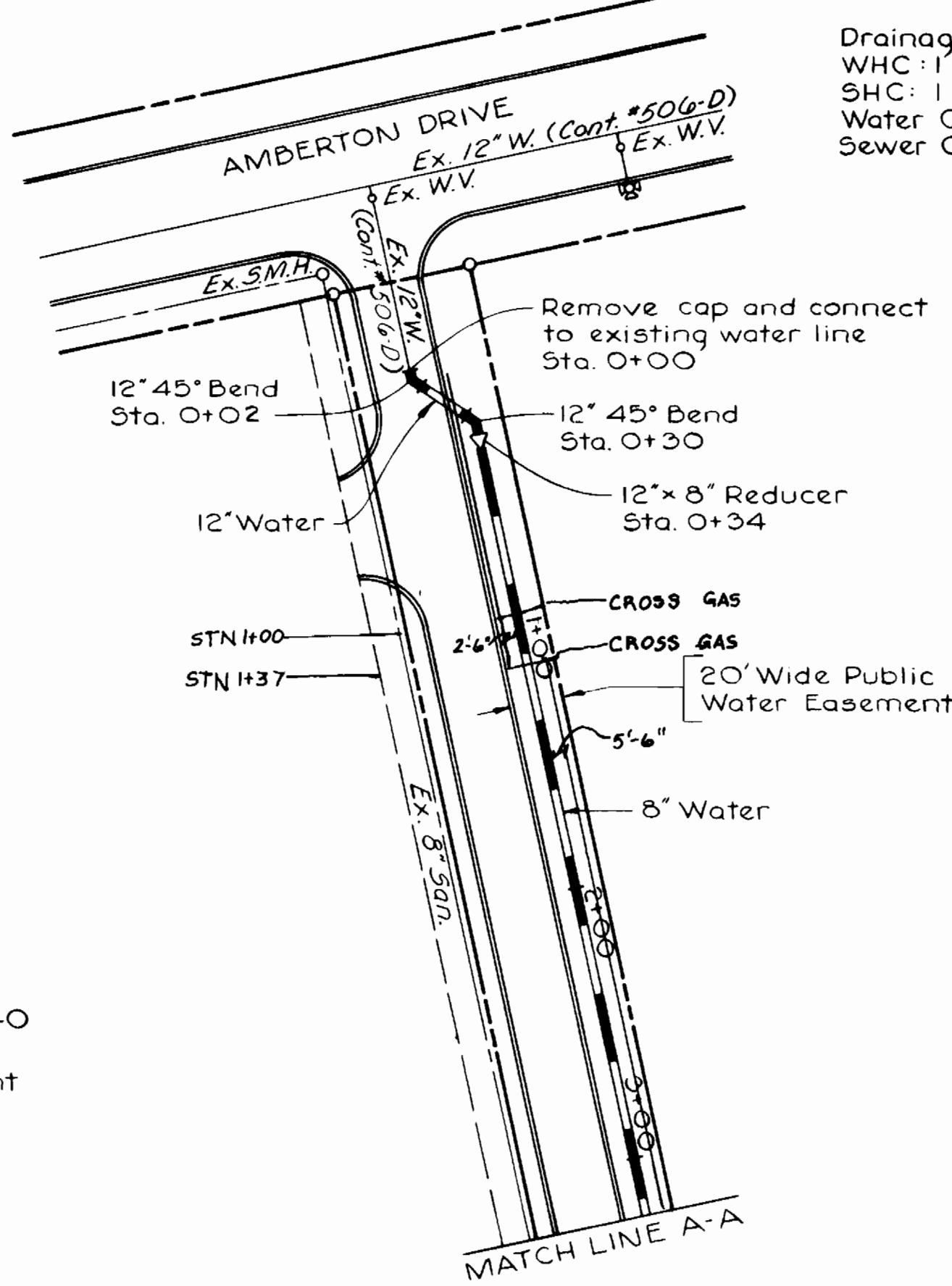
VICINITY MAP
 Scale: 1" = 600'

GENERAL NOTES

- APPROXIMATE LOCATION OF EXISTING MAINS ARE SHOWN. THE CONTRACTOR SHALL TAKE ALL NECESSARY PRECAUTIONS TO PROTECT EXISTING MAINS AND SERVICES AND MAINTAIN UNINTERRUPTED SUPPLY ANY DAMAGE INCURRED SHALL BE REPAIRED IMMEDIATELY TO THE SATISFACTION OF THE ENGINEER AT THE CONTRACTOR'S EXPENSE.
- ALL PIPE ELEVATIONS SHOWN ARE INVERT ELEVATIONS.
- FOR DETAILS NOT SHOWN ON THE DRAWINGS, USE HOWARD COUNTY STANDARD DETAILS.
- FOR MATERIAL AND CONSTRUCTION METHODS, USE HOWARD COUNTY STANDARD SPECIFICATIONS.
- CONTRACTOR SHALL LOCATE EXISTING UTILITIES A MINIMUM OF TWO (2) WEEKS IN ADVANCE OF CONSTRUCTION OPERATIONS IN THE VICINITY OF PROPOSED UTILITIES AT HIS OWN EXPENSE.
- CONTRACTOR SHALL NOTIFY THE FOLLOWING UTILITIES OR AGENCIES AT LEAST FIVE (5) WORKING DAYS BEFORE STARTING WORK SHOWN ON THESE PLANS.
 BALTIMORE GAS & ELECTRIC COMPANY - UNDERGROUND GAS DISTRIBUTION CUSTOMER SERVICE: 685-0123
 BALTIMORE GAS & ELECTRIC COMPANY - UNDERGROUND ELECTRIC DISTRIBUTION - CUSTOMER SERVICE: 685-0123
 ENGINEERING "DAMAGE CONTROL": 234-5621
 "MISS UTILITY": 1-559-0100
 CHESAPEAKE & POTOMAC TELEPHONE COMPANY: 725-9976
 BUREAU OF UTILITIES, HOWARD COUNTY: 992-2366
- ALL WATER MAINS TO BE C.I.P OR D.I.P UNLESS NOTED OTHERWISE.
- TOP OF WATER MAINS TO HAVE A MINIMUM OF 3'-0" COVER UNLESS OTHERWISE NOTED.
- VALVES ADJACENT TO TEES SHALL BE STRAPPED TO TEES.
- BLOCK ALL FITTINGS WITH CONCRETE.
- BURY LINE ELEVATIONS ON FIRE HYDRANTS SHALL BE SET TO THE ELEVATION ON THE DRAWINGS. ALL FIRE HYDRANTS SHALL BE STRAPPED AND BUTRESSED WITH CONCRETE IN ACCORDANCE WITH STANDARD DETAILS, SOIL AROUND THE FIRE HYDRANT TO BE COMPACTED IN ACCORDANCE WITH SECTIONS 1003 AND 1008 OF STANDARD SPECIFICATIONS.
- ALL WATER HOUSE CONNECTIONS SHALL BE FOR AN INSIDE METER SETTING.
- THE CONTRACTOR SHALL NOT OPERATE ANY WATER MAIN VALVES ON THE EXISTING SYSTEM.
- WATER MAINS AND WATER HOUSE CONNECTION LINES MUST BE PLACED SO AS TO HAVE AT LEAST ONE (1) FOOT SEPARATION FROM THE SEWER MAIN OR SEWER HOUSE CONNECTION AS THEY PASS ABOVE IT.

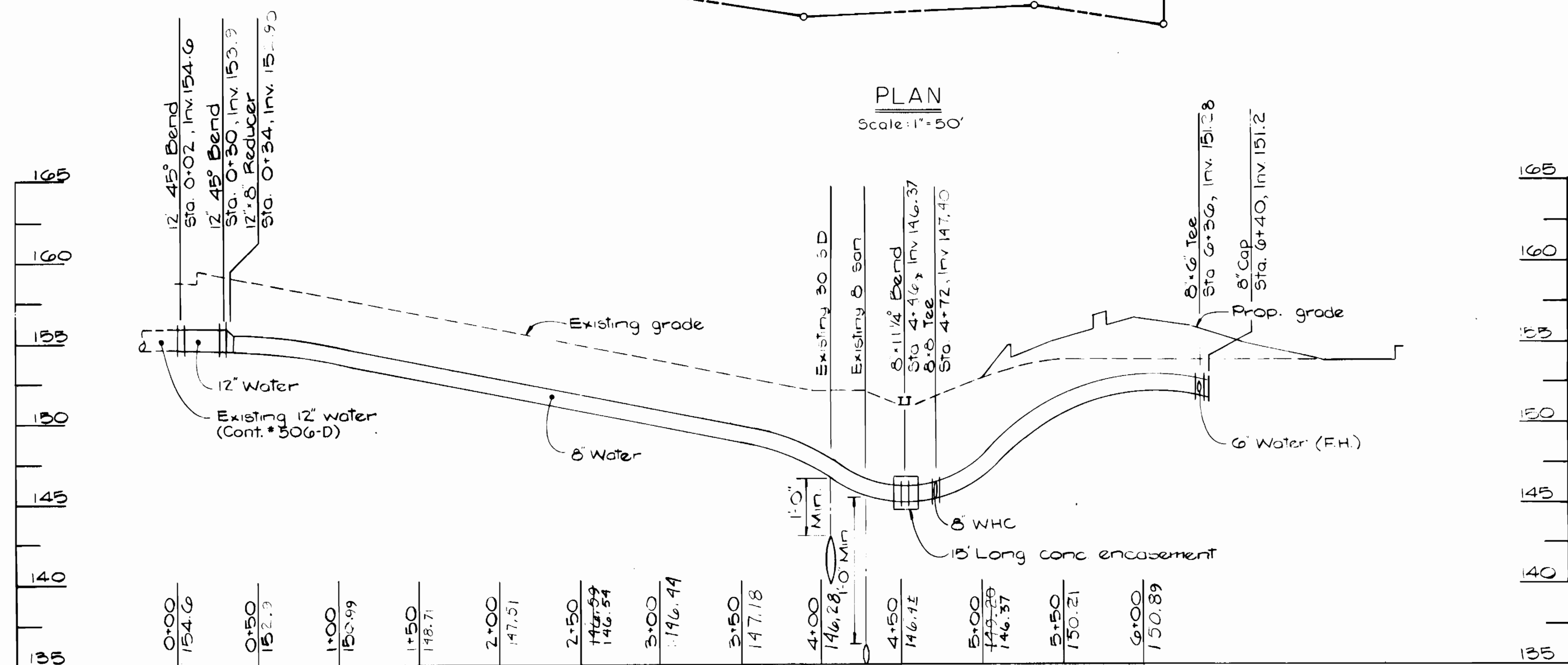


PLAN
 Scale: 1" = 50'



CONCRETE ENCASUREMENT DETAIL
 Scale: 3/4" = 1'-0"

QUANTITIES			
ITEM	EST'D.	AS BUILT	SUPPLIER
12" Water	36'	40'	A+P SUPPLIES
8" Water	686'	605'	A+P
6" Water	14'	13'	A+P
Fire Hydrant	1	1	A+P
6" F.H. Valve	1	1	A+P
8" WHC	1	1	A+P
8" Valve	1	1	A+P
8" Cap	1	1	A+P
12" 45° Bend	2	2	A+P
8" 1 1/4" Bend	1	1	A+P
12" x 8" Reducer	1	1	A+P
8" x 8" Tee	1	1	A+P
8" x 6" Tee	1	1	A+P



PROFILE
 Scale: 1" = 50' Horiz
 1" = 5' Vert

Sediment Control measures for this contract will be implemented in accordance with Article 15 of these specifications and also as shown on the Grading and Sediment Control Plan, SDP-85-212.

This Development Plan is approved for Erosion and Sediment Control by Howard Soil Conservation District.

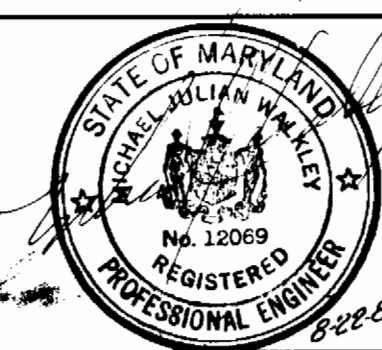
Review for Howard County Soil Conservation District and meets technical requirements.
 [Signature] 8/23/85
 U.S. Soil Conservation Service Date

Approved:
 [Signature] 8/23/85
 Howard Soil Conservation District Date

CONTRACT NO. 14-1393D
 PARCEL D-2
 WATER EXTENSION
 HOWARD COUNTY, MARYLAND

DEPARTMENT OF PUBLIC WORKS
 HOWARD COUNTY, MARYLAND
 Director of Public Works Date 9-5-85
 Chief, Bureau of Engineering Date 9-4-85
 Chief, Bureau of Utilities Date 8-23-85
 Chief, Land Development Division Date 9-2-85

MICHAEL J. WALKLEY, PE.
 2 E. WHEELING STREET
 SUITE 400
 BALTIMORE, MARYLAND 21230
 PHONE: 837-0170



Des: W.C.P.Jr.			
Drn: W.C.P.Jr.			
Chk: M.J.W.	W.C.P.	Cover & Shortened Water Line	11-15
Date: 7-16-85	W.C.P.	Vicinity Map, Conc. Encasement & Quantities	8-22
By: No.		Revision	Date

WATER PLAN AND PROFILE
 600' Scale Map No. 37 Block No. B
 J.A.W 7-1-86 AS-BUILT

ROUTE ONE HUNDRED BUSINESS PARK
 PARCEL D-2
 CONTRACT NO. 14-1393D
 FIRST ELECTION DISTRICT
 HOWARD COUNTY, MARYLAND
 Scale: AS NOTED
 Sheet 1 of 1