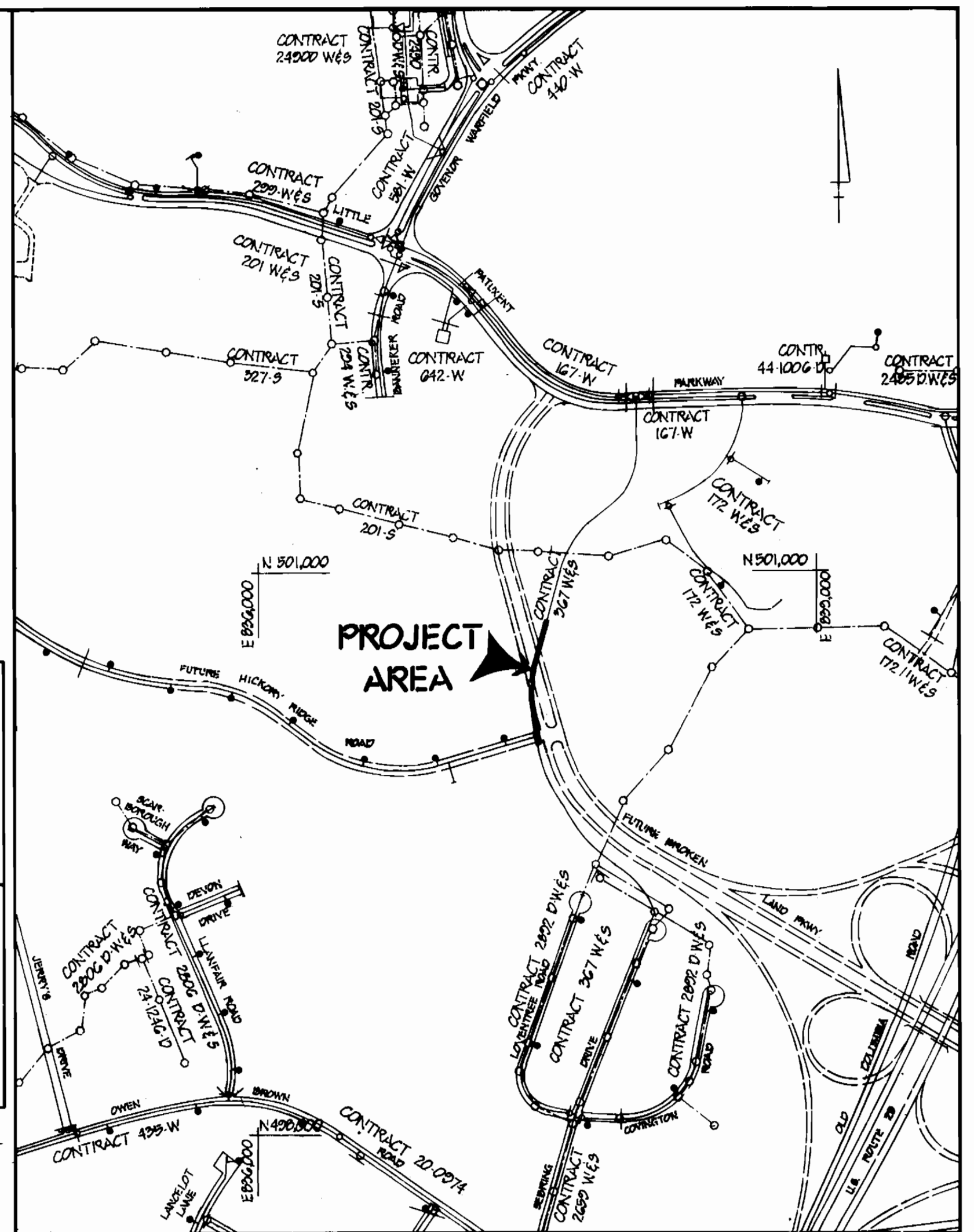
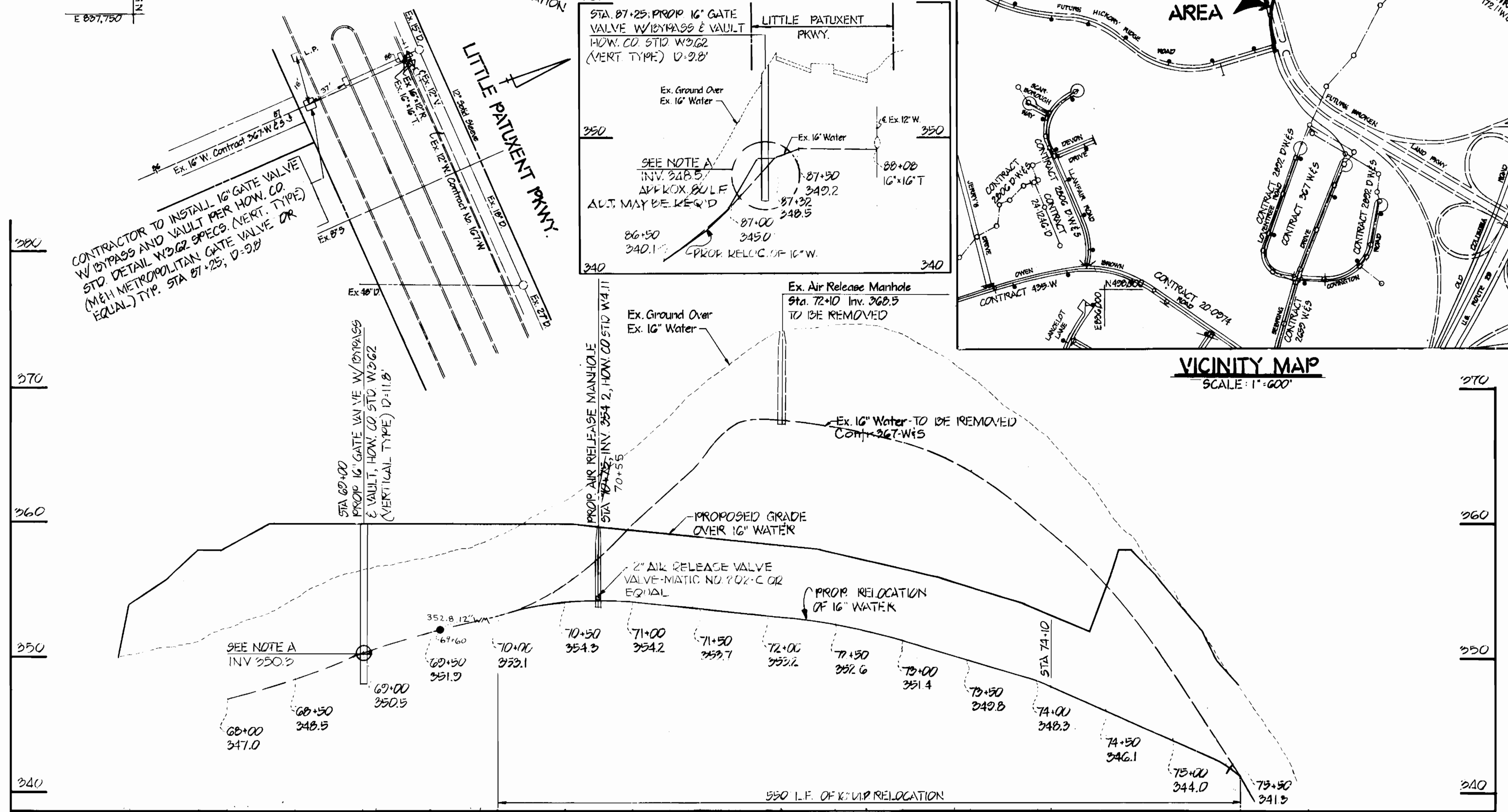


BENCH MARKS
 W.R.&A. B.M. #Z-12 ELEV. 350.65
 R.R. SPIKE BASE 15" OAK @ TOP STREAM BANK 20'± PAST P.I. #Z-621
 W.R.&A. B.M. #Z-13 ELEV. 340.93
 R.R. SPIKE BASE 15" BEECH 10'± LEFT OF P.I. #Z-623

- SEDIMENT CONTROL NOTES**
- FOR SEDIMENT CONTROL FOR THIS CONTRACT SEE THE APPROVED ROAD CONSTRUCTION PLANS FOR FILE #04-05-41.
 - MATERIAL FROM TRENCH EXCAVATION TO BE PLACED ON UPHILL SIDE OF TRENCH.
 - CONTRACTOR TO BACKFILL, COMPACT AND STABILIZE IMMEDIATELY AFTER INSTALLATION OF PIPE. NO TRENCHES WILL BE LEFT OPEN AT THE END OF EACH DAY, EXCEPT THAT PORTION THE WORK HAS STOPPED.
 - ANY SEDIMENT CONTROL FACILITIES ENCOUNTERED DURING PIPE CONSTRUCTION TO BE RETURNED TO ORIGINAL CONDITION IMMEDIATELY UPON COMPLETION OF THAT PORTION OF WORK.
 - SEDIMENT CONTROL MEASURES FOR THIS CONTRACT WILL BE IMPLEMENTED IN ACCORDANCE WITH ARTICLE 15 OF THE HOWARD COUNTY STANDARD SPECIFICATIONS AND AS PER ROAD CONSTRUCTION PLANS.



- GENERAL NOTES:**
PART I
- APPROXIMATE LOCATION OF EXISTING MAINS ARE SHOWN. THE CONTRACTOR SHALL TAKE ALL NECESSARY PRECAUTIONS TO PROTECT EXISTING MAINS AND SERVICES AND MAINTAIN UNINTERRUPTED SUPPLY. ANY DAMAGE INCURRED SHALL BE REPAIRED IMMEDIATELY TO THE SATISFACTION OF THE ENGINEER, AT THE CONTRACTOR'S EXPENSE.
 - ALL HORIZONTAL CONTROLS ARE BASED ON MARYLAND STATE COORDINATES.
 - ALL VERTICAL CONTROLS ARE BASED ON U.S.G.S. DATUM.
 - ALL PIPE ELEVATIONS SHOWN ARE INVERT ELEVATIONS.
 - CLEAR ALL UTILITIES BY A MINIMUM OF 6". CLEAR ALL POLES BY 2'-0" MIN. OR TUNNEL AS REQUIRED. ANY COST INCURRED TO THE CONTRACTOR FOR TUNNELING OR BRACING AT POLES SHALL BE INCLUDED IN UNIT PRICES BID FOR EXCAVATION AND BACKFILL.
 - FOR DETAILS NOT SHOWN ON DRAWINGS USE HOWARD COUNTY STANDARD DETAILS.
 - FOR MATERIALS AND CONSTRUCTION METHODS USE HOWARD COUNTY STANDARD SPECIFICATIONS.
 - CONTRACTOR SHALL LOCATE EXISTING UTILITIES A MINIMUM OF TWO (2) WEEKS IN ADVANCE OF CONSTRUCTION OPERATIONS IN THE VICINITY OF PROPOSED UTILITIES AT HIS OWN EXPENSE.
 - CONTRACTOR SHALL NOTIFY THE FOLLOWING UTILITIES OR AGENCIES AT LEAST FIVE (5) WORKING DAYS BEFORE STARTING WORK SHOWN ON THESE PLANS:
 - STATE HIGHWAY ADMINISTRATION: 531-5533
 - BALTIMORE GAS AND ELECTRIC CO. - UNDERGROUND ELECTRIC DISTRIBUTION (CUSTOMER SERVICE): 685-0123
 - BALTIMORE GAS AND ELECTRIC CO. - UNDERGROUND GAS DISTRIBUTION (CUSTOMER SERVICE): 685-0123
 - ENGINEERING "DAMAGE CONTROL": 234-5621
 - "MISS UTILITY": (1) 559-0100
 - CHESAPEAKE AND POTOMAC (C & P) TELEPHONE COMPANY: 725-9976
 - AMERICAN TELEPHONE AND TELEGRAPH - CABLE LOCATION DIV.: 393-3553
 - COLONIAL PIPELINE COMPANY: 781-4641
 - BUREAU OF UTILITIES HOWARD COUNTY: 992-2366
 - TREES ARE TO BE PROTECTED FROM DAMAGE TO MAXIMUM EXTENT. TREES LOCATED WITHIN THE CONSTRUCTION STRIP ARE NOT TO BE REMOVED OR DAMAGED BY THE CONTRACTOR.
 - CONTRACTOR SHALL REMOVE TREES, STUMPS AND ROOTS ALONG LINE OF EXCAVATION AS DIRECTED BY THE ENGINEER. PAYMENT FOR SUCH REMOVAL SHALL BE INCLUDED IN THE UNIT PRICE BID FOR EXCAVATION AND BACKFILL.
 - PLACE REGULATION "MEN WORKING" AND WARNING SIGNS AS REQUIRED TO COMPLY WITH MARYLAND STATE HIGHWAY ADMINISTRATION MANUAL OF TRAFFIC CONTROL FOR HIGHWAY CONSTRUCTION AND MAINTENANCE OPERATIONS.
- PART II**
- ALL WATER MAINS TO BE D.I.P. UNLESS OTHERWISE NOTED.
 - TOP OF ALL WATER MAINS TO HAVE A MINIMUM OF 4' COVER UNLESS OTHERWISE NOTED.
 - VALVES ADJACENT TO TEES SHALL BE STRAPPED TO TEES.
 - BLOCK ALL FITTINGS WITH CONCRETE.
 - BURY LINE ELEVATIONS ON FIRE HYDRANTS SHALL BE SET TO THE ELEVATIONS SHOWN ON THE DRAWINGS. ALL FIRE HYDRANTS SHALL BE STRAPPED AND BUTTRESSED WITH CONCRETE IN ACCORDANCE WITH STANDARD DETAILS. SOIL AROUND THE FIRE HYDRANT TO BE COMPACTED IN ACCORDANCE WITH SECT. 10.03 & 10.08 OF THE STANDARD SPECIFICATIONS.
 - THE CONTRACTOR SHALL NOT OPERATE ANY WATER MAIN VALVES ON THE EXISTING SYSTEM.



PROFILE
 SCALE: HOR. 1"=50'
 VERT. 1"=5'

NOTE A:
 CONTRACTOR SHALL ADJUST EX. 16" WATER LINE AS NECESSARY TO ENSURE VERTICAL ALIGNMENT OF NEW VALVE IN VAULT.

TYPE OF BUILDING: N/A
 NO. OF LOTS: N/A
 NUMBER OF WATERHOUSE CONN.: N/A
 NUMBER OF SEWERHOUSE CONN.: N/A
 DRAINAGE AREA: N/A

WATER & SEWER CODE
 SEWER CODE: N/A
 WATER CODE: E 2B

QUANTITIES			
ITEM	BID	AS-BUILT	MATERIAL/SUPPLIER
16" WATER LF	600	537	GRIFFIN PIPE (DIP)
16" VERTICAL WATER VALVE	2	2	M.H. VALVE CO.
REINFORCED #4 CONC. VAULTS	2	2	PRECAST-PCONCAST
AIR RELEASE MANHOLES	1	1	VAL-MATIC / H.H. ATLANTIC

A.S. - BUILTS (CENTURY)

REVIEWED FOR HOWARD SOIL CONSERVATION DISTRICT AND MEETS TECHNICAL REQUIREMENT
 Signature: *James M. Nelson* 7/30/85
 U.S. SOIL CONSERVATION SERVICE

THIS DEVELOPMENT PLAN IS APPROVED FOR SOIL EROSION AND SEDIMENT CONTROL BY THE HOWARD COUNTY CONSERVATION DISTRICT.
 APPROVED: *Stephen L. Fisher* 7/30/85
 HOWARD S.C.D. DATE

DEPARTMENT OF PUBLIC WORKS
 HOWARD COUNTY, MARYLAND
 Signature: *John C. Nalley* 8-1-85
 DIRECTOR OF PUBLIC WORKS DATE
 Signature: *Robert M. Bussner* 7-25-85
 CHIEF - BUREAU OF UTILITIES DATE

CENTURY ENGINEERING, INC.
 CONSULTING ENGINEERS PLANNERS
 32 WEST ROAD
 TOWSON, MARYLAND 21204
 Signature: *Gregory R. Klar* 4-18-85
 GREGORY R. KLAR DATE

DES. A/E/D	EE1	I	PER COMMENTS DATED 7-19-85	7/22/85
DRN/EE1 & A/E/D				
CHK: G.R.K.				
DATE: 4-15-85				
BY	NO.	REVISION	DATE	600' SCALE MAP NO.
				BLOCK NO.

RELOCATED 16" WATER MAIN
 BROKEN LAND PARKWAY WEST
 CONTRACT NO. 44-1388-D

PARCELS 49 & 81
 5TH ELECTION DISTRICT

TAX MAPS 35 & 36
 HOWARD COUNTY, MARYLAND

SCALE AS SHOWN
 SHEET 1 OF 1