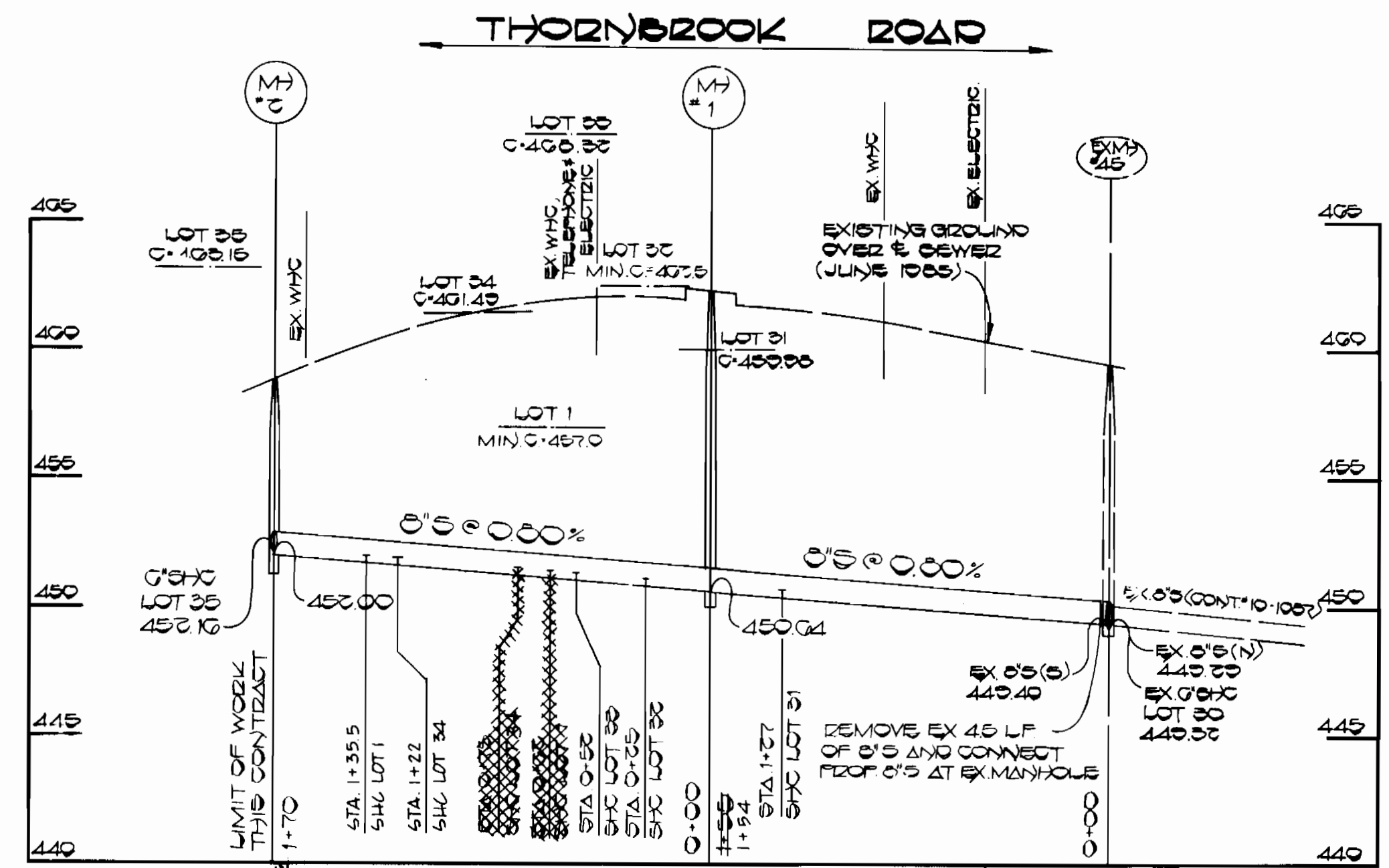


PLAN
1"=50'

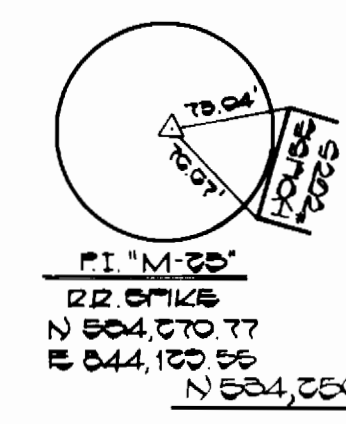


PROFILE
SCALE: HOR 1"=50'
VERT 1"=5'

BENCH MARK

B.M. # M-33 ELEV 404.10
X-CUT ON FIRE HYDRANT BONNET
EAST SIDE THORNBROOK RD
BETWEEN LOTS 1 & 2

B.M. # M-34 ELEV 450.54
NAIL IN BITUMINOUS GLUE ON
SOUTH SIDE OF THORNBROOK
ROAD BETWEEN LOTS 34 & 35

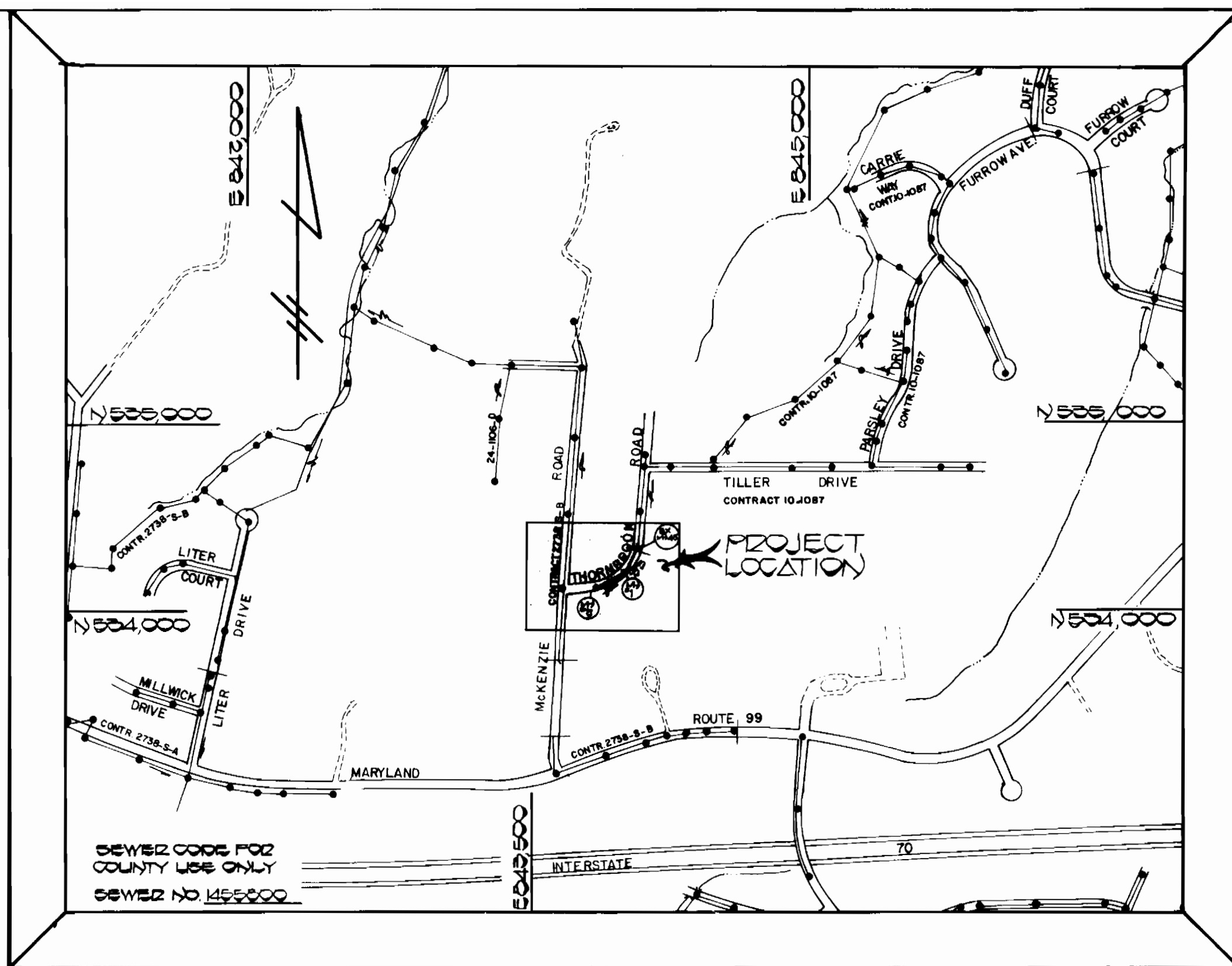


Property of
BOARD OF EDUCATION
OF HOWARD COUNTY
545 / 101
T.M.# 17 P# 21

NOTE: ALL AREAS BEHIND THE CURB WHICH
ARE RESTORED DURING INSTALLATION
OF THE 8-INCH SEWER MAIN AND THE
6-INCH SEWER HOUSE CONNECTIONS
SHALL BE RESTORED USING SOLID
SCODDING

MANHOLE	STAKE OUT	TABULE
M#1	1+01.00	2' LEFT
M#2	2+00.00	4' RIGHT

SEWER HOUSE CONNECTIONS INVERT ELEVATIONS AT PROPERTY LINE		
STATION	LOT	ELEVATION
EX. M#215 TO M#1		
1+27.17	LOT 31	450.00
M#1 TO M#2		
0+75.17	LOT 32	451.10
0+52.17	LOT 33	451.54
0+00.17	LOT 1	451.70
0+75.17	LOT 34	451.70
1+70.00	LOT 35	452.40



VICINITY MAP
SCALE: 1"=600'

GENERAL NOTES

- APPROXIMATE LOCATION OF EXISTING MAINS ARE SHOWN. THE CONTRACTOR SHALL TAKE ALL NECESSARY PRECAUTIONS TO PROTECT EXISTING MAINS AND SERVICES AND MAINTAIN UNINTERRUPTED SUPPLY. ANY DAMAGE INCURRED SHALL BE REPAIRED IMMEDIATELY TO THE SATISFACTION OF THE ENGINEER AT THE CONTRACTOR'S EXPENSE.
- ALL HORIZONTAL CONTROLS ARE BASED ON MARYLAND STATE COORDINATES.
- ALL VERTICAL CONTROLS ARE BASED ON U.S.G.S. DATA.
- ALL PIPE ELEVATIONS SHOWN ARE INVERT ELEVATIONS.
- CLEAR ALL UTILITIES BY A MINIMUM OF 6".
- FOR DETAILS NOT SHOWN ON THE DRAWINGS, AND FOR MATERIALS AND CONSTRUCTION METHODS, USE HOWARD COUNTY DESIGN MANUAL, VOLUME IV, STANDARD SPECIFICATIONS AND DETAILS FOR CONSTRUCTION. THE CONTRACTOR SHALL HAVE A COPY OF VOLUME IV ON THE JOB.
- WHERE TEST PITS HAVE BEEN MADE ON EXISTING UTILITIES, THEY ARE NOTED BY THE SYMBOL [] AT THE LOCATION OF THE TEST PIT. A NOTE OR NOTES CONTAINING THE RESULTS OF THE TEST PIT OR PITS IS INCLUDED ON THE DRAWINGS. EXISTING UTILITIES IN THE VICINITY OF THE PROPOSED WORK FOR WHICH TEST PITS HAVE NOT BEEN DUG SHALL BE VERIFIED BY THE CONTRACTOR TO HIS OWN SATISFACTION. ANY DAMAGE TO EXISTING FACILITIES DUE TO THE CONTRACTOR'S NEGLIGENCE SHALL BE REPAIRED AT THE CONTRACTOR'S EXPENSE.
- CONTRACTOR SHALL NOTIFY THE FOLLOWING UTILITIES OR AGENCIES AT LEAST FIVE WORKING DAYS BEFORE STARTING WORK SHOWN ON THESE PLANS:
 - STATE HIGHWAY ADMINISTRATION - 531-5533
 - BALTIMORE GAS & ELECTRIC CO. - CONTRACTOR SERVICES 561-2585
 - BALTIMORE GAS & ELECTRIC CO. - UNDER GROUND DAMAGE CONTROL - 234-5621
 - BALTIMORE GAS & ELECTRIC CO. TROUBLE SHOOTING - 298-9013
 - MISS UTILITY - 1-859-0100
 - COLONIAL PIPELINE CO. - 795-1390
 - BUREAU OF UTILITIES, HOWARD COUNTY DEPARTMENT OF PUBLIC WORKS - 992-2366
- TREES AND SHRUBS ARE TO BE PROTECTED FROM DAMAGE TO MAXIMUM EXTENT. TREES AND SHRUBS LOCATED WITHIN THE CONSTRUCTION STRIP ARE NOT TO BE REMOVED OR DAMAGED BY THE CONTRACTOR.
- CONTRACTOR SHALL REMOVE TREES, STUMPS AND ROOTS ALONG THE LINE OF EXCAVATION. PAYMENT FOR SUCH REMOVAL SHALL BE INCLUDED IN THE UNIT PRICE BID FOR CONSTRUCTION OF THE MAIN.
- ALL SEWER MAINS SHALL BE C.S.P., R.C.S.P., V.C.P.X., A.G.P. CLASS 2400 OR P.V.C. UNLESS OTHERWISE NOTED.
- THE CONTRACTOR SHALL PROVIDE A JOINT IN ALL SEWER MAINS WITHIN 2'-0" OF EXTERIOR MANHOLE WALL.
- ALL MANHOLES SHALL BE 4'-0" INSIDE DIAMETER UNLESS OTHERWISE NOTED.
- T. B. DENOTES TEST BORING.
- MANHOLES SHOWN WITH 12" AND 16" WALLS ARE FOR BRICK MANHOLES ONLY.
- MANHOLES DESIGNATED W.T. IN PLAN AND PROFILE SHALL HAVE WATERTIGHT FRAME AND COVERS, STANDARD DETAIL G5.52. WHERE WATERTIGHT MANHOLE FRAME AND COVER IS USED, SET TOP OF FRAME 1'-6" ABOVE FINISHED GRADE UNLESS OTHERWISE NOTED ON THE DRAWINGS.
- HOUSE(S) WITH THE SYMBOL "C.N.S." INDICATES THAT THE CELLAR CANNOT BE SERVED.

QUANTITIES			
ITEM	EST'D	AS-BUILT	SUMMED
8" SEWER	306 LF	325 P.V.C.	A.P. SUPPLY
6" SEWER	115 LF	105 P.V.C.	A.P. SUPPLY
MANHOLE	3 EA.	2	ATLANTIC

TRAVERSE STATIONING TABLE	
TRAVERSE POINT	STATION
M#33	0+00.00
M#34	3+01.00
M#35	5+19.70

THIS DEVELOPMENT PLAN IS APPROVED FOR EROSION AND SEDIMENT CONTROL BY THE HOWARD SOIL CONSERVATION DISTRICT.

APPROVED: *Stephen L. Fisher* 10/30/85
HOWARD SOIL CONSERVATION DISTRICT DATE

SEDIMENT CONTROL MEASURES FOR THIS CONTRACT WILL BE IMPLEMENTED IN ACCORDANCE WITH DIVISION III, VOLUME IV OF THE HOWARD COUNTY DESIGN MANUAL AND THE STANDARDS AND SPECIFICATIONS FOR SOIL EROSION AND SEDIMENT CONTROL. THIS PLAN IS APPROVED FOR EROSION AND SEDIMENT CONTROL BY THE HOWARD SOIL CONSERVATION DISTRICT.

APPROVED: *Terrell A. Fisher* 10/30/85
U.S. SOIL CONSERVATION DISTRICT DATE

DEPARTMENT OF PUBLIC WORKS HOWARD COUNTY, MARYLAND DIRECTOR OF PUBLIC WORKS: <i>Richard B. Benig</i> 10-25 CHIEF, BUREAU OF UTILITIES: <i>Richard B. Benig</i> 10-25	FISHER, COLLINS AND CARTER, INC. CONSULTING ENGINEERS AND LAND SURVEYORS 8388 COURT AVENUE ELLICOTT CITY, MARYLAND 21043 TELE: (301) 461-2855 TERRELL A. FISHER, DATE	DES: D.B.S.						SEWER MAIN EXTENSION PLAN & PROFILE 600' SCALE MAP NO. 17 BLOCK NO.	THORNBROOK ROAD SEWER EXTENSION CAPITAL PROJECT NO. S-6685 CONTRACT NO. 10-1387 SECOND ELECTION DISTRICT HOWARD COUNTY, MARYLAND	SCALE AS SHOWN
		DRN: D.B.S.								