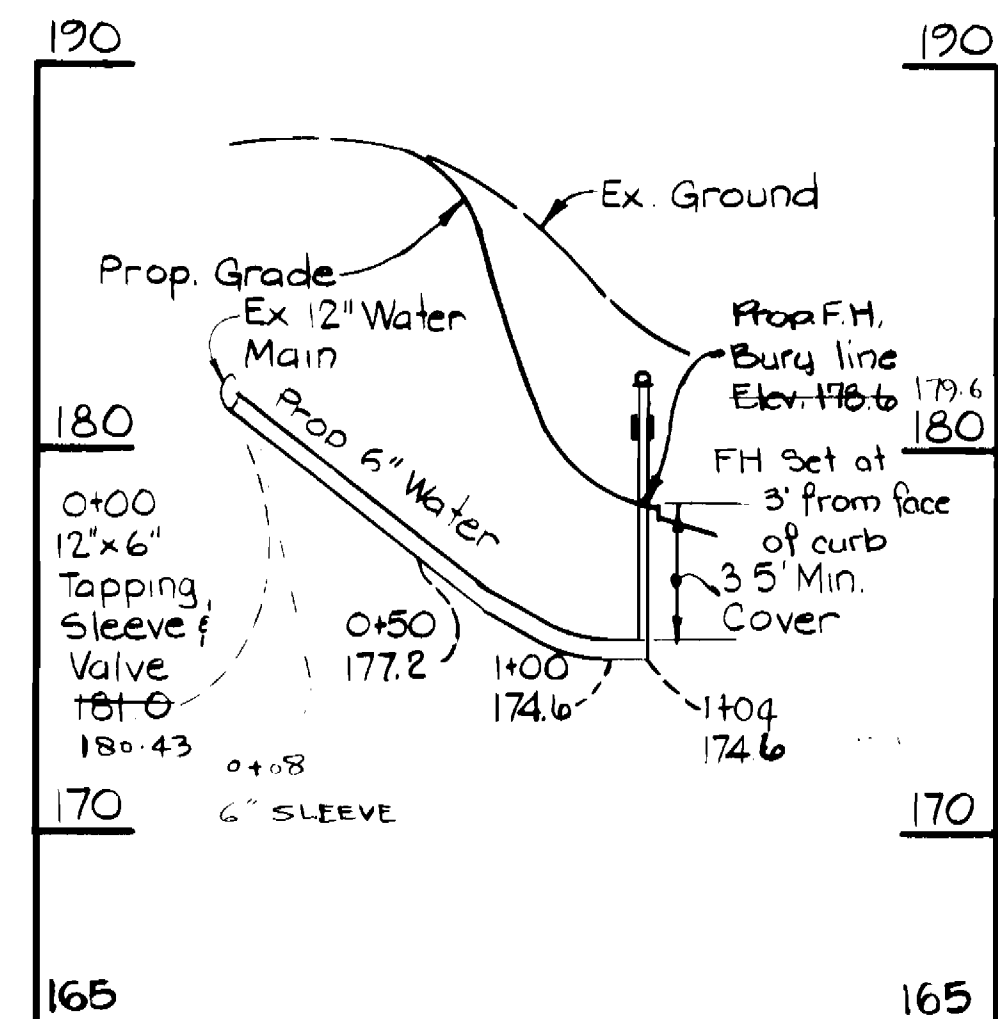


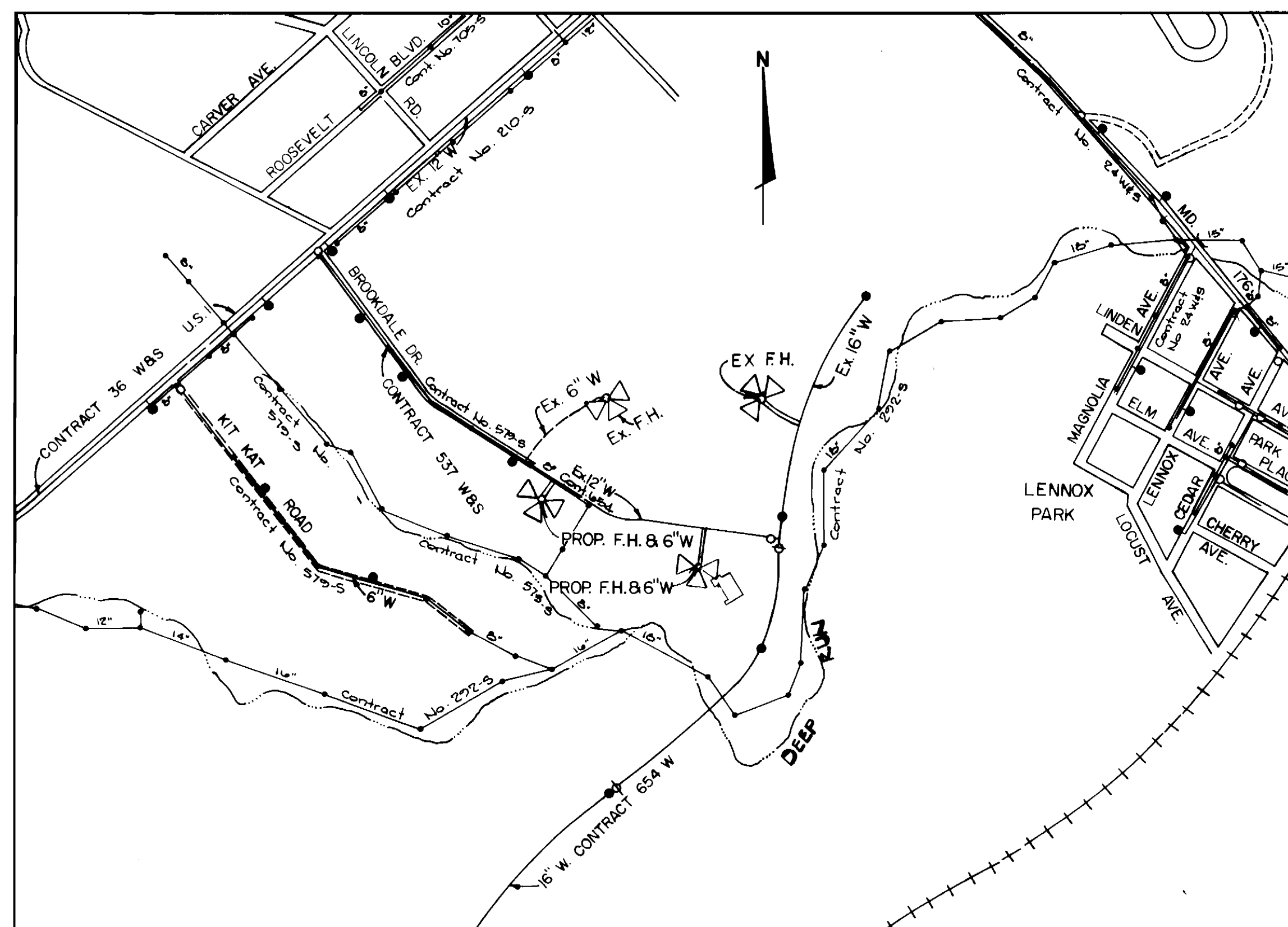
QUANTITIES			
ITEM	ESTIMATED	AS BUILT	MATERIAL/SUP.
6" Water Main	140 L.F.	108 L.F.	ATLANTIC STATE A.S.P.
8" Water Main	122 L.F.	192 L.F.	GRIFFIN BELAIR ROAD SUPPLY
6" Valve	2 Units	1	U.S. PIPE / BELAIR
12"x6" Tapping Sleeve	1 Unit	1	MUELLER/A.S.P.
Fire Hydrant	2 Units	2	MUELLER/A.S.P.
Manhole	12 V.F.	12 V.F.	ATLANTIC PRE-CAST
8" Sewer	10 L.F.	10 L.F.	JEM BELAIR SUPPLY
12"x6" Tapping Sleeve & Valve	1 Unit	1	MUELLER/A.S.P.
8" S.H.C.	333 L.F.	PRIVATE	JEM/BELAIR
3/4" W.H.C.	165 L.F.	PRIVATE	GRIFFIN/BELAIR
3" VALVE	1 UNIT	1	U.S. PIPE / BELAIR

GENERAL NOTES

- Approximate location of existing mains are shown. The contractor shall take all necessary precautions to protect existing mains and services and maintain uninterrupted supply. Any damage incurred shall be repaired immediately to the satisfaction of the Engineer at the Contractor's expense.
- All horizontal controls are based on Maryland State Coordinates.
- All vertical controls are based on U.S.G.S. data.
- All pipe elevations shown are invert elevations.
- Clear all utilities by a minimum of 6". Clear all poles by 2'-0" minimum or tunnel as required. The owner has contacted the utilities companies and has made arrangements for bracing of poles as shown on the drawings. In the event the contractor's work requires the bracing of additional poles, an cost incurred by the owner for the bracing of additional poles or damages shall be deducted from money owed the contractor. The contractor shall coordinate with the utility companies to schedule the bracing of the poles.
- For details not shown on the drawings, and for materials and construction methods, use Howard County Design Manual Volume IV, Standard Specifications and Details for Construction. The contractor shall have a copy of Volume IV on the job.
- Where test pits have been made on existing utilities, they are noted by the symbol at the location of the test pit. A note or notes containing the results of the test pit or pits is included on the drawings. Existing utilities in the vicinity of the proposed work for which test pits have not been dug shall be located by contractor two weeks in advance of construction operations at his own expense.
- Contractor shall notify the following utilities or agencies at least five working days before starting work shown on these plans:
 State Highway Administration - 531-5533
 Baltimore Gas & Electric Co. - Contractor Services 561-2585
 Baltimore Gas & Electric Co. Underground Damage Control 234-5621
 Baltimore Gas & Electric Co. Trouble Shooting 298-9013
 Miss Utility - 1-559-0100
 Colonial Pipeline Co. - 795-1390
 Bureau of Utilities, Howard County Dept. of Public Works - 992-2366
- Trees and shrubs are to be protected from damage to maximum extent. Trees and shrubs located within the construction strip are not to be removed or damaged by the contractor.
- Contractor shall remove trees, stumps, and roots along line of excavation. Payment for such removal shall be included in the unit price bid for construction of the main.
- All water mains to be C.I.P. or D.I.P. unless otherwise noted.
- Tops of all water mains to have a minimum of 3 1/2' cover unless otherwise noted.
- Valves adjacent to tees shall be strapped to tees.
- All fittings shall be buttressed or anchored with concrete in accordance with the Standard Details unless otherwise provided for on the drawings.
- Fire hydrants shall be set to the bury line elevations shown on the drawings.
- All fire hydrants shall be strapped and buttressed with concrete in accordance with Standard Details. Soil around the fire hydrant shall be compacted in accordance with Section 1003 and 1006 of the Standard Specifications.
- The contractor shall not operate any water main valves on the existing water system.
- Place regulation 'Man Working' and warning signs as required to comply with Maryland State Highway Administration Manual of Traffic Control for Highway Construction and Maintenance Operations.
- All water house connections shall be for an inside meter setting.
- For all copper water house connections, utilize flared type fittings only.
- All sewer mains shall be C.S.P.X., R.C.S.P., V.C.P.X., A.C.P. Class 2400 or P.V.C. unless otherwise noted.
- The contractor shall provide a joint in all sewer mains within 20' of exterior manhole wall.
- All manholes shall be 4'-0" inside diameter, unless otherwise noted.



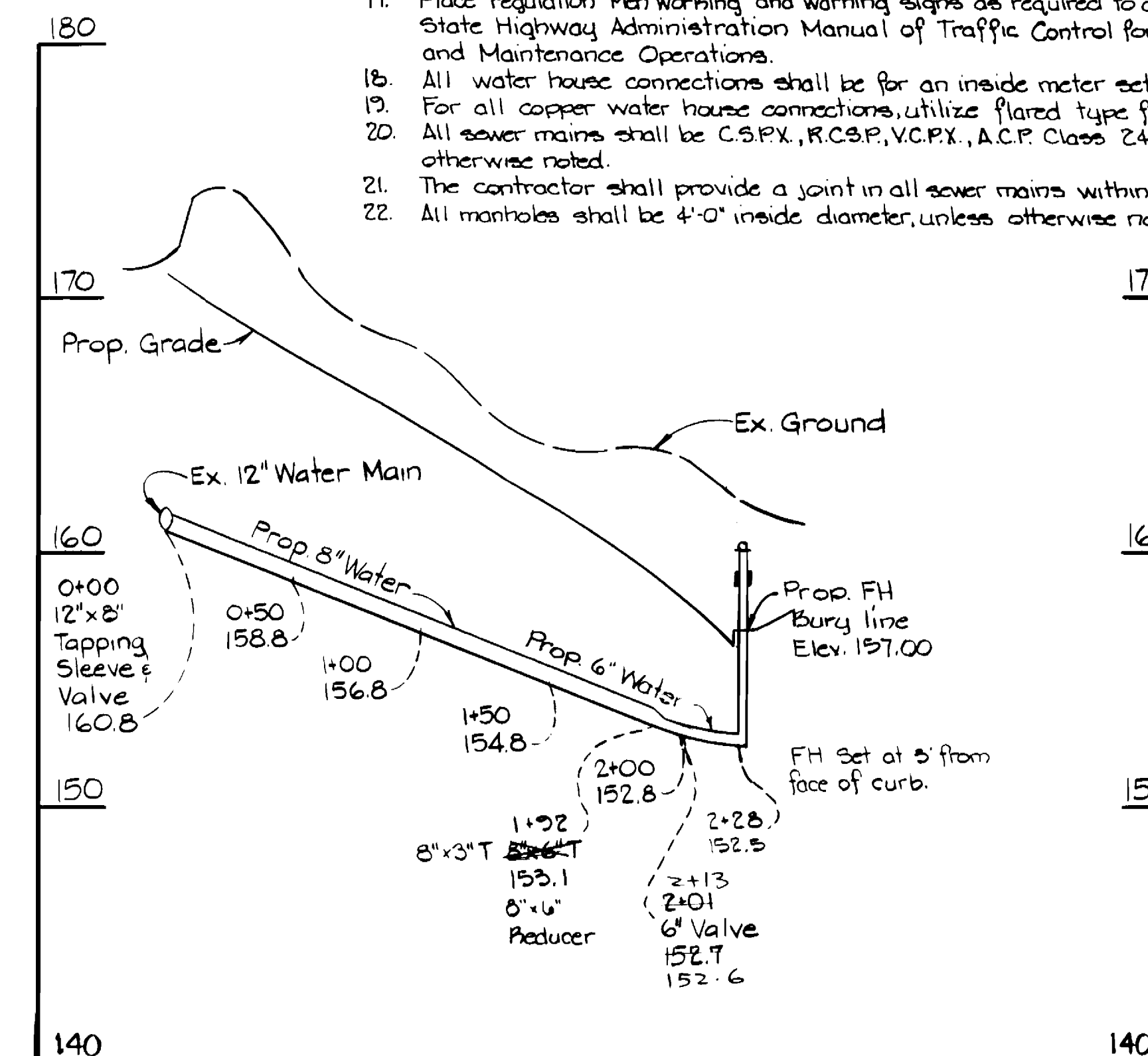
PROFILE 1
 Horiz: 1"=50'
 Vert: 1"=5'



WATER & SEWER CODE
 WATER CODE 2-801
 SEWER CODE 2000000

VICINITY MAP
 SCALE: 1"=600'

NUMBER OF LOTS 1
 TYPE OF BUILDING Commercial
 NO. OF W.H.C. 1
 NO. OF S.H.C. 1
 DRAINAGE AREA Patapsco



PROFILE 2
 Horiz: 1"=50'
 Vert: 1"=5'

Sediment Control Measures will be implemented in accordance with Article No. 15 of the Specifications & Site Development Plan SDP-00-112.

REVIEWED FOR HOWARD SOIL CONSERVATION DISTRICT AND MEETS TECHNICAL REQUIREMENT
[Signature]
 SIGNATURE DATE

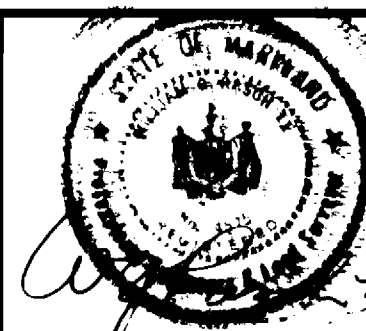
US SOIL CONSERVATION SERVICE

This Development Plan is approved for Soil Erosion and Sediment Control by the Howard Soil Conservation District.

APPROVED:
[Signature] 12/9/85
 HOWARD S.C.D. DATE

DEPARTMENT OF PUBLIC WORKS
 HOWARD COUNTY, MARYLAND

PURDUM & JESCHKE
 ENGINEERS
 1029 N. CALVERT ST.
 BALTIMORE, MARYLAND



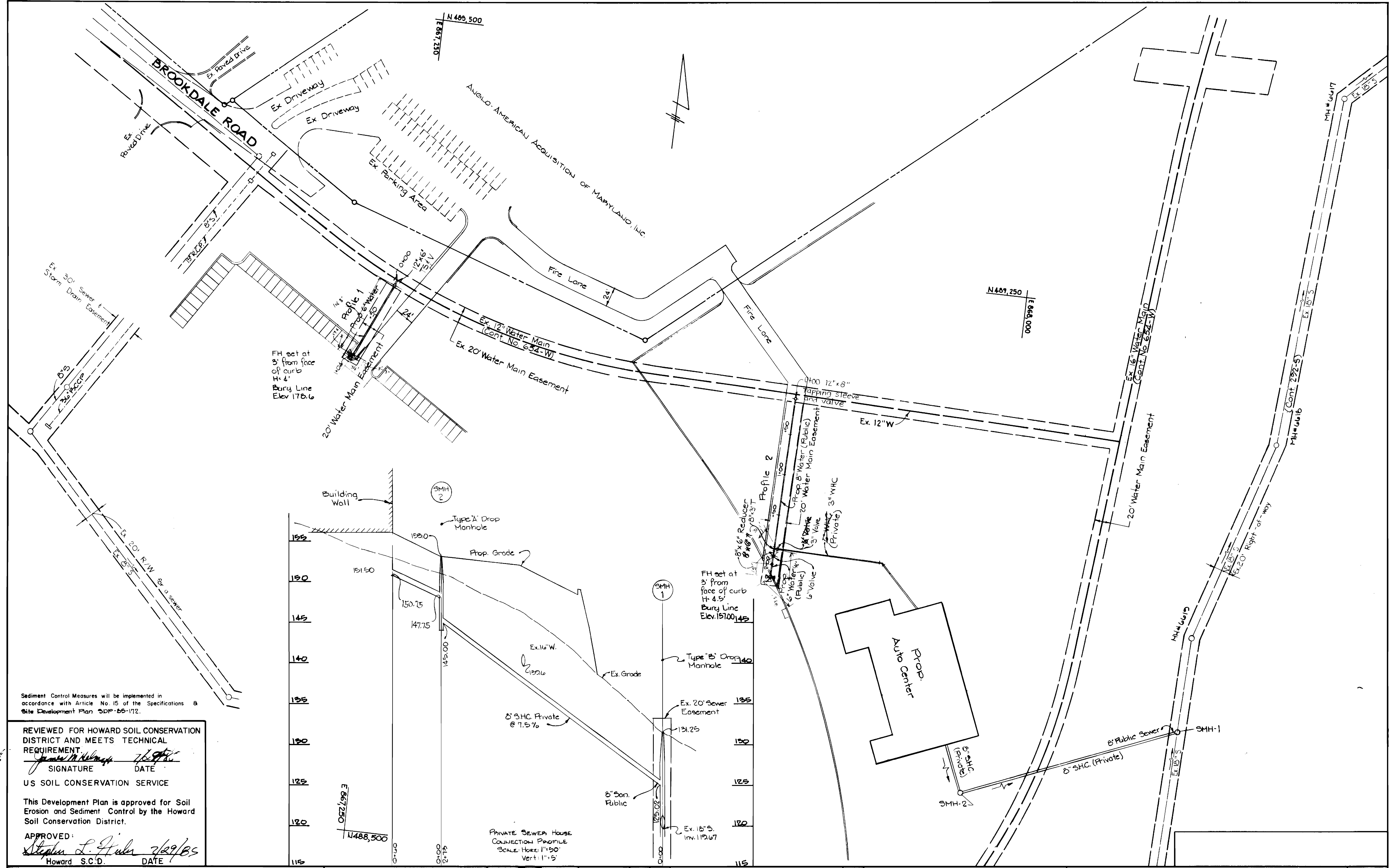
DES:	
DRN:	
CHK:	
DATE:	BY NO. REVISION DATE

WATER MAIN EXTENSION
 LOCATION MAP & PROFILES

ANGLO AMERICAN ACQUISITION OF MD. INC.
 BROOKDALE INDUSTRIAL PARK, PARCEL 116
 FIRST ELECTION DISTRICT HOWARD COUNTY, MARYLAND
 CONTRACT NO. 14-1365-D

SCALE As Noted
 SHEET 1 OF 2

AS BUILT 10/16/86



Sediment Control Measures will be implemented in accordance with Article No. 15 of the Specifications & Site Development Plan SDP-85-172.

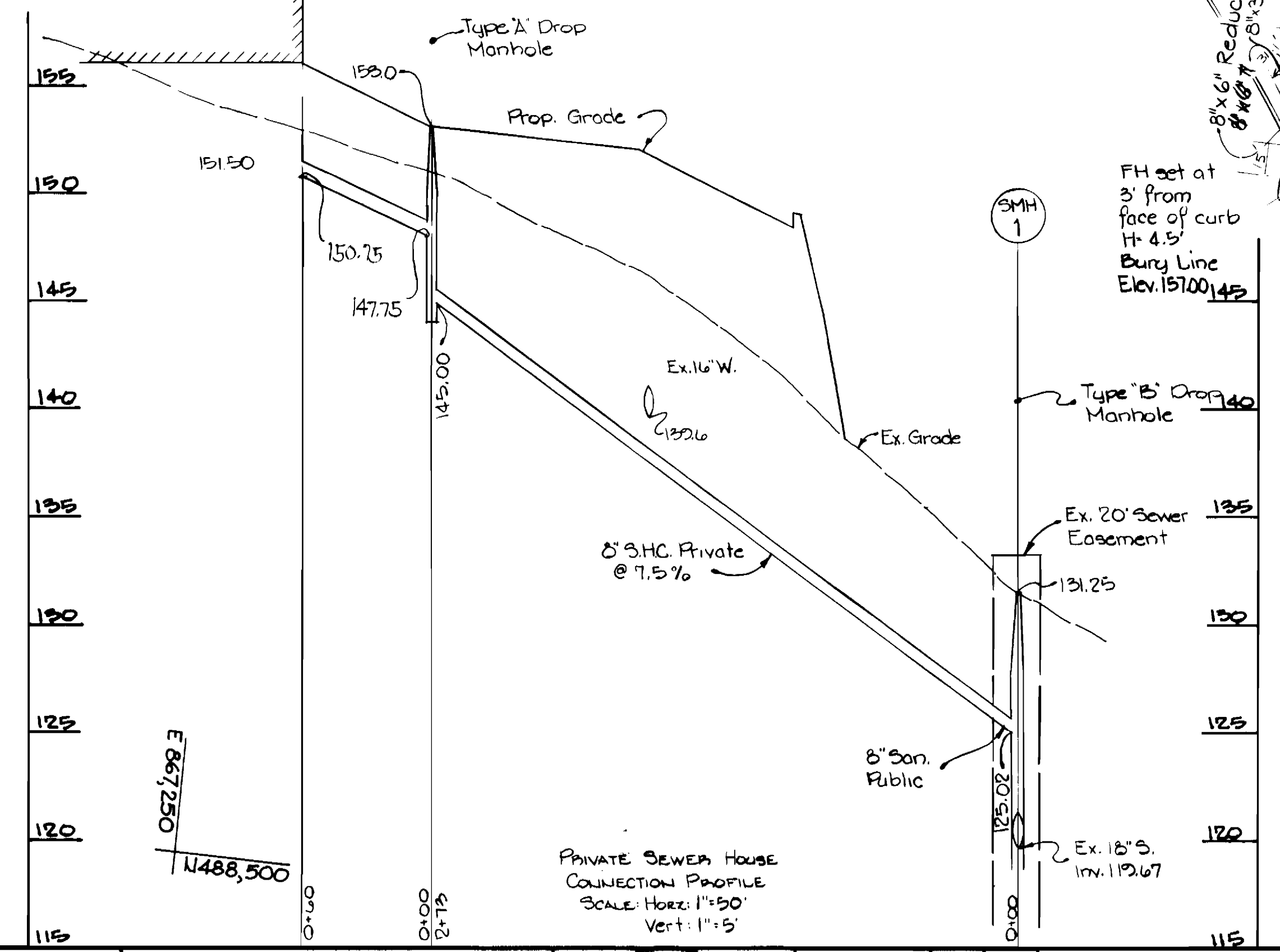
REVIEWED FOR HOWARD SOIL CONSERVATION DISTRICT AND MEETS TECHNICAL REQUIREMENT

[Signature] 7/29/85
SIGNATURE DATE

US SOIL CONSERVATION SERVICE

This Development Plan is approved for Soil Erosion and Sediment Control by the Howard Soil Conservation District.

APPROVED:
[Signature] 7/29/85
Howard S.C.D. DATE



DEPARTMENT OF PUBLIC WORKS HOWARD COUNTY, MARYLAND <i>[Signature]</i> GEN 8-5-85 DIRECTOR OF PUBLIC WORKS DATE <i>[Signature]</i> 7-31-85 CHIEF, BUREAU OF UTILITIES DATE	PURDUM & JESCHKE ENGINEERS 1029 N. CALVERT ST. BALTIMORE, MARYLAND		DES:		WATER MAIN EXTENSION PLAN & PROFILE	ANGLo AMERICAN ACQUISITION OF MD. INC. BROOKDALE INDUSTRIAL PARK, PARCEL 116 FIRST ELECTION DISTRICT HOWARD COUNTY, MARYLAND CONTRACT NO. 14-1565-D	SCALE	1"=50'
			DRN:				DATE	600' SCALE MAP NO 43

AS-BUILT 10/16/86