

DEPARTMENT OF PUBLIC WORKS
BUREAU OF ENGINEERING
GENERAL NOTES

PARTS I, II & III

PART I

- Approximate location of existing mains are shown. The contractor shall take all necessary precautions to protect existing mains and services and maintain uninterrupted supply. Any damage incurred shall be repaired immediately to the satisfaction of the Engineer, at the Contractor's expense.
- All horizontal controls are based on Maryland State Coordinates.
- All vertical controls are based on U. S. G. S Datum.
- All pipe elevations shown are Invert elevations.
- Clear all utilities by a minimum of 6'. Clear all poles by 2'-0" minimum or tunnels required. Any cost incurred to the contractor for tunneling or backing at poles shall be included in unit prices bid for construction of the main.
- For details not shown on the drawings use Howard County Standard Details.
- For materials and construction methods use Howard County Standard Specifications.
- Contractor shall locate existing utilities a minimum of two (2) weeks in advance of construction operations in the vicinity of proposed utilities at this own expense.
- Contractor shall notify the following utilities or agencies at least five (5) working days before starting work shown on these plans:
 - State Highway Administration - 531-9533
 - Baltimore Gas & Electric Company - UNDERGROUND GAS & ELECTRIC DISTRIBUTION Customer Service - 685-0123
 - Engineering - "Damage Control" - 234-5621
 - Chesapeake & Potomac Telephone Company - 725-9976
 - American Telephone & Telegraphy - Cable Location Division - 393-3553
 - Colonial Pipe Company - 795-1390
 - Bureau of Utilities Howard County - 992-2366

- Trees are to be protected from damage to maximum extent. Trees located within the construction strip are not to be removed or damaged by the contractor.
- Contractor shall remove trees, stumps and roots along line of excavation as directed by the Engineer. Payment for such removal shall be included in the unit price bid for construction of the main.
- Place regulation "Men Working" and warning signs as required to comply with Maryland State Highway Administration Manual of Traffic Control for Highway Construction and Maintenance Operations.

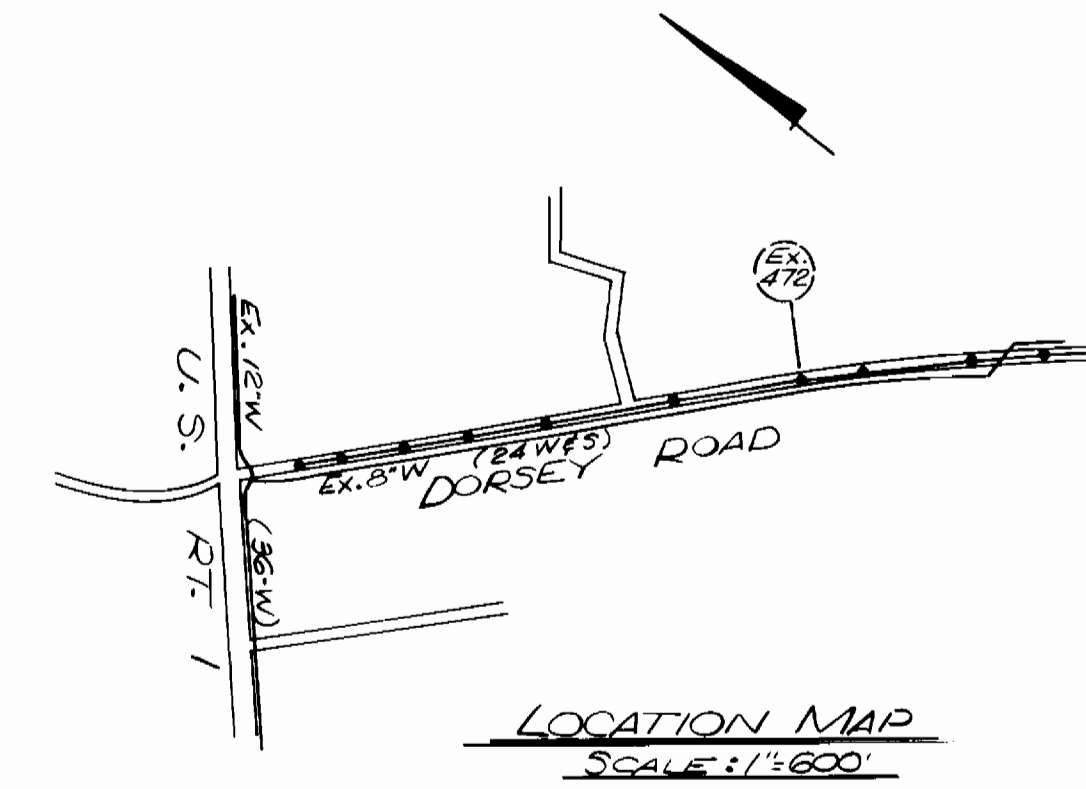
- WATER - PART II
- All water main shall be installed as otherwise noted.
 - Top of all water main shall be a minimum of 3'-0" over all as otherwise noted.
 - Valves adjacent to tees shall be strapped to tees.
 - Block all fittings with concrete.
 - Bury line elevations on fire hydrants shall be set to the elevations shown on the drawing. All fire hydrants shall be strapped and buttressed with concrete in accordance with standard details. Soil around the fire hydrant to be compacted in accordance with Sections 10.03 and 10.08 of the Standard Specifications.
 - All water house connections shall be for an inside meter setting.
 - The contractor shall not operate any water main valves on the existing system.
 - For all copper water house connections, utilize flared type fittings only.

REVIEWED FOR HOWARD S.C.D.
AND MEETS TECHNICAL REQUIREMENTS.

Conner McKeen 7-2-85
U.S. SOIL CONSERVATION SERVICE DATE

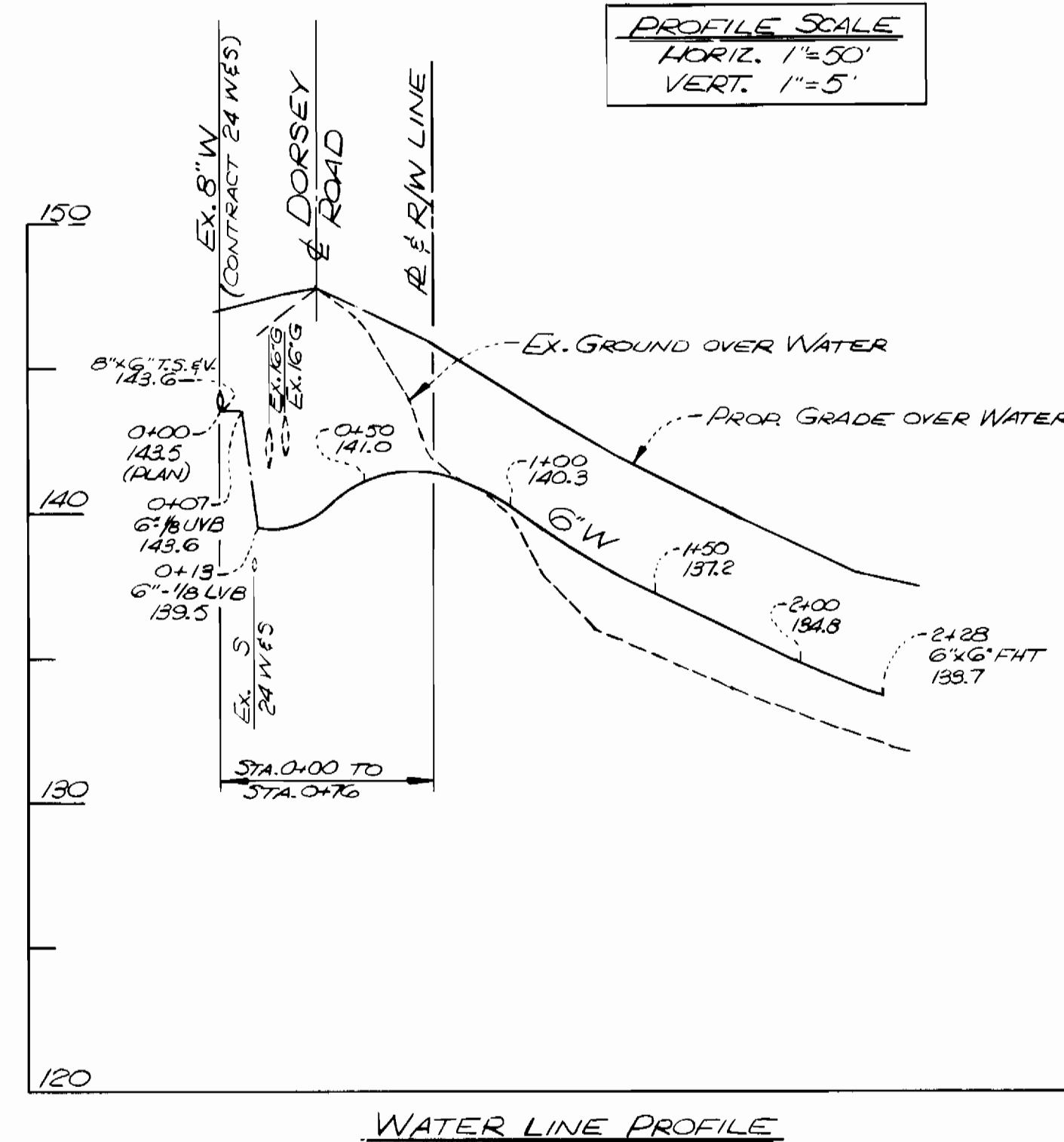
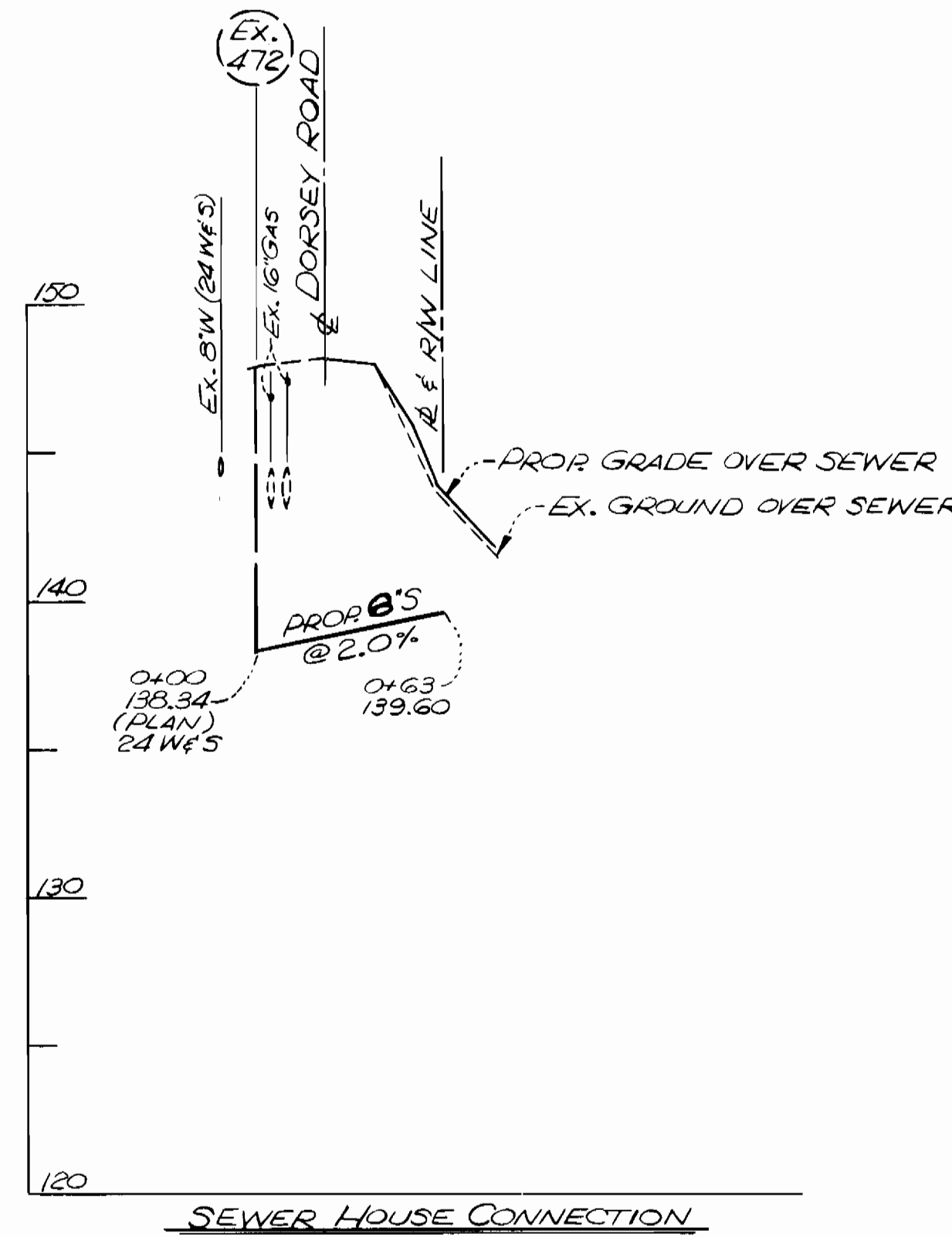
THIS DEVELOPMENT PLAN IS APPROVED FOR SOIL EROSION AND SEDIMENT CONTROL BY THE HOWARD SOIL CONSERVATION DISTRICT.

Howard S.C.D. 7-2-85
HOWARD S.C.D. DATE

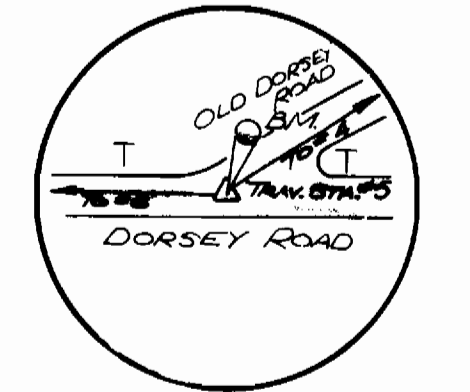
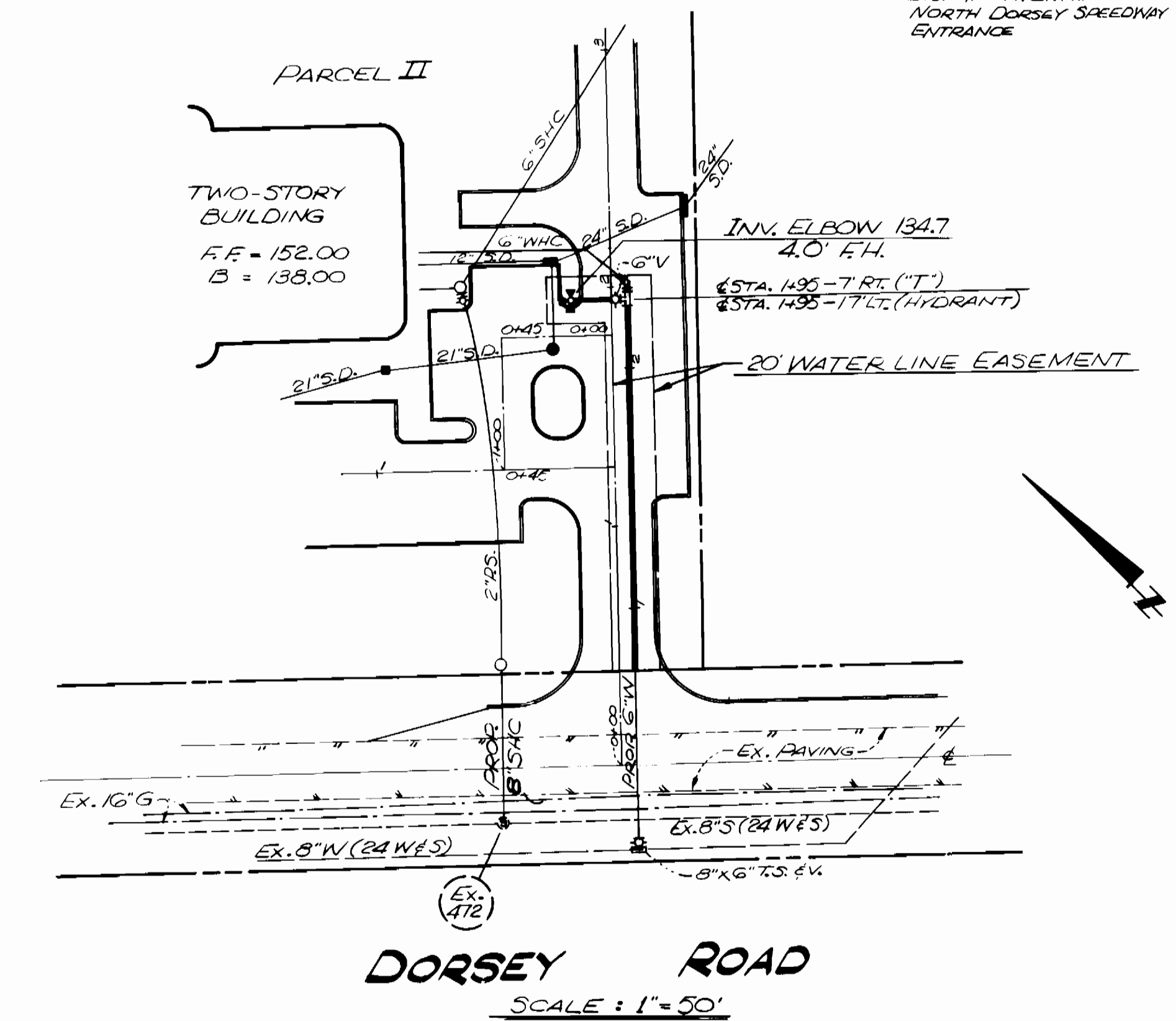


NO. OF LOTS : 1
NO. OF WATER : 1
NO. OF SEWER : 1
DRAINAGE AREA: PATAPSCO
WATER CODE: E 016
SEWER CODE: 2320000

MATERIAL LIST	
ITEM	QUANTITY
6" D.I.R. WATER	248 L.F.
8" D.I.R. SEWER	63 L.F.
FIRE HYDRANT	1



PROFILE SCALE
HORIZ. 1"=50'
VERT. 1"=5'



B.M. ELEV. 151.84
1/2" PENNEY NAIL WITH DISK IN PAVEMENT - NORTH DORSEY SPEEDWAY ENTRANCE

SEDIMENT CONTROL MEASURES FOR THIS CONTRACT WILL BE IMPLEMENTED IN ACCORDANCE WITH ARTICLE 15 OF THE STANDARD SPECIFICATIONS AND S.D.P. 85 - 89 - C.

PUBLIC WATER AND SEWER HOUSE CONNECTION FOR SITE DEVELOPMENT PLAN # SDP-85-154

DEPARTMENT OF PUBLIC WORKS HOWARD COUNTY, MARYLAND DIRECTOR OF PUBLIC WORKS DATE: 7-2-85 CHIEF, BUREAU OF UTILITIES	ENGINEERS ARCHITECTS PLANNERS SURVEYORS GREENHORNE AND O'MARA, INC. *2 RESEARCH PLACE ROCKVILLE, MARYLAND 20850 (301) 948 - 0900	DES: RHM			PLAN FOR WATER MAIN & SEWER HOUSE CONNECTION	DORSEY BUSINESS CENTER PARCEL II ELECTION DISTRICT #1 HOWARD CO., MD. CONTRACT NO. 14-1383 D	SCALE AS SHOWN SHEET 1 OF 1
		DRN: JDP					
		CHK: EDB					
		DATE: 6/85	BY: NO.	REVISION			