

Benchmarks

B.M. #1
Concrete monument found
Elev. = 219.00

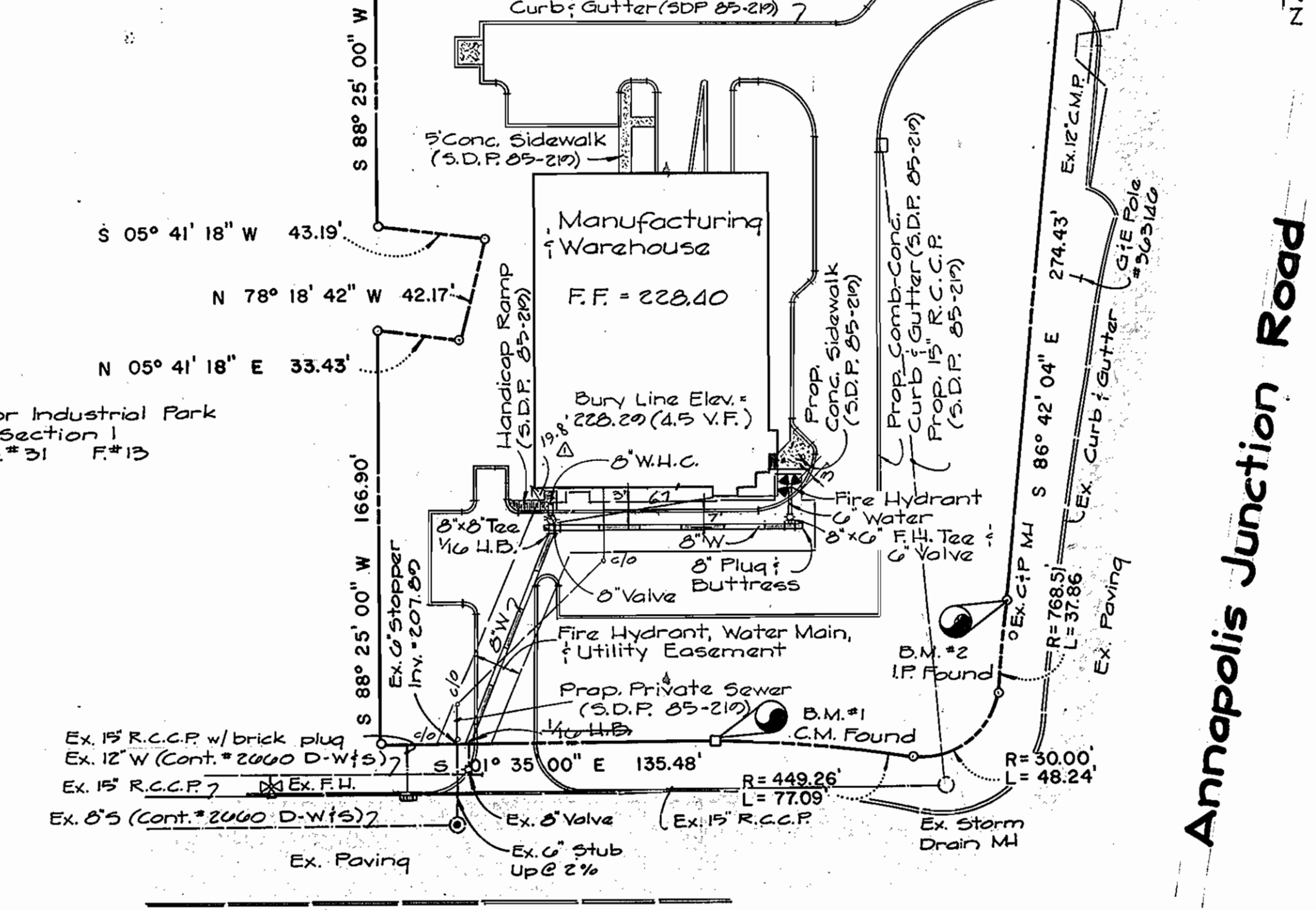
B.M. #2
Iron Pipe found.
Elev. = 225.45

Elev. = 219.00
Elev. = 225.45

Corridor Industrial Park
Section I
P.B. #31 F.#13

E 853,500

N 474,000

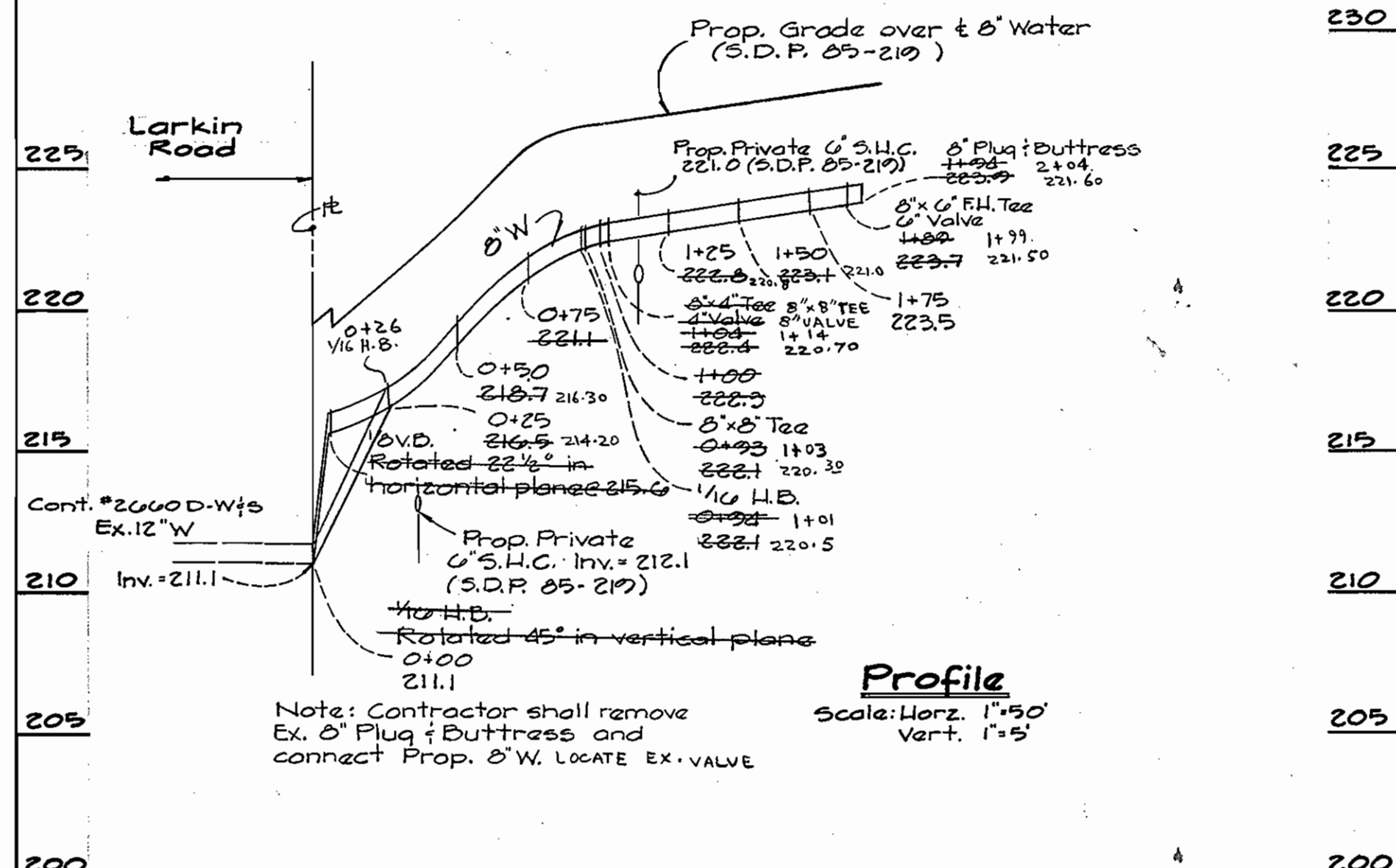


Annapolis Junction Road

Larkin Road

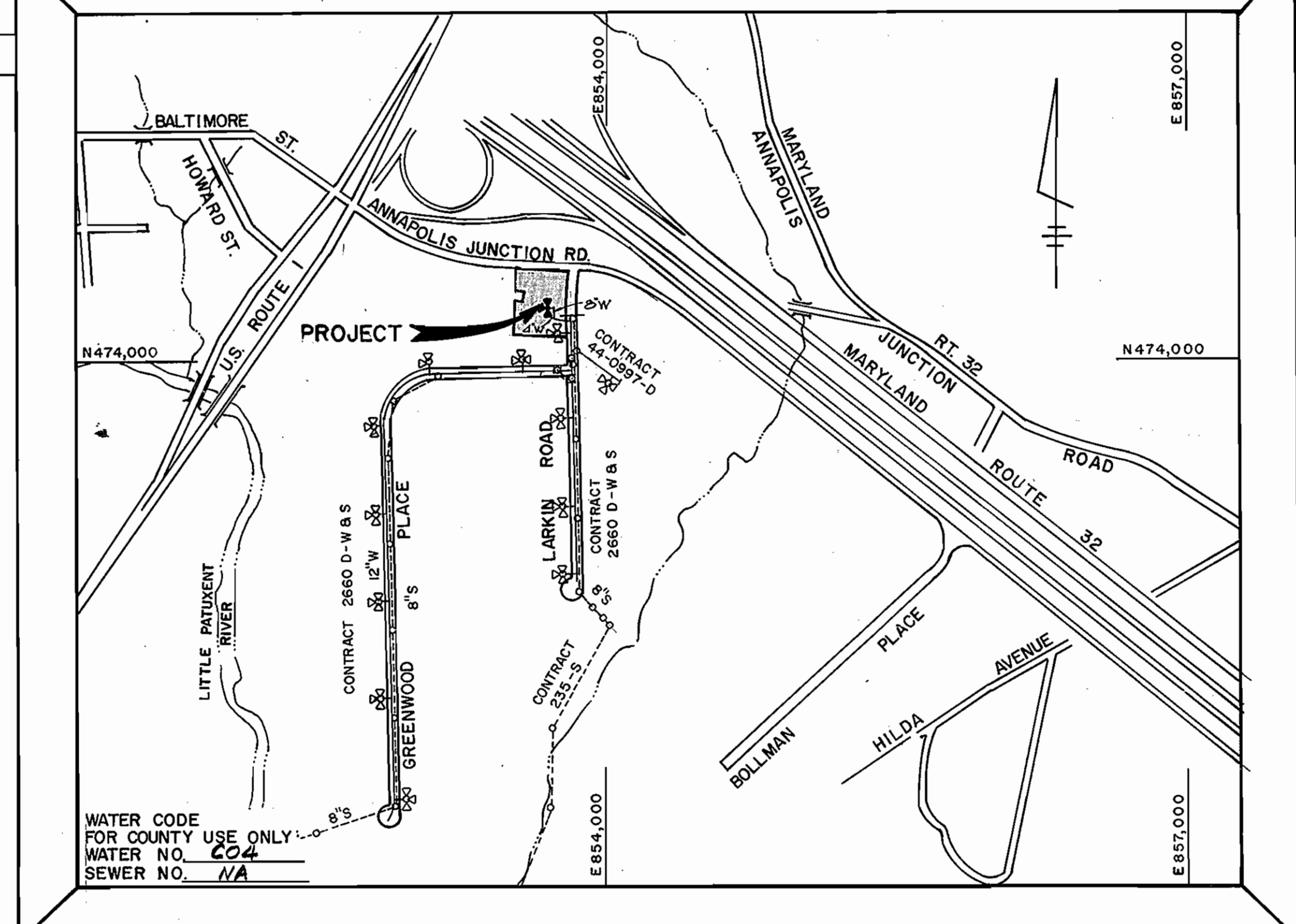
Plan
Scale: 1"=50'

N 474,000
E 854,000



NOTE: TIE IN MADE AT 0+13

Profile
Scale: Horz. 1"=50'
Vert. 1"=5'



TYPE OF BUILDING: Manufacturing
NUMBER OF LOTS: 1
NO. OF WATER HOUSE CONN.: 1
NO. OF SEWER HOUSE CONN.: 0
DRAINAGE AREA: Little Patuxent

VICINITY MAP
SCALE: 1"=600'

GENERAL NOTES

- APPROXIMATE LOCATION OF EXISTING MAINS ARE SHOWN. THE CONTRACTOR SHALL TAKE ALL NECESSARY PRECAUTIONS TO PROTECT EXISTING MAINS AND SERVICES AND MAINTAIN UNINTERRUPTED SUPPLY. ANY DAMAGE INCURRED SHALL BE REPAIRED IMMEDIATELY TO THE SATISFACTION OF THE ENGINEER AT THE CONTRACTOR'S EXPENSE.
- ALL HORIZONTAL CONTROLS ARE BASED ON MARYLAND STATE COORDINATES.
- ALL VERTICAL CONTROLS ARE BASED ON U.S.G.S. DATA.
- ALL PIPE ELEVATIONS SHOWN ARE INVERT ELEVATIONS.
- CLEAR ALL UTILITIES BY A MINIMUM OF 6". CLEAR ALL POLES BY 2'-0" MINIMUM OR TUNNEL AS REQUIRED. THE OWNER HAS CONTACTED THE UTILITIES COMPANIES AND HAS MADE ARRANGEMENTS FOR BRACING OF POLES AS SHOWN ON THE DRAWINGS. IN THE EVENT THE CONTRACTOR'S WORK REQUIRES THE BRACING OF ADDITIONAL POLES, ANY COST INCURRED BY THE OWNER FOR THE BRACING OF ADDITIONAL POLES OR DAMAGES SHALL BE DEDUCTED FROM MONEY OWED THE CONTRACTOR. THE CONTRACTOR SHALL COORDINATE WITH THE UTILITY COMPANIES TO SCHEDULE THE BRACING OF THE POLES.
- FOR DETAILS NOT SHOWN ON THE DRAWINGS, AND FOR MATERIALS AND CONSTRUCTION METHODS, USE HOWARD COUNTY DESIGN MANUAL, VOLUME IV, STANDARD SPECIFICATIONS AND DETAILS FOR CONSTRUCTION. THE CONTRACTOR SHALL HAVE A COPY OF VOLUME IV ON THE JOB.
- WHERE TEST PITS HAVE BEEN MADE ON EXISTING UTILITIES, THEY ARE NOTED BY THE SYMBOL \square AT THE LOCATION OF THE TEST PIT. A NOTE OR NOTES CONTAINING THE RESULTS OF THE TEST PIT OR PITS IS INCLUDED ON THE DRAWINGS. EXISTING UTILITIES IN THE VICINITY OF THE PROPOSED WORK FOR WHICH TEST PITS HAVE NOT BEEN DUG SHALL BE LOCATED BY THE CONTRACTOR TWO WEEKS IN ADVANCE OF CONSTRUCTION OPERATIONS AT HIS OWN EXPENSE.
- CONTRACTOR SHALL NOTIFY THE FOLLOWING UTILITIES OR AGENCIES AT LEAST FIVE WORKING DAYS BEFORE STARTING WORK SHOWN ON THESE PLANS:
BALTIMORE GAS AND ELECTRIC CO. - CONTRACTOR'S SERVICES - (561-2585)
BALTIMORE GAS AND ELECTRIC CO. - UNDER GROUND DAMAGE CONTROL - (234-5621)
BALTIMORE GAS AND ELECTRIC CO. - TROUBLE SHOOTING - (298-9013)
"MISS UTILITY" - (1-559-0100)
BUREAU OF UTILITIES, HOWARD COUNTY DEPARTMENT OF PUBLIC WORKS - (992-2366)
- TREES AND SHRUBS ARE TO BE PROTECTED FROM DAMAGE TO MAXIMUM EXTENT. TREES AND SHRUBS LOCATED WITHIN THE CONSTRUCTION STRIP ARE NOT TO BE REMOVED OR DAMAGED BY THE CONTRACTOR.
- CONTRACTOR SHALL REMOVE TREES, STUMPS AND ROOTS ALONG LINE OF EXCAVATION. PAYMENT FOR SUCH REMOVAL SHALL BE INCLUDED IN THE UNIT PRICE BID FOR CONSTRUCTION OF THE MAIN.
- ALL WATER MAINS TO BE 21.0 UNLESS OTHERWISE NOTED.
- TOPS OF ALL WATER MAINS TO HAVE A MINIMUM OF 3-1/2 COVER UNLESS OTHERWISE NOTED.
- VALVES ADJACENT TO TEES SHALL BE STRAPPED TO TEES.
- ALL FITTINGS SHALL BE BUTTRESSED OR ANCHORED WITH CONCRETE IN ACCORDANCE WITH THE STANDARD DETAILS UNLESS OTHERWISE PROVIDED FOR ON THE DRAWINGS.
- FIRE HYDRANTS SHALL BE SET TO THE BURY LINE ELEVATIONS SHOWN ON THE DRAWINGS. ALL FIRE HYDRANTS SHALL BE STRAPPED AND BUTTRESSED WITH CONCRETE IN ACCORDANCE WITH STANDARD DETAILS. SOIL AROUND THE FIRE HYDRANT SHALL BE COMPACTED IN ACCORDANCE WITH SECTION 1003 THE STANDARD SPECIFICATIONS.
- THE CONTRACTOR SHALL NOT OPERATE ANY WATER MAIN VALVES ON THE EXISTING WATER SYSTEM.
- ALL WATER HOUSE CONNECTIONS SHALL BE FOR INSIDE METER SETTINGS UNLESS OTHERWISE SHOWN.

QUANTITIES			
ITEM	EST'D	AS-BUILT	SUPPLIER
8" WATER	202 L.F.	201 L.F.	A & P WATER AND
6" WATER	15 L.F.	15 L.F.	SEWER SUPPLIES
F.H. 8" VAL	1 Each	1 EACH	N.C.
8" VALVE	1 Each	1 EACH	↓

SEDIMENT CONTROL MEASURES FOR THIS CONTRACT WILL BE IMPLEMENTED IN ACCORDANCE WITH SECTION 15 OF THE HOWARD COUNTY DESIGN MANUAL AND STANDARDS AND SPECIFICATIONS FOR SOIL EROSION AND SEDIMENT CONTROL IN DEVELOPING AREAS AND ALSO AS SHOWN ON THE GRADING AND SEDIMENT CONTROL PLAN SDP-85-210
REVIEW FOR HOWARD COUNTY SOIL CONSERVATION DISTRICT AND MEETS TECHNICAL REQUIREMENTS.

Stephen R. Shultz 7-17-85
US SOIL CONSERVATION SERVICE DATE

THIS DEVELOPMENT PLAN IS APPROVED FOR EROSION AND SEDIMENT CONTROL BY HOWARD SOIL CONSERVATION DISTRICT.

APPROVED:

Stephen R. Shultz 7/17/85
HOWARD SOIL CONSERVATION DISTRICT DATE

CONTRACT NO. 44-1379-D
CORRIDOR INDUSTRIAL PARK
SECTION I - PARCEL 'A'
WATER EXTENSION
HOWARD COUNTY, MARYLAND

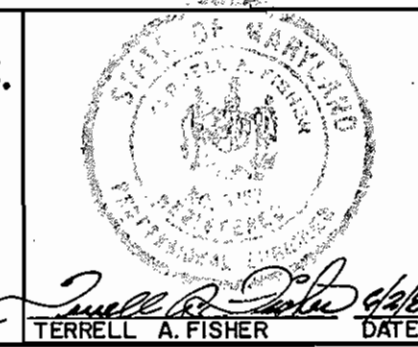
DEPARTMENT OF PUBLIC WORKS
HOWARD COUNTY, MARYLAND

John F. Womack 7-16-85
DIRECTOR OF PUBLIC WORKS DATE

Deborah J. O'Connell 7/16/85
CHIEF, BUREAU OF ENGINEERING DATE

FISHER, COLLINS AND CARTER, INC.
CIVIL ENGINEERS AND LAND SURVEYORS

8388 COURT AVENUE
ELLCOTT CITY, MARYLAND 21043
461-2855



DES:	
DRN:	
CHK:	
DATE:	
BY	NO.
REVISION	

**PLAN AND PROFILE
WATER MAINS**

600' SCALE MAP NO. 47 BLOCK NO.

WATER MAIN EXTENSION
CORRIDOR INDUSTRIAL PARK
SECTION I - PARCEL 'A'
CONTRACT NO. 44-1379-D
SIXTH ELECTION DISTRICT
HOWARD COUNTY, MARYLAND

SCALE AS SHOWN

SHEET 1 OF 1