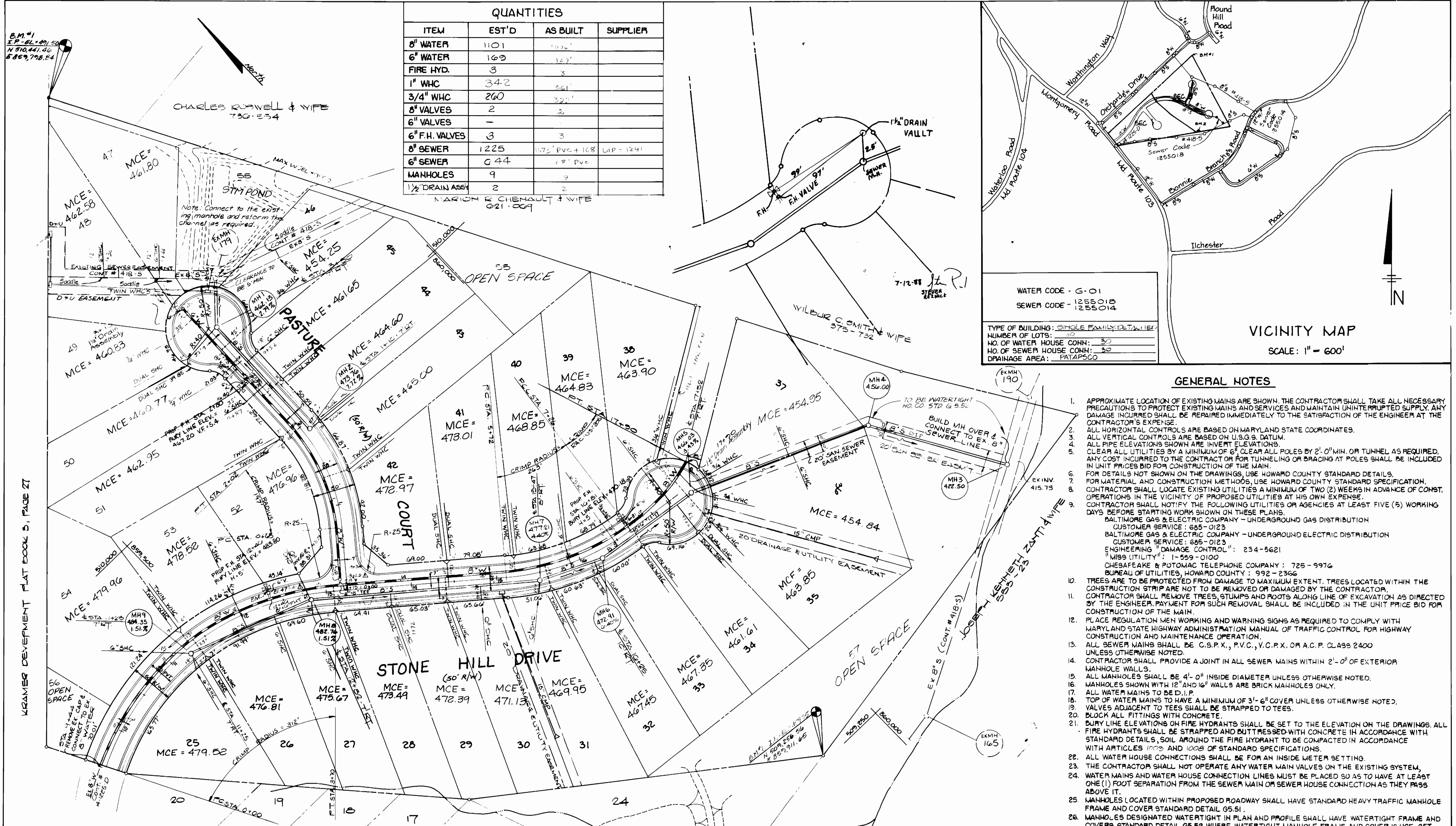


QUANTITIES			
ITEM	EST'D	AS BUILT	SUPPLIER
8" WATER	1101	1036'	
6" WATER	169	123'	
FIRE HYD.	3	3	
1" WHC	342	361'	
3/4" WHC	260	322'	
8" VALVES	2	2	
6" VALVES	-	-	
6" F.H. VALVES	3	3	
8" SEWER	1225	1172' PVC + 108' WIP = 1281'	
6" SEWER	644	629' PVC	
MANHOLES	9	9	
1/2" DRAIN ASSY	2	2	



WATER CODE - G-01  
SEWER CODE - 1255018  
1255014

TYPE OF BUILDING: SINGLE FAMILY DETACHED  
NUMBER OF LOTS: 20  
NO. OF WATER HOUSE CONN.: 30  
NO. OF SEWER HOUSE CONN.: 30  
DRAINAGE AREA: PATAPSCO

VICINITY MAP  
SCALE: 1" = 600'

**GENERAL NOTES**

- APPROXIMATE LOCATION OF EXISTING MAINS ARE SHOWN. THE CONTRACTOR SHALL TAKE ALL NECESSARY PRECAUTIONS TO PROTECT EXISTING MAINS AND SERVICES AND MAINTAIN UNINTERRUPTED SUPPLY. ANY DAMAGE INCURRED SHALL BE REPAIRED IMMEDIATELY TO THE SATISFACTION OF THE ENGINEER AT THE CONTRACTOR'S EXPENSE.
- ALL HORIZONTAL CONTROLS ARE BASED ON MARYLAND STATE COORDINATES.
- ALL VERTICAL CONTROLS ARE BASED ON U.S.G.S. DATUM.
- ALL PIPE ELEVATIONS SHOWN ARE INVERT ELEVATIONS.
- CLEAR ALL UTILITIES BY A MINIMUM OF 6" CLEAR ALL POLES BY 2'-0" MIN. OR TUNNEL AS REQUIRED. ANY COST INCURRED TO THE CONTRACTOR FOR TUNNELING OR BRACING AT POLES SHALL BE INCLUDED IN UNIT PRICES BID FOR CONSTRUCTION OF THE MAIN.
- FOR DETAILS NOT SHOWN ON THE DRAWINGS, USE HOWARD COUNTY STANDARD DETAILS.
- FOR MATERIAL AND CONSTRUCTION METHODS, USE HOWARD COUNTY STANDARD SPECIFICATION.
- CONTRACTOR SHALL LOCATE EXISTING UTILITIES A MINIMUM OF TWO (2) WEEKS IN ADVANCE OF CONSTRUCTION IN THE VICINITY OF PROPOSED UTILITIES AT HIS OWN EXPENSE.
- CONTRACTOR SHALL NOTIFY THE FOLLOWING UTILITIES OR AGENCIES AT LEAST FIVE (5) WORKING DAYS BEFORE STARTING WORK SHOWN ON THESE PLANS.  
BALTIMORE GAS & ELECTRIC COMPANY - UNDERGROUND GAS DISTRIBUTION  
CUSTOMER SERVICE: 685-0123  
BALTIMORE GAS & ELECTRIC COMPANY - UNDERGROUND ELECTRIC DISTRIBUTION  
CUSTOMER SERVICE: 685-0123  
ENGINEERING "DAMAGE CONTROL": 234-5621  
"MISS UTILITY": 1-559-0100  
CHESAPEAKE & POTOMAC TELEPHONE COMPANY: 725-9976  
BUREAU OF UTILITIES, HOWARD COUNTY: 992-2366
- TREES ARE TO BE PROTECTED FROM DAMAGE TO MAXIMUM EXTENT. TREES LOCATED WITHIN THE CONSTRUCTION STRIP ARE NOT TO BE REMOVED OR DAMAGED BY THE CONTRACTOR.
- CONTRACTOR SHALL REMOVE TREES, STUMPS AND ROOTS ALONG LINE OF EXCAVATION AS DIRECTED BY THE ENGINEER. PAYMENT FOR SUCH REMOVAL SHALL BE INCLUDED IN THE UNIT PRICE BID FOR CONSTRUCTION OF THE MAIN.
- PLACE REGULATION MEN WORKING AND WARNING SIGNS AS REQUIRED TO COMPLY WITH MARYLAND AND STATE HIGHWAY ADMINISTRATION MANUAL OF TRAFFIC CONTROL FOR HIGHWAY CONSTRUCTION AND MAINTENANCE OPERATION.
- ALL SEWER MAINS SHALL BE C.S.P.X., P.V.C., V.C.P.X. OR A.C.P. CLASS 2400 UNLESS OTHERWISE NOTED.
- CONTRACTOR SHALL PROVIDE A JOINT IN ALL SEWER MAINS WITHIN 2'-0" OF EXTERIOR MANHOLE WALLS.
- ALL MANHOLES SHALL BE 4'-0" INSIDE DIAMETER UNLESS OTHERWISE NOTED.
- MANHOLES SHOWN WITH 12" AND 16" WALLS ARE BRICK MANHOLES ONLY.
- ALL WATER MAINS TO BE D.I.P.
- TOP OF WATER MAINS TO HAVE A MINIMUM OF 3'-6" COVER UNLESS OTHERWISE NOTED.
- VALVES ADJACENT TO TEES SHALL BE STRAPPED TO TEES.
- BLOCK ALL FITTINGS WITH CONCRETE.
- BURY LINE ELEVATIONS ON FIRE HYDRANTS SHALL BE SET TO THE ELEVATION ON THE DRAWINGS. ALL FIRE HYDRANTS SHALL BE STRAPPED AND BUTTRESSED WITH CONCRETE IN ACCORDANCE WITH STANDARD DETAILS, SOIL AROUND THE FIRE HYDRANT TO BE COMPACTED IN ACCORDANCE WITH ARTICLES 1003 AND 1008 OF STANDARD SPECIFICATIONS.
- ALL WATER HOUSE CONNECTIONS SHALL BE FOR AN INSIDE METER SETTING.
- THE CONTRACTOR SHALL NOT OPERATE ANY WATER MAIN VALVES ON THE EXISTING SYSTEM.
- WATER MAINS AND WATER HOUSE CONNECTION LINES MUST BE PLACED SO AS TO HAVE AT LEAST ONE (1) FOOT SEPARATION FROM THE SEWER MAIN OR SEWER HOUSE CONNECTION AS THEY PASS ABOVE IT.
- MANHOLES LOCATED WITHIN PROPOSED ROADWAY SHALL HAVE STANDARD HEAVY TRAFFIC MANHOLE FRAME AND COVER STANDARD DETAIL G5.51.
- MANHOLES DESIGNATED WATERTIGHT IN PLAN AND PROFILE SHALL HAVE WATERTIGHT FRAME AND COVERS, STANDARD DETAIL G5.52 WHERE WATERTIGHT MANHOLE FRAME AND COVER IS USE, SET TOP OF FRAME 1'-6" ABOVE FINISHED GRADE.
- FOR ALL COPPER WATER HOUSE CONNECTIONS UTILIZE FLARED TYPE FITTINGS ONLY.

SEDIMENT CONTROL MEASURES FOR THIS CONTRACT WILL BE IMPLEMENTED IN ACCORDANCE WITH ARTICLE 15 OF THESE SPECIFICATIONS AND ALSO AS SHOWN ON THE GRADING AND SEDIMENT CONTROL PLAN. F-83-14-3

THIS DEVELOPMENT PLAN IS APPROVED FOR EROSION AND SEDIMENT CONTROL BY HOWARD SOIL CONSERVATION DISTRICT.

APPROVED: *Stephen J. Fuler* 9/27/85  
HOWARD SOIL CONSERVATION DISTRICT

REVIEW FOR HOWARD COUNTY SOIL CONSERVATION DISTRICT AND MEETS TECHNICAL REQUIREMENTS.

APPROVED: *James M. Helm* 9-27-85  
U.S. SOIL CONSERVATION SERVICE

DEPARTMENT OF PUBLIC WORKS  
HOWARD COUNTY, MARYLAND

KIDDE CONSULTANTS, INC.  
ENGINEERS, PLANNERS & SURVEYORS  
8101 SANDY SPRING ROAD/SUITE 101  
LAUREL, MD. 20707  
(301) / 792-8086

DES: JNF  
DRN: BJW  
CHK: MJF  
DATE: 4-3-85

REVISION

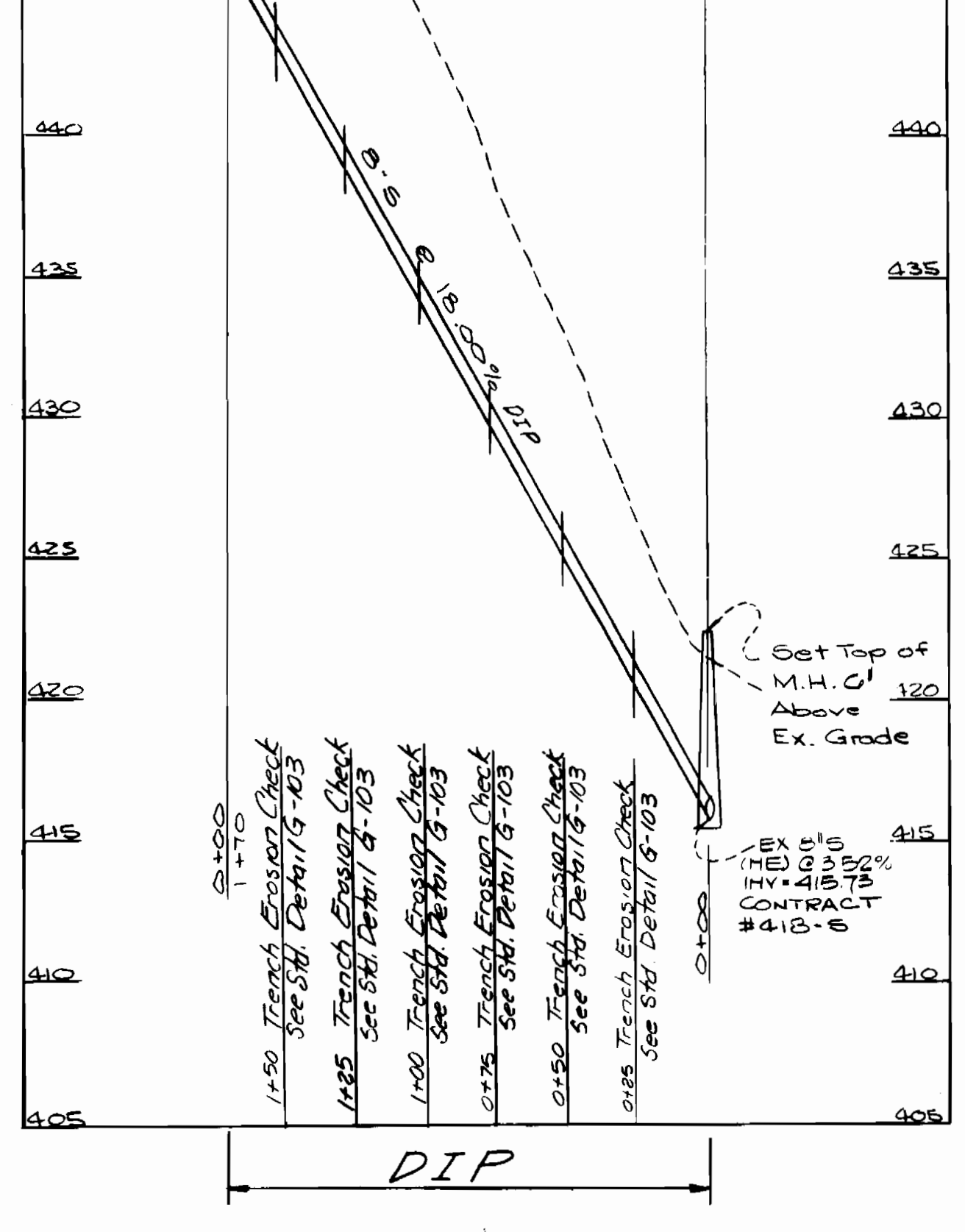
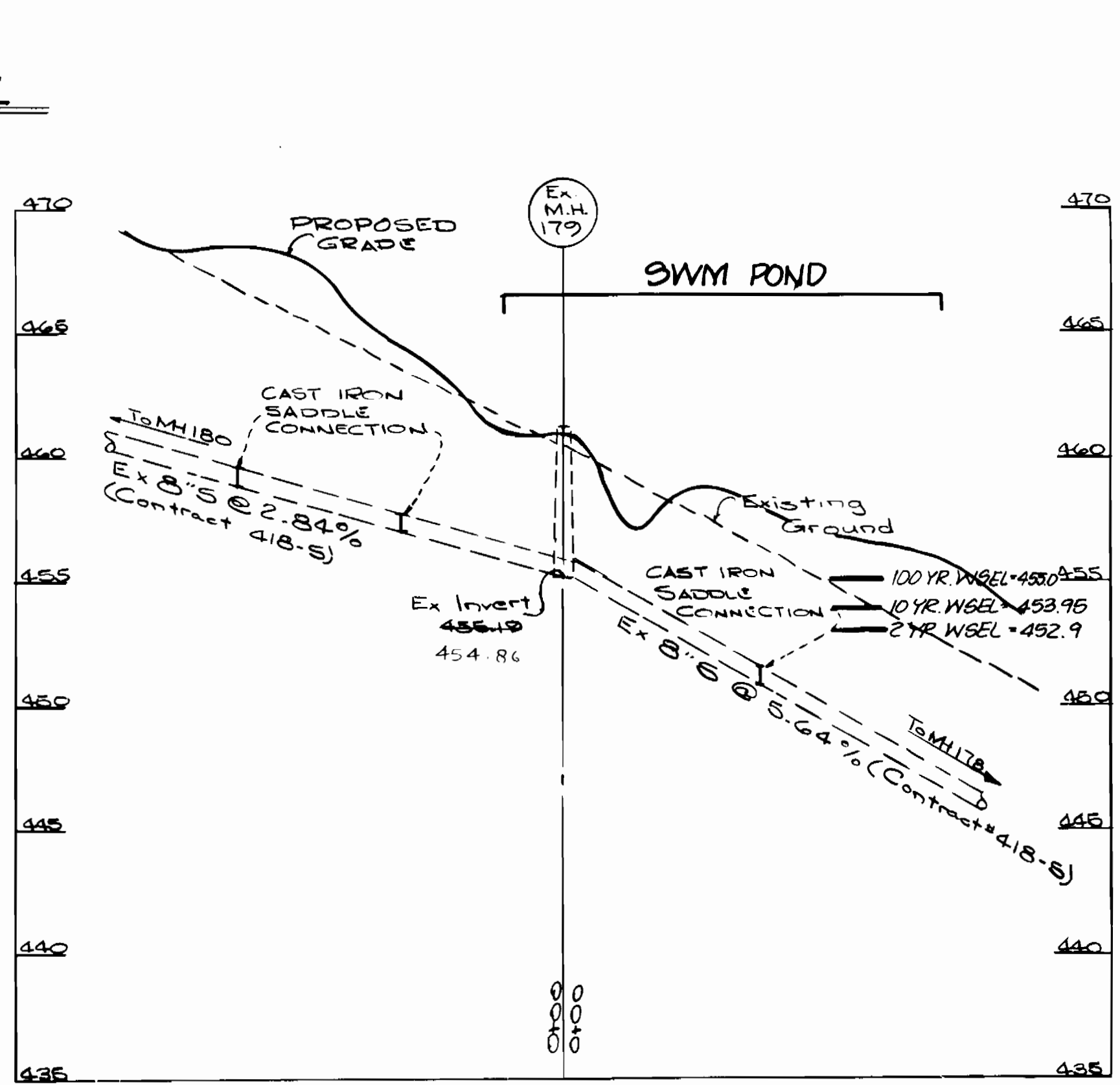
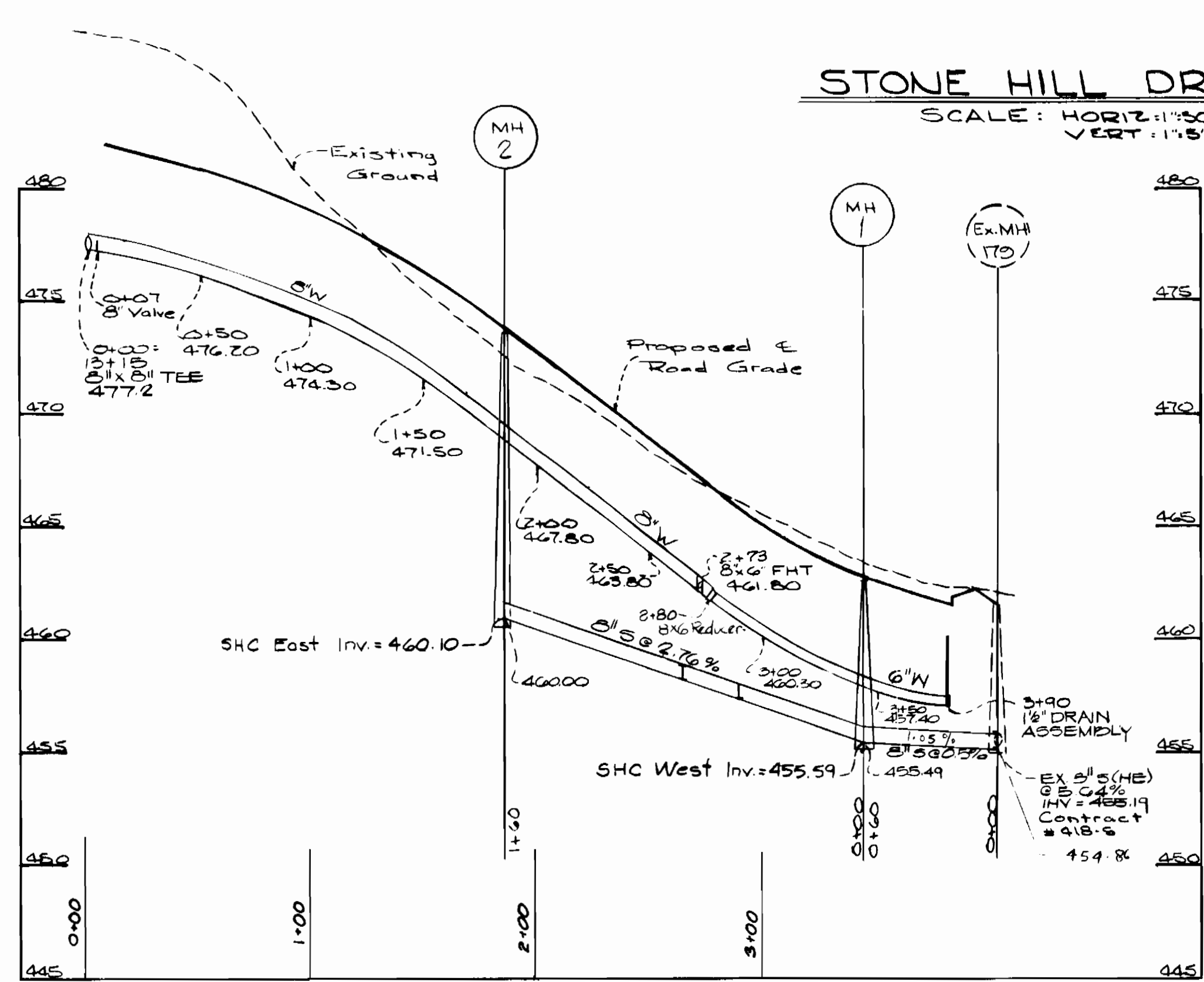
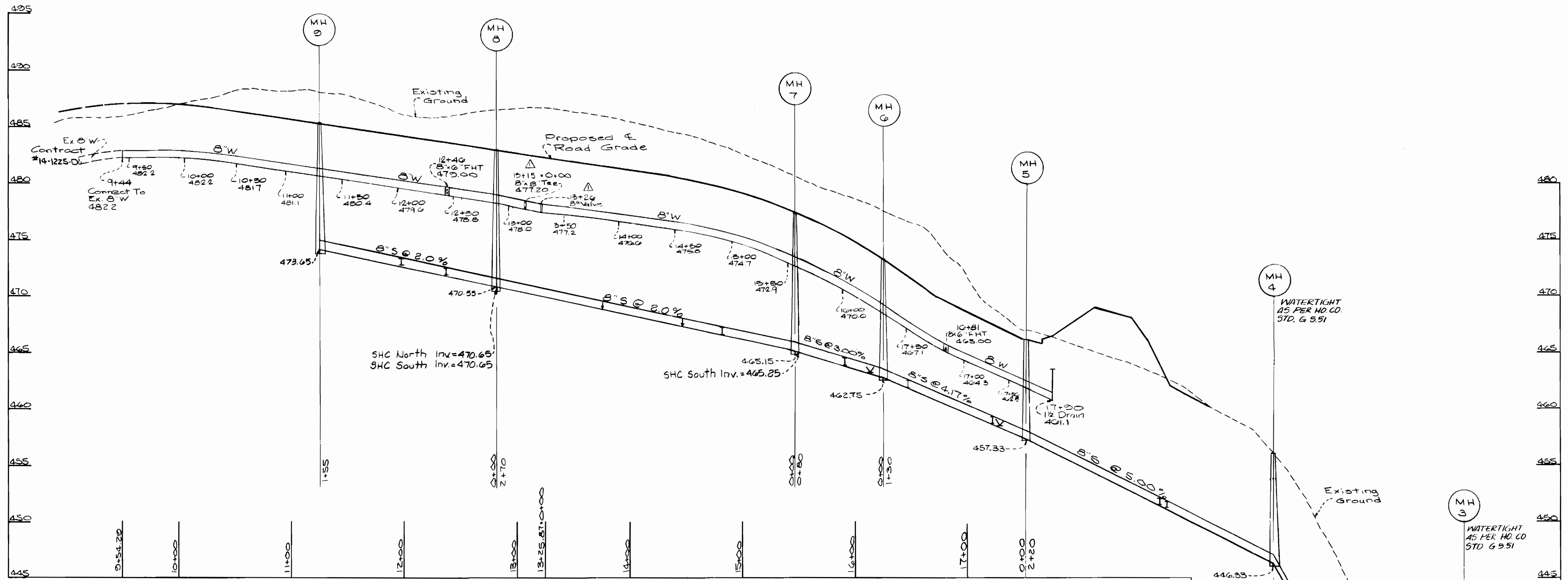
PLAN  
WATER AND SEWER MAINS

600' SCALE MAP NO. 31 BLOCK NO. 14

STONE HILL FARM  
SECTION 2 AREA 1  
CONTRACT NO. 14-1378-D  
SECOND ELECTION DISTRICT  
HOWARD COUNTY, MARYLAND

SCALE AS SHOWN  
SHEET 1 OF 2

SEWER HOUSE CONNECTIONS INVERT ELEV'S @ PROPLINES		
STATION	LOT	INVERT
EX. MH. 179	TO	EX. MH. 180
0+66 RIGHT	47	457.26
1+30 RIGHT	48	459.08
EX. MH. 179	TO	EX. MH. 178
0+78 RIGHT	46	450.92
MH1	TO	MH2
0+55 LEFT	45	457.37
0+88 RIGHT	51	458.67
1+60 LEFT	43.44	460.30
MH4	TO	MH5
0+98 LEFT	36	451.28
1+00 RIGHT	37	451.53
MH5	TO	MH6
0+22 LEFT	35.34	459.11
0+30 RIGHT	38	459.70
1+07 RIGHT	39	460.11
MH6	TO	MH7
0+10 LEFT	32.33	463.05
0+54 RIGHT	40	464.51
MH7	TO	MH8
0+00 LEFT	31	465.45
0+70 LEFT	30	466.85
1+07 RIGHT	41.42	468.47
1+76 LEFT	28.29	468.99
MH8	TO	MH9
0+00 LEFT	27	470.95
0+00 RIGHT	28	471.29
0+45 LEFT	26	472.67
0+83 RIGHT	53	474.36
1+55 LEFT	25	475.32
1+55 RIGHT	54	475.86
MH179	TO	MH1
0+00 RIGHT	49.50	456.49



PASTURE COURT  
SCALE: HORIZ. 1"=50'  
VERT. 1"=5'

EXISTING SEWER  
AT PASTURE COURT  
SCALE: HORIZ. 1"=50'  
VERT. 1"=5'

CONTRACT NO. 1378-D  
SECTION 2 AREA 1  
WATER AND SEWER EXTENSION  
HOWARD COUNTY, MARYLAND

DEPARTMENT OF PUBLIC WORKS  
HOWARD COUNTY, MARYLAND

*[Signature]*  
DIRECTOR OF PUBLIC WORKS

*[Signature]*  
CHIEF, BUREAU OF UTILITIES

DATE: 10-2-85

KIDDE CONSULTANTS, INC.  
ENGINEERS, PLANNERS & SURVEYORS

8101 SANDY SPRING ROAD/SUITE 304  
LAUREL, MD 20707  
(301) / 792-8086

*[Signature]*  
Project Mgr

DES: JNF	JR	Δ	Valve EL., Valve + Tee Stationing	11/14/83
DRN: RC				
CHK: MJP				
DATE: 4-3-85	BY	NO.	REVISION	DATE

PROFILE  
WATER AND SEWER MAINS

600' SCALE MAP NO. 31 BLOCK NO. 14

STONE HILL FARM  
SECTION 2 AREA 1  
CONTRACT NO. 14-1378-D  
SECOND ELECTION DISTRICT  
HOWARD COUNTY, MARYLAND

SCALE AS SHOWN  
SHEET 2 OF 2

AS-BUILT  
JUNE 19, 1984

03-17-2/2