

Benchmarks
 D.M.#1 Elev. = 485.00

Railroad spike in B.A. & E. Pole #184360

Stabilization Notes
 Following initial soil disturbance or redistribution, permanent or temporary stabilization shall be completed within: 1) 7 calendar days for all perimeter sediment control structures, dikes, swales, ditches, perimeter slopes; all slopes greater than 3:1. 2) 14 days as to all other disturbed or graded areas on the project site.

Sediment Control measures for this contract will be implemented in accordance with Article 15 of the Howard County Design Manual and Standards & Specifications for Soil Erosion; Sediment Control in Developing Areas and also as shown on the Grading & Sediment Control Plan F-85-159.

Review for Howard County Soil Conservation District and meets Technical Requirements.

James M. Belmont 7/18/85
 U.S. Soil Conservation Service Date

This Development Plan is approved for Erosion and Sediment Control by Howard Soil Conservation District.

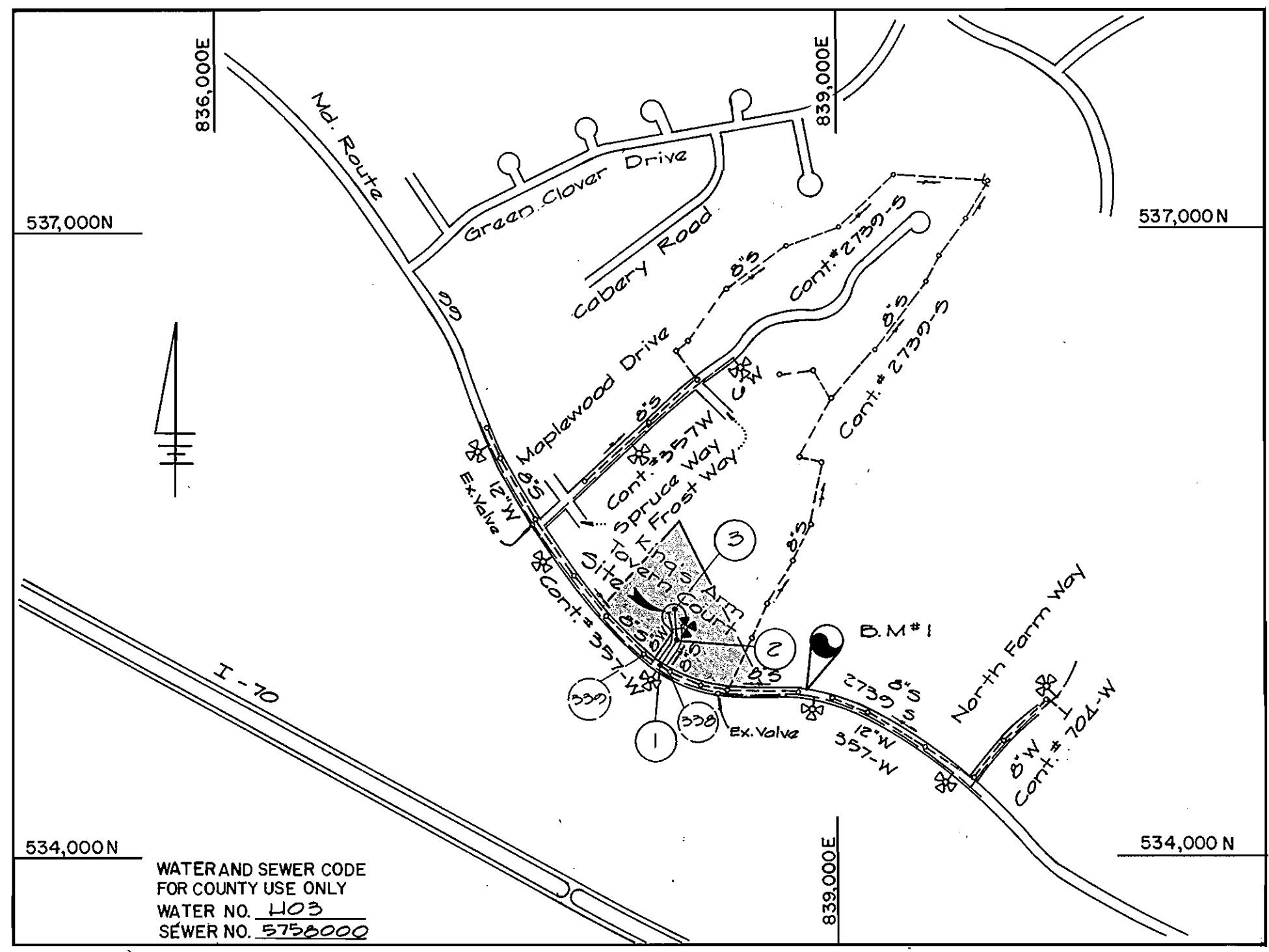
Stephen L. Fisher 7/18/85
 Howard Soil Conservation District Date

Station	Lot #	S.H.C. Elev. @ R
0+00 Lt	1	S.H.C. 471.05
1+20 Rt	11	S.H.C. 471.50
M1 #2 to M1 #3		
0+21 Rt	0	S.H.C. 471.07
1+02 Lt	0	S.H.C. 473.05
1+20 Rt	0	S.H.C. 473.57
M1 #5 Lt	0	S.H.C. 474.04
M1 #5 Lt	0	S.H.C. 473.52
M1 #5 Rt	0	S.H.C. 473.42
Ex. M1 #359 to Ex. M1 #340		
2+22 Rt	3	S.H.C. 470.73
Ex. M1 #337 to Ex. M1 #338		
0+25 Rt	12	S.H.C. 468.00

No. & Rd. Sta.	Dist.	Rim	Slope
1 0+10	5' Rt.	473.47	0.20%
2 1+40	20' Rt.	472.82	0.10%
3		480.82	0.10%

Item	Estimated	As Built	Supplier
1 8" Water B.I.	351 L.F.	340 L.F.	* A.P. SUPPLIES, INC.
2 6" Water B.I.	24 L.F.	*	"
3 3/4" W.H.C.	124 L.F.	124 L.F.	"
4 1" W.H.C.	102 L.F.	122 L.F.	"
5 12" x 8" Topping	1 Each	1 sleeve & 1 valve	"
6 Fire Hydrant	1 Each	1 EA.	"
7 6" F.H. Valve	1 Each	1 EA.	"
8 6" Sewer R.V.C.	317 L.F.	310 L.F.	"
9 6" Sewer R.V.C.	300 L.F.	292 L.F.	"
10 Manholes	3 Each	3 EA.	"
11 20" Steel Casing	27 L.F.	27 L.F.	L.B. FOSTER CO.
12 6" Valve	1 Each	1 EA.	"
13 8" x 6" Saddle	2 Each	1 EA.	"

* SEE NOTES



TYPE OF BUILDING Residential
 NUMBER OF LOTS 13 (11 Buildable)
 NUMBER OF WATER HOUSE CONNS. 11
 NUMBER OF SEWER HOUSE CONNS. 11
 DRAINAGE AREA 7.42 ac

VICINITY MAP
 SCALE: 1" = 1200'
GENERAL NOTES

- APPROXIMATE LOCATION OF EXISTING MAINS ARE SHOWN. THE CONTRACTOR SHALL TAKE ALL NECESSARY PRECAUTIONS TO PROTECT EXISTING MAINS AND SERVICES AND MAINTAIN UNINTERRUPTED SUPPLY. ANY DAMAGE INCURRED SHALL BE REPAIRED IMMEDIATELY TO THE SATISFACTION OF THE ENGINEER AT THE CONTRACTOR'S EXPENSE.
- ALL HORIZONTAL CONTROLS ARE BASED ON MARYLAND STATE COORDINATES.
- ALL VERTICAL CONTROLS ARE BASED ON U.S.G.S. DATA.
- ALL PIPE ELEVATIONS SHOWN ARE INVERT ELEVATIONS.
- CLEAR ALL UTILITIES BY A MINIMUM OF 6' CLEAR ALL POLES BY 2'-0" MINIMUM OR TUNNEL AS REQUIRED. THE OWNER HAS CONTACTED THE UTILITY COMPANIES AND HAS MADE ARRANGEMENTS FOR BRACING OF POLES AS SHOWN ON THE DRAWINGS. IN THE EVENT THE CONTRACTOR'S WORK REQUIRES THE BRACING OF ADDITIONAL POLES, ANY COST INCURRED BY THE OWNER FOR THE BRACING OF ADDITIONAL POLES OR DAMAGES SHALL BE DEDUCTED FROM MONEY OWED THE CONTRACTOR. THE CONTRACTOR SHALL COORDINATE WITH THE UTILITY COMPANIES TO SCHEDULE THE BRACING OF THE POLES.
- FOR DETAILS NOT SHOWN ON THE DRAWINGS, AND FOR MATERIALS AND CONSTRUCTION METHODS, USE HOWARD COUNTY DESIGN MANUAL, VOLUME IV, STANDARD SPECIFICATIONS AND DETAILS FOR CONSTRUCTION. THE CONTRACTOR SHALL HAVE A COPY OF VOLUME IV ON THE JOB.
- WHERE TEST PITS HAVE BEEN MADE ON EXISTING UTILITIES, THEY ARE NOTED BY THE SYMBOL [] AT THE LOCATION OF THE TEST PIT. A NOTE OR NOTES CONTAINING THE RESULTS OF TEST PIT OR PITS IS INCLUDED ON THE DRAWINGS. EXISTING UTILITIES IN THE VICINITY OF THE PROPOSED WORK FOR WHICH TEST PITS HAVE NOT BEEN DUG SHALL BE LOCATED BY THE CONTRACTOR TWO WEEKS IN ADVANCE OF CONSTRUCTION OPERATIONS AT HIS OWN EXPENSE.
- CONTRACTOR SHALL NOTIFY THE FOLLOWING UTILITIES OR AGENCIES AT LEAST FIVE WORKING DAYS BEFORE STARTING WORK SHOWN ON THESE PLANS:

- STATE HIGHWAY ADMINISTRATION - 531-5533
- BALTIMORE GAS & ELECTRIC CO. - CONTRACTOR SERVICES 561-2585
- BALTIMORE GAS & ELECTRIC CO. - UNDER GROUND DAMAGE CONTROL - 234-5621
- BALTIMORE GAS & ELECTRIC CO. - TROUBLE SHOOTING - 298-9013
- MISS UTILITY - 1-559-0100
- COLONIAL PIPELINE CO. - 795-1390
- BUREAU OF UTILITIES, HOWARD COUNTY DEPARTMENT OF PUBLIC WORKS - 992-2366
- CHESAPEAKE AND POTOMAC (C&P) TELEPHONE COMPANY - 725-9976
- AT & T TELEPHONE COMPANY - 992-2196

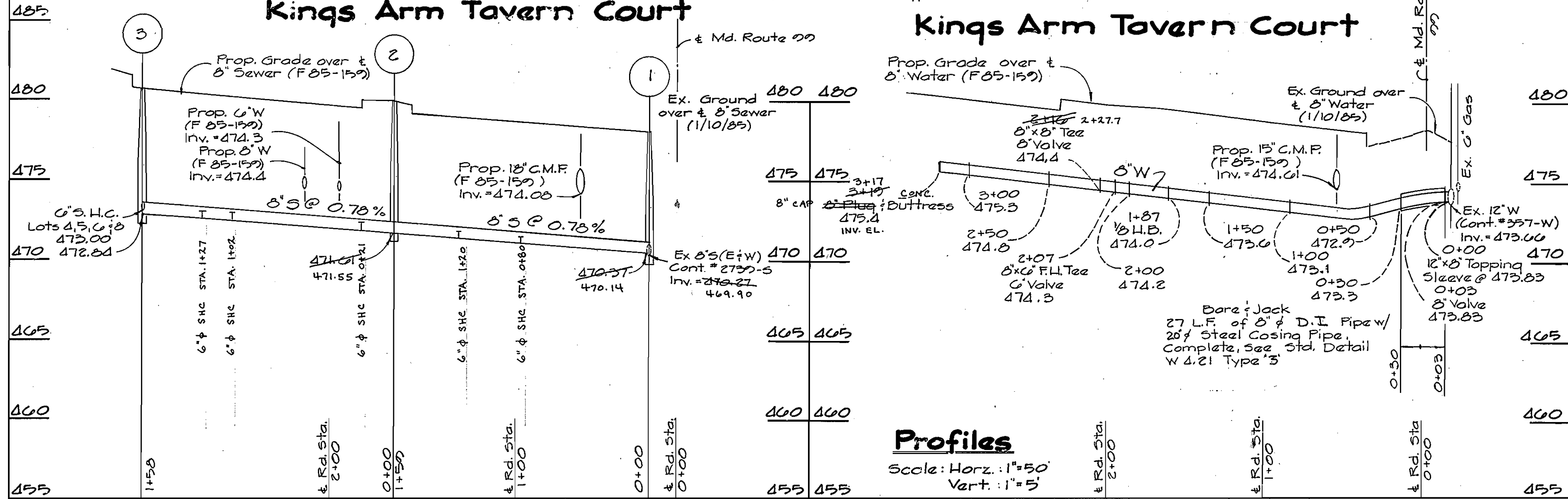
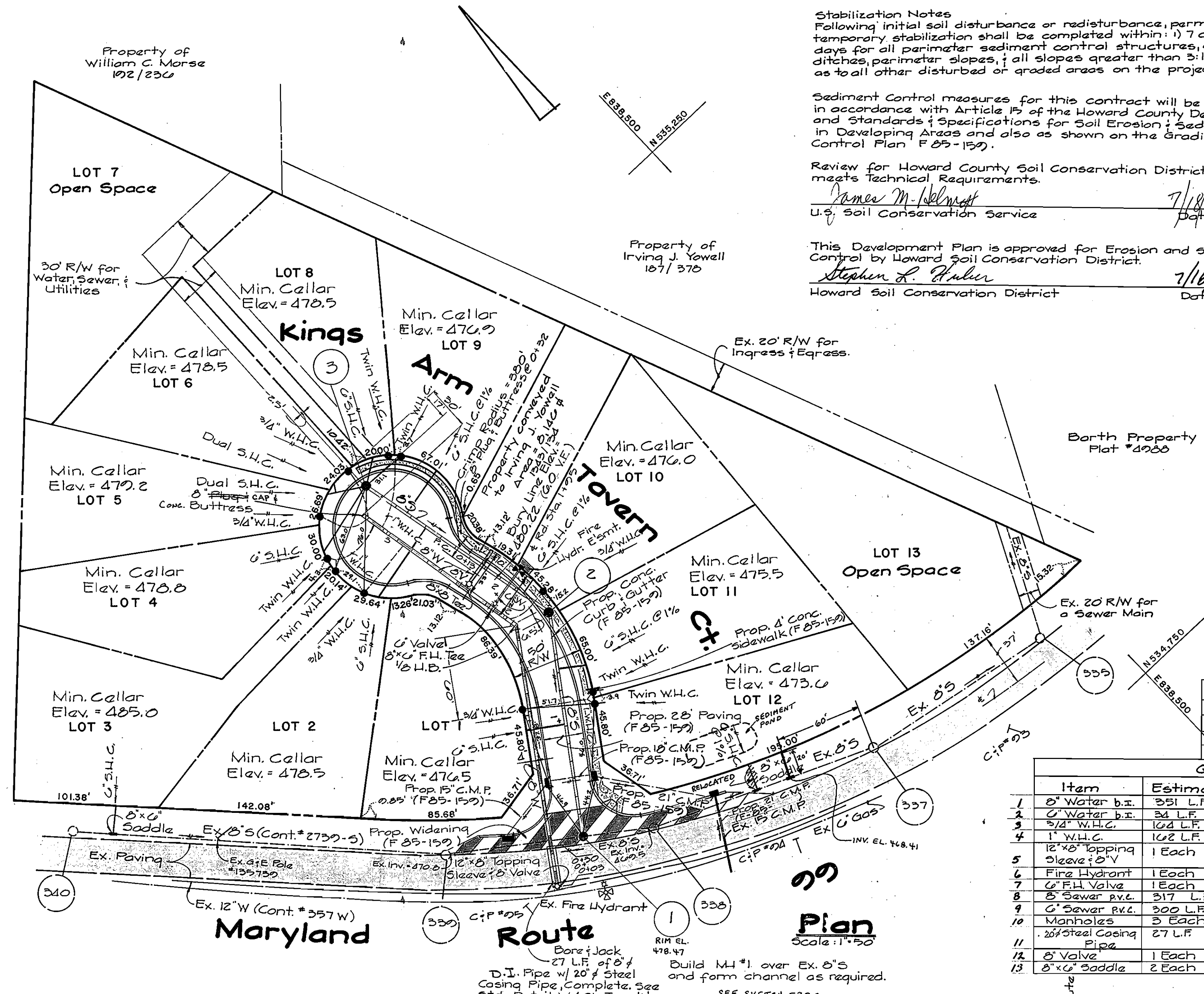
- TREES AND SHRUBS ARE TO BE PROTECTED FROM DAMAGE TO MAXIMUM EXTENT. TREES AND SHRUBS LOCATED WITHIN THE CONSTRUCTION STRIP ARE NOT TO BE REMOVED OR DAMAGED BY THE CONTRACTOR.
- CONTRACTOR SHALL REMOVE TREES, STUMPS AND ROOTS ALONG LINE OF EXCAVATION. PAYMENT FOR SUCH REMOVAL SHALL BE INCLUDED IN THE UNIT PRICE BID FOR CONSTRUCTION OF THE MAIN.
- ALL WATER MAINS TO BE D.I.P. UNLESS OTHERWISE NOTED.
- TOPS OF ALL WATER MAINS TO HAVE A MINIMUM OF 3'-1/2" COVER UNLESS OTHERWISE NOTED.
- VALVES ADJACENT TO TEES SHALL BE STRAPPED TO TEES.
- ALL FITTINGS SHALL BE BUTTRESSED OR ANCHORED WITH CONCRETE IN ACCORDANCE WITH THE STANDARD DETAILS UNLESS OTHERWISE PROVIDED FOR ON THE DRAWINGS.
- FIRE HYDRANTS SHALL BE SET TO THE BURY LINE ELEVATIONS SHOWN ON THE DRAWINGS. ALL FIRE HYDRANTS SHALL BE STRAPPED AND BUTTRESSED WITH CONCRETE. IN ACCORDANCE WITH STANDARD DETAILS, SOIL AROUND THE FIRE HYDRANT SHALL BE COMPACTED IN ACCORDANCE WITH SECTION 1003.8/1008 OF THE STD SPECIFICATIONS.
- THE CONTRACTOR SHALL NOT OPERATE ANY WATER MAIN VALVES ON THE EXISTING WATER SYSTEM.
- ALL SEWER MAINS SHALL BE C.S.P.X., R.C.S.P., V.C.P.X., A.C.P. CLASS 2400 OR P.V.C. UNLESS OTHERWISE NOTED.
- THE CONTRACTOR SHALL PROVIDE A JOINT IN ALL SEWER MAINS WITHIN 2'-0" OF EXTERIOR MANHOLE WALL.
- ALL MANHOLES SHALL BE 4'-0" INSIDE DIAMETER UNLESS OTHERWISE NOTED.
- FOR ALL COPPER WATER HOUSE CONNECTIONS, UTILIZE FLARED TYPE FITTINGS ONLY.
- MANHOLES SHOWN 12" AND 16" WALLS ARE BRICK MANHOLES ONLY.
- MANHOLES DESIGNATED W.T. IN PLAN AND PROFILE SHALL HAVE WATERTIGHT FRAME AND COVERS, STANDARD DETAIL 6552. WHERE WATERTIGHT MANHOLE FRAME AND COVER IS USED, SET TOP OF FRAME 1'-6" ABOVE FINISHED GRADE UNLESS OTHERWISE NOTED ON THE DRAWINGS.
- WATER MAIN AND WATER HOUSE CONNECTION LINE MUST BE PLACED SO AS TO HAVE AT LEAST ONE (1) FOOT SEPARATION FROM THE SEWER MAIN OR SEWER HOUSE CONNECTION AS THEY PASS ABOUT IT.
- PLACE REGULATION MEN WORKING AND WARNING SIGNS AS REQUIRED TO COMPLY WITH MARYLAND STATE HIGHWAY ADMINISTRATION MANUAL OF TRAFFIC CONTROL FOR HIGHWAY CONSTRUCTION AND MAINTENANCE OPERATIONS.
- ALL WATER HOUSE CONNECTIONS SHALL BE FOR AN INSIDE METER SETTING.
- MANHOLES LOCATED WITHIN PROPOSED ROADWAY SHALL HAVE STANDARD HEAVY TRAFFIC MANHOLE FRAME AND COVER, STANDARD DETAIL 6551.

AS BUILT
 EBA ENGINEERING, INC.

INSPECTOR - ERNIE PICCOLI

Nov. 10, 1985

CONTRACT NO. 24-1363 D
 MARKET SQUARE NORTH
 WATER & SEWER EXTENSION
 HOWARD COUNTY, MARYLAND



DEPARTMENT OF PUBLIC WORKS
 HOWARD COUNTY, MARYLAND
 DATE: 7-25-85
 DATE: 7-23-85

FISHER, COLLINS, AND CARTER, INC.
 CONSULTING ENGINEERS AND LAND SURVEYORS
 8388 COURT AVENUE
 ELLICOTT CITY, MARYLAND 21043
 TERRELL A. FISHER 10892

DES: DEV	
DRN: DEV	
CHK: TAF	
DATE: 4/17/85	
BY NO.	
REVISION	
DATE	

PLAN & PROFILES
WATER & SEWER MAINS
 600' SCALE MAP NO. 17 BLOCK NO.

MARKET SQUARE NORTH
 CONTRACT NO. 24-1363 D
 2nd ELECTION DISTRICT
 HOWARD COUNTY, MARYLAND
 SCALE AS SHOWN
 SHEET 1 OF 1