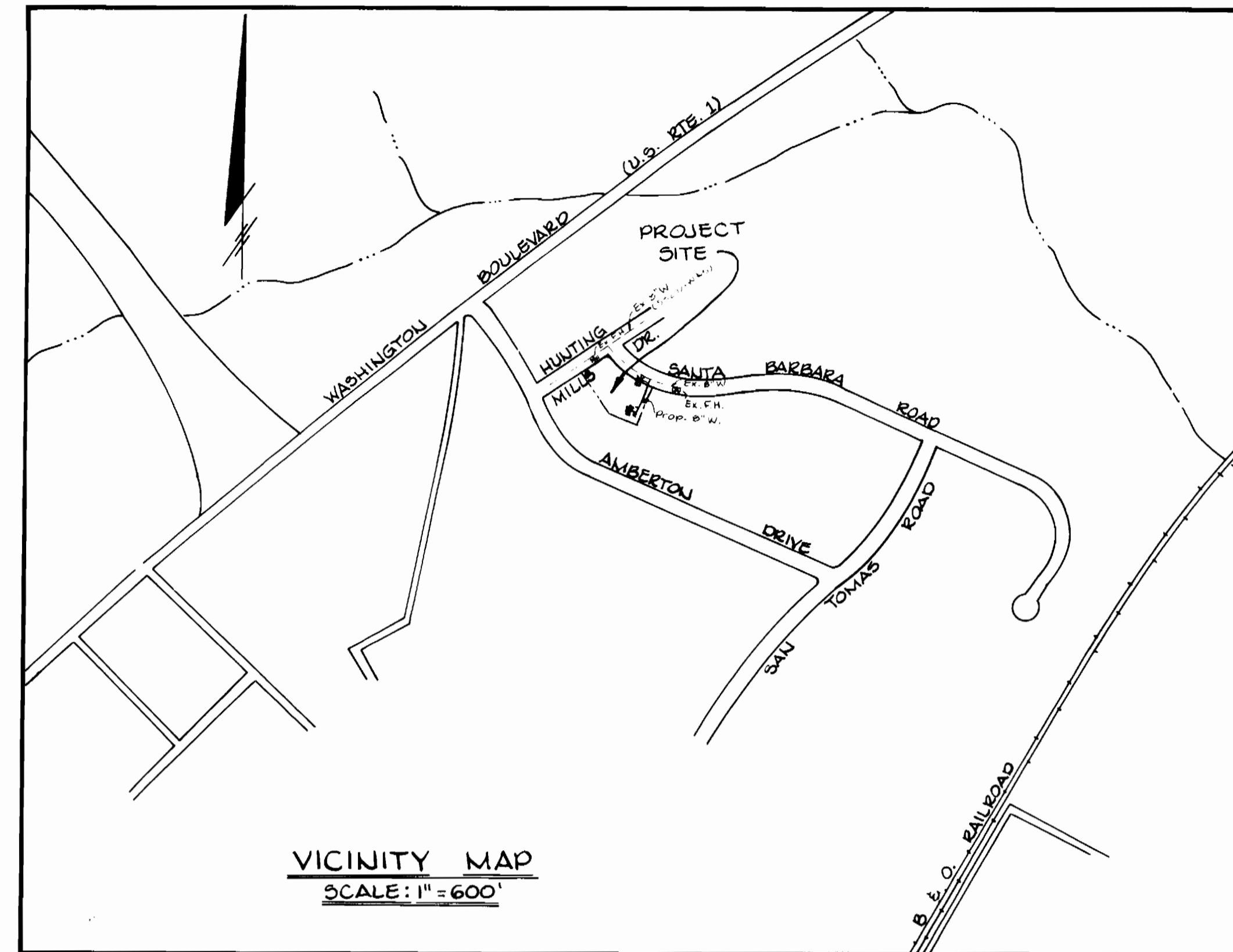
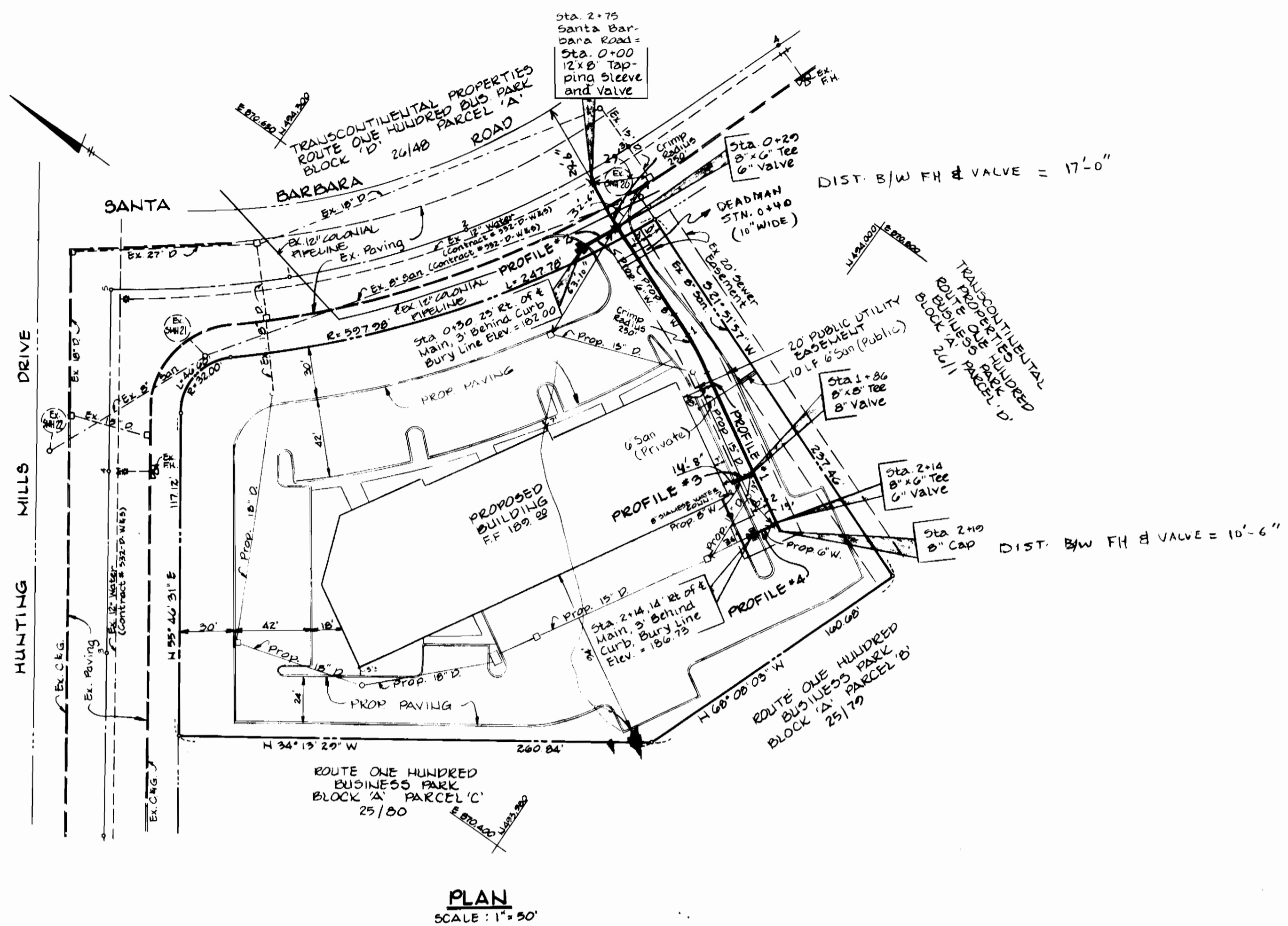
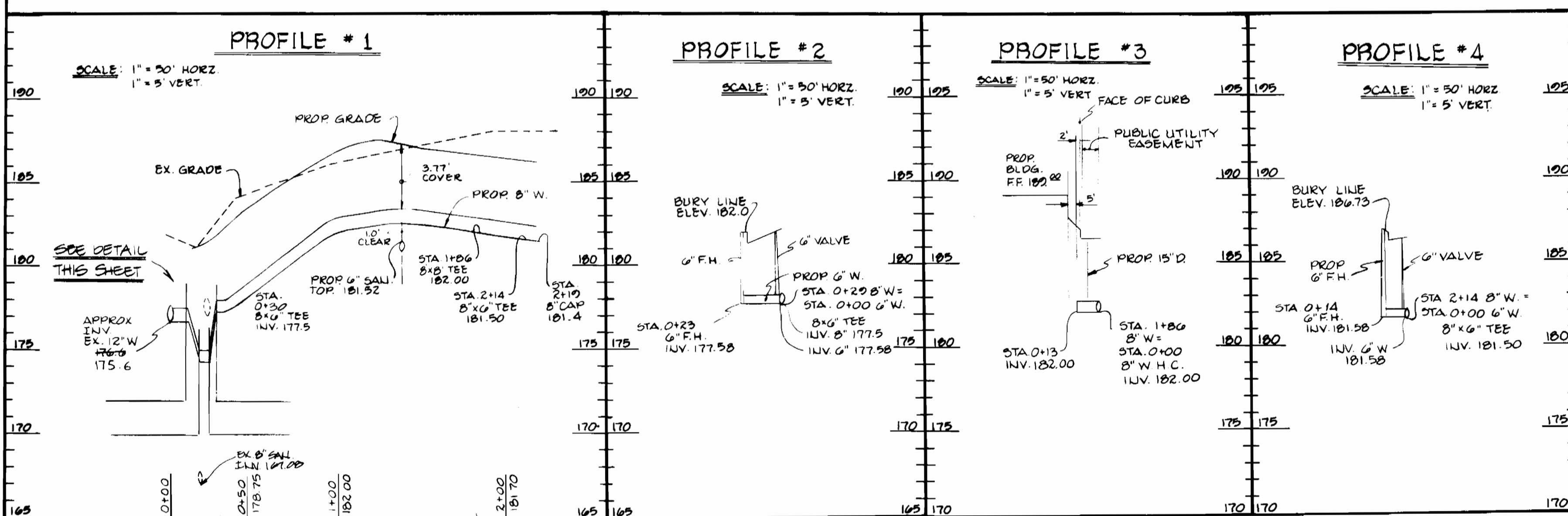
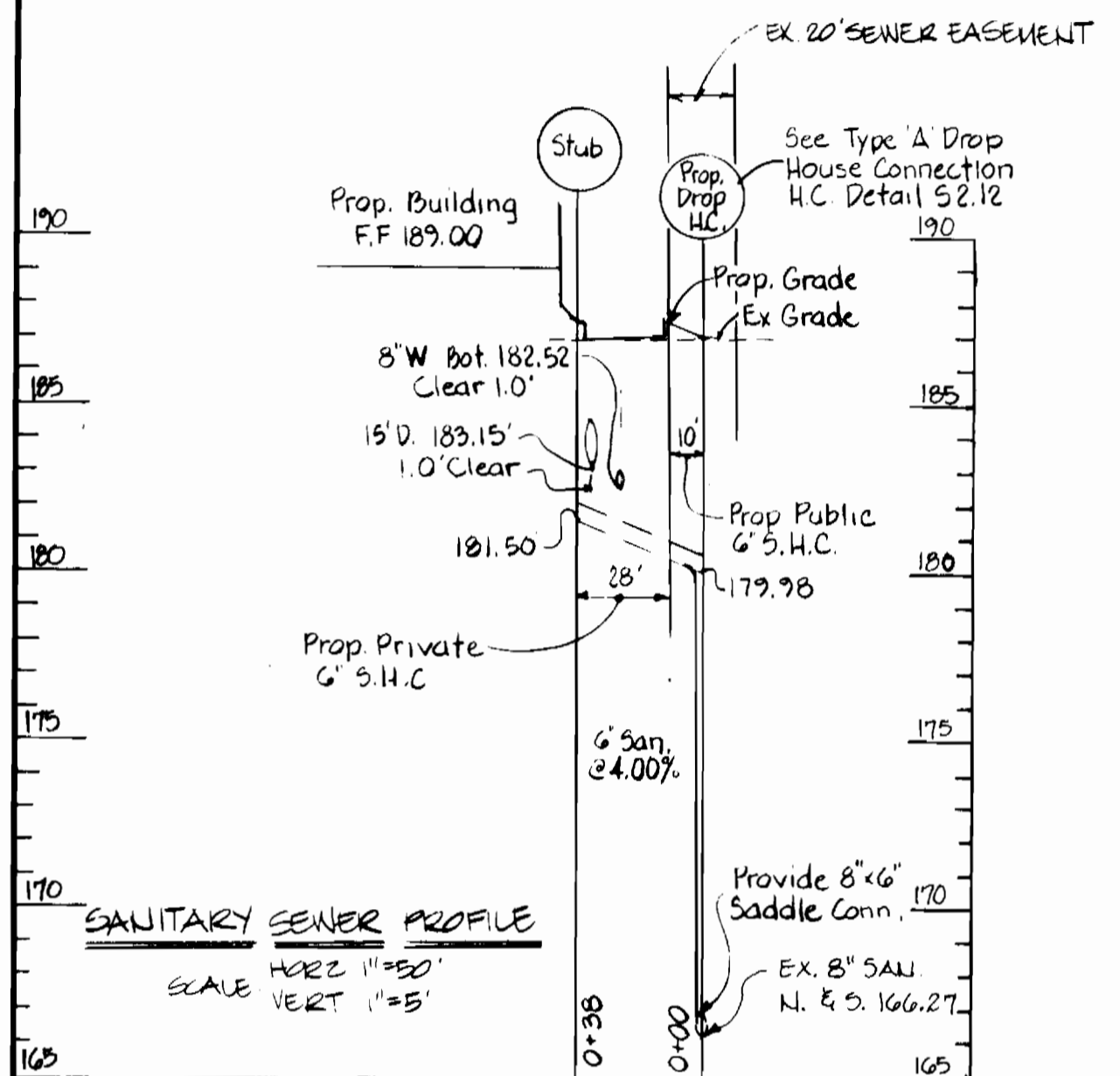


QUANTITIES			
ITEM	ESTIMATED	AS-BUILT	MATERIAL SUPPLIER
12" x 8" TAPPING	1 EA	1 EA	US PIPE & FOUNDRY CO.
8" x 6" TEE	2 EA	2 EA	" " " " " "
8" VALVE	1 EA	1 EA	" " " " " "
6" VALVE	2 EA	2 EA	" " " " " "
6" F.H.	2 EA	2 EA	" " " " " "
8" x 6" TEE	1 EA	1 EA	" " " " " "
8" D.I.P.	219 LF	219 LF	" " " " " "
6" D.I.P.	37 LF	37 LF	" " " " " "
6" SALL H.C.	10 LF	10 LF	AMFLO. PVE. DP 35
8" 1/2" VERT BEND	2 EA	2 EA	" " " " " "
6" 1/2" VERT BEND	2 EA	2 EA	US PIPE & FOUNDRY CO.



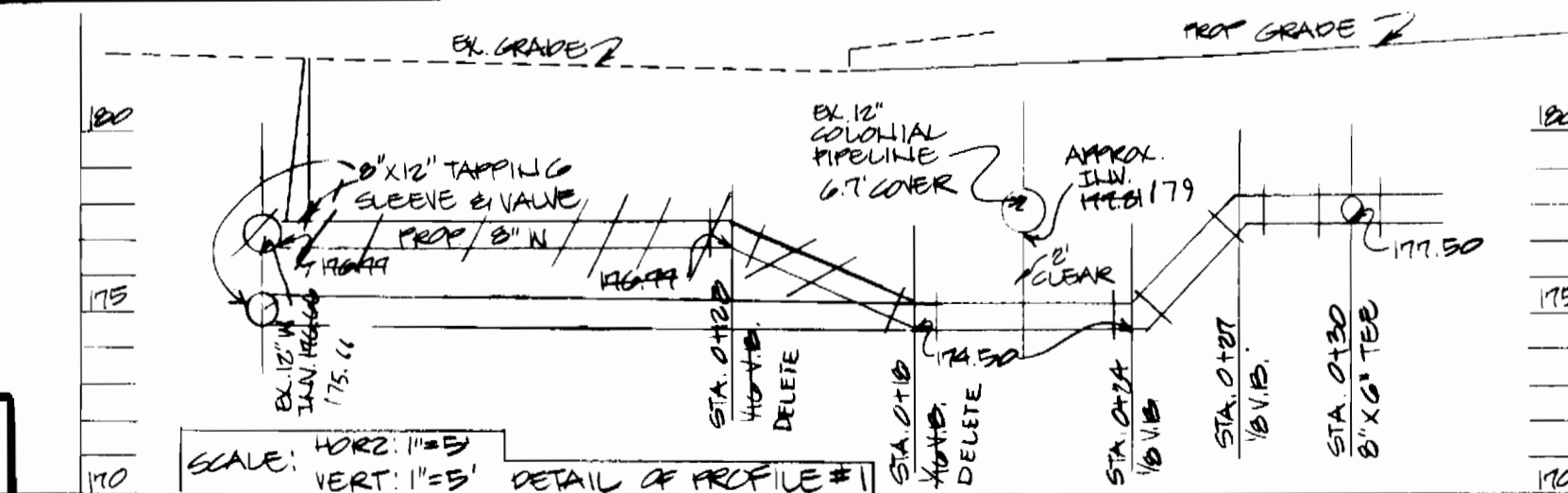
VICINITY MAP
SCALE: 1" = 600'

TYPE OF BUILDING	= OFFICE & WAREHOUSE
NUMBER OF LOTS	= 1
NUMBER OF WATER H.C.	= 1
NUMBER OF SEWER H.C.	= 1
DRAINAGE AREA	= DEEP RUN



REVIEWED FOR HOWARD SOIL CONSERVATION DISTRICT AND MDEPT TECHNICAL REQUIREMENTS.
 Signature: *[Signature]* DATE: 6-3-85
 U.S. SOIL CONSERVATION SERVICE
 THIS DEVELOPMENT PLAN IS APPROVED FOR SOIL EROSION AND SEDIMENT CONTROL BY THE HOWARD SOIL CONSERVATION DISTRICT.
 APPROVED: Signature: *[Signature]* DATE: 6-6-85
 HOWARD SOIL CONSERVATION DISTRICT

SEDIMENT CONTROL MEASURED FOR THIS CONTRACT WILL BE IMPLEMENTED IN ACCORDANCE WITH ARTICLE 15 OF THE STANDARD SPECIFICATIONS & SDP 85-111



- GENERAL NOTES**
- PART I:**
- Approximate location of existing mains are shown. The Contractor shall take all necessary precautions to protect existing mains and services and maintain uninterrupted supply. Any damage incurred shall be repaired immediately to the satisfaction of the Engineer at the Contractor's expense.
 - All horizontal controls are based on Maryland State Coordinates.
 - All vertical controls are based on U.S.G.S. data.
 - All pipe elevations shown are invert elevations.
 - Clear all utilities by a minimum of 6'. Clear all poles by 2' 0" minimum or tunnel as required. The owner has contacted the utilities companies and has made arrangements for bracing of poles as shown on the drawings. In the event the Contractor's work requires the bracing of additional poles, any cost incurred by the owner for the bracing of additional poles or damages shall be deducted from money owed the Contractor. The Contractor shall coordinate with the utility companies to schedule the bracing of the poles.
 - For details not shown on the drawings, and for materials and construction methods, use Howard County Design Manual, Vol. IX, Standard Specifications and Details for Construction. The Contractor shall have a copy of Vol. IX on the job.
 - Where test pits have been made on existing utilities, they are noted by the symbol (C.N.S.) at the location of the test pit. A note or notes containing the results of the test pit or pits is included on the drawings. Existing utilities in the vicinity of the proposed work for which test pits have not been dug shall be located by the Contractor 2 weeks in advance of construction operations at his own expense.
 - Contractor shall notify the following utilities or agencies at least five working days before starting work shown on these plans: State Highway Administration 531-5533
- PART II: WATER**
- All water mains to be D.I.P. unless otherwise noted.
 - Tops of all water mains to have a minimum of 4' cover unless otherwise noted.
 - Valves adjacent to tees shall be strapped to tees.
 - All fittings shall be buttressed or anchored with concrete in accordance with the Standard Details unless otherwise provided for on the drawings.
 - Fire hydrants shall be set to the bury elevations shown on the drawings. All fire hydrants shall be strapped and buttressed with concrete in accordance with Standard Details. Soil around the fire hydrant shall be compacted in accordance with Section 1003 of the Standard Specifications.
 - The Contractor shall not operate any water main valves on the existing water system.
 - All water house connections shall be inside meter settings unless otherwise noted.
- PART III: SEWER**
- All sewer mains shall be C.S.P.X., R.C.S.P., V.C.P.X., A.C.P. Class 2400 or P.V.C. unless otherwise noted.
 - The contractor shall provide a joint in a sewer main within 2'-0" of exterior manhole wall.
 - All manholes shall be 4'-0" inside diameter unless otherwise noted.
 - Manholes shown with 12" and 16" walls are brick manholes only.
 - Manholes designated W.T. in the plan & profile shall have water-tight frame & covers, standard Detail G-532 where water-tight manhole frame & cover is used, set top of frame 1'-6" above finished grade, unless otherwise noted on the drawings.
 - House (s) with the symbol "C.N.S." indicates that cellar cannot be served.

DEPARTMENT OF PUBLIC WORKS HOWARD COUNTY, MARYLAND Signature: <i>[Signature]</i> DATE: 6-7-85 CHIEF, BUREAU OF ENGINEERING	GEORGE WILLIAMS STEPHENS, SR. AND ASSOCIATES, INC. 303 ALLEGHENY AVENUE TOWSON, MARYLAND 21204 825-8120 Signature: <i>[Signature]</i> DATE: 6-6-85 CHIEF, LAND DEVELOPMENT DIVISION	DES: P.R.C. DRN: K.L.B. CHK: P.R.C. DATE: 3/1/85 ANY CHANGE BY NO.	PLAN AND PROFILE FOR PROPOSED WATER MAIN CONTRACT NO. 14-1353-D HOWARD COUNTY, MARYLAND P15, 3128 BLOCK NO. 24	PROPOSED OFFICE & WAREHOUSE ROUTE 100 BUSINESS PARK 6600 SANTA BARBARA ROAD BLOCK 'E' PARCEL 'A' HOWARD COUNTY, MARYLAND P15, 3128 ELECTION DISTRICT #1 MARCH 1, 1983	SCALE AS SHOWN SHEET 1 OF 1
--	---	--	---	---	--------------------------------