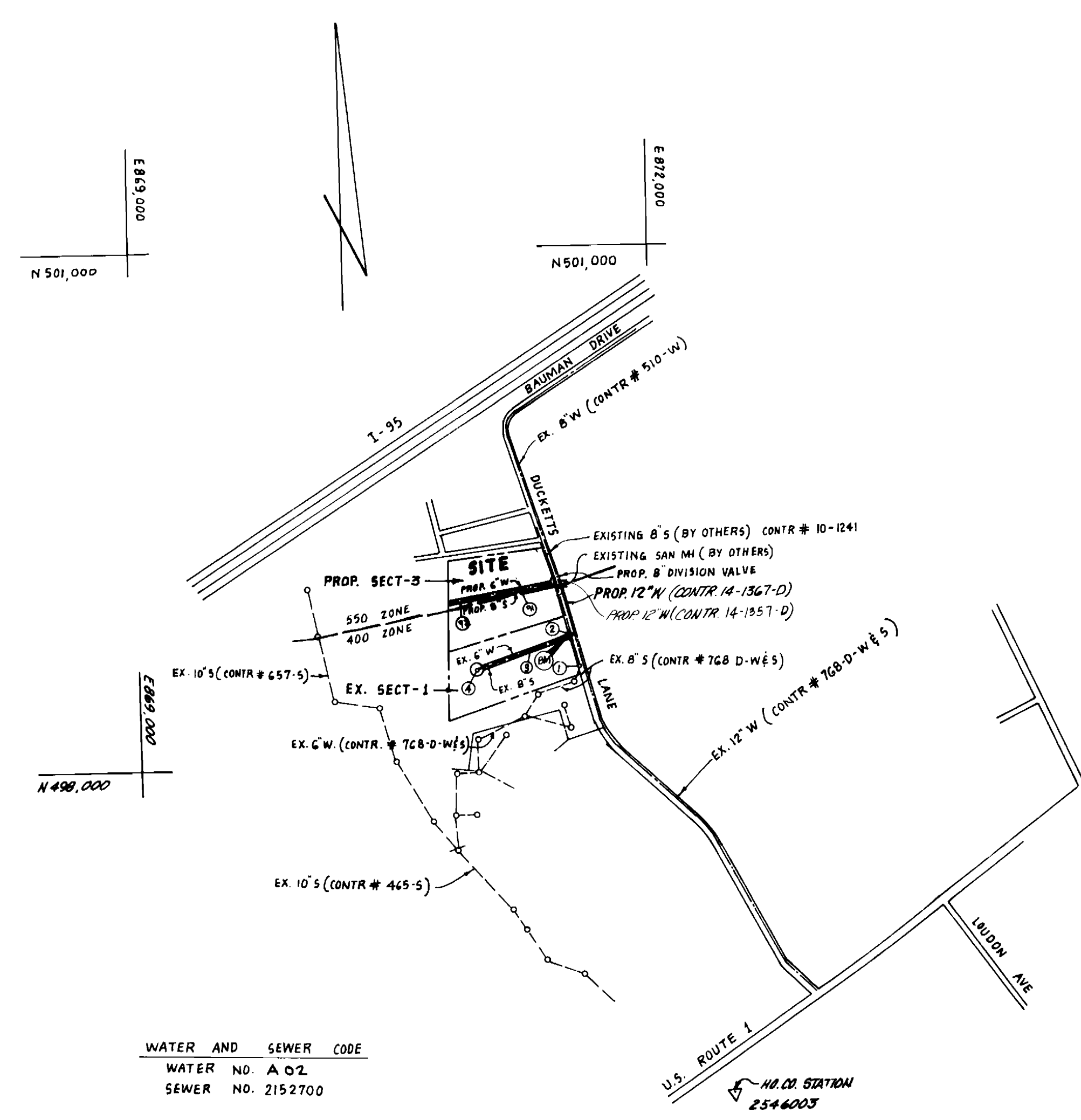


TYPE OF BUILDING	SINGLE FAMILY DETACHED DWLGs.
NUMBER OF LOTS	20
NUMBER OF SHC'S	20
NUMBER OF WHC'S	20
DRAINAGE AREA	PATAPSCO



WATER AND SEWER CODE
 WATER NO. A 02
 SEWER NO. 2152700

BENCHMARK
 ELEV - 187.65 ROADSIDE BONNETT BOLT
 ON FIRE HYDRANT ON SOUTH SIDE OF KYLE
 LEAF COURT, WEST OF DUCKETTS LANE

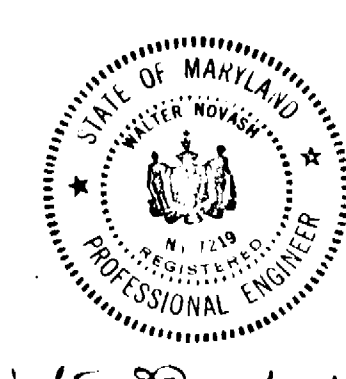
VICINITY MAP
 SCALE: 1"=600'

GENERAL NOTES

- APPROXIMATE LOCATION OF EXISTING MAINS ARE SHOWN. THE CONTRACTOR SHALL TAKE ALL NECESSARY PRECAUTIONS TO PROTECT EXISTING MAINS AND SERVICES AND MAINTAIN UNINTERRUPTED SUPPLY. ANY DAMAGE INCURRED SHALL BE REPAIRED IMMEDIATELY TO THE SATISFACTION OF THE INSPECTOR, AT THE CONTRACTOR'S EXPENSE.
- ALL HORIZONTAL CONTROLS ARE BASED ON MARYLAND STATE COORDINATES.
- ALL VERTICAL CONTROLS ARE BASED ON U.S.G.S. DATUM.
- ALL PIPE ELEVATIONS SHOWN ARE INVERT ELEVATIONS.
- CLEAR ALL UTILITIES BY A MINIMUM OF 6" CLEAR ALL POLES BY 2'-0" MINIMUM OR TUNNEL AS REQUIRED. ANY COST INCURRED TO THE CONTRACTOR FOR TUNNELING OR BRACING AT POLES SHALL BE INCLUDED IN UNIT PRICES BID FOR EXCAVATION AND BACKFILL.
- FOR DETAILS NOT SHOWN ON THE DRAWINGS USE HOWARD COUNTY STANDARD DETAILS.
- FOR MATERIAL AND CONSTRUCTION METHODS USE HOWARD COUNTY STANDARD SPECIFICATIONS.
- CONTRACTOR SHALL LOCATE EXISTING UTILITIES A MINIMUM OF TWO (2) WEEKS IN ADVANCE OF CONSTRUCTION OPERATIONS IN THE VICINITY OF PROPOSED UTILITIES AT HIS OWN EXPENSE.
- CONTRACTOR SHALL NOTIFY THE FOLLOWING UTILITIES OR AGENCIES AT LEAST FIVE (5) WORKING DAYS BEFORE STARTING WORK SHOWN ON THESE PLANS:
 STATE HIGHWAY ADMINISTRATION - 531-5533
 BALTO. GAS & ELECTRIC CO. - UNDERGROUND ELECTRIC DISTRIBUTION CUSTOMER SERVICE - 685-0123
 BALTO. GAS & ELECTRIC CO. - UNDERGROUND GAS DISTRIBUTION CUSTOMER SERVICE - 685-0123
 ENGINEERING - DAMAGE CONTROL - 234-5421
 "MISS UTILITY" - 1-559-0100
 CHESAPEAKE & POTOMAC (C&P) TELEPHONE CO. - 725-3976
 AMERICAN TELEPHONE & TELEGRAPH - CABLE LOCATION DIVISION - 393-3553
 COLONIAL PIPELINE CO. - 781-4141
 BUREAU OF UTILITIES HOWARD COUNTY - 992-2366
- TREES ARE TO BE PROTECTED FROM DAMAGE TO MAXIMUM EXTENT. TREES LOCATED WITHIN THE CONSTRUCTION STRIP ARE NOT TO BE REMOVED OR DAMAGED BY THE CONTRACTOR.
- CONTRACTOR SHALL REMOVE TREES, STUMPS, AND ROOTS ALONG LINE OF EXCAVATION AS DIRECTED BY INSPECTOR. PAYMENT FOR SUCH REMOVAL SHALL BE INCLUDED IN THE UNIT PRICE BID FOR EXCAVATION AND BACKFILL.
- PLACE REGULATION "MEN WORKING" AND WARNING SIGNS AS REQUIRED TO COMPLY WITH MARYLAND STATE HIGHWAY ADMINISTRATION MANUAL OF TRAFFIC CONTROL FOR HIGHWAY CONSTRUCTION AND MAINTENANCE OPERATIONS.
- ALL WATER MAINS TO BE D.I.P. UNLESS OTHERWISE NOTED.
- TOP OF ALL WATER MAINS TO HAVE A MINIMUM OF 3'-1/2" COVER UNLESS OTHERWISE NOTED.
- VALVES ADJACENT TO TEES SHALL BE STRAPPED TO TEES.
- BLOCK ALL FITTINGS WITH CONCRETE.
- BURY LINE ELEVATIONS ON FIRE HYDRANTS SHALL BE SET TO THE ELEVATIONS SHOWN ON THE DRAWINGS. ALL FIRE HYDRANTS SHALL BE STRAPPED AND BUTTRESSED WITH CONCRETE IN ACCORDANCE WITH STANDARD DETAILS. SOIL AROUND THE FIRE HYDRANT TO BE COMPACTED IN ACCORDANCE WITH SECTIONS 1003 AND 1008 OF THE STANDARD SPECIFICATIONS.
- ALL WATER HOUSE CONNECTIONS SHALL BE FOR AN INSIDE METER SETTING.
- THE CONTRACTOR SHALL NOT OPERATE ANY WATER MAIN VALVES ON THE EXISTING SYSTEM.
- ALL SEWER MAINS SHALL BE C.S.P.X., V.C.P.X., P.V.C., OR A.C.P. CLASS 2400 UNLESS OTHERWISE NOTED.
- THE CONTRACTOR SHALL PROVIDE A JOINT IN ALL SEWER MAINS WITHIN 2'-0" OF EXTERIOR MANHOLE WALL.
- ALL MANHOLES SHALL BE 4'-0" INSIDE DIAMETER, UNLESS OTHERWISE NOTED.
- WATER MAIN AND WATER HOUSE CONNECTION LINES MUST HAVE A MINIMUM OF ONE FOOT SEPARATION FROM THE SANITARY SEWER AND SEWER HOUSE CONNECTIONS AS THEY CROSS EXCEPT AT CROSSINGS. WATER AND SEWER LINES SHALL HAVE A MINIMUM HORIZONTAL SEPARATION OF 10' FOR ALL COPPER WATER HOUSE CONNECTIONS, UTILITY FLARED TYPE FITTINGS ONLY.

SEDIMENT CONTROL MEASURES WILL BE IMPLEMENTED IN ACCORDANCE WITH ARTICAL NO. 15 OF THE SPECIFICATIONS AND WITH ROAD CONSTRUCTION PLANS F-84-99 SEDIMENT & EROSION CONTROL

REVIEWED FOR HOWARD SOIL CONSERVATION DISTRICT AND MEETS TECHNICAL REQUIREMENT.
J. Helms 7/1/86
 DATE
 US SOIL CONSERVATION SERVICE
 THIS DEVELOPMENT PLAN IS APPROVED FOR SOIL EROSION AND SEDIMENT CONTROL BY THE HOWARD SOIL CONSERVATION DISTRICT.
 APPROVED:
Robert J. Zeman 7/1/86
 HOWARD S.C.D. DATE



Walter F.rough 1-7-86

**GLEN COVE ESTATES
 SECTION 3
 CONTRACT NO. 14-1357-D
 HOWARD COUNTY, MARYLAND**

QUANTITIES			
ITEM	ESTM'D	AS-BUILT	MATERIAL/SUPPLIER
6" W	621 LF	642 LF	GRIFIN PIPE CO.
12" W	78 LF	72 LF	GRIFIN PIPE CO.
8" S	520 LF	517 LF	AMERICAN
F.H.	2 EA	2 EA	KENNEDY
12" x 8" MANHOLE	1 EA	1 EA	GRIFIN PIPE CO.
6" C.V. (EXCLD F.H.V.)	1 EA	1 EA	KENNEDY
6" B.M.C.	316 LF	316 LF	AMERICAN
3/4" M.C.	114 LF	114 LF	AMERICAN
1" M.C.	186 LF	186 LF	AMERICAN

GLEN COVE ESTATES SECTION 3
 (LOTS 4B THRU 6B)

DEPARTMENT OF PUBLIC WORKS
 HOWARD COUNTY, MARYLAND
 Director of Public Works: *Robert J. Zeman* 11-6-86
 Chief, Bureau of Engineering: *Walter F.rough* 11-5-86
 Chief, Bureau of Utilities: *Robert J. Zeman* 9-9-86
 Chief, Land Development Div: *Walter F.rough* 11-5-86

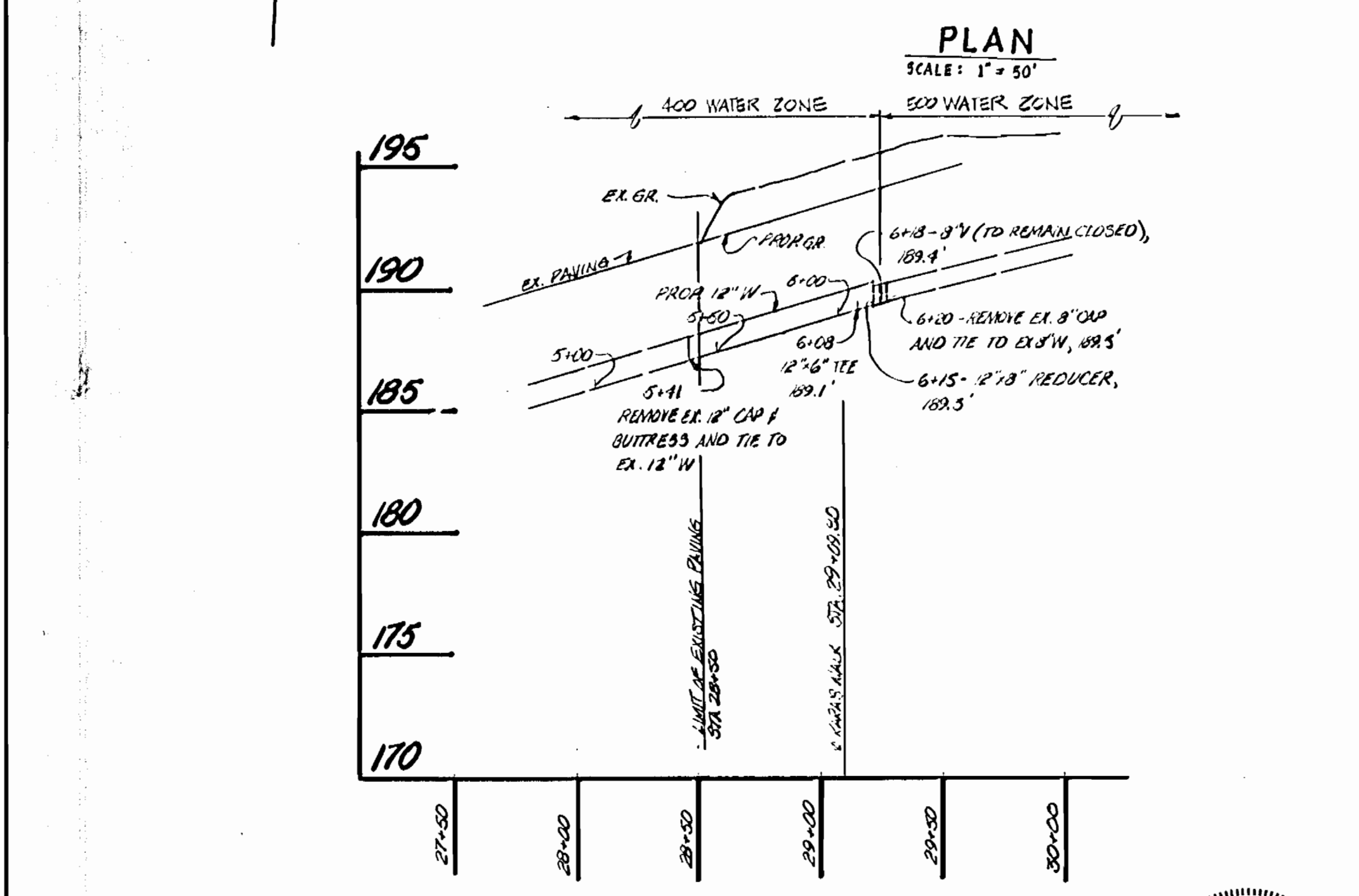
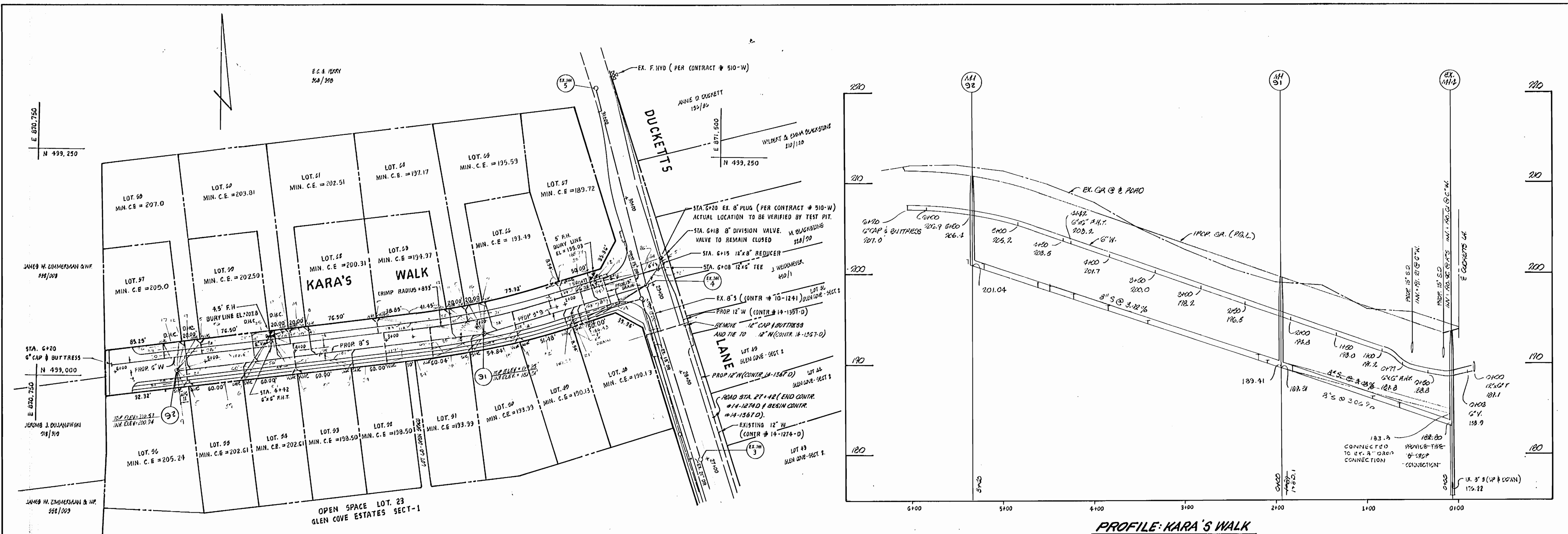
BOENDER ASSOCIATES, INC
 ENGINEERS - PLANNERS - SURVEYORS
 3565 ELLICOTT MILLS DRIVE
 ELLICOTT CITY, MD 21043
 465-7777

DES: J.J.B.				
DRN: K.A.P.				
CHK:				
DATE: MARCH 85	BY	NO	REVISION	DATE

TITLE SHEET

GLEN COVE ESTATES - SECTION 3
 1ST. ELECTION DISTRICT
 CONTRACT NO. 14-1357-D

SCALE AS SHOWN
 SHEET 1 OF 2



Walter F. Smith 1-7-86

LOTS	SEWER HOUSE CONNECTION ELEVATIONS	
	SEWER MAIN @ 12"	SEWER MAIN @ 18"
51-48	185.86	186.22
50-50	189.22	190.08
51-52	194.54	194.70
53-54	198.44	198.3
55	201.04	201.5
56	198.92	195.46
57-58	198.72	197.56
59-60	190.44	191.1
61-62	195.84	196.5
63	197.14	197.78
64	198.05	198.67
65-66	200.53	201.2

DEPARTMENT OF PUBLIC WORKS
 HOWARD COUNTY, MARYLAND
 Director of Public Works: *Robert M. Bevington* 11-8-86
 Chief, Bureau of Utilities: *Robert M. Bevington* 11-8-86

BOENDER ASSOCIATES, INC
 ENGINEERS - PLANNERS - SURVEYORS
 3565 ELLICOTT MILLS DRIVE
 ELLICOTT CITY, MD. 21043
 465-7777

DES: J.J.B.				
DRN: K.A.P.				
CHK:				
DATE: MARCH, 85	BY	NO	REVISION	DATE

PLAN

GLEN COVE ESTATES - SECTION - 3
 1ST ELECTION DISTRICT
 CONTRACT NO. 14-1357-D
 SCALE: AS SHOWN
 SHEET 2 OF 2