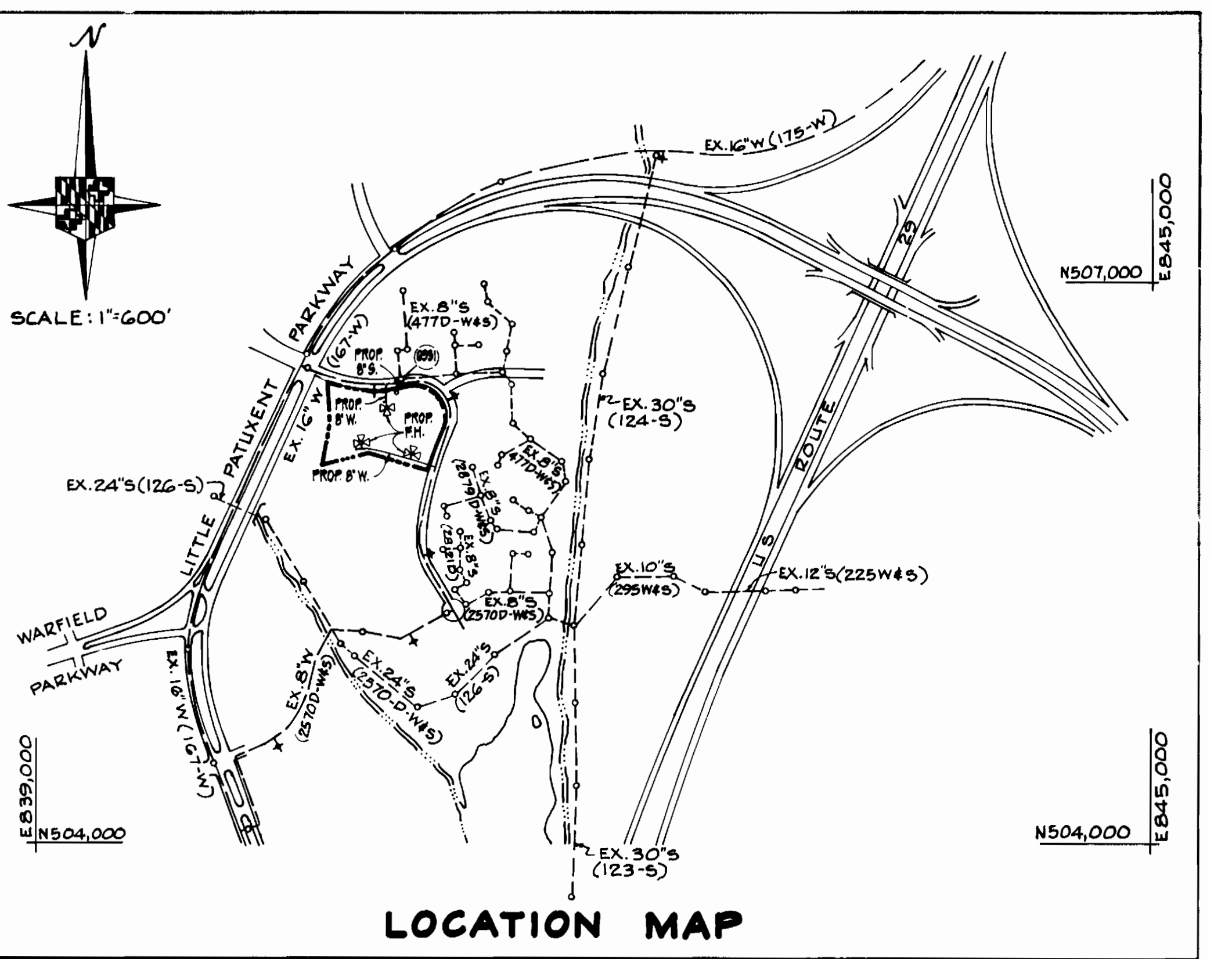


TYPE OF BUILDINGS - APARTMENT/NURSING HOME
 DRAINAGE AREA - LITTLE PATUXENT
 NUMBER OF WHG - 1 - 8"
 NUMBER OF SHG - 1 - (PRIVATE)
 SEWER CODE 5600100
 WATER CODE E-05

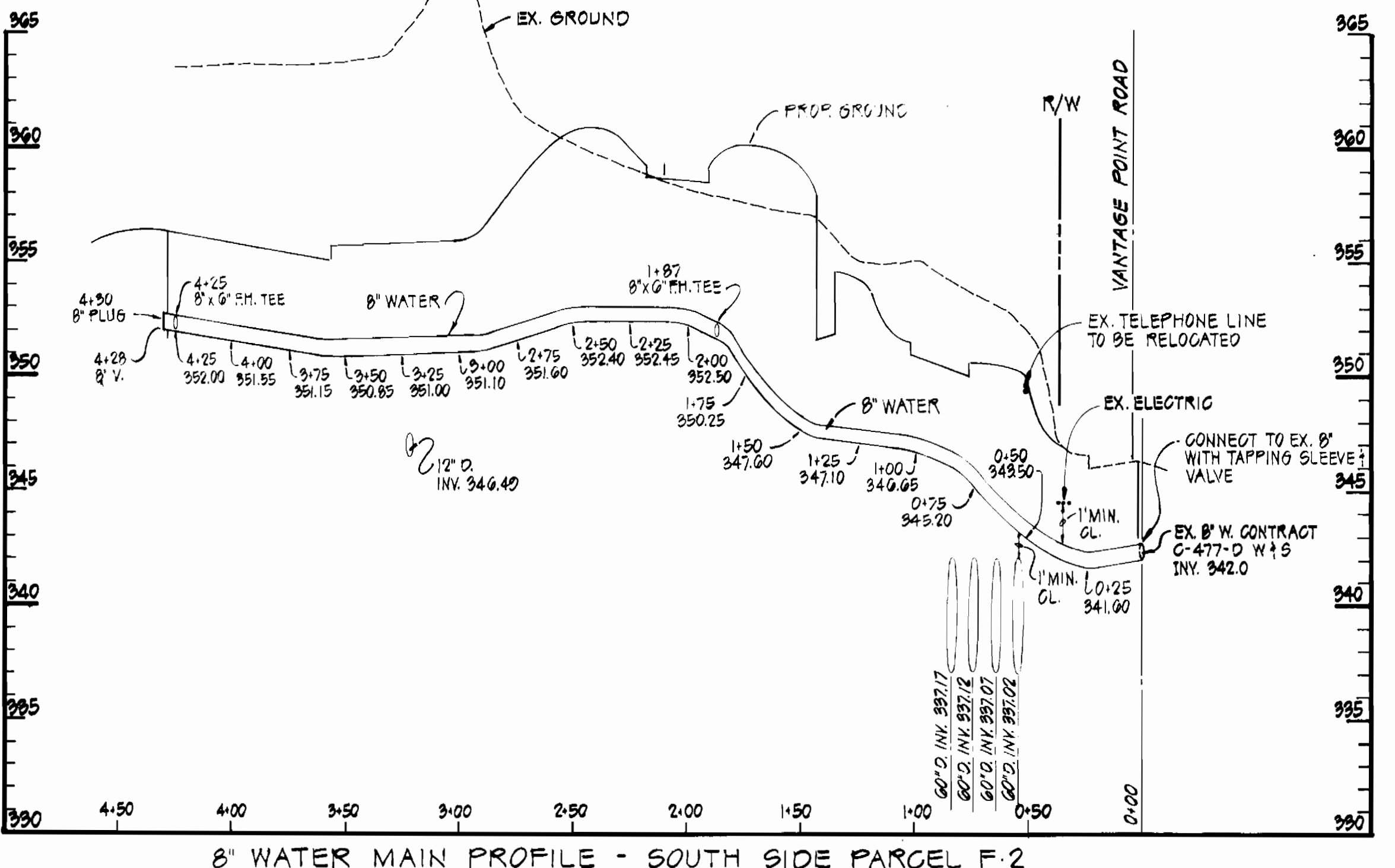
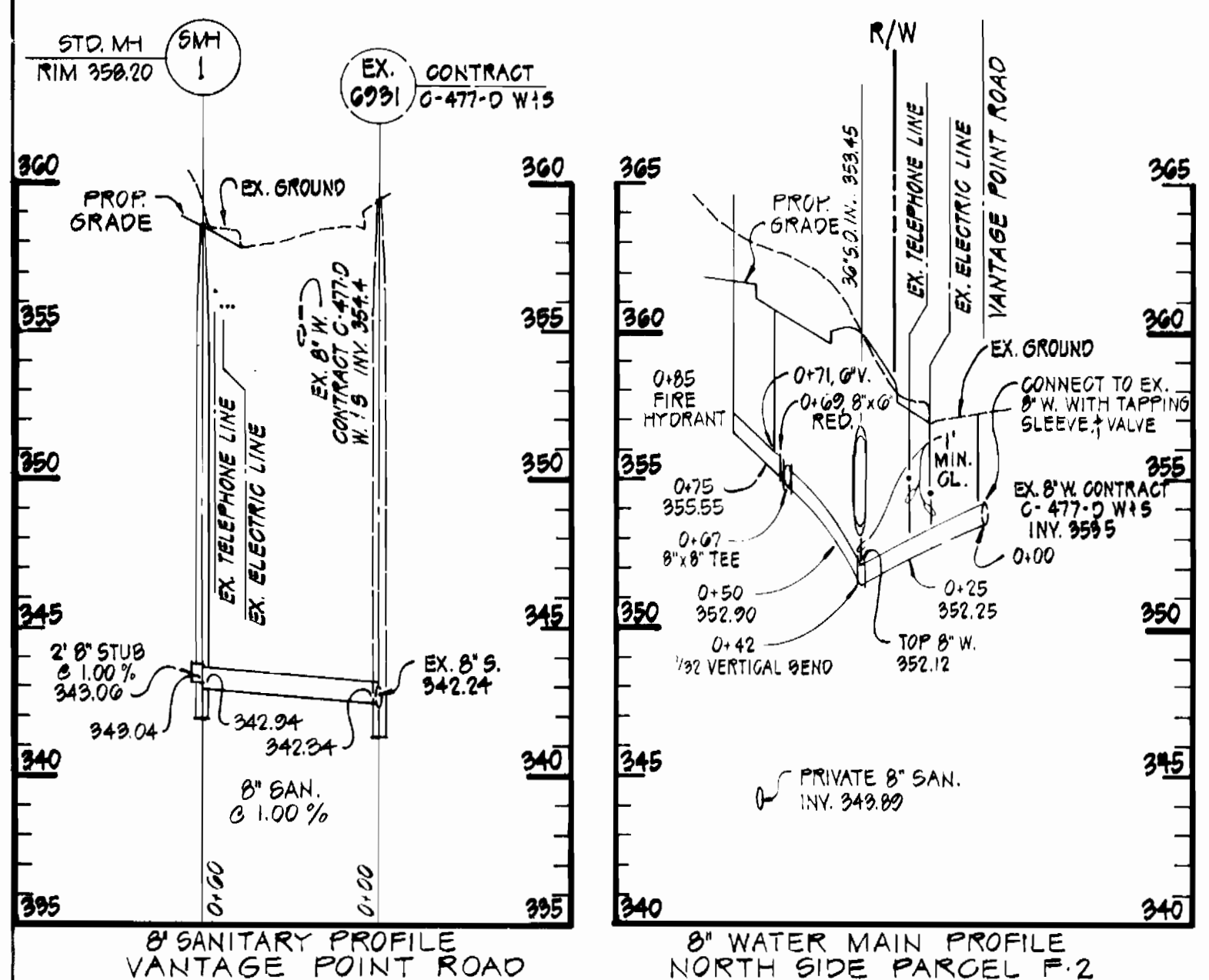
BENCH MARK
 ELEVATIONS ARE BASED ON BENCH MARKS SHOWN ON "AS-BUILT" CONTRACT DRAWINGS (SHEET 1 OF 3) FOR VANTAGE POINT ROAD.
 B.M. #1 GALVANIZED SPIKE IN G.I. POLE 360'± SOUTH OF LEAF TREADER WAY, 35'± WEST OF VANTAGE POINT ROAD. ELEV. 352.87
 B.M. #4 + CUT ON WESTERNMOST FLANGE BOLT OF FIRE HYDRANT, SOUTHEAST CORNER OF VANTAGE POINT ROAD AND LEAF TREADER WAY. ELEV. 356.42

QUANTITIES			
ITEM	BID	AS-BUILT	MATERIAL/SUPPLIER
8" WATER MAIN	499 LF.	509 LF.	DIP / GRIFFIN
6" WATER MAIN	30 LF.	25 LF.	DIP / GRIFFIN
8" VALVE	4	4	M.J. GATE VALVE / M.H. VALVE CO.
6" VALVE	3	3	"
8"x8" TAPPING SLEEVE	2	2	M.H. VALVE CO.
FIRE HYDRANT	3	3	929 F.H. M.H. VALVE CO.
8" SANITARY	60 LF.	60.5 LF.	NATIONAL / PVC 50R 35
STD. SANITARY MH	1	1	PRECAST ASTEC 478 / ATLANTIC PRECAST CONC. CO.



GENERAL NOTES

- APPROXIMATE LOCATION OF EXISTING MAINS ARE SHOWN. THE CONTRACTOR SHALL TAKE ALL NECESSARY PRECAUTIONS TO PROTECT EXISTING MAINS AND SERVICES AND MAINTAIN UNINTERRUPTED SUPPLY. ANY DAMAGE INCURRED SHALL BE REPAIRED IMMEDIATELY TO THE SATISFACTION OF THE ENGINEER, AT THE CONTRACTOR'S EXPENSE.
- ALL HORIZONTAL CONTROLS ARE BASED ON MARYLAND STATE COORDINATES.
- ALL VERTICAL CONTROLS ARE BASED ON U.S.G.S. DATUM.
- ALL PIPE ELEVATIONS SHOWN ARE INVERT ELEVATIONS.
- CLEAR ALL UTILITIES BY A MINIMUM OF 6". CLEAR ALL POLES BY 2'-0" MINIMUM OR TUNNEL AS REQUIRED. ANY COST INCURRED TO THE CONTRACTOR FOR TUNNELING OR BRACING AT POLES SHALL BE INCLUDED IN UNIT PRICES BID FOR CONSTRUCTION OF THE MAIN.
- FOR DETAILS NOT SHOWN ON THE DRAWINGS USE HOWARD COUNTY STANDARD DETAILS.
- FOR MATERIALS AND CONSTRUCTION METHODS USE HOWARD COUNTY STANDARD SPECIFICATIONS.
- CONTRACTOR SHALL LOCATE EXISTING UTILITIES A MINIMUM OF TWO (2) WEEKS IN ADVANCE OF CONSTRUCTION OPERATIONS IN THE VICINITY OF PROPOSED UTILITIES AT HIS OWN EXPENSE.
- CONTRACTOR SHALL NOTIFY THE FOLLOWING UTILITIES OR AGENCIES AT LEAST FIVE (5) WORKING DAYS BEFORE STARTING WORK SHOWN ON THESE PLANS:
 STATE HIGHWAY ADMINISTRATION - 531-5533
 BALTIMORE GAS & ELECTRIC COMPANY - UNDERGROUND ELECTRIC DISTRIBUTION CUSTOMER SERVICE-685-0123
 BALTIMORE GAS & ELECTRIC COMPANY - UNDERGROUND GAS DISTRIBUTION CUSTOMER SERVICE-685-0123
 ENGINEERING - "DAMAGE CONTROL" - 234-5621
 MISS UTILITY - 1-559-0100
 CHESAPEAKE & POTOMAC (CAP) TELEPHONE COMPANY - 725-9976
 AMERICAN TELEPHONE AND TELEGRAPH - CABLE LOCATION DIVISION - 393-3553
 COLONIAL PIPELINE COMPANY - 795-1390
 BUREAU OF UTILITIES HOWARD COUNTY - 992-2366
- TREES ARE TO BE PROTECTED FROM DAMAGE TO MAXIMUM EXTENT. TREES LOCATED WITHIN THE CONSTRUCTION STRIP ARE NOT TO BE REMOVED OR DAMAGED BY THE CONTRACTOR.
- CONTRACTOR SHALL REMOVE TREES, STUMPS AND ROOTS ALONG LINE OF EXCAVATION AS DIRECTED BY THE ENGINEER. PAYMENT FOR SUCH REMOVAL SHALL BE INCLUDED IN THE UNIT PRICE BID FOR CONSTRUCTION OF THE MAIN.
- PLACE REGULATION "MEN WORKING" AND WARNING SIGNS AS REQUIRED TO COMPLY WITH MARYLAND STATE HIGHWAY ADMINISTRATION MANUAL OF TRAFFIC CONTROL FOR HIGHWAY CONSTRUCTION AND MAINTENANCE OPERATIONS.
- ALL WATER MAINS TO BE C.I.P. OR D.I.P. UNLESS OTHERWISE NOTED.
- TOP OF ALL WATER MAINS TO HAVE A MINIMUM OF 3 1/2" COVER UNLESS OTHERWISE NOTED.
- VALVES ADJACENT TO TREES SHALL BE STRAPPED TO TREES.
- BLOCK ALL FITTINGS WITH CONCRETE.
- BURY LINE ELEVATIONS ON FIRE HYDRANTS SHALL BE SET TO THE ELEVATIONS SHOWN ON THE DRAWINGS. ALL FIRE HYDRANTS SHALL BE STRAPPED AND BUTTRESSED WITH CONCRETE IN ACCORDANCE WITH STANDARD DETAILS. SOIL AROUND THE FIRE HYDRANT TO BE COMPACTED IN ACCORDANCE WITH SECTIONS 10.03 AND 10.08 OF THE STANDARD SPECIFICATIONS.
- ALL WATER HOUSE CONNECTIONS SHALL BE FOR AN INSIDE METER SETTING.
- THE CONTRACTOR SHALL NOT OPERATE ANY WATER MAIN VALVES ON THE EXISTING SYSTEM.
- FOR ALL COPPER WATER HOUSE CONNECTIONS, UTILIZE FLARED TYPE FITTINGS ONLY.
- ALL SEWER MAINS SHALL BE C.S.P.X., R.C.S.P., V.C.P.X., A.C.P. CLASS 2400 OR PVC UNLESS OTHERWISE NOTED.
- THE CONTRACTOR SHALL PROVIDE A JOINT IN ALL SEWER MAINS WITHIN 2'-0" OF EXTERIOR MANHOLE WALL.
- ALL MANHOLES SHALL BE 4'-0" INSIDE DIAMETER, UNLESS OTHERWISE NOTED.
- FORCE MAINS SHALL BE D.I.P. ONLY.
- MANHOLES SHOWN WITH 12" AND 16" WALLS ARE BRICK MANHOLES ONLY.
- MANHOLES DESIGNATED W.T. IN PLAN AND PROFILE SHALL HAVE WATER TIGHT FRAME AND COVERS. STANDARD DETAIL G.S.52 WHERE WATER TIGHT MANHOLE FRAME AND COVER IS USED, SET TOP OF FRAME 1'-6" ABOVE FINISHED GRADE, STANDARD DETAIL G.S.41.
- HOUSE(S) WITH THE SYMBOL "C.N.S." INDICATES THAT CELLAR CAN NOT BE SERVED.
- SEDIMENT CONTROL MEASURES FOR THIS CONTRACT WILL BE IMPLEMENTED IN ACCORDANCE WITH THE STANDARD SPECIFICATIONS AND ALSO AS SHOWN ON SEDIMENT CONTROL PLAN 90P 05-151-C.



THIS DEVELOPMENT PLAN IS APPROVED FOR EROSION AND SEDIMENT CONTROL BY THE HOWARD SOIL CONSERVATION DISTRICT.
 APPROVED: *Stephen L. Hahn* 6/14/85
 HOWARD SOIL CONSERVATION DISTRICT DATE

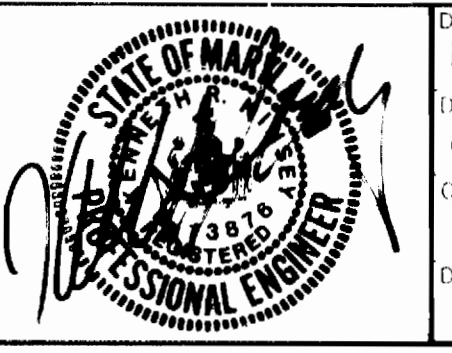
REVIEW FOR HOWARD COUNTY SOIL CONSERVATION DISTRICT AND MEETS TECHNICAL REQUIREMENTS.
Tom McHetta 6/14/85
 U.S. SOIL CONSERVATION SERVICE DATE

PROFILES
 SCALE: HORIZ: 1"=50'
 VERT: 1"=5'

DEPARTMENT OF PUBLIC WORKS
 HOWARD COUNTY, MARYLAND
Wm. F. Neuman 6-11-85
 DIRECTOR OF PUBLIC WORKS DATE

Robert R. Babin 6-17-85
 CHIEF ENGINEER DATE

DAFT - McCUNE - WALKER, INC.
 ENGINEERS AND ARCHITECTS
 1000 W. BROADWAY
 ANNAPOLIS, MD 21404



DESIGN BY: R.A.B.
 DRAWN BY: C.L.M.
 CHECKED BY: R.A.B.
 DATE: 5/8/85

PLAN AND PROFILE
 OF
WATER AND SEWER MAINS

COLUMBIA
 TOWN CENTER
 SECTION 7 AREA 7
 PARCEL F-2
 ELECTION DISTRICT NO. 5
 CONTRACT NO. 24-1355-D

SCALE AS SHOWN
 SHEET 1 OF 1