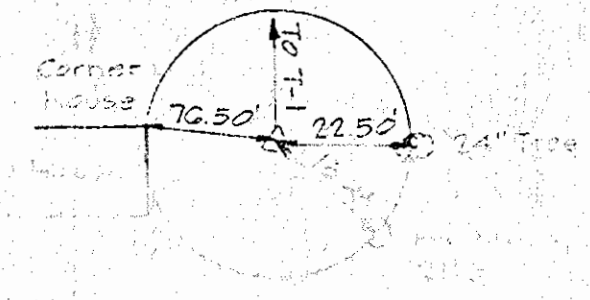
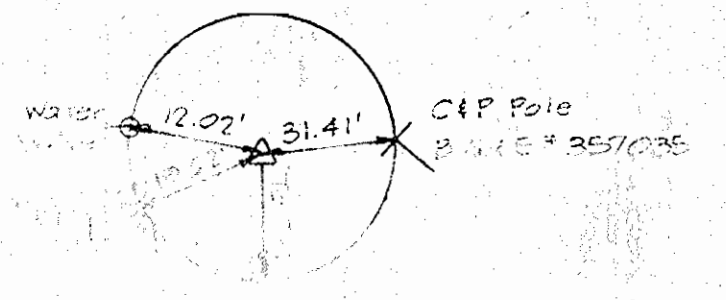


BENCH MARK
 BM 7-17
 8" x 8" Spike in base of B.G.V.E.
 Elevation: 436.04

Probable Location of House
 C.E. = 436.61

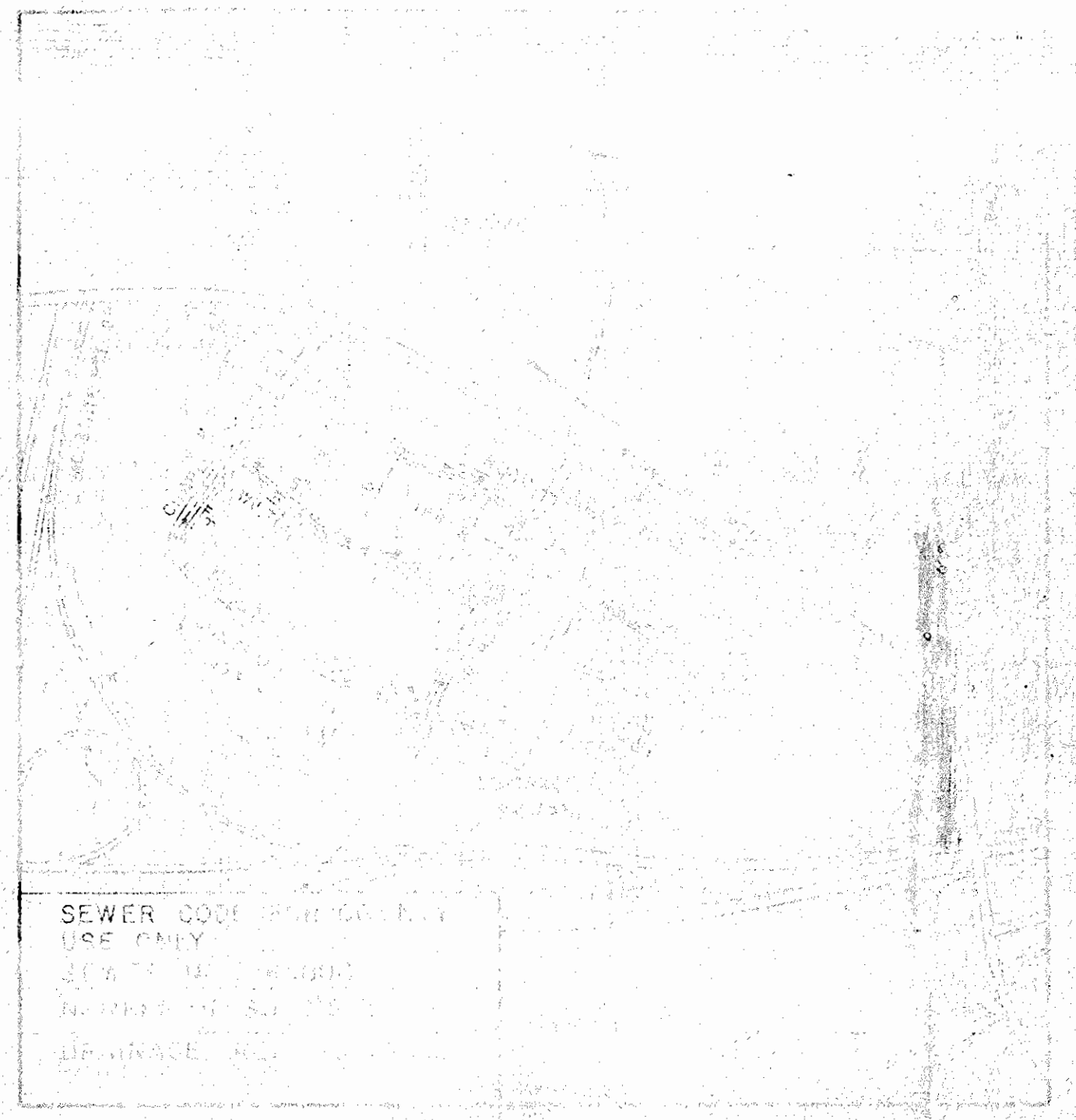


ITEM	ESSENTIAL	AMOUNT	MATERIAL	SUPPLIER
8" S.C.	115'	1.19	2-F	PVC
6" S.H.C.				

U.S. SOIL CONSERVATION SERVICE
 This development plan is approved for erosion and sediment control by the Howard County Soil Conservation District.

DEVELOPER'S CERTIFICATION
 I, the undersigned, certify that all development and construction work herein shown is in accordance with the provisions of the Howard County Department of Public Works Approved Training Program for the Control of Sediment and Erosion before beginning the project.

ENGINEER'S CERTIFICATION
 I certify that this plan is a true and correct statement of the facts and conditions of the site and is in accordance with the requirements of the Howard County Soil Conservation District.

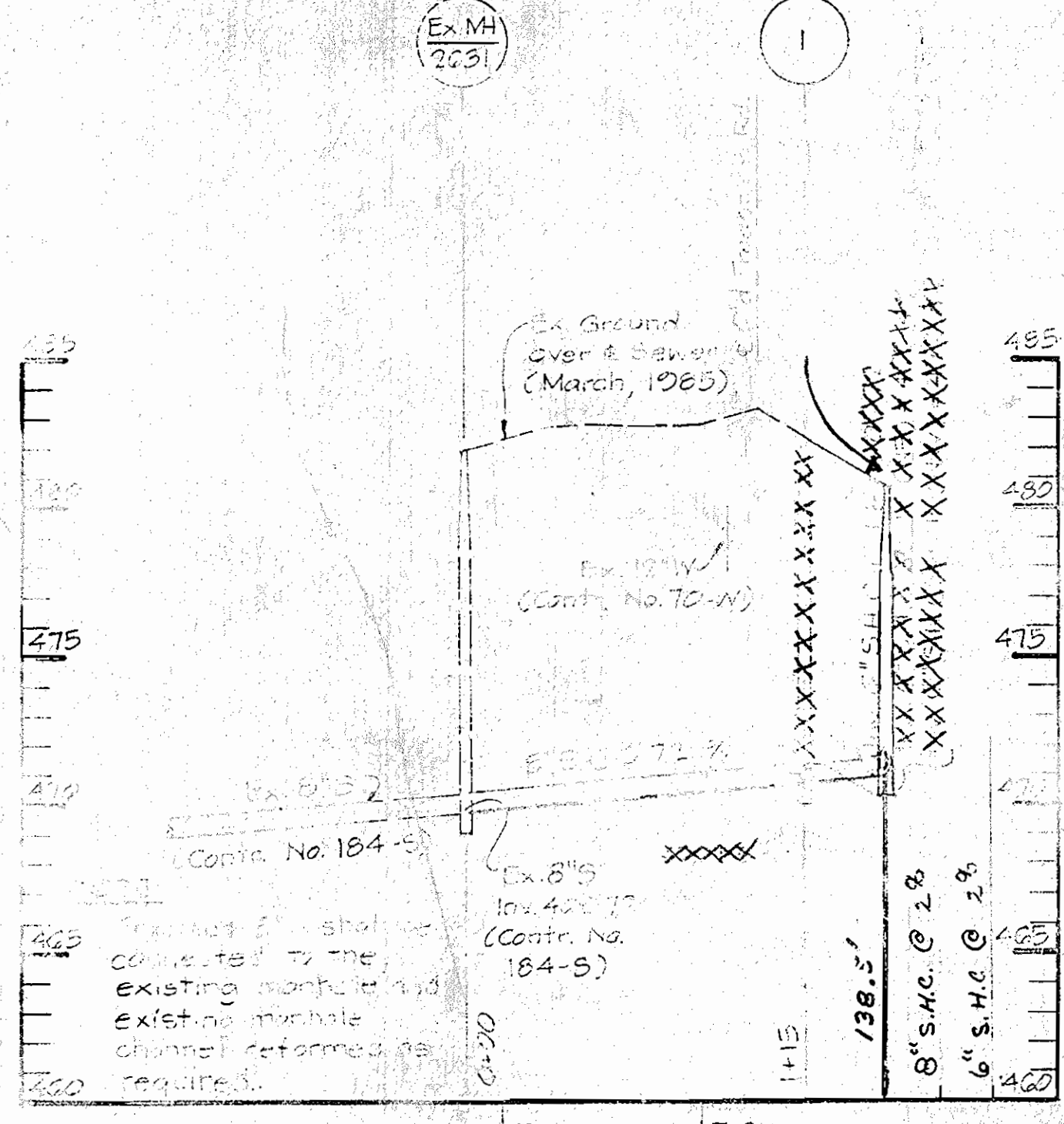


PLAN
 Scale: 1"=50'

SEDIMENT CONTROL NOTES

- Minimum of 24 hours notice must be given to the Howard Co. Office of Inspection and Permits prior to the start of any construction. (992-2437)
- All vegetative and structural measures are to be installed according to the provisions of this plan and are to be in compliance with 17B3 Maryland Standards and Specifications for Soil Erosion and Sediment Control.
- Temporary stabilization shall be equipped with a) a) temporary seeding and mulch, b) temporary seeding and mulch, c) temporary seeding and mulch, d) temporary seeding and mulch, e) temporary seeding and mulch, f) temporary seeding and mulch, g) temporary seeding and mulch, h) temporary seeding and mulch, i) temporary seeding and mulch, j) temporary seeding and mulch, k) temporary seeding and mulch, l) temporary seeding and mulch, m) temporary seeding and mulch, n) temporary seeding and mulch, o) temporary seeding and mulch, p) temporary seeding and mulch, q) temporary seeding and mulch, r) temporary seeding and mulch, s) temporary seeding and mulch, t) temporary seeding and mulch, u) temporary seeding and mulch, v) temporary seeding and mulch, w) temporary seeding and mulch, x) temporary seeding and mulch, y) temporary seeding and mulch, z) temporary seeding and mulch.
- All sediment traps/basins shown must be fenced and warning signs posted around their perimeter in accordance with Vol. I, Chapter 12, of the Howard County Design Manual, Storm Drainage.
- Excavated areas must be stabilized within the time period specified herein in accordance with the 17B3 Maryland Standards and Specifications for Soil Erosion and Sediment Control for permanent seeding (Sec. 51) and temporary seeding (Sec. 52) and mulching (Sec. 52). Temporary stabilization with mulch alone can only be done when recommended seeding dates do not allow for proper germination and establishment of grasses.
- All sediment control structures are to remain in place and are to be maintained in operative condition until permission for their removal has been obtained from the Howard County Sediment Control Inspector.
- Any sediment control practice which is disturbed by grading activity for placement of utilities must be repaired on the same day of disturbance.
- Additional sediment controls must be provided, if deemed necessary by the Howard County Department of Public Works sediment control inspector.
- The Contractor shall not pump from excavated areas directly into the Howard County Storm Drainage System or any Natural Water Course. Where ground water is encountered during construction, the Contractor shall provide Permits or Excavated Sediment Traps to prevent Silted Ground Water from entering Storm Drainage Systems or Natural Waterways.
- All Excavated material shall be placed on the high side of the trench wherever possible, and confined to an area where it will not obstruct the normal flow of drainage courses.

ORCHARD AVENUE



PROFILE
 Scale: Hor. 1"=50', Vert. 1"=5'

GENERAL NOTES

- Approximate location of existing mains are shown. The Contractor shall take all necessary precautions to protect existing mains and Services and maintain same until supply.
- All horizontal Controls are based on Maryland State Coordinates.
- All Vertical Controls are based on U.S.M.S. Datum.
- All Pipe Elevations shown are in feet Elevations.
- Clear all utilities by a minimum of 2'.
- For Details not shown on the Drawings, and for Materials and Construction Methods, use the Howard County Design Manual, Volume IV, Standard Specifications and Details for Construction. The Contractor shall have a copy of Volume IV on the Job.
- Where Test Pits have been made on Existing Utilities, they are noted by the Symbol [] at the location of the Test Pit. A note or notes containing the Results of the Test Pit or Pits is indicated on the Drawings. Existing Utilities in the Vicinity of the Proposed Work for which Test Pits have not been made shall be verified by the Contractor to his own satisfaction. Any damage to existing facilities due to the Contractor's negligence shall be repaired at the Contractor's expense.
- Contact the following utilities as a minimum, at least 15 working days before starting work shown on these Plans:
 State Highway Administration - 591-5523
 Baltimore Gas & Electric Company - Contractor Services - 361-2505
 Baltimore Gas & Electric Company - Underground Damage Control - 234-5621
 Baltimore Gas & Electric Company - Trouble Shooting - 298-9019
 "Miss Utility" - 1-559-0100
 Colonial Pipeline Company - 795-1390
 Bureau of Utilities, Howard County Department of Public Works - 992-2566
- Trees and Shrubs to be protected from Damage to Maximum Extent. Trees and Shrubs within the Construction Strip are not to be Removed or Damaged by the Contractor.
- Contractor shall remove Trees, Stumps and Roots along the line of Excavation as directed by the Engineer. Payment for such Removal shall be indicated in the Unit Price Bid for the Construction of the Main.
- All Sewer Mains shall be D.I.P., R.C.S.P., V.C.P.X., A.C.P. Class 2400 or PVC unless otherwise noted.
- The Contractor shall provide a Joint in all Sewer Mains within 2'-0" of Exterior Manhole Wall.
- All Manholes shall be 4'-0" Inside Diameter unless otherwise noted.
- Manholes shown with 12" and 18" Walls are for Brick Manholes Only.
- Manholes designated W.T. in Plan and Profile shall have Watertight Frames and Covers, Standard Detail G5.52 Where Watertight Manhole Frames are not shown, use Detail G5.52. Also, Finish Grade unless otherwise noted on the Drawings.
- House(s) with the Symbol "C.N.S." Indicates that Category "C" not to be Served.

AS-BUILT *Second Original Made 2/25/86*

DEPARTMENT OF PUBLIC WORKS
 HOWARD COUNTY, MARYLAND
 DIRECTOR OF PUBLIC WORKS
 CHIEF ENGINEER

KIDDE CONSULTANTS, INC.
 CONSULTING ENGINEERS
 BALTIMORE, MARYLAND

DES: J.M.G.	
CHK: J.M.G.	
CHK: W.E.H.	
DATE: 10/1/85	

PLAN AND PROFILE
 OF SEWER EXTENSION

ORCHARD AVENUE SEWER EXTENSION
 CAPITAL PROJECT NO. S-6665
 CONTRACT NO. 10-1362
 ELECTION DISTRICT NO. 2
 HOWARD COUNTY, MARYLAND