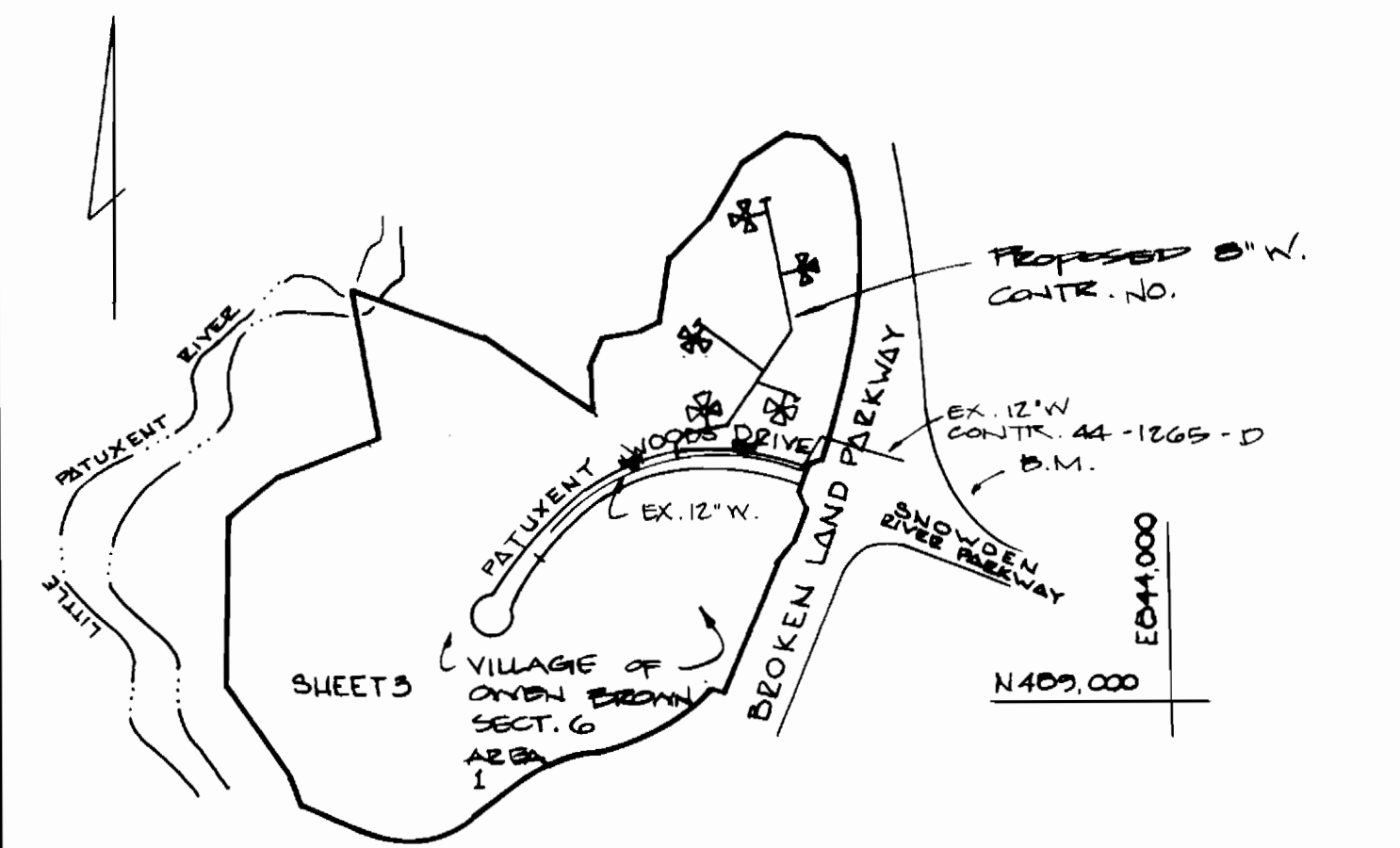
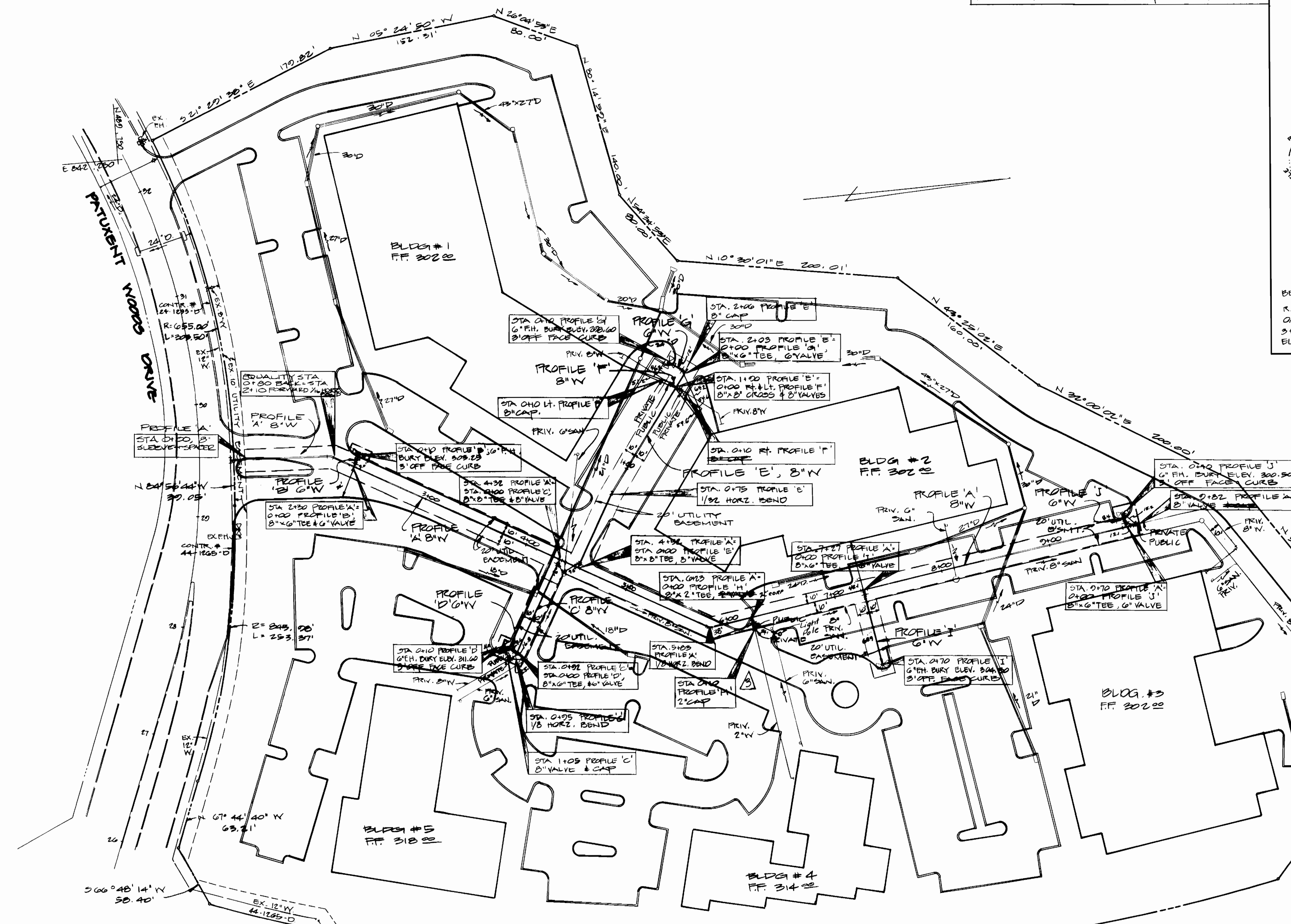


TYPE OF BLDG'S = OFFICE & WAREHOUSE  
 NUMBER OF LOTS = 1  
 NUMBER OF WATER HOUSE CONNECTIONS = 5  
 NUMBER OF SEWER HOUSE CONNECTIONS = 1  
 DRAINAGE AREA = LITTLE PATUXENT



**VICINITY MAP**  
 1" = 600'  
 BENCH MARK #M-3  
 R.R. SPIKE IN 10' TWIN OAK, 100' RT. OF STA. 3+30, P.I. \*K 001 + 002 ELEV. 342.88  
 WATER CODE: E-13  
 SEWER CODE: 5290000



**GENERAL NOTES**

1. Approximate Location of Existing Mains Are Shown. The Contractor Shall Take All Necessary Precautions To Protect Existing Mains And Services And Maintain Uninterrupted Supply. Any Damage Incurred Shall Be Replaced Immediately To The Satisfaction Of The Engineer At The Contractor's Expense.
2. All Horizontal Controls Are Based On Maryland State Coordinates.
3. All Vertical Controls Are Based On U.S.G.S. Data.
4. All Pipe Elevations Shown Are Invert Elevations.
5. Clear All Utilities By A Minimum Of 6'. Clear All Poles By 2'-0" Minimum Or Tunnel As Required. The Owner Has Contacted The Utilities Companies And Has Made Arrangements For Bracing Of Poles As Shown On The Drawings. In The Event The Contractor's Work Requires The Bracing Of Additional Poles, Any Cost Incurred By The Owner For The Bracing Of Additional Poles Or Damages Shall Be Deducted From Money Owed The Contractor. The Contractor Shall Coordinate With The Utility Companies To Schedule The Bracing Of Poles.
6. For Details Not Shown On The Drawings, And For Materials And Construction Methods, Use Howard County Design Manual, Volume IX, Standard Specifications And Details For Construction. The Contractor Shall Have A Copy Of Vol. IX On The Job.
7. Where Test Pits Have Been Made On Existing Utilities, They Are Noted By The Symbol At The Location Of The Test Pit. A Note Or Notes Containing The Results Of The Test Pit Or Pits Is Included On The Drawings. Existing Utilities In The Vicinity Of The Proposed Work For Which Test Pits Have Not Been Dig Shall Be Located By The Contractor Two Weeks In Advance Of Construction Operations At His Own Expense.
8. Contractor Shall Notify The Following Utilities At Least Five Working Days Before Starting Work Shown On These Plans:
  - a. State Highway Administration - 531-5555
  - b. Baltimore Gas & Electric Co. Underground Damage Control - 234-5621
  - c. Baltimore Gas & Electric Co. Trouble Shooting - 228-3213
  - d. Miss Utility - 1-550-0100
  - e. Baltimore Gas & Electric Co. Contractor Services - 561-2505
  - f. Colonial Pipeline Co. 705-1300
  - g. Bureau Of Utilities, Howard County Department Of Public Works - 292-2344
9. Trees And Shrubs Are To Be Protected From Damage To Maximum Extent. Trees And Shrubs Located Within The Construction Strip Are Not To Be Removed Or Damaged By The Contractor.
10. Contractor Shall Remove Trees, Stumps, And Roots Along Line Of Excavation. Payment For Such Removal Shall Be Included In The Unit Price Bid For Construction Of The Main.
11. All Water Main To Be O.I.P. Unless Otherwise Noted.
12. Top Of All Water Mains To Have A Minimum Of 2'-6" Cover Unless Otherwise Noted.
13. Valves Adjacent To Ties Shall Be Strapped To Ties.
14. All Fitting Shall Be Buttressed Or Anchored With Concrete In Accordance With The Standard Details Unless Otherwise Noted.
15. Fire Hydrants Shall Be Set To The Dury Line Elevations Shown On The Drawings. All Fire Hydrants Shall Be Strapped And Buttressed With Concrete In Accordance With Standard Details. Soil Around The Fire Hydrant Shall Be Compacted In Accordance With Section 1003 Of The Standard Specifications.
16. The Contractor Shall Not Operate Any Water Main Valves On The Existing Water System.
17. All Sewer Mains Shall Be C.O.P.K., R.C.S.P., V.C.P.K., A.C.P. Class 2400, Or P.V.C. Unless Otherwise Noted.
18. The Contractor Shall Provide A Joint In All Sewer Mains Within 2'-0" Of Existing M.H. Walls.
19. All Manholes Shall Be 4'-0" Inside Diameter Unless Otherwise Noted.
20. Manholes Shown With 12" And 16" Walls Are Brick Manholes Only.
21. Manholes Designated W.T. In Plan And Profile Shall Have Water-tight Frame And Cover, Standard Detail 5-B.05. Where Water-tight Manhole Frame And Cover Is Used, Set Top Of Frame 1'-6" Above Finished Grade Unless Otherwise Noted On The Drawings.
22. Hubs (S) With The Symbol Indicates That Celler Cannot Be Served.
23. All Water House Connections Shall Be Inside Settings Unless Otherwise Noted.

QUANTITIES		
ITEM	ESTIMATED AS BUILT	MATERIAL/SUPPLIER
8" 1/2 BEND	1 EA.	1 EA. GREEN PIPE / CL250
8" D.P. SEWER	10 L.F.	10 L.F. " " / CL250
8" SUBMERG. & SPACER	1 EA.	1 EA. " " / CL250
8" 1/2 BEND	2 EA.	2 EA. " " / CL250
8" 1/2 BEND	1 EA.	1 EA. " " / CL250
8" X 8" TEE	3 EA.	3 EA. " " / CL250
8" CROSS	1 EA.	1 EA. " " / CL250
8" X 6" TEE	5 EA.	5 EA. " " / CL250
8" D.P. WATER	1193 L.F.	1193 L.F. " " / CL250
6" D.P. WATER	112 L.F.	112 L.F. " " / CL250
6" F.H. (5 BURIED)	5 EA.	5 EA. U.S. PIPE & Foundry
8" CAP	6 EA.	6 EA. GREEN PIPE / CL250

REVIEWED FOR HOWARD SOIL CONSERVATION DISTRICT AND MEETS TECHNICAL REQUIREMENTS  
 SIGNATURE: *[Signature]* DATE: 4-2-85  
 U.S. SOIL CONSERVATION SERVICE

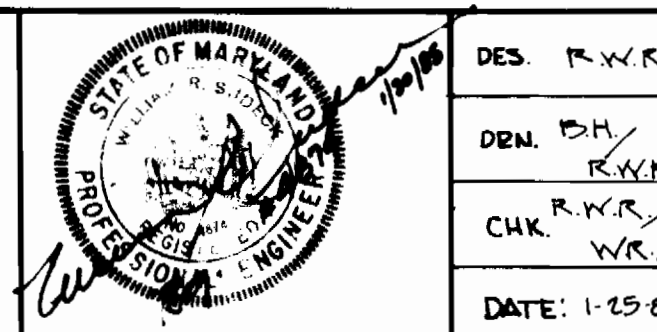
THIS DEVELOPMENT PLAN IS APPROVED FOR SOIL EROSION AND SEDIMENT CONTROL BY HOWARD SOIL CONSERVATION DISTRICT.  
 APPROVED: *[Signature]* DATE: 4/2/85  
 HOWARD SOIL CONSERVATION SERVICE

SEDIMENT CONTROL MEASURES FOR THIS CONTRACT WILL BE IMPLEMENTED IN ACCORDANCE WITH ARTICLE 15 OF THE STANDARD SPECIFICATIONS AND SDP 85-102C

**PLAN**  
 1" = 50'

DEPARTMENT OF PUBLIC WORKS  
 HOWARD COUNTY, MARYLAND  
 DIRECTOR OF PUBLIC WORKS DATE: 4-11-85  
 CHIEF, BUREAU OF ENGINEERING DATE: 4-11-85

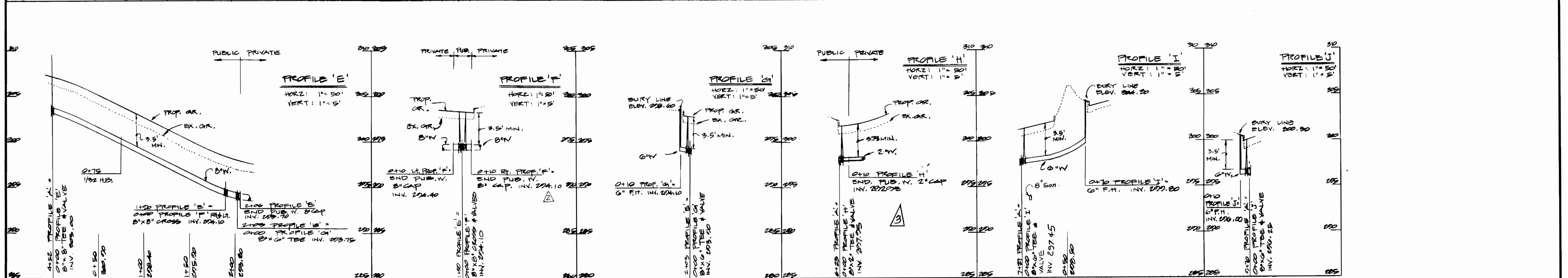
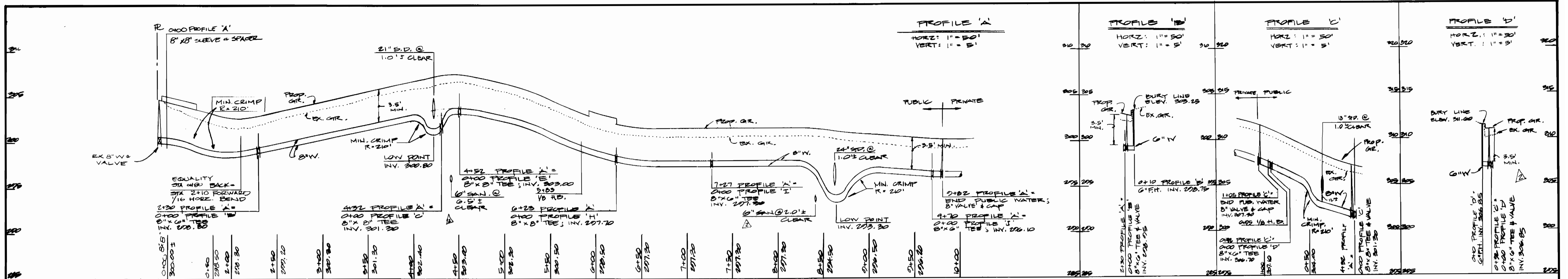
WILLIAM R. SUDECK  
 AND ASSOCIATES, INC.  
 112 SOUTH MAIN STREET  
 BEL AIR, MARYLAND 21034  
 836-5895 879-4995



DES. R.W.R.	CHK. R.W.R.	DATE: 1-25-85
1	2	3
REV. PLAN - STATIONING PER EX. WATER SERVICE	REV. ELEV. FOR SA. HEALTH DEPT. VOL. 11 IN MARCH 1985	REV. PROFILE 'H'

PLAN & PROFILE FOR PROPOSED WATER MAIN  
 CONTRACT NO. 24-1242-D  
 600' SCALE MAP NO. \_\_\_\_\_ BLOCK NO. \_\_\_\_\_

VILLAGE OF OWEN BROWN SECTION 6 AREA 1 PARCEL 'B' COLUMBIA  
 HOWARD COUNTY, MARYLAND ELECTION DIST. # 6  
 SCALE AS SHOWN SHEET 1 OF 2  
 JANUARY 23, 1985



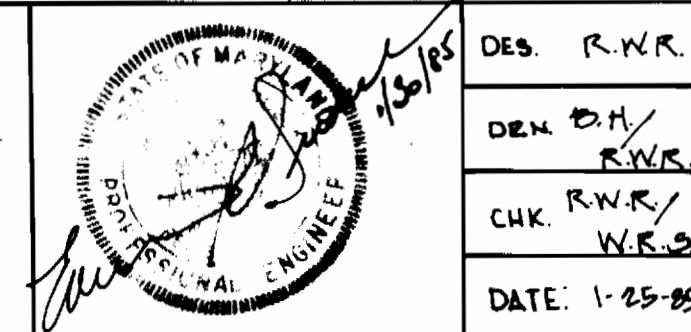
REVIEWED FOR HOWARD SOIL CONSERVATION DISTRICT AND MEETS TECHNICAL REQUIREMENT  
 SIGNATURE: *J. H. H. H.* DATE: 4-2-85  
 U.S. SOIL CONSERVATION SERVICE

THIS DEVELOPMENT PLAN IS APPROVED FOR SOIL EROSION AND SEDIMENT CONTROL BY HOWARD SOIL CONSERVATION DISTRICT  
 APPROVED: *Stephen L. Kels* DATE: 4/3/85  
 HOWARD COUNTY SOIL CONSERVATION SERVICE

SEDIMENT CONTROL MEASURES FOR THIS CONTRACT WILL BE IMPLEMENTED IN ACCORDANCE WITH ARTICLE 15 OF THE STANDARD SPECIFICATION AND S.D.P. 85-100

DEPARTMENT OF PUBLIC WORKS  
 HOWARD COUNTY, MARYLAND  
 DIRECTOR OF PUBLIC WORKS: *W. E. N...* DATE: 4-12-85  
 CHIEF, BUREAU OF ENGINEERING: *W. E. N...* DATE: 4-11-85

WILLIAM E. SUDECK AND ASSOCIATES  
 112 SOUTH MANN STREET  
 BELAIR, MARYLAND 21014  
 830-5033 879-4353



DES. R.N.R.	REV. Δ	REV. PROFILE 'A' PER PLAN ALIGNMENT	6885
	WES Δ	REV PROFILE 'H'	
DEM. B.M./R.W.S.			
CHK. R.W.S./W.E.S.			
DATE: 1-25-85	BY: <i>WES</i>	REVISION	DATE

PLAN & PROFILE FOR PROPOSED WATER MAIN  
 CONTRACT NO. 24-1342-D  
 600' SCALE MAP NO. BLOCK NO.

VILLAGE OF OWEN BROWN SECTION 6 AREA 1 PARCEL 'B' COLUMBIA  
 HOWARD COUNTY, MARYLAND ELECTION DIST. 80  
 JANUARY 23, 1985

SCALE AS SHOWN  
 SHEET 2 OF 2