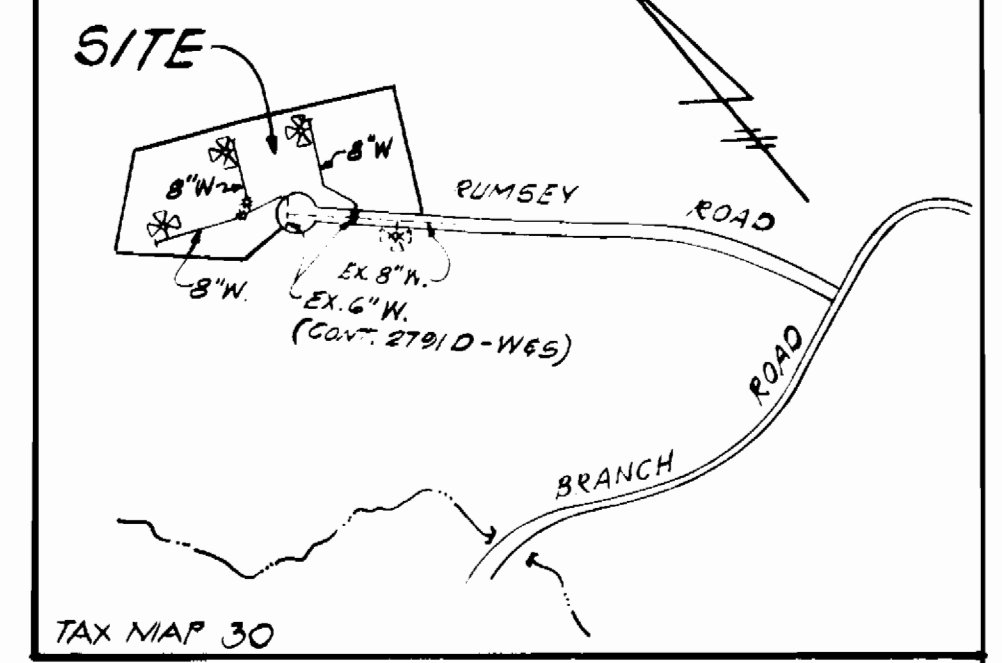


BENCH MARK:  
TOP OF FIRE HYDRANT ELEV. 429.14

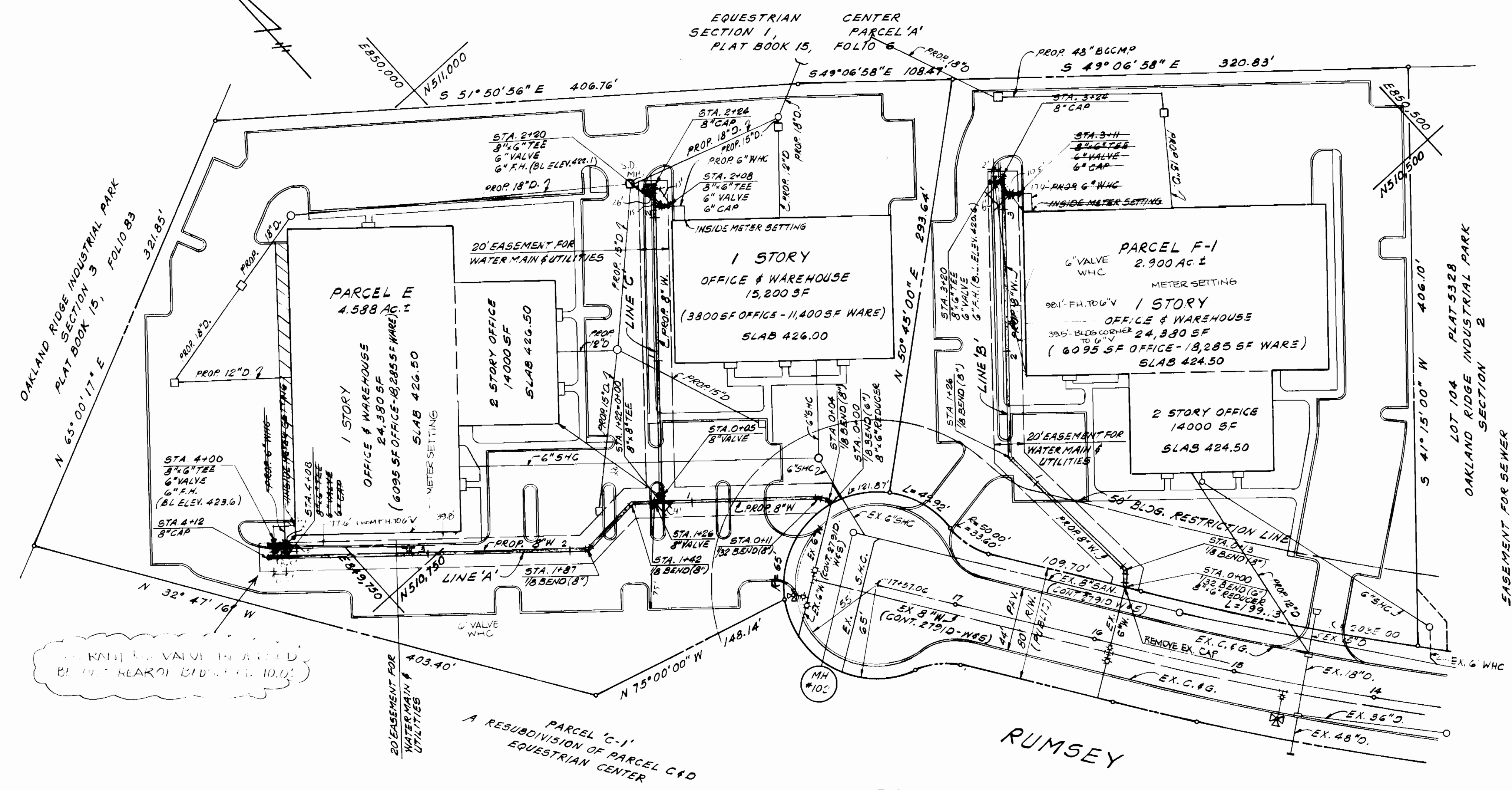
WATER CODE FOR COUNTY USE  
WATER NO.  
TYPE OF BUILDING - COMMERCIAL  
NO. OF LOTS - 2  
NO. OF WATER HOUSE CONNECTIONS - 3  
DRAIN. AREA - LITTLE PATENT



LOCATION MAP  
SCALE: 1"=600'

GENERAL NOTES

- APPROXIMATE LOCATION OF EXISTING MAINS ARE SHOWN. THE CONTRACTOR SHALL TAKE ALL NECESSARY PRECAUTIONS TO PROTECT EXISTING MAINS AND SERVICES & MAINTAIN UNINTERRUPTED SUPPLY. ANY DAMAGE INCURRED SHALL BE REPAIRED IMMEDIATELY TO THE SATISFACTION OF THE ENGR. AT THE CONTRACTOR'S EXPENSE.
- ALL HORIZONTAL CONTROLS ARE BASED ON MARYLAND STATE COORDINATES.
- ALL VERTICAL CONTROLS ARE BASED ON U.S.G.S. DATA.
- ALL PIPE ELEVATIONS SHOWN ARE INVERT ELEVATIONS.
- CLEAR ALL UTILITIES BY A MINIMUM OF 6". CLEAR ALL POLES 2'-0" MIN. OR TUNNEL AS REQUIRED.
- FOR DETAILS NOT SHOWN ON DWGS, AND FOR MATERIALS AND CONSTRUCTION METHODS, USE HOWARD COUNTY DESIGN MANUAL, VOLUME IX, STANDARD SPECIFICATIONS AND DETAILS FOR CONSTRUCTION. THE CONTRACTOR SHALL HAVE A COPY OF VOLUME IX ON THE JOB.
- CONTRACTOR SHALL NOTIFY THE FOLLOWING UTILITIES OR AGENCIES AT LEAST FIVE (5) WORKING DAYS BEFORE STARTING WORK SHOWN ON THESE PLANS:  
STATE HIGHWAY ADMINISTRATION 531-5593  
BALTIMORE GAS & ELECTRIC CO. UNDERGROUND SERV. 531-5533  
BALTIMORE GAS & ELECTRIC CO. UNDERGROUND DAMAGE CONTROL - 234-5621  
BALTIMORE GAS & ELECTRIC CO. TROUBLE SHOOTING - 298-9013  
MISS UTILITY - 1-559-0100  
COLONIAL PIPELINE CO. - 795-1390  
BUREAU OF UTILITIES, HOWARD COUNTY DEPARTMENT OF PUBLIC WORKS 992-2366
- TREES AND SHRUBS TO BE PROTECTED FROM DAMAGE TO MAXIMUM 5' FEET. TREES AND SHRUBS LOCATED WITHIN THE CONSTRUCTION STRIP ARE NOT TO BE REMOVED OR DAMAGED BY THE CONTRACTOR.
- CONTRACTOR SHALL REMOVE TREES, STUMPS AND ROOTS ALONG LINE OF EXCAVATION. PAYMENT FOR SUCH REMOVAL SHALL BE INCLUDED IN THE UNIT PRICE BID FOR CONSTRUCTION OF THE MAIN.
- ALL WATER MAINS TO BE D.I.P. UNLESS OTHERWISE NOTED.
- TOPS OF ALL WATER MAINS TO HAVE A MINIMUM OF 3.5' COVER UNLESS OTHERWISE NOTED.
- VALVES ADJACENT TO TEES SHALL BE STRAPPED TO TEES.
- ALL FITTINGS SHALL BE BUTTRESSED OR ANCHORED WITH CONCRETE IN ACCORDANCE WITH THE STANDARD DETAILS UNLESS OTHERWISE PROVIDED FOR ON THE DRAWINGS.
- FIRE HYDRANTS SHALL BE SET TO THE SURVEY LINE ELEVATIONS SHOWN ON THE DRAWINGS. ALL FIRE HYDRANTS SHALL BE STRAPPED AND BUTTRESSED WITH CONCRETE IN ACCORDANCE WITH STANDARD DETAILS. SOIL AROUND THE FIRE HYDRANT SHALL BE COMPACTED IN ACCORDANCE WITH SECTION 1003 THE STANDARD SPECIFICATIONS.
- THE CONTRACTOR SHALL NOT OPERATE ANY WATER MAIN VALVES ON THE EXISTING WATER SYSTEM.
- WHERE TEST PITS HAVE BEEN MADE ON EXISTING UTILITIES, THEY ARE NOTED BY THE SYMBOL AT THE LOCATION OF THE TEST PIT. ANOTE OR NOTES CONTAINING THE RESULTS OF THE TEST PIT OR PITS INCLUDED ON THE DWGS. EXISTING UTILITIES IN THE VICINITY OF THE PROPOSED WORK FOR WHICH TEST PITS HAVE NOT BEEN DUG SHALL BE LOCATED BY THE CONTRACTOR TWO IN ADVANCE OF CONSTRUCTION OPERATIONS AT HIS OWN EXPENSE.

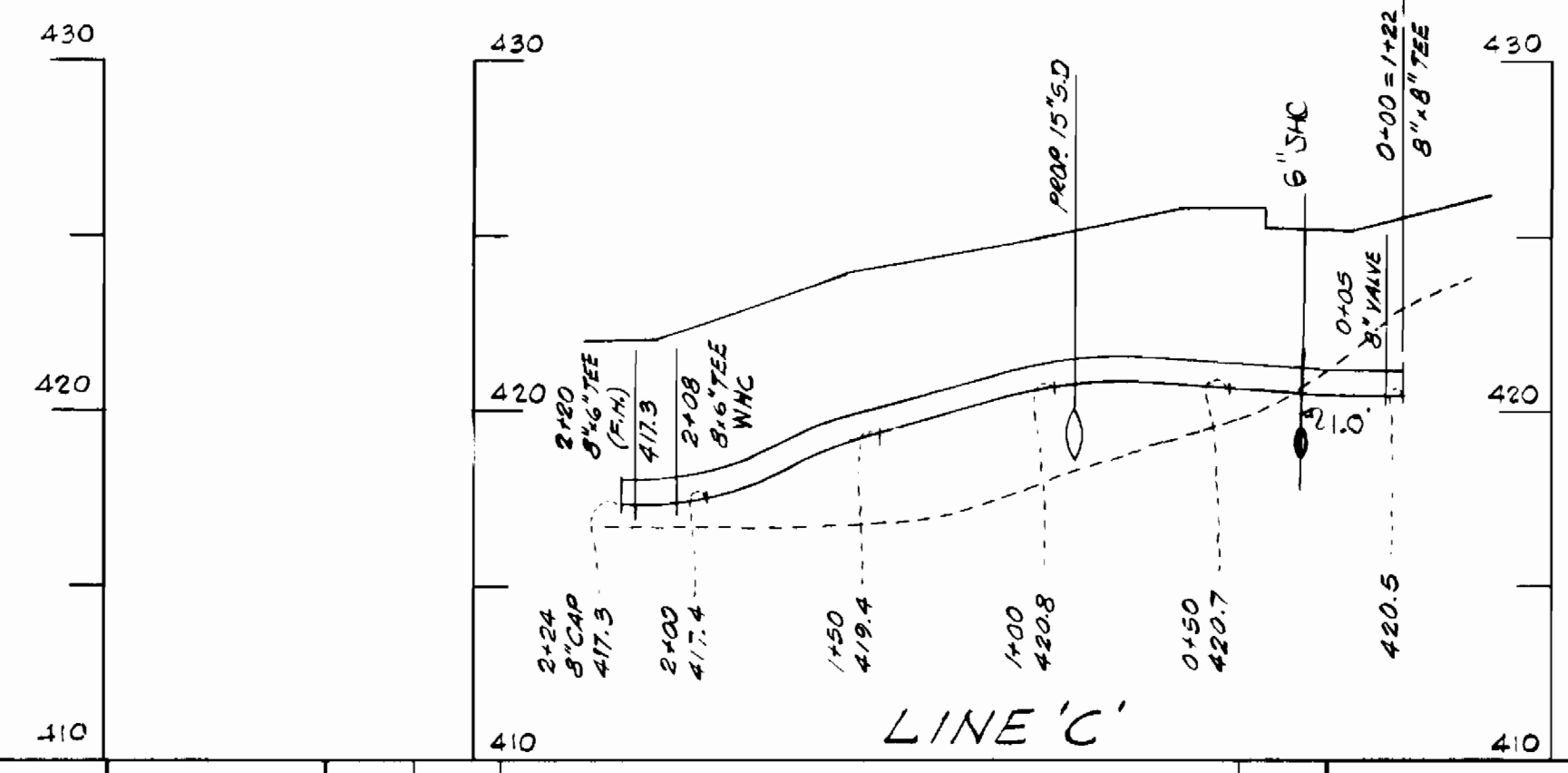
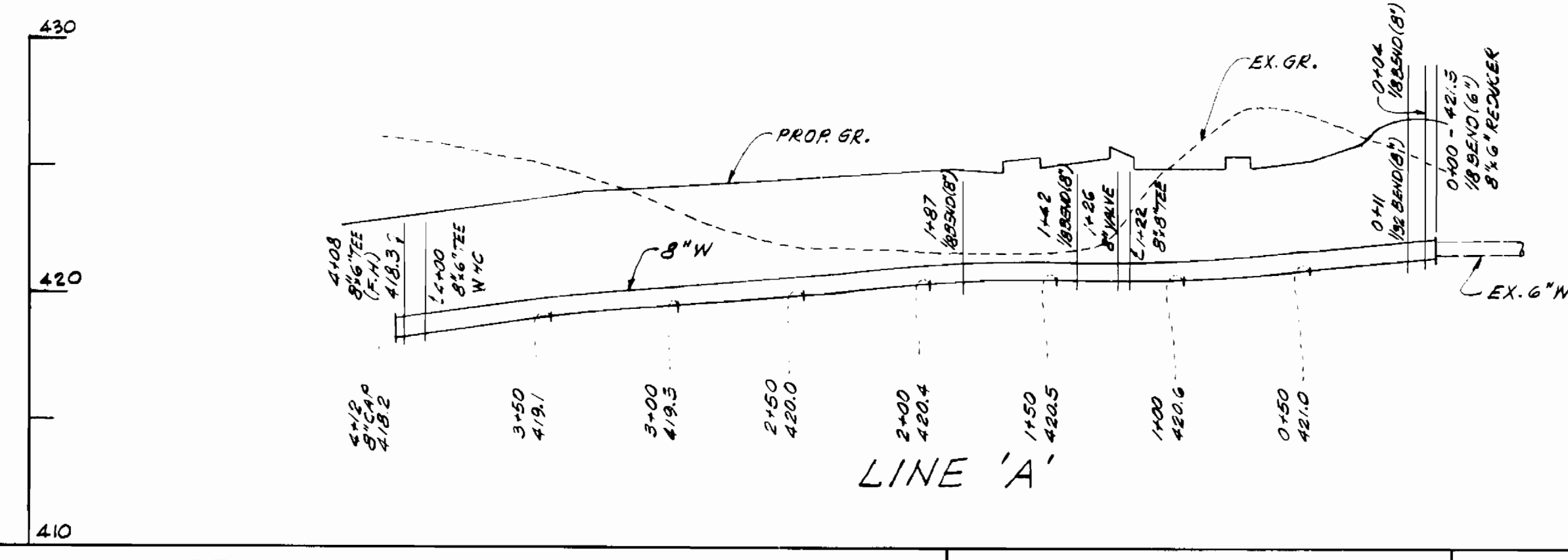
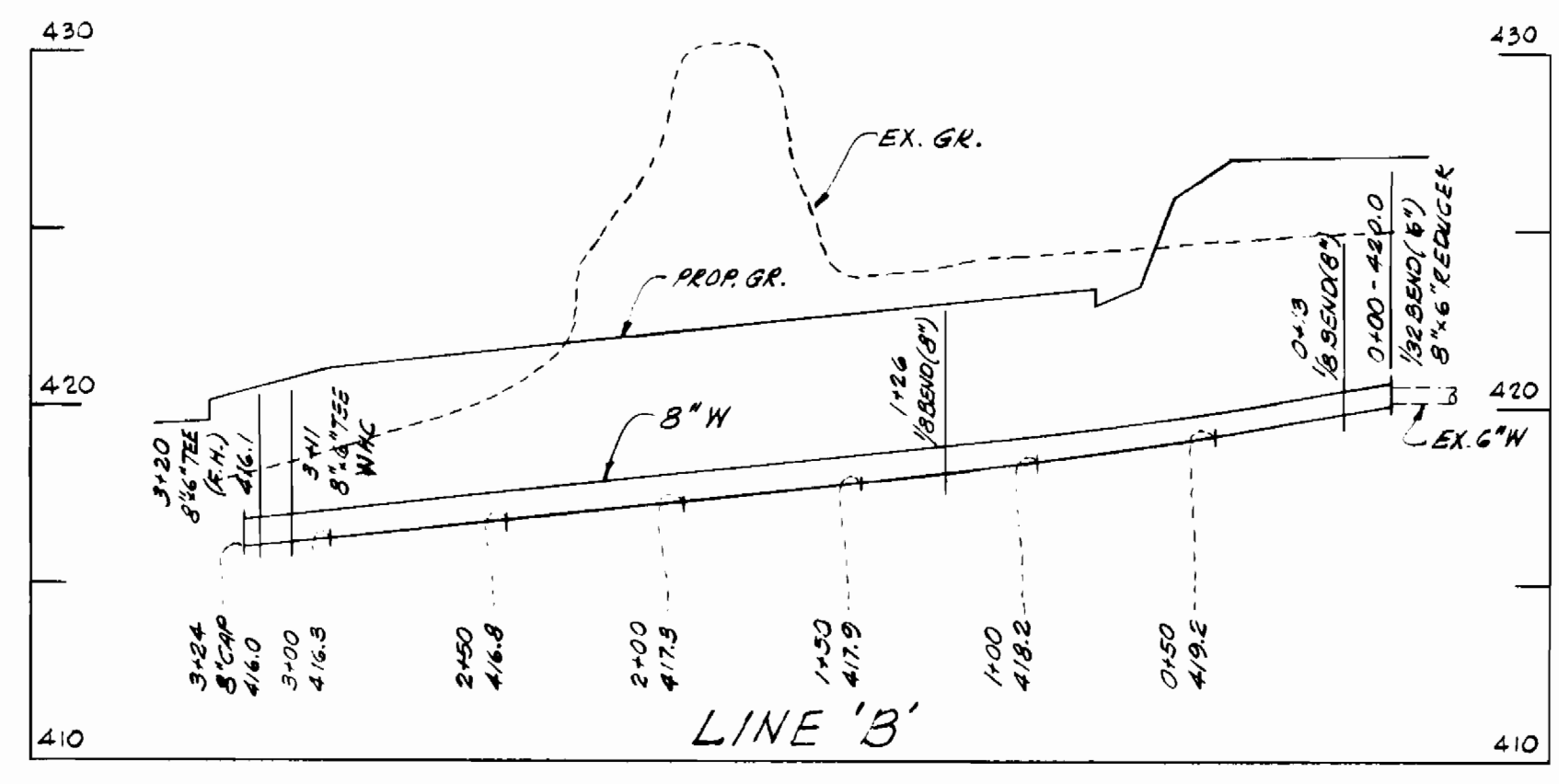


PLAN  
SCALE: 1" = 50'

QUANTITIES			
ITEM	BID	AS BUILT	MATERIAL/SUPPLIER
8" W	950 LF		U.S. PIPE/WATERWORKS, INC.
6" W	30 LF		
F.H.	3	3	
6" VALVE	3	3	
8" VALVE	2	2	

SEDIMENT CONTROL MEASURED FOR THIS CONTRACT WILL BE IMPLEMENTED IN ACCORDANCE WITH ARTICLE 15 OF THE STANDARD SPECIFICATIONS AND AS SHOWN ON SDP 85-128

PROFILES  
SCALE: HOR. 1" = 50',  
VER. 1" = 5'



DEVELOPER  
NORMAN ROCKWELL  
NORTHERN CHESAPEAKE BUILDERS  
7307 YORK ROAD  
BALTIMORE, MD. 21204

THESE PLANS FOR SMALL POND CONSTRUCTION SOIL EROSION & SEDIMENT CONTROL MEET THE REQUIREMENTS OF THE HOWARD SOIL CONSERVATION DISTRICT.

*Stephen L. Faulkner* 6/14/85  
HOWARD S.G.D. DATE

THESE PLANS HAVE BEEN REVIEWED FOR THE HOWARD SOIL CONSERVATION DISTRICT AND MEET THE TECHNICAL REQUIREMENTS FOR SMALL POND CONSTRUCTION, SOIL EROSION AND SEDIMENT CONTROL

*Jeanette H. ...* 6/14/85  
U.S. SOIL CONSERVATION SERVICE DATE

DEPARTMENT OF PUBLIC WORKS  
HOWARD COUNTY, MARYLAND

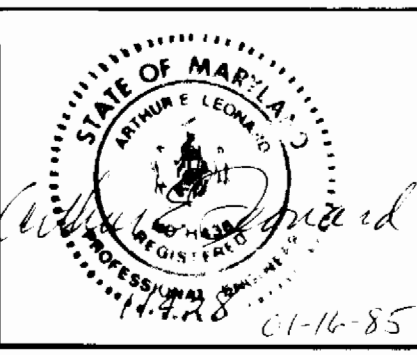
6-21-85  
DATE

6-21-85  
DATE

SURVEYORS & ENGINEERS  
HUDKINS ASSOCIATES, INC.

200 EAST JOPPA ROAD  
ROOM 101, SHELL BUILDING  
TOWSON, MARYLAND 21204

6-21-85  
DATE



DES: D.S.F.W.S.			
DRN: D.S.F.W.S.			
CHK: D.W.B.			
DATE:			
BY:			
NO.			
REVISION			
DATE			

PLAN AND PROFILE OF  
WATER MAIN

PARCELS E & F-1  
EQUESTRIAN CENTER  
PLAT NOS. 4035 & 5328  
ELECTION DIST. 2 HOWARD CO., MD.  
CONT. NO. 44-1338-0

SCALE AS SHOWN  
SHEET 1 OF 1