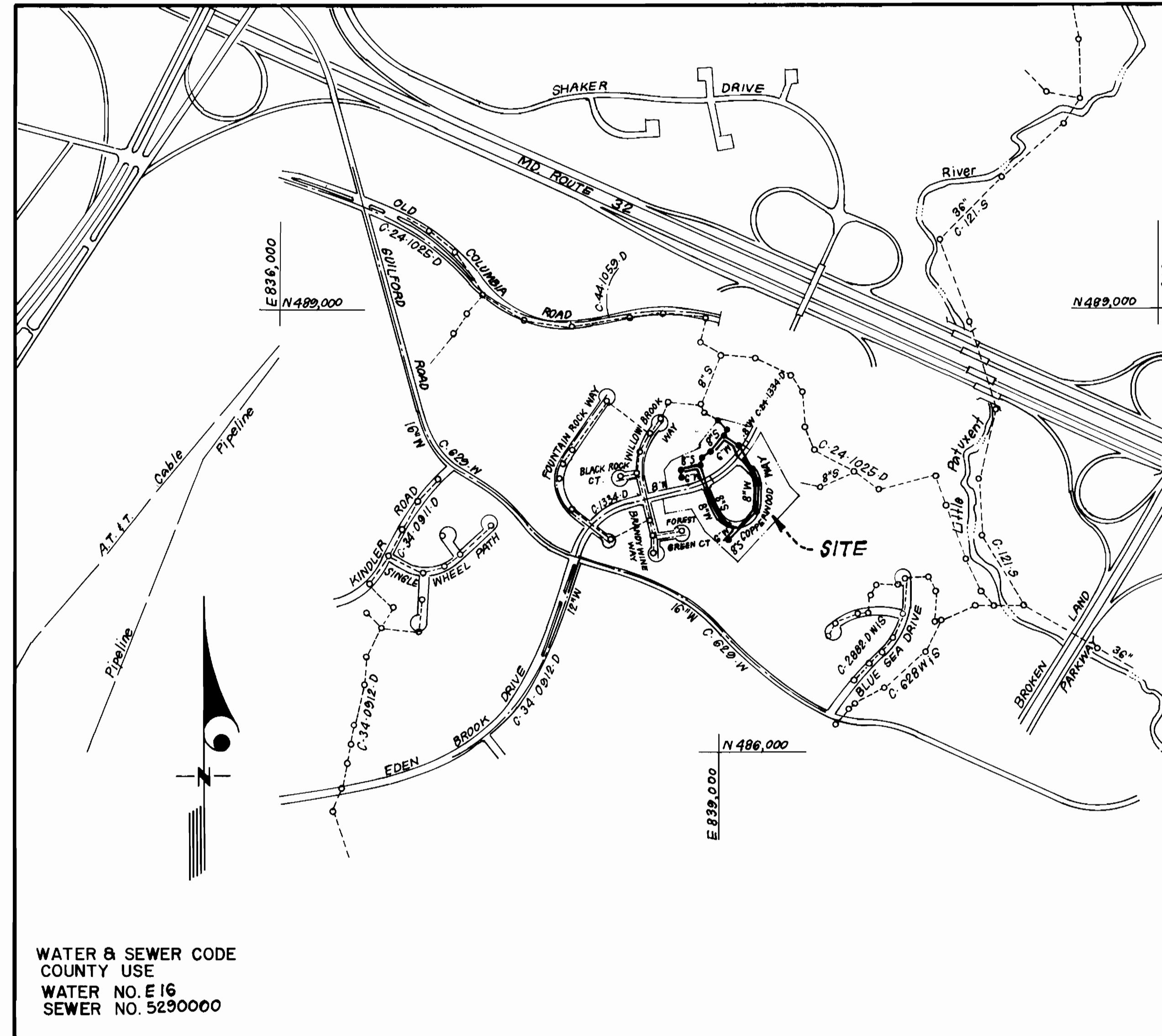


SEWER HOUSE CONNECTION TABLE

LOTS	Inv. @ R.	Min. C.	LOTS	Inv. @ R.	Min. C.
84/85	330.5	342.0	133/134	320.0	332.4
86/87	336.7	340.0	135/136	331.2	334.6
88/89	334.8	338.2	137/138	333.0	336.4
90/91	333.5	336.0	139/140	337.0	340.4
92/93	331.5	334.0	141/142	339.2	342.0
94/95	329.5	332.0	143/144	341.3	344.7
96	327.2	330.0	145/146	339.6	343.0
97	327.2	330.0	147/148	339.1	342.5
98/99	327.6	331.0	149/150	338.3	341.7
100/101	328.7	332.0	151/152	337.4	340.8
102/103	318.5	321.0	153/154	335.7	339.1
104/105	317.4	320.8	155/156	334.4	337.8
106/107	316.3	319.7	157/158	332.9	336.3
108/109	317.2	320.5	159/160	332.3	335.7
110	309.0	312.4	161/162	332.2	335.5
111/112	309.1	312.5	163/164	332.0	335.1
113/114	309.3	312.7	165/166	334.9	338.3
115	309.5	312.9	167/168	336.1	339.2
116/117	311.0	314.4	169	337.1	340.5
118/119	312.0	315.5	170/171	331.6	335.0
120	312.8	316.2	172/173	329.0	332.4
121	313.2	316.6	174	327.4	330.8
122/123	315.3	318.7	175/176	319.6	323.0
124/125	317.8	321.1	177/178	316.8	320.2
126	320.3	323.7	179	311.9	315.3
127/128	322.1	325.5	180/181	311.1	314.5
129/130	324.8	328.1	182/183	311.2	314.6
131/132	325.7	329.1			

TYPE OF BUILDING	Townhouses
NO OF LOTS	100
NO OF WHC's	100
NO OF SHC's	100
DRAINAGE AREA	Little Patuxent



WATER & SEWER CODE
COUNTY USE
WATER NO. E16
SEWER NO. 5290000

VICINITY MAP

GENERAL NOTES

- Approximate location of existing mains are shown. The contractor shall take all necessary precautions to protect existing mains and services and maintain uninterrupted supply. Any damage incurred shall be repaired immediately to the satisfaction of the Inspector, at the contractor's expense.
- All horizontal controls are based on Maryland State Coordinates.
- All vertical controls are based on U.S.G.S. Datum.
- All pipe elevations shown are invert elevations.
- Clear all utilities by a minimum of 6" clear all poles by 2'-0" minimum or tunnel as required. Any cost incurred to the contractor for tunneling or bracing at poles shall be included in unit prices bid for excavation and backfill.
- For details not shown on the drawings use Howard County Standard Details.
- For materials and construction methods use Howard County Standard Specifications, 4th Ed. design Manual, Volume II. The contractor shall have a copy of Volume II on the job.
- Contractor shall locate existing utilities a minimum of two (2) weeks in advance of construction operations in the vicinity of proposed utilities at his own expense.
- Contractor shall notify the following utilities or agencies at least five (5) working days before starting work shown on these plans.
State Highway Administration - 531-5533
Baltimore Gas & Electric Company - Contractor Services 561-2585.
Baltimore Gas & Electric Company - Underground Damage Control 234-5621
Baltimore Gas & Electric Company - Trouble Shooting - 298-9013
"Miss Utility" - 1-559-0100
Chesapeake & Potomac (C & P) Telephone Company - 725-9976
Colonial Pipeline Company - 795-1300
Bureau of Utilities Howard County - 992-2366
- Trees are to be protected from damage to maximum extent. Trees located within the construction strip are not to be removed or damaged by the contractor.
- Contractor shall remove trees, stumps, and roots along line of excavation as directed by the Inspector. Payment for such removal shall be included in the unit price bid for excavation and backfill.
- Place regulation "Men Working" and warning signs as required to comply with Maryland State Highway Administration Manual of Traffic Control for Highway Construction and Maintenance Operations.
- All water mains to be D.I.P. unless otherwise noted.
- Top of all water mains to have a minimum of 3'-1/2' cover unless otherwise noted.
- Valves adjacent to tees shall be strapped to tees.
- Block all fittings with concrete.
- Bury line elevations on fire hydrants shall be set to the elevations shown on the drawings. All fire hydrants shall be strapped and buttressed with concrete in accordance with standard details. Soil around the fire hydrant to be compacted in accordance with Sections 1003/1008 of the Standard Specifications.
- All water house connections shall be for an inside meter setting.
- The contractor shall not operate any water main valves on the existing system.
- All sewer mains shall be C.S.P.X., V.C.P.X., P.V.C., or A.C.P. Class 2400 unless otherwise noted.
- The contractor shall provide a joint in all sewer mains within 2'-0" of exterior manhole wall.
- All manholes shall be 4'-0" inside diameter, unless otherwise noted.
- Water main and water house connection lines must have a minimum of one foot separation from the sanitary sewer and sewer house connections as they cross. Except at crossings, water and sewer lines shall have a minimum horizontal separation of 10'.
- For all Copper Water House Connections, utilize flared type fittings only.

CONTRACT NO. 24-1335-D
KINGS MEADE
SECTION TWO
HOWARD COUNTY, MARYLAND
DEPARTMENT OF PUBLIC WORKS

ITEM	QUANTITIES		MATERIAL / SUPPLIER
	EST'D	AS BUILT	
8" W	972 LF	972 LF	CL-52 D.I.P. GRIFFIN
6" W	596 LF	596 LF	" " " "
8" S	2,070 LF	2,070 LF	SDR-35 P.V.C. J.M. MANUFACTURING CORP.
6" SHC	1,737 LF	1,737 LF	" " " "
1" WHC	1,125 LF	1,125 LF	TYPE "K" COPPER TUBING HALSTED METALS
3/4" WHC	1,150 LF	1,150 LF	" " " "
FH	2 EA	2 EA	M & H VALVE CO.
4'-0" DIA. MH	15 EA	15 EA	PRECAST CONCRETE ATLANTIC PRECAST CONCRETE CORP.
6" V. (EXCL. FH)	1 EA	1 EA	M & H VALVE CO.
8" DC TYPE 'B'	1 EA	1 EA	SDR-35 P.V.C. PIPE - J.M. MAN. CORP. FITTING - HARRINGTON CORP.
1/2" DRAIN	1 EA	1 EA	" " " "

Sediment Control Measures will be implemented in accordance with Article No. 15 of the Specifications & with Road Construction Plan F-86-195, Drawing, Sediment & Erosion Control.

REVIEWED FOR HOWARD SOIL CONSERVATION DISTRICT AND MEETS TECHNICAL REQUIREMENT.
Signature: *[Signature]* DATE: 9-3-86

U.S. SOIL CONSERVATION SERVICE
This Development Plan is approved for Soil Erosion and Sediment Control by the Howard Soil Conservation District.

APPROVED:
Signature: *[Signature]* DATE: 9/3/86
Howard S.C.D.

AS-BUILT G. WALLACE 3/31/87

SECTION TWO
KINGS MEADE
LOTS 84 THRU 186

DEPARTMENT OF PUBLIC WORKS
HOWARD COUNTY, MARYLAND

[Signature] 9-9-86
DIRECTOR OF PUBLIC WORKS DATE

[Signature] 9-8-86
CHIEF, BUREAU OF UTILITIES DATE

[Signature] 9-8-86
CHIEF, LAND DEVELOPMENT DIV. DATE

CLARK - FINEPROCK & SACKETT
ENGINEERS - PLANNERS - SURVEYORS

11315 LOCKWOOD DRIVE SILVER SPRING, MARYLAND 20904
(301) 593-3400



DES:	
DRN:	
CHK:	
DATE:	
BY NO.	
REVISION	
DATE	

TITLE SHEET

600' SCALE MAP NO. _____ BLOCK NO. _____

KINGS MEADE
SECTION TWO
6TH ELECTION DISTRICT
CONTRACT NO. 24-1335-D

SCALE
1" = 600'
SHEET
1 OF 3

