
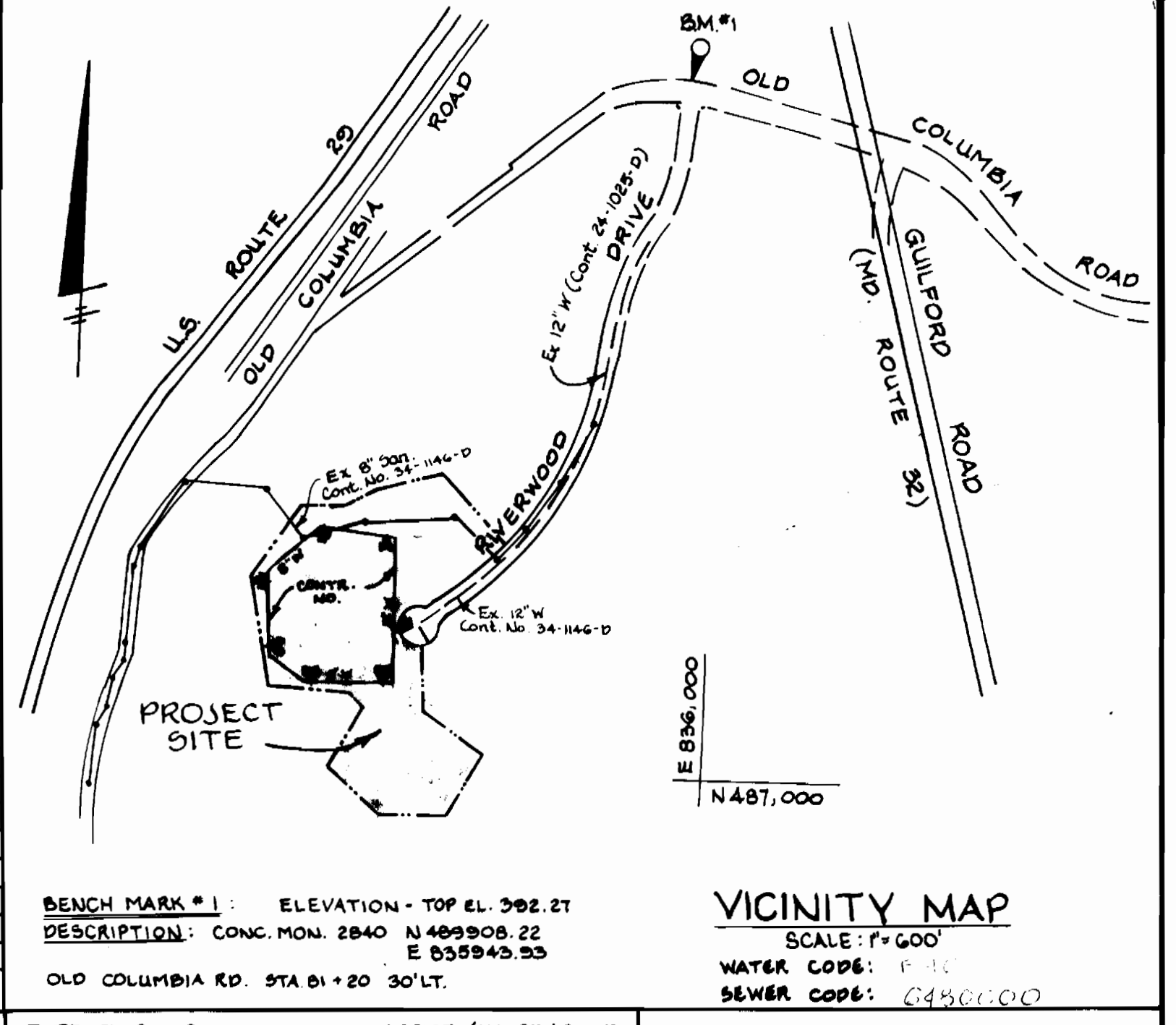
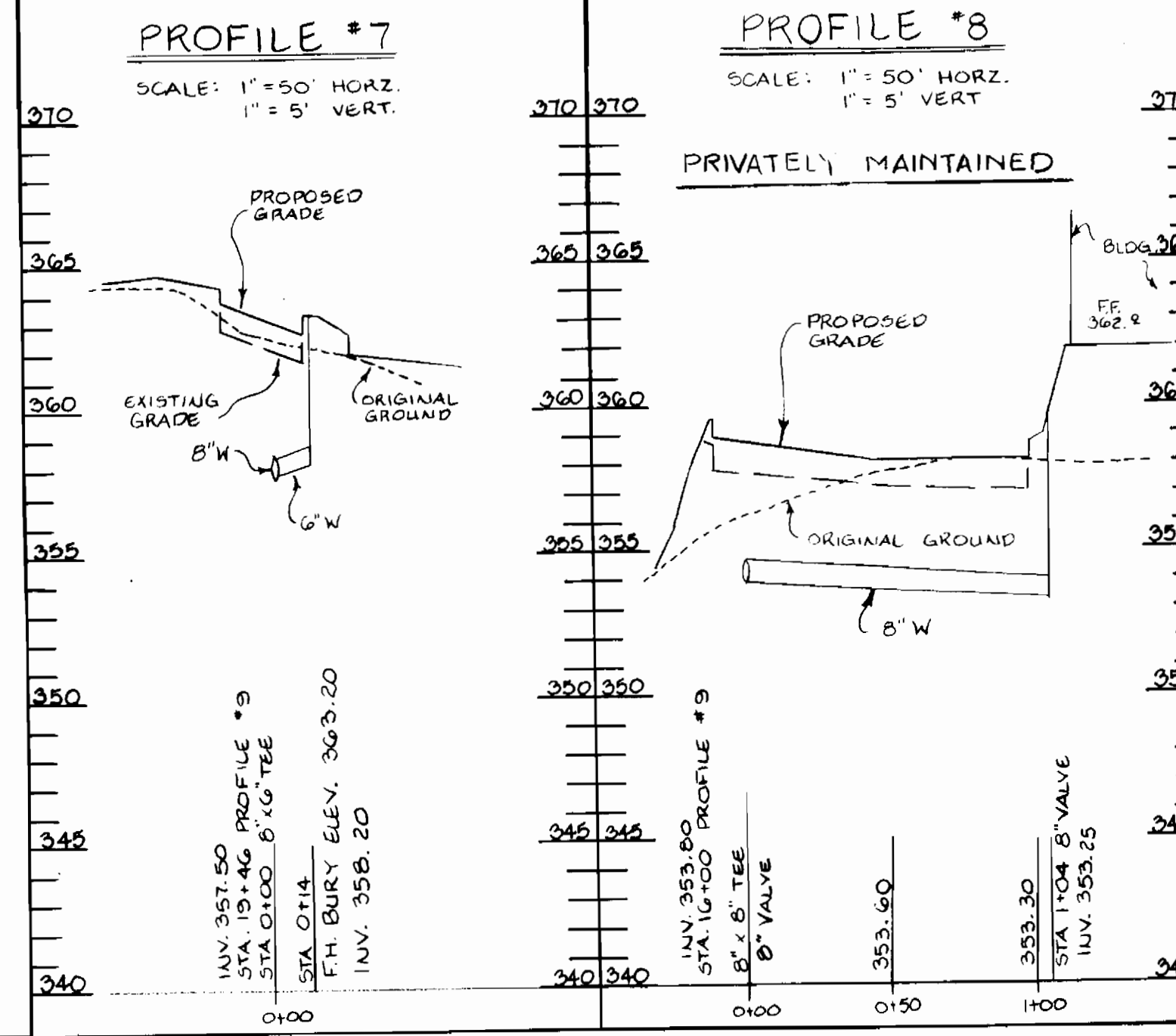


GENERAL NOTES:

1. Approximate location of existing mains are shown. The contractor shall take all necessary precautions to protect existing mains and services and maintain uninterrupted supply.
2. All horizontal controls are based on Maryland State Coordinates.
3. All vertical controls are based on U.S.G.S. data.
4. All pipe elevations shown are invert elevations.
5. Clear all utilities by a minimum of 6". Clear all poles by 2'-0" or tunnel as required. The owner has contacted the utilities companies and has made arrangements for bracing of poles as shown on the drawings. In the event the contractor's work requires the bracing of additional poles, any cost incurred by the owner for the bracing of additional poles or damages shall be deducted from money owed the contractor. The contractor shall coordinate with the utility companies to schedule the bracing of poles.
6. For details not shown on the drawings, and for materials and construction methods, use Howard County Design Manual, Volume IV, Standard Specifications and Details for Construction. The contractor shall have a copy of Volume IV on the job.
7. Where test pits have been made on existing utilities, they are noted by the symbol  at the location of the test pit. A note or notes containing the results of the test pit or pits is included on the drawings. Existing utilities in the vicinity of the proposed work for which test pits have not been dug shall be located by the Contractor two weeks in advance of construction operations at his own expense.
8. Contractor shall notify the following utilities or agencies at least five working days before starting work shown on these plans:

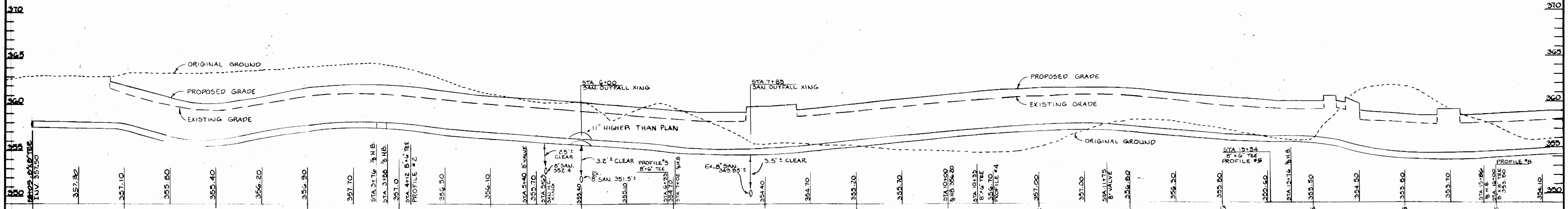
- State Highway Administration - 531-5553
 Baltimore Gas & Electric Co. - Contractor Services 561-2585
 Baltimore Gas & Electric Co. - Under Ground Damage Control 234-5621
 Baltimore Gas & Electric Co. - Trouble Shooting - 298-9013
 Miss Utility - 1-558-0100
 Colonial Pipeline Co. - 795-1390
 Bureau of Utilities, Howard County Dept. of Public Works - 992-2366
9. Trees and shrubs are to be protected from damage to maximum extent. Trees and shrubs located within the construction strip are not to be damaged or removed by the contractor.
 10. Contractor shall remove trees, stumps, and roots along line of excavation. Payment for such removal shall be included in the unit price bid for construction of the main.
 11. All water mains to be D.I.P. unless otherwise noted.
 12. Tops of all water mains to have a minimum of 3 1/2' cover unless otherwise noted.
 13. Valves adjacent to tees shall be strapped to tees.
 14. All fittings shall be buttressed or anchored with concrete in accordance with the Standard Details unless otherwise provided for on the drawings.
 15. Fire hydrants shall be set to the bury line elevations shown on the drawings. All fire hydrants shall be strapped and buttressed with concrete in accordance with Standard Details. Soil around the fire hydrants shall be compacted in accordance with Section 1003 of the Standard Specifications.
 16. The contractor shall not operate any water main valves on the existing water system.
 17. All water house connections shall be for inside meter settings, unless otherwise shown.
 18. ENTIRE SITE (ALL ELEVATIONS) LOWERED BY 1' FROM THIS PLAN.



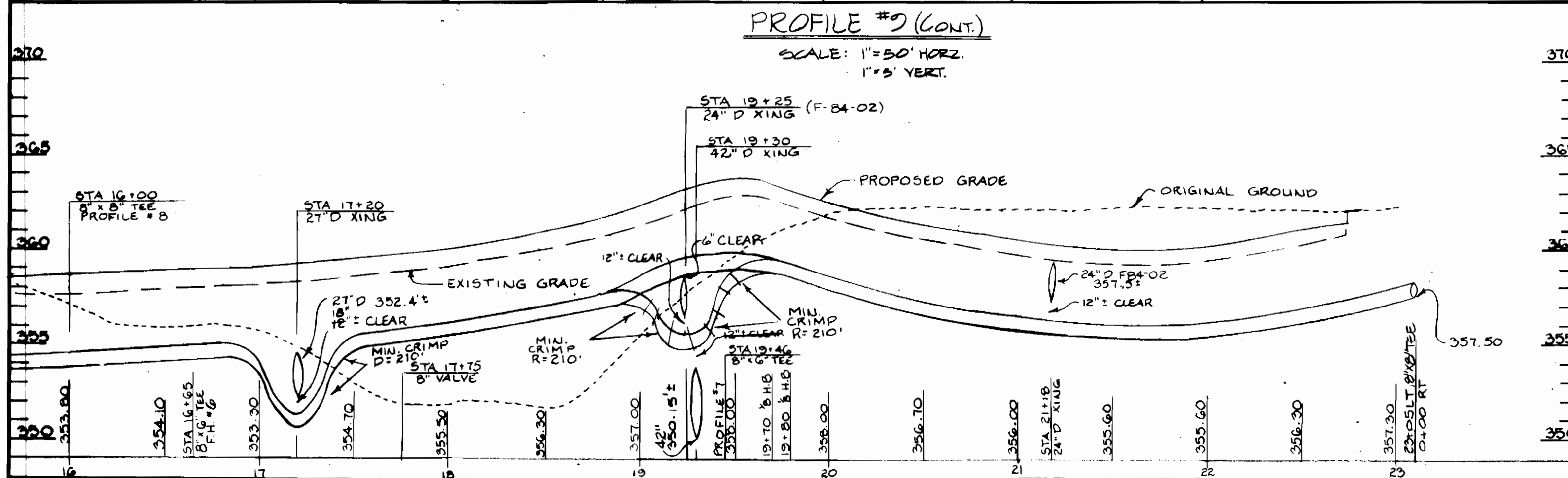
BENCH MARK #1: ELEVATION - TOP EL. 392.21
 DESCRIPTION: CONC. MON. 2840 N489908.22
 OLD COLUMBIA RD. STA 01+20 30' LT. E 855942.53

TYPE OF BUILDING	OFFICE/WAREHOUSE
NUMBER OF LOTS	1
NUMBER OF WATER H.C.	1
NUMBER OF SEWER H.C.	1
DRAINAGE AREA	LITTLE PATUXENT

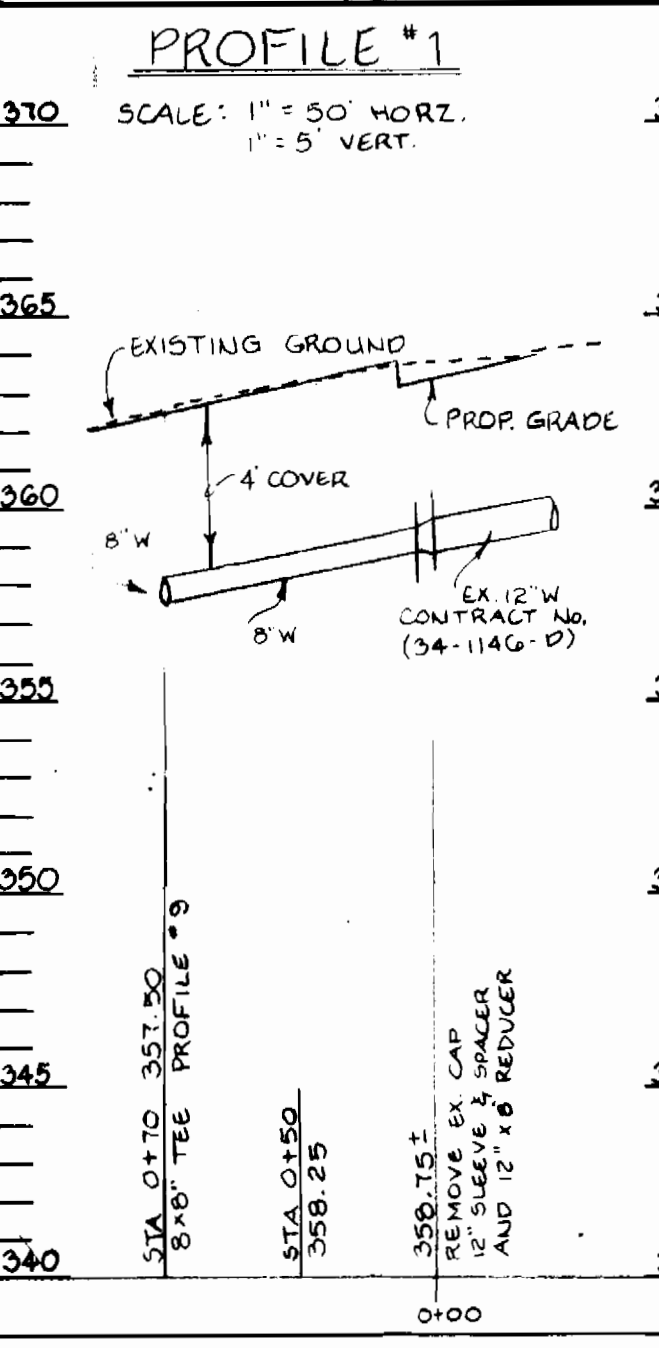
PROFILE #9
 SCALE: 1" = 50' HORIZ.
 1" = 5' VERT.



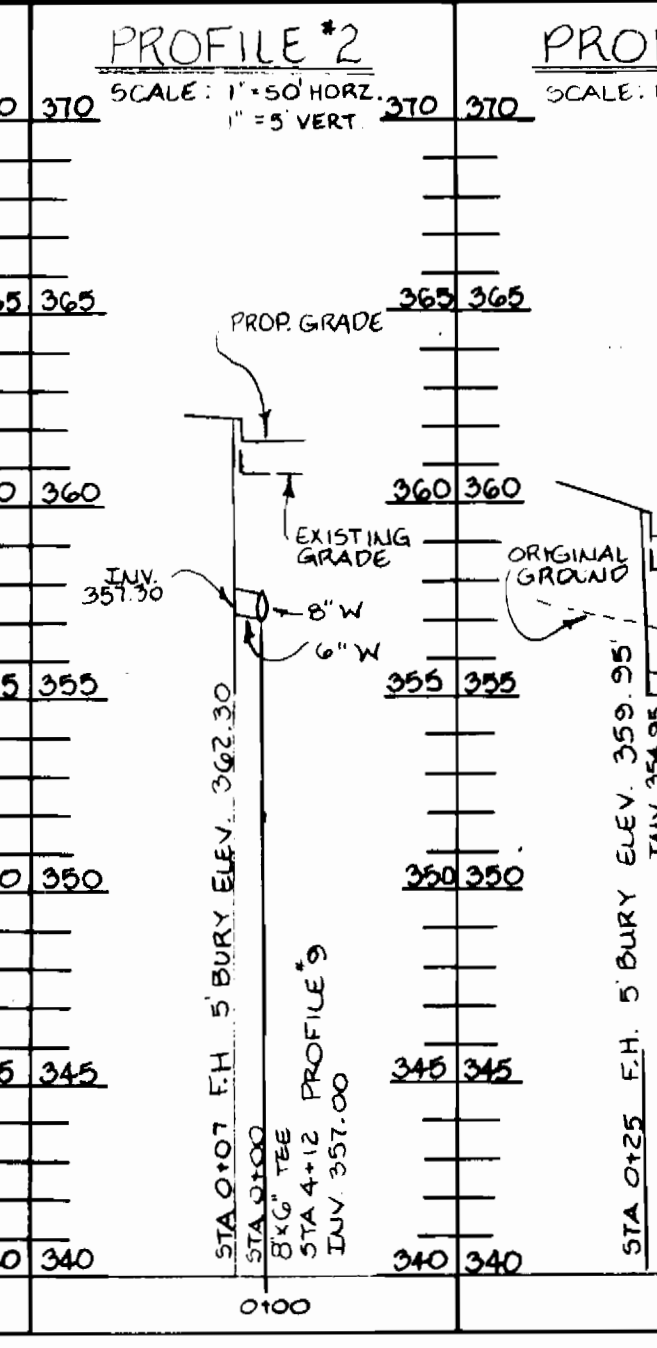
PROFILE #9 (CONT.)
 SCALE: 1" = 50' HORIZ.
 1" = 5' VERT.



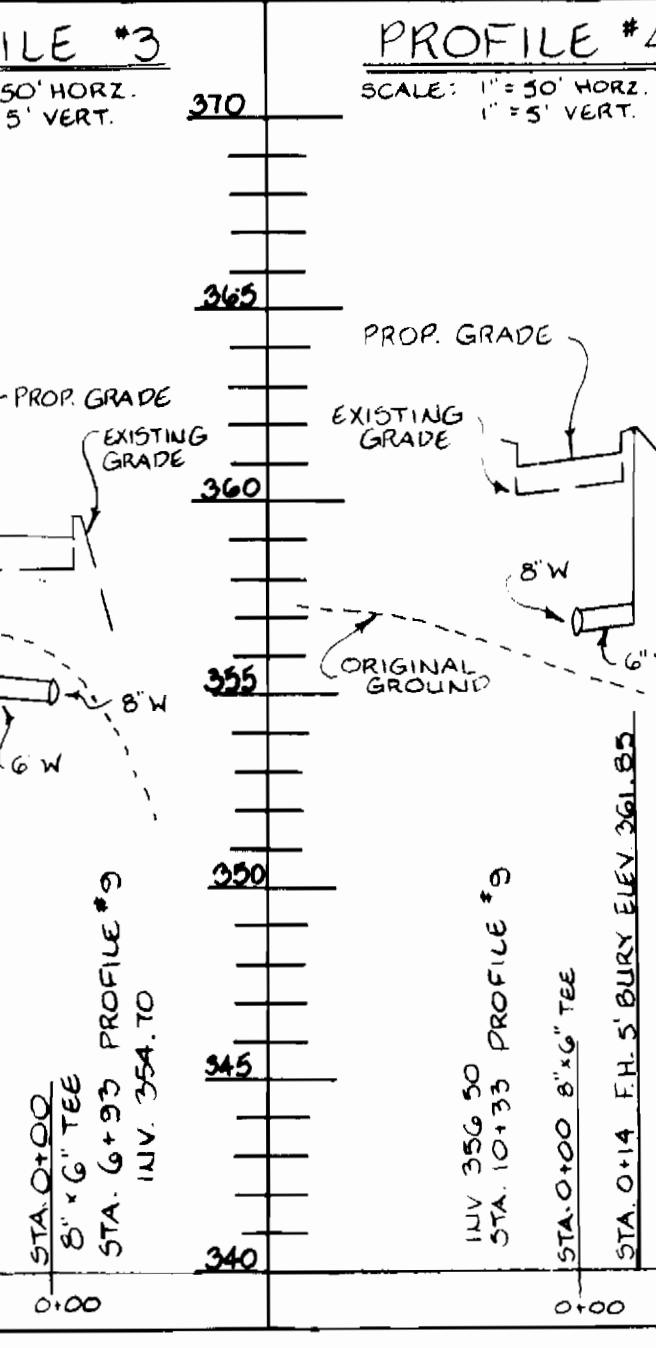
PROFILE #1
 SCALE: 1" = 50' HORIZ.
 1" = 5' VERT.



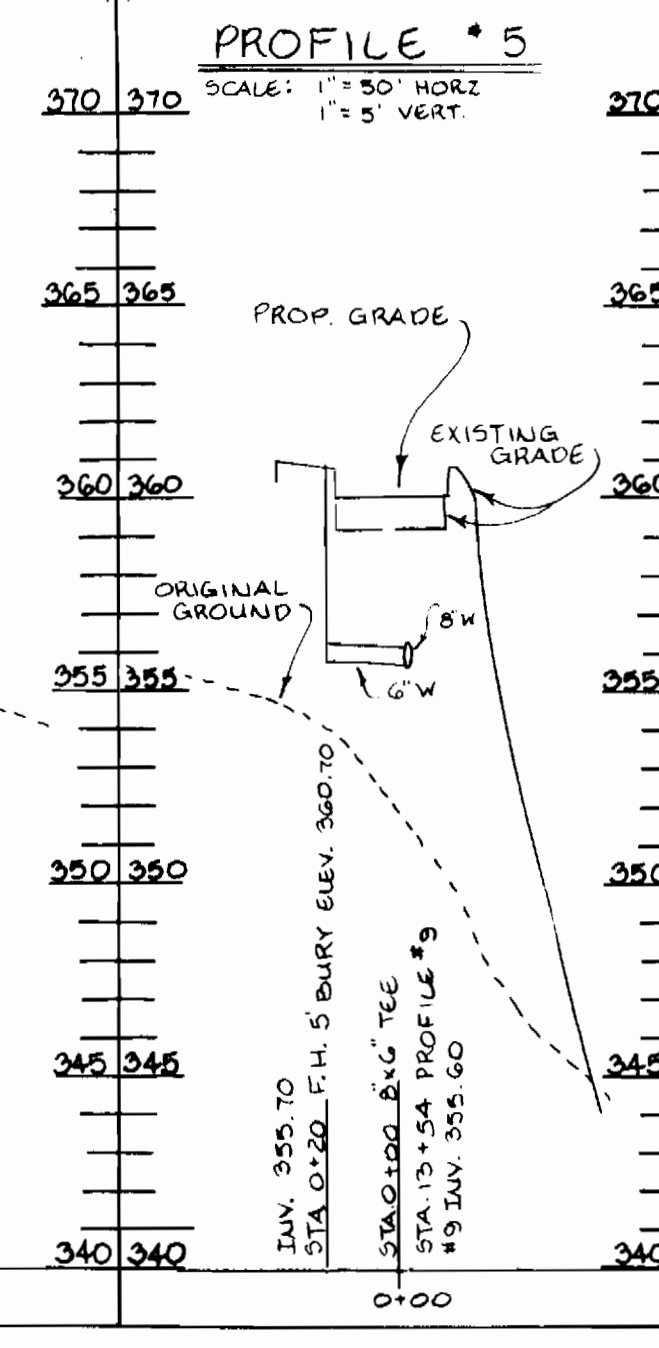
PROFILE #2
 SCALE: 1" = 50' HORIZ.
 1" = 5' VERT.



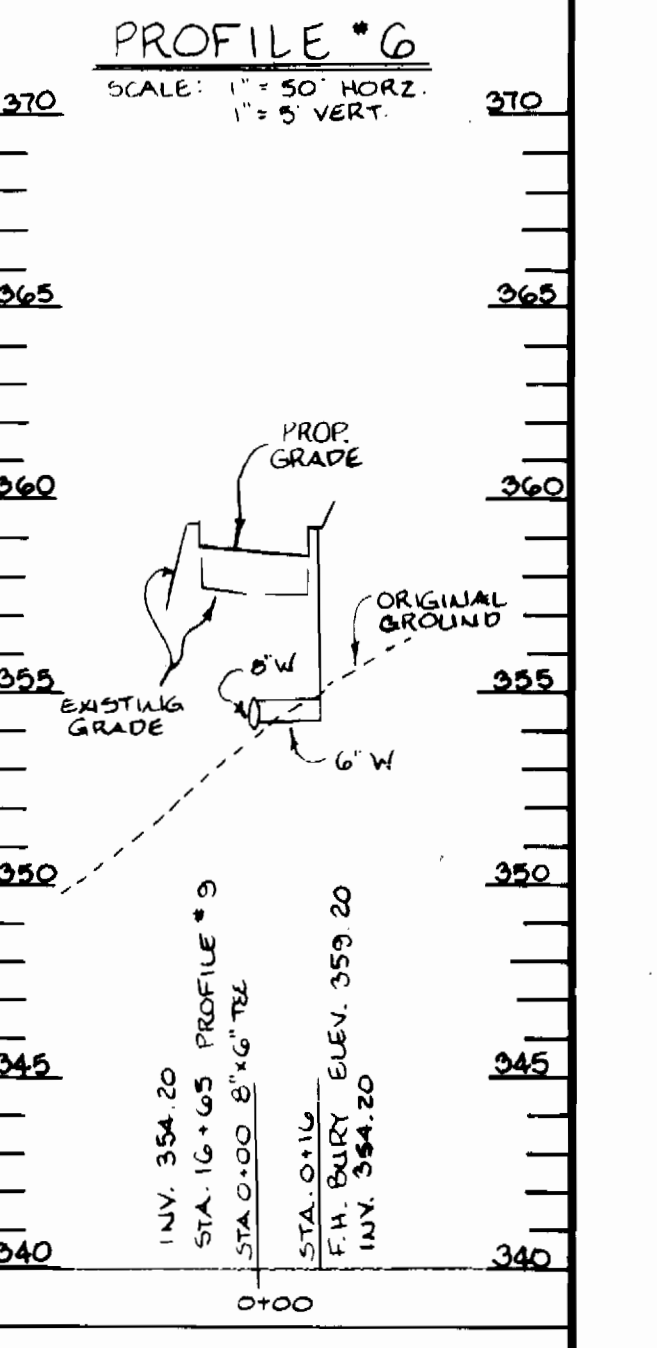
PROFILE #3
 SCALE: 1" = 50' HORIZ.
 1" = 5' VERT.



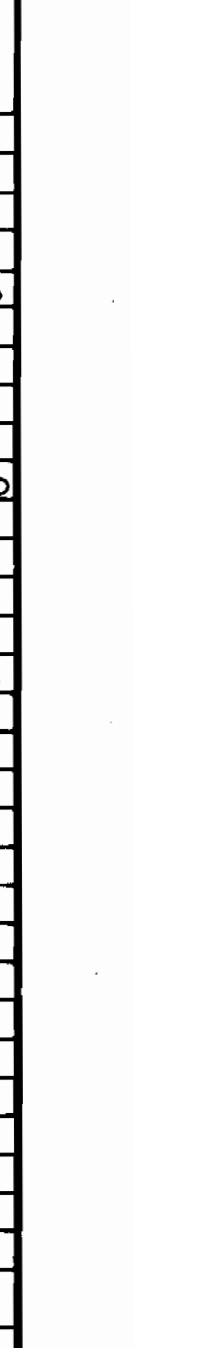
PROFILE #4
 SCALE: 1" = 50' HORIZ.
 1" = 5' VERT.



PROFILE #5
 SCALE: 1" = 50' HORIZ.
 1" = 5' VERT.



PROFILE #6
 SCALE: 1" = 50' HORIZ.
 1" = 5' VERT.



REVIEWED FOR HOWARD SOIL CONSERVATION DISTRICT AND MEETS TECHNICAL REQUIREMENTS.
 SIGNATURE: *Steph D. Fisher* DATE: 12/15/85
 U.S. SOIL CONSERVATION SERVICE

This Development Plan is approved for Soil Erosion and Sediment Control by the Howard Soil Conservation District.
 APPROVED: *Steph D. Fisher* DATE: 12/15/85
 Howard Soil Conservation District

Sediment Control Measures For This Contract Will Be Implemented In Accordance With Article 15 Of The Standard Specifications And SDP85-89C

DEPARTMENT OF PUBLIC WORKS
 HOWARD COUNTY, MARYLAND
 DATE: 1-29-85
 CHIEF, BUREAU OF UTILITIES

GEORGE WILLIAM STEPHENS, JR.
 AND ASSOCIATES
 303 ALLEGHENY AVE.
 TOWSON, MARYLAND 21204
 825-8120

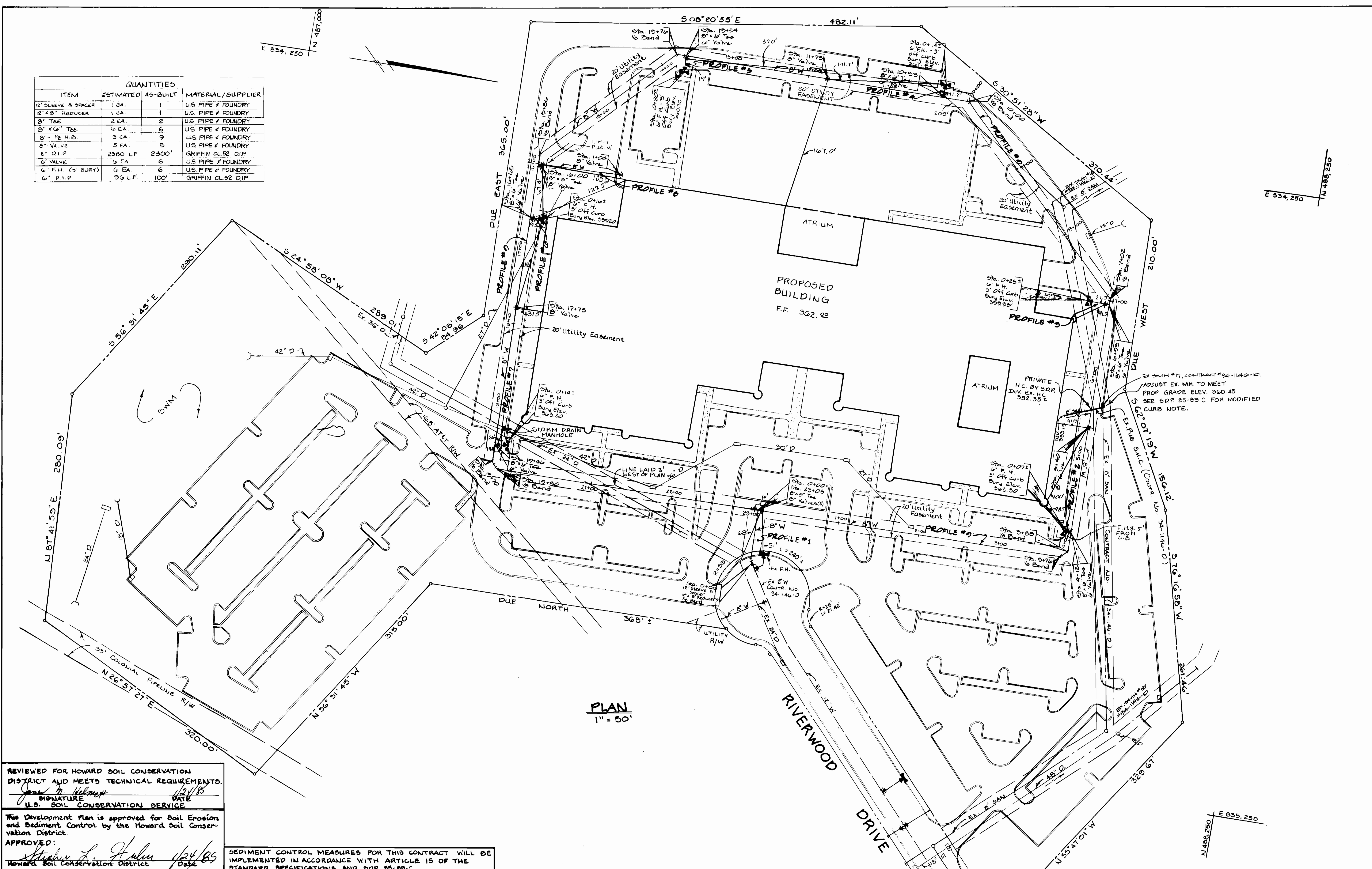
DEB: R.W.R.
 ORN: K.L.B.
 CHK: T.R.W.R.
 DATE: 11/12/84

PLAN & PROFILE FOR PROPOSED WATER MAIN
 CONTRACT NO. 44-1327-1D
 600' SCALE MAP NO. 42 BLOCK NO.

RIVERS CORPORATE PARK
 SECTION 1 AREA 2 PARCEL A
 ELECTION DISTRICT G
 HOWARD COUNTY, MARYLAND
 NOVEMBER 9, 1984

SCALE AS SHOWN
 SHEET 1 OF 2

QUANTITIES			
ITEM	ESTIMATED	AS-BUILT	MATERIAL/SUPPLIER
12" SLEEVE & SPACER	1 EA.	1	U.S. PIPE & FOUNDRY
12" x 8" REDUCER	1 EA.	1	U.S. PIPE & FOUNDRY
8" TEE	2 EA.	2	U.S. PIPE & FOUNDRY
8" x 6" TEE	6 EA.	6	U.S. PIPE & FOUNDRY
8" x 1/2 H.B.	3 EA.	9	U.S. PIPE & FOUNDRY
8" VALVE	5 EA.	5	U.S. PIPE & FOUNDRY
8" D.I.P.	2380 L.F.	2300'	GRIFFIN CL 52 D.I.P.
6" VALVE	6 EA.	6	U.S. PIPE & FOUNDRY
6" F.H. (5' BURY)	6 EA.	6	U.S. PIPE & FOUNDRY
6" D.I.P.	36 L.F.	100'	GRIFFIN CL 52 D.I.P.



PLAN
1" = 50'

REVIEWED FOR HOWARD SOIL CONSERVATION DISTRICT AND MEETS TECHNICAL REQUIREMENTS.
James M. Helmer 1/24/85
 SIGNATURE DATE
 U.S. SOIL CONSERVATION SERVICE

This Development Plan is approved for Soil Erosion and Sediment Control by the Howard Soil Conservation District.
 APPROVED:
Stephen L. Helmer 1/24/85
 Howard Soil Conservation District

SEDIMENT CONTROL MEASURES FOR THIS CONTRACT WILL BE IMPLEMENTED IN ACCORDANCE WITH ARTICLE 15 OF THE STANDARD SPECIFICATIONS AND 22P 25-22-C.

DEPARTMENT OF PUBLIC WORKS
 HOWARD COUNTY, MARYLAND
Robert M. Bauman 1-24-85
 CHIEF, BUREAU OF UTILITIES
William B. Pugh 1-24-85
 CHIEF, BUREAU OF ENGINEERING
Mark A. Pugh 1-24-85
 CHIEF, LAND DEVELOPMENT DIVISION

GEORGE WILLIAM STEPHENS, JR.
 AND ASSOCIATES
 303 ALLEGHENY AVE.
 TOWSON, MARYLAND 21204
 825-8120

DES: R.W.R.			
DRN: P.R.R./W.B.			
CHK: R.W.R.			
DATE: 1/19/84	BY NO.	REVISION	DATE

PLAN & PROFILE
 FOR
 PROPOSED WATER MAIN
 CONTRACT NO. 44-1327-D

RIVERS CORPORATE PARK
 SECTION 1 AREA 2 PARCEL 'A'
 ELECTION DISTRICT 6
 HOWARD COUNTY, MARYLAND
 NOVEMBER 9, 1984

SCALE AS SHOWN
 SHEET 2 OF 2