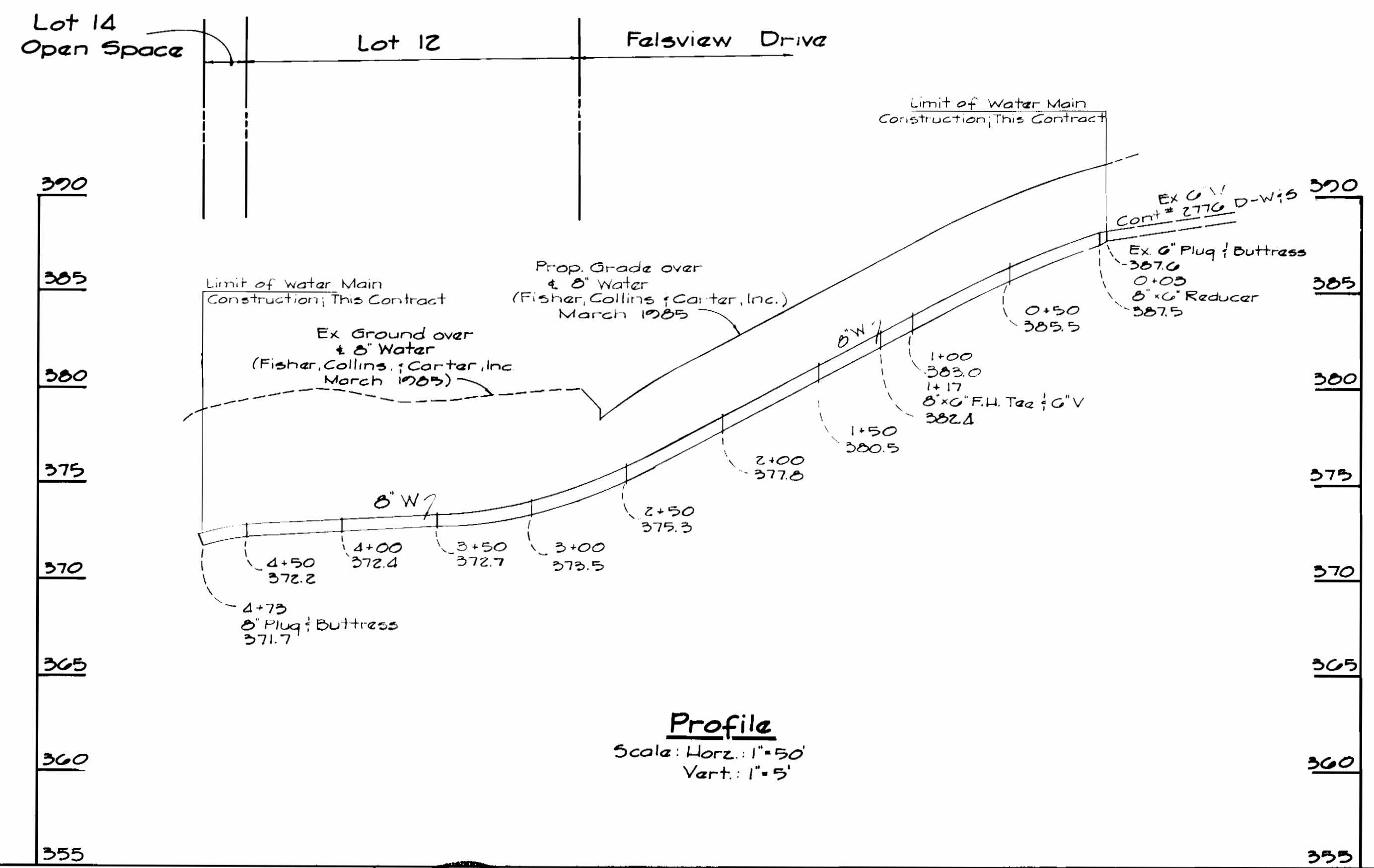
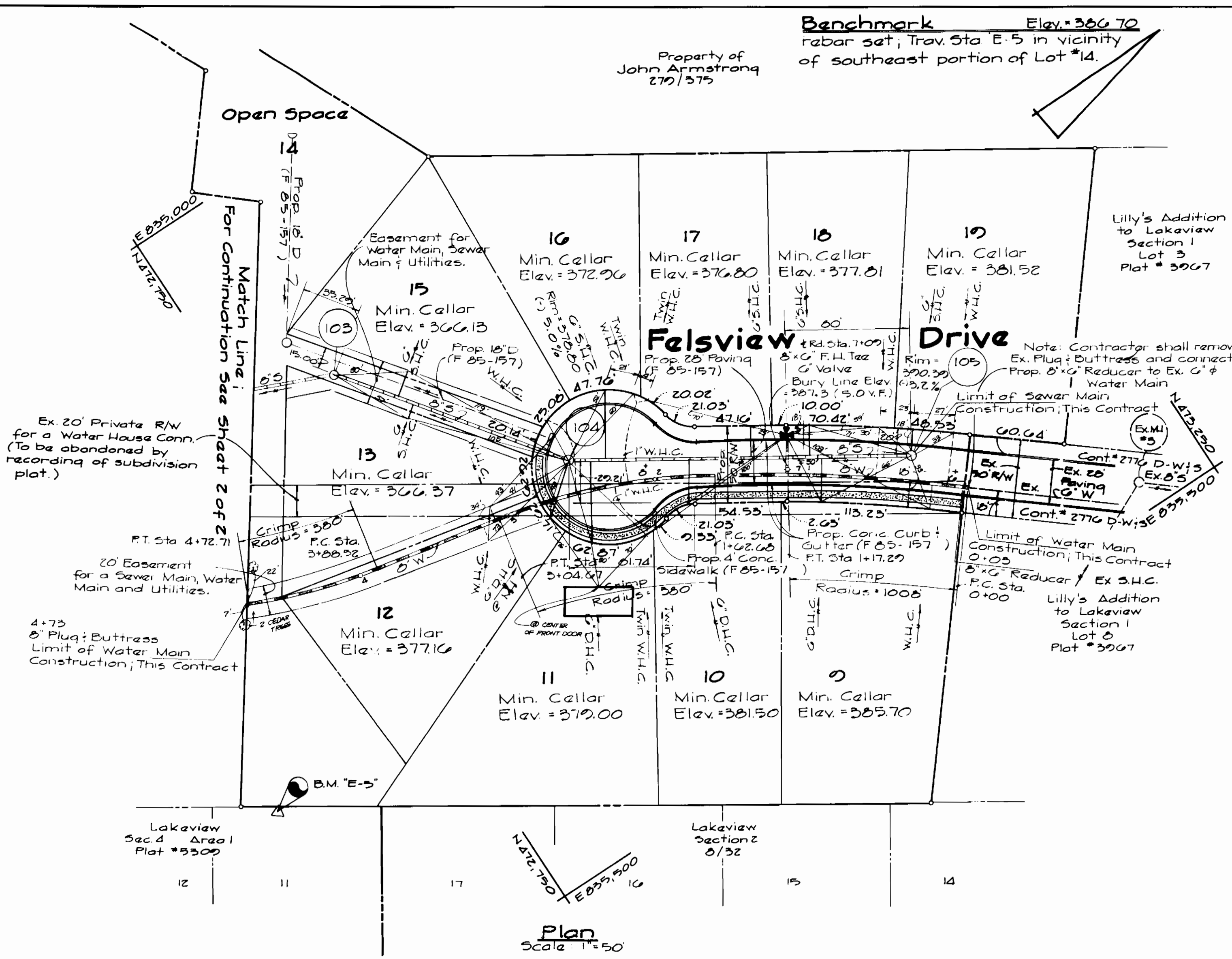


Sewer House Conn. Elevation @ R/L		
Station	Lot #	Elevation
M4 104 to M4 105		
0+00 (RT)	10	376.15
1+00 (LT)	9	360.10
1+50 (LT)	18	373.20
1+17 (LT)	17	371.00
0+70 (RT)	10	376.50
0+24 (LT)	10	367.00
0+14 (RT)	11	373.50
0+14 (RT)	12	371.70
M4 103 to M4 104		
0+50 (RT)	15	361.37 *
0+20 (LT)	15	361.25 *
M4 102 to M4 103		
2+05 (LT)	30	349.52 *
1+52 (RT)	31	348.97 *
0+10 (LT)	29	347.97
0+14 (RT)	33	353.88
M4 101 to M4 102		
3+17 (RT)	24	350.64
2+00 (LT)	25	347.21
2+42 (RT)	25	355.04
2+15 (LT)	27	345.37
1+40 (RT)	30	353.14
1+55 (LT)	26	343.85
0+45 (RT)	27	342.40
0+27 (LT)	25	341.82
Ex. M4 700C to M4 101		
2+20 (RT)	26	336.91
1+70 (LT)	23	332.10
1+11 (RT)	29	329.80
0+70 (LT)	22	322.03

* Elevation of S.H.C. @ R/W Line

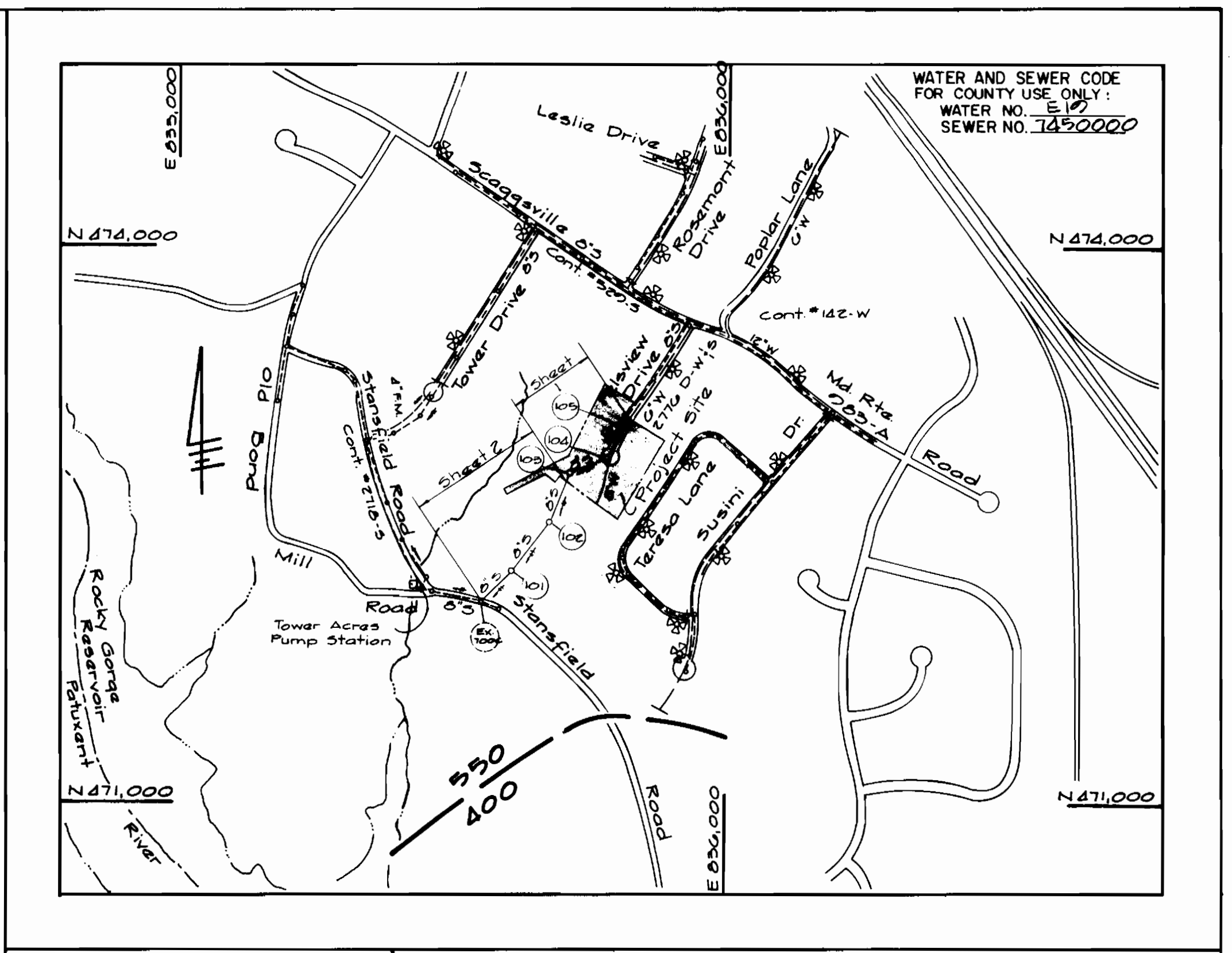


Stabilization Notes
 Following initial soil disturbance or redistribution, permanent or temporary stabilization shall be completed within (1) 7 calendar days for all perimeter sediment control structures, dikes, swales, ditches, perimeter slopes, and all slopes greater than 3:1 (2) 14 days as to all other disturbed or graded areas on the project site.

SEDIMENT CONTROL MEASURES FOR THIS CONTRACT WILL BE IMPLEMENTED IN ACCORDANCE WITH ARTICLE 15 OF THE HOWARD COUNTY DESIGN MANUAL AND STANDARDS AND SPECIFICATIONS FOR SOIL EROSION AND SEDIMENT CONTROL IN DEVELOPING AREAS AND ALSO AS SHOWN ON THE GRADING AND SEDIMENT CONTROL PLAN # 85-157.

REVIEW FOR HOWARD COUNTY SOIL CONSERVATION DISTRICT AND MEETS TECHNICAL REQUIREMENTS
 U.S. SOIL CONSERVATION SERVICE 7-19-85 DATE

THIS DEVELOPMENT PLAN IS APPROVED FOR EROSION AND SEDIMENT CONTROL BY HOWARD COUNTY SOIL CONSERVATION DISTRICT
 APPROVED: [Signature] 7/19/85 DATE
 HOWARD COUNTY SOIL CONSERVATION DISTRICT



TYPE OF BUILDINGS	RESIDENTIAL
NUMBER OF LOTS (100 BUILDABLE)	10
NO. OF WATER HOUSE CONNECTIONS	10
NO. OF SEWER HOUSE CONNECTIONS	20
DRAINAGE AREA	PATUXENT

- GENERAL NOTES**
- APPROXIMATE LOCATION OF EXISTING MAINS ARE SHOWN THE CONTRACTOR SHALL TAKE ALL NECESSARY PRECAUTIONS TO PROTECT EXISTING MAINS AND SERVICES AND MAINTAIN UNINTERRUPTED SUPPLY. ANY DAMAGE INCURRED SHALL BE REPAIRED IMMEDIATELY TO THE SATISFACTION OF THE ENGINEER AT THE CONTRACTOR'S EXPENSE.
 - ALL HORIZONTAL CONTROLS ARE BASED ON MARYLAND STATE COORDINATES.
 - ALL VERTICAL CONTROLS ARE BASED ON U.S.G.S. DATA.
 - ALL PIPE ELEVATIONS SHOWN ARE INVERT ELEVATIONS.
 - CLEAR ALL UTILITIES BY A MINIMUM OF 6' CLEAR ALL POLES BY 2'-0" MINIMUM OR TUNNEL AS REQUIRED. THE OWNER HAS CONTACTED THE UTILITIES COMPANIES AND HAS MADE ARRANGEMENTS FOR BRACING OF POLES AS SHOWN ON THE DRAWINGS. IN THE EVENT THE CONTRACTOR'S WORK REQUIRES THE BRACING OF ADDITIONAL POLES, ANY COST INCURRED BY THE OWNER FOR THE BRACING OF ADDITIONAL POLES OR DAMAGES SHALL BE DEDUCTED FROM MONEY OWED THE CONTRACTOR. THE CONTRACTOR SHALL COORDINATE WITH THE UTILITY COMPANIES TO SCHEDULE THE BRACING OF THE POLES.
 - CONTRACTOR SHALL NOTIFY THE FOLLOWING UTILITIES OR AGENCIES AT LEAST FIVE (5) WORKING DAYS BEFORE STARTING WORK SHOWN ON THESE PLANS.
 - BALTIMORE GAS & ELECTRIC COMPANY - CONTRACTOR SERVICES 561-2585
 - BALTIMORE GAS & ELECTRIC COMPANY - UNDER GROUND DAMAGE CONTROL 234-5621
 - BALTIMORE GAS & ELECTRIC COMPANY - TROUBLE SHOOTING 298-9013
 - "MISS UTILITY" 1-559-0100
 - CHESAPEAKE & POTOMAC TELEPHONE COMPANY 725-9976
 - BUREAU OF UTILITIES - HOWARD COUNTY 992-2366
 - TREES ARE TO BE PROTECTED FROM DAMAGE TO MAXIMUM EXTENT. TREES LOCATED WITHIN THE CONSTRUCTION STRIP ARE NOT TO BE REMOVED OR DAMAGED BY THE CONTRACTOR.
 - CONTRACTOR SHALL REMOVE TREES, STUMPS AND ROOTS ALONG LINE OF EXCAVATION AS DIRECTED BY THE ENGINEER. PAYMENT FOR SUCH REMOVAL SHALL BE INCLUDED IN THE UNIT PRICE BID FOR CONSTRUCTION OF THE MAIN.
 - PLACE REGULATION "MEN WORKING" AND WARNING SIGNS AS REQUIRED TO COMPLY WITH MARYLAND STATE HIGHWAY ADMINISTRATION MANUAL OF TRAFFIC CONTROL FOR HIGHWAY CONSTRUCTION AND MAINTENANCE OPERATIONS.
 - ALL SEWER MAINS SHALL BE C.S.P.X., R.C.S.P., PVC, V.C.P.X. OR A.C.P. CLASS 2400 UNLESS OTHERWISE NOTED.
 - CONTRACTOR SHALL PROVIDE A JOINT IN ALL SEWER MAINS WITHIN 2'-0" OF EXTERIOR MANHOLE WALLS.
 - ALL MANHOLES SHALL BE 4'-0" INSIDE DIAMETER UNLESS NOTED.
 - MANHOLES SHOWN WITH 12" AND 18" WALLS ARE BRICK MANHOLES ONLY.
 - ALL WATER MAINS TO BE D.I.P. UNLESS OTHERWISE NOTED.
 - TOP OF WATER MAINS TO HAVE A MINIMUM OF 3'-6" COVER UNLESS OTHERWISE NOTED.
 - BURYLENE ELEVATIONS ON FIRE HYDRANTS SHALL BE SET TO THE ELEVATIONS SHOWN ON THE DRAWINGS. ALL FIRE HYDRANTS SHALL BE STRAPPED AND BUTTRESSED CONCRETE IN ACCORDANCE WITH STANDARD DETAILS. SOIL AROUND THE FIRE HYDRANT TO BE COMPACTED IN ACCORDANCE WITH SECTION 1003 AND 1008 OF THE STANDARD SPECIFICATIONS.
 - ALL WATER HOUSE CONNECTIONS SHALL BE FOR AN INSIDE METER SETTING.
 - THE CONTRACTOR SHALL NOT OPERATE ANY WATER MAIN VALES ON THE EXISTING SYSTEM.
 - WATER MAINS AND WATER HOUSE CONNECTION LINES MUST BE PLACED SO AS TO HAVE AT LEAST ONE (1) FOOT SEPARATION FROM THE SEWER MAIN OR SEWER HOUSE CONNECTION AS THEY PASS ABOUT IT.
 - MANHOLES LOCATED WITHIN PROPOSED ROADWAY SHALL HAVE STANDARD HEAVY TRAFFIC MANHOLE FRAME AND COVER, STD. DETAIL G5.1.
 - VALVES ADJACENT TO TEES SHALL BE STRAPPED TO TEES.
 - MANHOLES DESIGNATED W.T. IN PLAN AND PROFILE SHALL HAVE WATERTIGHT FRAME AND COVERS, STANDARD DETAIL G5.2. WHERE WATERTIGHT MANHOLE FRAME AND COVER IS USED, SET TOP OF FRAME 1'-6" ABOVE FINISHED GRADE UNLESS OTHERWISE NOTED ON THE DRAWINGS.
 - FOR ALL COPPER WATER HOUSE CONNECTIONS, UTILIZE FLARED TYPE FITTINGS ONLY.
 - FOR DETAILS NOT SHOWN ON THE DRAWINGS, AND FOR MATERIALS AND CONSTRUCTION METHODS, USE HOWARD COUNTY DESIGN MANUAL, VOLUME IV, STANDARD SPECIFICATIONS AND DETAILS FOR CONSTRUCTION. THE CONTRACTOR SHALL HAVE A COPY OF VOLUME IV ON THE JOB.
 - WHERE TEST PITS HAVE BEEN MADE ON EXISTING UTILITIES, THEY ARE NOTED BY THE SYMBOL [Symbol] AT THE LOCATION OF THE TEST PIT. A NOTE OR NOTES CONTAINING THE RESULTS OF THE TEST PIT OR PITS IS INCLUDED ON THE DRAWINGS. EXISTING UTILITIES IN THE VICINITY OF THE PROPOSED WORK FOR WHICH TEST PITS HAVE NOT BEEN DUG SHALL BE LOCATED BY THE CONTRACTOR TWO WEEKS IN ADVANCE OF CONSTRUCTION OPERATIONS AT HIS OWN EXPENSE.
 - ALL FITTINGS SHALL BE BUTTRESSED OR ANCHORED WITH CONCRETE IN ACCORDANCE WITH THE STANDARD DETAILS UNLESS OTHERWISE PROVIDED FOR ON THE DRAWINGS.

Item	Quantities		Supplier
	Estimated	As-Built	
8" Water	475 L.F.	473	GRIFIN
6" Water	25 L.F.	22	GRIFIN
3/4" W.H.C.	150 L.F.	161	HOWELL METALS CO.
1" W.H.C.	100 L.F.	95	HOWELL METALS CO.
Fire Hydrant	1 Ea.	1	U.S. PIPE & FOUNDRY
6" F.H. Valve	1 Ea.	1	U.S. PIPE & FOUNDRY
8" Sewer	1282 L.F.	1279	J.M. MFG. CO.
6" Sewer	280 L.F.	282	J.M. MFG. CO.
Manholes	5 Ea.	5	ALUMINUM BRIDGE CONCRETE CO.

CONTRACT NO. 24-1326-D
 LILLY'S ADDITION TO LAKEVIEW
 SECTION 2
 WATER AND SEWER EXTENSION
 HOWARD COUNTY, MARYLAND

DEPARTMENT OF PUBLIC WORKS
 HOWARD COUNTY, MARYLAND
 [Signatures and Dates]

FISHER, COLLINS AND CARTER, INC.
 CONSULTING ENGINEERS AND LAND SURVEYORS
 8388 COURT AVENUE
 ELLICOTT CITY, MARYLAND 21043
 [Seal and Signature]

DES.	DRN.	CHK.	DATE	BY	NO.	REVISION	DATE
D.E.V.	D.E.V.	T.A.R.	3/19/85				

PLAN & PROFILE
 WATER AND SEWER MAINS
 600' SCALE MAP NO. 40-47 BLOCK NO.

LILLY'S ADDITION TO LAKEVIEW
 SECTION 2
 CONTRACT NO. 24-1326-D
 SIXTH ELECTION DISTRICT
 HOWARD COUNTY, MARYLAND
 SCALE AS SHOWN
 SHEET 1 OF 2

