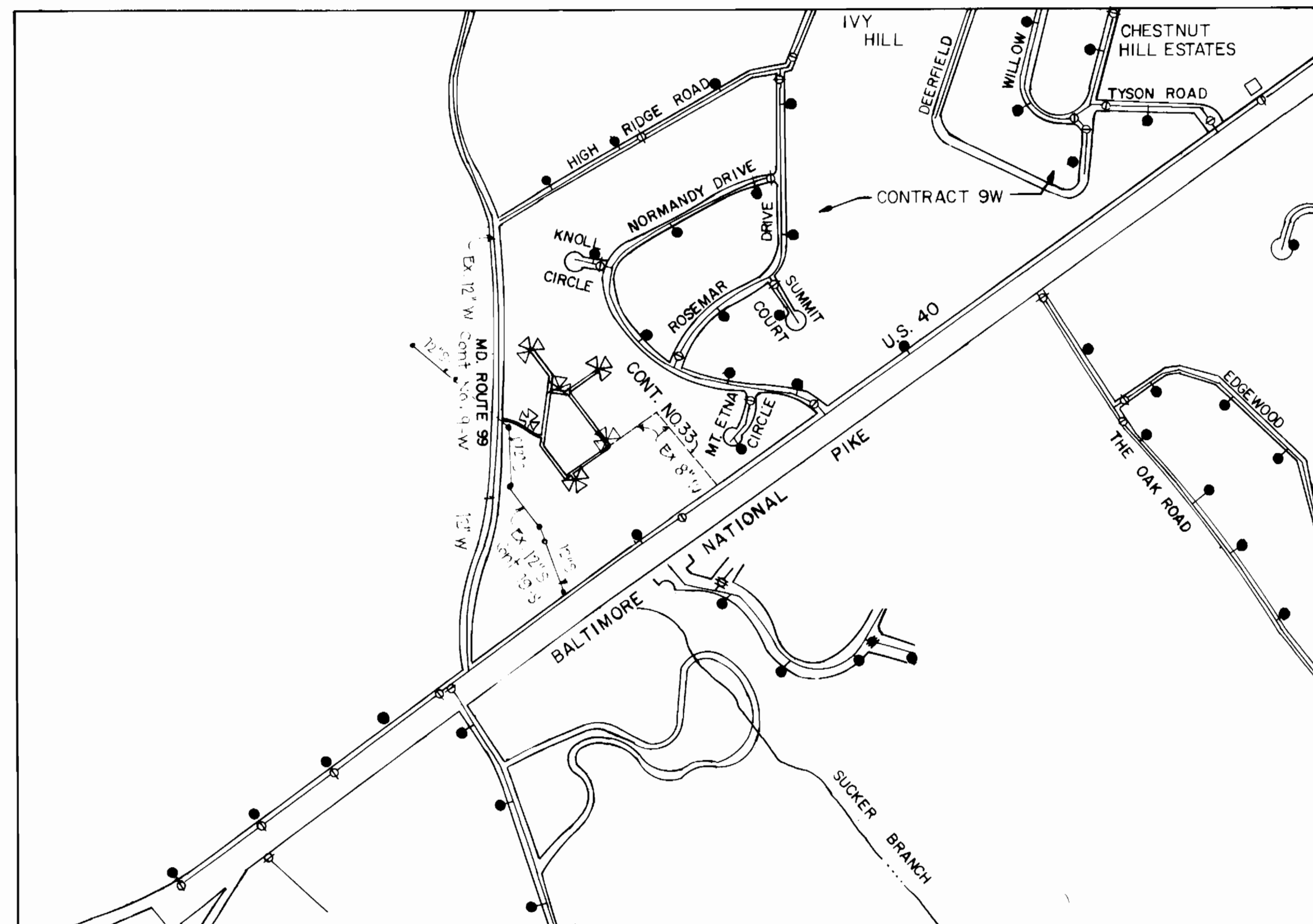


QUANTITIES			
Item	Estimated	As Built	Material / Supplies
12"x8" T&Y	1	1	DIP / A/P WATER SUPPLY
8"V	7	6	" " " "
6"V EXCL.FH	2	2	" " " "
"FH	5	4	MUELLER " " "
8"W	1565'	1551'	DIP " " "
6"W	480'	205'	DIP " " "
2"W	—	233'	COPPER " " "



Water & Sewer Code Water Code _____ Sewer Code 14-2300	Scale: 1" = 600' VICINITY MAP	Number of Lots 1 Type of Building Commercial Number of W.H.C. 2 Number of S.H.C. 2 Drainage Area Patapsco
--	---	---

GENERAL NOTES

- Approximate location of existing mains are shown. The contractor shall take all necessary precautions to protect existing mains and services and maintain uninterrupted supply. Any damage incurred shall be repaired immediately to the satisfaction of the Engineer at the Contractor's expense.
- All horizontal controls are based on Maryland State Coordinates.
- All vertical controls are based on U.S.G.S. data.
- All pipe elevations shown are invert elevations.
- Clear all utilities by a minimum of 6". Clear all poles by 2'-0" minimum or tunnel as required. The owner has contacted the utilities companies and has made arrangements for bracing of poles as shown on the drawings. In the event the contractor's work requires the bracing of additional poles, any cost incurred by the owner for the bracing of additional poles or damages shall be deducted from money owed the contractor. The contractor shall coordinate with the utility companies to schedule the bracing of the poles.
- For details not shown on the drawings, and for materials and construction methods, use Howard County Design Manual, Volume IV, Standard Specifications and Details for Construction. The contractor shall have a copy of Volume IV on the job.
- Where tests pits have been made on existing utilities, they are noted by the symbol \square at the location of the test pit. A note or notes containing the results of the test pit or pits is included on the drawings. Existing utilities in the vicinity of the proposed work for which test pits have not been dug shall be located by the contractor two weeks in advance of construction operations at his own expense.
- Contractor shall notify the following utilities or agencies at least five working days before starting work shown on these plans:
 State Highway Administration - 531-5533
 Baltimore Gas & Electric Co. Contractor Services - 561-2585
 Baltimore Gas & Electric Co. Underground Damage Control - 234-5621
 Baltimore Gas & Electric Co. Trouble Shooting - 298-9013
 Miss Utility - 1-559-0100
 Colonial Pipeline Co. - 795-1390
 Bureau of Utilities, Howard County Department of Public Works - 992-2366
- Trees and shrubs are to be protected from damage to maximum extent. Trees and shrubs located within the construction strip are not to be removed or damaged by the contractor.
- Contractor shall remove trees, stumps and roots along line of excavation. Payment for such removal shall be included in the unit price bid for construction of the main.
- All water mains to be D.I.P. unless otherwise noted.
- Tops of all water mains to have a minimum of 3-1/2' cover unless otherwise noted.
- Valves adjacent to tees shall be strapped to tees.
- All fittings shall be buttressed or anchored with concrete in accordance with the Standard Details unless otherwise provided for on the drawings.
- Fire hydrants shall be set to the bury line elevations shown on the drawings. All fire hydrants shall be strapped and buttressed with concrete in accordance with Standard Details. Soil around the fire hydrant shall be compacted in accordance with Section 1003 of the Standard Specifications.
- The contractor shall not operate any water main valves on the existing water system.
- All sewer mains shall be CSPX, RSP, VCPX, ACP cl. 2400 or PVC unless otherwise noted.
- All water house connections shall be for inside water settings.

As BUILT
 Ray Crowe
 8-6-85

Sediment Control Measures will be implemented in accordance with Article No. 15 of the Specifications & with Site Development (SDR-84-297; Drawing Sediment & Erosion Control

REVIEWED FOR HOWARD SOIL CONSERVATION DISTRICT AND MEETS TECHNICAL REQUIREMENT.
James H. ...
 SIGNATURE DATE
 US SOIL CONSERVATION SERVICE

This Development Plan is approved for Soil Erosion and Sediment Control by the Howard Soil Conservation District.
 APPROVED:
Stephen D. ...
 Howard S.C.D. DATE

BRUNING AND IMEZ

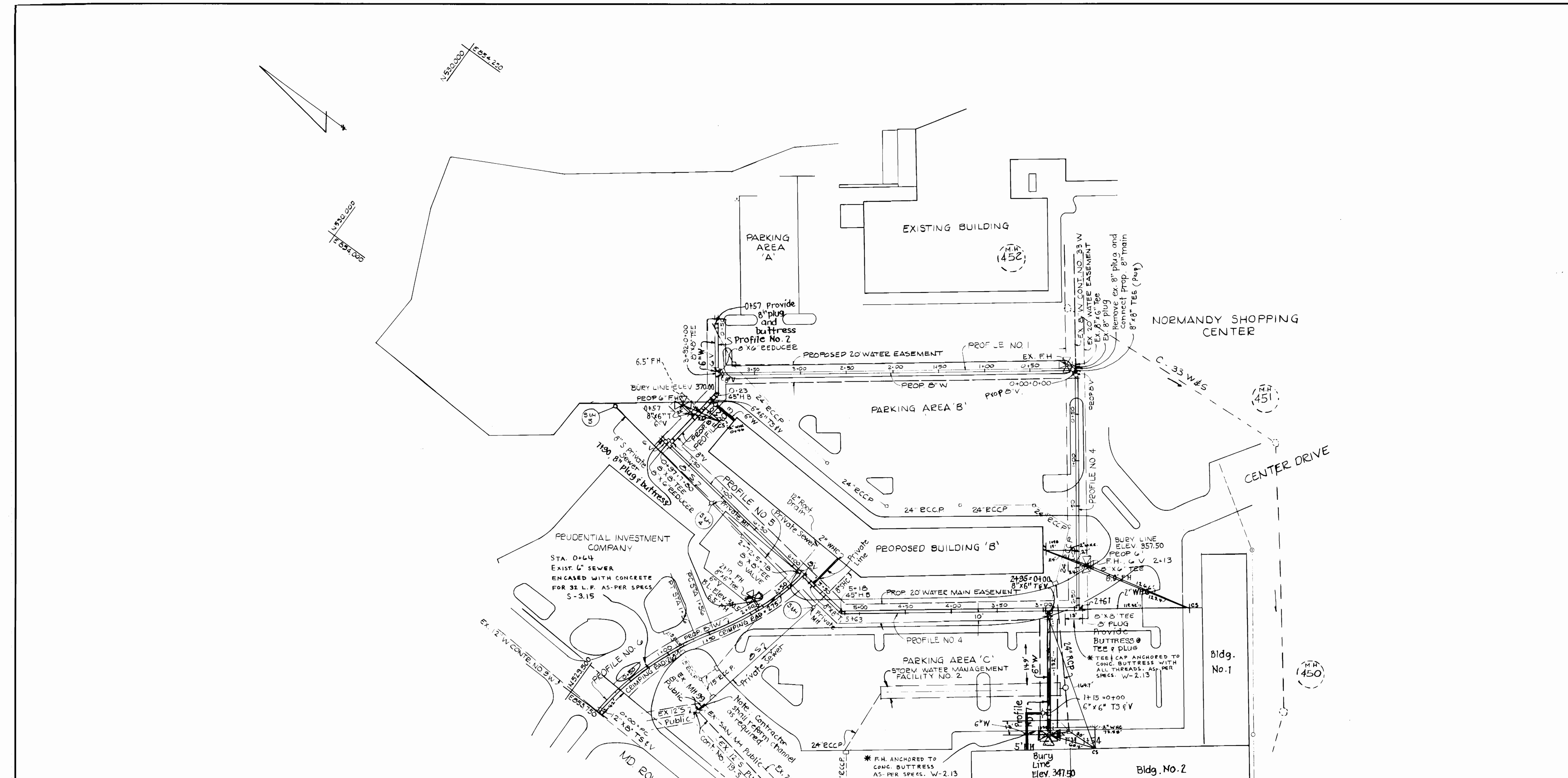
DEPARTMENT OF PUBLIC WORKS HOWARD COUNTY, MARYLAND		PURDUM & JESCHKE ENGINEERS 1029 N. CALVERT ST. BALTIMORE, MARYLAND	
<i>W. F. ...</i> DIRECTOR OF PUBLIC WORKS DATE 9-15-85	<i>William ...</i> CHIEF, BUREAU OF ENGINEERING DATE 9-15-85	<i>William ...</i> CHIEF, LAND DEVELOPMENT DIV. DATE 9-15-85	<i>William ...</i> DATE 9-15-85

DES:			
DRN:			
CHK:			
DATE	BY	NO.	REVISION

WATER MAIN EXTENSION LOCATION MAP		SCALE AS SHOWN
600' SCALE MAP NO. 1761A	BLOCK NO.	SHEET 1 OF 3

NORMANDY SHOPPING CENTER (PHASE II) SECOND ELECTION DISTRICT CONTRACT NO. 44-1323-D 14-1323-L		SCALE AS SHOWN
DATE		SHEET 1 OF 3

As BUILT Ray Crowe 8-6-85		SCALE AS SHOWN
DATE		SHEET 1 OF 3



Sediment Control Measures will be implemented in accordance with Article No. 15 of the Specifications & with Site Development Plan SDP-84-27, Drawing Sediment & Erosion Control

REVIEWED FOR HOWARD SOIL CONSERVATION DISTRICT AND MEETS TECHNICAL REQUIREMENT.
James M. Helmer 1/29/85
 SIGNATURE DATE
 US SOIL CONSERVATION SERVICE

This Development Plan is approved for Soil Erosion and Sediment Control by the Howard Soil Conservation District.

APPROVED:
Stephen L. Huber 1/29/85
 HOWARD S.C.D. DATE

LEGEND:
 Cs - Curve Strip

DEPARTMENT OF PUBLIC WORKS
 HOWARD COUNTY, MARYLAND
 DIRECTOR OF PUBLIC WORKS: *James F. Nalley* 2-15-85
 CHIEF, BUREAU OF UTILITIES: *Robert Bunker* 2-10-85
 CHIEF, BUREAU OF ENGINEERING: *William S. Kelly* 2-15-85
 CHIEF, LAND DEVELOPMENT DIV.: *William H. ...*

PURDUM & JESCHKE
 ENGINEERS
 1029 N. CALVERT ST.
 BALTIMORE, MARYLAND



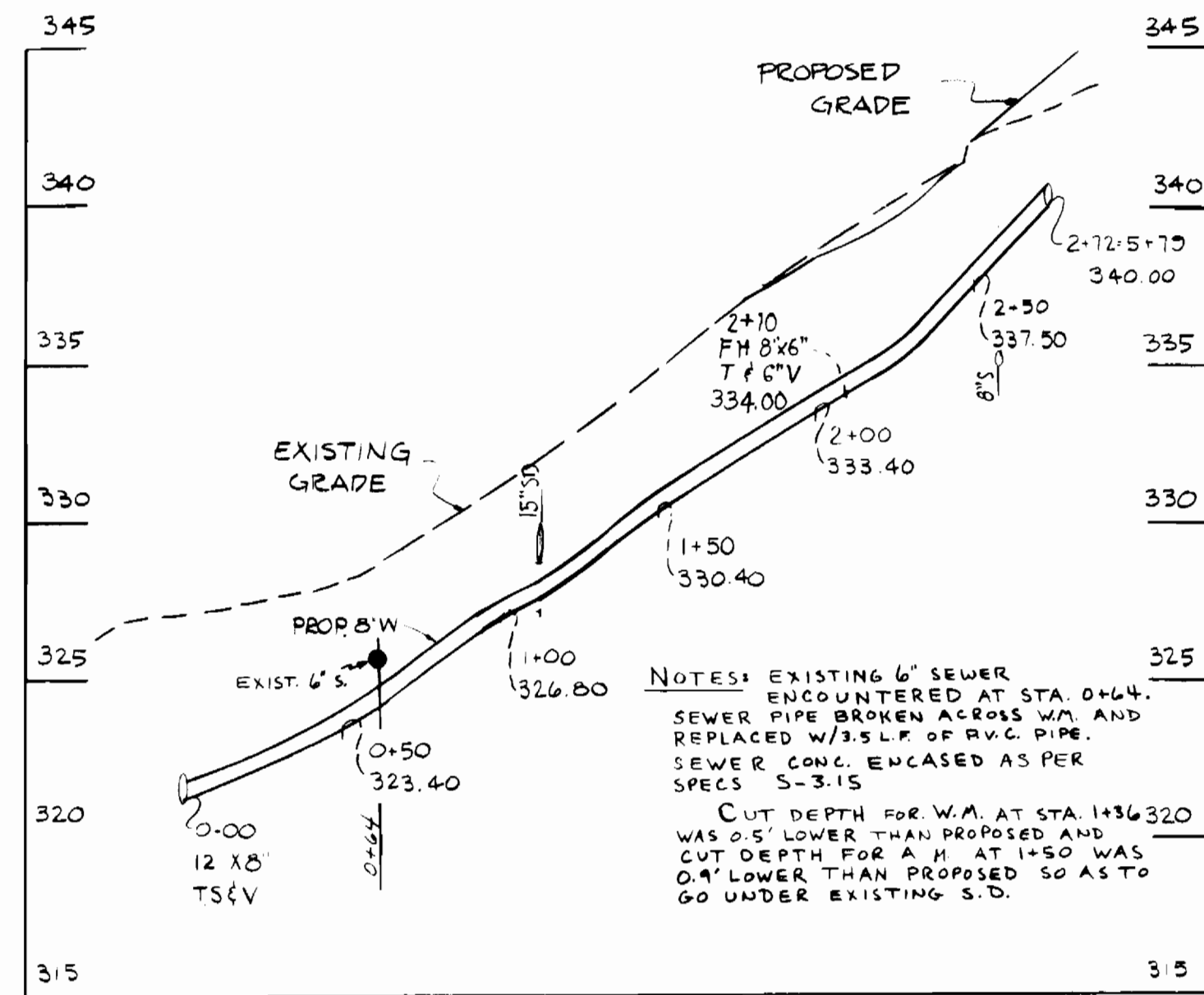
DES:			
DRN:			
CHK:			
DATE:	AT-1	1	Revised Water Main - Eliminate FH & Added Bldg. 6-26-85
BY:		NO.	REVISION
DATE:			

WATER MAIN EXTENSION
 PLAN
 600' SCALE MAP NO. 17-18 BLOCK NO.

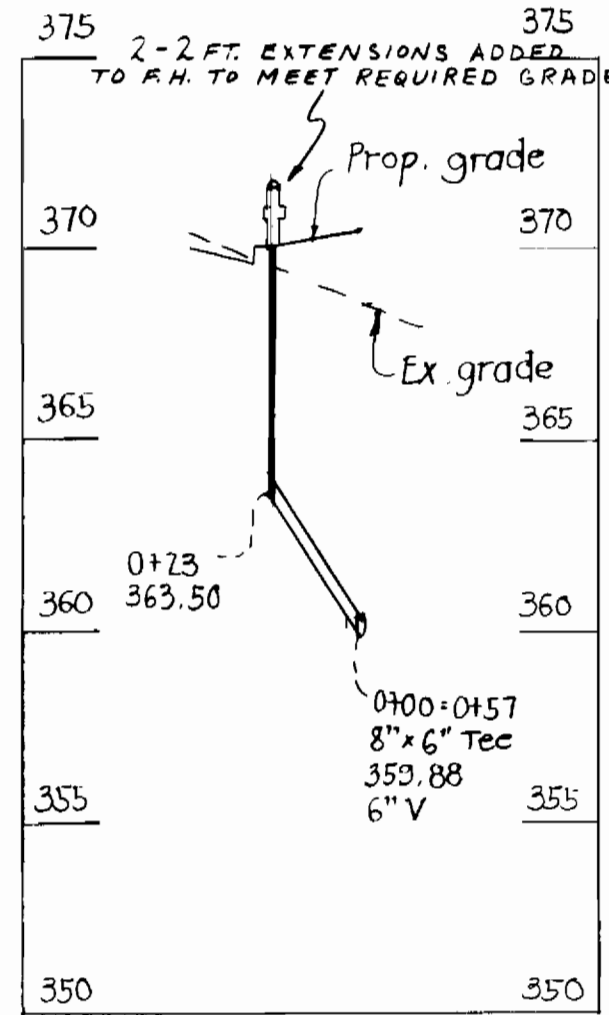
NORMANDY SHOPPING CENTER (PHASE II)
 SECOND ELECTION DISTRICT HOWARD COUNTY, MARYLAND
 CONTRACT NO. 44-1323-D
 SCALE 1" = 50'
 SHEET 2 OF 3

2-10-86	Added 6" w @ Bldg. B & C	ART
Date	Description	Name
4-16-85	Revised Water House Connection From 8" to 2"	Joshua Flaxman

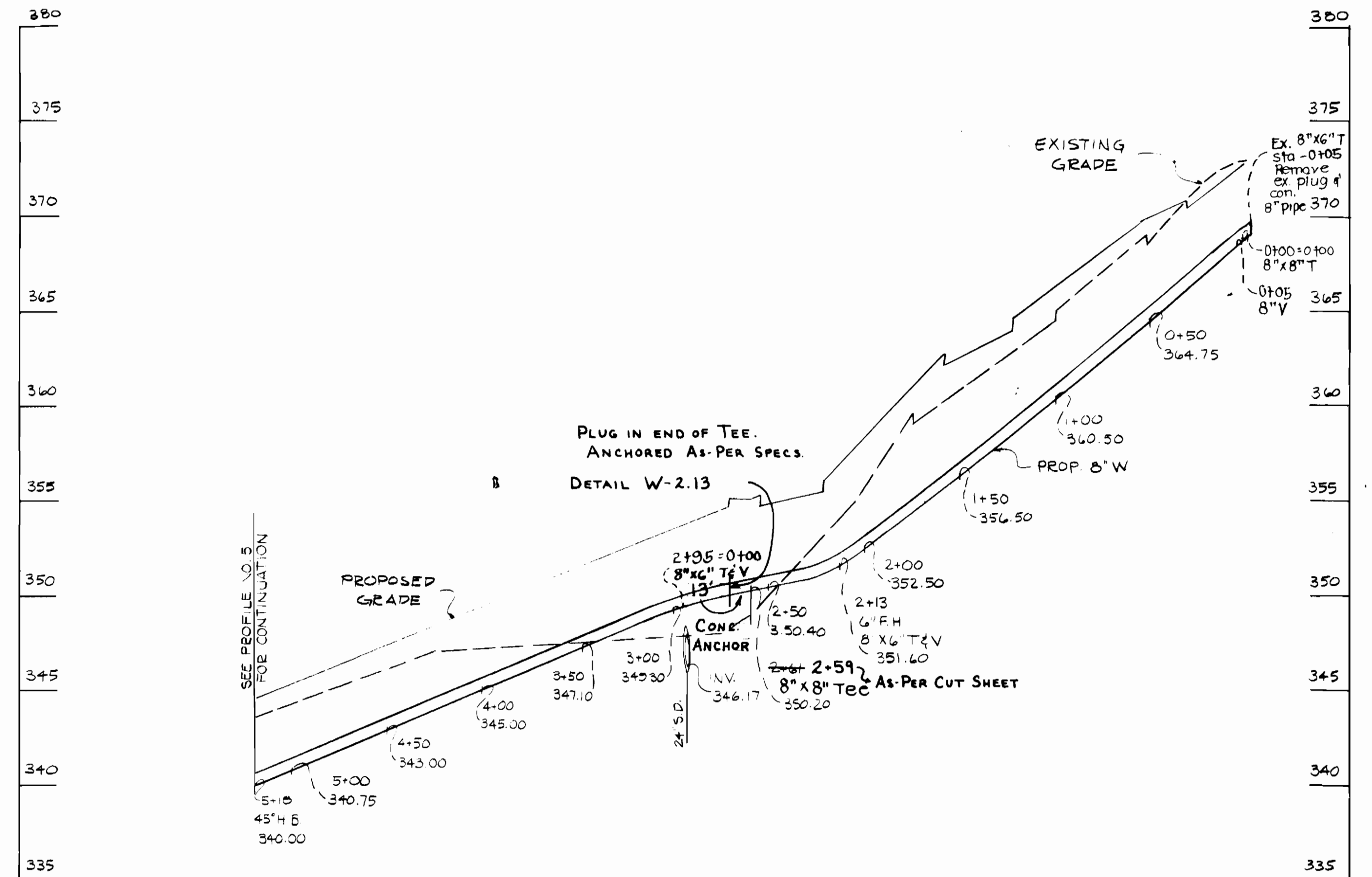
As BUILT 7-25-86



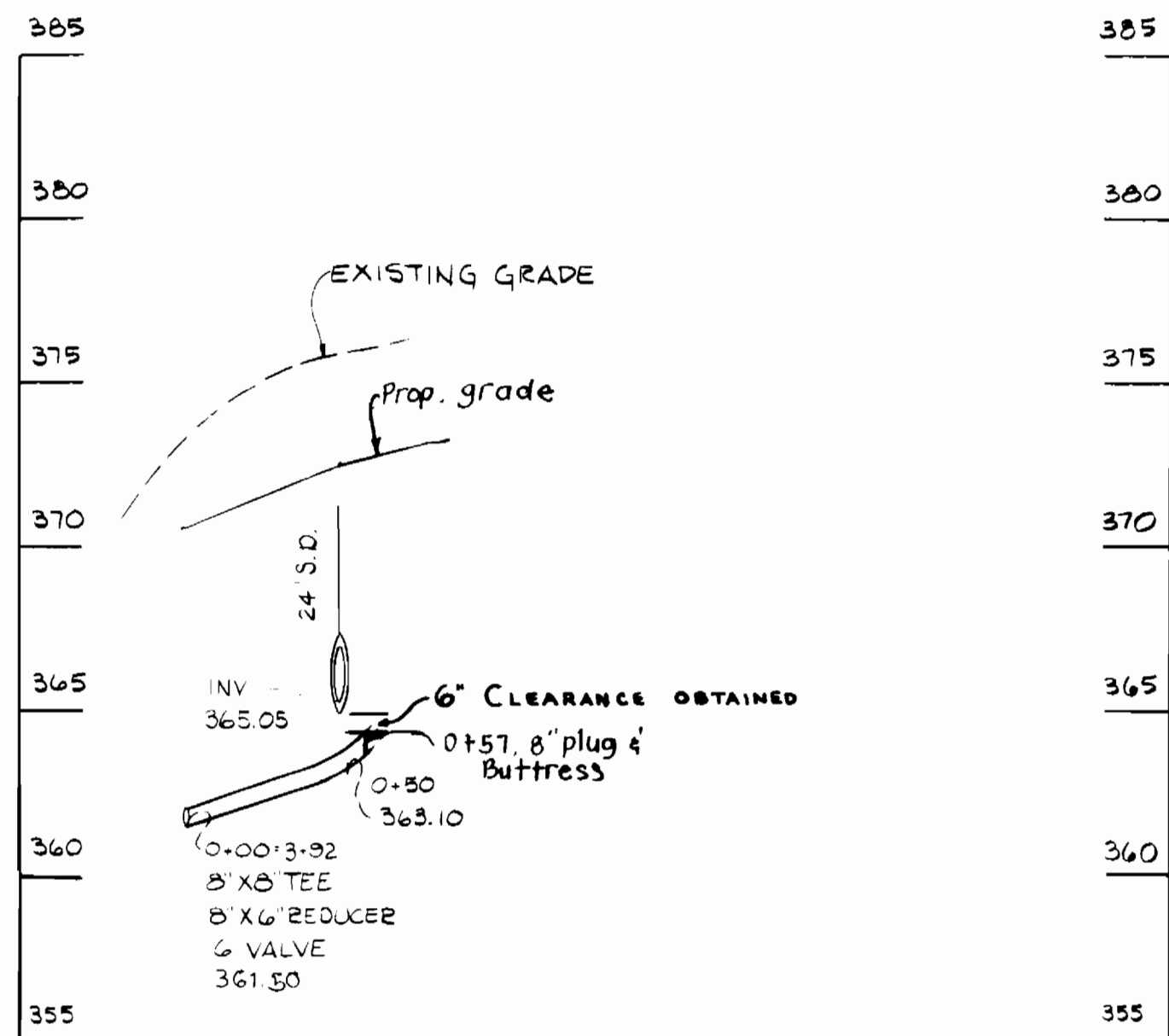
PROFILE NO. 6 (8\"/>



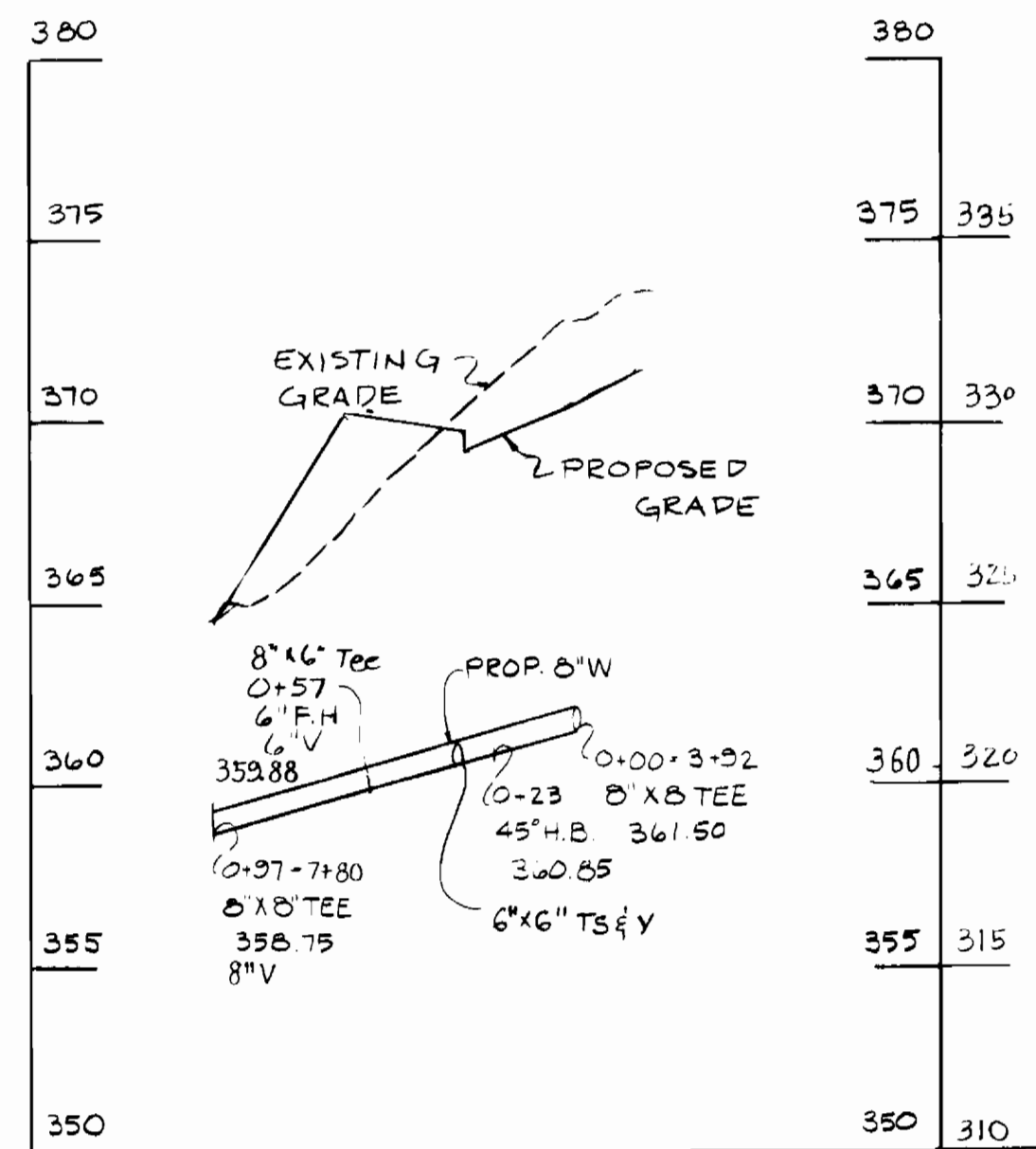
PROFILE NO. 7 (8\"/>



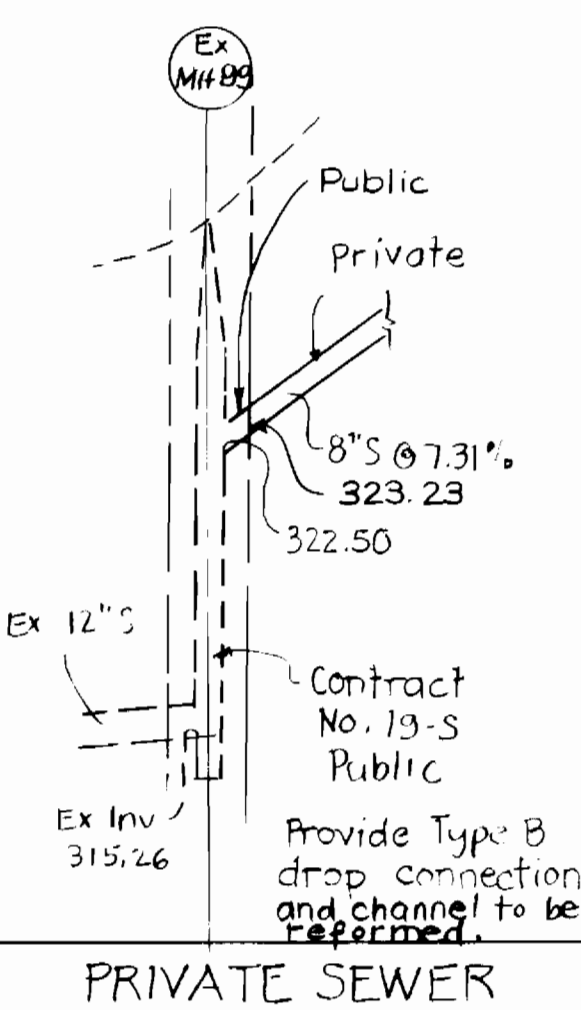
PROFILE NO. 4 (8\"/>



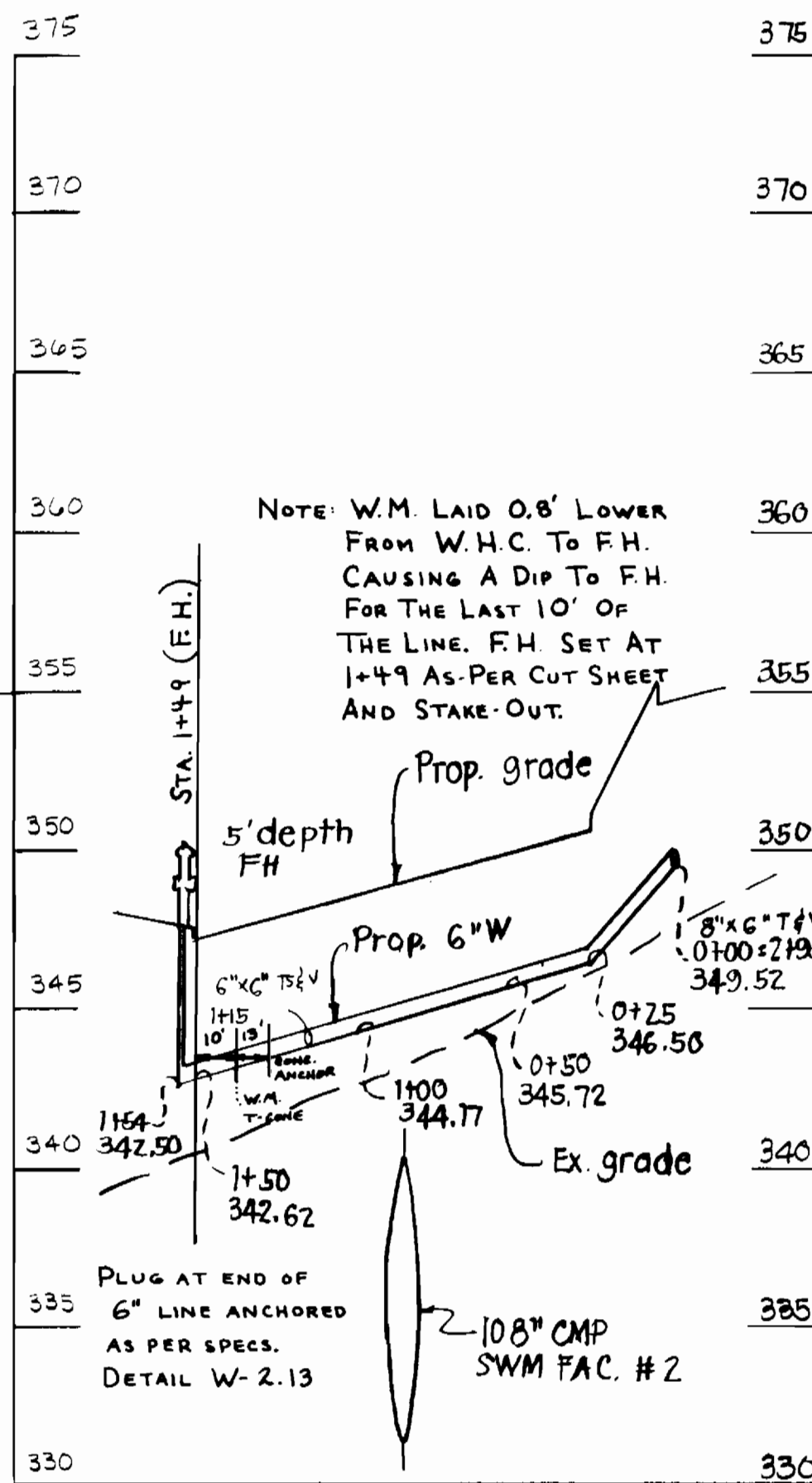
PROFILE NO. 2 (6\"/>



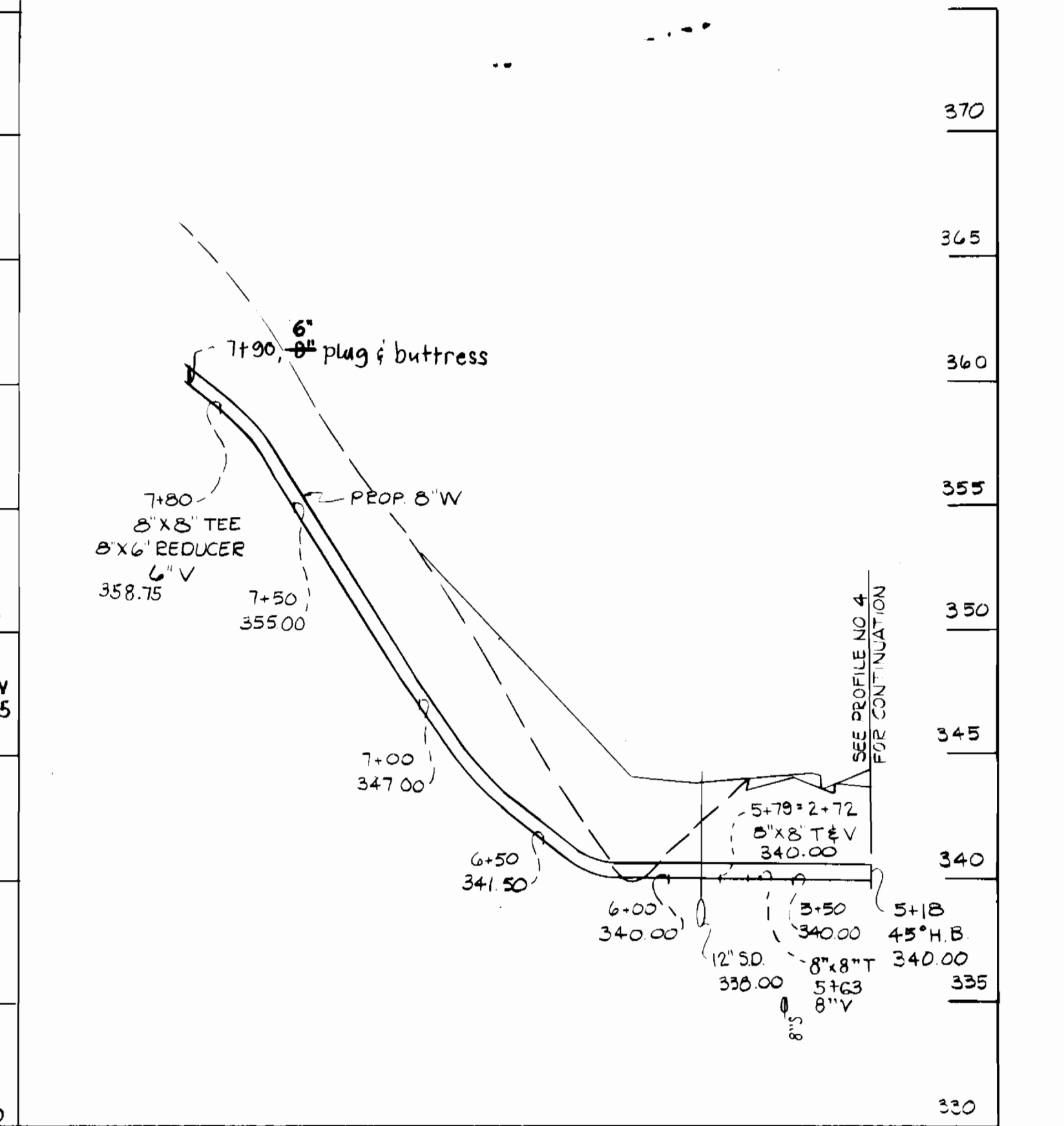
PROFILE NO. 3 (8\"/>



PRIVATE SEWER



PROFILE NO. 7



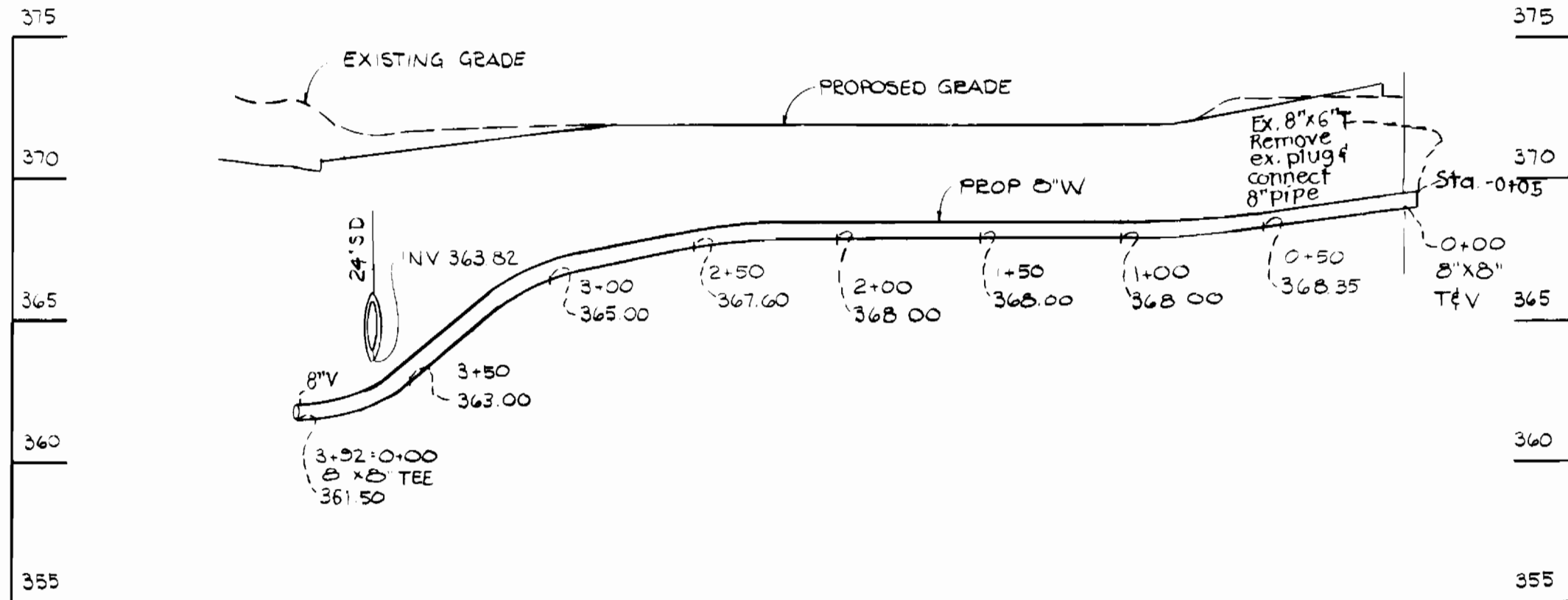
PROFILE NO. 5 (8\"/>

Sediment Control Measures will be implemented in accordance with Article No. 15 of the Specifications & with Site Development Plan SDR-84-297, Drawing Sediment & Erosion Control.

REVIEWED FOR HOWARD SOIL CONSERVATION DISTRICT AND MEETS TECHNICAL REQUIREMENT.
 SIGNATURE: *[Signature]* DATE: 1/29/85
 US SOIL CONSERVATION SERVICE

This Development Plan is approved for Soil Erosion and Sediment Control by the Howard Soil Conservation District.

APPROVED:
 SIGNATURE: *[Signature]* DATE: 1/29/85
 HOWARD S.C.D.



PROFILE NO. 1 (8\"/>

DES:					
DRN:					
CHK:					
DATE:	ART	1	Added Profile No. 7 & Erased portion of Prof. 5	DATE	
BY:	NO.			REVISION	

WATER MAIN EXTENSION PROFILE

NORMANDY SHOPPING CENTER (PHASE II)
 SECOND ELECTION DISTRICT HOWARD COUNTY, MARYLAND
 CONTRACT NO. 44-1323-D 14-1323-D

SCALE: HOR. 1"=50' VERT. 1"=5'
 SHEET 3 OF 3

As BUILT 7-25-86