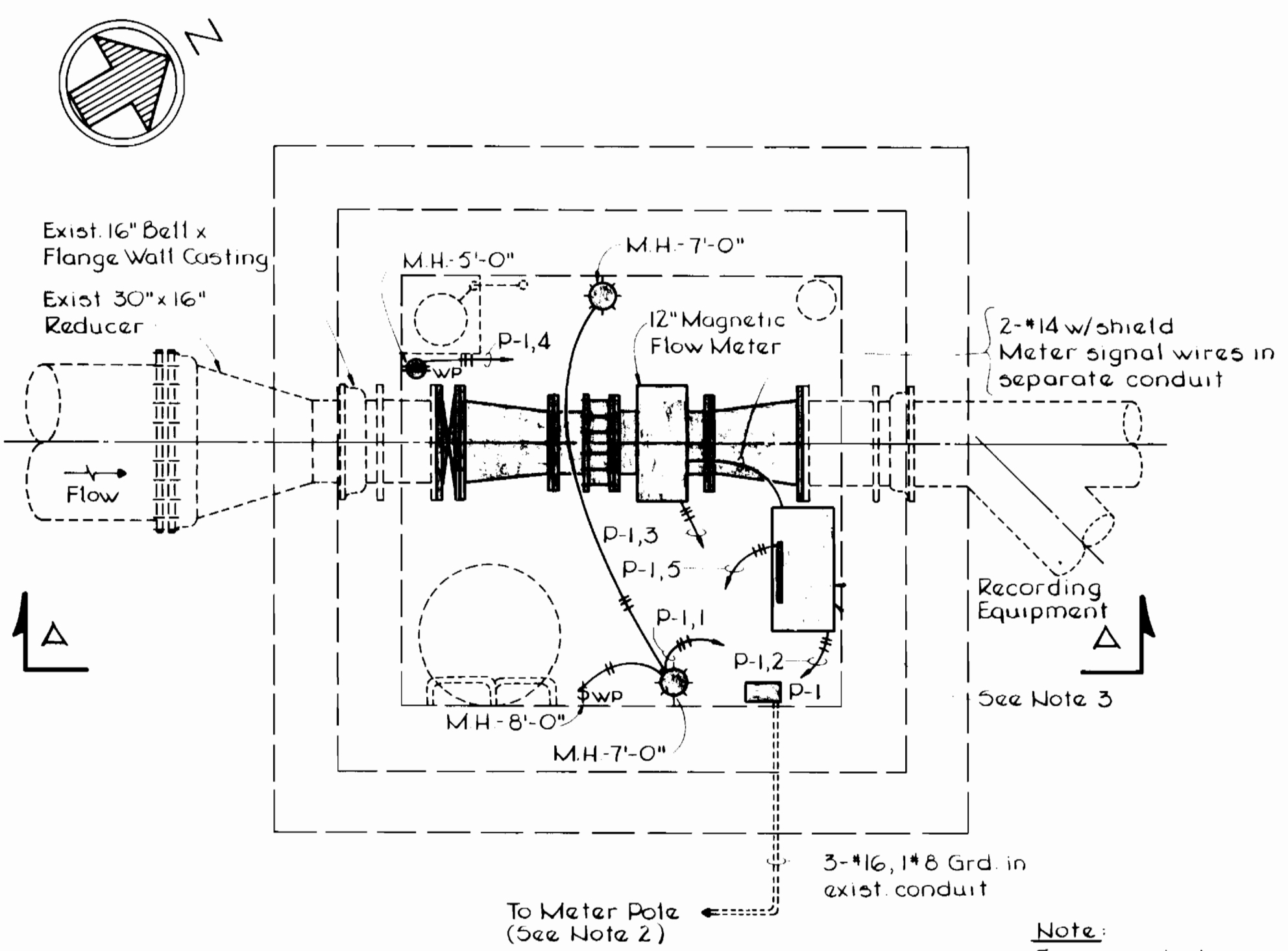


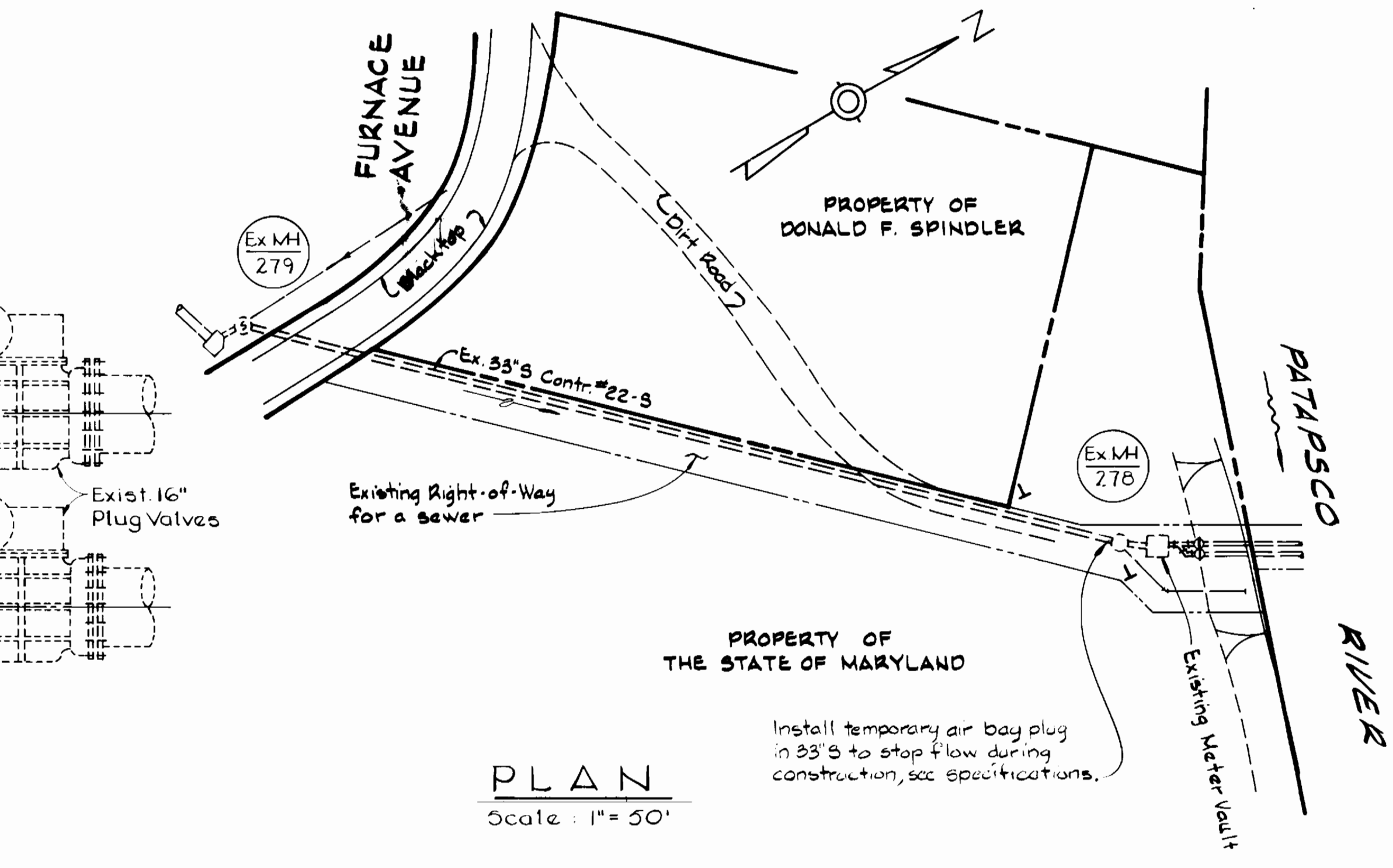
PLAN
EXISTING VAULT AND EQUIPMENT
Scale: 1/2" = 1'-0"



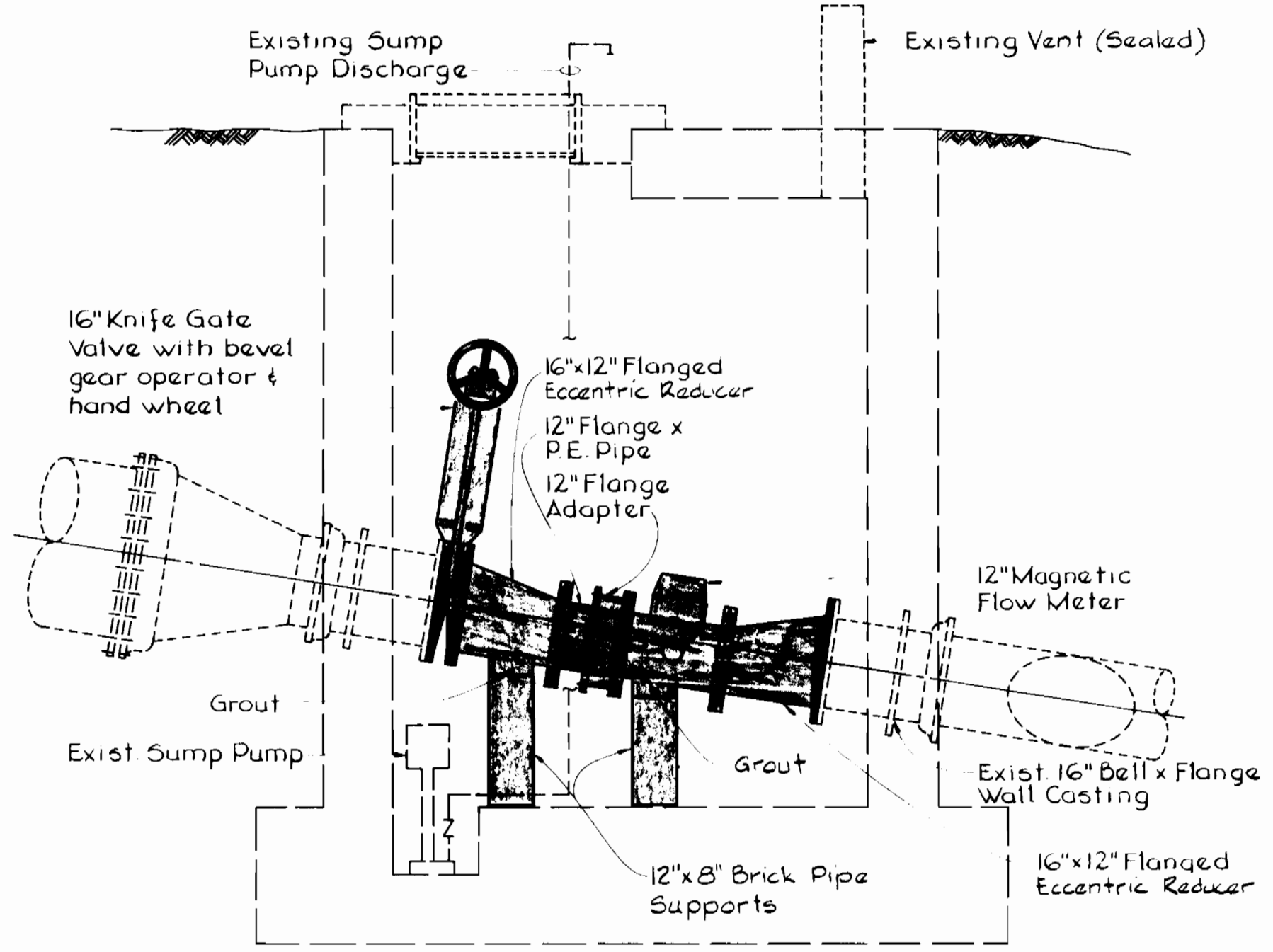
PLAN
FINISHED INSTALLATION
Scale: 1/2" = 1'-0"

ELECTRICAL LEGEND

- ⊕ Weatherproof Duplex Receptacle
- ⊕wp Weatherproof Toggle Switch
- ⊕-1 Breaker Panel P-1 (NEMA 4X Enclosure)
- ⊕ Strip Heater
- ⊙ Wall Mounted Light Fixture
- P-1,5 Circuit 5 in Panel P-1, 3 Conductors (Hot Wire, Neutral and Ground)
- M.H. Mounting Height



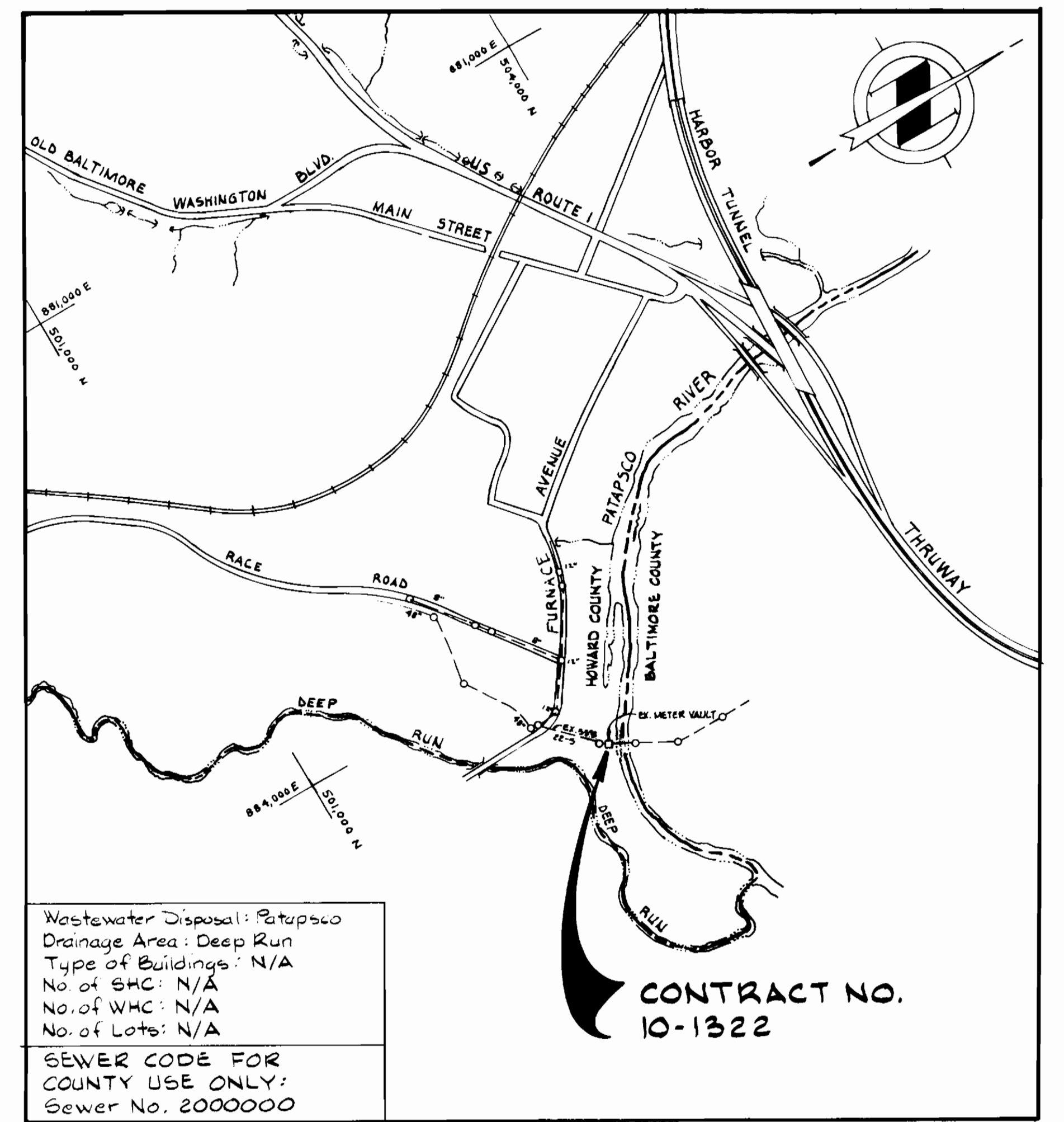
PLAN
Scale: 1" = 50'



SECTION 'A-A'
Scale: 1/2" = 1'-0"

ELECTRICAL NOTES

- ALL WIRING NOT OTHERWISE NOTED SHALL BE #12 AWG IN 3/4" PVC OR LIQUID TIGHT FLEXIBLE CONDUIT.
- INSTALL 60A., 2 POLE BREAKER IN EXISTING PANEL AT METER POLE.
- METER RECORDING EQUIPMENT SHALL BE INSTALLED IN NEMA 4 X FIBERGLASS EPOXY CABINET. STRIP HEATER SHALL BE INSTALLED IN CABINET.



VICINITY MAP
Scale: 1" = 600'

GENERAL NOTES

- APPROXIMATE LOCATION OF EXISTING MAINS ARE SHOWN. THE CONTRACTOR SHALL TAKE ALL NECESSARY PRECAUTIONS TO PROTECT EXISTING MAINS AND SERVICES AND MAINTAIN UNINTERRUPTED SUPPLY. ANY DAMAGE INCURRED SHALL BE REPAIRED IMMEDIATELY TO THE SATISFACTION OF THE ENGINEER, AT THE CONTRACTOR'S EXPENSE.
- ALL HORIZONTAL CONTROLS ARE BASED ON MARYLAND STATE COORDINATES.
- ALL VERTICAL CONTROLS ARE BASED ON U.S.G.S. DATUM.
- ALL PIPE ELEVATIONS SHOWN ARE INVERT ELEVATIONS.
- CONTRACTOR SHALL NOTIFY THE FOLLOWING UTILITIES OR AGENCIES AT LEAST FIVE (5) WORKING DAYS BEFORE STARTING WORK SHOWN ON THESE PLANS:
BALTIMORE GAS & ELECTRIC COMPANY - SERVICE-561-2585
"MISS UTILITY" - 1 - 559-0100.
CHESAPEAKE & POTOMAC (C&P) TELEPHONE COMPANY - 393-3648.
AMERICAN TELEPHONE AND TELEGRAPH - CABLE LOCATION DIVISION - 1 - 865-3803.
BUREAU OF UTILITIES HOWARD COUNTY - 992-2366.
- FOR DETAILS NOT SHOWN ON THE DRAWINGS, AND FOR MATERIALS AND CONSTRUCTION METHODS, USE HOWARD COUNTY DESIGN MANUAL, VOLUME IV, STANDARD SPECIFICATIONS AND DETAILS FOR CONSTRUCTION. THE CONTRACTOR SHALL HAVE A COPY OF VOLUME IV ON THE JOB.

DEPARTMENT OF PUBLIC WORKS
HOWARD COUNTY, MARYLAND

W. F. Nimmick 5-6-76
DIRECTOR OF PUBLIC WORKS - DATE

Robert M. Beatty 4-30-86
CHIEF - BUREAU OF UTILITIES - DATE

Chief - Bureau of Engineering - DATE
Chief - Utility Design - DATE

WHITMAN, REQUARDT
AND ASSOCIATES
ENGINEERS

2315 ST PAUL ST
BALTIMORE, MARYLAND



| | | | |
|---------------|---------|----------|------|
| DES: E.F.D. | | | |
| DRN: T.W.A. | | | |
| CHK: R.B.N. | | | |
| DATE: 4-23-85 | BY: NO. | REVISION | DATE |

VICINITY MAP
AND
DETAILS

600' SCALE MAP NO. 22 BLOCK NO. 5

ELKRIDGE
ELECTION DISTRICT NO. 1
DEEP RUN METER VAULT
PROJECT NO. S-6124
CONTRACT NO. 10-1322

SCALE AS SHOWN
SHEET 1 OF 1