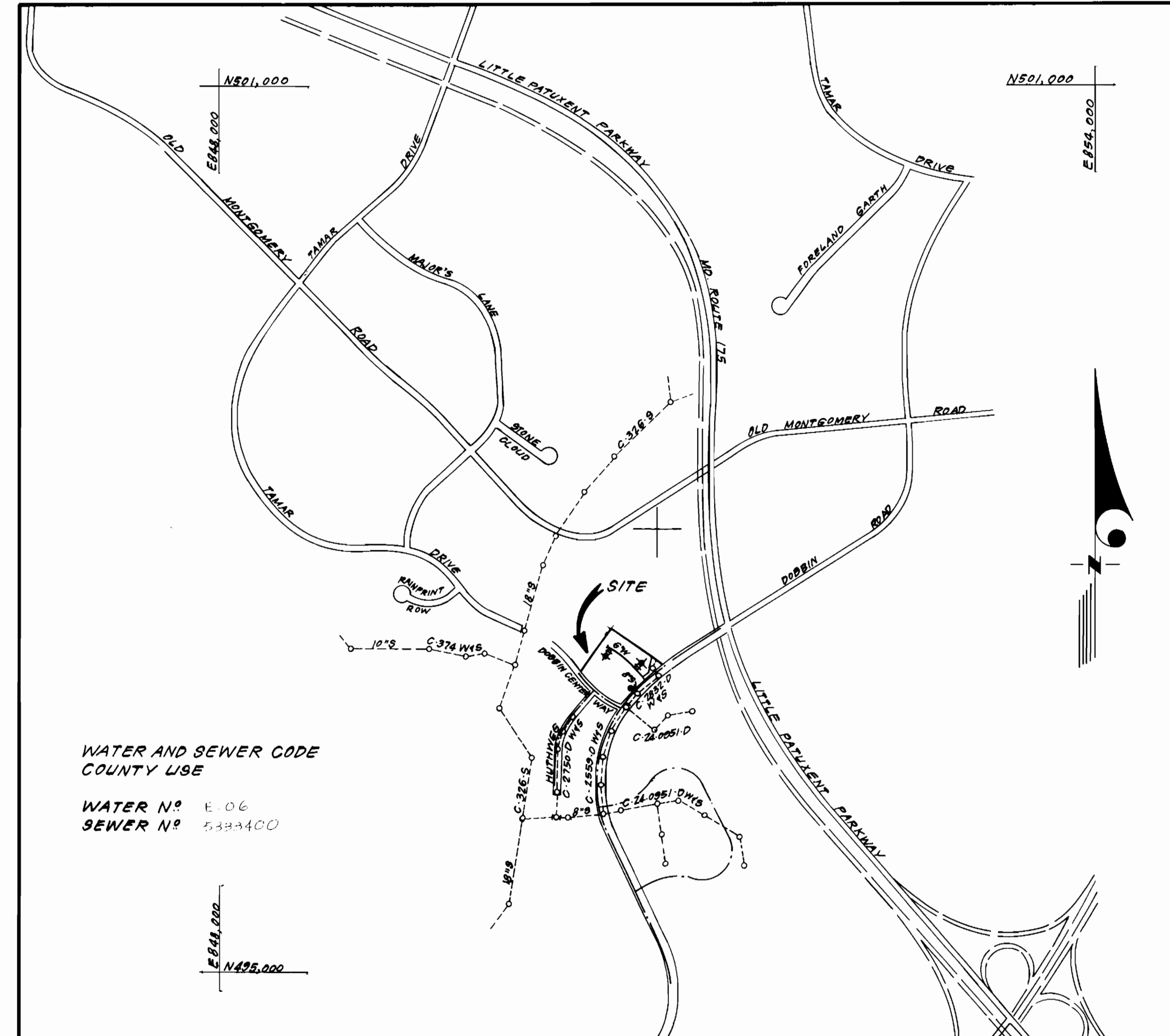


TYPE OF BUILDING	Restaurant
NUMBER OF UNITS	1
NUMBER OF SHC'S	1
NUMBER OF WHC'S	1
DRAINAGE AREA	Little Patuxent



VICINITY MAP

GENERAL NOTES

- Approximate location of existing mains are shown. The contractor shall take all necessary precautions to protect existing mains and services and maintain uninterrupted supply. Any damage incurred shall be repaired immediately to the satisfaction of the Inspector, at the contractor's expense.
- All horizontal controls are based on Maryland State Coordinates.
- All vertical controls are based on U.S.G.S. Datum.
- All pipe elevations shown are invert elevations.
- Clear all utilities by a minimum of 6" clear all poles by 2'-0" minimum or tunnel as required. Any cost incurred to the contractor for tunneling or bracing at poles shall be included in unit prices bid for excavation and backfill.
- For details not shown on the drawings use Howard County Standard Details.
- For materials and construction methods use Howard County Standard Specifications.
- Contractor shall locate existing utilities a minimum of two (2) weeks in advance of construction operations in the vicinity of proposed utilities at his own expense.
- Contractor shall notify the following utilities or agencies at least five (5) working days before starting work shown on these plans.
 - State Highway Administration - 531-5533
 - Baltimore Gas & Electric Company - Contractor Services - 561-2585
 - Baltimore Gas & Electric Company - Underground Damage Control - 234-5621
 - Baltimore Gas & Electric Company - Trouble Shooting - 298-9013
 - "Miss Utility" - 1-559-0100
 - Chesapeake & Potomac (C & P) Telephone Company - 725-9976
 - Colonial Pipeline Company - 795-1390
 - Bureau of Utilities Howard County - 992-2366
- Trees are to be protected from damage to maximum extent. Trees located within the construction strip are not to be removed or damaged by the contractor.
- Contractor shall remove trees, stumps, and roots along line of excavation as directed by the Inspector. Payment for such removal shall be included in the unit price bid for excavation and backfill.
- Place regulation "Men Working" and warning signs as required to comply with Maryland State Highway Administration Manual of Traffic Control for Highway Construction and Maintenance Operations.
- All water mains to be D.I.P. unless otherwise noted.
- Top of all water mains to have a minimum of 3-1/2' cover unless otherwise noted.
- Valves adjacent to tees shall be strapped to tees.
- Block all fittings with concrete.
- Bury line elevations on fire hydrants shall be set to the elevations shown on the drawings. All fire hydrants shall be strapped and buttressed with concrete in accordance with standard details. Soil around the fire hydrant to be compacted in accordance with Section 10.03 of the Standard Specifications.
- The contractor shall not operate any water main valves on the existing system.
- All sewer mains shall be C.S.P.X., V.C.P.X., P.V.C., or A.C.P. Class 2400 unless otherwise noted.
- The contractor shall provide a joint in all sewer mains within 2'-0" of exterior manhole wall.
- All manholes shall be 4'-0" inside diameter, unless otherwise noted.
- Water main and water house connection lines must have a minimum of one foot separation from the sanitary sewer and sewer house connections as they cross. Except at crossings, water and sewer lines shall have a minimum horizontal separation of 10'.
- All water house connections shall be for inside meter setting unless otherwise shown.

WATER AND SEWER CODE
COUNTY USE

WATER N^o E.06
SEWER N^o 53334C0

CONTRACT NO. 24 - 1317 - D
DOBBIN ROAD COMMERCIAL CENTER
SECTION I AREA I, PARCEL L-3
HOWARD COUNTY, MARYLAND
DEPARTMENT OF PUBLIC WORKS

QUANTITIES			
ITEM	ESTM'D	AS-BUILT	MATERIAL/SUPPLIER
8" S	73 LF	73 LF	A&P Water & Sewer
4" M	1 EA	1 EA	" " "
6" SHC	10 LF	10 LF	" " "
6" W	326 LF	326 LF	" " "
F.H.	2 EA	2 EA	Bellair Rd. Supplies
6" V	1 EA	1 EA	A&P Water/Bew. Supplies

Sediment Control Measures will be implemented in accordance with Article No. 15 of the Specifications & with Site Development Plan SDP-85-36; Drawing , Sediment & Erosion Control.

REVIEWED FOR HOWARD SOIL CONSERVATION DISTRICT AND MEETS TECHNICAL REQUIREMENT.

John M. Miller 12-18-84
SIGNATURE DATE

U.S. SOIL CONSERVATION SERVICE

This Development Plan is approved for Soil Erosion and Sediment Control by the Howard Soil Conservation District.

APPROVED:

Howard S.C.D. 12/18/84
HOWARD S.C.D. DATE

DEPARTMENT OF PUBLIC WORKS
HOWARD COUNTY, MARYLAND

George F. Neumy 12-21-84
DIRECTOR OF PUBLIC WORKS DATE

William B. Pate 12-21-84
CHIEF, BUREAU OF ENGINEERING DATE

William B. Pate 12-21-84
CHIEF, BUREAU OF UTILITIES DATE

William B. Pate 12-21-84
CHIEF, LAND DEVELOPMENT DIV. DATE

CFE CLARK-FINEFROCK & SACKETT
ENGINEERS-PLANNERS-SURVEYORS

11315 LOCKWOOD DRIVE SILVER SPRING, MARYLAND 20904
(301) 593-3400



DES: B.E.P.			
DRN: V.L.B.			
CHK: B.E.P.			
DATE: 11/84	BY NO.	REVISION	DATE

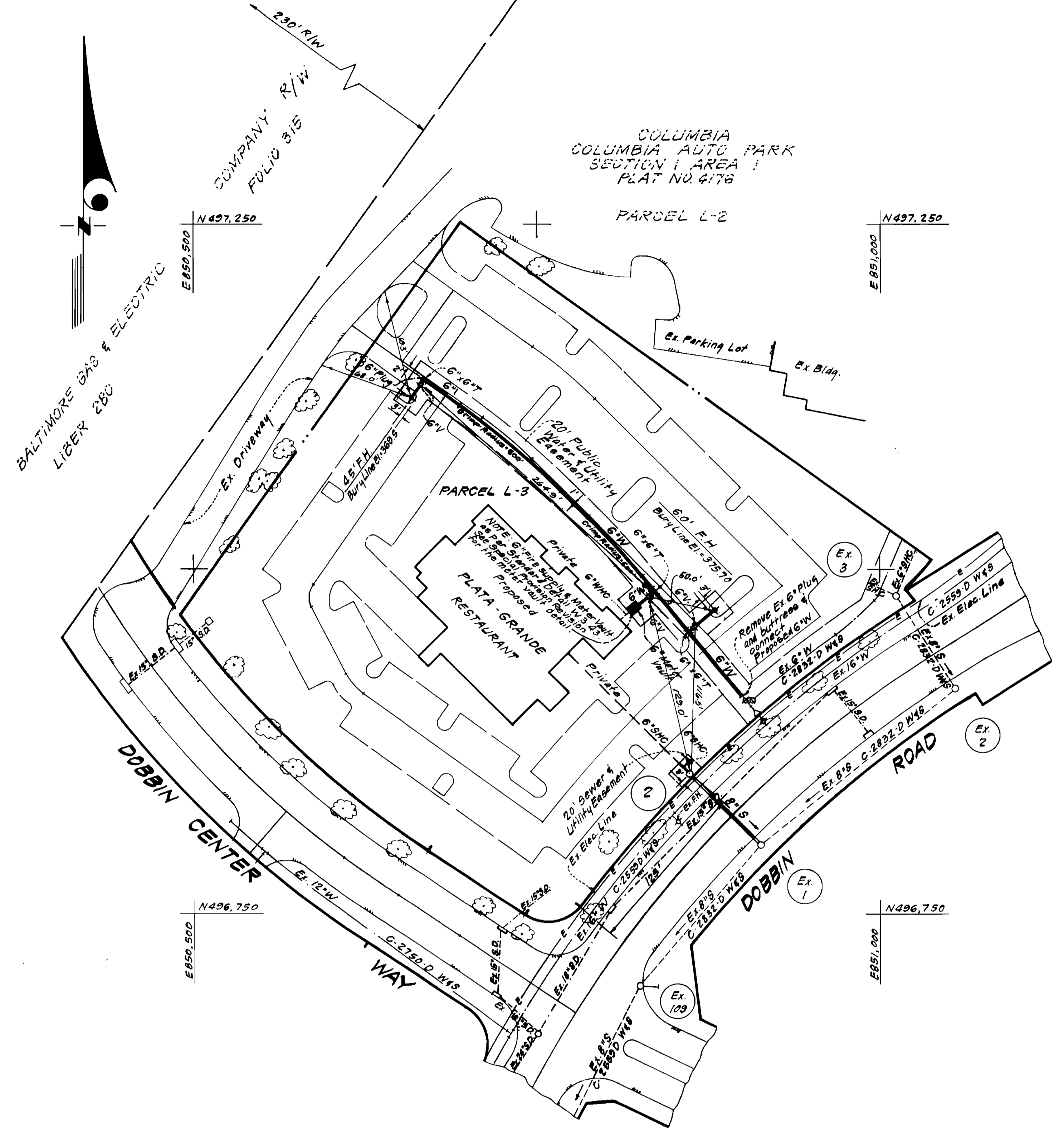
TITLE SHEET

600' SCALE MAP NO. 36 BLOCK NO.

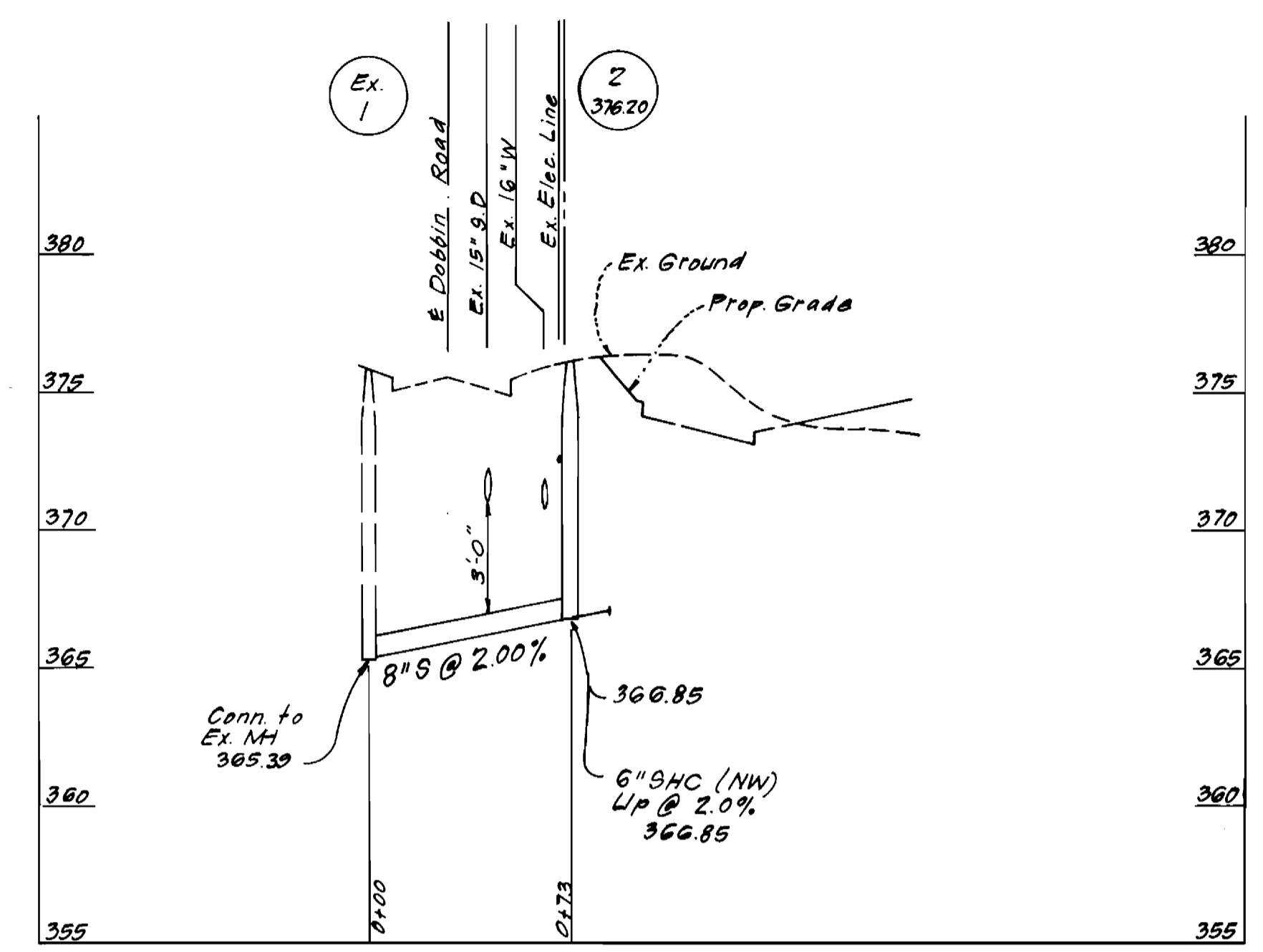
DOBBIN ROAD COMMERCIAL CENTER
SECTION I AREA I, PARCEL L-3
6 ELECTION DISTRICT
CONTRACT NO. 24-1317-D

SCALE
1" = 600'

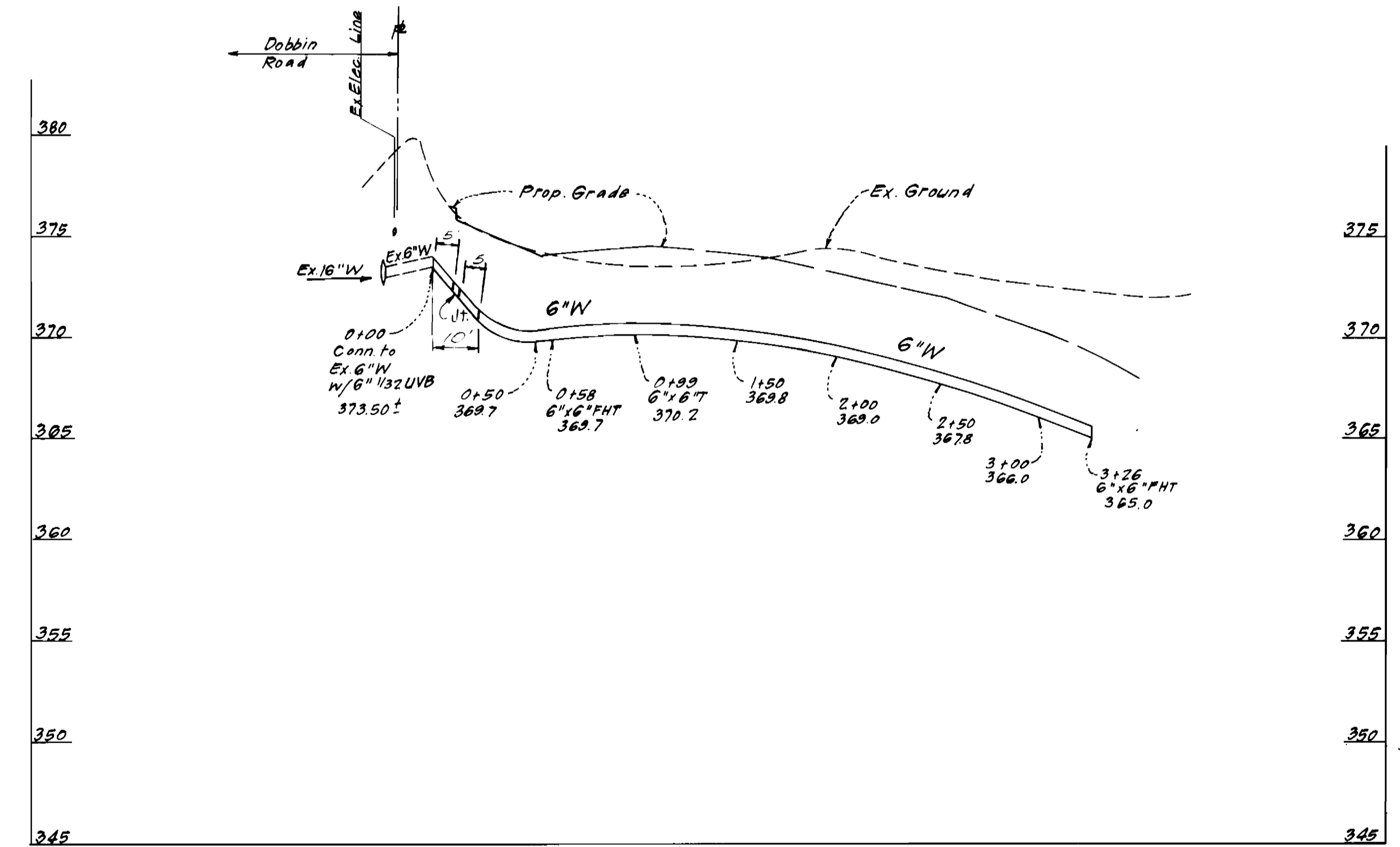
SHEET
1 OF 2



PLAN VIEW SCALE
1" = 50'



PROFILE SCALE
HORZ. : 1" = 50'
VERT. : 1" = 5'



DEPARTMENT OF PUBLIC WORKS
HOWARD COUNTY, MARYLAND

John F. Neumy
DIRECTOR OF PUBLIC WORKS
DATE: 10-21-84

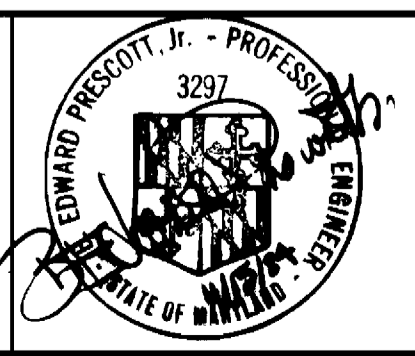
William J. Ray
CHIEF, BUREAU OF ENGINEERING
DATE: 12-1-84

Robert J. ...
CHIEF, BUREAU OF UTILITIES
DATE: 11-1-84

...
CHIEF, LAND DEVELOPMENT DIV.
DATE: 11-1-84

CF&S CLARK · FINEPROCK & SACKETT
ENGINEERS · PLANNERS · SURVEYORS

11315 LOCKWOOD DRIVE SILVER SPRING, MARYLAND 20904
(301) 593-3400



DES: B.E.P.			
DRN: V.L.B.			
CHK: B.E.P.			
DATE: 11/84	BY: NO.	REVISION	DATE

PLAN & PROFILES OF
WATER & SEWER MAINS

600' SCALE MAP NO. 36 BLOCK NO.

DOBBIN ROAD COMMERCIAL CENTER
SECTION I AREA I, PARCEL L-3
6TH ELECTION DISTRICT
CONTRACT NO. 24-1317-D

SCALE
AS SHOWN

SHEET
2 OF 2