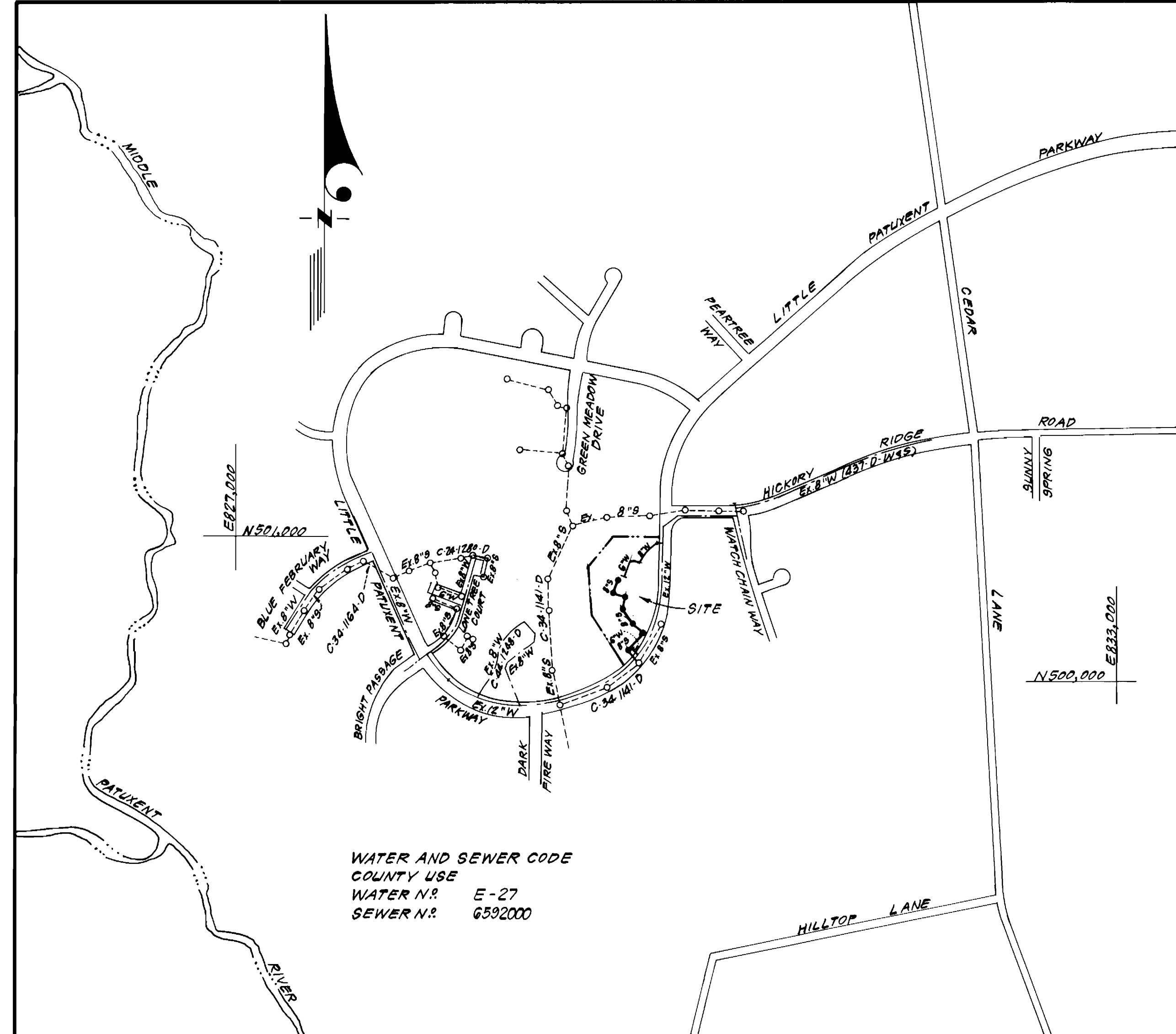


| | |
|------------------|-----------------|
| TYPE OF BUILDING | Condominiums |
| NUMBER OF UNITS | 96 |
| NUMBER OF WHC'S | 12-1/2' ; 1-3' |
| NUMBER OF SHC'S | 8-6" ; 5-8" |
| DRAINAGE AREA | Middle Patuxent |



WATER AND SEWER CODE
 COUNTY USE
 WATER N: E-27
 SEWER N: 6592000

VICINITY MAP

GENERAL NOTES

- Approximate location of existing mains are shown. The contractor shall take all necessary precautions to protect existing mains and services and maintain uninterrupted supply. Any damage incurred shall be repaired immediately to the satisfaction of the Inspector, at the contractor's expense.
- All horizontal controls are based on Maryland State Coordinates.
- All vertical controls are based on U.S.G.S. Datum.
- All pipe elevations shown are invert elevations.
- Clear all utilities by a minimum of 6" clear all poles by 2'-0" minimum or tunnel as required. Any cost incurred to the contractor for tunneling or bracing at poles shall be included in unit prices bid for excavation and backfill.
- For details not shown on the drawings use Howard County Standard Details.
- For materials and construction methods use Howard County Standard Specifications & HoCo. Design Manual, Volume II. The contractor shall have a copy of Volume II on the job.
- Contractor shall locate existing utilities a minimum of two (2) weeks in advance of construction operations in the vicinity of proposed utilities at his own expense.
- Contractor shall notify the following utilities or agencies at least five (5) working days before starting work shown on these plans.
 - State Highway Administration - 531-5533
 - Baltimore Gas & Electric Company - Contractor Services 561-2585
 - Baltimore Gas & Electric Company - Underground Damage Control 234-5621
 - Baltimore Gas & Electric Company - Trouble Shooting 298-9013
 - "Miss Utility" - 1-559-0100
 - Chesapeake & Potomac (C & P) Telephone Company - 725-9976
 - Colonial Pipeline Company - 795-1390
 - Bureau of Utilities Howard County - 992-2366
- Trees are to be protected from damage to maximum extent. Trees located within the construction strip are not to be removed or damaged by the contractor.
- Contractor shall remove trees, stumps, and roots along line of excavation as directed by the Inspector. Payment for such removal shall be included in the unit price bid for excavation and backfill.
- Place regulation "Men Working" and warning signs as required to comply with Maryland State Highway Administration Manual of Traffic Control for Highway Construction and Maintenance Operations.
- All water mains to be D.I.P. unless otherwise noted.
- Top of all water mains to have a minimum of 3'-1/2' cover unless otherwise noted.
- Valves adjacent to tees shall be strapped to tees.
- Block all fittings with concrete.
- Bury line elevations on fire hydrants shall be set to the elevations shown on the drawings. All fire hydrants shall be strapped and buttressed with concrete in accordance with standard details. Soil around the fire hydrant to be compacted in accordance with Section 10.23 of the Standard Specifications.
- All water house connections shall be for an outside meter, setting. 1/2" WHC's shall have a meter vault built in accordance with the special provisions. Vault locations are shown on the drawings. The contractor shall not operate any water main valves on the existing system.
- All sewer mains shall be C.S.P.X. with low cradle, V.C.P.X. with low cradle, P.V.C. SDR 35 encased in gravel, ACP Class 3300 or D.I.P. Class 52.
- The contractor shall provide a joint in all sewer mains within 2'-0" of exterior manhole wall.
- All manholes shall be 4'-0" inside diameter, unless otherwise noted.
- Water main and water house connection lines must have a minimum of one foot separation from the sanitary sewer and sewer house connections as they cross. Except at crossings, water and sewer lines shall have a minimum horizontal separation of 10'.
- For all Copper Water House Connections, utilize flared type fittings only.
- 1/2" Thickness on manholes pertains to brick manholes only.

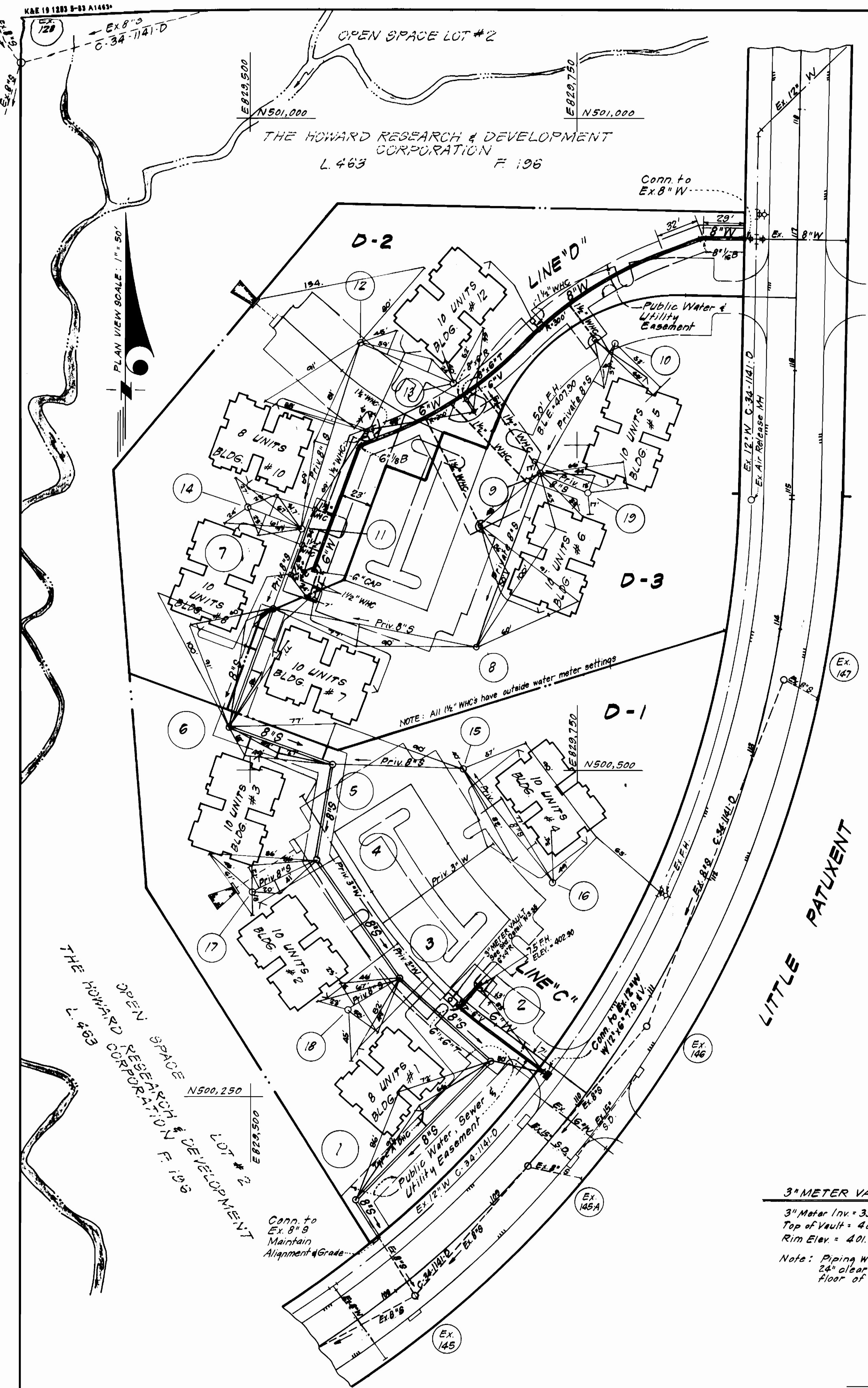
CONTRACT NO. 34-1313-D
 VILLAGE OF HICKORY RIDGE
 SECTION 3 AREA 2, PARCELS D-1, D-2 & D-3
 HOWARD COUNTY, MARYLAND
 DEPARTMENT OF PUBLIC WORKS

| QUANTITIES | | | |
|------------------|--------|----------|--------------------------|
| ITEM | ESTM'D | AS-BUILT | MATERIAL / SUPPLIER |
| 8" S | 646 LF | 620' | P.V.C. Balair, Rd Supply |
| 6" SHC | 80 LF | 84.5' | " |
| 8" W | 252 LF | 255' | DIP A&P W&S Supply |
| 6" W | 277 LF | 278' | " |
| 1/2" WHC | 407 LF | 410' | Municipal & Contractor |
| 12"x6" T.S.#V. | 1 EA. | 1 | " |
| F.H. | 2 EA. | 2 | " |
| Manholes | 7 EA. | 7 | B+C. Utility Supply Inc. |
| 1/2" Meter Vault | 12 EA. | 12 | Mayer Bros. Inc. |
| 3" Meter Vault | 1 EA. | 1 | Conc. Penn Cast Prod. |

Sediment Control Measures will be implemented in accordance with Article No. 15 of the Specifications & with Site Development Plan S.D.P. 85-79 ; Drawings 3 & 4, Sediment & Erosion Control.

REVIEWED FOR HOWARD SOIL CONSERVATION DISTRICT AND MEETS TECHNICAL REQUIREMENT.
 Signature: *James M. Velazquez* DATE: 1/23/85
 U.S. SOIL CONSERVATION SERVICE
 This Development Plan is approved for Soil Erosion and Sediment Control by the Howard Soil Conservation District.
 APPROVED:
 Signature: *Stephen J. Chubb* DATE: 1/23/85
 Howard S.C.D.

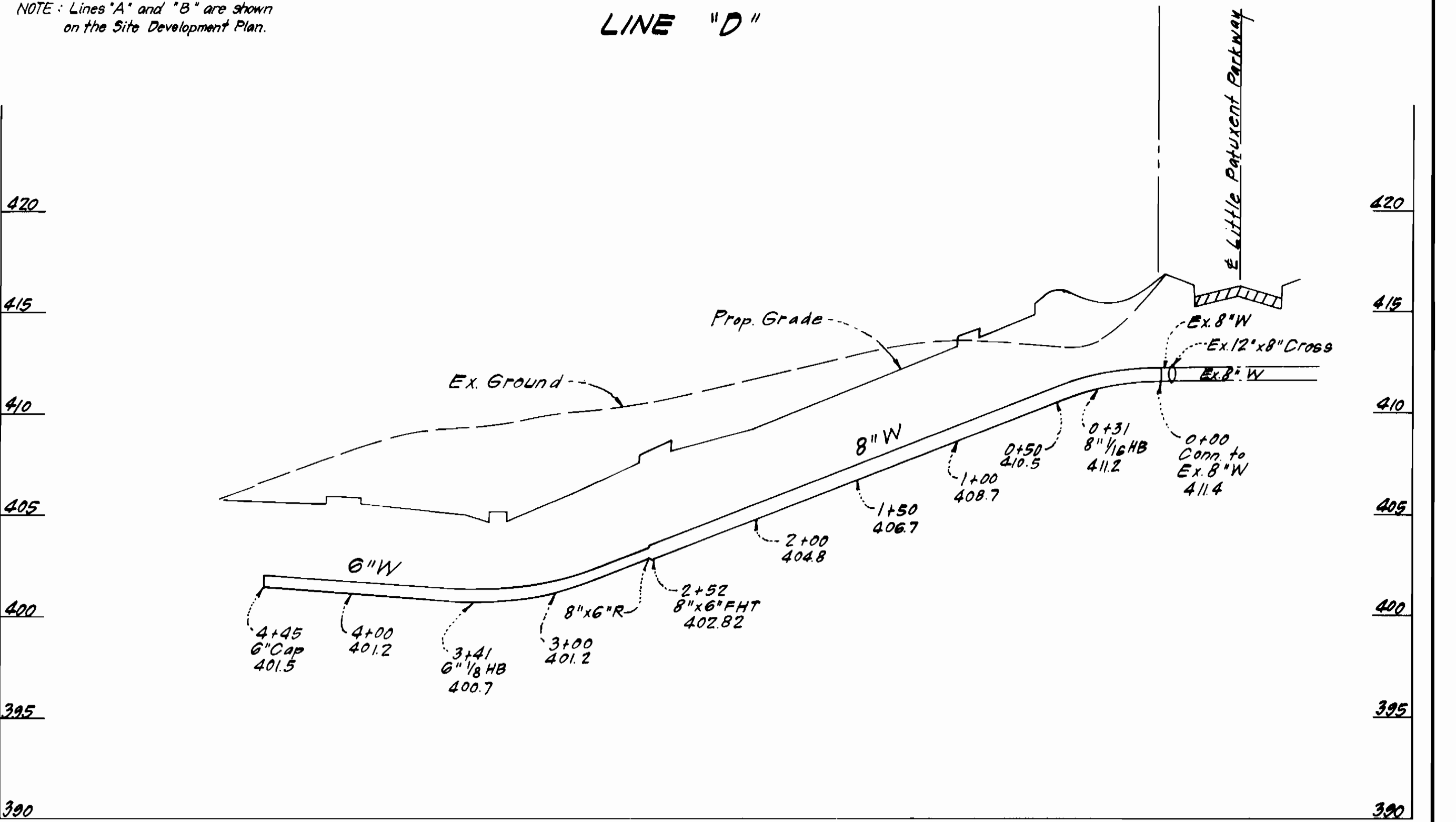
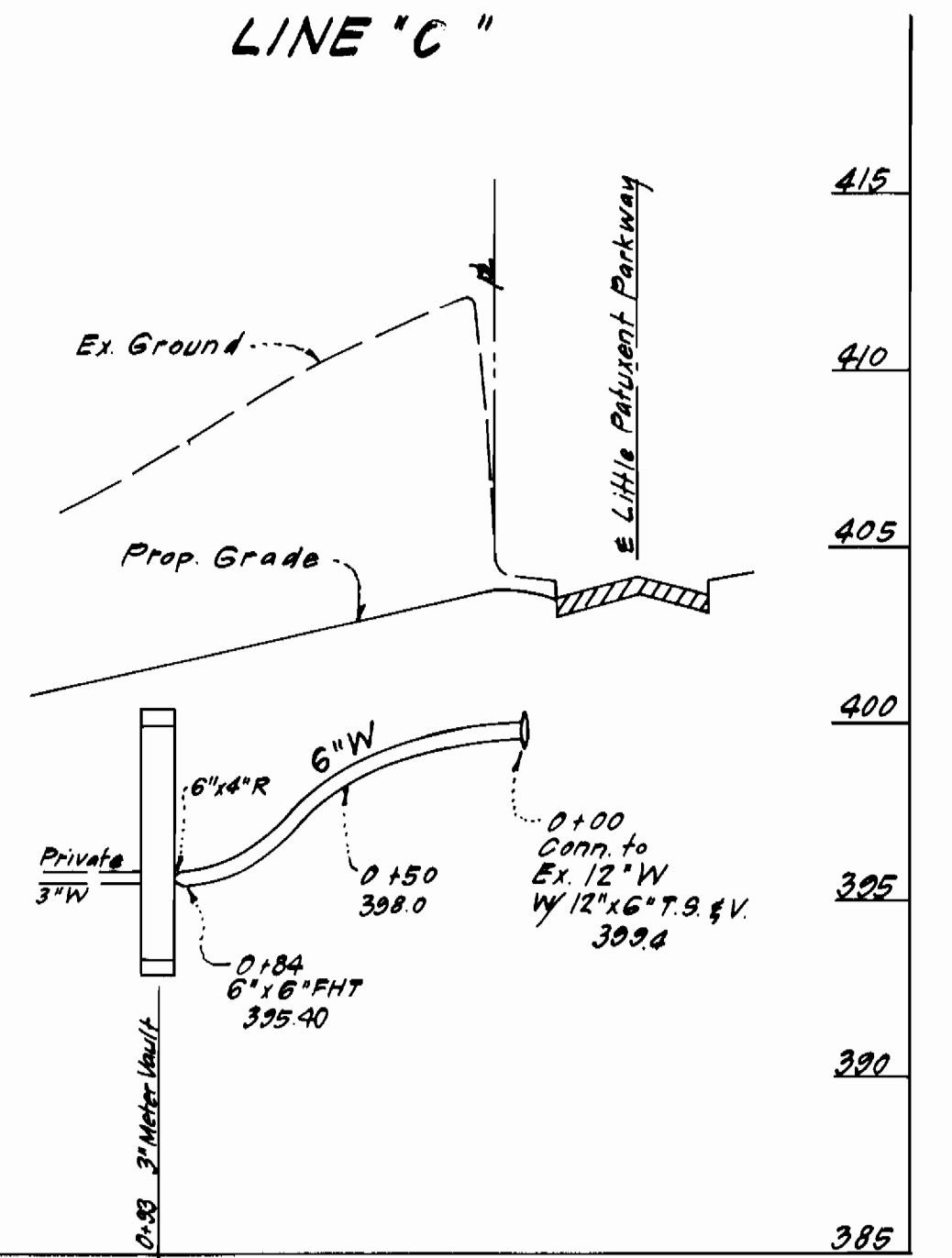
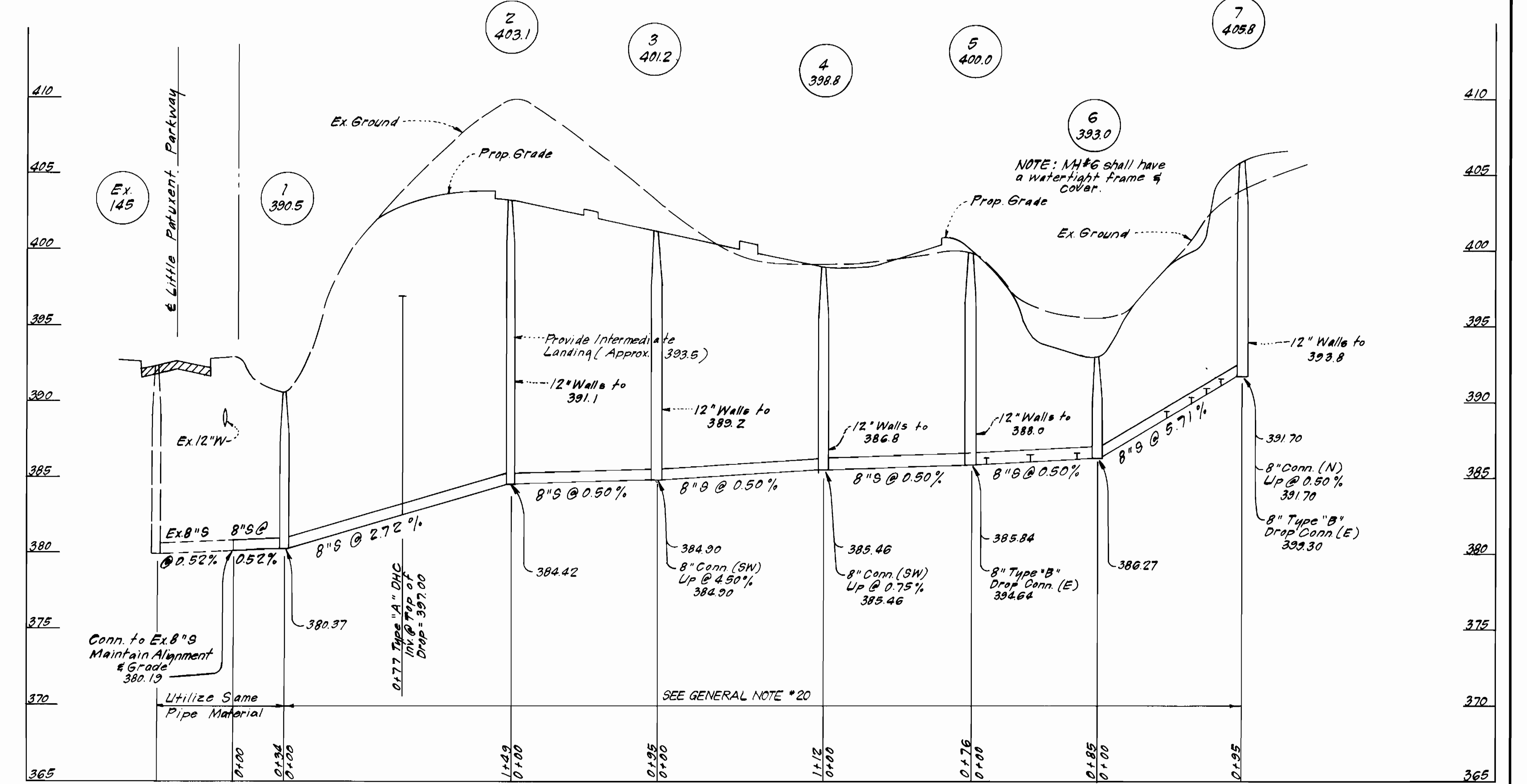
| | | | | | |
|---|---|--|-------------|---|---------------------------------------|
| DEPARTMENT OF PUBLIC WORKS HOWARD COUNTY, MARYLAND Director of Public Works: <i>Wayne F. Neuman</i> 1-29-85 Chief, Bureau of Engineering: <i>William B. Kelly</i> 1-29-85 Chief, Bureau of Utilities: <i>R. H. Berman</i> 1-29-85 | CLARK - FINEPROCK & SACKETT ENGINEERS - PLANNERS - SURVEYORS 14315 LOCKWOOD DRIVE SILVER SPRING, MARYLAND 20904 (301) 593-3400 | DES: C.K.G. DRN: V.L.B. CHK: C.K.G. DATE: 11/84 | TITLE SHEET | COLUMBIA, VILLAGE OF HICKORY RIDGE PARCELS D-1, D-2 & D-3, SECTION 3 AREA 2 6 TH ELECTION DISTRICT CONTRACT NO. 34-1313-D | SCALE 1" = 600' SHEET 1 OF 2 |
|---|---|--|-------------|---|---------------------------------------|



PARKWAY

LITTLE PATUXENT

3" METER VAULT
 3" Meter Inv. = 395.50
 Top of Vault = 400.50
 Rim Elev. = 401.76
 Note: Piping will be 24" clear from floor of vault.



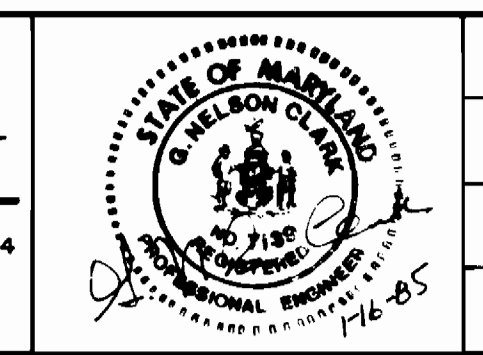
DEPARTMENT OF PUBLIC WORKS
 HOWARD COUNTY, MARYLAND

1-24-85
 DATE

1-24-85
 DATE

CFS CLARK · FINEPROCK & SACKETT
 ENGINEERS · PLANNERS · SURVEYORS

11315 LOCKWOOD DRIVE SILVER SPRING, MARYLAND 20904
 (301) 593-3400



| | | | |
|-------------|---------|----------|------|
| DES: C.K.G. | | | |
| DRN: V.L.B. | | | |
| CHK: C.K.G. | | | |
| DATE: 11/84 | BY: NO. | REVISION | DATE |

PLAN & PROFILES OF
 WATER & SEWER MAINS

600' SCALE MAP NO. 35 BLOCK NO.

COLUMBIA, VILLAGE OF HICKORY RIDGE
 PARCELS D-1, D-2 & D-3, SECTION 3 AREA 2
 6TH ELECTION DISTRICT
 CONTRACT NO. 34-1313-D

SCALE
 AS SHOWN

SHEET
 2 OF 2