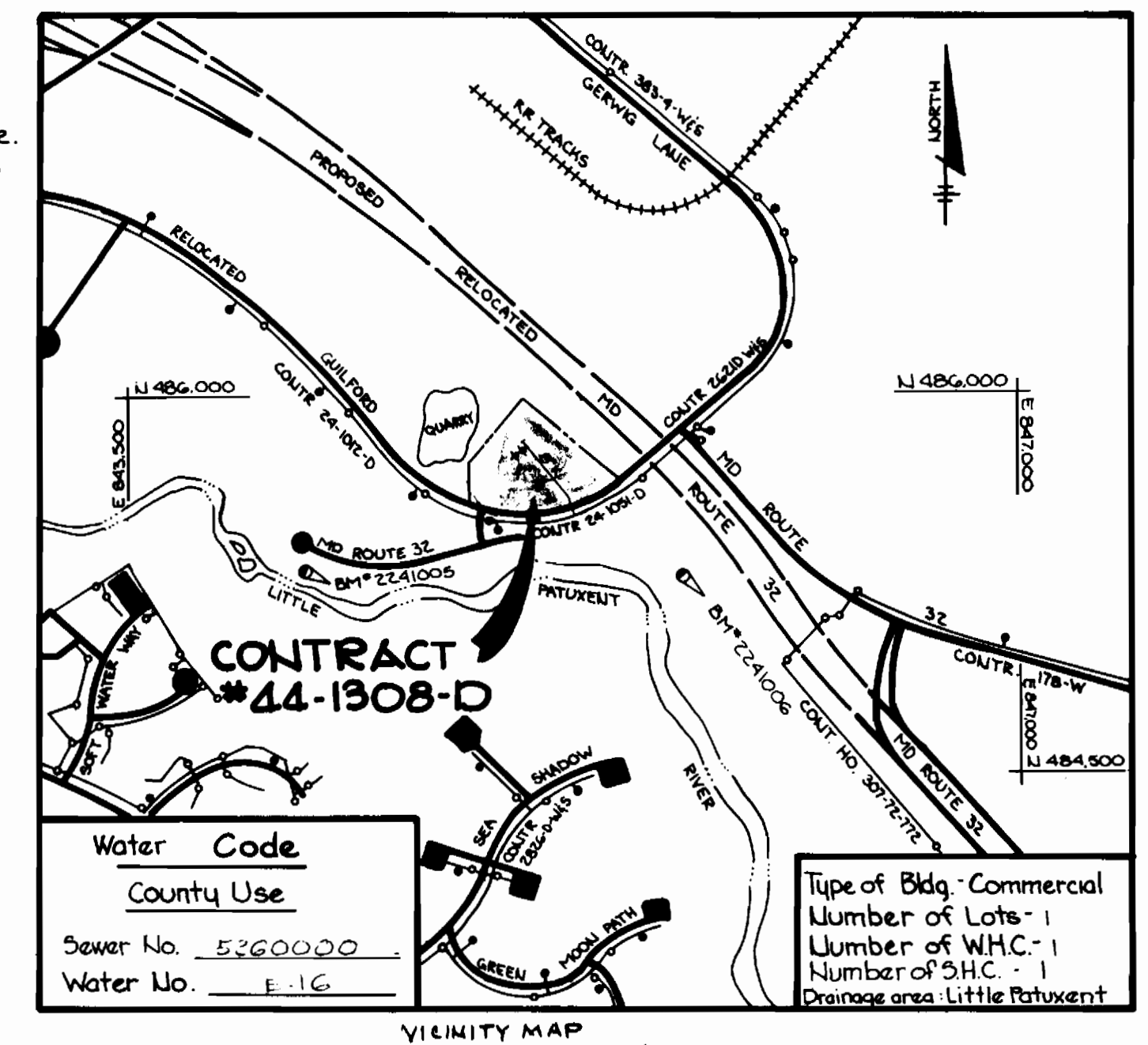


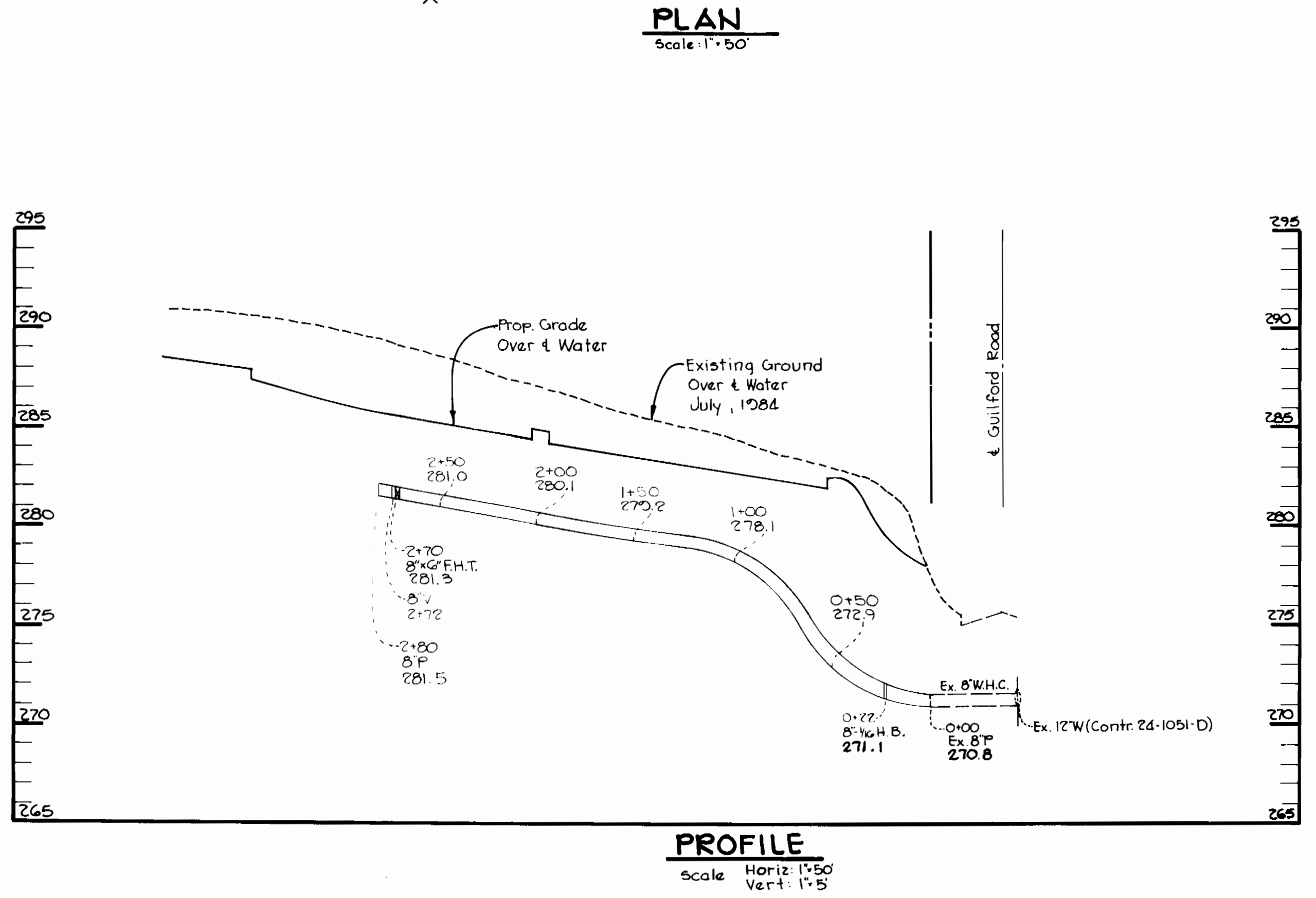
**Bench Marks**  
 Ho. Co. BM# 2241005 Elev. 264.914  
 Rebar 10" ± south of south edge of Maryland Route 32, Located 3' below surface.  
 Ho. Co. BM# 2241006 Elev. 274.878  
 Rebar 4" ± north of north edge of macadam shoulder of Maryland route 32, Located .1' below surface.



**GENERAL NOTES**

- Approximate location of existing mains are shown. The contractor shall take all necessary precautions to protect existing mains and services and maintain uninterrupted supply. Any damage incurred shall be repaired immediately to the satisfaction of the Engineer at the Contractor's expense.
- All horizontal controls are based on Maryland State Coordinates.
- All vertical controls are based on U.S.G.S. data.
- All pipe elevations shown are invert elevations.
- Clear all utilities by a minimum of 6'. Clear all poles by 2'-0" minimum or tunnel as required. The owner has contacted the utility companies and has made arrangements for bracing of poles as shown on the drawings. In the event the contractor work requires the bracing of additional poles, any cost incurred by the owner for the bracing of additional poles or damages shall be deducted from money owed the contractor. The contractor shall coordinate with the utility companies to schedule the bracing of the poles.
- For details not shown on the drawings, and for materials and construction methods, use Howard County Design Manual, Volume IV, Standard Specifications and Details for Construction. The Contractor shall have a copy of Volume IV on the job.
- Where test pits have been made on existing utilities, they are noted by the symbol at the location of the test pit. A note or notes containing the results of the test pit or pits is included on the drawings. Existing utilities in the vicinity of the proposed work for which test pits have been dug shall be located by the contractor two weeks in advance of construction operations at his own expense.
- Contractor shall notify the following utilities or agencies at least five working days before starting work shown on these plans:
 

State Highway Administration	531-5533
Baltimore Gas & Electric Co. - Contractor Services	561-2585
Baltimore Gas & Electric Co. - Under Ground Damage Control	234-5621
Baltimore Gas & Electric Co. - Trouble Shooting	298-9013
Miss Utility	1-559-0100
Colonial Pipeline Co.	795-1390
Bureau of Utilities, Howard County Department of Public Works	992-2366
- Trees are to be protected from damage to maximum extent. Trees located within the construction strip are not to be removed or damaged by the contractor.
- Contractor shall remove trees, stumps and roots along line of excavation as directed by the Engineer. Payment for such removal shall be included in the unit price bid for excavation and backfill.
- Place regulation "Men Working" and warning signs as required to comply with Maryland State Highway Administration Manual of Traffic Control for Highway Construction and Maintenance Operations.
- All water mains to be D.I.P. unless otherwise noted.
- Top of all water mains to have a minimum of 3 1/2' cover unless otherwise noted.
- Valves adjacent to trees shall be strapped to trees.
- Block all fitting with concrete.
- Bury line elevations on fire hydrants shall be set to the elevations shown on the drawings. All fire hydrants shall be strapped and buttressed with concrete in accordance with standard details. Soil around the fire hydrant to be compacted in accordance with Section 1003 & 100B of the General Requirements for Water & Sewer.
- All water house connections shall be for an inside meter setting.
- The contractor shall not operate any water main valves on the existing system.
- For all copper water house connections utilize flared type fittings only.
- Profile stations shall be adjusted as necessary to conform to Plan dimensions.
- No pipe shall be laid until lines of excavation have been brought to subgrade.



Sediment Control measures for this Contract will be implemented in accordance with Article 15 of the specification and as shown on SDP-25-53c

Howard Soil Conservation District:  
 Reviewed for Howard Soil Conservation District and meets technical requirements.  
*[Signature]* 11-27-84  
 Date  
 US Soil Conservation Service

This plan is approved for soil erosion and sediment control by the Howard Soil Conservation District.  
*[Signature]* 11-27-84  
 Date  
 Howard Soil Conservation District

QUANTITIES			
ITEM	ESTIMATED	AS BUILT	MATERIAL/SUPPLIER
8" Water	280 L.F.	281.0L.	DIP (M) GRIFFEN
F.H.s	1	1	U#U
6" Water	19 L.F.	19.5 L.F.	DIP GRIFFEN
8" Valve	1		U#U
6" Valve	1		U#U

DEPARTMENT OF PUBLIC WORKS  
 HOWARD COUNTY, MARYLAND

*[Signature]* 11-20-84  
 DIRECTOR OF PUBLIC WORKS DATE

*[Signature]* 11-29-84  
 CHIEF, BUREAU OF UTILITIES DATE

THE RIEMER GROUP, INC.  
 8659 BALTIMORE NATIONAL PIKE  
 ELLICOTT CITY, MARYLAND 21043

*[Signature]* 9-17-84  
 ARTHUR E. MUEGGE

DES: D.A.M.			
DRN: T.J.M.			
CHK: J.K.B.			
DATE: 9-17-84	BY NO.	REVISION	DATE

PLAN OF A WATER MAIN

600' SCALE MAP NO. 42 BLOCK NO.

RIVERS CORPORATE PARK  
 SECTION 2 AREA 1 PARCEL F  
 6TH ELECTION DISTRICT  
 HOWARD COUNTY MARYLAND  
 CONTRACT NO. 44-1308-D

SCALE AS SHOWN  
 SHEET 1 OF 1