

TYPE OF BUILDING	OFFICE & WAREHOUSE
NUMBER OF LOTS	1
NUMBER OF WATER H.C.	1
NUMBER OF SEWER H.C.	1
DRAINAGE AREA	LITTLE PATUXENT

PLAN SCALE: 1\"/>

GENERAL NOTES

- PART I**
- Approximate location of existing mains are shown. The contractor shall take all necessary precautions to prevent existing mains and services and maintain uninterrupted supply. Any damage incurred shall be repaired immediately to the satisfaction of the Engineer at the Contractor's expense.
 - All horizontal controls are based on Maryland State Coordinates.
 - All vertical controls are based on U.S.G.S. data.
 - All pipe elevations shown are invert elevations.
 - Clear all utilities by a minimum of 6'. Clear all poles by 2'-0" minimum or tunnel as required. The owner has contacted the utility companies and has made arrangements for bracing of poles as shown on the drawings. In the event the contractor's work requires the bracing of additional poles, any cost incurred by the owner for the bracing of additional poles or damages shall be deducted from money owed the contractor. The contractor shall coordinate with the utility companies to schedule the bracing of the poles.
 - For details not shown on the drawings, and for materials and construction methods, use Howard County Design Manual, Volume IV, Standard Specifications and Details for Construction. The contractor shall have a copy of Volume IV on the job.
 - Where test pits have been made on existing utilities, they are noted by the symbol at the location of the test pit. A note or notes containing the results of the test pit or pits is included on the drawings. Existing utilities in the vicinity of the proposed work for which test pits have not been dug shall be located by the contractor two weeks in advance of construction operations at his own expense.
 - Contractor shall notify the following utilities or agencies at least five working days before starting work shown on these plans:
 - State Highway Administration - 531-5553
 - Balt. Gas & Electric Co. - Contractor Services 961-2555
 - Balt. Gas & Electric Co. Under Ground Damage Control - 294-5621
 - Balt. Gas & Electric Co. Trouble Shooting 298-9015
 - Miss Utility - 1-800-0100
 - Colonial Pipeline Co. 709-1300
 - Bureau of Utilities, Howard Co. Dept. of Public Works - 992-2300
 - Trees and shrubs are to be protected from damage to maximum extent. Trees and shrubs located within the construction strip are not to be removed or damaged by the contractor.
 - Contractor shall remove trees, stumps and roots along line of excavation. Payment for such removal shall be included in the unit price bid for construction of the main.
- PART II - WATER**
- All water mains to be D.I.P. unless otherwise noted.
 - Top of all water mains to have a minimum of 3 1/2' cover unless otherwise noted.
 - Valves adjacent to tees shall be strapped to tees.
 - All fittings shall be buttressed or anchored with concrete in accordance with the Standard Details unless otherwise provided for on the drawings.
 - Fire hydrants shall be set to the bury line elevations shown on the drawings. All fire hydrants shall be strapped and buttressed with concrete in accordance with Standard Details. Soil around the fire hydrant shall be compacted in accordance with Section 1009 the Standard Specifications.
 - The contractor shall not operate any water main valves on the existing water system.
 - All Water House Connections Inside Meter Setting Unless Otherwise Shown
- PART III - SEWER**
- All sewer mains shall be G.P.P.C., R.C.P.P., V.C.P.P., A.C.P. Class 2400 or R.V.C. unless otherwise noted.
 - The contractor shall provide a joint in a sewer main within 2'-0" of exterior manhole wall.
 - All manholes shall be 4'-0" inside diameter unless otherwise noted.
 - Manholes shown with 12" and 18" walls are brick manholes only.
 - Manholes designated W.T. in the plan and profile shall have watertight frame and covers, Standard Detail 6-532. Where watertight manhole frame and cover is used, top of frame 1'-0" above finished grade unless otherwise noted on the drawings.
 - House (s) with the symbol "C.N.S." indicates that cellar cannot be served.

QUANTITIES			
ITEM	ESTIMATED	AS-BUILT	MATERIAL/SUPPLIER
6" Sewer	54 L.F.		
6" Cap	1 Each		
6" Sleeve & Spacer	1 Each		
6" Water	2495 L.F.	1575'	U.S. CENT. D19/A-2115
6" Water	90 L.F.	31'	" " " "
6" Valve	4 Each	6	6 Valve / M.E.H.
6" 1/2 Bend	5 Each	6	U.S. Pipe
6" 1/2 Bend	5 Each	1	
6" 1/2 Bend	5 Each	6	
6" 1/2 Bend	5 Each	6	
6" Tee	2 Each	2	
5" Fire Hydrant	4 Each	4	929 F.H./M.E.H.
Fire Hydrant	4 Each	4	
6" Tee	4 Each	4	

Bediment Control Measures For This Contract Will Be Implemented in Accordance With Article 15 of The Standard Specifications & The Approved Sediment Control Plan for This Site, SPP 24-121c

REVIEWED FOR HOWARD SOIL CONSERVATION DISTRICT AND MIBETS TECHNICAL REQUIREMENTS

M.H. Kelly 7-28-84
SIGNATURE DATE

U.S. SOIL CONSERVATION SERVICE

This Development Plan is approved for Soil Erosion and Sediment Control by the Howard County Soil Conservation District

APPROVED:
Stephen L. Hunter 9/28/84
Howard Soil Conservation District Date

DEPARTMENT OF PUBLIC WORKS
HOWARD COUNTY, MARYLAND

Michael M. ...
DIRECTOR OF PUBLIC WORKS DATE 9/28/84

William G. ...
CHIEF, BUREAU OF ENGINEERING DATE 9/28/84

William G. ...
CHIEF, LAND DEVELOPMENT DIVISION DATE 9/28/84

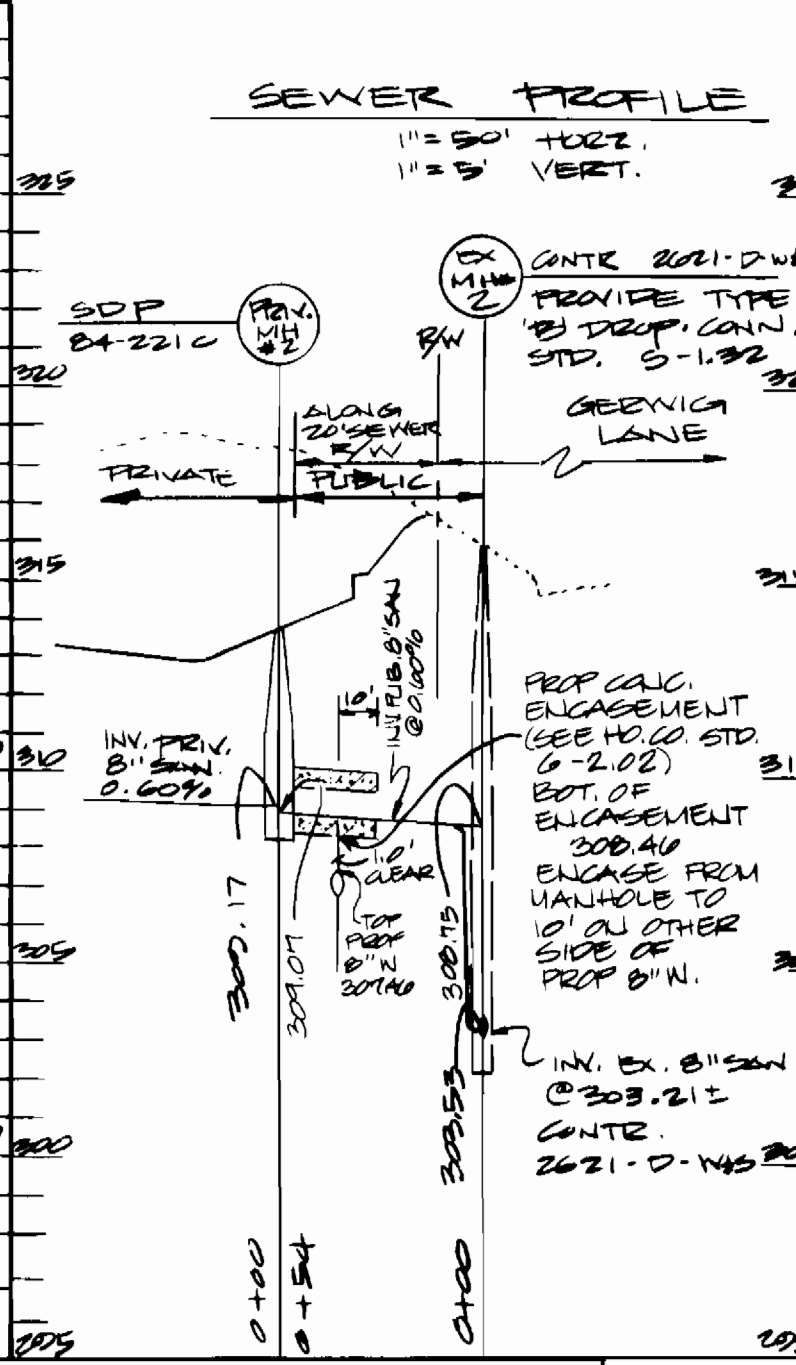
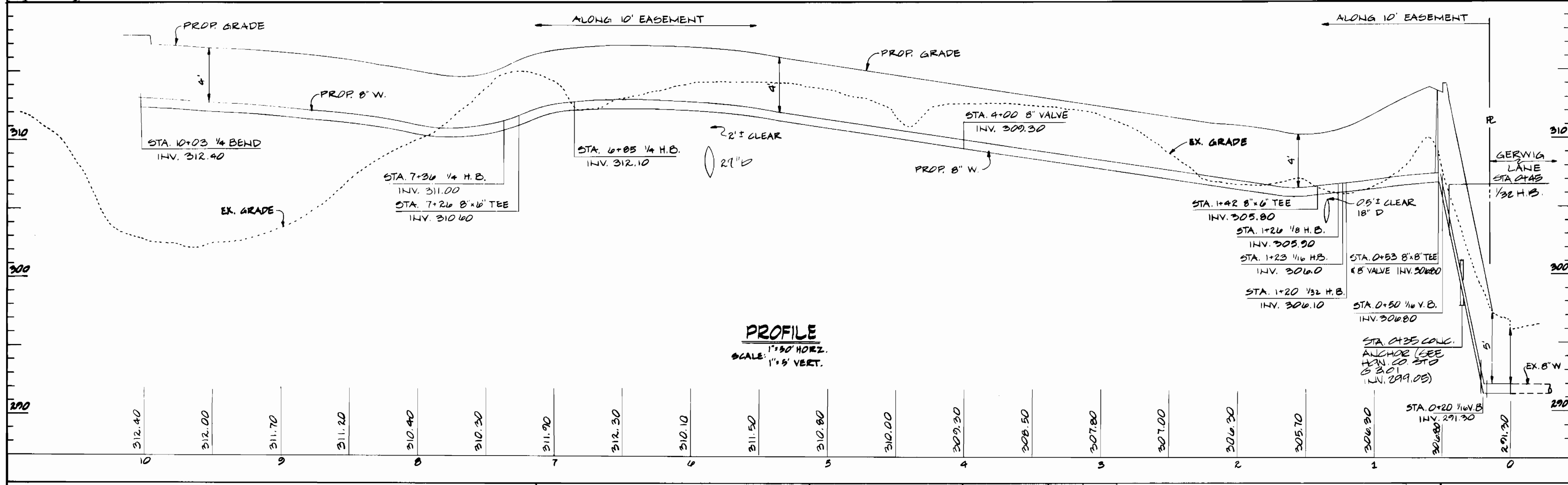
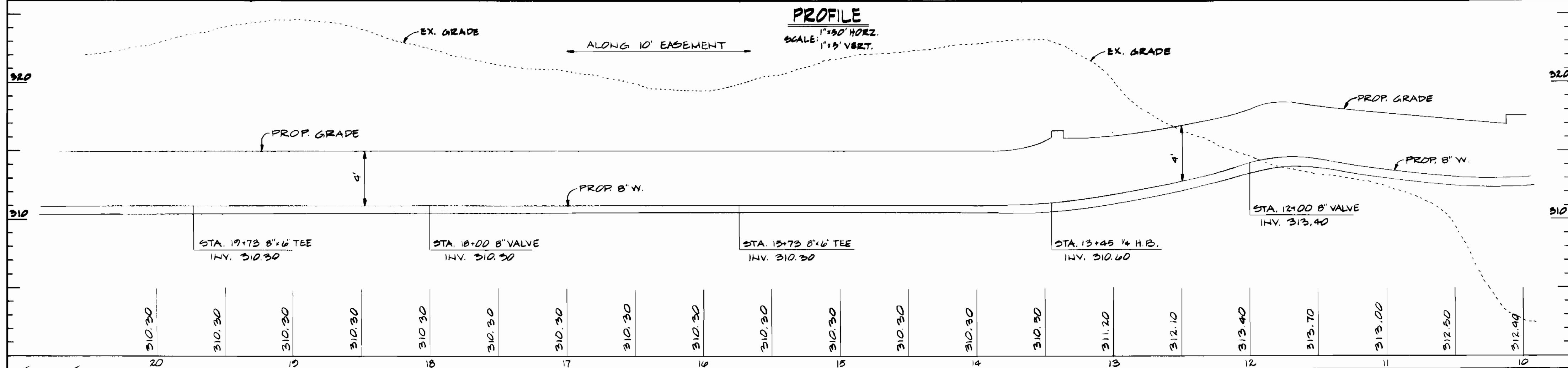
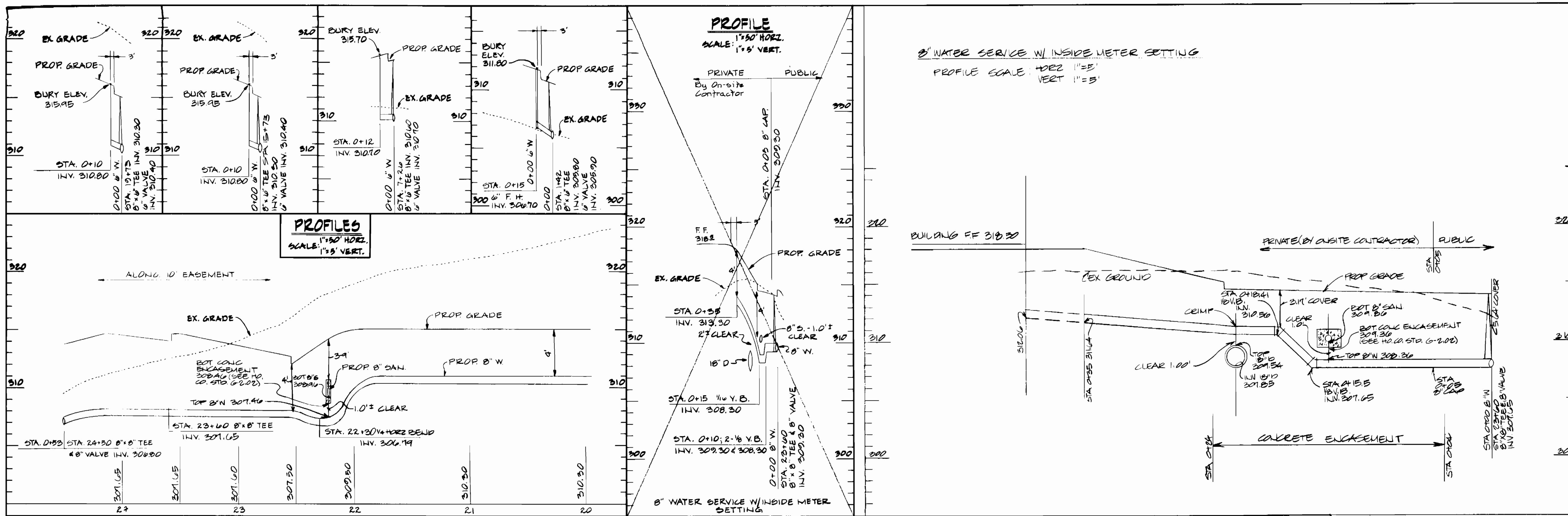
GEORGE WILLIAM STEPHENS, JR.
AND ASSOCIATES
303 ALLEGHENY AVE.
TOWSON, MARYLAND 21204
625-0120

DES: E.W.R.			
DRN: D.R.R.			
CHK: T.C.			
DATE: 8/10/84	BY: NO.	REVISION	DATE

PLAN AND PROFILE FOR PROPOSED WATER MAIN
CONTRACT NO: 24-1209-D
600' SCALE MAP NO. 42 BLOCK NO.

GUILFORD INDUSTRIAL PARK
PARCEL E-2 SECTION 2 AREA 3
COLUMBIA
HOWARD COUNTY, MARYLAND
AUGUST 10, 1984

SCALE AS SHOWN
SHEET 1 OF 2



Sediment Control Measures for This Contract Will Be Implemented in Accordance With Article 15 of The Standard Specifications & The Approved Sediment Control Plan For This Site, S.D.P. 84-221c

REVIEWED FOR HOWARD SOIL CONSERVATION DISTRICT AND MEETS TECHNICAL REQUIREMENTS

M.M. S. [Signature] 9-28-84
 SIGNATURE DATE
 U.S. SOIL CONSERVATION SERVICE

This Development Plan is approved for Soil Erosion and Sediment Control by the Howard County Soil Conservation District

APPROVED: *Stephen L. Fisher [Signature]* 9-28-84
 Howard County Soil Conservation District DATE

DEPARTMENT OF PUBLIC WORKS
 HOWARD COUNTY, MARYLAND

Robert M. Bunker [Signature] 9-28-84
 DIRECTOR OF PUBLIC WORKS DATE

William B. [Signature] 9-28-84
 CHIEF, BUREAU OF ENGINEERING DATE

William B. [Signature] 9-28-84
 Chief, Land Development Division DATE

GEORGE WILLIAM STEPHENS, JR.
 AND ASSOCIATES

303 ALLEGHENY AVENUE
 TOWSON, MARYLAND 21204
 823-0120

DES: R.W.R.	CAH	REVIEWED CALC ENCASEMENT FROM 8" W/ APPROVED CALC ENCASEMENT TO 8" W/ WATER SERVICE W/ INSIDE METER SETTING 18" H.B. VALVE STA 22+40 TO STA 22+60	4/10/84
DRN: D.R.R.	CAH	REVIEWED PROFILE FOR 8" WATER SERVICE W/ INSIDE METER SETTING 18" H.B. VALVE STA 22+40 TO STA 22+60	4/10/84
CHK: T.C.	CAH	REVIEWED PLAN FOR 8" WATER SERVICE W/ INSIDE METER SETTING 18" H.B. VALVE STA 22+40 TO STA 22+60	4/10/84
DATE: 8-10-84	BY: NO.	REVISION	DATE

PLAN AND PROFILE FOR PROPOSED WATER MAIN
 CONTRACT NO: 24-1200-D
 600' SCALE MAP NO. 42 BLOCK NO.

GUILFORD INDUSTRIAL PARK
 PARCEL E-2 SECTION 2 AREA 3
 COLUMBIA
 HOWARD COUNTY, MARYLAND
 AUGUST 10, 1984

SCALE AS SHOWN
 SHEET 2 OF 2