

GENERAL NOTES

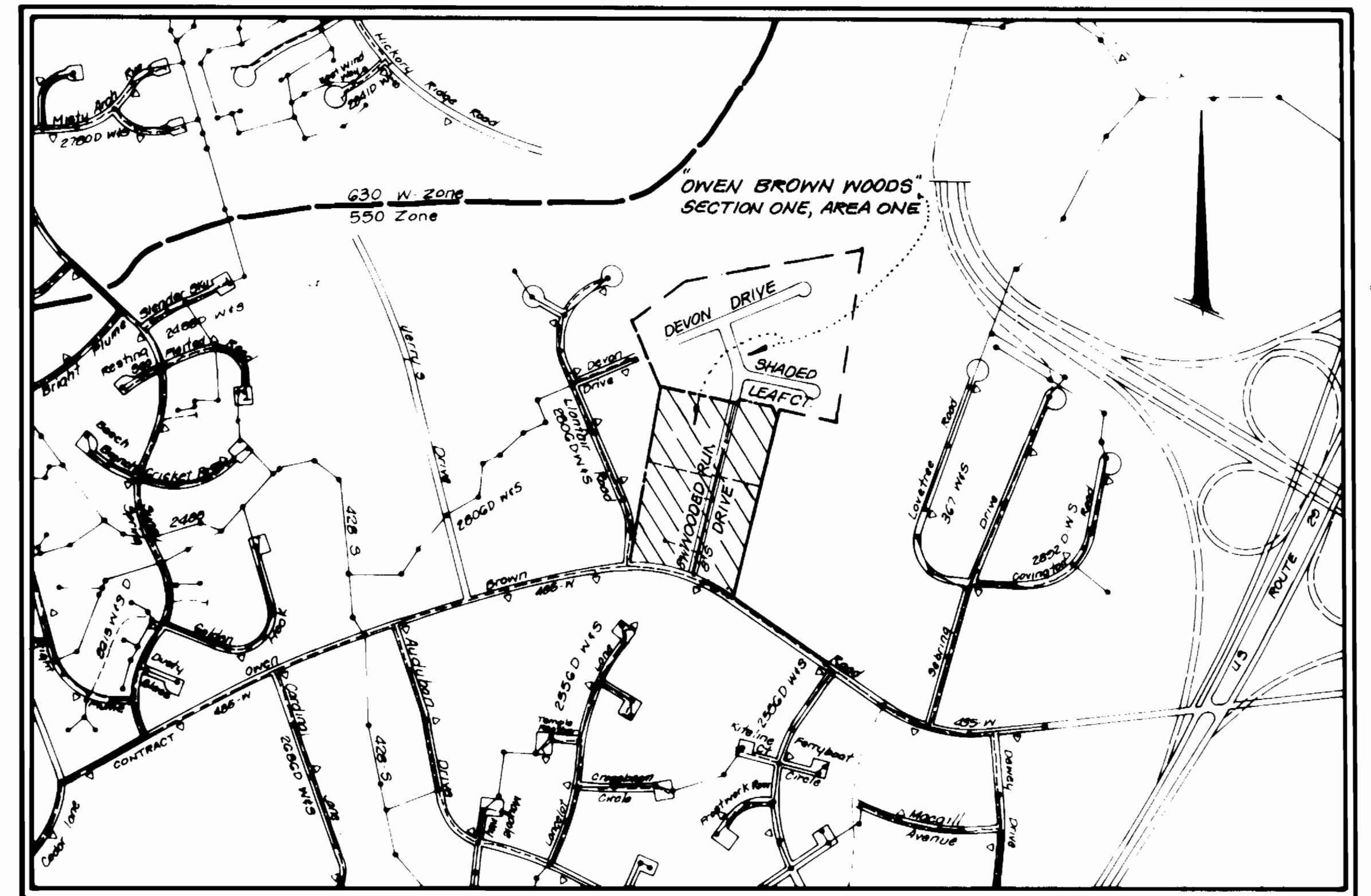
1. Approximate location of existing mains are shown. The contractor shall take all necessary precautions to protect existing mains and services and maintain uninterrupted supply. Any damage incurred shall be repaired immediately to the satisfaction of the Engineer at the Contractor's expense.
2. All horizontal controls are based on Maryland State Coordinates.
3. All vertical controls are based on U.S.C.S. data.
4. All pipe elevations shown are invert elevations.
5. Clear all utilities by a minimum of 6". Clear all poles by 2'-0" minimum or tunnel as required. The owner has contacted the utility companies and has made arrangements for bracing of poles as shown on the drawings. In the event the contractor's work requires the bracing of additional poles, any cost incurred by the owner for the bracing of additional poles or damage shall be deducted from money owed the contractor. The contractor shall coordinate with the utility companies to schedule the bracing of the poles.
6. For details not shown on the drawings, and for materials and construction methods, use Howard County Design Manual, Volume IV, Standard Specifications and Details for Construction. The contractor shall have a copy of Volume IV on the job.
7. Where test pits have been made on existing utilities, they are noted by the symbol \odot at the location of the test pit. A note or notes containing the results of the test pit or pits is included on the drawings. Existing utilities in the vicinity of the proposed work for which test pits have not been dug shall be located by the contractor two weeks in advance of construction operations at his own expense.
8. Contractor shall notify the following utilities or agencies at least five working days before starting work shown on these plans:
 - State Highway Administration - 531-5533
 - Baltimore Gas & Electric Co. - Contractor Services 561-2665
 - Baltimore Gas & Electric Co. Under Ground Damage Control - 234-5621
 - Baltimore Gas & Electric Co. Trouble Shooting - 298-9013
 - Wise Utility - 1-559-0100
 - Colonial Pipeline Co. - 794-1190
 - Bureau of Utilities, Howard County Department of Public Works - 492-2366
9. Trees and shrubs are to be protected from damage to maximum extent. Trees and shrubs located within the construction strip are not to be removed or damaged by the contractor.
10. Contractor shall remove trees, stumps and roots along line of excavation. Payment for such removal shall be included in the unit price bid for construction of the main.
11. No work shall commence prior to approval of Plan F-84-34 and installation of the sediment controls specified therein.
12. Water resources permit required for this project.

WATER NOTES

1. All water mains to be D.I.P. unless otherwise noted.
2. Tops of all water mains to have a minimum of 3'-1/2' cover unless otherwise noted.
3. Valves adjacent to tees shall be strapped to tees.
4. All fittings shall be buttressed or anchored with concrete in accordance with the Standard Details unless otherwise provided for on the drawings.
5. Fire hydrants shall be set to the bury line elevations shown on the drawings. All fire hydrants shall be strapped and buttressed with concrete in accordance with Standard Details. Soil around the fire hydrant shall be compacted in accordance with Section 1003 the Standard Specifications.
6. The contractor shall not operate any water main valves on the existing water system.
7. All water connections shall be for an inside meter setting.
8. For all copper water house connections utilize flared type fittings only.

SEWER NOTES

1. All sewer mains shall be C.S.P., R.C.S.P., V.C.F.P., A.C.P. Class 2400 or P.V.C. unless otherwise noted.
2. The contractor shall provide a joint in all sewer mains within 2'-0" of exterior manhole wall.
3. All manholes shall be 4'-0" inside diameter unless otherwise noted.
4. Manholes shown with 1" and 1 1/2" diam. are brick manholes only.
5. Manholes designated w.l. in plan and profile shall have watertight frame and covers, Standard Detail 65592, where watertight manhole frame and cover is used, set top of frame 1'-6" above finished grade unless otherwise noted on the drawings.
6. House(s) with the symbol "L.N.C." indicates that cellar cannot be served.



WATER & SEWER CODE FOR COUNTY USE.
 WATER NO. E-28
 SEWER NO. 5324400

VICINITY MAP

SCALE = 1" = 600'

TYPE OF BUILDINGS *Single Family*
 NUMBER OF LOTS: 23
 NUMBER OF WHC: 23
 NUMBER OF SHC: 23
 DRAINAGE AREA *Little Patuxent*

"OWEN BROWN WOODS"
 Cont. No. 24-1285-D
 Water & Sewer
 Howard County, Md.
 Dept. of Public Works.

ITEM	QUANTITIES		MATERIAL SUPPLIER
	EST.	AS BUILT	
8" Sanitary Sewer	1024 LF	1018 LF	BELAIR RD SUPPLY CO. INC.
8" Water	704 LF	712 LF	U.S. PIPE & FOUNDRY CO.
3/4" W.H.C.	137 LF	204 LF	MUNICIPAL CONTRACTORS SALES INC.
6" SHC	378 LF	417 LF	BELAIR RD SUPPLY CO. INC.
Sewer MH	5 Ea.	5 Ea.	ATLANTIC PRECAST CONCRETE CO.
Fire Hydrant	2 Ea.	2 Ea.	W.F. WILSON & SONS, INC.
1" W.H.C.	210 LF	161 LF	MUNICIPAL CONTRACTORS SALES INC.
16" x 8" TS & V	1 Ea.	1 Ea.	" " " "
6" Fire Hydrant Valve	2 Ea.	2 Ea.	" " " "
8" VALVE	1 Ea.	1 Ea.	" " " "
8" PLUG	1 Ea.	1 Ea.	U.S. PIPE & FOUNDRY CO.

BENCH MARKS

BM'A = Nail in utility Pole #48720
 Elevation 396.59
 BM'B = cut in rim of sewer MH
 Elevation 390.53

Sediment Control measures for this contract will be implemented in accordance with the provisions of these specifications and also as shown on the grading and sediment control Plan F8407 reviewed for Howard County Soil Conservation District and meets technical requirements.

James M. Holman 3/23/85
 U.S. SOIL CONSERVATION SERVICE DATE

This development is approved for Erosion and Sediment Control by the Howard Soil Conservation District.

Approved: *Stephen A. Fisher* 3/23/85
 HOWARD SOIL CONSERVATION DISTRICT DATE

DEVELOPMENT CONSULTANTS GROUP, INC.
 17904 Georgia Avenue
 Suite 102 Olney Md 20832
 301 942 4570

DEPARTMENT OF PUBLIC WORKS
 HOWARD COUNTY MARYLAND
 Director of Public Works Date 4-4-85
 Chief, Bureau of Engineering Date 4-3-85
 Chief Land Development Div DATE Robert M. Bauman 3-1-85
 CHIEF, BUREAU OF UTILITIES DATE

CONTRACT NO. 24-1285-D

PLAN & PROFILE WATER & SEWER FACILITIES

OWEN BROWN WOODS
 Section One, Area One
 Lots 1 thru 26
 Tax Map 36, Parcel 113
 5th Election District
 Howard County, Maryland.

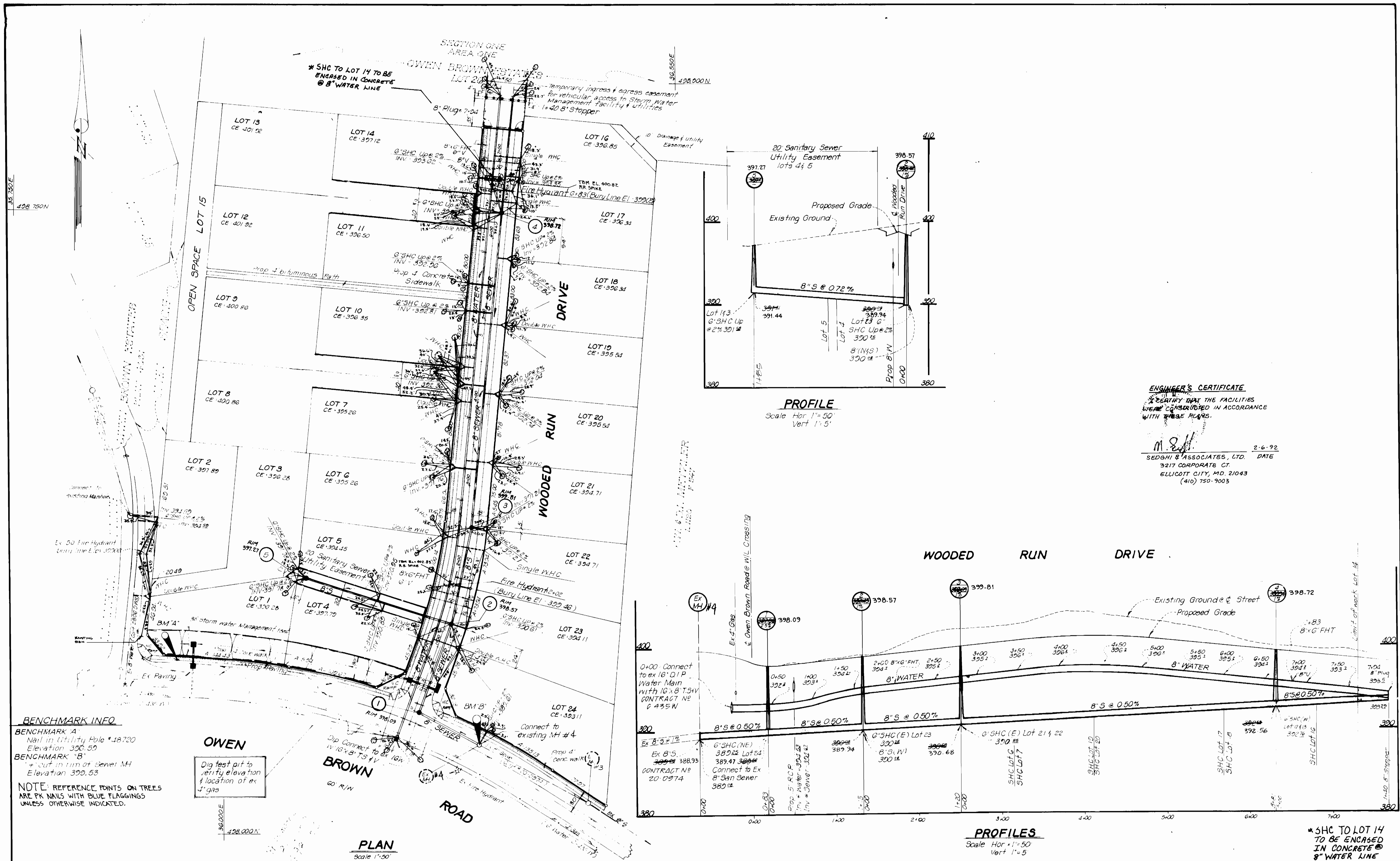
DRAWING NO. 1 OF 2

CONTRACT NO. 24-1285-D

SCALES
 PLAN As Shown
 PROFILE Horizontal As Vertical Shown

SEAL
 STATE OF MARYLAND
 PROFESSIONAL ENGINEER
 Reg No. 12114

DATE March 13, 1985 AS-BUILT



BENCHMARK INFO

BENCHMARK "A"
Nail in Utility Pole #48720
Elevation 399.59

BENCHMARK "B"
+ cut in rim of Sewer MH
Elevation 399.53

NOTE: REFERENCE POINTS ON TREES ARE PK NAILS WITH BLUE FLAGGING UNLESS OTHERWISE INDICATED.

OWEN

Dig test pit to verify elevation & location of ex 4" gas

PLAN
Scale 1"=50'

PROFILE
Scale Hor 1"=50'
Vert 1"=5'

PROFILES
Scale Hor 1"=50'
Vert 1"=5'

ENGINEER'S CERTIFICATE
I CERTIFY THAT THE FACILITIES WERE CONSIDERED IN ACCORDANCE WITH THESE PLANS.

M. Sedghi
2-6-92 DATE
SEDGHI & ASSOCIATES, LTD.
3217 CORPORATE CT.
ELLICOTT CITY, MD. 21043
(410) 750-9003

*SHC TO LOT 14 TO BE ENCASED IN CONCRETE @ 8" WATER LINE

- 3-
- 2-
- 1- ADD CONC. ENCASEMENT TO SHC. LOT 14 (State Health Dept. Req'd.) 5-16-85

 <p>DEVELOPMENT CONSULTANTS GROUP INC. 1464 Georgia Avenue Suite 101, Orlow, Md. 20854 (301) 451-1111</p>	<p>DEPARTMENT OF PUBLIC WORKS HOWARD COUNTY MARYLAND Director of Public Works Date 3-4-85</p> <p>Chief Bureau of Engineering Date 3-1-85</p> <p>Chief Land Development Div Date 3-1-85</p>	<p>CONTRACT NO. 24-1285-D</p>	<p>OWEN BROWN WOODS Section One, Area One Lots 1 thru 24 Tax Map 36, Parcel 113 5th Election District Howard County, Maryland</p>	<p>DRAWING NO. 2 OF 2</p>	<p>SCALES PLAN 1"=50' PROFILE Horizontal 1"=50' Vertical 1"=5'</p>	

DCG # 112-01