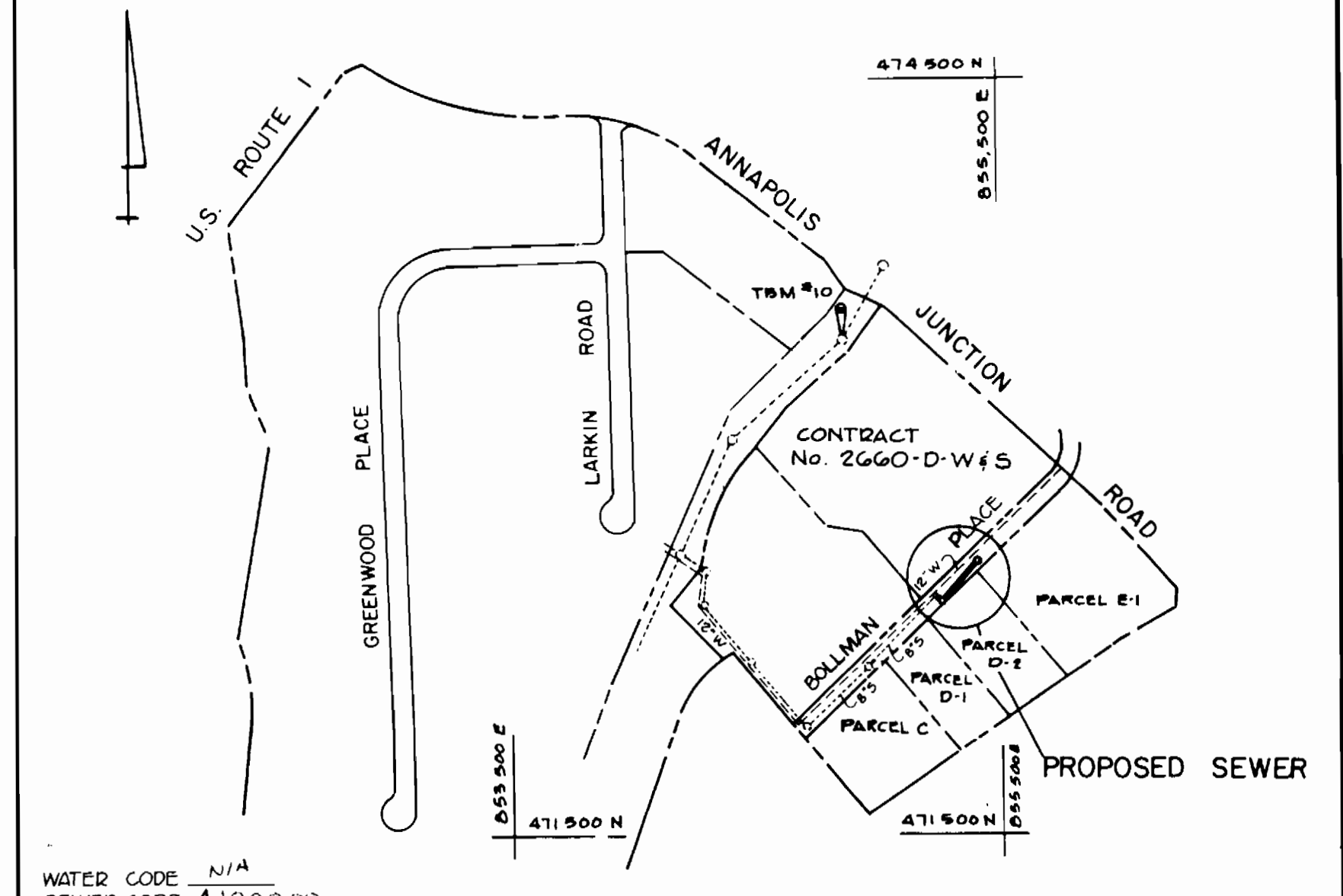
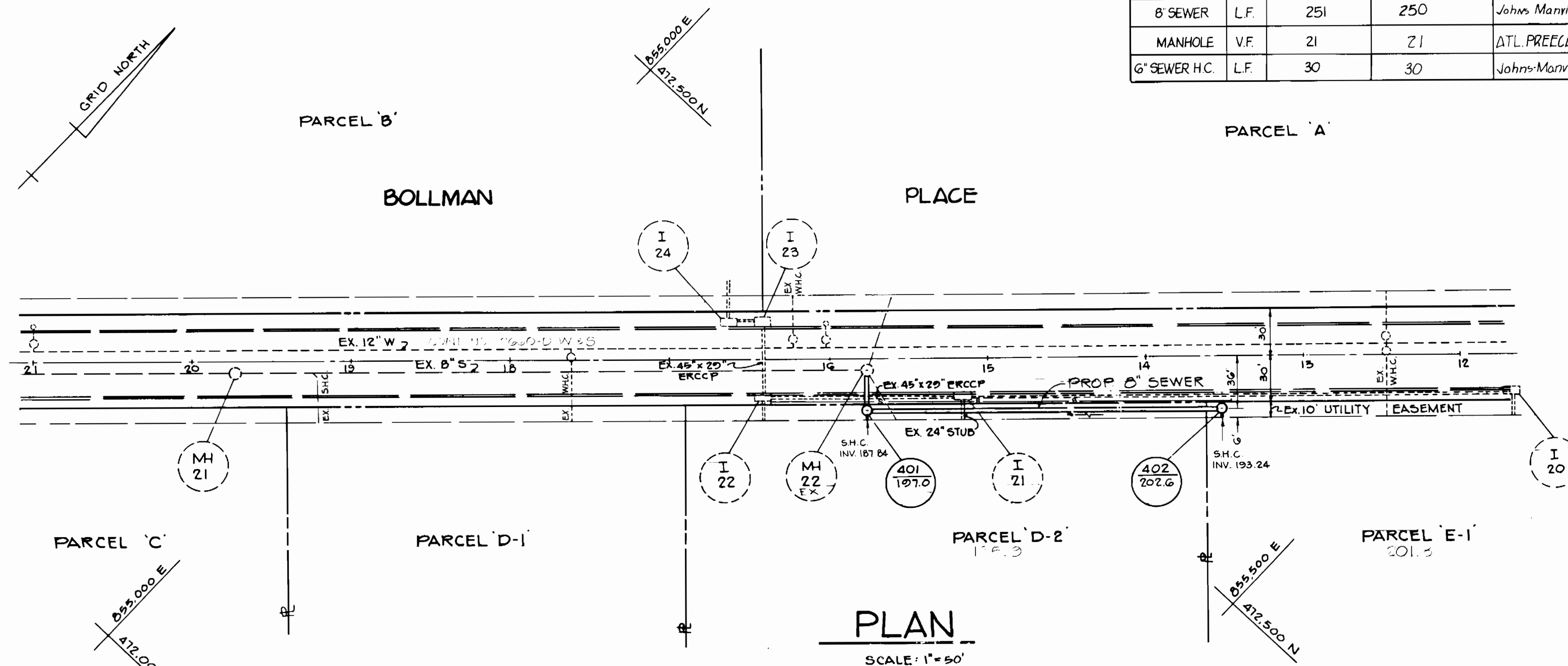


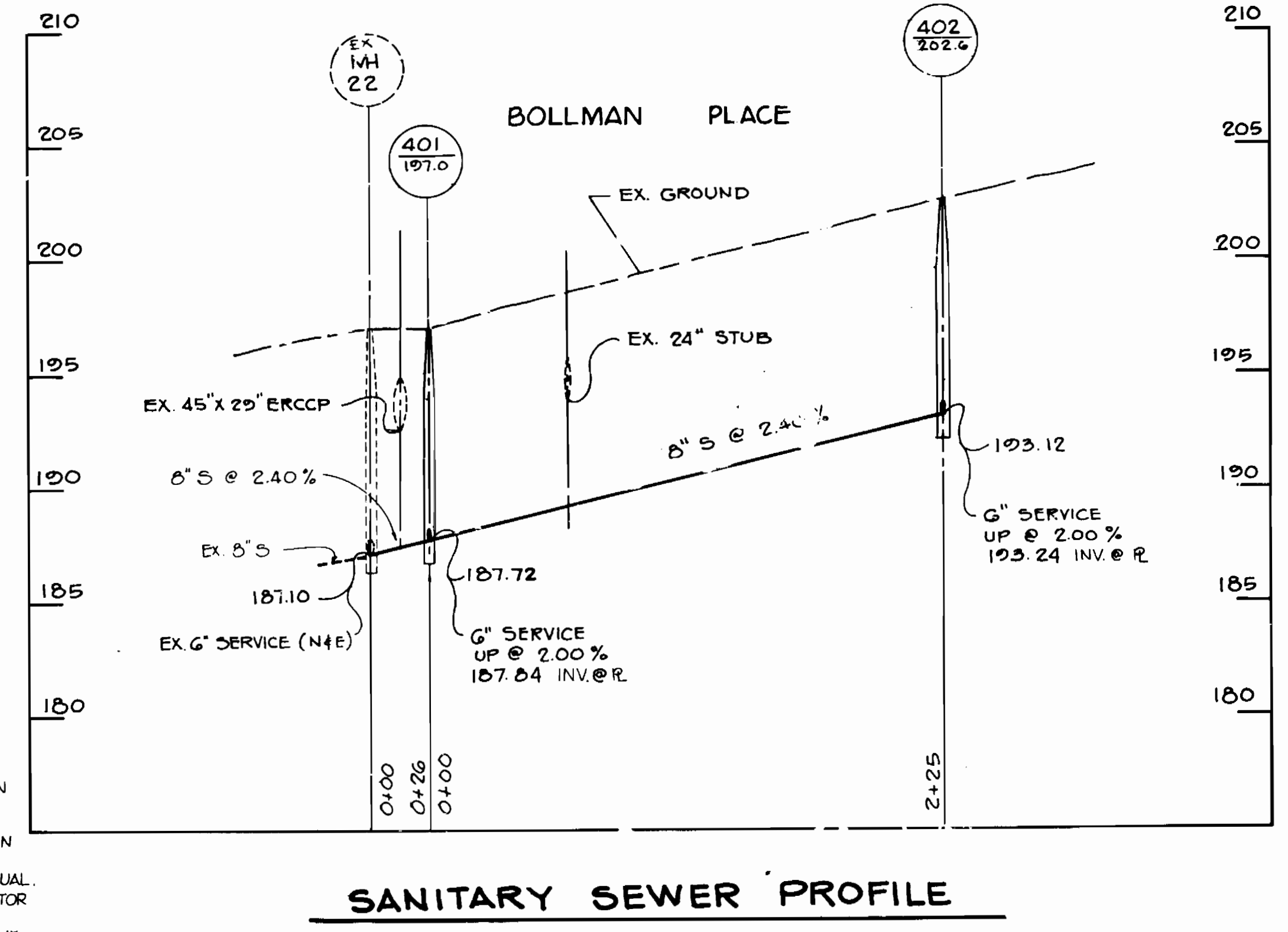
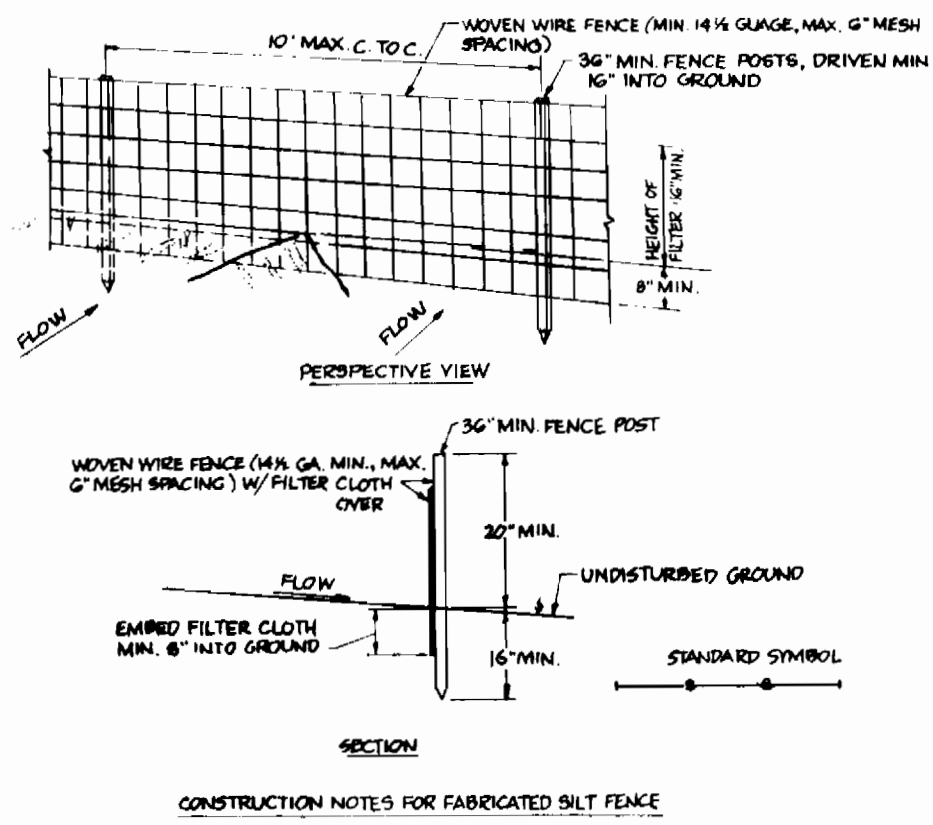
QUANTITIES				
ITEM	UNIT	ESTIMATED	AS-BUILT	MATERIAL/SUPPLIER
8" SEWER	L.F.	251	250	Johns Manville Corp.
MANHOLE	V.F.	21	21	ATL. PRECAST Conc.
6" SEWER H.C.	L.F.	30	30	Johns-Manville Corp.



TYPE OF BUILDING: INDUSTRIAL
 NO. OF LOTS: 2
 NO. OF WATER HOUSE CONN.: N/A
 NO. OF SEWER HOUSE CONN.: 2
 DRAINAGE AREA: LITTLE PATUXENT

VICINITY MAP
 SCALE: 1" = 600'

- GENERAL NOTES
- APPROXIMATE LOCATION OF EXISTING MAINS ARE SHOWN. THE CONTRACTOR SHALL TAKE ALL NECESSARY PRECAUTIONS TO PROTECT EXISTING MAINS AND SERVICES AND MAINTAIN UNINTERRUPTED SUPPLY. ANY DAMAGE INCURRED SHALL BE REPAIRED IMMEDIATELY TO THE SATISFACTION OF THE ENGINEER AT THE CONTRACTOR'S EXPENSE.
 - ALL HORIZONTAL CONTROLS ARE BASED ON MARYLAND STATE COORDINATES.
 - ALL VERTICAL CONTROLS ARE BASED ON U.S.G.S. DATA.
 - ALL PIPE ELEVATIONS SHOWN ARE INVERT ELEVATIONS.
 - CLEAR ALL UTILITIES BY A MINIMUM OF 6". CLEAR ALL POLES BY 2'-0" MINIMUM OR TUNNEL AS REQUIRED. THE OWNER HAS CONTACTED THE UTILITIES COMPANIES AND HAS MADE ARRANGEMENTS FOR BRACING OF POLES AS SHOWN ON THE DRAWINGS. IN THE EVENT THE CONTRACTOR'S WORK REQUIRES THE BRACING OF ADDITIONAL POLES, ANY COST INCURRED BY THE OWNER FOR THE BRACING OF ADDITIONAL POLES OR DAMAGES SHALL BE DEDUCTED FROM MONEY OWED THE CONTRACTOR. THE CONTRACTOR SHALL COORDINATE WITH THE UTILITY COMPANIES TO SCHEDULE THE BRACING OF THE POLES.
 - FOR DETAILS NOT SHOWN ON THE DRAWINGS, AND FOR MATERIALS AND CONSTRUCTION METHODS, USE HOWARD COUNTY DESIGN MANUAL, VOLUME IV, STANDARD SPECIFICATIONS AND DETAILS FOR CONSTRUCTION. THE CONTRACTOR SHALL HAVE A COPY OF VOLUME IV ON THE JOB.
 - WHERE TEST PITS HAVE BEEN MADE ON EXISTING UTILITIES, THEY ARE NOTED BY THE SYMBOL AT THE LOCATION OF THE TEST PIT. A NOTE OR NOTES CONTAINING THE RESULTS OF THE TEST PIT OR PITS IS INCLUDED ON THE DRAWINGS. EXISTING UTILITIES IN THE VICINITY OF THE PROPOSED WORK FOR WHICH TEST PITS HAVE NOT BEEN DUG SHALL BE LOCATED BY THE CONTRACTOR TWO WEEKS IN ADVANCE OF CONSTRUCTION OPERATIONS AT HIS OWN EXPENSE.
 - CONTRACTOR SHALL NOTIFY THE FOLLOWING UTILITIES OR AGENCIES AT LEAST FIVE WORKING DAYS BEFORE STARTING WORK SHOWN ON THESE PLANS:
 STATE HIGHWAY ADMINISTRATION - 531-5533
 BALTIMORE GAS & ELECTRIC CO. - CONTRACTOR SERVICES 561-2585
 BALTIMORE GAS & ELECTRIC CO. UNDER GROUND DAMAGE CONTROL - 234-5621
 BALTIMORE GAS & ELECTRIC CO. TROUBLE SHOOTING - 298-9013
 MISS UTILITY - 1-559-0100
 COLONIAL PIPELINE CO. - 795-1390
 BUREAU OF UTILITIES, HOWARD COUNTY DEPARTMENT OF PUBLIC WORKS - 992-2366
 - TREES AND SHRUBS ARE TO BE PROTECTED FROM DAMAGE TO MAXIMUM EXTENT. TREES AND SHRUBS LOCATED WITHIN THE CONSTRUCTION STRIP ARE NOT TO BE REMOVED OR DAMAGED BY THE CONTRACTOR.
 - CONTRACTOR SHALL REMOVE TREES, STUMPS AND ROOTS ALONG LINE OF EXCAVATION. PAYMENT FOR SUCH REMOVAL SHALL BE INCLUDED IN THE UNIT PRICE BID FOR CONSTRUCTION OF THE MAIN.
 - ALL SEWER MAINS SHALL BE C.S.P.X., R.C.S.P., V.C.P.X., A.C.P. CLASS 2400 OR P.V.C. UNLESS OTHERWISE NOTED.
 - THE CONTRACTOR SHALL PROVIDE A JOINT IN ALL SEWER MAINS WITHIN 2'-0" OF EXTERIOR MANHOLE WALL.
 - ALL MANHOLES SHALL BE 4'-0" INSIDE DIAMETER UNLESS OTHERWISE NOTED.
 - MANHOLES SHOWN WITH 12" AND 16" WALLS ARE BRICK MANHOLES ONLY.
 - MANHOLES DESIGNATED W.T. IN PLAN AND PROFILE SHALL HAVE WATERTIGHT FRAME AND COVERS, STANDARD DETAIL S1.45. WHERE WATERTIGHT MANHOLE FRAME AND COVER IS USED, SET TOP OF FRAME 1'-6" ABOVE FINISHED GRADE UNLESS OTHERWISE NOTED ON THE DRAWINGS.
 - HOUSE(S) WITH THE SYMBOL "C.N.S." INDICATES THAT CELLAR CANNOT BE SERVED.



Sediment Control Measures will be implemented in accordance with Article 15 of the specifications & with F-24-221

REVIEWED FOR HOWARD SOIL CONSERVATION DISTRICT AND MEETS TECHNICAL REQUIREMENT
 Signature: *James M. Nelson* Date: 9-26-84
 U.S. Soil Conservation Service

THIS DEVELOPMENT PLAN IS APPROVED FOR SOIL EROSION AND SEDIMENT CONTROL BY THE HOWARD COUNTY CONSERVATION DISTRICT.

APPROVED: *Stephen L. Spauld* 9/26/84
 Howard Soil Conservation District

- SEQUENCE OF CONSTRUCTION
- OBTAIN GRADING PERMIT
 - INSTALL SILT FENCE AS SHOWN ON PLAN.
 - CONSTRUCT SEWER EXTENSION AS SHOWN ON PLAN.
 - AFTER CONSTRUCTION AND BACKFILLING IS COMPLETE, STABILIZE ALL DISTURBED AREAS IN ACCORDANCE WITH THE REQUIREMENTS OF ARTICLE 15 OF THE HOWARD CO. DESIGN MANUAL.
 - UPON APPROVAL OF THE HOWARD CO. INSPECTOR REMOVE THE SILT FENCE AND STABILIZE PER THE PERMANENT SEEDING NOTES OF ARTICLE 15.

DEPARTMENT OF PUBLIC WORKS
 HOWARD COUNTY, MARYLAND

Shirley F. Neamy 9-28-84
 DIRECTOR OF PUBLIC WORKS DATE

Robert M. Bergeron 9-18-84
 CHIEF, BUREAU OF UTILITIES DATE

Richard A. ... 9/26/84
 CHIEF, BUREAU OF ENGINEERING DATE

William ... 9-27-84
 CHIEF, LAND DEVELOPMENT DIVISION DATE

CENTURY ENGINEERING, INC.
 CONSULTING ENGINEERS PLANNERS
 32 WEST RD
 TOWSON, MARYLAND 21204

Gregory R. Klar DATE

DES: G.R.K.			
DRN: G.B.Z.			
CHK: G.R.K.			
DATE:	BY:	NO:	REVISION:

SANITARY SEWER
 PLAN AND PROFILE

600' SCALE MAP NO. _____ BLOCK NO. _____

CORRIDOR INDUSTRIAL PARK
 SECTION 2
 PARCELS D-1, D-2 & E-1
 CONTRACT NO. 20-1283-D

6TH ELECTION DISTRICT HOWARD COUNTY MD.

SCALE AS SHOWN
 SHEET 1 OF 1