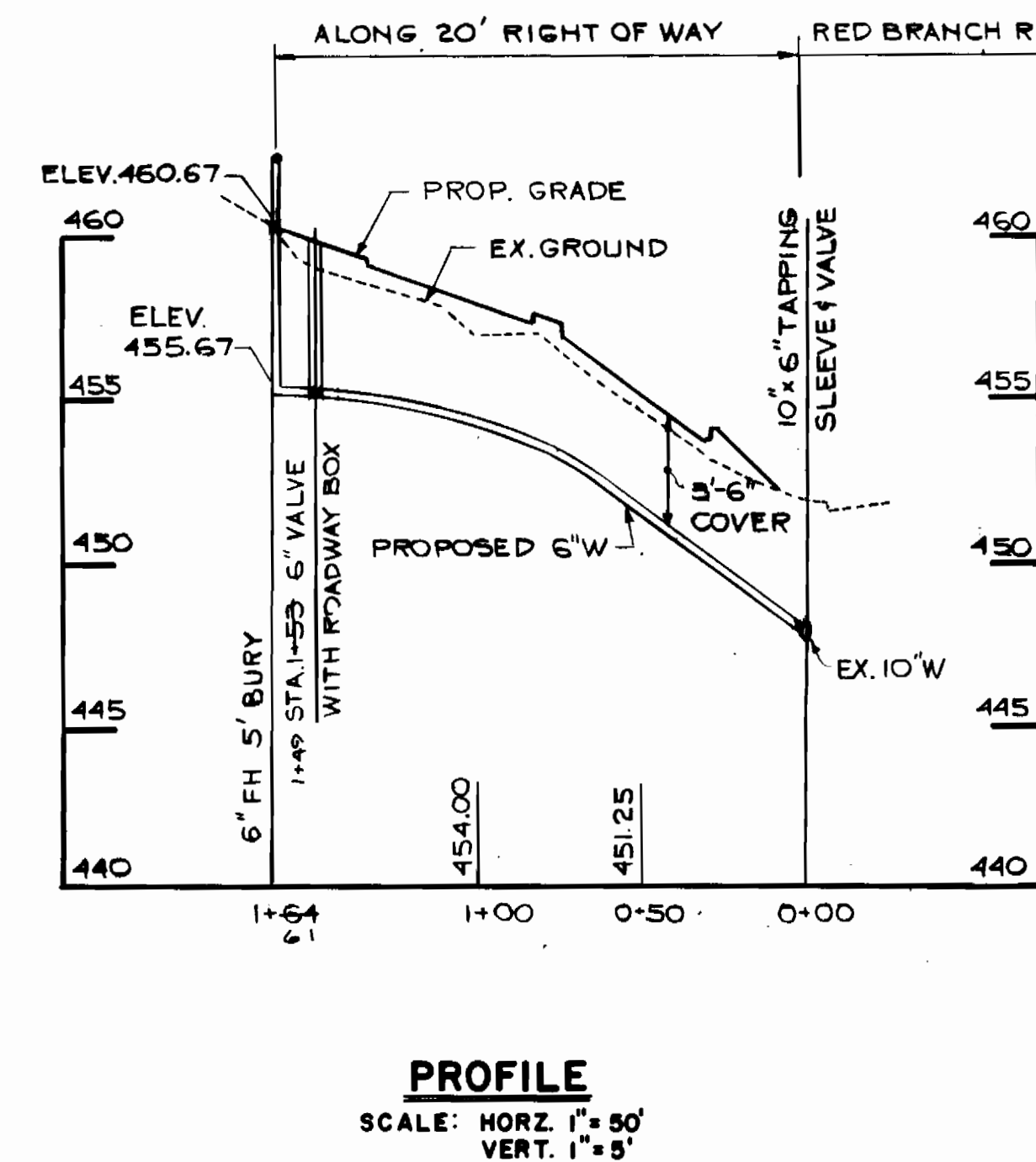
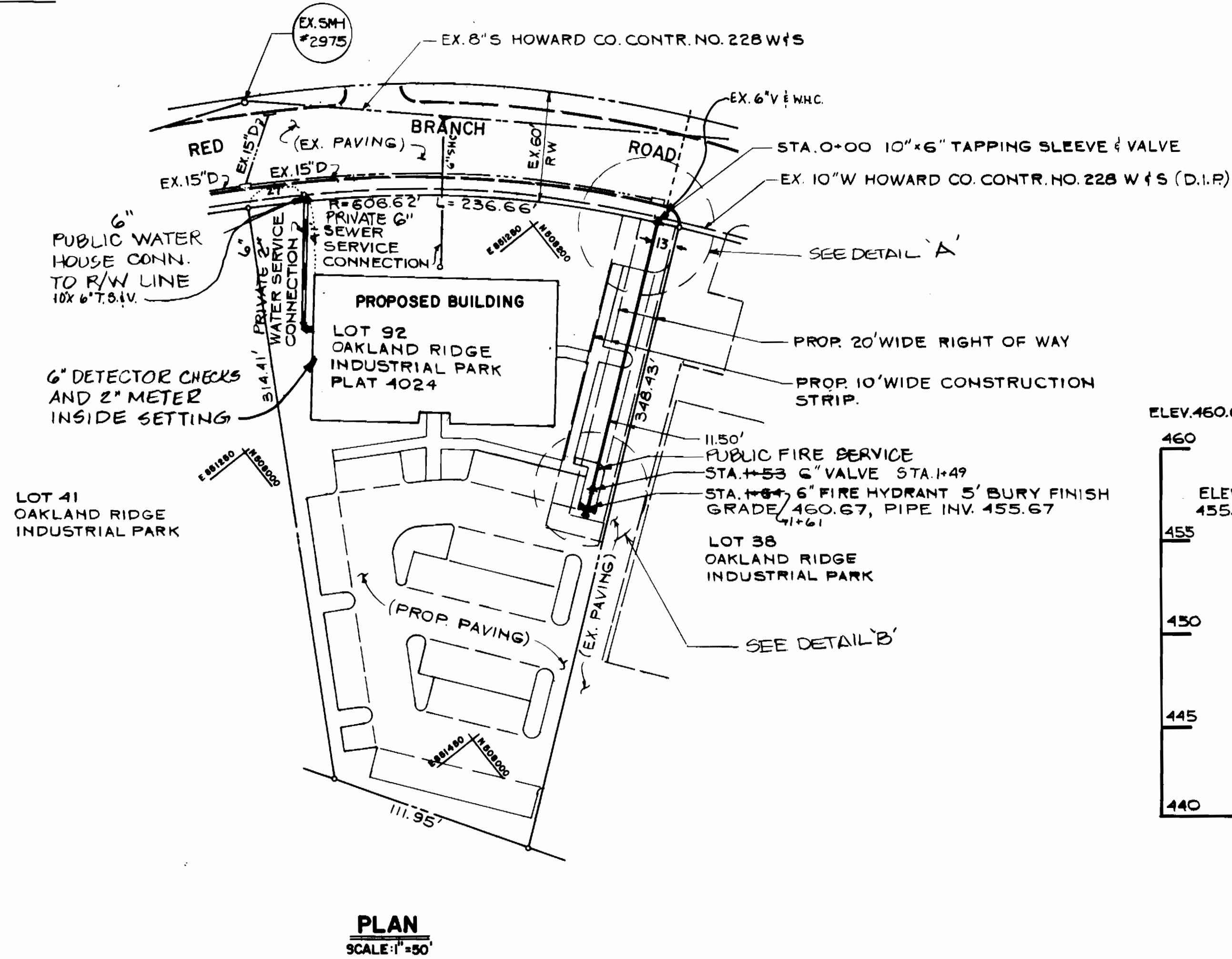


VICINITY MAP  
SCALE: 1"=600'

TYPE OF BUILDING : 2 STORY OFFICE  
 NUMBER OF LOTS : 1  
 NUMBER OF WHC : 1  
 NUMBER OF SHC : 1  
 DRAINAGE AREA : LITTLE PATUMAM

WATER & SEWER CODES  
 COUNTY US8  
 WATER NO.  
 SEWER NO.



GENERAL NOTES

- APPROXIMATE LOCATION OF EXISTING UTILITIES ARE SHOWN. THE CONTRACTOR SHALL TAKE ALL NECESSARY PRECAUTIONS TO PROTECT EXISTING UTILITIES AND SERVICES AND TO MAINTAIN UNINTERRUPTED SERVICE. ANY DAMAGE INCURRED DUE TO THE CONTRACTORS OPERATION SHALL BE REPAIRED IMMEDIATELY AT THE CONTRACTORS EXPENSE.
- ALL PIPE ELEVATIONS ARE INVERT ELEVATIONS.
- CONTRACTOR SHALL NOTIFY "MISS UTILITY" (559-0100) AT LEAST 3 DAYS PRIOR TO BEGINNING ANY CONSTRUCTION SHOWN HEREON.
- FOR ALL STANDARD DETAILS SEE STANDARDS BOUND IN SPECIFICATIONS.
- CLEAR ALL UTILITIES BY A MINIMUM OF 6". CLEAR ALL POLES BY A MINIMUM OF 2'-0" OR TUNNEL AS REQUIRED. ANY COSTS INCURRED BY THE CONTRACTOR FOR TUNNELING OR BRACING POLES SHALL BE INCLUDED IN THE UNIT PRICE BID FOR EXCAVATION.
- ALL WATER LINES TO HAVE A MINIMUM OF 3'-6" COVER. UNLESS OTHERWISE NOTED.
- BLOCK ALL FITTINGS WITH CONCRETE; STANDARDS BOUND IN SPECIFICATIONS
- BURY LINE ELEVATIONS ON FIRE HYDRANTS SHALL BE SET TO THE ELEVATIONS SHOWN ON THE DRAWINGS. SOIL AROUND HYDRANTS TO BE COMPACTED IN ACCORDANCE WITH SECTION 10.03 OF THE STANDARD SPECIFICATIONS.
- ALL FIRE HYDRANTS SHALL BE STRAPPED TO THE TEE AND SHALL BE BUTTRESSED WITH CONCRETE IN ACCORDANCE WITH THE STANDARD DETAILS.
- ALL HORIZONTAL CONTROLS ARE BASE ON MD STATE GRID
- ALL WATER MAINS SHALL BE D.I.P. UNLESS OTHERWISE NOTED.
- CONTRACTOR SHALL NOTIFY BALTIMORE GAS AND ELECTRIC CO. PRIOR TO ANY CONSTRUCTION IN THE VICINITY OF ANY GAS AND ELECTRIC FACILITIES BY CALLING 301-2585; 234-5621 AND 226-2013 FIVE (5) DAYS IN ADVANCE
- TREES ARE TO BE PROTECTED FROM DAMAGE TO THE MAXIMUM EXTENT. ALL TREES LOCATED WITHIN THE CONSTRUCTION AREA ARE NOT TO BE REMOVED OR DAMAGED BY THE CONTRACTOR.
- ALL VALVES SHALL BE STRAPPED TO TEES IN ACCORDANCE WITH STANDARD DETAILS.
- CONTRACTOR SHALL REMOVE TREES, STUMPS AND ROOTS ALONG LINE OF EXCAVATION AS DIRECTED BY THE ENGINEER. PAYMENT FOR SUCH REMOVAL SHALL BE INCLUDED IN THE UNIT PRICE BID FOR EXCAVATION AND BACKFILL FOR WATER MAINS.
- PLACE REGULATION "MEN WORKING" AND WARNING SIGNS AS REQUIRED TO COMPLY WITH MARYLAND STATE HIGHWAY ADMINISTRATION MANUAL OF TRAFFIC CONTROL FOR HIGHWAY CONSTRUCTION AND MAINTENANCE OPERATIONS.
- THE CONTRACTOR SHALL NOTIFY THE C&P TELEPHONE CO. PRIOR TO ANY CONSTRUCTION IN BALTIMORE. (725-9976) FIVE (5) DAYS IN ADVANCE
- SEDIMENT CONTROL SHALL BE ACCOMPLISHED IN ACCORDANCE WITH SITE DEVELOPMENT PLAN SDP-84-273-C.
- FOR MATERIALS AND CONSTRUCTION METHODS USE HOW. CO. STD. SPEC. & HOW. CO. DESIGN MANUAL, VOL II, THE CONTRACTOR SHALL HAVE A COPY OF VOL II @ THE JOB.
- CONTRACTOR SHALL LOCATE EX UTILITIES A MIN. OF TWO (2) WEEKS IN ADVANCE OF CONSTRUCTION OPERATIONS IN THE VICINITY OF PROP. UTILITIES @ HIS OWN EXPENSE
- NOTIFY AT LEAST FIVE (5) WORKING DAYS IN ADVANCE OF ANY CONSTRUCTION  
 M. S. H. A 531-5533  
 COLONIAL PIPELINE CO 795-1320  
 HOW CO. BUREAU OF UTILITY 992-2366
- ALL WATER HOUSE CONNECTION SHALL BE FOR AN INSIDE METER SETTING
- FOR ALL COPPER WATER CONN. UTILIZE FLARED TYPE FITTINGS ONLY

QUANTITIES				
NO.	ITEMS	PROP.	AS BUILT	MATERIALS/SUPPLIER
1	6" WATER	100 LF	161	DIP ATLANTIC STATES
2	10" x 6" TAP SLEEVE & VALVE	1 EA.	2	MULLER
3	6" F.H. VALVE	1 EA.	2	MEULLER
4	6" F.H.	1 EA.	1	MEULLER
5	2" WHC	10 LF	5 LF	D.I.P. ATLANTIC

24. ALL VERTICAL CONTROLS ARE BASED ON UGGS DATUM  
 25. CONTRACTOR SHALL NOT OPERATE ANY WATER MAIN VALVES ON EXISTING SYSTEM.

REVIEWED FOR HOWARD SOIL CONSERVATION DISTRICT AND METS TECHNICAL REQUIREMENT  
*[Signature]* 9-14-84  
 U.S. SOIL CONSERVATION SERVICE

THIS DEVELOPMENT PLAN IS APPROVED FOR SOIL EROSION AND SEDIMENT CONTROL BY THE HOWARD COUNTY CONSERVATION DISTRICT.  
 APPROVED: *[Signature]* 9/14/84  
 HOWARD S.C.D.

DEPARTMENT OF PUBLIC WORKS  
 HOWARD COUNTY, MARYLAND

*[Signature]* 9-25-84  
 DIRECTOR OF PUBLIC WORKS

*[Signature]* 9/21/84  
 CHIEF, BUREAU OF UTILITIES

*[Signature]* 9/24/84  
 CHIEF, LAND DEVELOPMENT DIVISION

HITNEY  
 AILEY  
 OX  
 AGNANI

CONSULTING ENGINEERS  
 Suite 311 Green Spring Station  
 2360 West Joppa Road  
 Lutherville, Maryland 21093  
 301-296-4200



DES: PD  
 DRN: GG  
 CHK: FEC  
 DATE: 6/22/84

1 Rev WHC to 6"  
 REVISION

PLAN OF WATER MAIN  
 CONTRACT NO. 24-1279-D  
 600' SCALE MAP NO. 30 BLOCK NO. 18

WATER MAIN EXTENSION  
 RED BRANCH ROAD  
 OAKLAND RIDGE INDUSTRIAL PARK  
 SECTION 2

ELECTION DISTRICT NO. 2  
 HOWARD CO. MD.

SCALE AS SHOWN  
 SHEET 1 OF 1