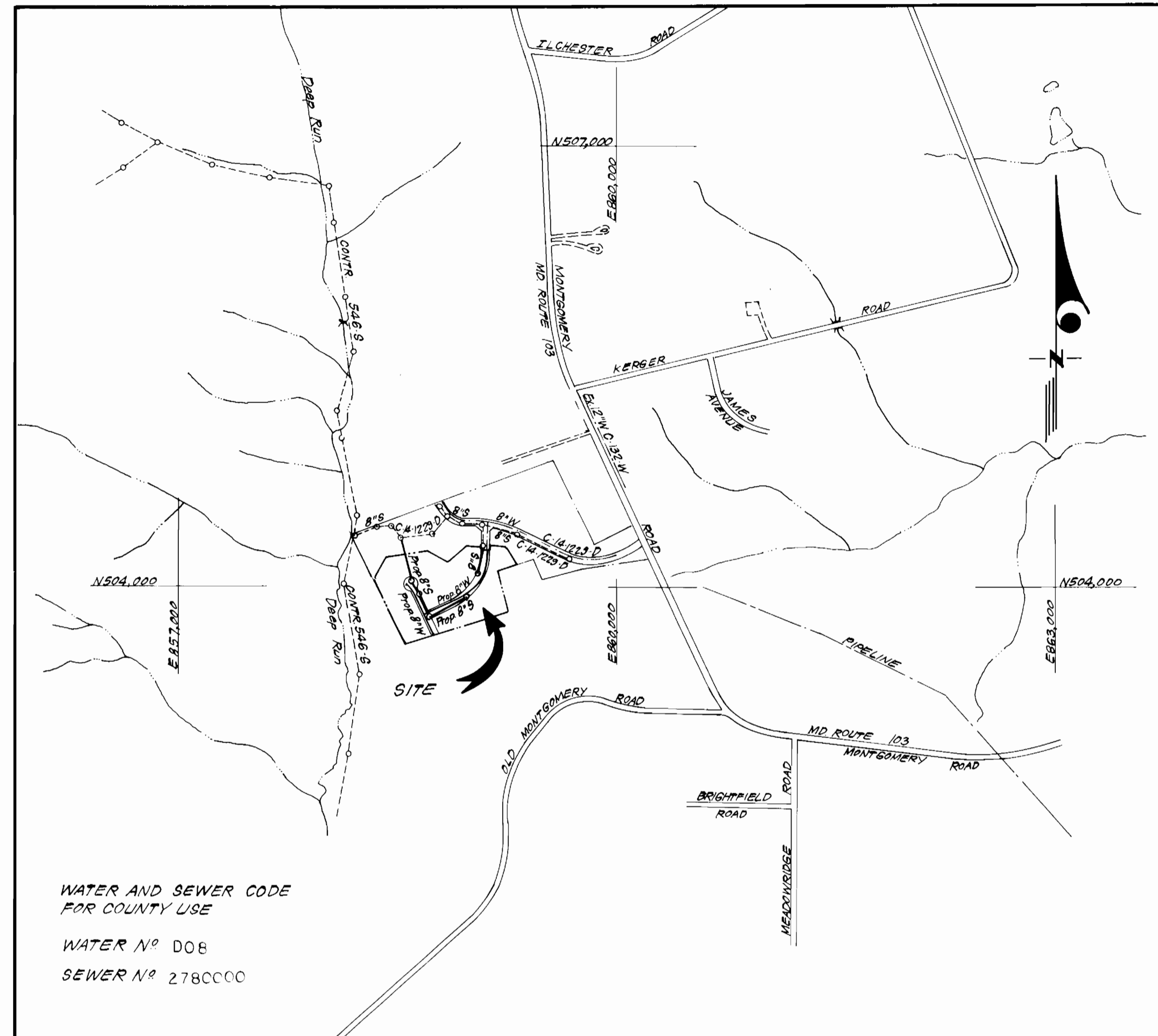


TYPE OF BUILDING	Single Family Detached
NUMBER OF LOTS	26
NUMBER OF SHC'S	26
NUMBER OF WHC'S	26
DRAINAGE AREA	PotapSCO



WATER AND SEWER CODE  
FOR COUNTY USE  
WATER N° D08  
SEWER N° 278CC00

VICINITY MAP

GENERAL NOTES

- Approximate location of existing mains are shown. The contractor shall take all necessary precautions to protect existing mains and services and maintain uninterrupted supply. Any damage incurred shall be repaired immediately to the satisfaction of the Inspector, at the contractor's expense.
- All horizontal controls are based on Maryland State Coordinates.
- All vertical controls are based on U.S.G.S. Datum.
- All pipe elevations shown are invert elevations.
- Clear all utilities by a minimum of 6" clear all poles by 2'-0" minimum or tunnel as required. Any cost incurred to the contractor for tunneling or bracing at poles shall be included in unit prices bid for excavation and backfill.
- For details not shown on the drawings use Howard County Standard Details.
- For materials and construction methods use Howard County Standard Specifications.
- Contractor shall locate existing utilities a minimum of two (2) weeks in advance of construction operations in the vicinity of proposed utilities at his own expense.
- Contractor shall notify the following utilities or agencies at least five (5) working days before starting work shown on these plans.  
 State Highway Administration - 531-5533  
 Baltimore Gas & Electric Company - Contractor Services - 561-2585  
 Baltimore Gas & Electric Company - Underground Damage Control - 234-5621  
 Baltimore Gas & Electric Company - Trouble Shooting - 298-9013  
 Miss Utility - 1-559-0100  
 Chesapeake & Potomac (C & P) Telephone Company - 725-9976  
 Colonial Pipeline Company - 795-1390  
 Bureau of Utilities Howard County - 992-2366
- Trees are to be protected from damage to maximum extent. Trees located within the construction strip are not to be removed or damaged by the contractor.
- Contractor shall remove trees, stumps, and roots along line of excavation as directed by the Inspector. Payment for such removal shall be included in the unit price bid for excavation and backfill.
- Place regulation "Men Working" and warning signs as required to comply with Maryland State Highway Administration Manual of Traffic Control for Highway Construction and Maintenance Operations.
- All water mains to be D.I.P. unless otherwise noted.
- Top of all water mains to have a minimum of 3-1/2' cover unless otherwise noted.
- Valves adjacent to tees shall be strapped to tees.
- Block all fittings with concrete.
- Bury line elevations on fire hydrants shall be set to the elevations shown on the drawings. All fire hydrants shall be strapped and buttressed with concrete in accordance with standard details. Soil around the fire hydrant to be compacted in accordance with Section 10.03 of the Standard Specifications.
- All water house connections shall be for an inside meter setting.
- The contractor shall not operate any water main valves on the existing system.
- All sewer mains shall be C.S.P.X., V.C.P.X., P.V.C., or A.C.P. Class 2400 unless otherwise noted.
- The contractor shall provide a joint in all sewer mains within 2'-0" of exterior manhole wall.
- All manholes shall be 4'-0" inside diameter, unless otherwise noted.
- Water main and water house connection lines must have a minimum of one foot separation from the sanitary sewer and sewer house connections as they cross. Except at crossings, water and sewer lines shall have a minimum horizontal separation of 10'.
- For all Copper Water House Connections, utilize flared type fittings only.

CONTRACT NO. 14-I270 - D  
HUNT COUNTRY ESTATES  
SECTION TWO  
HOWARD COUNTY, MARYLAND  
DEPARTMENT OF PUBLIC WORKS

Sediment Control Measures will be implemented in accordance with Article No. 15 of the Specifications & with Road Construction Plan F.84-199; Drawings 1 & 2 Sediment & Erosion Control.

REVIEWED FOR HOWARD SOIL CONSERVATION DISTRICT AND MEETS TECHNICAL REQUIREMENT.

*[Signature]* 10-23-84  
SIGNATURE DATE

U.S. SOIL CONSERVATION SERVICE

This Development Plan is approved for Soil Erosion and Sediment Control by the Howard Soil Conservation District.

APPROVED:  
*[Signature]* 10-23-84  
Howard S.C.D. DATE

ITEM	ESTM'D	AS-BUILT	MATERIAL / SUPPLIER
8" S	1105 LF	1084.0LF	MP Water & Sewer Supplies, Inc.
4" MH	5 EA	5 EA	Atlantic Precast Concrete Corp
6" W	243 LF	240.5 LF	United States Pipe & Foundry
8" W	883 LF	880.0 LF	" " " "
FH	2 EA	2 EA	" " " "
8" V	2 EA	2 EA	" " " "
6" SHC	523 LF	541.83 LF	MP Water & Sewer Supplies, Inc.
3/4" WHC	367 LF	479.40 LF	Municipal & Contractor Sales, Inc.
1" WHC	139 LF	170.90 LF	" " " "
1/4" Drain	2 EA	2 EA	" " " "

HUNT COUNTRY ESTATES  
SECTION TWO  
LOTS 28 THRU 53

DEPARTMENT OF PUBLIC WORKS  
HOWARD COUNTY, MARYLAND

*[Signature]* 10-23-84  
DIRECTOR OF PUBLIC WORKS DATE

*[Signature]* 10-23-84  
CHIEF, BUREAU OF ENGINEERING DATE

*[Signature]* 10-23-84  
CHIEF, BUREAU OF UTILITIES DATE

*[Signature]* 10-23-84  
CHIEF, LAND DEVELOPMENT DIV. DATE

**CFS** CLARK · FINEPROCK & SACKETT  
ENGINEERS · PLANNERS · SURVEYORS

11315 LOCKWOOD DRIVE SILVER SPRING, MARYLAND 20904  
(301) 593-3400



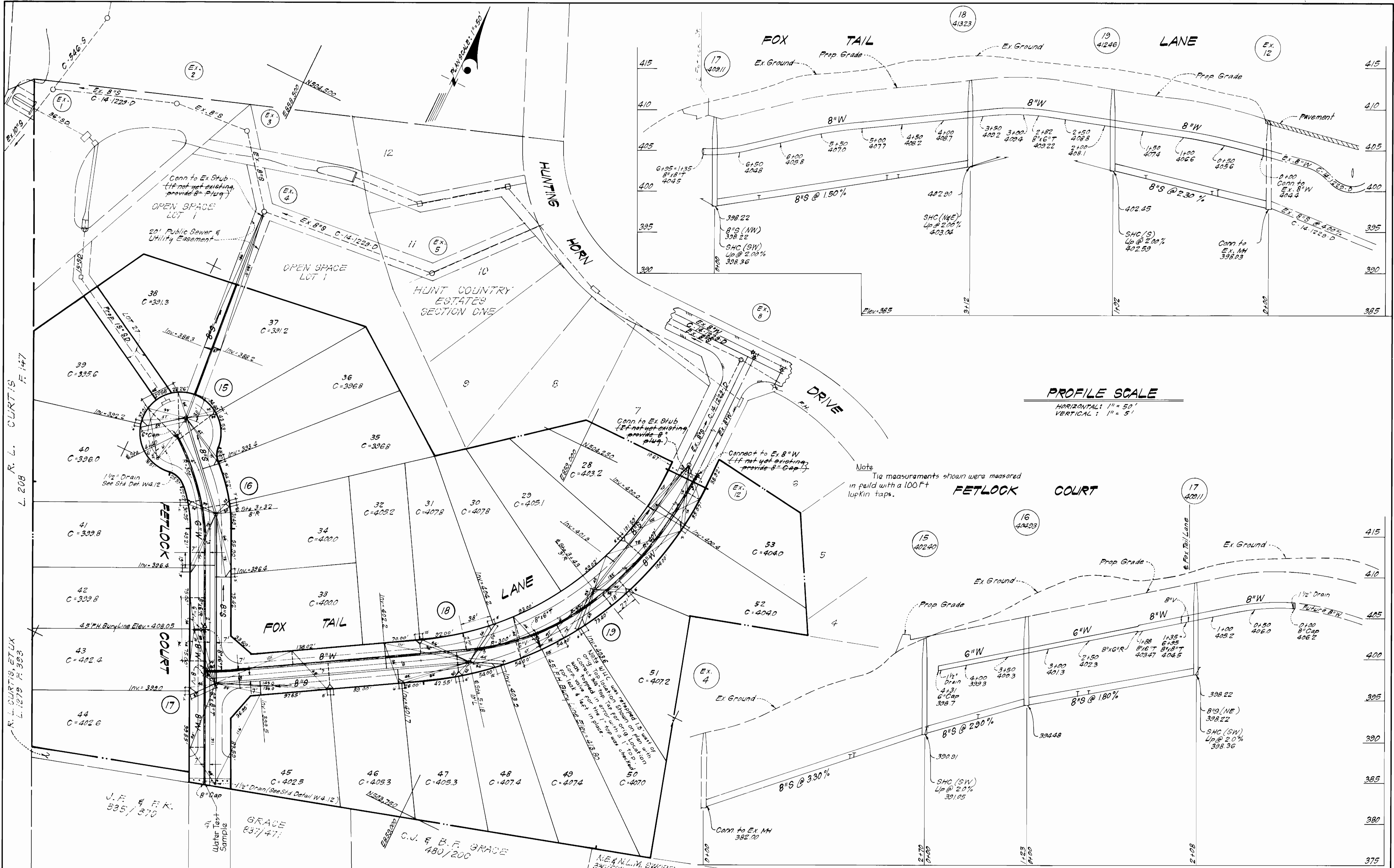
DES: CKG			
DRN: VL B			
CHK: CKG			
DATE: 6/84			
BY	NO.	REVISION	DATE

TITLE SHEET

600' SCALE MAP NO. 31 & 32 BLOCK NO.

HUNT COUNTRY ESTATES  
SECTION TWO  
1ST ELECTION DISTRICT  
CONTRACT NO. 14-I270 - D

SCALE  
1" = 600'  
SHEET  
1 OF 2



DEPARTMENT OF PUBLIC WORKS  
 HOWARD COUNTY, MARYLAND

*John F. Newman*  
 DIRECTOR OF PUBLIC WORKS  
 DATE 10-27-84

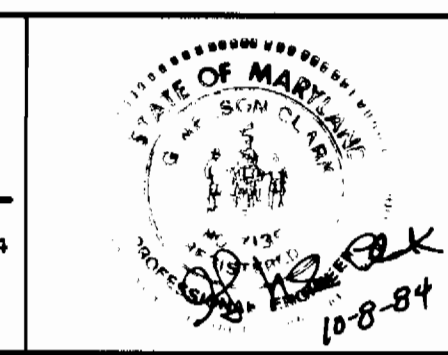
*William E. Sackett*  
 CHIEF, BUREAU OF ENGINEERING  
 DATE 10-30-84

*William E. Sackett*  
 CHIEF, BUREAU OF UTILITIES  
 DATE 10-24-84

*William E. Sackett*  
 CHIEF, LAND DEVELOPMENT DIV.  
 DATE 10-24-84

**CFE** CLARK · FINEPROCK & SACKETT  
 ENGINEERS · PLANNERS · SURVEYORS

11315 LOCKWOOD DRIVE SILVER SPRING, MARYLAND 20904  
 (301) 593-3400



DES: C.K.G.	BY: NO.	REVISION	DATE: 6/84
DRN: Y.L.B.			
CHK: C.K.G.			

PLAN AND PROFILES OF  
 WATER & SEWER MAINS

600 SCALE MAP NO. 21 & 32 BLOCK NO.

HUNT COUNTRY ESTATES  
 SECTION TWO  
 1ST ELECTION DISTRICT  
 CONTRACT NO. 14-1270-D

SCALE AS SHOWN  
 SHEET 2 OF 2