

NOTE -

- (1) LOTS I-110 thru I-111, I-140 thru I-149, LOTS I-155 thru I-164 SEWER HOUSE CONNECTION EXISTING CONT 34-1194-D
- (2) LOTS I-50 thru I-54 SEWER HOUSE CONNECTION EXISTING CONT 34-1240-D
- (3) LOTS I-110 thru I-112, WATER HOUSE CONNECTION EXISTING CONT 34-1240-D

PROPERTY OF THE HOWARD RESEARCH AND DEVELOPMENT CORPORATION
(Liber 463 Folio 196)

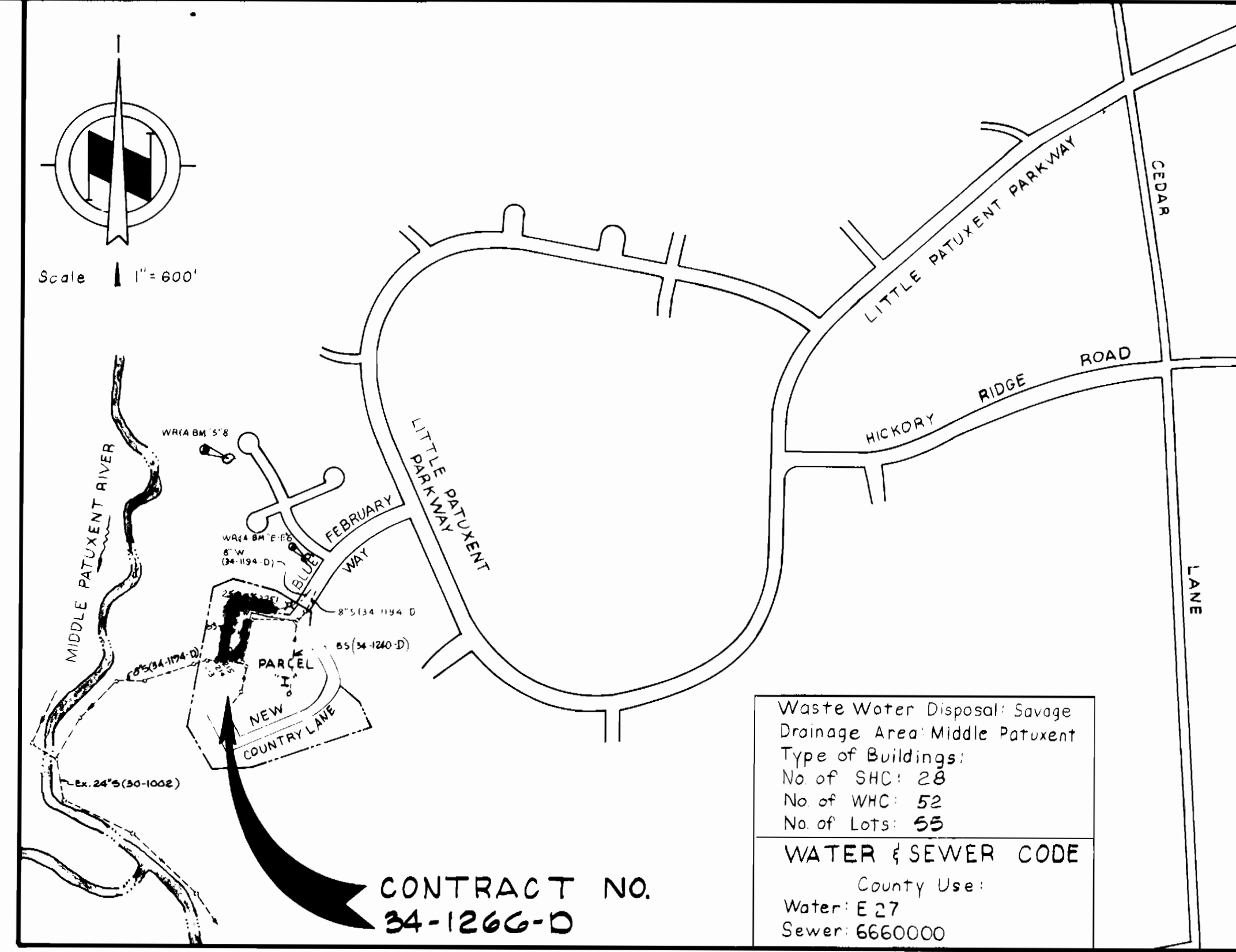
45FH Bury Line Elev. 354.0

BENCH MARKS

WR (A) BM * 5'B Elev. 343.496
R.R. Spike in base 20' Poplar 10' left of Sta. 6+15 ± Winterlong Way (Road "S")
WR (A) BM * "E" 6 Elev. 380.485
R.R. Spike in base 18' Oak 105' ± right of Sta. 6+70 ± Blue February Way (Road "E-E")

SEWER HOUSE CONNECTION INVERT ELEVATIONS AT PROPERTY LINE

STATION	LOT	INVERT
EX. MH 215 TO MH 250		
0+08	L I-139	344.99
0+32	L I-138	345.25
0+52	L I-137	345.46
0+72	L I-136	345.68
0+90	L I-135	345.87
+41	L I-134	346.42
+65	L I-133	346.68
+85	L I-132	346.90
2+05	L I-131	347.11
2+25	L I-130	347.33
2+45	L I-129	347.55
2+65	L I-128	347.76
2+85	L I-127	347.98
3+03	L I-126	348.17
EM 250	L I-125	352.67
	L I-124	352.12
	L I-123	350.57
	L I-122	350.07
MH 250 TO MH 251		
0+12	L I-121	350.18
0+32	L I-120	351.28
0+50	L I-119	352.46
0+95	L I-118	355.16
+19	L I-117	356.60
+39	L I-116	357.80
+59	L I-115	359.00
+79	L I-114	360.20
+99	L I-113	361.40
EM 251	L I-112	362.53



Waste Water Disposal: Savage
Drainage Area: Middle Patuxent
Type of Buildings:
No of SHC: 28
No of WHC: 52
No of Lots: 55
WATER & SEWER CODE
County Use:
Water: E 27
Sewer: 6660000

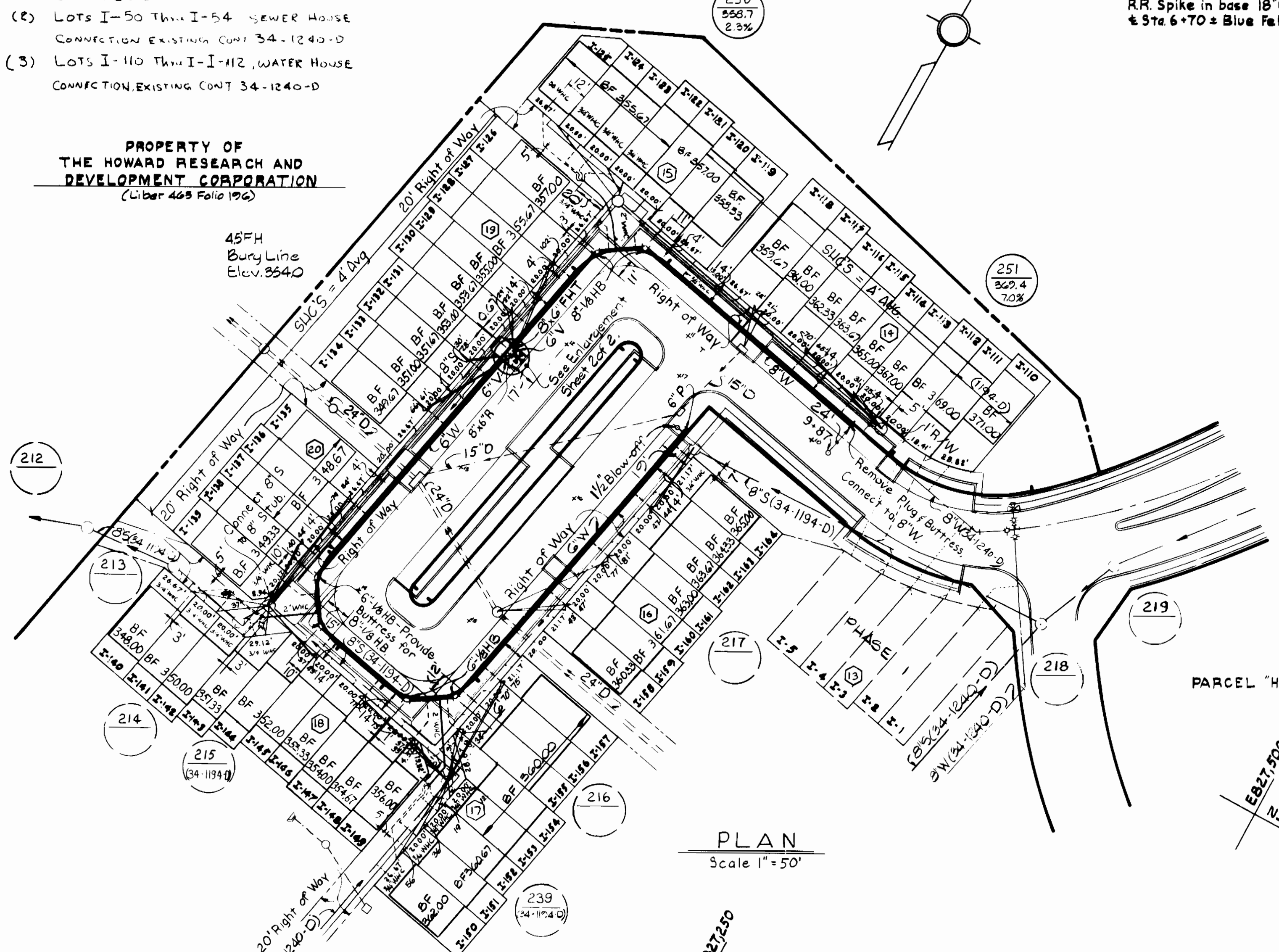
CONTRACT NO. 34-1266-D

VICINITY MAP

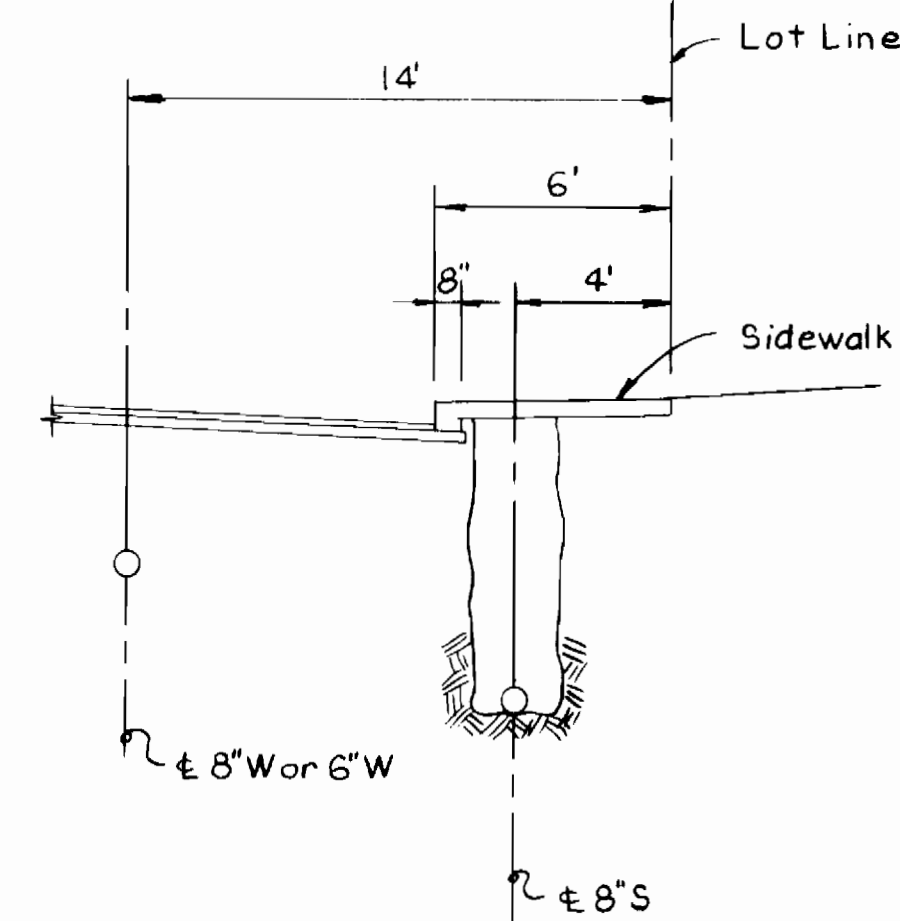
Scale 1" = 600'

GENERAL NOTES

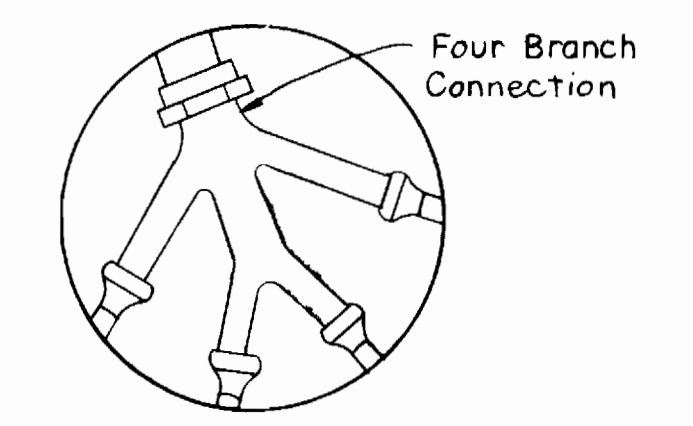
1. APPROXIMATE LOCATION OF EXISTING MAINS ARE SHOWN. THE CONTRACTOR SHALL TAKE ALL NECESSARY PRECAUTIONS TO PROTECT EXISTING MAINS AND SERVICES AND MAINTAIN UNINTERRUPTED SUPPLY. ANY DAMAGE INCURRED SHALL BE REPAIRED IMMEDIATELY TO THE SATISFACTION OF THE ENGINEER, AT THE CONTRACTOR'S EXPENSE.
2. ALL HORIZONTAL CONTROLS ARE BASED ON MARYLAND STATE COORDINATES.
3. ALL VERTICAL CONTROLS ARE BASED ON U.S.G.S. DATUM.
4. ALL PIPE ELEVATIONS SHOWN ARE INVERT ELEVATIONS.
5. CLEAR ALL UTILITIES BY A MINIMUM OF 6". CLEAR ALL POLES BY 2'-0" MINIMUM OR TUNNEL AS REQUIRED. ANY COST INCURRED TO THE CONTRACTOR FOR TUNNELING OR BRACING AT POLES SHALL BE INCLUDED IN UNIT PRICES BID FOR CONSTRUCTION OF THE MAIN.
6. FOR DETAILS NOT SHOWN ON THE DRAWINGS USE HOWARD COUNTY STANDARD DETAILS.
7. FOR MATERIALS AND CONSTRUCTION METHODS USE HOWARD COUNTY STANDARD SPECIFICATIONS.
8. CONTRACTOR SHALL LOCATE EXISTING UTILITIES A MINIMUM OF TWO (2) WEEKS IN ADVANCE OF CONSTRUCTION OPERATIONS IN THE VICINITY OF PROPOSED UTILITIES AT HIS OWN EXPENSE.
9. CONTRACTOR SHALL NOTIFY THE FOLLOWING UTILITIES OR AGENCIES AT LEAST FIVE (5) WORKING DAYS BEFORE STARTING WORK SHOWN ON THESE PLANS.
STATE HIGHWAY ADMINISTRATION - 531-5533
BALTIMORE GAS AND ELECTRIC COMPANY - UNDERGROUND ELECTRIC DISTRIBUTION CUSTOMER SERVICE - 685-0123.
BALTIMORE GAS & ELECTRIC COMPANY - UNDERGROUND GAS DISTRIBUTION CUSTOMER SERVICE - 685-0123.
"MISS UTILITY" - 1 - 559-0100
CHESAPEAKE & POTOMAC (C&P) TELEPHONE COMPANY - 393-3648.
AMERICAN TELEPHONE AND TELEGRAPH - CABLE LOCATION DIVISION - 1 - 865-3803.
COLONIAL PIPELINE COMPANY - 781-4641.
BUREAU OF UTILITIES HOWARD COUNTY - 992-2366.
10. TREES ARE TO BE PROTECTED FROM DAMAGE TO MAXIMUM EXTENT. TREES LOCATED WITHIN THE CONSTRUCTION STRIP ARE NOT TO BE REMOVED OR DAMAGED BY THE CONTRACTOR.
11. CONTRACTOR SHALL REMOVE TREES, STUMPS AND ROOTS ALONG LINE OF EXCAVATION AS DIRECTED BY THE ENGINEER. PAYMENT FOR SUCH REMOVAL SHALL BE INCLUDED IN THE UNIT PRICE BID FOR CONSTRUCTION OF THE MAIN.
12. PLACE REGULATION "MEN WORKING" AND WARNING SIGNS AS REQUIRED TO COMPLY WITH MARYLAND STATE HIGHWAY ADMINISTRATION MANUAL OF TRAFFIC CONTROL FOR HIGHWAY CONSTRUCTION AND MAINTENANCE OPERATIONS.
13. ALL WATER MAINS SHALL BE D.I.P. UNLESS OTHERWISE NOTED.
14. TOP OF ALL WATER MAINS SHALL HAVE A MINIMUM OF 3-1/2" COVER UNLESS OTHERWISE NOTED.
15. VALVES ADJACENT TO TEES SHALL BE STRAPPED TO TEES.
16. BLOCK ALL FITTINGS WITH CONCRETE.
17. BURY LINE ELEVATIONS ON FIRE HYDRANTS SHALL BE SET TO THE ELEVATIONS SHOWN ON THE DRAWINGS. ALL FIRE HYDRANTS SHALL BE STRAPPED AND BUTTRESSED WITH CONCRETE IN ACCORDANCE WITH STANDARD DETAILS. SOIL AROUND THE FIRE HYDRANT TO BE COMPACTED IN ACCORDANCE WITH SECTIONS 1003 AND 1008 OF THE STANDARD SPECIFICATIONS.
18. ALL WATER HOUSE CONNECTIONS SHALL BE FOR AN INSIDE METER SETTING, UNLESS OTHERWISE NOTED.
19. THE CONTRACTOR SHALL NOT OPERATE ANY WATER MAIN VALVES ON THE EXISTING SYSTEM.
20. ALL SEWER MAINS SHALL BE C.S.P.X., R.C.S.P., V.C.P.X., A.C.P. CLASS 2400 OR PVC UNLESS OTHERWISE NOTED.
21. THE CONTRACTOR SHALL PROVIDE A JOINT IN ALL SEWER MAINS WITHIN 2'-0" OF EXTERIOR MANHOLE WALL.
22. ALL MANHOLES SHALL BE 4'-0" INSIDE DIAMETER, UNLESS OTHERWISE NOTED.
23. MANHOLES SHOWN WITH 12" AND 16" WALLS ARE FOR BRICK MANHOLES ONLY.
24. MANHOLES DESIGNATED W.T. IN PLAN AND PROFILE SHALL HAVE WATERTIGHT FRAME AND COVERS, STANDARD DETAIL G5.52
25. ALL MANHOLE FRAME AND COVERS SHALL BE SET 0.5' ABOVE EXISTING GRADE WHERE SHOWN IN PROFILE.
26. ORIGINAL GROUND OVER WATER AND SEWER WAS TAKEN FROM AERIAL PHOTOGRAPHY PREPARED BY MAPS AND INC., AND VERIFIED BY FIELD SURVEY IN SEPTEMBER 1983.
27. ALL COPPER WATER HOUSE CONNECTIONS SHALL UTILIZE FLARED FITTINGS.
28. ALL WATER HOUSE CONNECTIONS SHALL BE 1" UNLESS OTHERWISE NOTED.



PLAN
Scale 1" = 50'



TYPICAL SECTION
Scale 1" = 5'



4-WAY WHC DETAIL
Lots I-122 thru I-125,
I-140 thru I-143 &
I-150 thru I-153.
No Scale

- Notes
1. Offset MH 250 toward West & MH 251 toward North.
 2. For 1/2" Blow-off see Standard Detail W 4.12.

QUANTITIES				
ITEM	BID	AS BUILT	MATERIAL/SUPPLIER	
1. 8" Sewer LF	550	538.0	JOHN MANSVILLE, PVC	
2. Manholes Ea	2	2		
3. 8" Water LF	280	281	D.I.P. GRIFFEN	
4. 6" Water LF	540	530		
5. Fire Hydrants Ea	1	1	DRESSER	
6. 6" SH Connections LF	200	196.0		
7. 2" WH Connections LF	150	143		
8. 1" WH Connections LF	210	203		
9. 3/4" WH Connections LF	790	779		
10. 1/2" Blow-off Ea	1	1		
11. 6" VALVE (Exc. FH)	1	1	DRESSER	

REVIEWED FOR HOWARD SOIL CONSERVATION DISTRICT AND MEETS TECHNICAL REQUIREMENT
DATE 4/27/84
SIGNATURE [Signature]
U.S. SOIL CONSERVATION SERVICE

THIS DEVELOPMENT PLAN IS APPROVED FOR SOIL EROSION AND SEDIMENT CONTROL BY THE HOWARD COUNTY CONSERVATION DISTRICT.
APPROVED: [Signature]
HOWARD S.C.D. DATE 5-29-84

SEDIMENT CONTROL MEASURES FOR THIS CONTRACT WILL BE IMPLEMENTED IN ACCORDANCE WITH ARTICLE 15 OF THE STANDARD SPECIFICATIONS, AND ROAD CONSTRUCTION PLANS F-85-01.

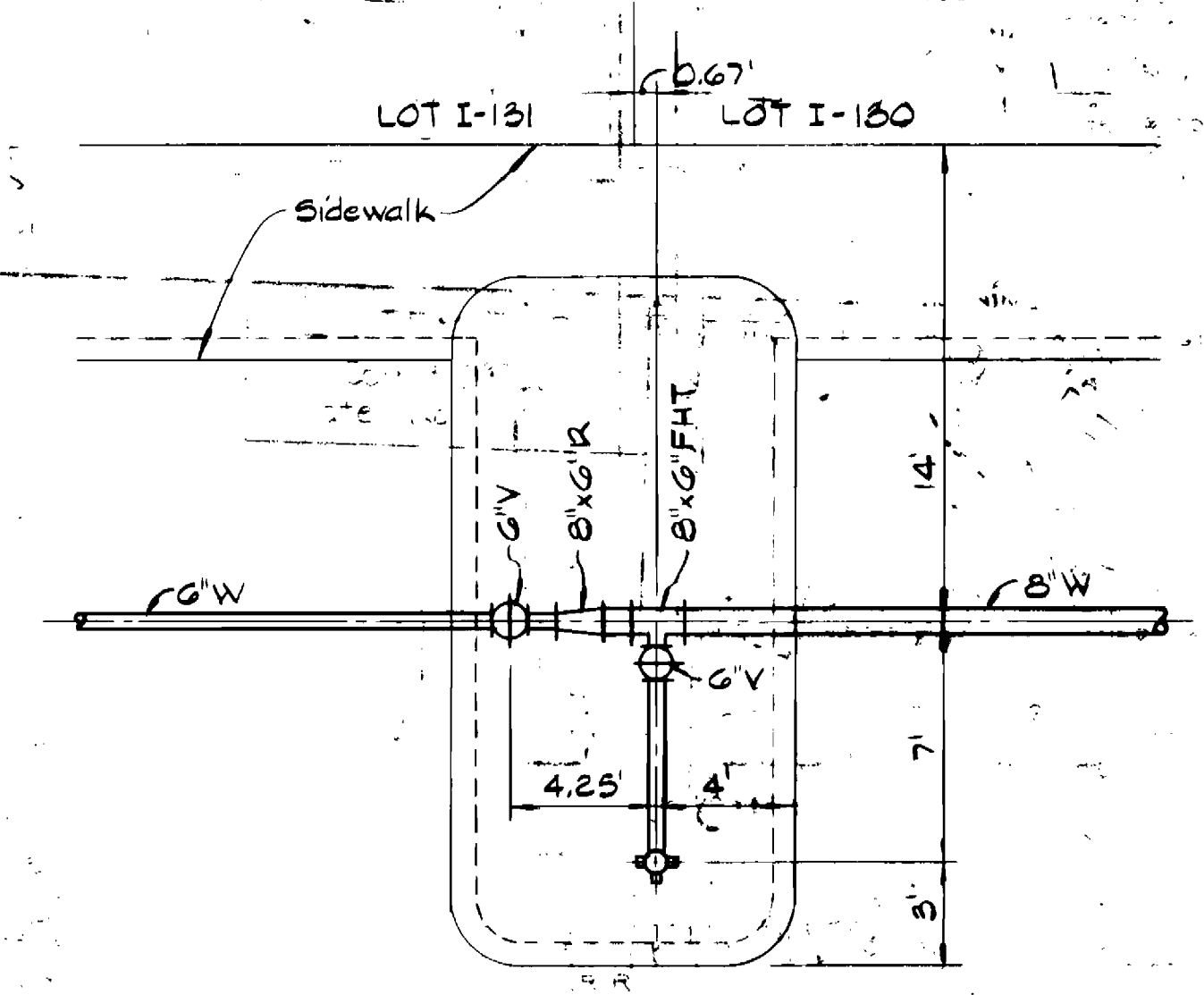
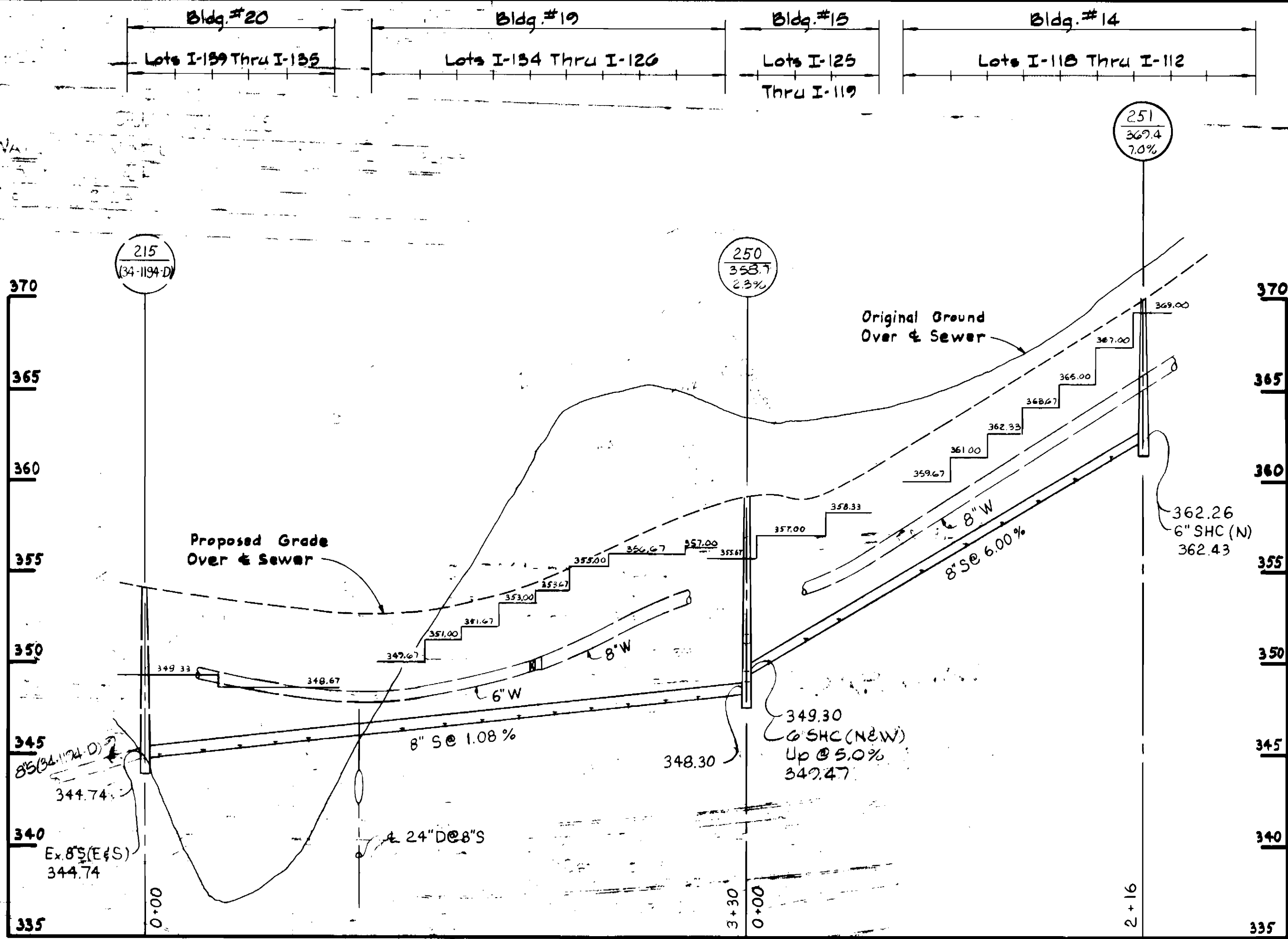
DEPARTMENT OF PUBLIC WORKS
HOWARD COUNTY, MARYLAND
Robert M. Bevinger 9-21-84
DIRECTOR OF PUBLIC WORKS - DATE
Robert M. Bevinger 9-4-84
CHIEF - BUREAU OF UTILITIES - DATE

WHITMAN, REQUARDT AND ASSOCIATES ENGINEERS
2315 ST. PAUL ST.
BALTIMORE, MARYLAND
[Signature]
[Signature]

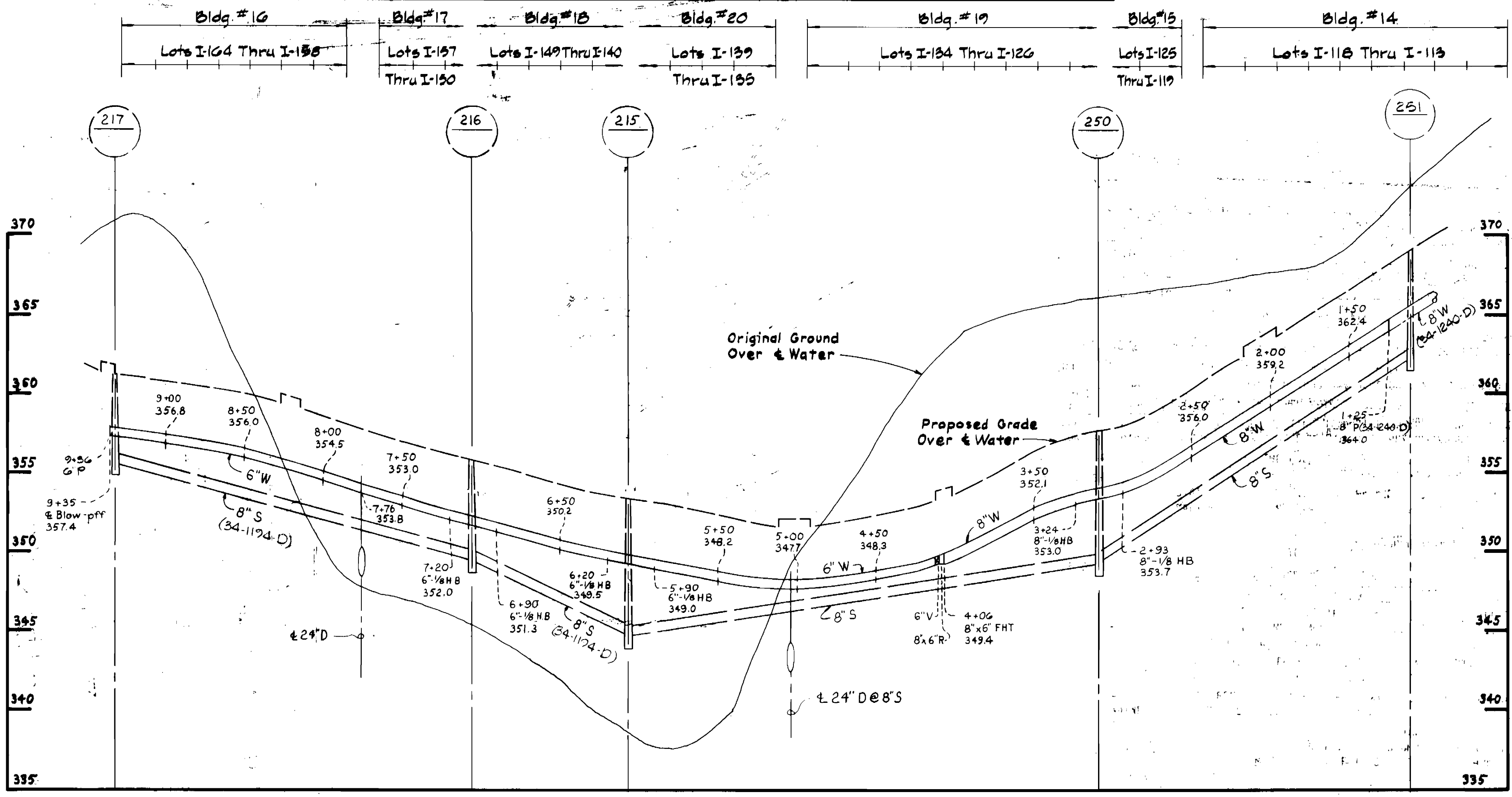
DES: S.J.			
DRN: R.P.G.			
CHK: R.B.N.			
DATE:	BY NO.	REVISION	DATE

PLAN OF WATER & SEWER MAINS
600' SCALE MAP NO. 35 BLOCK NO. 9, 10

COLUMBIA VILLAGE OF HICKORY RIDGE SECTION 3 AREA 6 ELECTION DISTRICT NO. 5 CONTRACT NO. 34-1266-D
SCALE AS SHOWN SHEET 1 OF 2



FH LOCATION ENLARGEMENT
Scale: 1"=5'



PROFILES
Scale: H: 1" = 50'
V: 1" = 5'

DEPARTMENT OF PUBLIC WORKS
HOWARD COUNTY, MARYLAND

Robert M. Bennett 9-21-84
DIRECTOR OF PUBLIC WORKS - DATE

Robert M. Bennett 9-2-84
CHIEF - BUREAU OF UTILITIES - DATE

William H. Bennett 9-2-84
CHIEF - BUREAU OF ENGINEERING - DATE

William H. Bennett 9-2-84
CHIEF - LAND DEVELOPMENT DIVISION - DATE

WHITMAN, REQUARDT
AND ASSOCIATES
ENGINEERS

2315 ST. PAUL ST.
BALTIMORE, MARYLAND

REGISTERED PROFESSIONAL ENGINEER & LAND SURVEYOR
1974

DES: S.J.					
DRN: R.P.G.					
CHK: R.B.N.					
DATE:	BY:	NO:	REVISION:	DATE:	

PROFILES OF
WATER & SEWER MAINS

600' SCALE MAP NO. 35 BLOCK NO.

COLUMBIA
VILLAGE OF HICKORY RIDGE
SECTION 3 AREA 6
ELECTION DISTRICT NO. 5
CONTRACT NO. 34-1266-D

SCALE AS SHOWN
SHEET 2 OF 2