

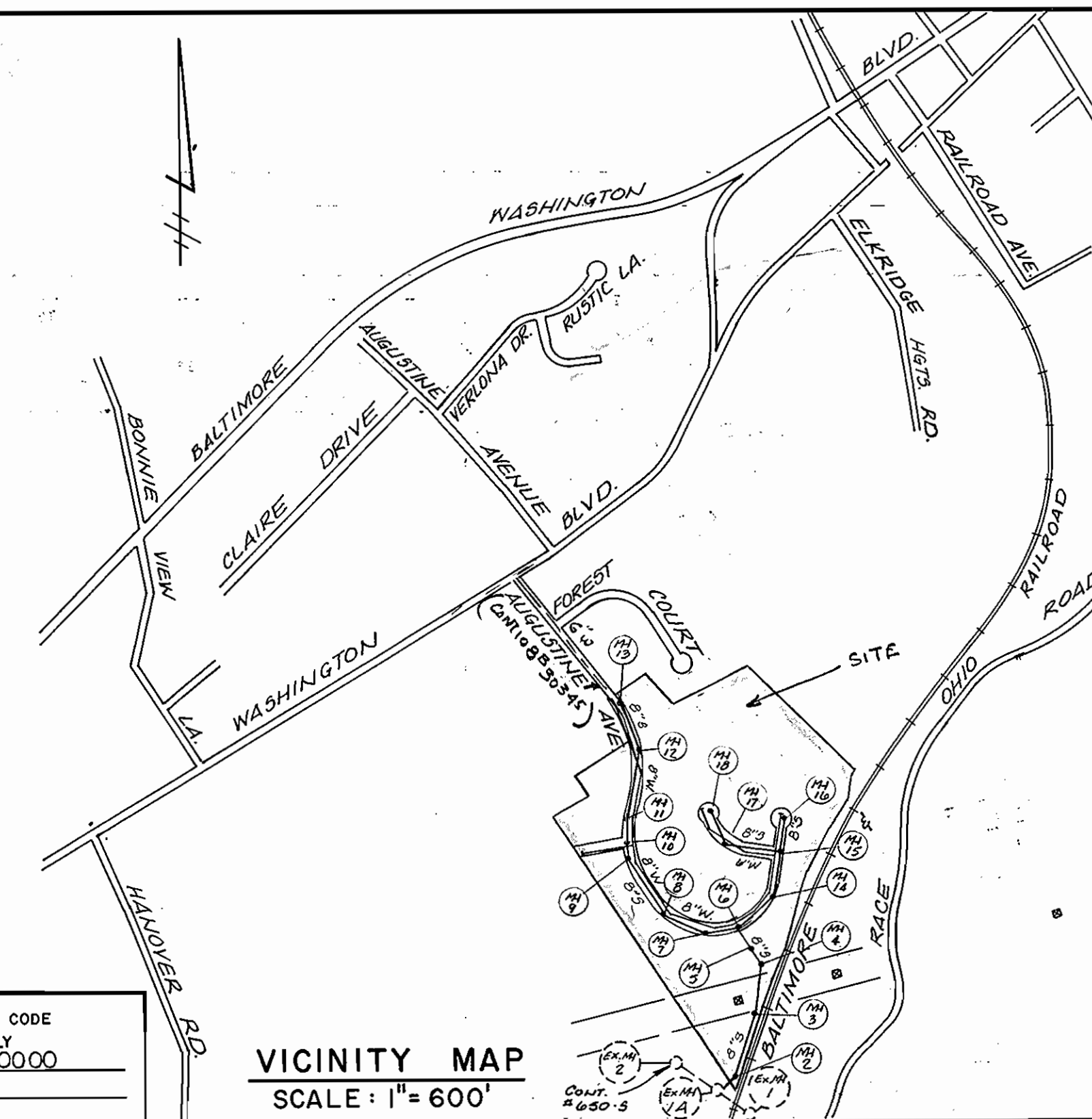
SHEET INDEX	
NO.	DESCRIPTION
1	TITLE SHEET
2	PLAN-AUGUSTINE AVE., ADCOCK LANE & HOSTA COURT
3	PLAN & PROFILE- OUTFALL SEWER
4	PROFILE- AUGUSTINE AVE., ADCOCK LANE & HOSTA COURT

DEPARTMENT OF PUBLIC WORKS
HOWARD COUNTY, MARYLAND

QUANTITIES			
ITEM	QUANTITY AS BUILT	QUANTITY	MATERIAL / SUPPLIER
8" SAN.	3160 L.F.	3099 L.F.	Belair Rd. Supply
SAN. MH	19 EA.	19 EA.	Atlantic Precast
BLOW OFF	2 EA.	2 EA.	M&H Flush Hydrant
6" S.H.C.	1230 L.F.	1403 L.F.	Belair Rd. Supply
6" WATER	615 L.F.	619 L.F.	Griffin
8" WATER	1785 L.F.	1803	Griffin
FIRE HYD.	3 EA.	3 EA.	M&H
8" VALVES	3 EA.	3 EA.	M&H
8" FITTINGS	16 EA.	16 EA.	M&H
6" VALVES	2 EA.	2 EA.	M&H
6" FITTINGS	4 EA.	4 EA.	M&H
1" W.H.C.	485 L.F.	395 L.F.	Cambridge Lee
3/4" W.H.C.	985 L.F.	1309 L.F.	Cambridge Lee
DROP MH "A"	1 EA.	1 EA.	
DROP MH "B"	2 EA.	2 EA.	

TYPE OF BUILDINGS	SINGLE FAMILY DETACHED
NUMBER OF LOTS	66
NUMBER OF SEWER HOUSE CONN.	67
NUMBER OF WATER HOUSE CONN.	67
DRAINAGE AREA	PATAPSCO

SEWER & WATER CODE
COUNTY USE ONLY
SEWER NO. 2090000
WATER NO. A01



CONTRACT - 14-1256-D
WATER AND SEWERAGE FACILITIES
MOUNT AUGUSTINE
SECTION 1 - AREA 2

GENERAL NOTES

- APPROXIMATE LOCATION OF EXISTING MAINS ARE SHOWN. THE CONTRACTOR SHALL TAKE ALL NECESSARY PRECAUTIONS TO PROTECT EXISTING MAINS AND SERVICES AND MAINTAIN UNINTERRUPTED SUPPLY. ANY DAMAGE INCURRED SHALL BE REPAIRED IMMEDIATELY TO THE SATISFACTION OF THE ENGINEER, AT THE CONTRACTOR'S EXPENSE.
- ALL HORIZONTAL CONTROLS ARE BASED ON MARYLAND STATE COORDINATES.
- ALL VERTICAL CONTROLS ARE BASED ON
- ALL PIPE ELEVATIONS SHOWN ARE INVERT ELEVATIONS.
- CLEAR ALL UTILITIES BY A MINIMUM OF 6". CLEAR ALL POLES BY 2'-0" MINIMUM OR TUNNEL AS REQUIRED. THE OWNER HAS CONTACTED THE UTILITIES COMPANIES AND HAS MADE ARRANGEMENTS FOR BRACING OF POLES AS SHOWN ON THE DRAWINGS. IN THE EVENT THE CONTRACTOR'S WORK REQUIRES THE BRACING OF ADDITIONAL POLES, ANY COST INCURRED BY THE OWNER FOR THE BRACING OF ADDITIONAL POLES OR DAMAGES SHALL BE DEDUCTED FROM MONEY OWED THE CONTRACTOR. THE CONTRACTOR SHALL COORDINATE WITH THE UTILITY COMPANIES TO SCHEDULE THE BRACING OF THE POLES.
- FOR DETAILS NOT SHOWN ON THE DRAWINGS, AND FOR MATERIALS AND CONSTRUCTION METHODS, USE HOWARD COUNTY DESIGN MANUAL, VOLUME IV, STANDARD SPECIFICATIONS AND DETAILS FOR CONSTRUCTION. THE CONTRACTOR SHALL HAVE A COPY OF VOLUME IV ON THE JOB.
- WHERE TEST PITS HAVE BEEN MADE ON EXISTING UTILITIES, THEY ARE NOTED BY THE SYMBOL \square AT THE LOCATION OF THE TEST PIT. A NOTE OR NOTES CONTAINING THE RESULTS OF THE TEST PIT OR PITS IS INCLUDED ON THE DRAWINGS. EXISTING UTILITIES IN THE VICINITY OF THE PROPOSED WORK FOR WHICH TEST PITS HAVE NOT BEEN DUG SHALL BE LOCATED BY THE CONTRACTOR TWO WEEKS IN ADVANCE OF CONSTRUCTION OPERATIONS AT HIS OWN EXPENSE.
- CONTRACTOR SHALL NOTIFY THE FOLLOWING UTILITIES OR AGENCIES AT LEAST FIVE WORKING DAYS BEFORE STARTING WORK SHOWN ON THESE PLANS:
 - STATE HIGHWAY ADMINISTRATION - 531-5533
 - BALTIMORE GAS & ELECTRIC CO. - CONTRACTOR SERVICES 561-2585
 - BALTIMORE GAS & ELECTRIC CO. - UNDER GROUND DAMAGE CONTROL - 234-5621
 - BALTIMORE GAS & ELECTRIC CO. - TROUBLE SHOOTING - 298-9013
 - MISS UTILITY - 1-559-0100
 - COLONIAL PIPELINE CO. - 795-1390
 - BUREAU OF UTILITIES, HOWARD COUNTY DEPARTMENT OF PUBLIC WORKS - 992-2366
- TREES AND SHRUBS ARE TO BE PROTECTED FROM DAMAGE TO MAXIMUM EXTENT. TREES AND SHRUBS LOCATED WITHIN THE CONSTRUCTION STRIP ARE NOT TO BE REMOVED OR DAMAGED BY THE CONTRACTOR.
- CONTRACTOR SHALL REMOVE TREES, STUMPS AND ROOTS ALONG LINE OF EXCAVATION. PAYMENT FOR SUCH REMOVAL SHALL BE INCLUDED IN THE UNIT PRICE BID FOR CONSTRUCTION OF THE MAIN.

WATER :

- ALL WATER MAINS TO BE D.I.P., UNLESS OTHERWISE NOTED.
- TOPS OF ALL WATER MAINS TO HAVE A MINIMUM OF 3'-1/2" COVER UNLESS OTHERWISE NOTED.
- VALVES ADJACENT TO TEES SHALL BE STRAPPED TO TEES.
- ALL FITTINGS SHALL BE BUTTRESSED OR ANCHORED WITH CONCRETE IN ACCORDANCE WITH THE STANDARD DETAILS UNLESS OTHERWISE PROVIDED FOR ON THE DRAWINGS.
- FIRE HYDRANTS SHALL BE SET TO THE BURY LINE ELEVATIONS SHOWN ON THE DRAWINGS. ALL FIRE HYDRANTS SHALL BE STRAPPED AND BUTTRESSED WITH CONCRETE IN ACCORDANCE WITH STANDARD DETAILS. SOIL AROUND THE FIRE HYDRANTS SHALL BE COMPACTED IN ACCORDANCE WITH SECTION 1003 THE STANDARD SPECIFICATIONS.
- THE CONTRACTOR SHALL NOT OPERATE ANY WATER MAIN VALVES ON THE EXISTING WATER SYSTEM.
- ALL WATER HOUSE CONNECTIONS SHALL BE FOR AN INSIDE METER SETTING.
- FOR ALL COPPER WATER HOUSE CONNECTIONS UTILIZE FLARED TYPE FITTINGS.
- COORDINATE NEW 3/4" INCH WATER HOUSE CONNECTION TO EXISTING WATER METER VAULT LOCATION WITH BUREAU OF UTILITIES AT LEAST 48 HOURS IN ADVANCE.

SEWER :

- ALL SEWER MAINS SHALL BE C.S.P.X., R.C.S.P., V.C.P.X., A.C.P. CLASS 2400 OR P.V.C. UNLESS OTHERWISE NOTED.
- THE CONTRACTOR SHALL PROVIDE A JOINT IN ALL SEWER MAINS WITHIN 2'-0" OF EXTERIOR MANHOLE WALL.
- ALL MANHOLES SHALL BE 4'-0" INSIDE DIAMETER UNLESS OTHERWISE NOTED.
- MANHOLES SHOWN WITH 12" AND 16" WALLS ARE BRICK MANHOLES ONLY.
- MANHOLES DESIGNATED W.T. IN PLAN AND PROFILE SHALL HAVE WATERTIGHT FRAME AND COVERS, STANDARD DETAIL Δ 6.52 WHERE WATERTIGHT MANHOLE FRAME AND COVER IS USED, SET TOP OF FRAME 1'-6" ABOVE FINISHED GRADE UNLESS OTHERWISE NOTED ON THE DRAWINGS.
- HOUSE(S) WITH THE SYMBOL "C.N.S." INDICATES THAT CELLAR CANNOT BE SERVED.

REVIEWED FOR HOWARD COUNTY SOIL CONSERVATION DISTRICT AND MEETS TECHNICAL REQUIREMENTS
M.M.K. S.M. 9/12/84
U.S. SOIL CONSERVATION SERVICE DATE

THIS DEVELOPMENT PLAN IS APPROVED FOR EROSION AND SEDIMENT CONTROL BY THE HOWARD SOIL CONSERVATION DISTRICT
APPROVED: *Stephen L. Fisher* 9/13/84
HOWARD SOIL CONSERVATION DISTRICT DATE

SEDIMENT CONTROL MEASURES FOR THIS CONTRACT WILL BE IMPLEMENTED IN ACCORDANCE WITH ARTICLE 15 OF THE SPECIFICATIONS AND FINAL PLANS # F-54-212

DEPARTMENT OF PUBLIC WORKS
HOWARD COUNTY, MARYLAND
DIRECTOR OF PUBLIC WORKS DATE: *Robert M. Beuzier* 9-19-84
CHIEF - LAND DEVELOPMENT DIVISION DATE: *Robert M. Beuzier* 9-5-84
CHIEF - BUREAU OF ENGINEERING DATE: *Robert M. Beuzier* 9-5-84
CHIEF - BUREAU OF UTILITIES DATE:

A.P.R. ASSOCIATES, INC.
LAND SURVEYORS AND ENGINEERS
7427 HARFORD ROAD
BALTIMORE, MARYLAND 21234

CONTRACT NO. 14-1256-D

LOCATION MAP

MOUNT AUGUSTINE
ELECTION DISTRICT NO. 1 ELKRIDGE

DRAWING NO. 1 OF 4
SCALE AS SHOWN

CONTRACT NO. 14-1256-D
MOUNT AUGUSTINE
SECTION 1 AREA 2
WATER AND SEWERAGE FACILITIES



REV. 11-1-84 STATE HEALTH DEPT. CMTS.

1256/1 WS

1256/2 WS

CONNECTION TO EXISTING 6" WATER MAIN: TEST PIT EXISTING MAIN AT PROPOSED CONNECTION PRIOR TO EXCAVATING FOR NEW MAIN. INSTALL NEW 6" WATER AS SHOWN TO WITHIN 5 FEET OF CONNECTION. MAKE CONNECTION TO EXISTING 6" C.I.P. WATER AND TO EXISTING 6" F.H. CONNECTION IN ACCORDANCE WITH SECTION 100-4.03, 04. INTERRUPTION TO WATER SUPPLY SHALL BE AS SHORT AS POSSIBLE. PROVIDE 3/4" W.H.C. TO EACH EX. WATER METER AS SHOWN. DO NOT ABANDON EX. G. WATER UNTIL EXIST. HOMES ARE PHYSICALLY CONNECTED TO NEW 8" WATER MAIN.

OPEN SPACE SCALE: 1"=100'

PROPERTY INSET SCALE: 1"=100'

SEWER HOUSE CONNECTIONS

LOT	C.E.	INV. @ R.	LOT	C.E.	INV. @ R.
1	172.28	169.18	33	103.92	100.62
2	160.44	157.14	34	101.92	98.62
3	183.42	177.50	35	95.92	91.24
4	175.92	172.42	36	99.50	91.24
5	168.42	165.12	37	99.50	90.99
6	157.92	154.62	38	99.50	90.99
7	150.42	147.12	39	95.92	92.22
8	145.92	142.62	40	97.92	94.22
9	137.92	134.62	41	99.92	96.60
10	133.92	130.62	42	99.92	96.60
11	129.92	126.60	43	97.92	94.62
12	125.92	122.62	44	95.92	92.62
13	121.92	118.62	45	92.02	88.22
14	119.02	115.72	46	91.32	88.22
15	117.92	114.62	47	90.02	80.30
16	115.92	112.62	48	94.49	90.79
17	113.92	110.60	49	95.59	91.71
18	110.92	107.60	50	98.21	94.51
19	105.92	102.60	51	102.01	98.31
20	100.73	95.98	52	106.76	103.06
21	95.92	92.62	53	107.92	104.22
22	93.92	90.62	54	110.25	106.95
23	94.92	91.62	55	113.92	110.60
24	96.92	93.62	56	115.92	112.62
25	107.28	103.72	57	117.92	114.62
26	109.22	105.72	58	119.18	115.68
27	111.12	107.42	59	119.18	115.68
28	111.92	108.22	60	121.28	117.78
29	113.92	110.22	61	123.77	120.27
30	113.92	110.22	62	125.97	122.67
31	112.75	109.05	63	130.67	127.37
32	112.50	108.80	64	136.92	133.42
33	111.02	107.32	65	143.92	140.42
34	108.22	104.92			

* INDICATES F.F. SERVICE ONLY NO CELLAR SERVICE

FOR PROFILE SEE SHEET NUMBER 4

PLAN SCALE: 1"=50'

REVIEWED FOR HOWARD COUNTY SOIL CONSERVATION DISTRICT AND MEETS TECHNICAL REQUIREMENTS
 M.K. S. 9/13/84
 U.S. SOIL CONSERVATION SERVICE DATE

THIS DEVELOPMENT PLAN IS APPROVED FOR EROSION AND SEDIMENT CONTROL BY THE HOWARD SOIL CONSERVATION DISTRICT.
 APPROVED: Stephen L. Fuller 9/13/84
 HOWARD SOIL CONSERVATION DISTRICT DATE

DEPARTMENT OF PUBLIC WORKS
 HOWARD COUNTY, MARYLAND
 Robert M. Berger 9-19-84
 DIRECTOR OF PUBLIC WORKS DATE
 Robert M. Berger 9-5-84
 CHIEF - BUREAU OF ENGINEERING DATE CHIEF - BUREAU OF UTILITIES DATE

APR ASSOCIATES, INC.
 LAND SURVEYORS AND ENGINEERS
 7427 HARFORD ROAD
 BALTIMORE, MARYLAND 21234

CONTRACT NO. 14-1256-D

PLAN OF WATER AND SEWER MAINS

MOUNT AUGUSTINE ELECTION DISTRICT NO. 1 ELK RIDGE

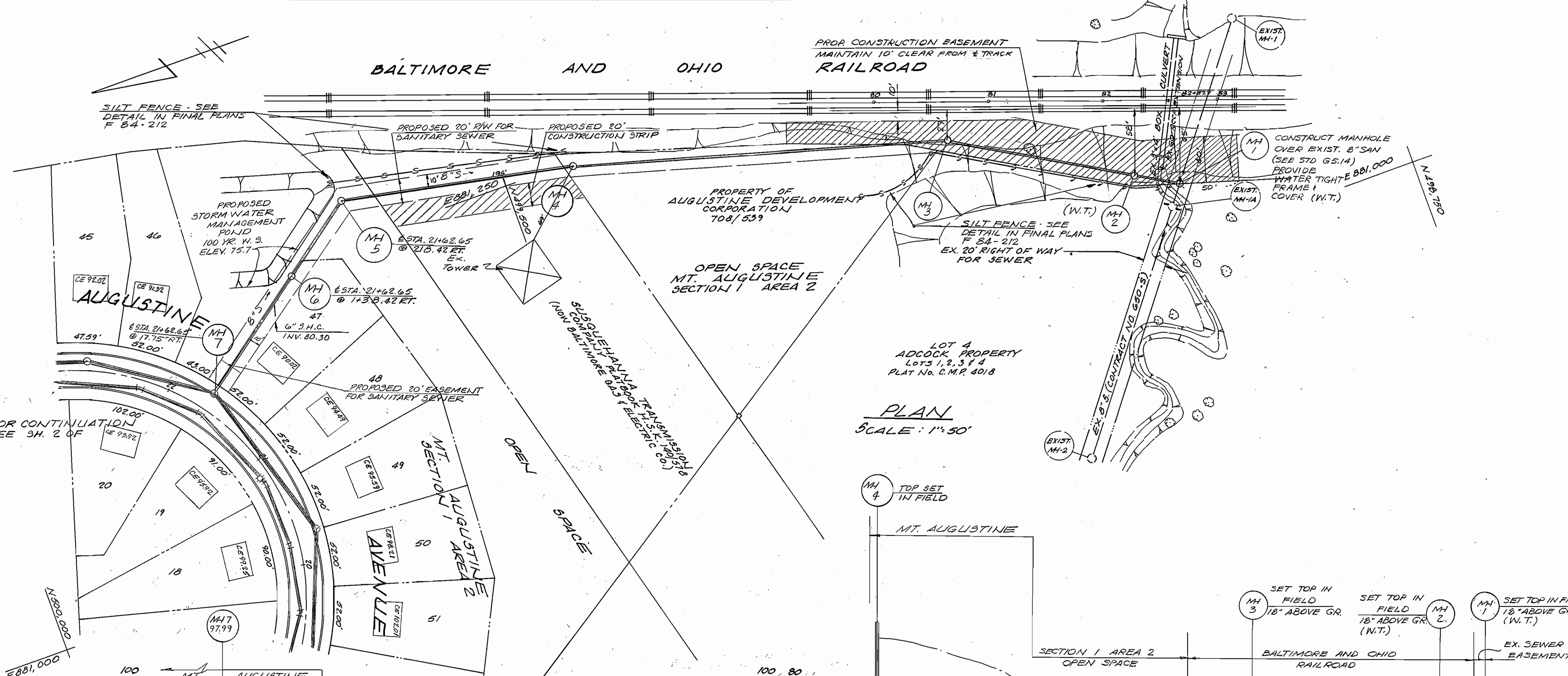
DRAWING NO. 2 OF 4 SCALE 1"=50'

ENGR. REPORT PRINT MAR 3 1983

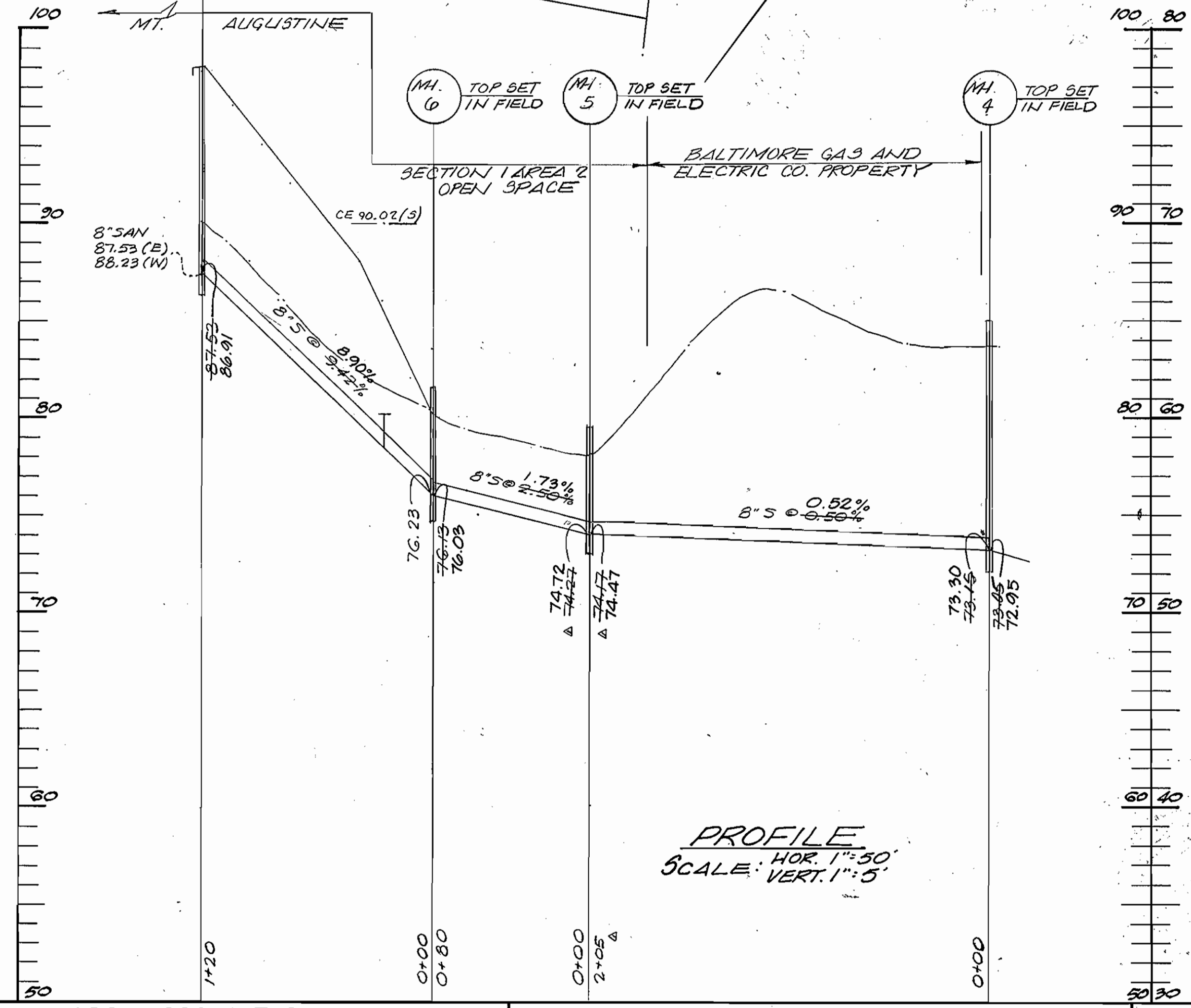
AS-BUILT April 1, 1985



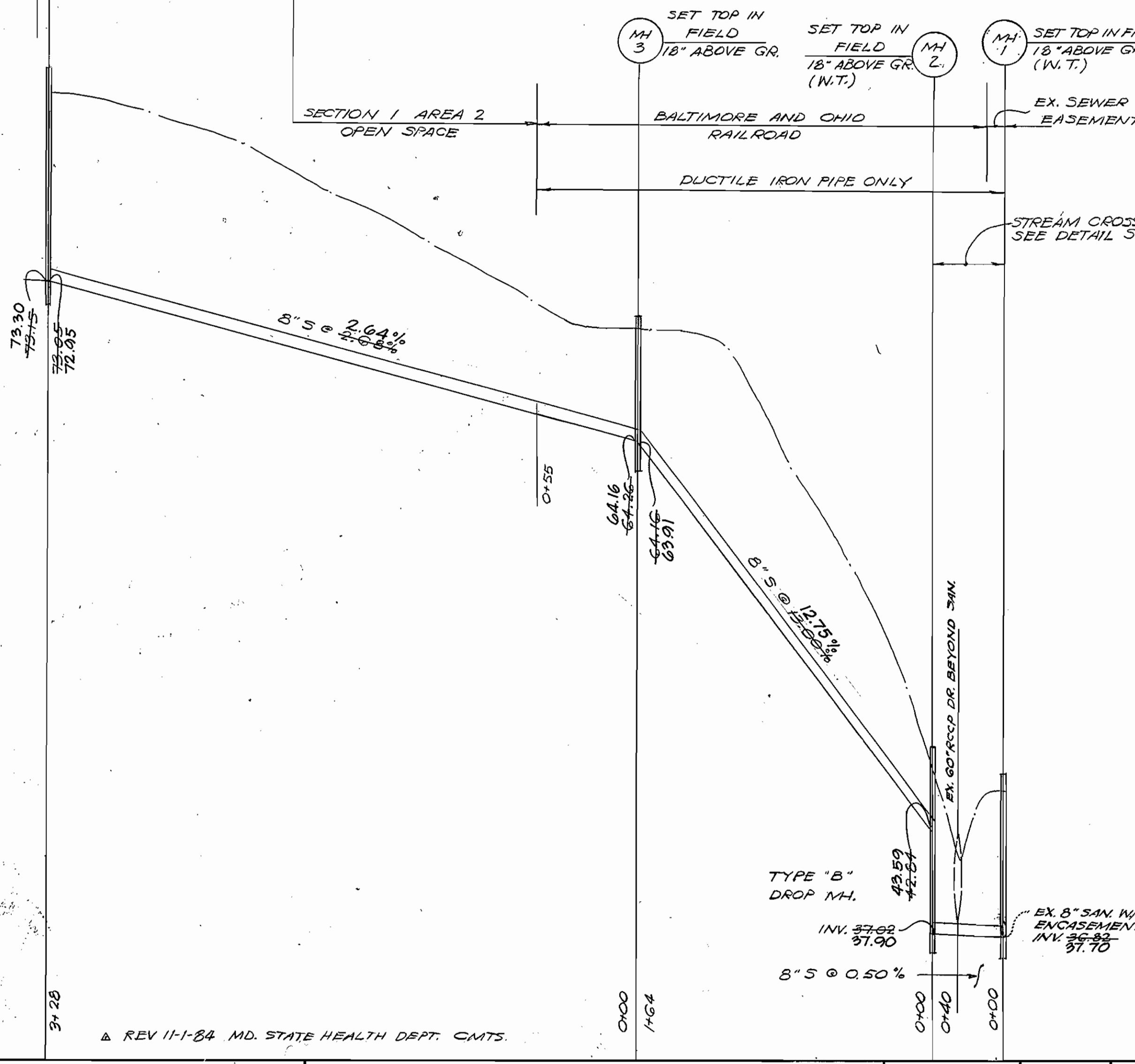
1256/3 WS



PLAN
SCALE: 1" = 50'



PROFILE
SCALE: HOR. 1" = 50'
VERT. 1" = 5'



REVIEWED FOR HOWARD COUNTY SOIL CONSERVATION DISTRICT AND MEETS TECHNICAL REQUIREMENTS
 M. K. S. M. 9/13/84
 U.S. SOIL CONSERVATION SERVICE DATE
 THIS DEVELOPMENT PLAN IS APPROVED FOR EROSION AND SEDIMENT CONTROL BY THE HOWARD SOIL CONSERVATION DISTRICT.
 APPROVED: Stephen L. Fisher 9/13/84
 HOWARD SOIL CONSERVATION DISTRICT DATE



DEPARTMENT OF PUBLIC WORKS
 HOWARD COUNTY, MARYLAND
 R. M. Beniger GEN 9-19-84
 DIRECTOR OF PUBLIC WORKS DATE
 R. M. Beniger 9-5-84
 CHIEF - BUREAU OF ENGINEERING DATE

APR ASSOCIATES, INC.
 LAND SURVEYORS AND ENGINEERS
 7427 HARFORD ROAD
 BALTIMORE, MARYLAND 21234

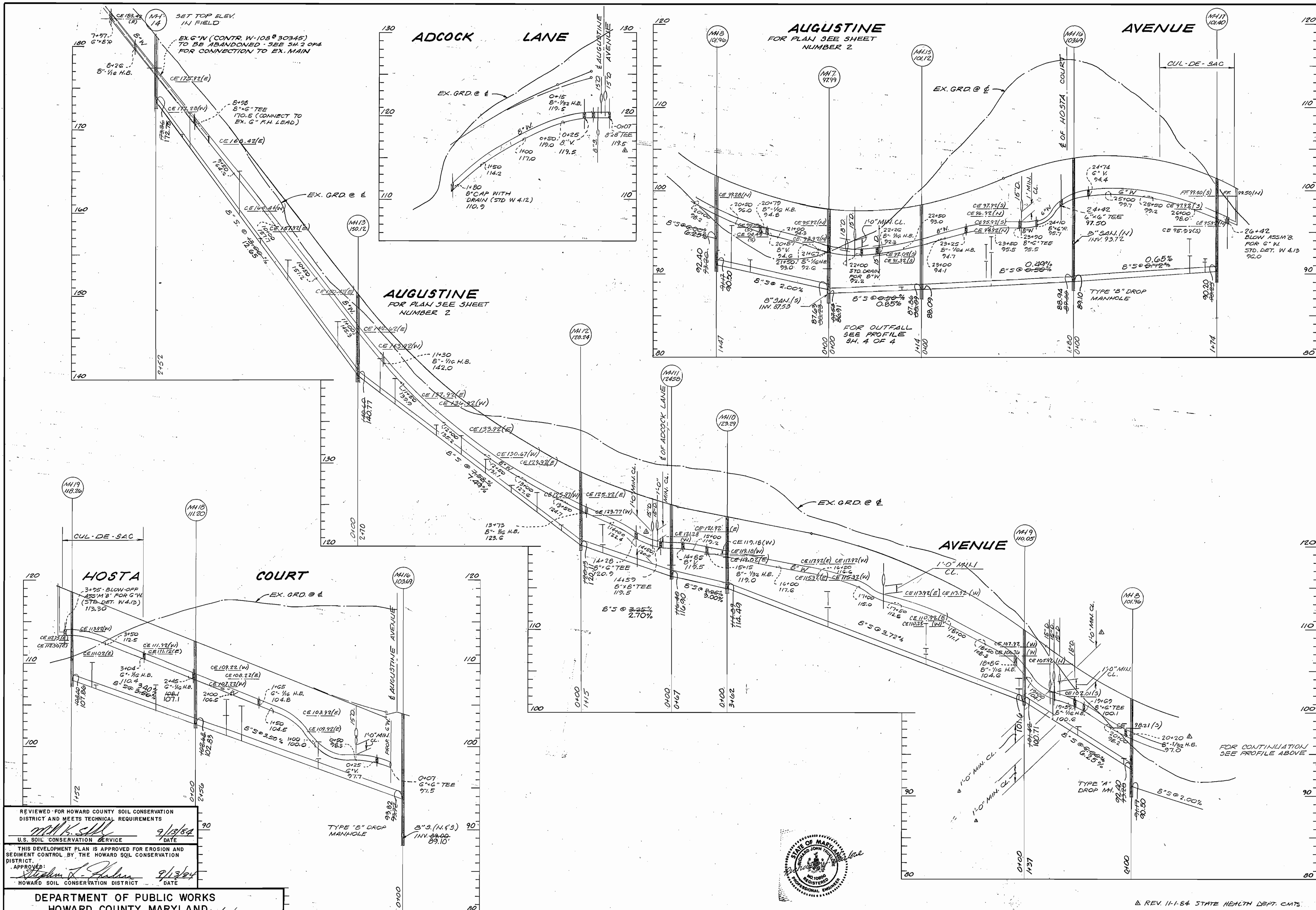
CONTRACT NO. 14-1256-D

PLAN OF WATER AND SEWER MAINS

MOUNT AUGUSTINE ELECTION DISTRICT NO. 1 ELKRIDGE

DRAWING NO. 3 OF 4
 SCALE: PLAN 1" = 50', PROFILE 1" = 5', VERT. 1" = 5'

1256/4 WS



REVIEWED FOR HOWARD COUNTY SOIL CONSERVATION DISTRICT AND MEETS TECHNICAL REQUIREMENTS
 M.K.S. 9/13/84
 U.S. SOIL CONSERVATION SERVICE DATE
 THIS DEVELOPMENT PLAN IS APPROVED FOR EROSION AND SEDIMENT CONTROL BY THE HOWARD SOIL CONSERVATION DISTRICT.
 APPROVED: Stephen L. Fisher 9/13/84
 HOWARD SOIL CONSERVATION DISTRICT DATE

DEPARTMENT OF PUBLIC WORKS
 HOWARD COUNTY, MARYLAND
 Director of Public Works DATE
 Chief - Bureau of Engineering DATE
 Chief - Bureau of Utilities DATE

APR ASSOCIATES, INC.
 LAND SURVEYORS AND ENGINEERS
 7427 HARFORD ROAD
 BALTIMORE, MARYLAND 21234

CONTRACT NO. 14-1256-D

PROFILE OF
 WATER AND SEWER MAINS

MOUNT AUGUSTINE
 ELECTION DISTRICT NO. 1
 ELKRIDGE

DRAWING NO. 4 OF 4
 SCALE: HORIZ. 1"=50' VERT. 1"=5'
 DES. BY: DRN. B. CKD. B.



REV. 11-1-84 STATE HEALTH DEPT. CMTS.