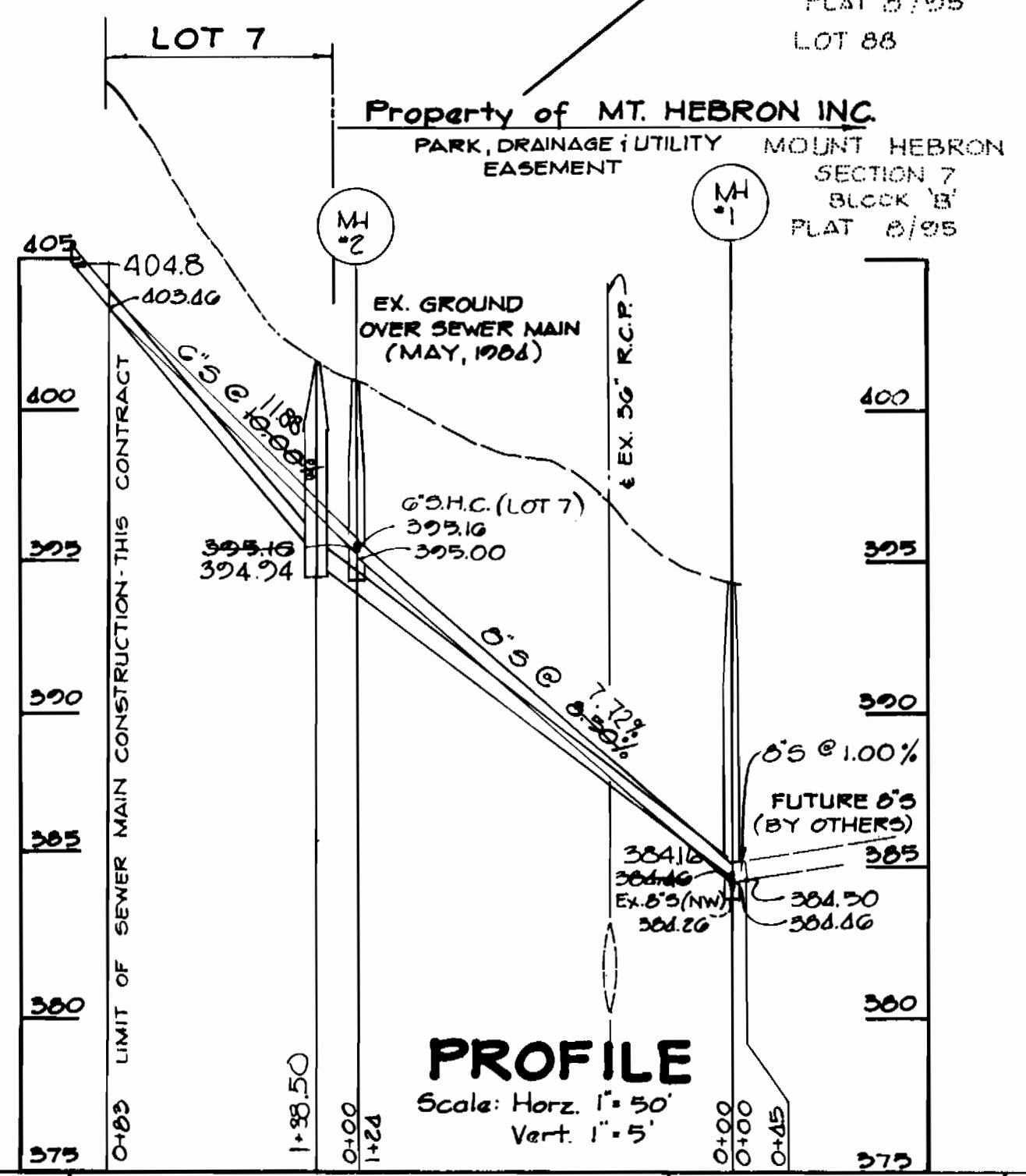
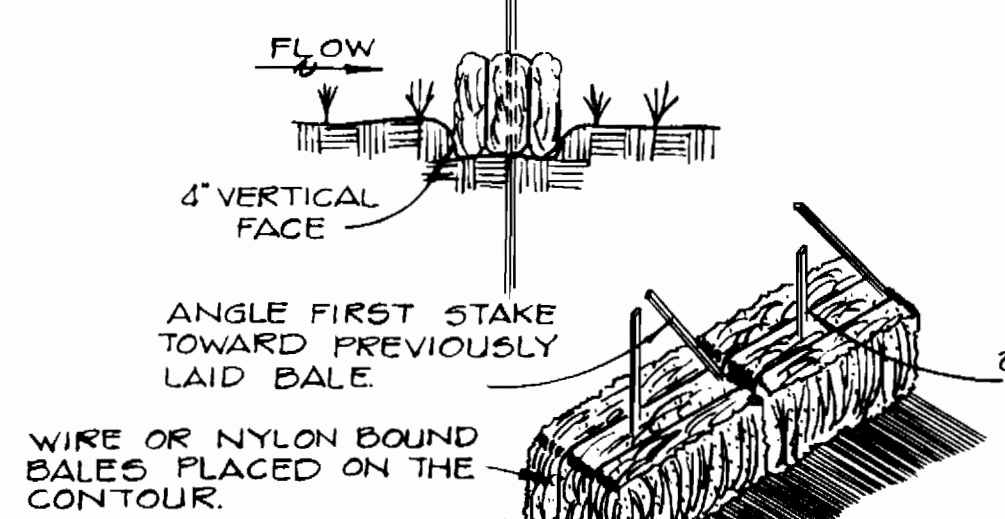


TYPE OF BUILDINGS:	2
NUMBER OF PARCELS:	2
NUMBER OF WATER HOUSE CONNS.:	2
DRAINAGE AREA:	PATAPSCO

GENERAL NOTES

- APPROXIMATE LOCATION OF EXISTING MAINS ARE SHOWN. THE CONTRACTOR SHALL TAKE ALL NECESSARY PRECAUTIONS TO PROTECT EXISTING MAINS AND SERVICES AND MAINTAIN UNINTERRUPTED SUPPLY. ANY DAMAGE INCURRED SHALL BE REPAIRED IMMEDIATELY TO THE SATISFACTION OF THE ENGINEER AT THE CONTRACTOR'S EXPENSE.
- ALL HORIZONTAL CONTROLS ARE BASED ON MARYLAND STATE COORDINATES.
- ALL VERTICAL CONTROLS ARE BASED ON U.S.C. & G.S. DATUM.
- ALL PIPE ELEVATIONS SHOWN ARE INVERT ELEVATIONS.
- CLEAR ALL UTILITIES BY A MINIMUM OF 6". CLEAR ALL POLES BY 2'-0" MINIMUM OR TUNNEL AS REQUIRED. THE OWNER HAS CONTACTED THE UTILITY COMPANIES AND HAS MADE ARRANGEMENTS FOR BRACING OF POLES AS SHOWN ON DRAWINGS. IN THE EVENT THE CONTRACTOR'S WORK REQUIRES THE BRACING OF ADDITIONAL POLES, ANY COST INCURRED BY THE OWNER FOR THE BRACING OF ADDITIONAL POLES OR DAMAGES SHALL BE DEDUCTED FROM MONEY OWED CONTRACTOR. THE CONTRACTOR SHALL COORDINATE WITH THE UTILITY COMPANIES TO SCHEDULE THE BRACING OF POLES.
- ALL MANHOLES SHALL BE 4'-0" INSIDE DIAMETER UNLESS OTHERWISE NOTED.
- CONTRACTOR SHALL LOCATE EXISTING UTILITIES A MINIMUM OF TWO(2) WEEKS IN ADVANCE OF CONSTRUCTION OPERATIONS IN THE VICINITY OF PROPOSED UTILITIES AT HIS OWN EXPENSE.
- CONTRACTOR SHALL NOTIFY THE FOLLOWING UTILITIES OR AGENCIES AT LEAST FIVE(5) WORKING DAYS BEFORE STARTING WORK SHOWN ON THESE PLANS:
 BALTIMORE GAS & ELECTRIC CO. - CONTRACTOR SERVICES 561-2585
 BALTIMORE GAS & ELECTRIC CO. - UNDERGROUND DAMAGE CONTROL 234-5621
 BALTIMORE GAS & ELECTRIC CO. - TROUBLE SHOOTING 298-9013
 "MISS UTILITY" 1-559-0100
 CHESAPEAKE & POTOMAC TELEPHONE CO. 725-9976
 BUREAU OF UTILITIES, HOWARD COUNTY DEPT. OF PUBLIC WORKS 992-2366
- TREES & SHRUBS ARE TO BE PROTECTED FROM DAMAGE TO MAXIMUM EXTENT. TREES AND SHRUBS LOCATED WITHIN THE CONSTRUCTION STRIP ARE NOT TO BE REMOVED OR DAMAGED BY THE CONTRACTOR.
- CONTRACTOR SHALL REMOVE TREES, STUMPS AND ROOTS ALONG THE LINE OF EXCAVATION AS DIRECTED BY THE ENGINEER. PAYMENT FOR SUCH REMOVAL SHALL BE INCLUDED IN THE UNIT PRICE BID FOR THE CONSTRUCTION OF THE MAIN.
- PLACE REGULATION MEN WORKING AND WARNING SIGNS AS REQUIRED TO COMPLY WITH MARYLAND STATE HIGHWAY ADMINISTRATION MANUAL OF TRAFFIC CONTROL FOR HIGHWAY CONSTRUCTION AND MAINTENANCE OPERATION.
- ALL WATER HOUSE CONNECTIONS SHALL BE FOR AN INSIDE METER SETTING.
- THE CONTRACTOR SHALL NOT OPERATE ANY WATER MAIN VALVES ON THE EXISTING SYSTEM.
- ALL SEWER MAINS SHALL BE C.S.P.X., V.C.P.X., A.C.P. CLASS 2400 OR P.V.C. UNLESS OTHERWISE NOTED.
- THE CONTRACTOR SHALL PROVIDE A JOINT IN ALL SEWER MAINS WITHIN 2'-0" OF EXTERIOR MANHOLE WALL.
- MANHOLES SHOWN WITH 12" AND 16" WALLS ARE BRICK MANHOLES ONLY.
- WATER MAINS AND WATER HOUSE CONNECTION LINES MUST BE PLACED SO AS TO HAVE AT LEAST ONE(1) FOOT SEPARATION FROM THE SEWER MAIN OR SEWER HOUSE CONNECTION AS THEY PASS ABOUT IT.
- FOR ALL COPPER WATER HOUSE CONNECTIONS UTILIZE FLARED TYPE FITTINGS ONLY.
- MANHOLES DESIGNATED "W.T." IN PLAN & PROFILE SHALL HAVE WATERTIGHT FRAME & COVERS, STANDARD DETAIL S145. WHERE WATERTIGHT MANHOLE & COVER IS USED, SET TOP OF FRAME 1'-6" ABOVE FINISHED GRADE UNLESS OTHERWISE NOTED ON THE DRAWINGS.
- FOR DETAILS NOT SHOWN ON THE DRAWINGS, AND FOR MATERIALS AND CONSTRUCTION METHODS, USE HOWARD COUNTY DESIGN MANUAL, VOLUME III, STANDARD SPECIFICATIONS AND DETAILS FOR CONSTRUCTION. THE CONTRACTOR SHALL HAVE A COPY OF VOLUME III ON THE JOB.
- WHERE TEST PITS HAVE BEEN MADE ON EXISTING UTILITIES, THEY ARE NOTED BY THE SYMBOL AT THE LOCATION OF THE TEST PITS. A NOTE OR NOTES CONTAINING THE RESULTS OF THE TEST PIT OR PITS IS INCLUDED ON THE DRAWINGS. EXISTING UTILITIES IN THE VICINITY OF THE PROPOSED WORK FOR WHICH TEST PITS HAVE NOT BEEN DUG SHALL BE LOCATED BY THE CONTRACTOR TWO WEEKS IN ADVANCE OF CONSTRUCTION OPERATIONS AT HIS OWN EXPENSE.

+	HI	-	ELEVATION	DESCRIPTION
			377.80	B.M.#10
2.41	402.41	18.21	384.16	INVERT 51ST M.H.#2
		5.35	397.17	TOP CUT NUB STR. #200
			397.16	CUT SHEET
5.40	406.83	8.50	404.88	TOP PROP. PIPE
4.00	410.85	4.00	410.85	TOP GRADE AT CONT.#8
		6.50	404.8	INVERT AT CONT.#8



ITEM	ESTIMATED	AS-BUILT	SUPPLIER
6" SEWER	120 L.F.	138.5	CERTAINTEED
6" S.H.C.	23 L.F.	118.0	"
3/4" W.H.C.	70 L.F.	33.0	"
MANHOLE	2 EA.	1.0	ATLANTIC PRAE EAST

WATER AND SEWER MAIN EXTENSION
 CONTRACT NO. 14-1254-D
 MOUNT HEBRON
 LOTS 7 & 8
 RESUBDIVISION OF LOT 1-A

DEPARTMENT OF PUBLIC WORKS
 HOWARD COUNTY, MARYLAND

Director of Public Works: Robert M. ... 7-16-84
 Chief, Bureau of Engineering: ... 7-16-84
 Chief, Bureau of Utilities: ... 7-16-84
 Chief, Land Development Division: ... 7-16-84

FISHER, COLLINS, AND CARTER, INC.
 CONSULTING ENGINEERS AND LAND SURVEYORS
 8388 COURT AVENUE
 ELLICOTT CITY, MARYLAND 21043
 461-2855

TERRILL A. FISHER DATE

DES: D.B.S.				
DRN: D.B.S.				
CHK: T.A.F.				
DATE:	BY:	NO.	REVISION	DATE

PLAN, PROFILE AND DETAILS
WATER AND SEWER MAINS

600' SCALE MAP NO. _____ BLOCK NO. _____

MOUNT HEBRON
 LOTS 7 & 8
 RESUBDIVISION OF LOT 1-A
 CONTRACT NO. 14-1254-D
 SECOND ELECTION DISTRICT
 HOWARD COUNTY, MARYLAND

SCALE AS SHOWN
 SHEET 1 OF 1