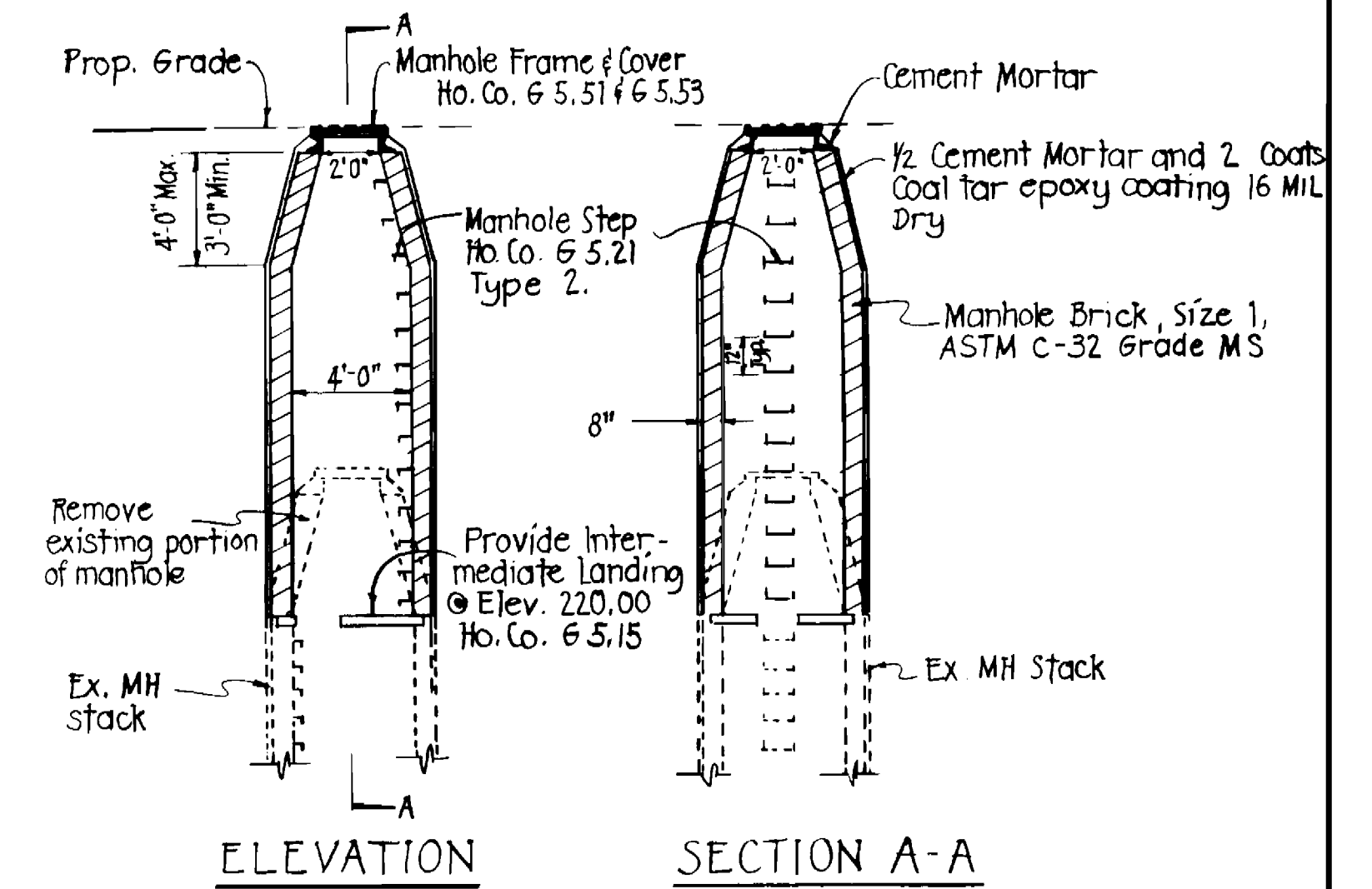


LOCATION MAP



MANHOLE EXTENSION DETAIL, (MH-1916)  
NO SCALE

Sediment Control Measures will be implemented in accordance with Article No. 15 of the Specifications B with SITE DEVELOPMENT Plan 60P 84-234, Drawing 3 of 3 Sediment & Erosion Control.

REVIEWED FOR HOWARD SOIL CONSERVATION DISTRICT AND MEETS TECHNICAL REQUIREMENT.  
*[Signature]* 9-18-84  
 SIGNATURE DATE  
 US SOIL CONSERVATION SERVICE

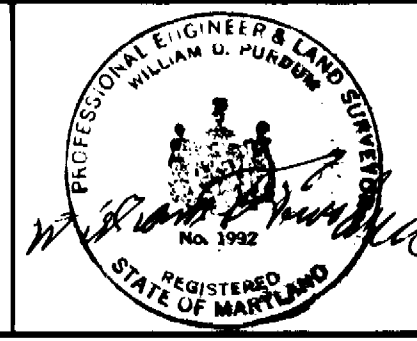
This Development Plan is approved for Soil Erosion and Sediment Control by the Howard Soil Conservation District.

APPROVED:  
*[Signature]* 9/18/84  
 HOWARD S.C.D. DATE

BRUNING AVE 1MS2

DEPARTMENT OF PUBLIC WORKS  
 HOWARD COUNTY, MARYLAND  
*[Signature]* 9-26-84  
 DIRECTOR OF PUBLIC WORKS DATE  
*[Signature]* 9/25/84  
 CHIEF, BUREAU OF UTILITIES DATE  
*[Signature]* 9-20-84  
 CHIEF, LAND DEVELOPMENT DIV. DATE

PURDUM & JESCHKE  
 ENGINEERS  
 1029 N. CALVERT ST.  
 BALTIMORE, MARYLAND



DES:					
DRN:					
CHK:					
DATE:	BY	NO.	REVISION	DATE	

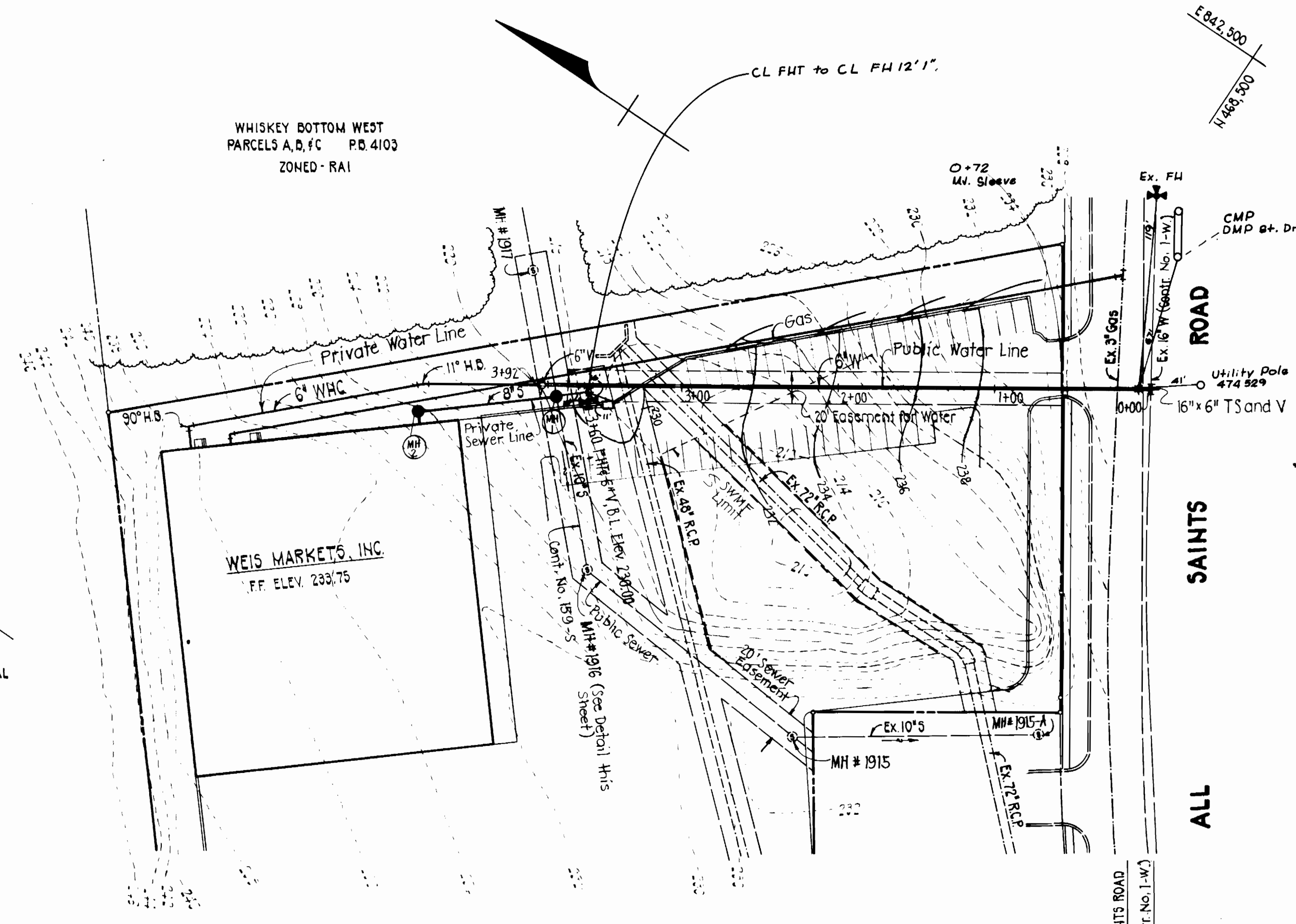
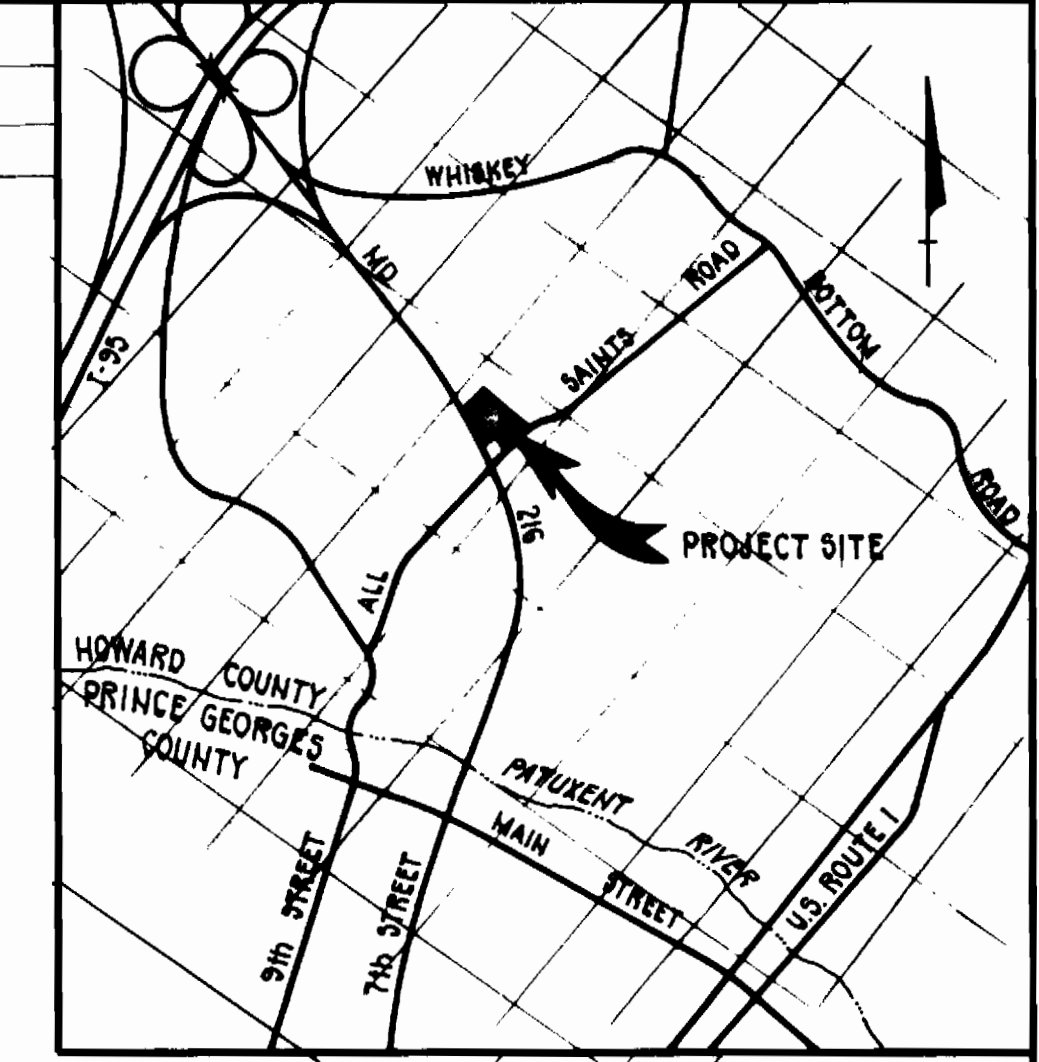
WATER MAIN EXTENSION  
 LOCATION MAP  
 DATE 60' SCALE MAP NO. BLOCK NO.

WEIS MARKETS, INC.  
 SIXTH ELECTION DISTRICT HOWARD COUNTY, MARYLAND  
 CONTRACT NO. 24-1253

SCALE  
 SHEET  
 1 of 2

QUANTITY		
ITEMS	ESTIMATED	AS BUILT
6" W	392 LF	382 A-P
16"x6" TS&V	1 unit	1 ea. 20.3.85
F.H.	1 unit	1 ea. 5'6"
6" Valve	2 unit	1 ea.
8" S.H.C.	79 LF	
MH	34 VF	24' 4" OH. P.
8" S	10 LF	10'

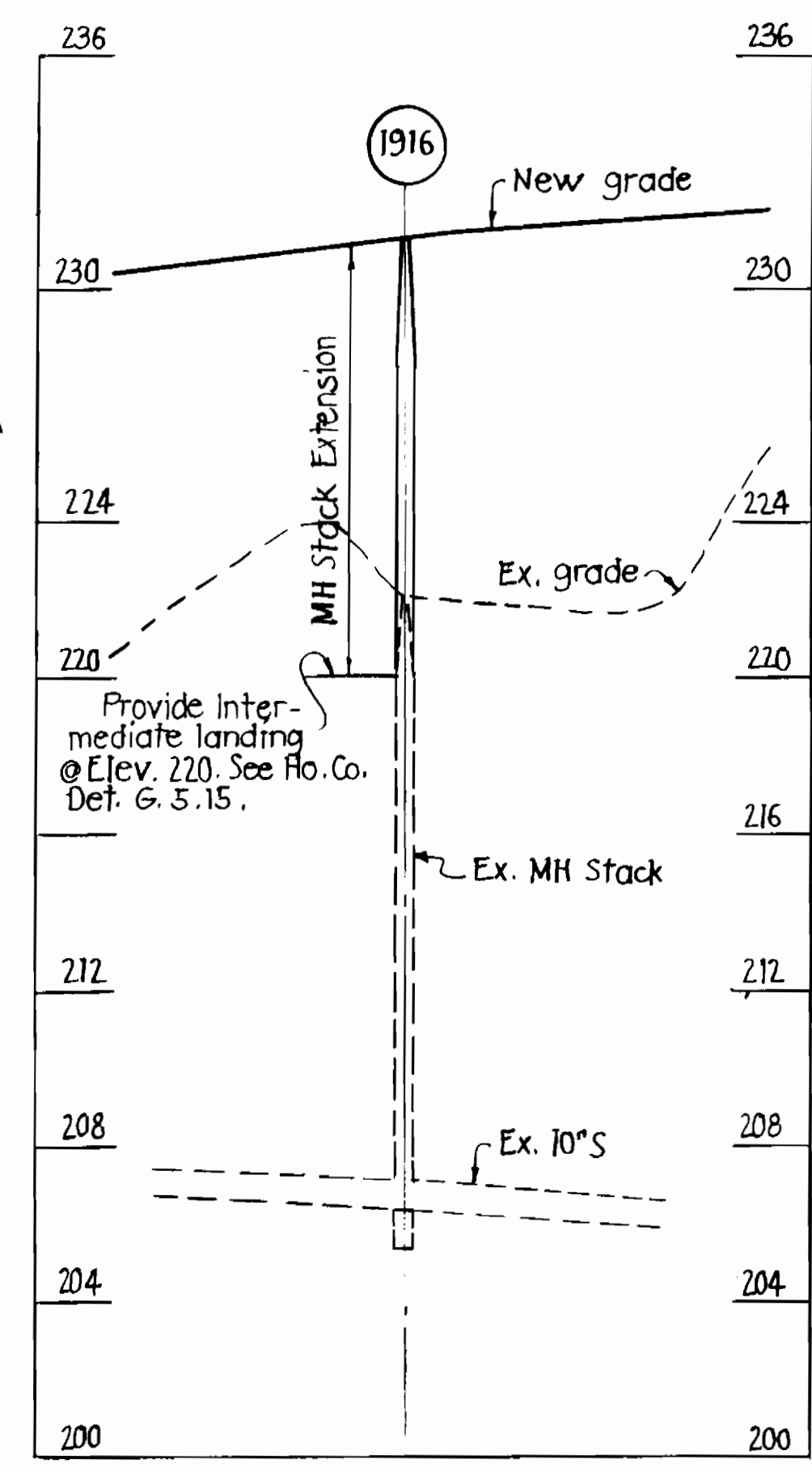
No. WHC - 1  
No. SHC - 1  
D.A. - SAVAGE.



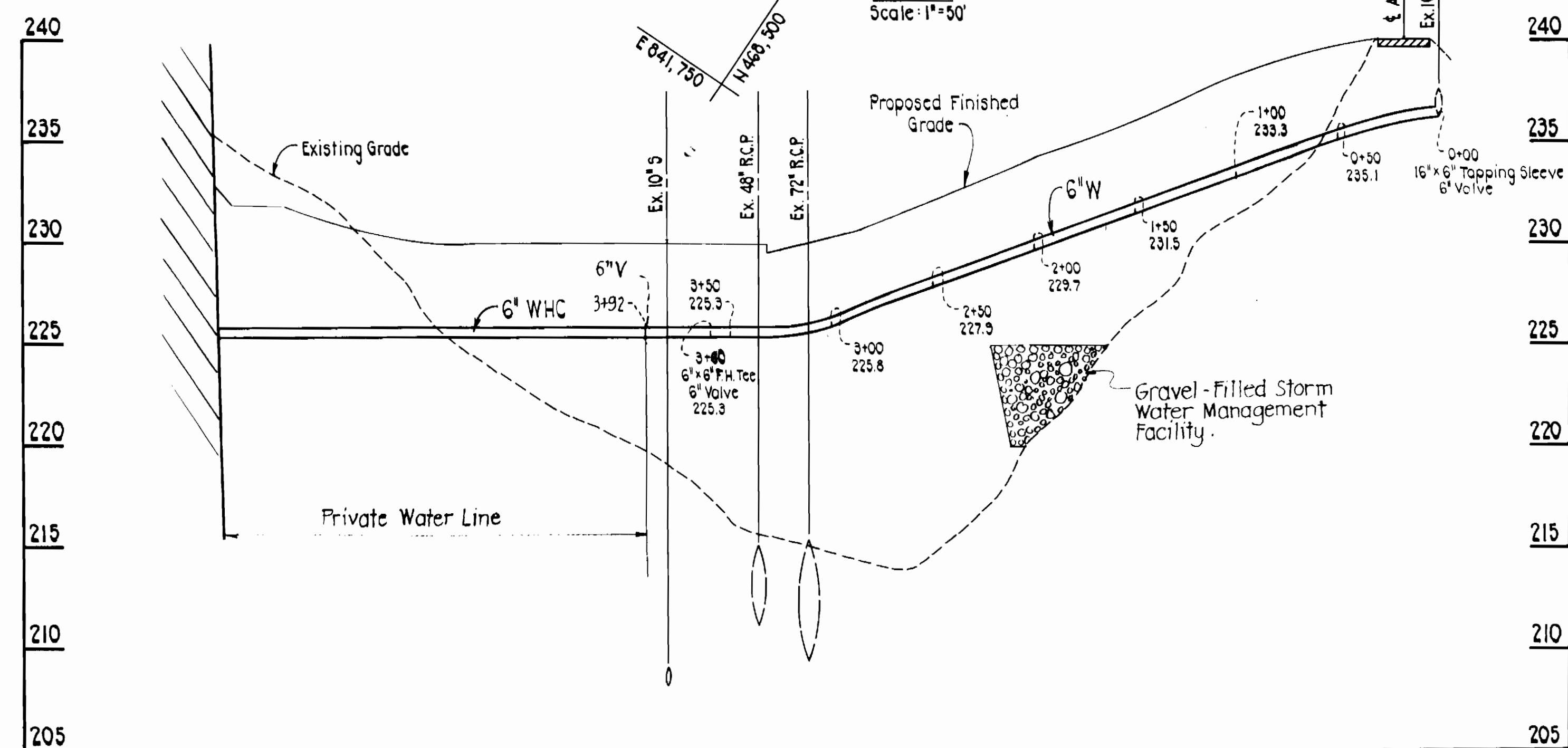
WHISKEY BOTTOM WEST  
PARCELS A,B,C P.B. 4103  
ZONED - RAI

WEIS MARKETS, INC.  
F.F. ELEV. 233.75

GEORGE REVITZ, ET AL  
438/350-460/666  
ZONED - R3C



EXISTING MH PROFILE  
SCALE Hor. 1"=40'  
Ver. 1"=4'



PROFILE  
Scale: Horiz. 1"=50'  
Vert. 1"=5'

**GENERAL NOTES**

1. Approximate location of existing mains are shown. The contractor shall take all necessary precautions to protect existing mains and services and maintain uninterrupted supply. Any damage incurred shall be repaired immediately to the satisfaction of the Engineer at the Contractor's expense.
2. All horizontal controls are based on Maryland State Coordinates.
3. All vertical controls are based on U.S.G.S. data.
4. All pipe elevations shown are invert elevations.
5. Clear all utilities by a minimum of 6". Clear all poles by 2'-0" minimum or tunnel as required. The owner has contacted the utilities companies and has made arrangements for bracing of poles as shown on the drawings. In the event the contractor's work requires the bracing of additional poles, any cost incurred by the owner for the bracing of additional poles or damages shall be deducted from money owed the contractor. The contractor shall coordinate with the utility companies to schedule the bracing of the poles.
6. For details not shown on the drawings, and for materials and construction methods, use Howard County Design Manual, Volume IV, Standard Specifications and Details for Construction. The contractor shall have a copy of Volume IV on the job.
7. Where test pits have been made on existing utilities, they are noted by the symbol  $\square$  at the location of the test pit. A note or notes containing the results of the test pit or pits is included on the drawings. Existing utilities in the vicinity of the proposed work for which test pits have been dug shall be located by the contractor two weeks in advance of construction operations at his own expense.
8. Contractor shall notify the following utilities or agencies at least five working days before starting work shown on these plans:  
State Highway Administration - 531-5533  
Baltimore Gas & Electric Co. - Contractor Services 561-2585  
Baltimore Gas & Electric Co. - Under Ground Damage Control - 234-5621  
Baltimore Gas & Electric Co. - Trouble Shooting - 298-9013  
Miss Utility - 1-559-0100  
Colonial Pipeline Co. - 795-1390  
Bureau of Utilities, Howard County Department of Public Works - 992-2366
9. Trees and shrubs are to be protected from damage to maximum extent. Trees and shrubs located within the construction strip are not to be removed or damaged by the contractor.
10. Contractor shall remove trees, stumps and roots along line of excavation. Payment for such removal shall be included in the unit price bid for construction of the main.
11. All water mains to be D.I.P. unless otherwise noted.
12. Tops of all water mains to have a minimum of 3'-1/2' cover unless otherwise noted.
13. Valves adjacent to tees shall be strapped to tees.
14. All fittings shall be buttressed or anchored with concrete in accordance with the Standard Details unless otherwise provided for on the drawings.
15. Fire hydrants shall be set to the bury line elevations shown on the drawings. All fire hydrants shall be strapped and buttressed with concrete in accordance with Standard Details. Soil around the fire hydrant shall be compacted in accordance with Section 1003 the Standard Specifications.
16. The contractor shall not operate any water main valves on the existing water system.
17. All water house connections shall be for inside meter settings.
18. All copper water house connections, utilize flared type fittings only.

Note: MH-2 shall  
BE HO. Co. 6.5.01.

Note: Provide Intermediate Landing @ Elev. 218 of  
MH-1, Ho. Co. 6.5.15  
PRIVATE SEWER PROFILE

SEDIMENT CONTROL MEASURES WILL BE IMPLEMENTED IN ACCORDANCE WITH ARTICLE NO. 15 OF THE SPECIFICATIONS AND SITE DEVELOPMENT PLAN SDP 94-234, DRAWING 2 OF 2 SEDIMENT AND EROSION CONTROL.

Reviewed for Howard Soil Conservation District and meets technical requirements.  
APPROVED: *James M. Hester* 9-18-84  
U.S. SOIL CONSERVATION SERVICE DATE

This Development Plan is approved for soil erosion and sediment control by the Howard Soil Conservation District.

APPROVED: *William J. Fisher* 9-18-84  
HOWARD SOIL CONSERVATION DISTRICT DATE

DEPARTMENT OF PUBLIC WORKS  
HOWARD COUNTY, MARYLAND

*Mark F. Nemy* 9-2-84  
DIRECTOR OF PUBLIC WORKS DATE

*William J. Fisher* 9-18-84  
CHIEF, BUREAU OF UTILITIES DATE

*William J. Fisher* 9-18-84  
CHIEF, LAND DEVELOPMENT DIV. DATE

PURDUM & JESCHKE  
ENGINEERS  
1029 N. CALVERT ST.  
BALTIMORE, MARYLAND

*William J. Fisher* 9-18-84  
CHIEF, LAND DEVELOPMENT DIV. DATE

DES:	
DRN:	
CHK:	
DATE:	
BY:	
NO.:	
REVISION:	
DATE:	

WATER MAIN EXTENSION  
PLAN AND PROFILE

600' SCALE MAP NO. BLOCK NO.

WEIS MARKETS, INC.  
SIXTH ELECTION DISTRICT  
HOWARD COUNTY, MARYLAND  
CONTRACT NO. 24-1253

3-7-85 REVISED PRIVATE SEWER PROFILE  
DATE DESCRIPTIONS ART  
By

SCALE SHEET 2 OF 2