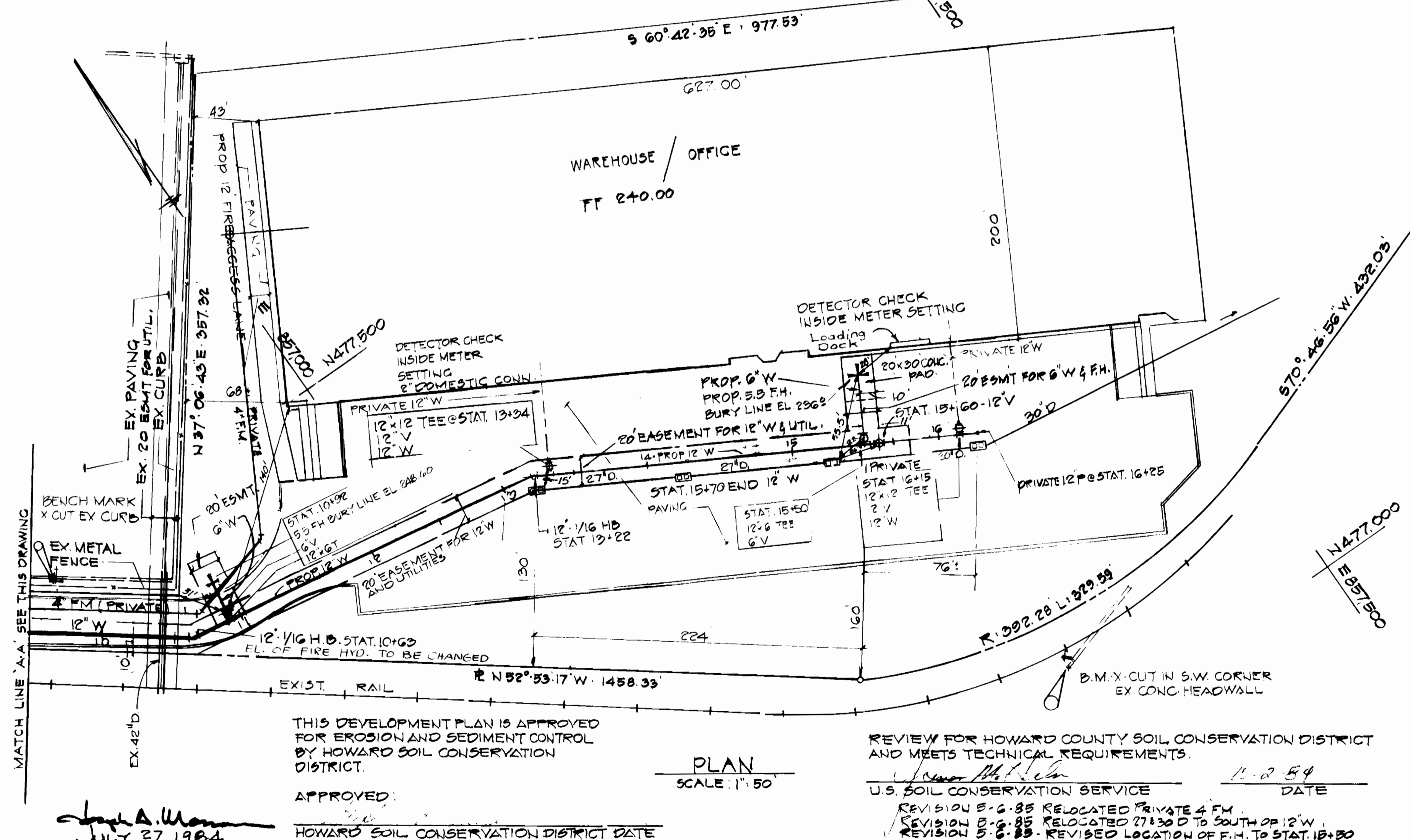
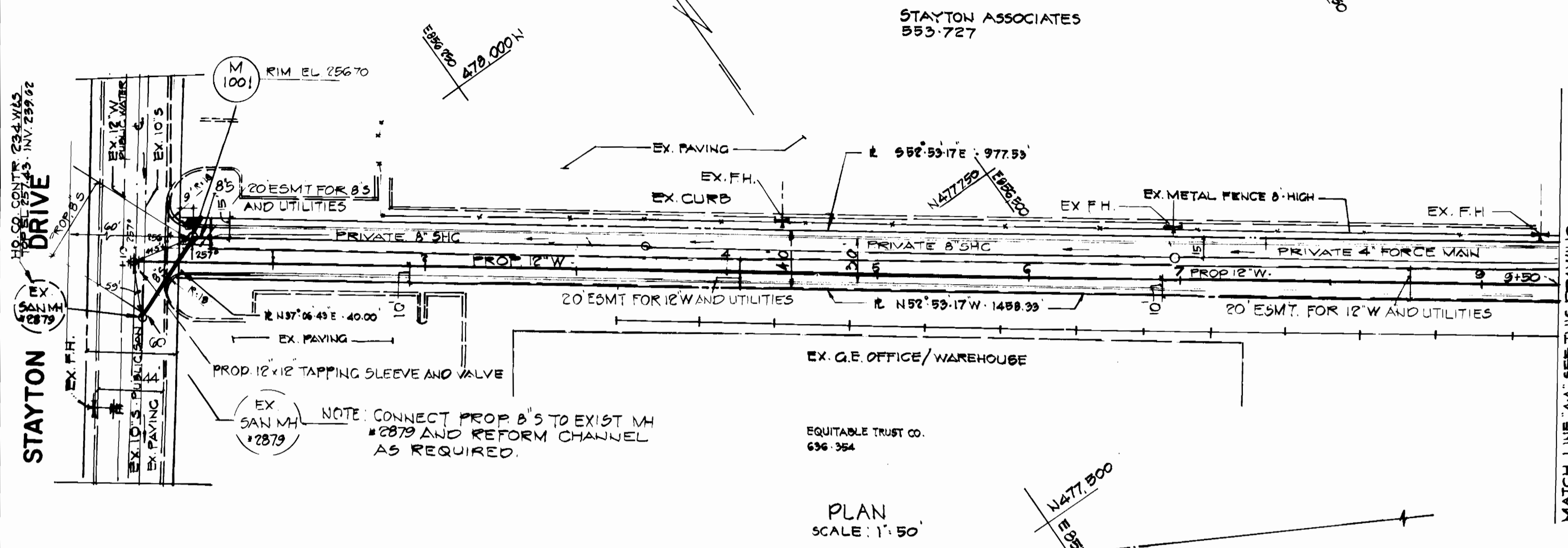


REFERENCE DRAWINGS: STAYTON DRIVE
 EX. 12" WATER: SEE CONTRACT 234 W & S (PUBLIC WATER MAIN)
 EX. 10" SEWER: SEE CONTRACT 234 W & S (PUBLIC SANITARY MAIN)



STV/LYON ASSOCIATES ENGINEERS
21 GOVERNOR S COURT BALTIMORE MD. 21207

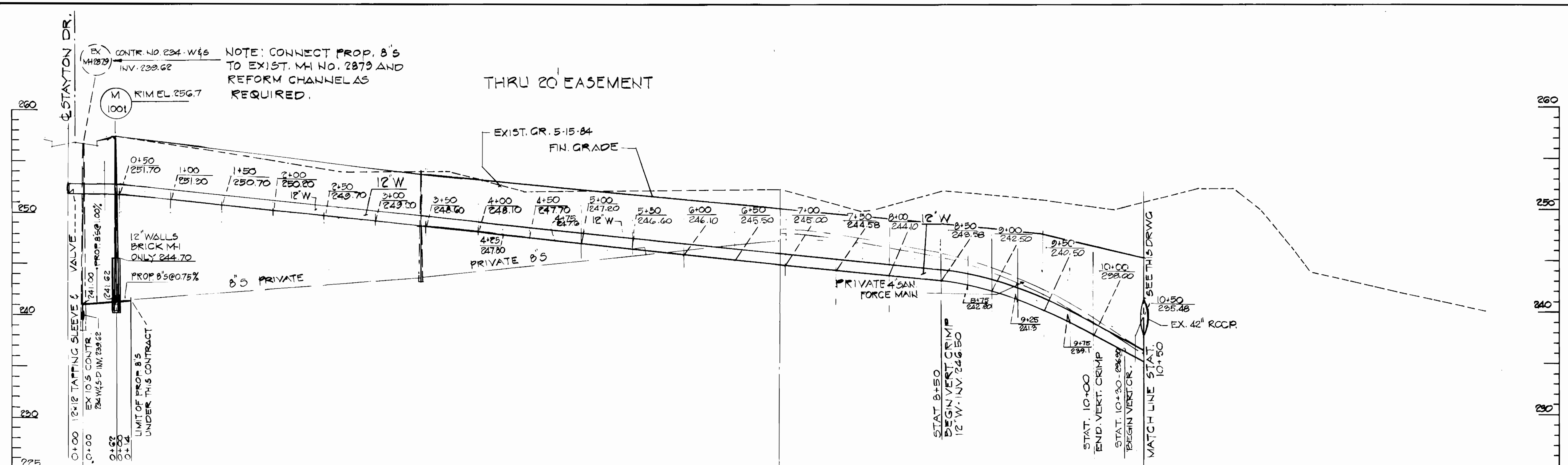
DEPARTMENT OF PUBLIC WORKS
HOWARD COUNTY MARYLAND
CHIEF BUREAU OF ENGINEERING DATE
CHIEF LAND DEVELOPMENT DIVISION DATE

CONTRACT NO. 24-1250-D
PLAN OF 12" WATER MAIN

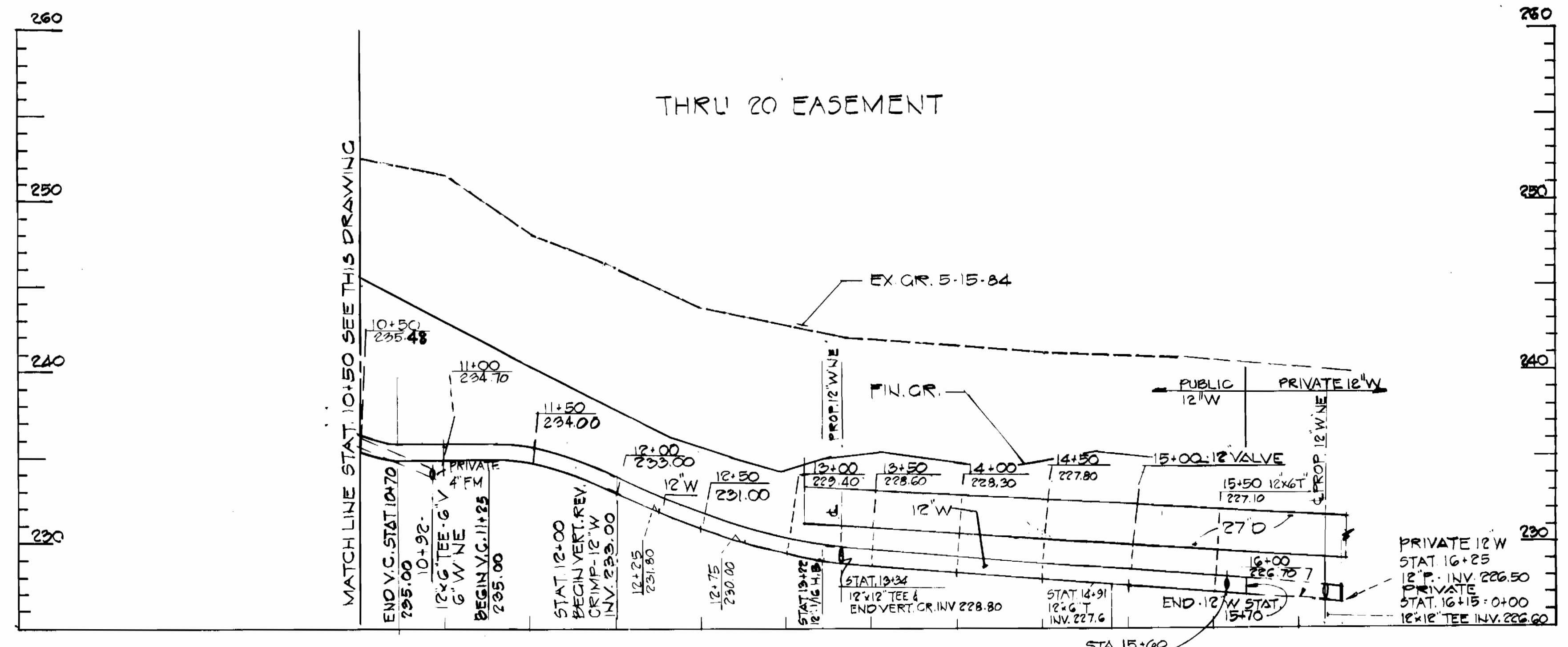
BALTIMORE WASHINGTON INDUSTRIAL PARK
BLOCK C 6TH. ELECTION DISTRICT

DRAWING NO. 1 OF 2
SCALE AS SHOWN

As Built, Oct. 85



PROFILE
SCALE HOR. 1"=50'
VERT. 1"=5'



PROFILE
SCALE: HOR. 1"=50'
VERT. 1"=5'

REVISED LENGTH OF 12" W TO STAT. 15+70 - 5-9-85
REVISED PROFILE TO CLEAR EX. 42" D STAT. 10+50 - 5-6-85
REVISED FIN. GR. STAT. 1+50 TO STAT. 16+25 - 5-6-85

STV LYON ASSOCIATES
ENGINEERS
21 GOVERNOR S COURT BALTIMORE MD. 21207

DEPARTMENT OF PUBLIC WORKS
HOWARD COUNTY MARYLAND
DIRECTOR OF PUBLIC WORKS
CHIEF BUREAU OF UTILITIES
CHIEF BUREAU OF ENGINEERING DATE
CHIEF LAND DEVELOPMENT DIVISION DATE

CONTRACT NO. 24-1250-D

PROFILE OF 12" WATER MAIN

BALTIMORE WASHINGTON INDUSTRIAL
BLOCK C PARK PARCEL B
6TH ELECTION DISTRICT

DRAWING NO. 2 OF 2
SCALE AS SHOWN