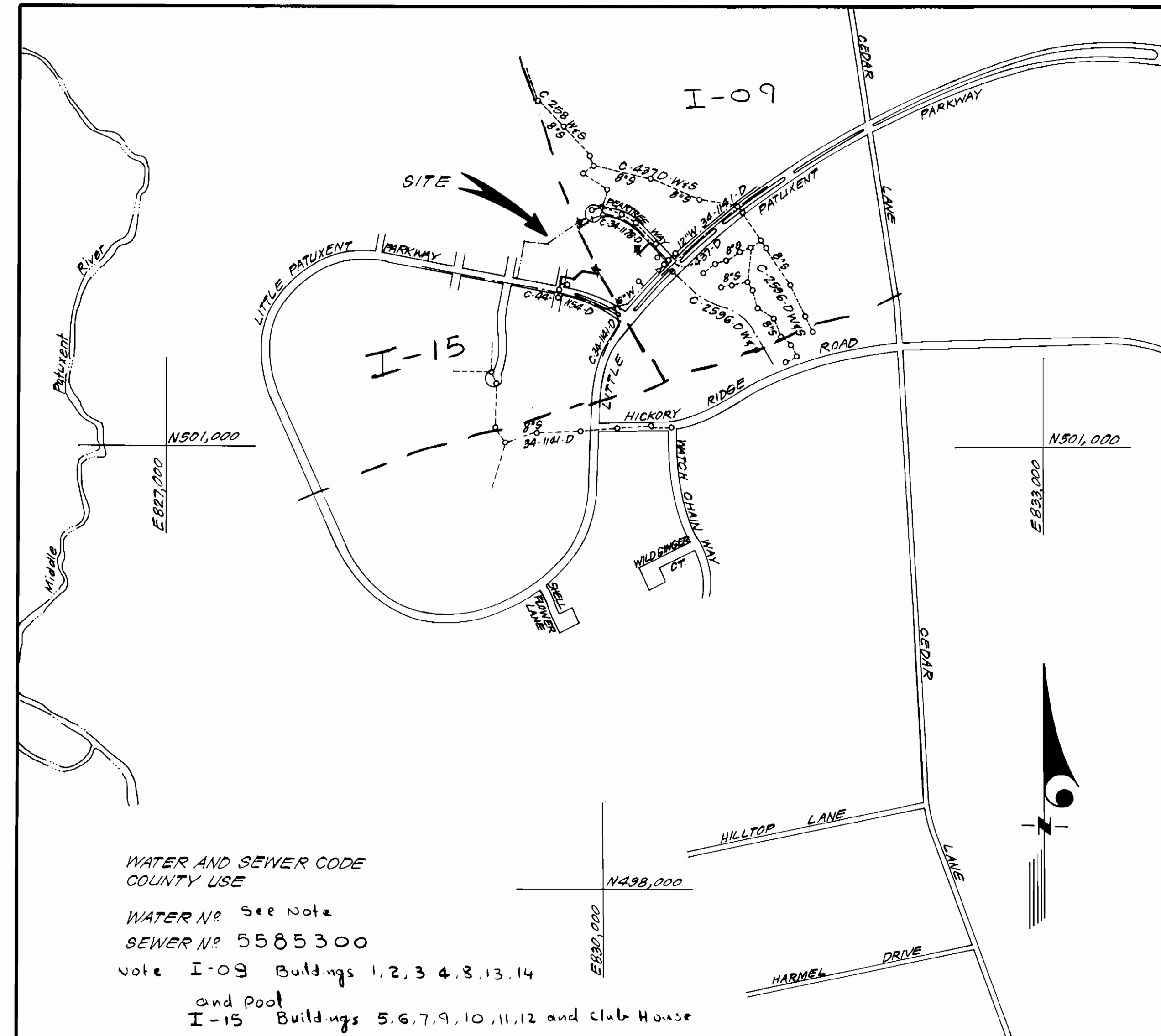


TYPE OF BUILDING	Apartments
NUMBER OF UNITS	168
NUMBER OF WHC'S	10
DRAINAGE AREA	Middle Patuxent



WATER AND SEWER CODE
COUNTY USE

WATER No. See Note
SEWER No. 5585300

Note I-09 Buildings 1, 2, 3, 4, 8, 13, 14
and Pool
I-15 Buildings 5, 6, 7, 9, 10, 11, 12 and Club House

VICINITY MAP

GENERAL NOTES

- Approximate location of existing mains are shown. The contractor shall take all necessary precautions to protect existing mains and services and maintain uninterrupted supply. Any damage incurred shall be repaired immediately to the satisfaction of the Inspector, at the contractor's expense.
- All horizontal controls are based on Maryland State Coordinates.
- All vertical controls are based on U.S.G.S. Datum.
- All pipe elevations shown are invert elevations.
- Clear all utilities by a minimum of 6" clear all poles by 2'-0" minimum or tunnel as required. Any cost incurred to the contractor for tunneling or bracing at poles shall be included in prices bid.
- For details not shown on the drawings use Howard County Standard Details.
- For materials and construction methods use Howard County Standard Specifications.
- Contractor shall locate existing utilities a minimum of two (2) weeks in advance of construction operations in the vicinity of proposed utilities at his own expense.
- Contractor shall notify the following utilities or agencies at least five (5) working days before starting work shown on these plans:
 - State Highway Administration - 531-5533
 - Baltimore Gas & Electric Company - Underground Electric Distribution Customer Service - 685-0123
 - Baltimore Gas & Electric Company - Underground Gas Distribution Customer Service - 685-0123
 - Engineering - Damage Control - 234-5621
 - Miss Utility - 1-559-0100
 - Chesapeake & Potomac (C & P) Telephone Company - 725-9976
 - American Telephone and Telegraph - Cable Location Division - 393-3553
 - Colonial Pipeline Company - 781-4641
 - Bureau of Utilities Howard County - 992-2366
- Trees are to be protected from damage to maximum extent. Trees located within the construction strip are not to be removed or damaged by the contractor.
- Contractor shall remove trees, stumps, and roots along line of excavation as directed by the Inspector. Payment for such removal shall be included in the price bid.
- Place regulation "Men Working" and warning signs as required to comply with Maryland State Highway Administration Manual of Traffic Control for Highway Construction and Maintenance Operations.
- All water mains to be C.I.P. or D.I.P. unless otherwise noted.
- Top of all water mains to have a minimum of 3'-1/2' cover unless otherwise noted.
- Valves adjacent to trees shall be strapped to trees.
- Block all fittings with concrete.
- Bury line elevations on fire hydrants shall be set to the elevations shown on the drawings. All fire hydrants shall be strapped and buttressed with concrete in accordance with standard details. Soil around the fire hydrant to be compacted in accordance with Section 10.03 of the Standard Specifications.
- All water house connections shall be for an outside meter, setting See Spec. Prov. (44-1247-D) Std. Det. Leads for remote readings shall be run parallel to private WHC's 5' to side of WHC's.
- The contractor shall not operate any water main valves on the existing system.
- All sewer mains shall be C.S.P.X., V.C.P.X., P.V.C., or A.C.P. Class 2400 unless otherwise noted.
- The contractor shall provide a joint in all sewer mains within 2'-0" of exterior manhole wall.
- All manholes shall be 4'-0" inside diameter, unless otherwise noted.
- Water main and water house connection lines must have a minimum of one foot separation from the sanitary sewer and sewer house connections as they cross. Except at crossings, water and sewer lines shall have a minimum horizontal separation of 10'.
- For all Copper Water House Connections, utilize flared type fittings only.
- Provide full compaction of trench backfill in all areas under paving and sidewalks.

CONTRACT NO. 44-1247-D
VILLAGE OF HICKORY RIDGE
SECTION 3 AREA 6, PARCEL "N"
HOWARD COUNTY, MARYLAND
DEPARTMENT OF PUBLIC WORKS

QUANTITIES			
ITEM	ESTM'D	AS-BUILT	MATERIAL/SUPPLIER
8" W	504 L.F.	504 L.F.±1	GRIFFIN
F.H.	3 EA.	3 EA.	U.S. Pipe
1" WHC	17 L.F.	17 L.F.	Howell metals CO.
1 1/2" WHC	82 L.F.	82 L.F.	" " "
2" WHC	169 L.F.	169 L.F.±1	" " "
Meter Vault	2' 6 EA.	6 EA.	MDYER BROS. INC.
Meter Vault	1 1/2' 3 EA.	3 EA.	" " "
Meter Vault	1' EA.	1 EA.	" " "

Sediment Control Measures will be implemented in accordance with Article No. 15 of the Specifications B with Site Development Plan 84-254-C; Drawings 3 & 4 Sediment & Erosion Control.

REVIEWED FOR HOWARD SOIL CONSERVATION DISTRICT AND MEETS TECHNICAL REQUIREMENT.
 Signature: *John M. ...* DATE: 7-6-84
 U.S. SOIL CONSERVATION SERVICE

This Development Plan is approved for Soil Erosion and Sediment Control by the Howard Soil Conservation District.

APPROVED:
 Signature: *Stephen ...* DATE: 7-9-84
 Howard S.C.D.

COLUMBIA
VILLAGE OF HICKORY RIDGE
SECTION 3 AREA 6
PARCEL "N"

DEPARTMENT OF PUBLIC WORKS
HOWARD COUNTY, MARYLAND

Robert M. ... 7-9-84
DIRECTOR OF PUBLIC WORKS DATE

Robert M. ... 7-9-84
CHIEF, BUREAU OF UTILITIES DATE

Clark F. ... 7-9-84
CHIEF, BUREAU OF ENGINEERING DATE

William ... 7-9-84
CHIEF, LAND DEVELOPMENT DIV. DATE

CFS CLARK-FINEFROCK & SACKETT
ENGINEERS-PLANNERS-SURVEYORS

11315 LOCKWOOD DRIVE SILVER SPRING, MARYLAND 20904
(301) 593-3400



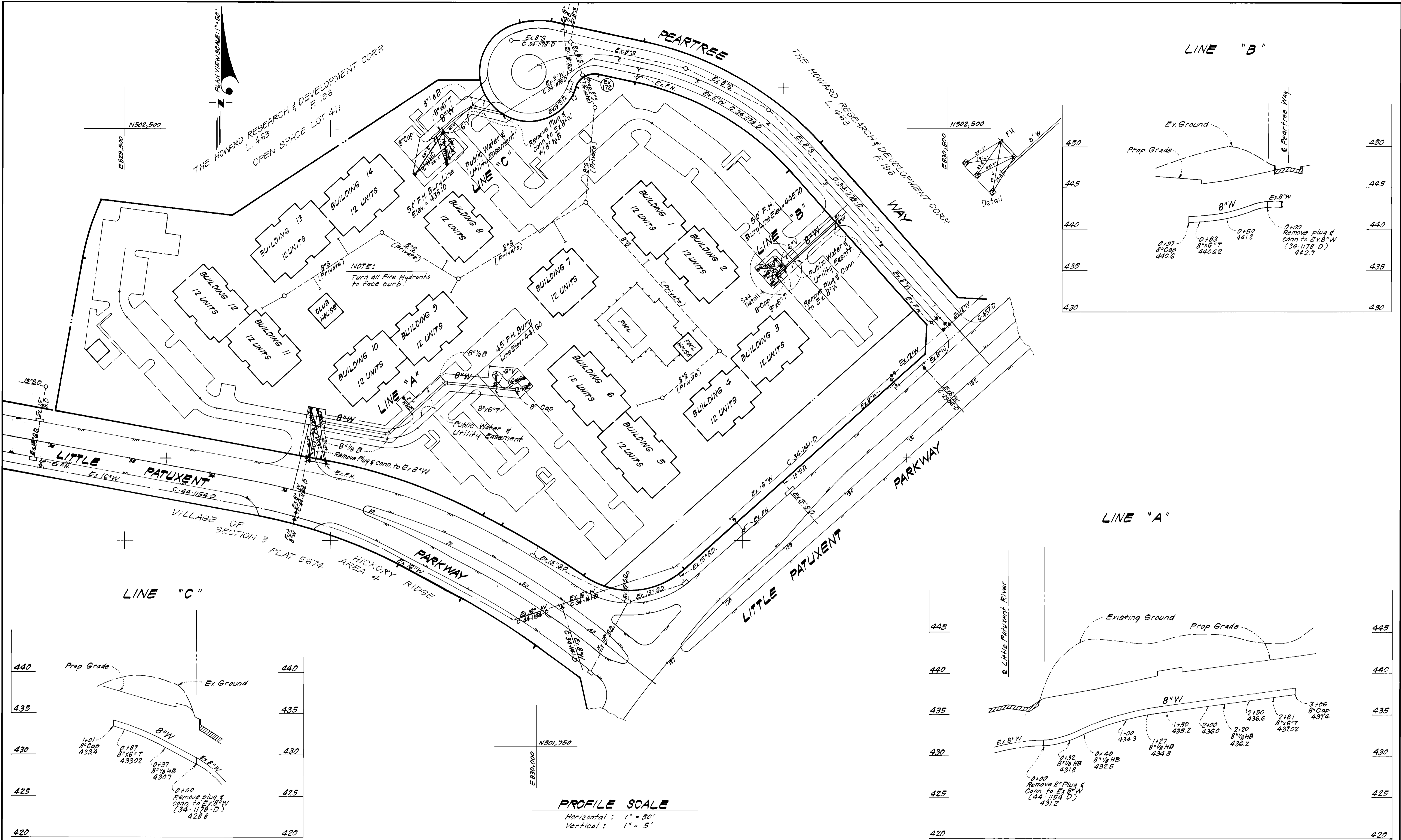
DES: C.K.G.			
DRN: V.L.B.			
CHK: C.K.G.			
DATE: 6/84	BY	NO.	REVISION

TITLE SHEET

600' SCALE MAP NO. 35 BLOCK NO.

COLUMBIA
VILLAGE OF HICKORY RIDGE
6TH ELECTION DISTRICT
CONTRACT NO. 44-1247-D

SCALE: 1" = 600'
SHEET 1 of 2



DEPARTMENT OF PUBLIC WORKS
 HOWARD COUNTY, MARYLAND

John F. Neuman 7-9-84
 DIRECTOR OF PUBLIC WORKS DATE

Robert M. Brinson 7-9-84
 CHIEF, BUREAU OF UTILITIES DATE

Mark S. ... 7-9-84
 CHIEF, LAND DEVELOPMENT DIV. DATE

CFE CLARK-FINEPROCK & SACKETT
 ENGINEERS - PLANNERS - SURVEYORS

11315 LOCKWOOD DRIVE SILVER SPRING, MARYLAND 20904
 (301) 593-3400



DES: C.K.G.			
DRN: Y.L.B.			
CHK: C.K.G.			
DATE: 6/84	BY NO.	REVISION	DATE

PLAN & PROFILES OF
 WATER MAIN

600' SCALE MAP NO. 35 BLOCK NO.

COLUMBIA
 VILLAGE OF HICKORY RIDGE
 6TH ELECTION DISTRICT
 CONTRACT NO. 44-1247-D

SCALE AS SHOWN
 SHEET 2 OF 2