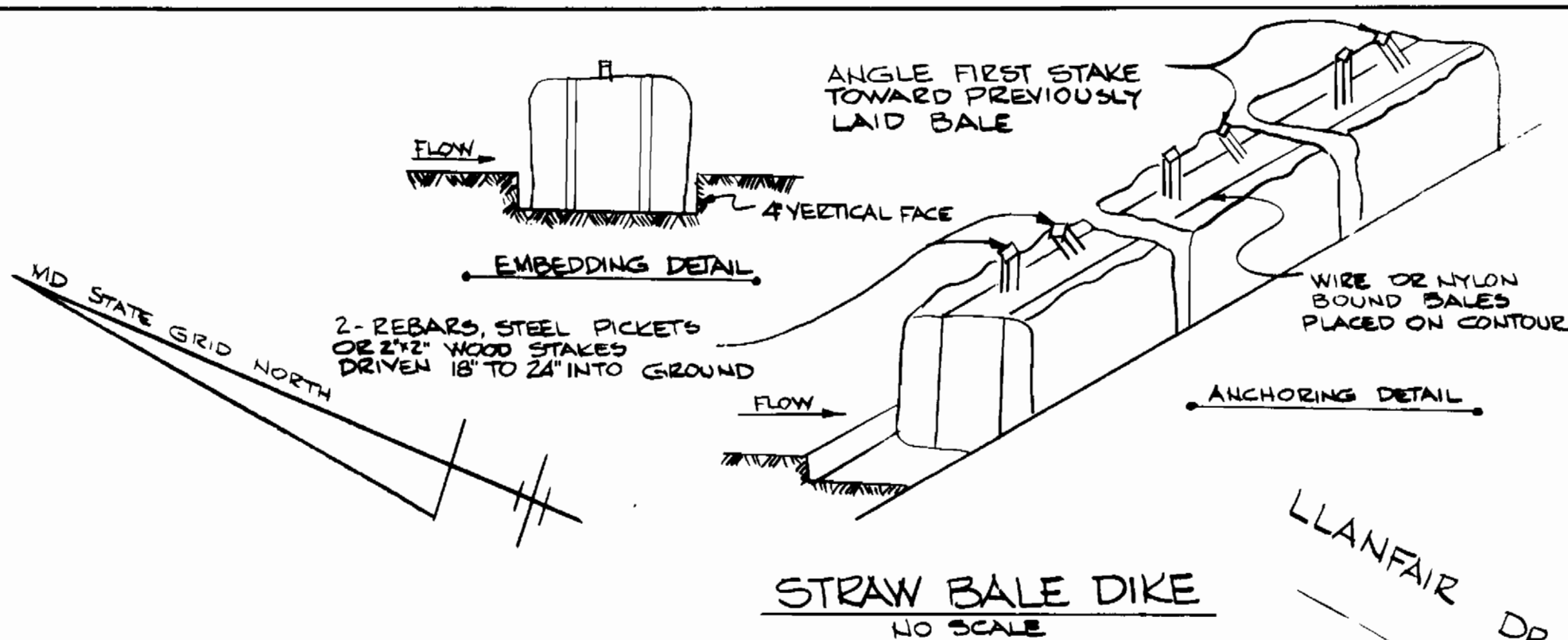


QUANTITIES			
ITEM	BID	AS-BUILT	MATERIAL/SUPPLIER
8" SAN SEWER	628 LF	618 LF	PVC 508-35 WATER WORKS INC. FINNSBURG, MD
6" S.H.C.	45 LF	32.5 LF	ASTM D3034 FINNSBURG, MD
1" WHC	43 LF	8 LF	K COPPER
3/4" WHC	50 LF	47 LF	K COPPER
SAN. MANHOLES	3	3 EA.	PROCEP CORP. ATLANTIC BRANCH 10124 FUNKSBURG, MD

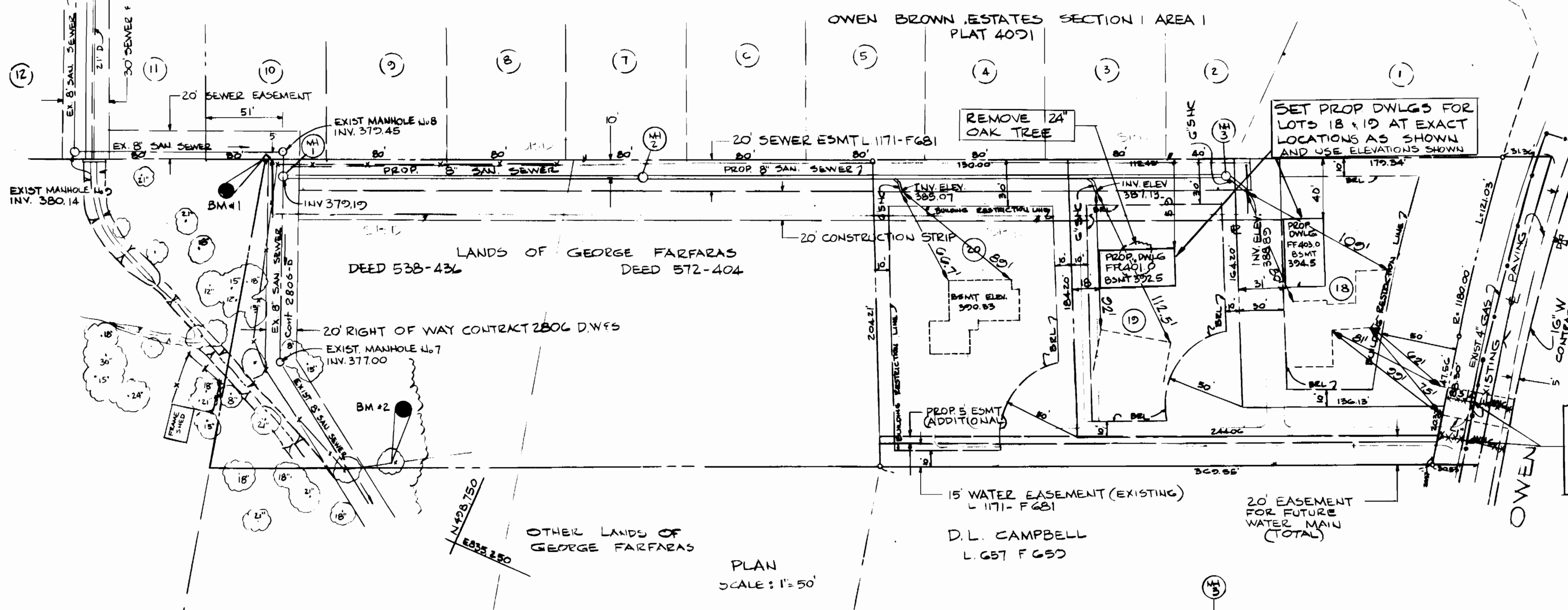
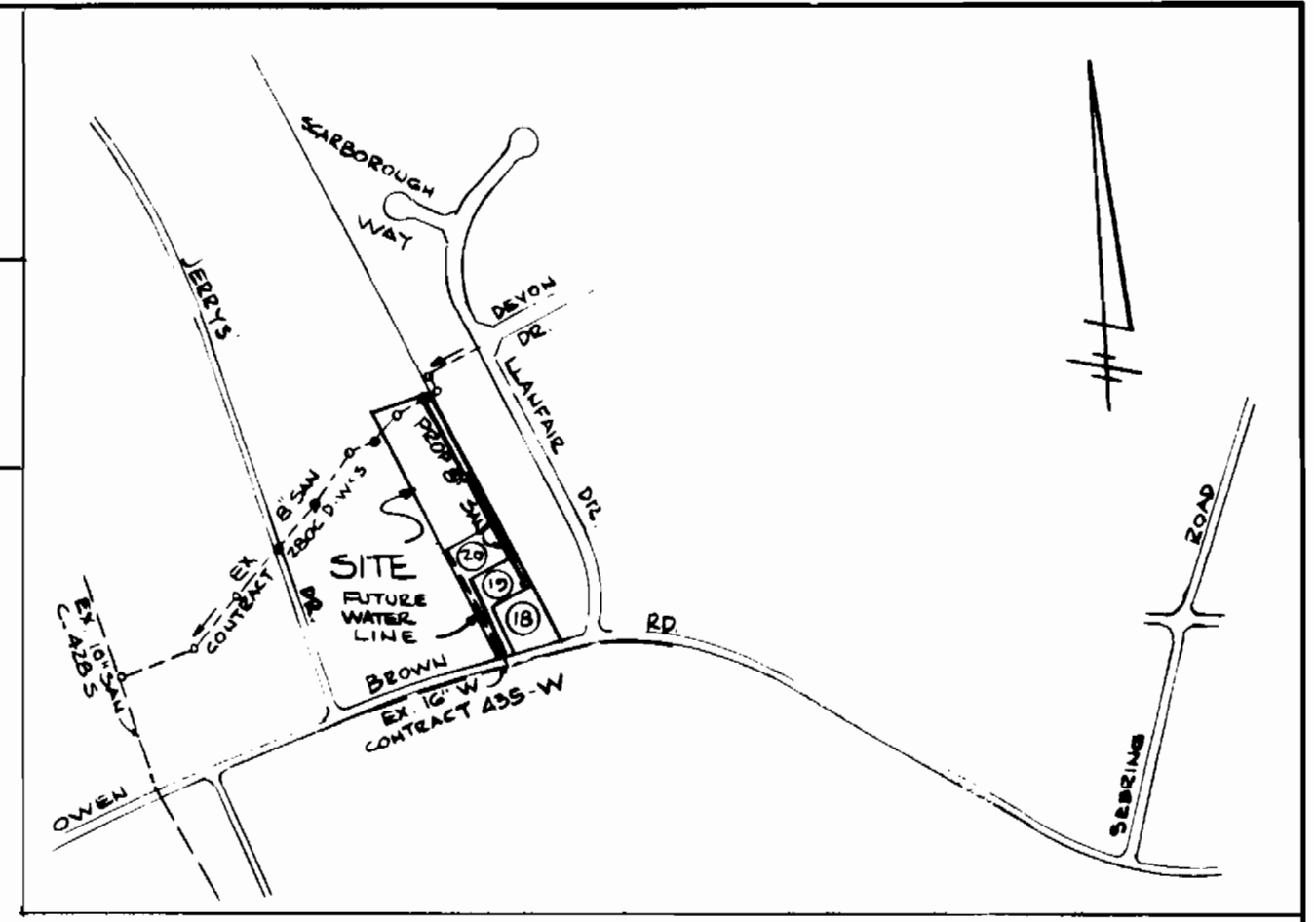


BM #1 ELEV. 390.12  
TOP OF CONCRETE MONUMENT

BM #2 ELEV. 384.22  
SMALL SPIKE IN 18 POPLAR TREE.

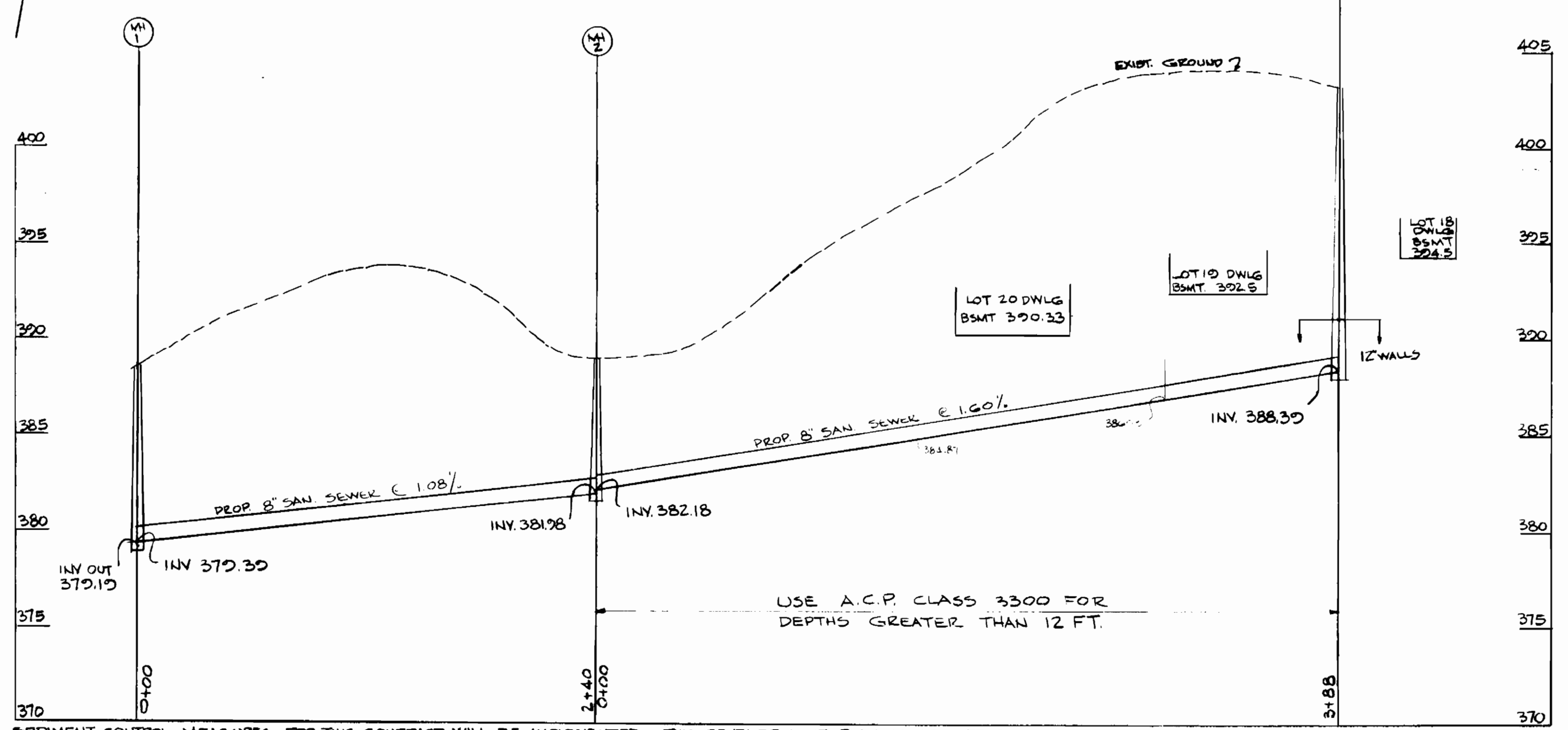
NUMBER OF UNITS 3  
TYPE OF BUILDINGS - SINGLE FAMILY DWLGS  
NUMBER OF WATER HOUSE CONNECTIONS 3  
NUMBER OF SEWER HOUSE CONNECTIONS 3  
DRAINAGE AREA - SAVAGE

SEWER CODE 532.5500  
WATER CODE E 30



- ### GENERAL NOTES
1. ALL WATER MAINS TO BE C.I.P., D.I.P. UNLESS OTHERWISE NOTED.
  2. TOP OF ALL WATER MAINS TO HAVE A MINIMUM A 3.5 FT COVER UNLESS OTHERWISE NOTED.
  3. ALL VALVES SHALL BE STRAPPED TO TREES IN ACCORDANCE WITH STANDARD DETAILS.
  4. BLOCK ALL FITTINGS WITH CONCRETE, SEE STANDARDS BOUND IN SPECIFICATIONS.
  5. ALL SANITARY SEWERS SHALL BE C.S.P.X, V.C.P.X, P.V.C. OR A.C.P. CLASS 2400 UNLESS OTHERWISE NOTED.
  6. THE CONTRACTOR SHALL PROVIDE A JOINT IN ALL SEWER MAINS WITHIN 2'-0" OF EXTERIOR MANHOLE WALL.
  7. ALL MANHOLES SHALL BE 4'-0" INSIDE DIAMETER, UNLESS OTHERWISE NOTED.
  8. APPROXIMATE LOCATIONS OF EXISTING MAINS ARE SHOWN. THE CONTRACTOR SHALL TAKE ALL NECESSARY PRECAUTIONS TO PROTECT EXISTING MAINS AND SERVICES AND MAINTAIN UNINTERRUPTED SUPPLY. ANY DAMAGE INCURRED SHALL BE REPAIRED IMMEDIATELY.
  9. ALL HORIZONTAL CONTROLS ARE BASED ON MARYLAND STATE COORDINATES.
  10. ALL VERTICAL CONTROLS ARE BASED ON U.S.G.S DATUM.
  11. ALL PIPE ELEVATIONS SHOWN ARE INVERT ELEVATIONS.
  12. CLEAR ALL UTILITIES BY A MINIMUM OF 6', CLEAR ALL POLES BY 2'-0" MINIMUM OR TUNNEL AS REQUIRED.
  13. FOR ALL STANDARD DETAILS SEE STANDARDS BOUND IN SPECIFICATIONS.
  14. CONTRACTOR SHALL LOCATE EXISTING UTILITIES IN ADVANCE OF CONSTRUCTION OPERATIONS IN THE VICINITY OF PROPOSED UTILITIES.
  15. CONTRACTOR SHALL NOTIFY THE FOLLOWING UTILITIES OR AGENCIES AT LEAST FIVE (5) DAYS BEFORE STARTING WORK SHOWN ON THESE PLANS:
    - STATE HIGHWAY ADMINISTRATION 531-5533
    - BALTIMORE GAS & ELECTRIC COMPANY - UNDERGROUND ELECTRIC DISTRIBUTION ENGINEERING - DAMAGE CONTROL 234-5691
    - BALTIMORE GAS & ELECTRIC COMPANY - UNDERGROUND GAS DISTRIBUTION ENGINEERING 350-0100
    - CHESAPEAKE AND POTOMAC TELEPHONE CO 725-9976
    - AMERICAN TELEPHONE AND TELEGRAPH - CABLE LOCATION DIVISION 301-393-3553
    - COLONIAL PIPELINE COMPANY 781-4641 - BUREAU OF UTILITIES 592-2366
  16. TREES ARE TO BE PROTECTED FROM DAMAGE TO MAXIMUM EXTENT. TREES LOCATED WITHIN THE CONSTRUCTION STRIP ARE NOT TO BE REMOVED OR DAMAGED BY THE CONTRACTOR.
  17. CONTRACTOR SHALL REMOVE TREES, STUMPS AND ROOTS ALONG LINE OF EXCAVATION AS DIRECTED BY THE ENGINEER. PAYMENT FOR SUCH REMOVAL SHALL BE INCLUDED IN THE UNIT PRICE BID FOR EXCAVATION AND BACKFILL FOR WATER AND SEWER MAINS.
  18. PLACE REGULATIONS 'MEN WORKING' AND WARNING SIGNS AS REQUIRED TO COMPLY WITH MARYLAND STATE HIGHWAY ADMINISTRATION MANUAL OF TRAFFIC CONTROL FOR HIGHWAY CONSTRUCTION AND MAINTENANCE OPERATIONS.
  19. APPROXIMATE LOCATION OF EXISTING MAINS ARE SHOWN. THE CONTRACTOR SHALL TAKE ALL NECESSARY PRECAUTIONS TO PROTECT EXISTING MAINS AND SERVICES AND MAINTAIN UNINTERRUPTED SUPPLY. ANY DAMAGE INCURRED SHALL BE REPAIRED IMMEDIATELY TO THE SATISFACTION OF THE ENGINEER, AT THE CONTRACTOR'S EXPENSE.
  20. W.H.C. INSIDE METER SETTING
  21. ALL COPPER WHC SHALL UTILIZE FLARED TYPE FITTINGS ONLY.

LOCATE GAS LINE IN THE FIELD PRIOR TO COMMENCEMENT OF ANY WORK. CONTRACTOR TO BE EXTREMELY CAUTIOUS WHEN CROSSING EXIST. 4" GAS LINE



SEDIMENT CONTROL MEASURES FOR THIS CONTRACT WILL BE IMPLEMENTED IN ACCORDANCE WITH ARTICLE 15 OF THESE SPECIFICATIONS. REVIEW FOR HOWARD COUNTY SOIL CONSERVATION DISTRICT AND MEETS TECHNICAL REQUIREMENTS.

*James M. Nelson* 7-31-84  
CHIEF, BUREAU OF ENGINEERING

THIS DEVELOPMENT PLAN IS APPROVED FOR EROSION AND SEDIMENT CONTROL BY HOWARD COUNTY SOIL CONSERVATION DISTRICT APPROVED:

*John J. Taylor*  
CHIEF, LAND DEVELOPMENT DIVISION

SAN SEWER PROFILE  
SCALE: HOR. 1"=50'  
VERT. 1"=5'

CONTRACT NO. 24-1246-D  
(F-84-89)

DEPARTMENT OF PUBLIC WORKS HOWARD COUNTY, MARYLAND <i>W. F. Nemy</i> 8-8-84 DIRECTOR OF PUBLIC WORKS <i>R. M. Brown</i> 8-2-84 CHIEF, BUREAU OF UTILITIES	HUDKINS ASSOCIATES INC. ENGINEERS & SURVEYORS 231 JOSEPH SQUARE COLUMBIA, MD 21044 TEL 730-9060	STATE OF MARYLAND PROFESSIONAL ENGINEER ARTHUR E. LEONARD	DES: E. J. M.			PLAN AND PROFILES OF SANITARY SEWER AND WATER MAIN	WATER & SEWER CONTRACT No. 24-1246-D EDWIN BASSLER SUBDIVISION No. 2 LOTS 18-19-20 BLOCK 'B' 5TH ELECT. DIST. HOWARD COUNTY, MARYLAND TAX MAP 35 PARCEL No. 175	SCALE AS SHOWN
			DRN: E. J. M.					SHEET 1 OF 1
			CHK: W. P.					
			DATE: 2-1-84	BY: NO.	REVISION	DATE	600' SCALE MAP NO. 35 BLOCK NO.	

AS BUILT: 8-8-84