


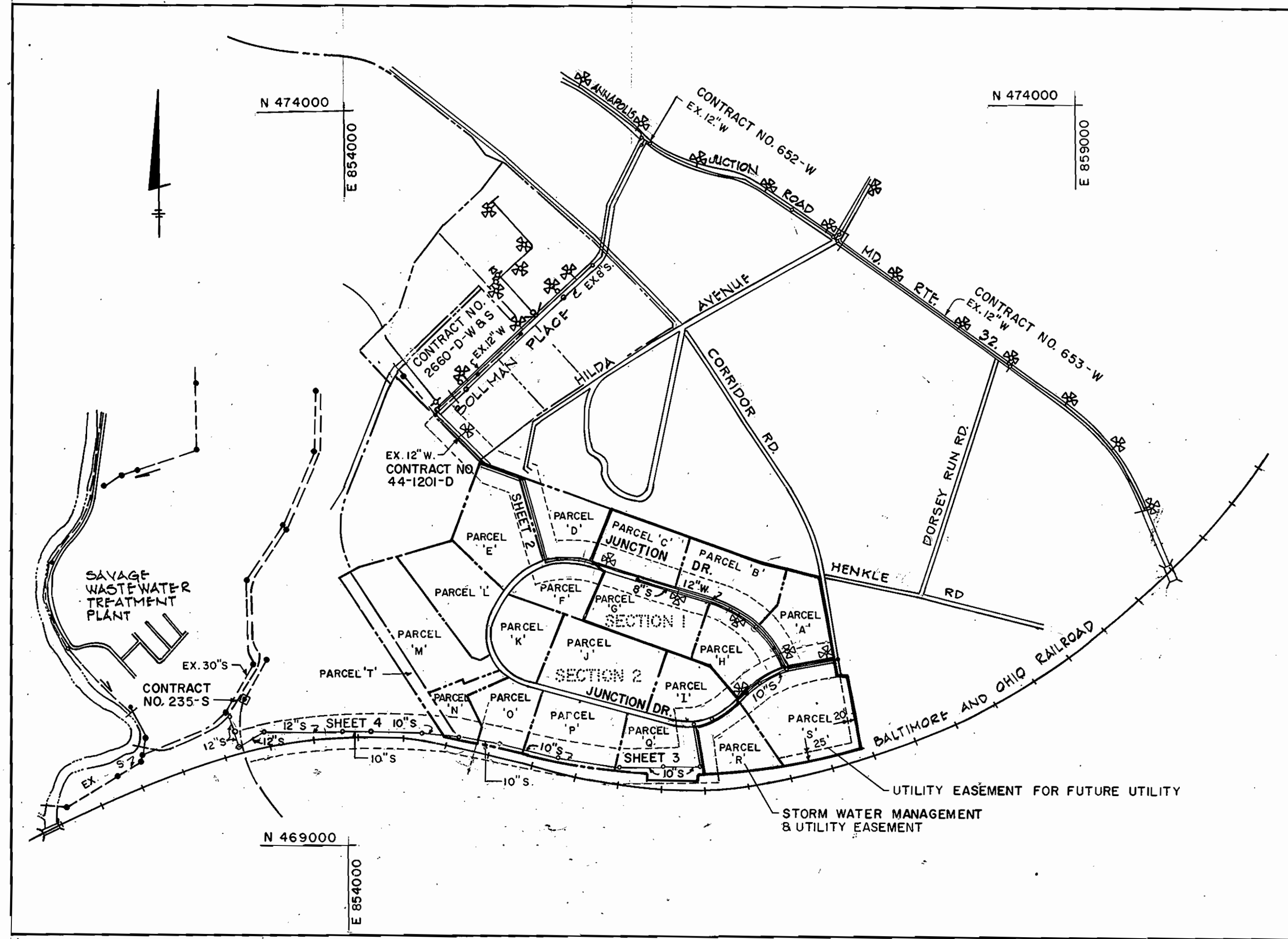
# JUNCTION INDUSTRIAL PARK

## SECTION I

### 6TH ELECTION DISTRICT HOWARD COUNTY, MARYLAND

#### GENERAL NOTES

- APPROXIMATE LOCATION OF EXISTING MAINS ARE SHOWN. THE CONTRACTOR SHALL TAKE ALL NECESSARY PRECAUTIONS TO PROTECT EXISTING MAINS AND SERVICES AND MAINTAIN UNINTERRUPTED SUPPLY. ANY DAMAGE INCURRED SHALL BE REPAIRED IMMEDIATELY TO THE SATISFACTION OF THE ENGINEER AT THE CONTRACTOR'S EXPENSE.
- ALL HORIZONTAL CONTROLS ARE BASED ON MARYLAND STATE COORDINATES.
- ALL VERTICAL CONTROLS ARE BASED ON U.S.G.S. DATA.
- ALL PIPE ELEVATIONS SHOWN ARE INVERT ELEVATIONS.
- CLEAR ALL UTILITIES BY A MINIMUM OF 6". CLEAR ALL POLES BY 2'-0" MINIMUM OR TUNNEL AS REQUIRED. THE OWNER HAS CONTACTED THE UTILITIES COMPANIES AND HAS MADE ARRANGEMENTS FOR BRACING OF POLES AS SHOWN ON THE DRAWINGS. IN THE EVENT THE CONTRACTOR'S WORK REQUIRES THE BRACING OF ADDITIONAL POLES, ANY COST INCURRED BY THE OWNER FOR THE BRACING OF ADDITIONAL POLES OR DAMAGES SHALL BE DEDUCTED FROM MONEY OWED THE CONTRACTOR. THE CONTRACTOR SHALL COORDINATE WITH THE UTILITY COMPANIES TO SCHEDULE THE BRACING OF THE POLES.
- FOR DETAILS NOT SHOWN ON THE DRAWINGS, AND FOR MATERIALS AND CONSTRUCTION METHODS, USE HOWARD COUNTY DESIGN MANUAL, VOLUME IV, STANDARD SPECIFICATIONS AND DETAILS FOR CONSTRUCTION. THE CONTRACTOR SHALL HAVE A COPY OF VOLUME IV ON THE JOB.
- WHERE TEST PITS HAVE BEEN MADE ON EXISTING UTILITIES, THEY ARE NOTED BY THE SYMBOL  AT THE LOCATION OF THE TEST PIT. A NOTE OR NOTES CONTAINING THE RESULTS OF THE TEST PIT OR PITS IS INCLUDED ON THE DRAWINGS. EXISTING UTILITIES IN THE VICINITY OF THE PROPOSED WORK FOR WHICH TEST PITS HAVE NOT BEEN DUG SHALL BE LOCATED BY THE CONTRACTOR TWO WEEKS IN ADVANCE OF CONSTRUCTION OPERATIONS AT HIS OWN EXPENSE.
- CONTRACTOR SHALL NOTIFY THE FOLLOWING UTILITIES OR AGENCIES AT LEAST FIVE WORKING DAYS BEFORE STARTING WORK SHOWN ON THESE PLANS:  
STATE HIGHWAY ADMINISTRATION - 531-5533  
BALTIMORE GAS & ELECTRIC CO. - CONTRACTOR SERVICES - 561-2585  
BALTIMORE GAS & ELECTRIC CO. UNDER GROUND DAMAGE CONTROL - 234-5621  
BALTIMORE GAS & ELECTRIC CO. TROUBLE SHOOTING - 298-9013  
MISS UTILITY - 1-559-0100  
COLONIAL PIPELINE CO. - 795-1390.  
BUREAU OF UTILITIES, HOWARD COUNTY DEPARTMENT OF PUBLIC WORKS - 922-2366
- TREES AND SHRUBS ARE TO BE PROTECTED FROM DAMAGE TO MAXIMUM EXTENT. TREES AND SHRUBS LOCATED WITHIN THE CONSTRUCTION STRIP ARE NOT TO BE REMOVED OR DAMAGED BY THE CONTRACTOR.
- CONTRACTOR SHALL REMOVE TREES, STUMPS AND ROOTS ALONG LINE OF EXCAVATION. PAYMENT FOR SUCH REMOVAL SHALL BE INCLUDED IN THE UNIT PRICE BID FOR CONSTRUCTION OF THE MAIN.
- ALL WATER MAINS TO BE D.I.P. UNLESS OTHERWISE NOTED CLASS 52.
- TOPS OF ALL WATER MAINS TO HAVE A MINIMUM OF 3'-1/2" COVER UNLESS OTHERWISE NOTED.
- VALVES ADJACENT TO TEES SHALL BE STRAPPED TO TEES.
- ALL FITTINGS SHALL BE BUTTRESSED OR ANCHORED WITH CONCRETE IN ACCORDANCE WITH THE STANDARD DETAILS UNLESS OTHERWISE PROVIDED FOR ON THE DRAWINGS.
- FIRE HYDRANTS SHALL BE SET TO THE BURY LINE ELEVATIONS SHOWN ON THE DRAWINGS. ALL FIRE HYDRANTS SHALL BE STRAPPED AND BUTTRESSED WITH CONCRETE IN ACCORDANCE WITH STANDARD DETAILS. SOIL AROUND THE FIRE HYDRANT SHALL BE COMPACTED IN ACCORDANCE WITH SECTION 1003 THE STANDARD SPECIFICATIONS.
- THE CONTRACTOR SHALL NOT OPERATE ANY WATER MAIN VALVES ON THE EXISTING WATER SYSTEM.
- ALL SEWER MAINS SHALL BE C.S.P.X., R.C.S.P., V.C.P.X., A.C.P. CLASS 2400 OR P.V.C. UNLESS OTHERWISE NOTED.
- THE CONTRACTOR SHALL PROVIDE A JOINT IN ALL SEWER MAINS WITHIN 2'-0" OF EXTERIOR MANHOLE WALL.
- ALL MANHOLES SHALL BE 4'-0" INSIDE DIAMETER UNLESS OTHERWISE NOTED.
- MANHOLES SHOWN WITH 12" AND 16" WALLS ARE BRICK MANHOLES ONLY.
- MANHOLES DESIGNATED W.T. IN PLAN AND PROFILE SHALL HAVE WATERTIGHT FRAME AND COVERS, STANDARD DETAIL G 5.52. WHERE WATERTIGHT MANHOLE FRAME AND COVER IS USED, SET TOP OF FRAME 1'-6" ABOVE FINISHED GRADE UNLESS OTHERWISE NOTED ON THE DRAWINGS.
- BID LINE TO BE EXISTING GROUND EXCEPT AS NOTED.
- EXCAVATING AND BACKFILLING OPERATIONS SHALL BE PERFORMED IN SUCH A MANNER AS TO PROVIDE POSITIVE DRAINAGE UPON COMPLETION OF THE PROJECT.
- ALL WATER HOUSE CONNECTIONS SHALL BE FOR INSIDE METER SETTINGS, UNLESS OTHERWISE NOTED.
- FIVE DAYS PRIOR TO THE START OF ANY WORK WITHIN THE PROPERTY OF THE SAVAGE TREATMENT PLANT THE CONTRACTOR SHALL CONTACT AND COORDINATE WITH THE HOWARD COUNTY BUREAU OF ENVIRONMENT SERVICES, PHONE 792-7020. THE WORK SHALL BE LIMITED TO BETWEEN 6 A.M. AND 6 P.M.
- SEDIMENT CONTROL SHALL BE IN ACCORDANCE WITH ARTICLE 15 OF THE HOWARD COUNTY DESIGN MANUAL VOL. II STANDARD SPECIFICATIONS AND SITE PLAN F-84-204.



LOCATION PLAN  
SCALE: 1" = 600'

WATER HOUSE CONNECTION	6
SEWER HOUSE CONNECTION	6
LOTS & TYPE	7 PARCELS 6 OFFICE / WAREHOUSE AND 1 STORM WATER MANAGEMENT
DRAINAGE / TREATMENT	
PLANT BASIN	SAVAGE (LITTLE PATUXANT)

WATER AND SEWER CODE  
(COUNTY USE)  
SEWER NO. 4020000  
WATER NO. C04

#### INDEX OF DRAWINGS

SHEET NO.	DESCRIPTION
1	LOCATION PLAN
2	PLAN - WATER AND SEWER MAINS STA. 100+00 TO STA. 113+13, STA. 43+60 TO STA. 62+05
3	PLAN - WATER AND SEWER MAINS STA. 9+80 TO STA. 18+10, STA. 62+05 TO STA. 62+68
4	PLAN - SANITARY MAIN
5	PROFILE - WATER AND SEWER MAINS STA. 100+00 TO STA. 113+13, STA. 43+60 TO STA. 62+68
6	PROFILE - WATER AND SEWER MAINS
7	PROFILE - SEWER MAIN

#### QUANTITIES

ITEM	PROPOSED	AS BUILT	MATERIAL SUPPLIED
MANHOLE FRAME & COVER	16 EA.	16 EA.	B+C UTILITY SUPPLY
WATERTIGHT MANHOLE FRAME & COVER	7 EA.	7 EA.	" " "
8" WALL MANHOLE	238 V.F.		
12" WALL MANHOLE	31 V.F.	23 EA.	ATLANTIC PRECAST
18" WALL MANHOLE	10 V.F.		
12" WATER MAIN	3860 L.F.	3866 L.F.	A+P WATER SUPPLY - GRIFFIN, McWANE 1 CLOW
6" WATER MAIN	355 L.F.	267 L.F.	" " "
12" VALVE	7 EA.	7 EA.	A+P WATER SUPPLY - MUELLER
6" VALVE	14 EA.	5 EA.	" " " "
FIRE HYDRANTS	6 EA.	6 EA.	" " " "
AIR RELEASE MANHOLE	1 EA.	1 EA.	ATLANTIC PRECAST - APCO
10" SEWER MAINS	3735 L.F.	3672 L.F.	PVC - BELAIR RD SUPPLY DIV. A+P WATER
8" SEWER MAINS	1285 L.F.	1304 L.F.	" " "
12" SEWER MAINS	1030 L.F.	1057 L.F.	" " "
1 1/2" DRAIN BLOW-OFF	3 EA.	3 EA.	TRENTON
8" WATER MAIN	215 L.F.	225 L.F.	A+P - ETC.
8" VALVE	6 EA.	6 EA.	A+P - MUELLER

THIS DEVELOPMENT PLAN IS APPROVED FOR SOIL EROSION AND SEDIMENT CONTROL BY THE HOWARD COUNTY DISTRICT.

Approved: *[Signature]* Date: 12/13/84  
Howard S.C.D.

Reviewed for: *[Signature]* S.C.D. Name  
and meets Technical Requirements  
*[Signature]* Date: 12/13/84  
Signature  
U.S. Soil Conservation Service

DEPARTMENT OF PUBLIC WORKS  
HOWARD COUNTY, MARYLAND

*[Signature]* 12-21-84  
DIRECTOR OF PUBLIC WORKS DATE

*[Signature]* 12-20-84  
CHIEF - BUREAU OF UTILITIES DATE

*[Signature]* 12-20-84  
CHIEF - BUREAU OF ENGINEERING DATE

*[Signature]* 12-20-84  
CHIEF - LAND DEVELOPMENT DIVISION - DATE

WHITNEY SAILEY CONSULTING ENGINEERS  
1850 York Road  
Timonium Md. 21093  
301-252-6060



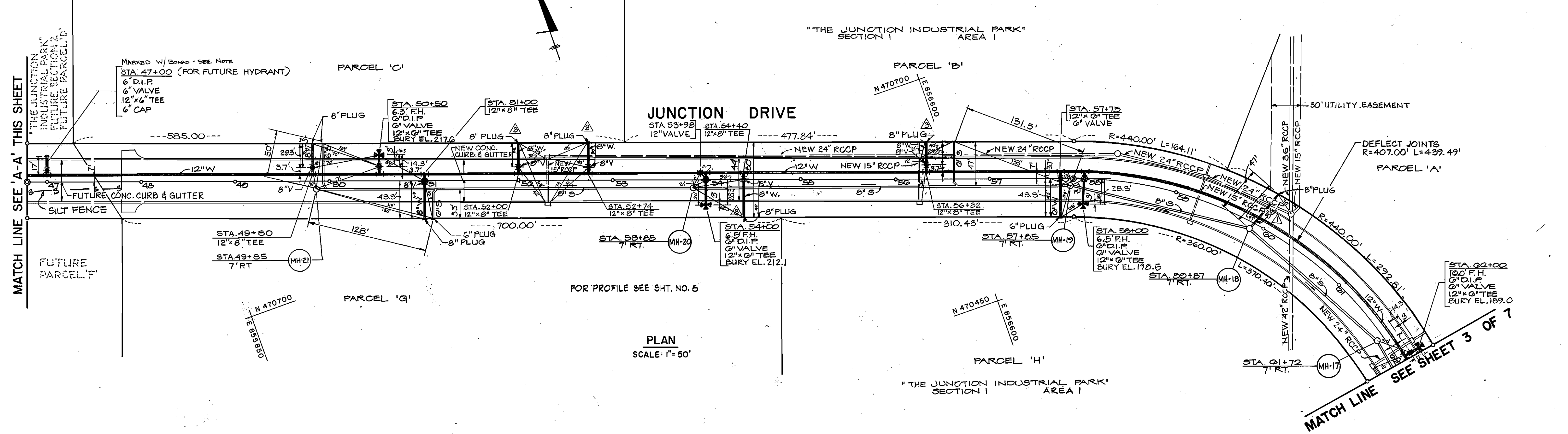
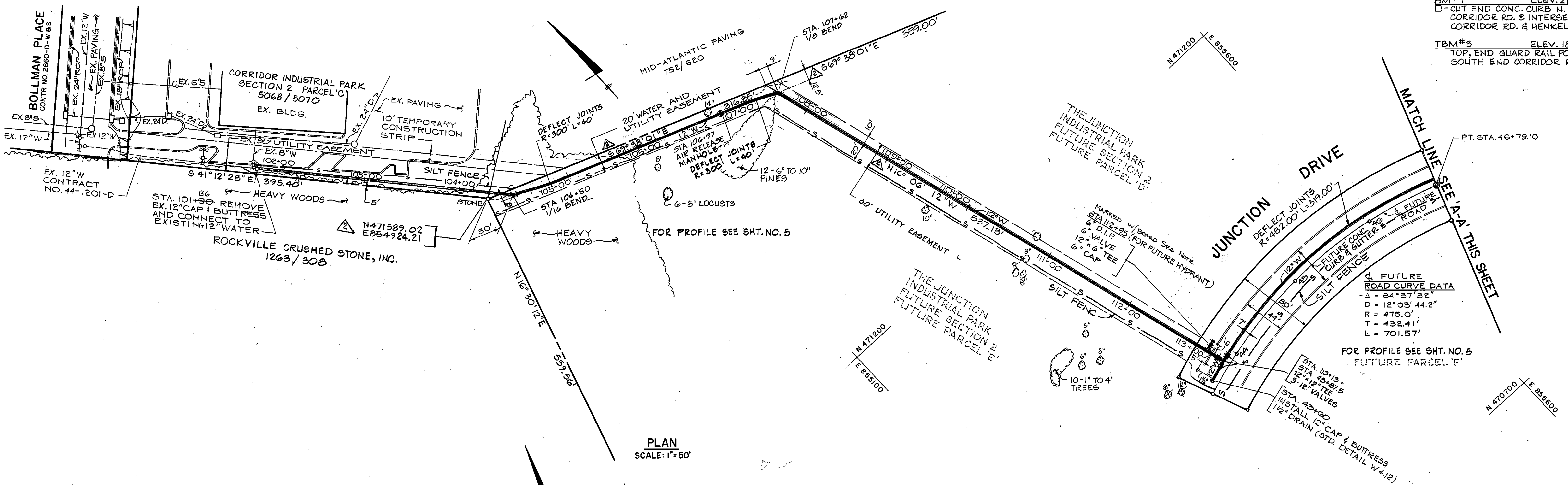
DES: P.D.	
DRN: M.L.	
CHK: B.D.J.	
DATE: 11-1-84	
BY: NO.	
REVISION	

LOCATION PLAN  
CONTRACT NO. 24-1242-D  
600' SCALE MAP NO. 48 BLOCK NO. 19

JUNCTION INDUSTRIAL PARK SECTION I  
ELECTION DISTRICT GILFORD NO. 6

SCALE AS SHOWN  
SHEET 1 OF 7

BM#1 ELEV. 210.71  
 CUT END CONC. CURB N. SIDE  
 CORRIDOR RD. @ INTERSECTION  
 CORRIDOR RD. & HENKELS LA.  
 TBM#3 ELEV. 186.91  
 TOP, END GUARD RAIL POST  
 SOUTH END CORRIDOR ROAD



NOTE: LOCATIONS OF FUTURE HYDRANTS MARKED BY BOARDS. AREA IS 10'± ABOVE PROPOSED FUTURE GRADE. NO STRUCTURES WITH-IN 300' TO USE AS REFERENCE.

DEPARTMENT OF PUBLIC WORKS  
 HOWARD COUNTY, MARYLAND

Director of Public Works: [Signature] DATE: 12-21-84  
 Chief-Bureau of Engineering: [Signature] DATE: 12-21-84  
 Chief-Bureau of Utilities: [Signature] DATE: 12-20-84  
 Chief-Land Development Division: [Signature] DATE: 12-21-84

HITNEY CONSULTING ENGINEERS  
 AILEY  
 OX  
 MAGNANI  
 1850 York Road  
 Timonium Md. 21093  
 301-252-6060



DES: J.K.			
DRN: C.C.			
CHK: P.D.	WBCM	8" WATER, VALVES, PLUGS & TEES ADDED	1/13/85
	WBCM	REVISE BEARINGS & COORDINATE	3-2-85
	WBCM	ADD NEW STUB FROM MH-18	2/9/85
DATE: 11-1-84	BY: NO.	REVISION	DATE

PLAN - WATER AND SEWER MAINS  
 STA. 100+00 TO STA. 113+13  
 STA. 43+60 TO STA. 62+05  
 CONTRACT NO. 24-1242-D  
 600' SCALE MAP NO. 48 BLOCK NO. 19

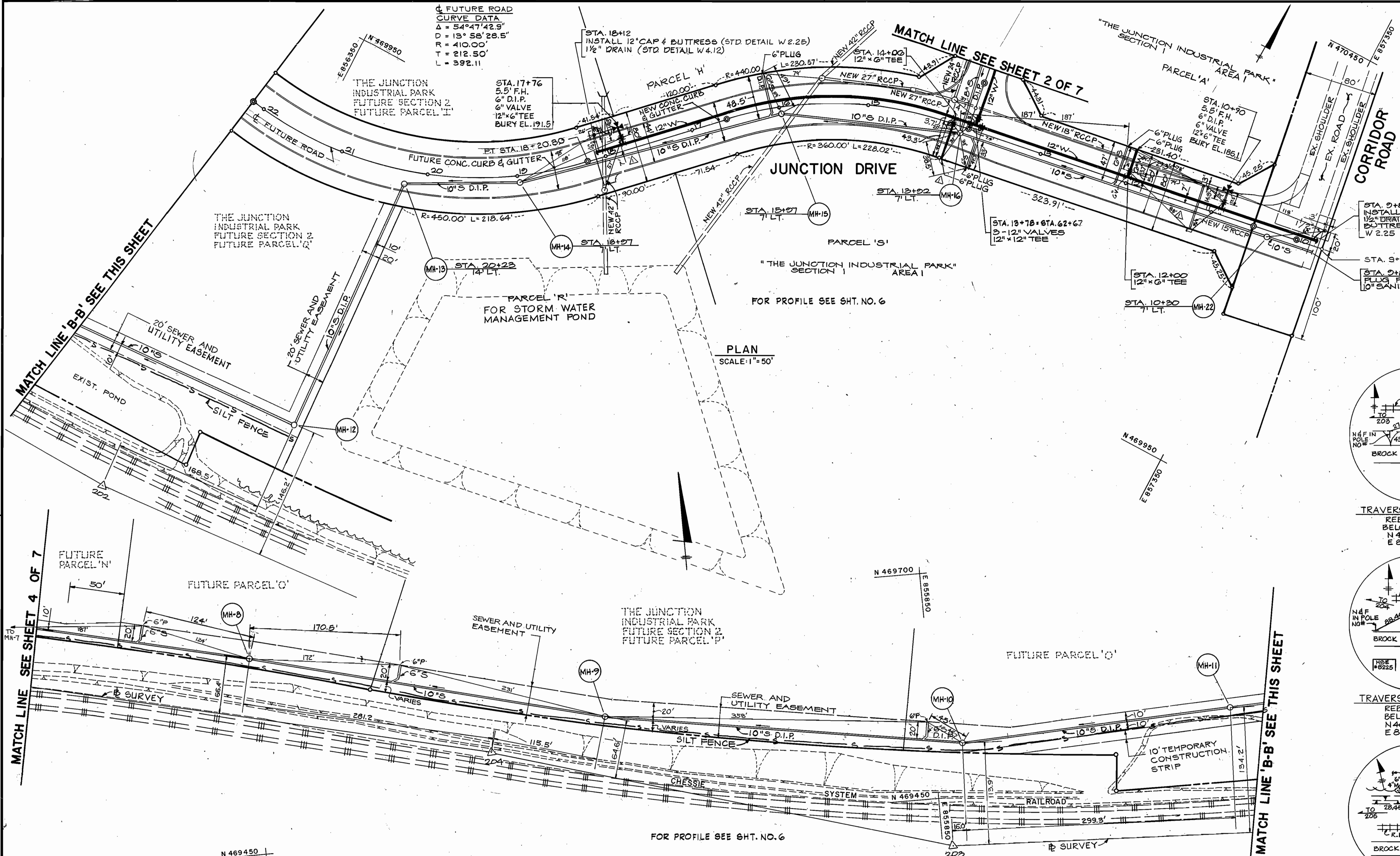
JUNCTION INDUSTRIAL PARK SECTION I  
 ELECTION DISTRICT GILFORD NO. 6  
 SHEET 2 OF 7

SCALE AS SHOWN  
 SHEET 2 OF 7

AS-BUILT JULY, 1986

FUTURE ROAD  
 CURVE DATA  
 $\Delta = 54^{\circ}47'42.9''$   
 $D = 13^{\circ}58'28.5''$   
 $R = 410.00'$   
 $T = 212.50'$   
 $L = 392.11'$

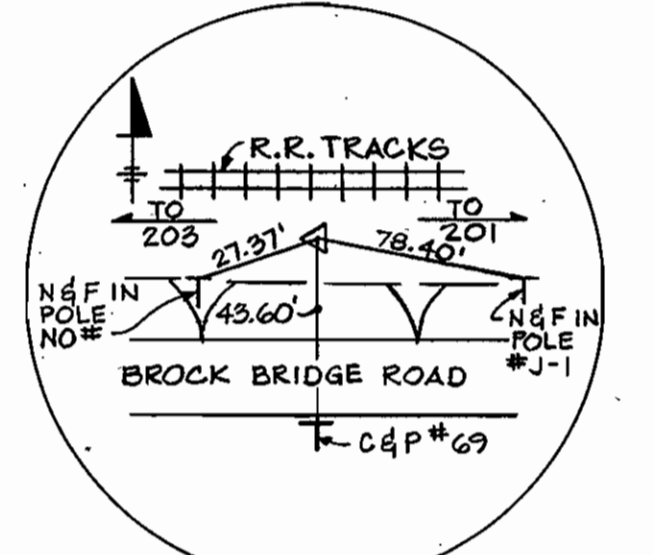
BM#1 ELEV. 210.71  
 CUT END CONC. CURB W.  
 SIDE CORRIDOR ROAD @  
 INTERSECTION CORRIDOR  
 ROAD & HENKELS LA.  
 TBM#3 ELEV. 186.91  
 TOP, EAST GUARD RAIL  
 POST SOUTH END  
 CORRIDOR ROAD  
 BM#23 ELEV. 162.72  
 CUT NAIL IN POLE NO# N.  
 SIDE BROCK BRIDGE RD.  
 15' ± S.E. OF A 203  
 BM#24 ELEV. 159.19  
 CUT NAIL IN POLE #J-5 ON  
 N. SIDE BROCK BRIDGE RD.  
 200' ± S.W. OF A 204



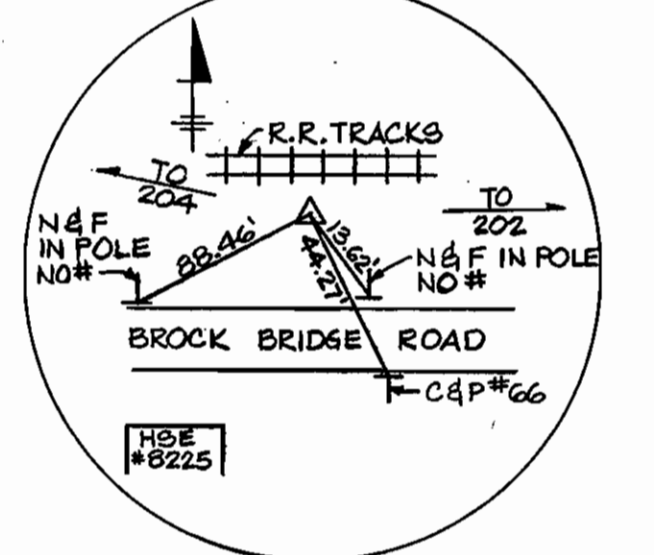
PLAN SCALE: 1" = 50'

FOR PROFILE SEE SHT. NO. 6

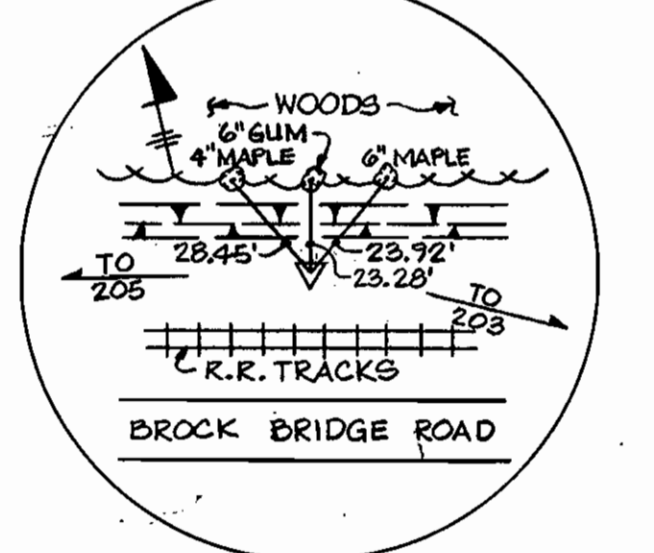
PLAN SCALE: 1" = 50'



TRAVERSE PT. STA. 202  
 REBAR & CAP 20'  
 BELOW SURFACE  
 N 467379.4364  
 E 856321.9951



TRAVERSE PT. STA. 203  
 REBAR & CAP 20'  
 BELOW SURFACE  
 N 469397.6108  
 E 855860.9632



TRAVERSE PT. STA. 204  
 REBAR & CAP 10'  
 BELOW SURFACE  
 N 469541.6079  
 E 855357.3762

DEPARTMENT OF PUBLIC WORKS  
 HOWARD COUNTY, MARYLAND  
 Director of Public Works: *Glenn W. Neuman* 12-21-84  
 Chief - Bureau of Engineering: *John A. ...* 12-21-84  
 Chief - Bureau of Utilities: *Robert M. ...* 12-20-84  
 Chief - Land Development Division: *...*

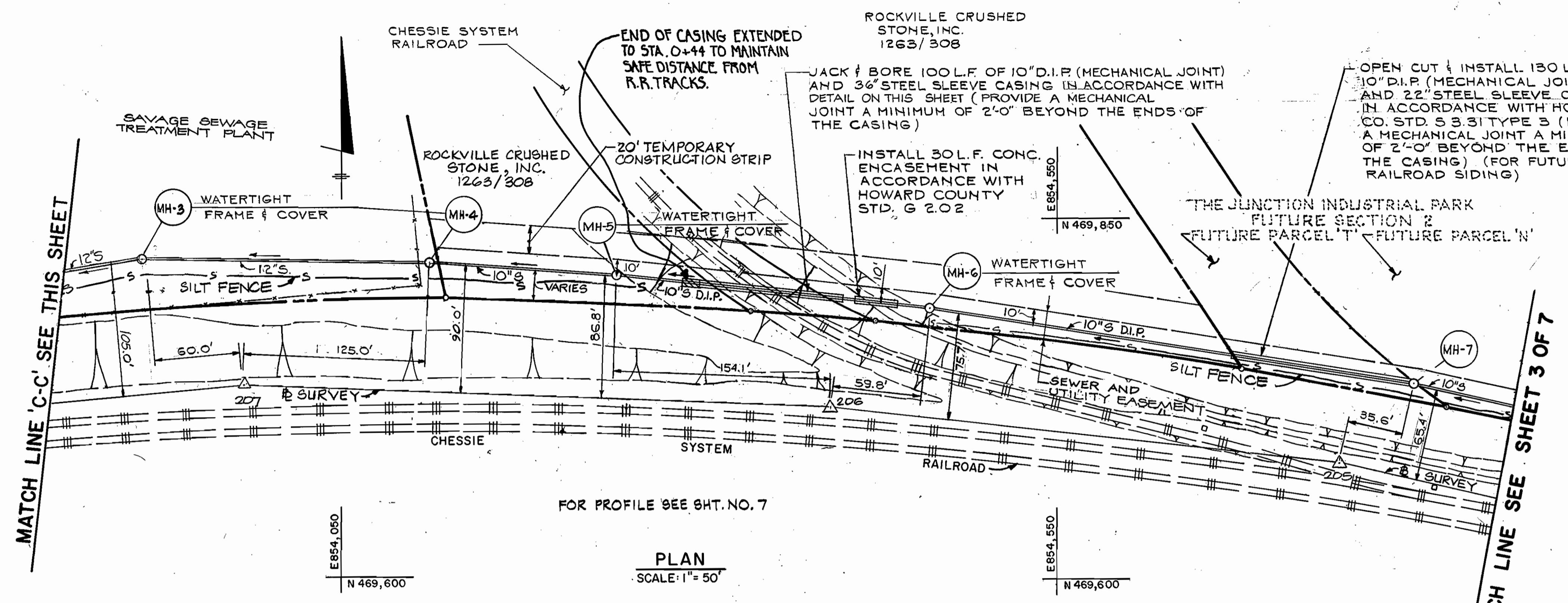
HITNEY AILEY FOX AGNANI  
 CONSULTING ENGINEERS  
 1850 York Road  
 Timonium Md. 21093  
 301-252-6060



DES: J.K.			
DRN: C.C.			
CHK: P.D.			
DATE: 11-1-84	JJK	WATER - DIMENSION & LOCATION CHANGE	2/1/85
BY NO.		REVISION	DATE

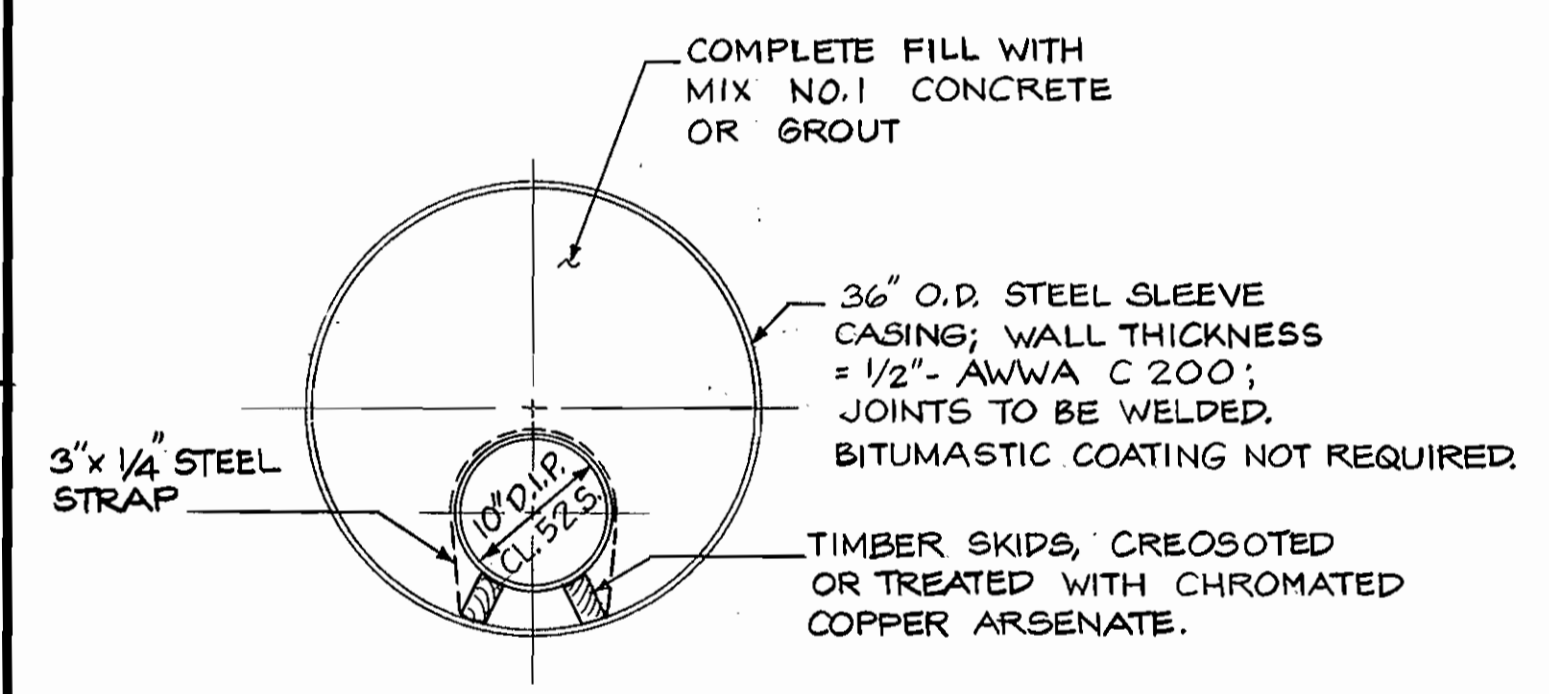
PLAN - WATER AND SEWER MAINS  
 STA. 9+80 TO STA. 18+10  
 STA. 62+05 TO STA. 62+68  
 CONTRACT NO. 24-1242-D  
 600' SCALE MAP NO. 48 BLOCK NO. 19

SCALE AS SHOWN  
 SHEET 3 OF 7  
 JUNCTION INDUSTRIAL PARK SECTION I  
 ELECTION DISTRICT GILFORD NO. 6

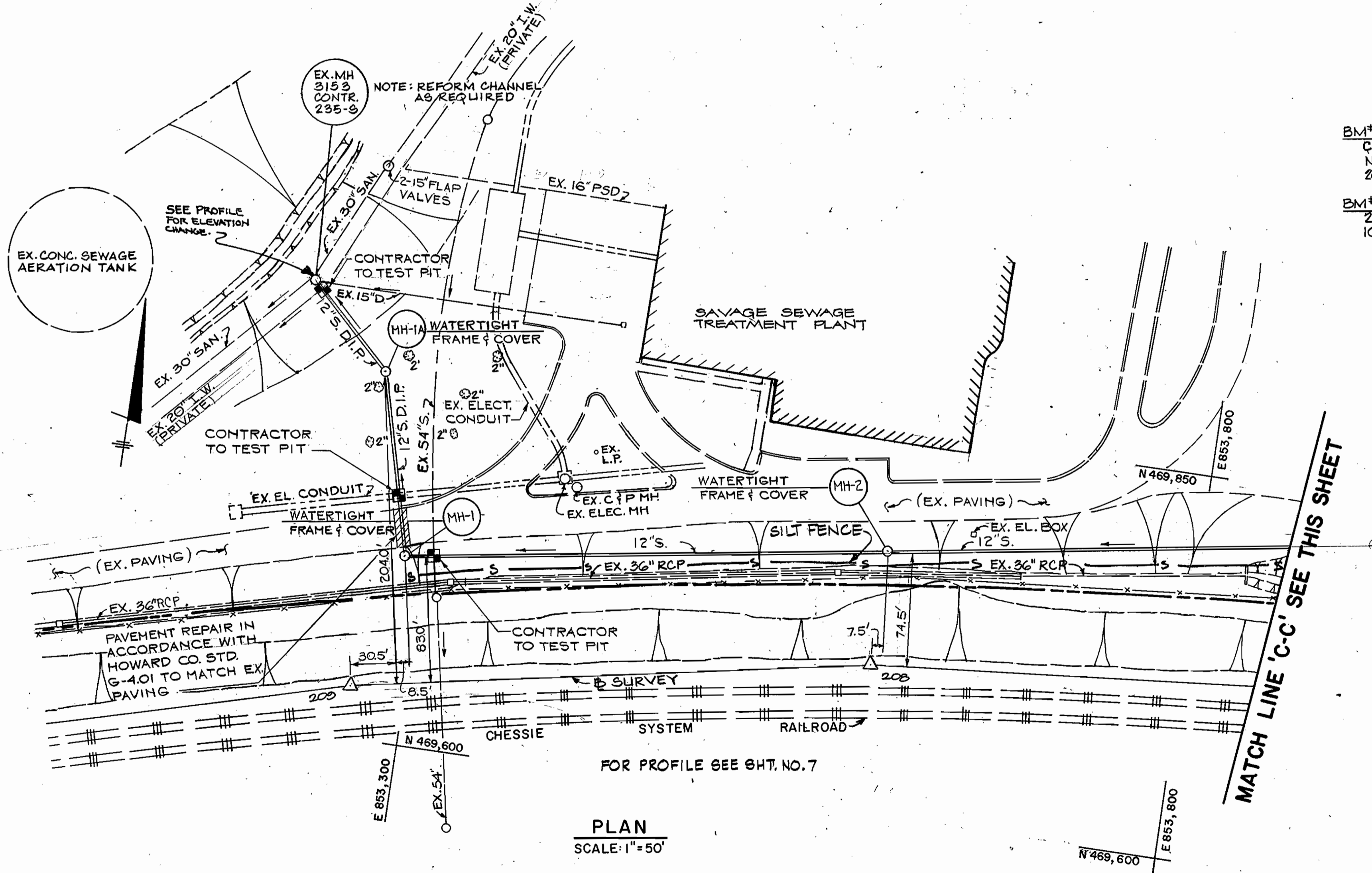


FOR PROFILE SEE SHT. NO. 7

PLAN  
SCALE: 1" = 50'

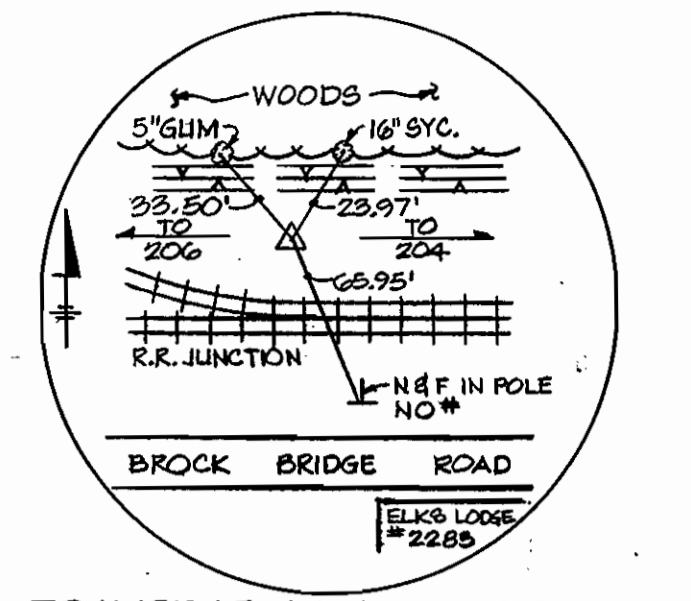


DETAIL  
JACKING AND BORING  
10" SEWER - 36" STEEL SLEEVE  
NOT TO SCALE

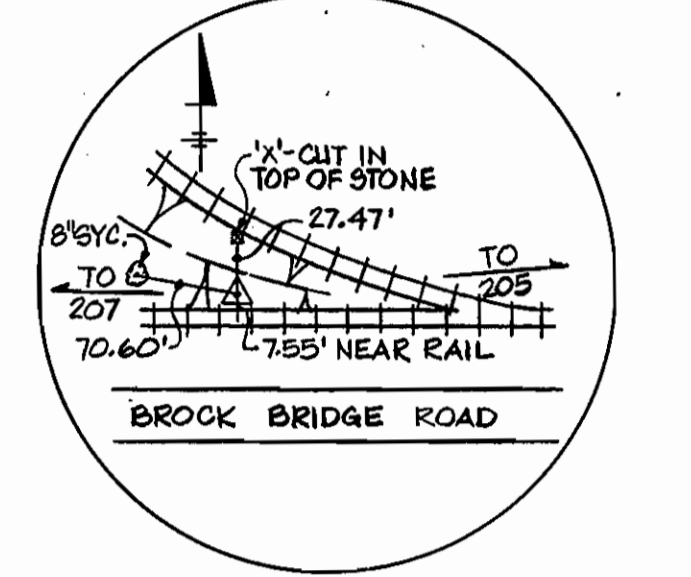


FOR PROFILE SEE SHT. NO. 7

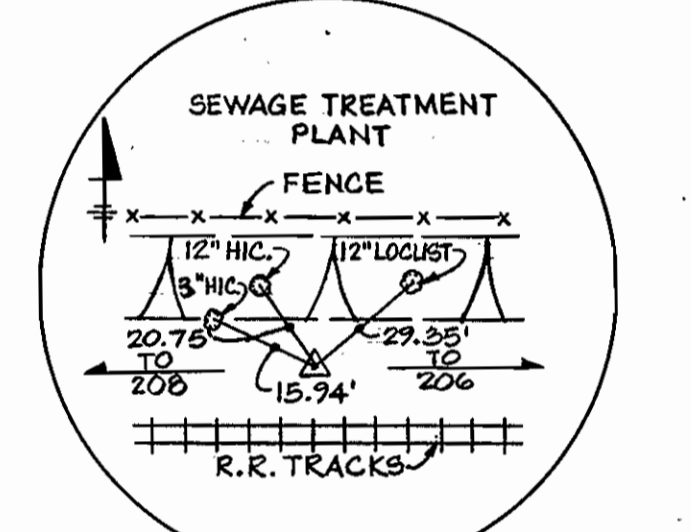
PLAN  
SCALE: 1" = 50'



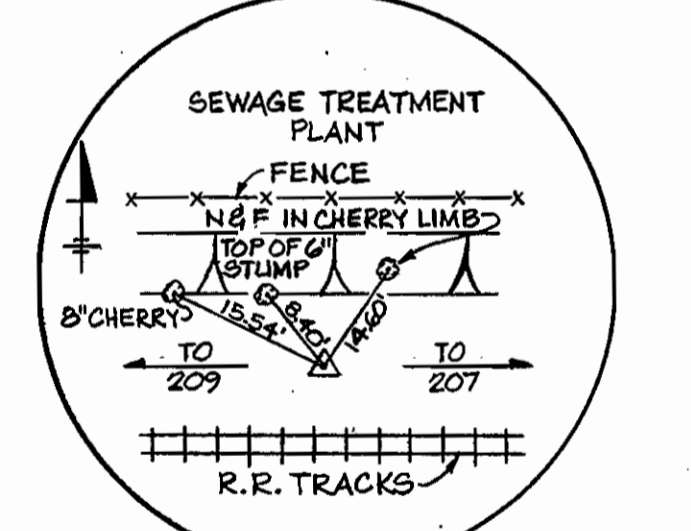
TRAVERSE PT. STA. 205  
REBAR & CAP 10"  
BELOW SURFACE  
N 469 61.9571  
E 854 746.5118



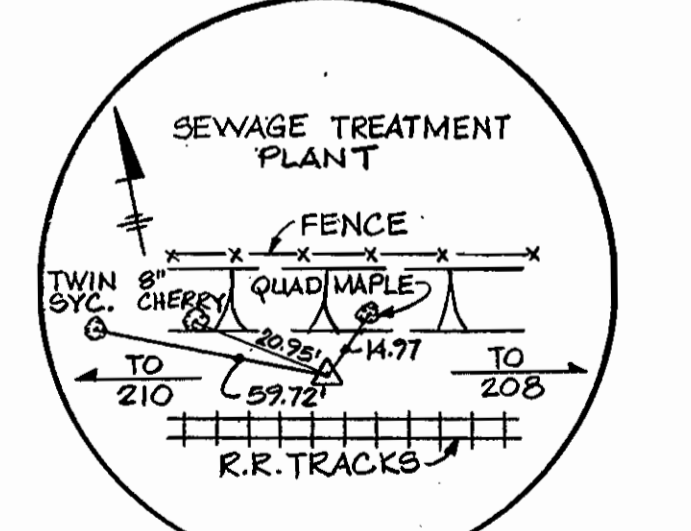
TRAVERSE PT. STA. 206  
REBAR & CAP 10"  
BELOW SURFACE  
N 469 720.0790  
E 854 392.1062



TRAVERSE PT. STA. 207  
REBAR & CAP 20"  
BELOW SURFACE  
N 469 723.4092  
E 853 990.7622



TRAVERSE PT. STA. 208  
REBAR & CAP 20"  
BELOW SURFACE  
N 469 697.5914  
E 853 598.5468

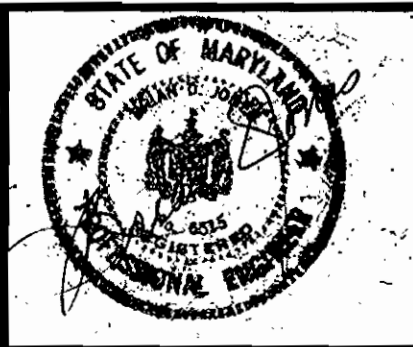


TRAVERSE PT. STA. 209  
REBAR & CAP 20"  
BELOW SURFACE  
N 469 632.8815  
E 853 264.2099

BM#25 ELEV. 154.97  
CLUT NAIL IN POLE NO # ON  
N. SIDE BROCK BRIDGE ROAD  
200' ± S.W. OF Δ 205  
BM#26 ELEV. 153.64  
2-CUT NAILS IN TOP OF STUMP  
10' ± N. OF Δ 208

DEPARTMENT OF PUBLIC WORKS  
HOWARD COUNTY, MARYLAND  
Director of Public Works: [Signature]  
Chief-Bureau of Utilities: [Signature]  
Chief-Bureau of Engineering: [Signature]  
Chief-Land Development Division: [Signature]

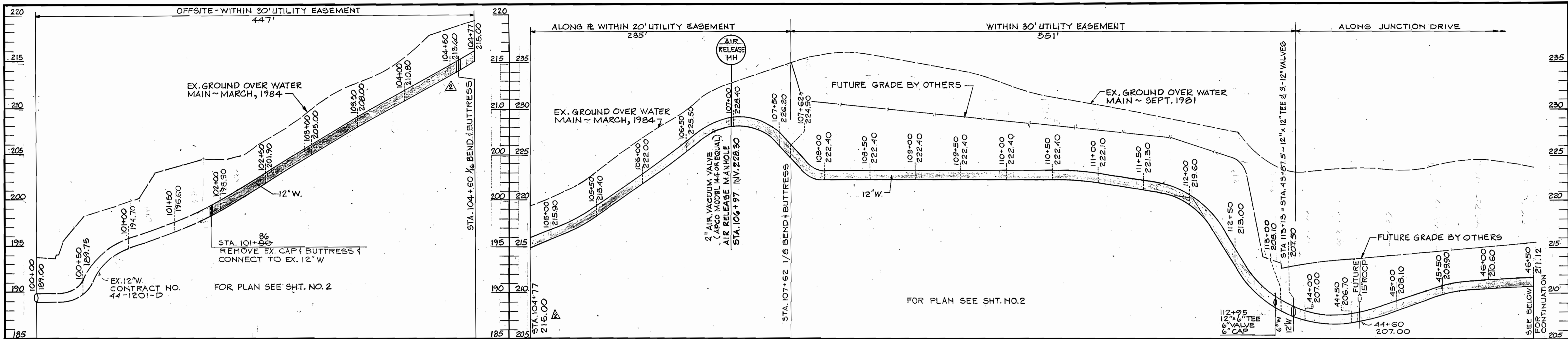
WHITNEY CONSULTING ENGINEERS  
WHAILEY  
FOX  
MAGNANI  
1850 York Road  
Timonium Md. 21093  
301-252-6060



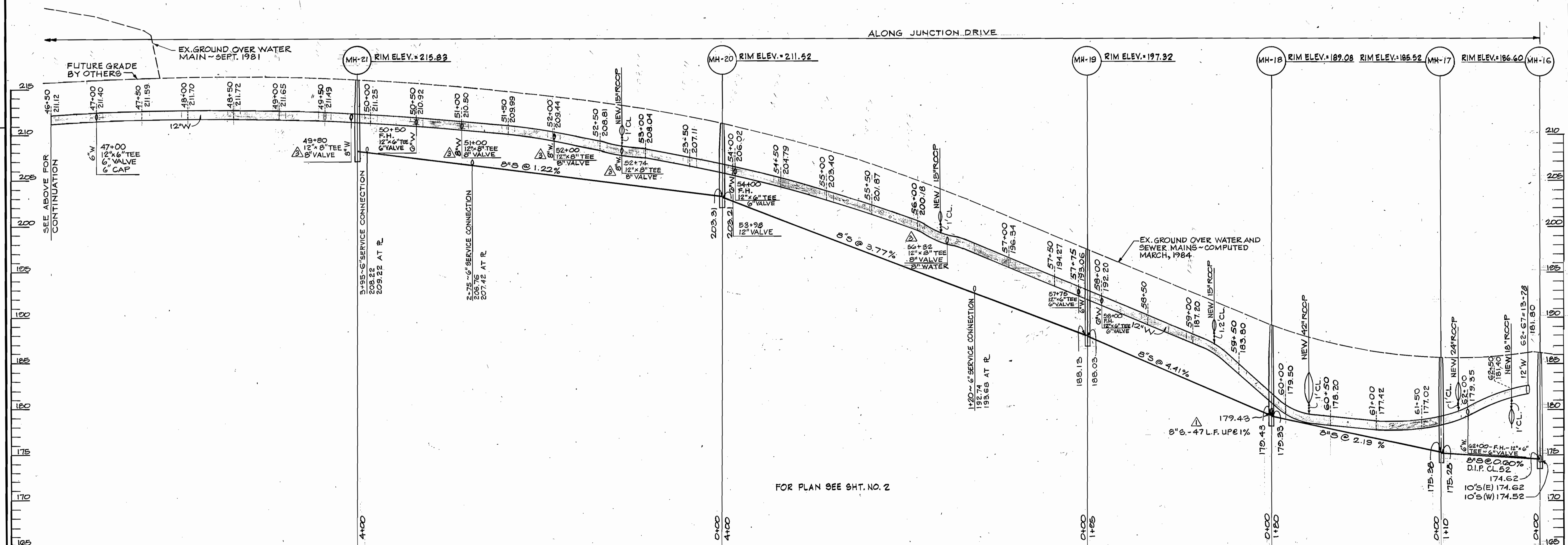
DES: J. K.	DRN: C. C.	CHK: P. D.	DATE: 11-1-84
BY: NO.	REVISION	DATE	

PLAN - SANITARY MAIN  
CONTRACT NO. 24-1242-D  
600' SCALE MAP NO. 48 BLOCK NO. 19

JUNCTION INDUSTRIAL PARK SECTION I  
ELECTION DISTRICT GILFORD NO. 6  
SCALE AS SHOWN  
SHEET 4 OF 7



**WATER MAIN PROFILE**  
SCALE: HORIZ. 1" = 50'  
VERT. 1" = 5'



**WATER & SEWER MAIN PROFILES**  
SCALE: HORIZ. 1" = 50' & VERT. 1" = 5'

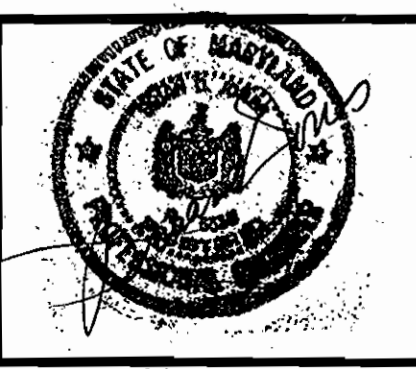
DEPARTMENT OF PUBLIC WORKS  
HOWARD COUNTY, MARYLAND

*Wayne F. Newman* 12-21-84  
DIRECTOR OF PUBLIC WORKS DATE

*Richard B. ...* 12-20-84  
CHIEF - BUREAU OF UTILITIES DATE

*William E. ...* DATE  
CHIEF - LAND DEVELOPMENT DIVISION - DATE

**HITNEY AILEY OX AGNANI** CONSULTING ENGINEERS  
1850 York Road  
Timonium Md. 21093  
301-252-6060



DES: J.K.			
DRN: C.C.	WBCM	8" WATER, VALVES & TEES ADDED	
CHK: P.D.	WBCM	BEND LOCATION CHANGED	2/26/85
DATE: 11-1-84	WBCM	ADD NEW 8" TUB FROM MH-18	2/9/85
	BY NO.	REVISION	DATE

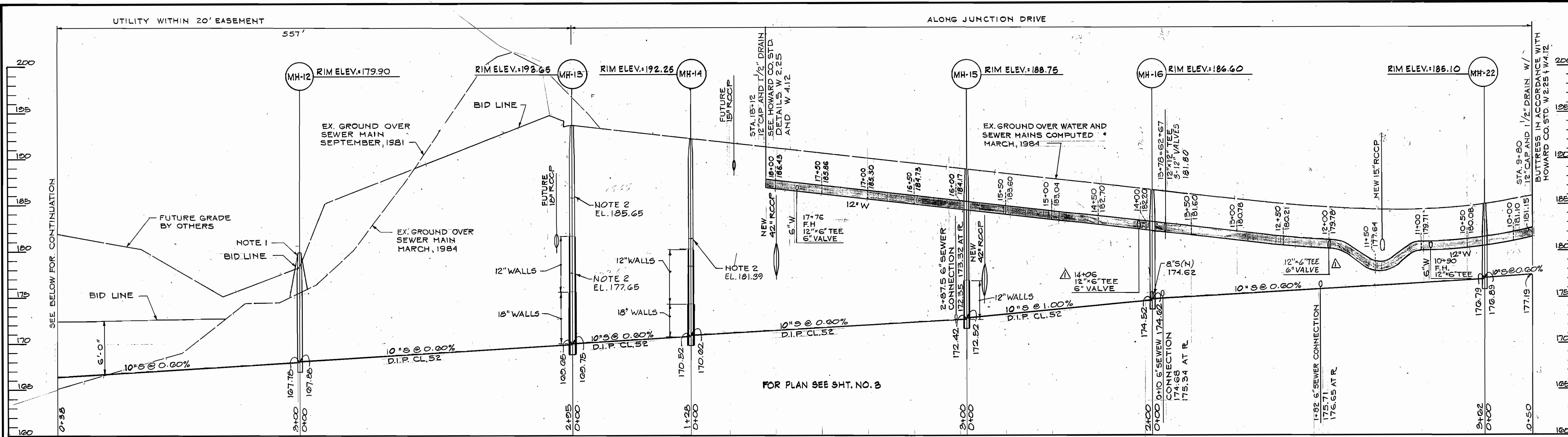
**PROFILE - WATER AND SEWER MAINS**  
STA. 100+00 TO STA. 113+13  
STA. 43+60 TO STA. 62+68

CONTRACT NO. 24-1242-D

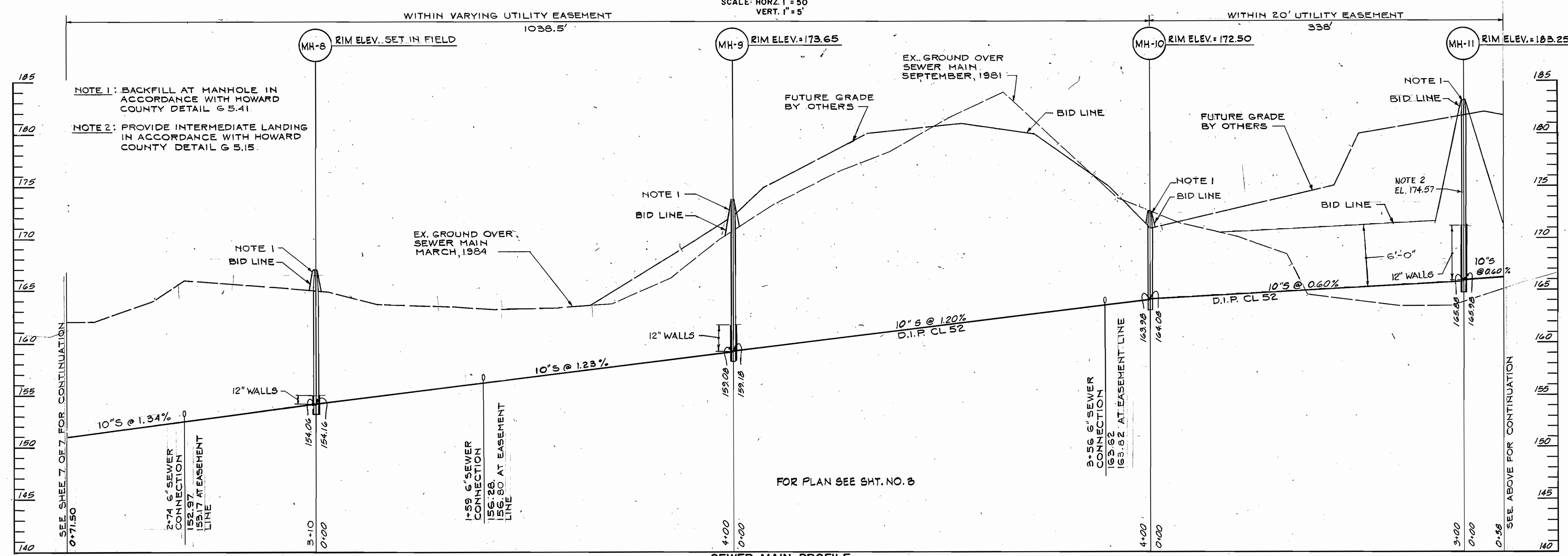
600' SCALE MAP NO. 48 BLOCK NO. 19

JUNCTION INDUSTRIAL PARK SECTION I  
ELECTION DISTRICT GILFORD NO. 6

SCALE AS SHOWN  
SHEET 5 OF 7



**WATER AND SEWER MAIN PROFILES**  
SCALE: HORIZ. 1" = 50'  
VERT. 1" = 5'



**SEWER MAIN PROFILE**  
SCALE: HORIZ. 1" = 50'  
VERT. 1" = 5'

DEPARTMENT OF PUBLIC WORKS  
HOWARD COUNTY, MARYLAND  
12-21-84  
DIRECTOR OF PUBLIC WORKS  
CHIEF - BUREAU OF UTILITIES

HITNEY AILEY OX AGNANI  
CONSULTING ENGINEERS  
1850 York Road  
Timonium Md. 21093  
301-252-6060



DES:	J.K.
DRN:	C.C.
CHK:	P.D.
DATE:	11-1-84
BY:	J.J.K.
NO.:	ADD 12" x 6" TEE & CHANGE LOCATION
REVISION:	
DATE:	2/19/86

PROFILE WATER AND SEWER MAINS  
CONTRACT NO. 24-1242-D  
600' SCALE MAP NO. 48 BLOCK NO. 19

JUNCTION INDUSTRIAL PARK SECTION I  
ELECTION DISTRICT GILFORD NO. 6  
SCALE AS SHOWN  
SHEET 6 OF 7

AS-BUILT JULY, 1986

