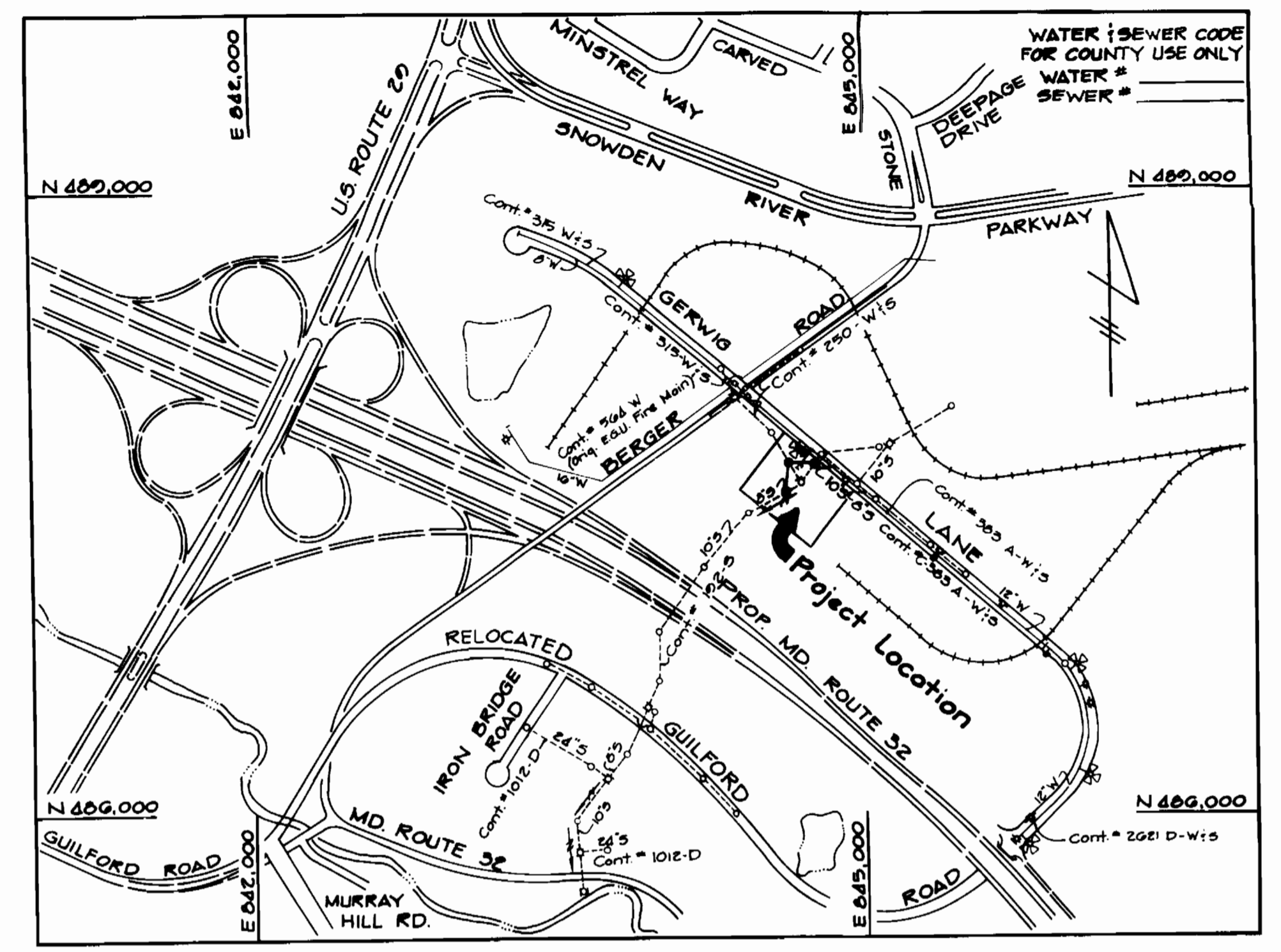
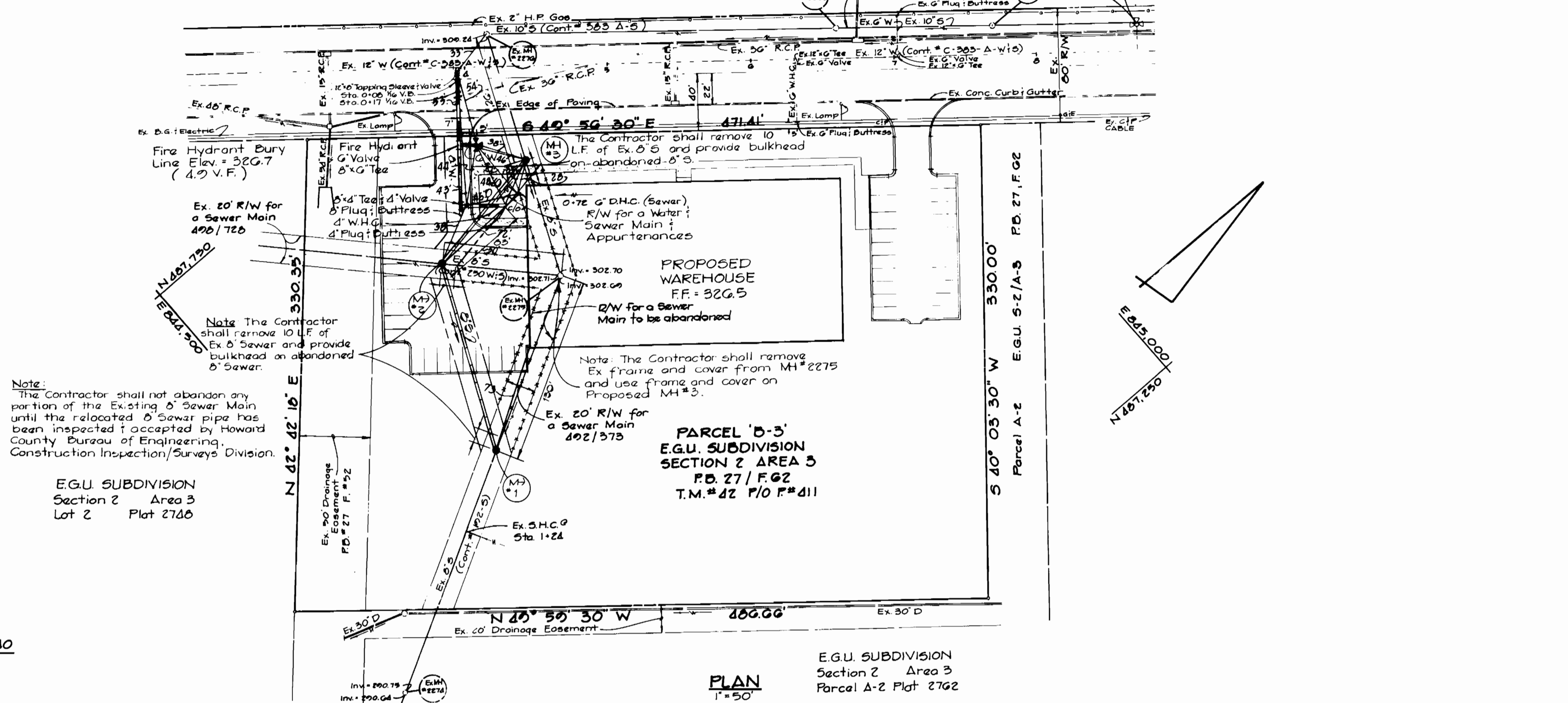


Note: The Contractor shall construct Manholes 1, 2, & 3 over Ex. 8 Sewer Main and reform channel as required. Detail G 514.

Note: The Contractor shall test pit Existing 12" Water Main to verify as built invert prior to construction of Water Main.

Bench Mark  
B.M. #100 Elev. = 334.06  
"Cut" Road Side Bonnet Bolt on Fire Hydrant.

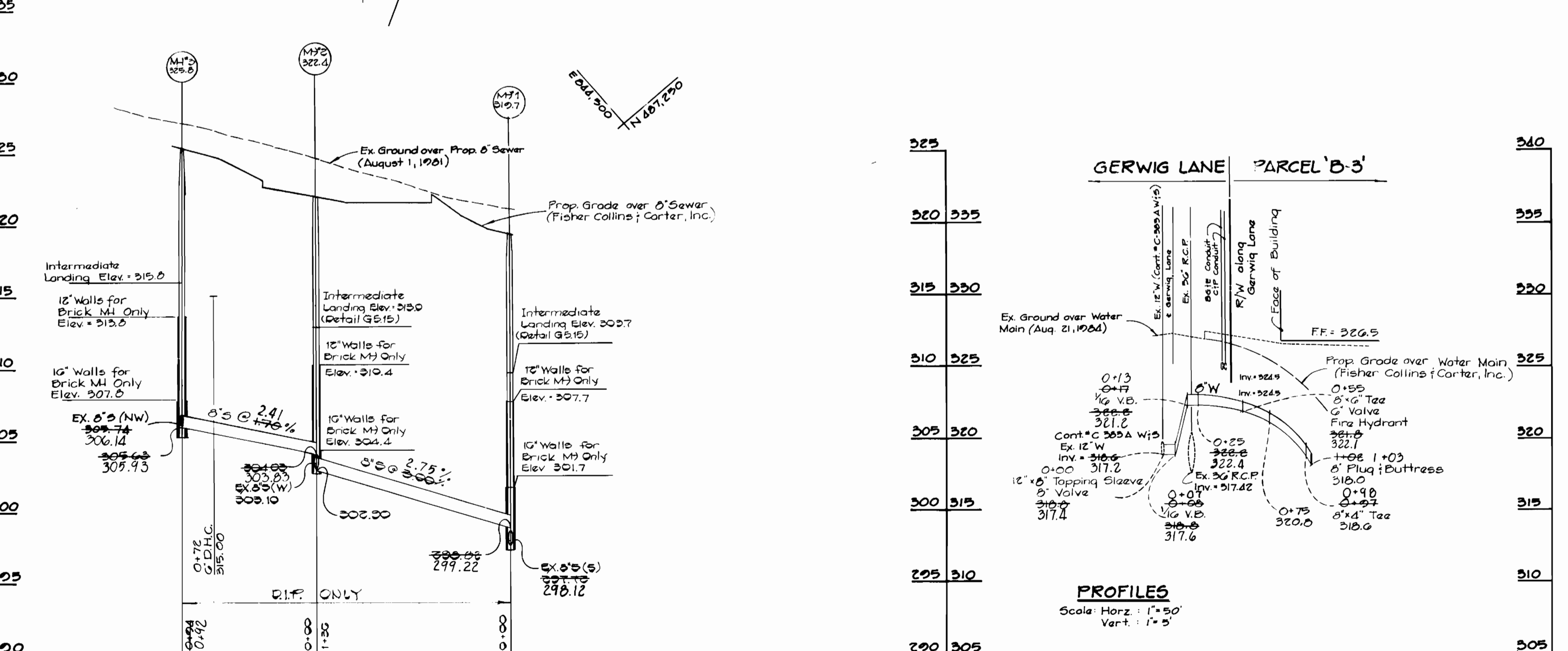
**GERWIG LANE**  
(Ex. 80' R/W)



TYPE OF BUILDINGS: WAREHOUSE  
NUMBER OF PARCELS: 1  
NUMBER OF WATER HOUSE CONNS: 1  
NUMBER OF SEWER HOUSE CONNS: 1  
DRAINAGE AREA: LITTLE FATUENT

**GENERAL NOTES**

- APPROXIMATE LOCATION OF EXISTING MAINS ARE SHOWN. THE CONTRACTOR SHALL TAKE ALL NECESSARY PRECAUTIONS TO PROTECT EXISTING MAINS AND SERVICES AND MAINTAIN UNINTERRUPTED SUPPLY ANY DAMAGE INCURRED SHALL BE REPAIRED IMMEDIATELY TO THE SATISFACTION OF THE ENGINEER AT THE CONTRACTOR'S EXPENSE.
- ALL HORIZONTAL CONTROLS ARE BASED ON MARYLAND STATE COORDINATES.
- ALL VERTICAL CONTROLS U.S.G.S. DATUM.
- ALL PIPE ELEVATIONS SHOWN ARE INVERT ELEVATIONS.
- CLEAR ALL UTILITIES BY A MINIMUM OF 6" CLEAR ALL POLES BY 2'-0" MINIMUM OR TUNNEL AS REQUIRED. ANY COST INCURRED TO THE CONTRACTOR FOR TUNNELING OR BRACING AT POLES SHALL BE INCLUDED IN UNIT PRICES BID FOR CONSTRUCTION OF THE MAIN.
- FOR DETAILS NOT SHOWN ON THE DRAWINGS USE HOWARD COUNTY STANDARD DETAILS.
- FOR MATERIAL AND CONSTRUCTION METHODS USE HOWARD COUNTY STANDARD SPECIFICATIONS.
- CONTRACTOR SHALL LOCATE EXISTING UTILITIES A MINIMUM OF TWO (2) WEEKS IN ADVANCE OF CONSTRUCTION OPERATIONS IN THE VICINITY OF PROPOSED UTILITIES AT HIS OWN EXPENSE.
- THE CONTRACTOR SHALL NOTIFY THE FOLLOWING UTILITIES OR AGENCIES AT LEAST FIVE (5) WORKING DAYS BEFORE STARTING WORK SHOWN ON THESE PLANS:  
BALTIMORE GAS & ELECTRIC COMPANY - UNDERGROUND GAS DISTRIBUTION  
CUSTOMER SERVICE: 685-0123  
BALTIMORE GAS & ELECTRIC COMPANY - UNDERGROUND ELECTRIC DISTRIBUTION  
CUSTOMER SERVICE: 685-0123  
ENGINEERING "DAMAGE CONTROL": 234-5621  
"MISS UTILITY": 1-559-0100  
CHESAPEAKE & POTOMAC TELEPHONE COMPANY: 725-9976  
BUREAU OF UTILITIES - HOWARD COUNTY: 992-2366
- TREES ARE TO BE PROTECTED FROM DAMAGE TO MAXIMUM EXTENT. TREES LOCATED WITHIN THE CONSTRUCTION STRIP ARE NOT TO BE REMOVED OR DAMAGED BY THE CONTRACTOR.
- CONTRACTOR SHALL REMOVE TREES, STUMPS, AND ROOTS ALONG LINE OF EXCAVATION AS DIRECTED BY THE ENGINEER. PAYMENT FOR SUCH REMOVAL SHALL BE INCLUDED IN THE UNIT PRICE BID FOR CONSTRUCTION OF THE MAIN.
- PLACE REGULATION "MEN WORKING" AND WARNING SIGNS AS REQUIRED TO COMPLY WITH MARYLAND STATE HIGHWAY ADMINISTRATION MANUAL OF TRAFFIC CONTROL FOR HIGHWAY CONSTRUCTION AND MAINTENANCE OPERATIONS.
- ALL SEWER MAINS SHALL BE V.C.P.X., C.S.P.X., P.V.C., OR A.C.P. CLASS 2400 UNLESS OTHERWISE NOTED.
- CONTRACTOR SHALL PROVIDE A JOINT IN ALL SEWER MAINS WITHIN 2'-0" OF EXTERIOR MANHOLE WALLS.
- ALL MANHOLES SHALL BE 4'-0" INSIDE DIAMETER, UNLESS OTHERWISE NOTED.
- MANHOLES SHOWN WITH 12" AND 16" WALLS ARE BRICK MANHOLES ONLY.
- ALL WATER MAINS TO BE D.I.P. UNLESS OTHERWISE NOTED.
- TOP OF WATER MAINS TO HAVE A MINIMUM OF 3'-6" COVER UNLESS OTHERWISE NOTED.
- VALVES ADJACENT TO TEES SHALL BE STRAPPED TO TEES.
- BLOCK ALL FITTINGS WITH CONCRETE.
- BURY LINE ELEVATIONS ON FIRE HYDRANT SHALL BE SET TO THE ELEVATIONS SHOWN ON THE DRAWINGS. ALL FIRE HYDRANTS SHALL BE STRAPPED AND BUTTRESSED WITH CONCRETE IN ACCORDANCE WITH STANDARD DETAILS. SOIL AROUND THE FIRE HYDRANT TO BE COMPACTED IN ACCORDANCE WITH SECTIONS 1003 AND 1008 OF THE STANDARD SPECIFICATIONS.
- ALL WATER HOUSE CONNECTIONS SHALL BE FOR AN INSIDE METER SETTING.
- THE CONTRACTOR SHALL NOT OPERATE ANY WATER MAIN VALVES ON THE EXISTING SYSTEM.
- WATER MAINS AND WATER HOUSE CONNECTION LINES MUST BE PLACED SO AS TO HAVE AT LEAST ONE (1) FOOT SEPARATION FROM THE SEWER MAIN OR SEWER HOUSE CONNECTION AS THEY PASS ABOUT IT.
- FOR ALL COPPER WATER HOUSE CONNECTIONS, UTILIZE FLARED TYPE FITTINGS ONLY.



ITEM	EST'D	AS-BUILT	SUPPLIER
6" SEWER	220 L.F.	220 L.F.	AAA WATER
6" SEWER	10 L.F.	10 L.F. + 10 V.F.	AAA WATER
MANHOLES	3 EA.	3 EA.	ATL. PRE. CONK
6" WATER	106 L.F.	103 L.F.	AAA WATER
6" WATER	10 L.F.	9 L.F.	AAA WATER
4" WATER	55 L.F.	54 L.F.	AAA WATER
FIRE HYDRANT	1 EA.	1 EA.	AAA WATER
12" T.E. VALVE	1 EA.	1 EA.	AAA WATER
4" T.E. VALVE	1 EA.	1 EA.	AAA WATER

SEDIMENT CONTROL MEASURES FOR THIS CONTRACT WILL BE IMPLEMENTED IN ACCORDANCE WITH ARTICLE 15 OF THESE SPECIFICATIONS AND AS SHOWN ON THE GRADING AND SEDIMENT CONTROL PLAN. (S.D.P. 84-226)

REVIEW FOR HOWARD COUNTY SOIL CONSERVATION DISTRICT AND MEETS TECHNICAL REQUIREMENTS.

APPROVED: [Signature] DATE: 4/11/84

PARCEL 'B-3'  
E.G.U. SUBDIVISION  
SECTION 2 AREA 3  
WATER AND SEWER EXTENSION  
HOWARD COUNTY, MARYLAND  
CONTRACT NO. 24-1237-D

DEPARTMENT OF PUBLIC WORKS HOWARD COUNTY, MARYLAND Director of Public Works: [Signature] DATE: 6-25-84 Chief, Bureau of Engineering: [Signature] DATE: 6/21/84 Chief, Bureau of Utilities: [Signature] DATE: 6/13/84		FISHER, COLLINS, AND CARTER, INC. CONSULTING ENGINEERS - LAND SURVEYORS 8388 COURT AVENUE ELLICOTT CITY, MARYLAND 21043 Terrell A. Fisher DATE: 4/9/84		DES: T.A.F. DRN: D.E.V. CHK: T.A.F. DATE: 4/9/84		PLAN AND PROFILE WATER AND SEWER MAINS		PARCEL 'B-3' COLUMBIA E.G.U. SUBDIVISION SECTION 2 AREA 3 SIXTH ELECTION DISTRICT HOWARD COUNTY, MARYLAND CONT. 24-1237-D		SCALE AS SHOWN SHEET 1 OF 1
--	--	--	--	---	--	---	--	---	--	--------------------------------