

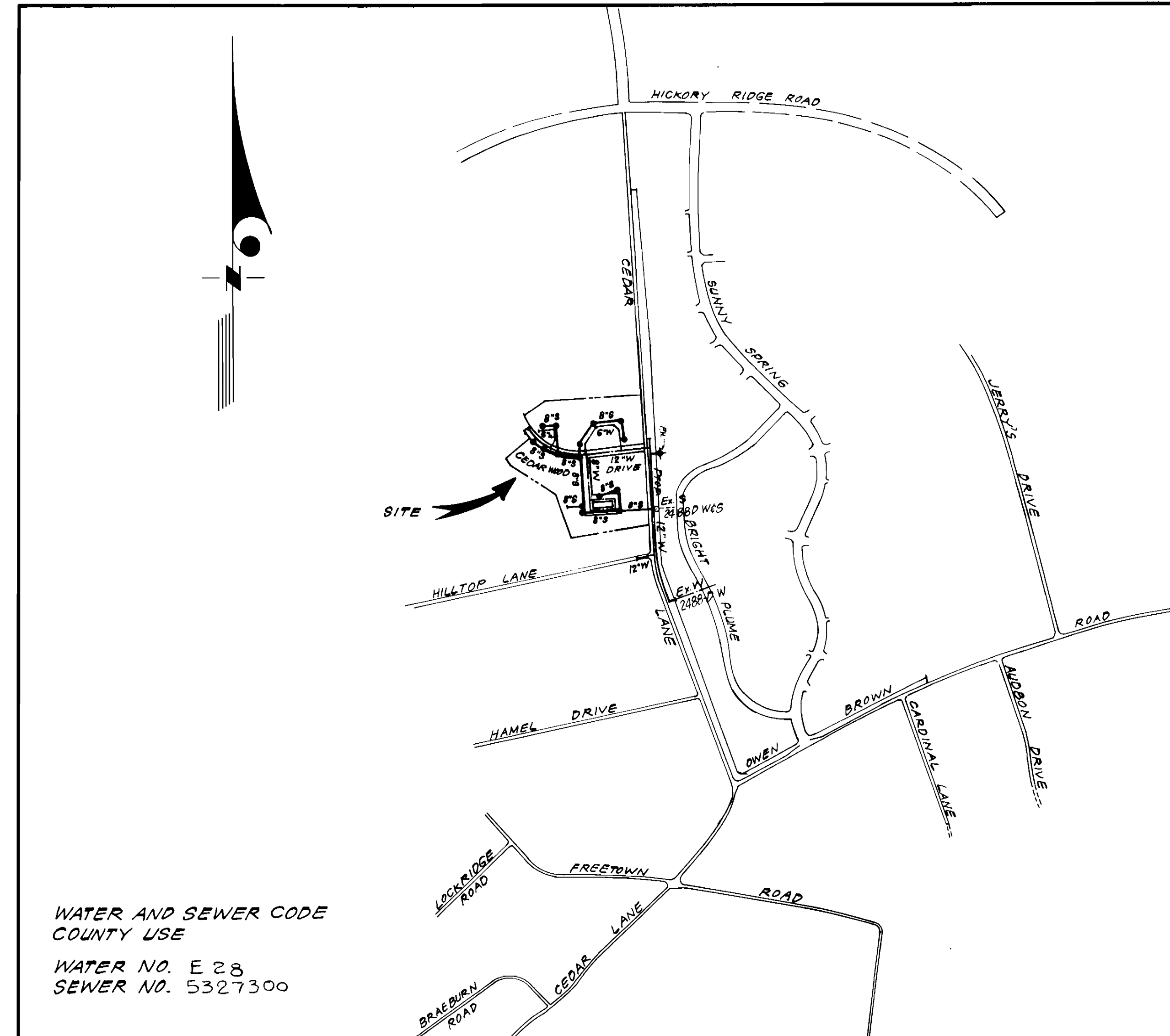
SEWER HOUSE CONNECTION TABLE

LOTS	Inv. @ R	Min. C.	LOTS	Inv. @ R	Min. C.
20/21	414.90	418.0	68/69	411.06	414.2
22/23	414.59	417.7	70/71	410.34	413.4
24/25	414.13	417.2	72/73	409.24	412.3
26/27	414.47	417.6	74/75	408.52	411.6
28/29	413.64	416.9	76/77	407.44	410.5
30/31	413.64	416.7	78/79	406.72	409.8
32/33	418.50	421.6	80/81	406.51	409.6
34/35	419.20	422.3	82/83	406.99	410.1
36/37	419.24	422.3	84/85	406.11	409.2
38/39	418.44	421.5	86/87	405.69	408.8
40/41	412.53	415.6	88/89	405.09	408.2
42/43	412.34	415.4	90/91	404.70	407.8
44/45	418.56	421.7	92/93	404.09	407.2
46/47	419.28	422.4	94/95	403.75	406.9
48/49	420.82	423.9	96/97	403.47	406.6
50/51	420.06	423.2	98/99	403.67	406.8
52/53	421.52	424.6	100/101	404.19	407.3
54/55	422.53	425.6	102/103	404.83	407.9
56/57	423.00	426.1	104/105	404.49	407.6
58/59	421.37	424.5	106/107	403.45	406.6
60/61	419.37	422.5	108/109	402.39	405.5
62/63	417.86	421.0	110/111	407.18	410.3
64/65	416.44	419.5	112/113	411.21	414.3
66/67	415.45	418.5	114/115	411.97	415.1

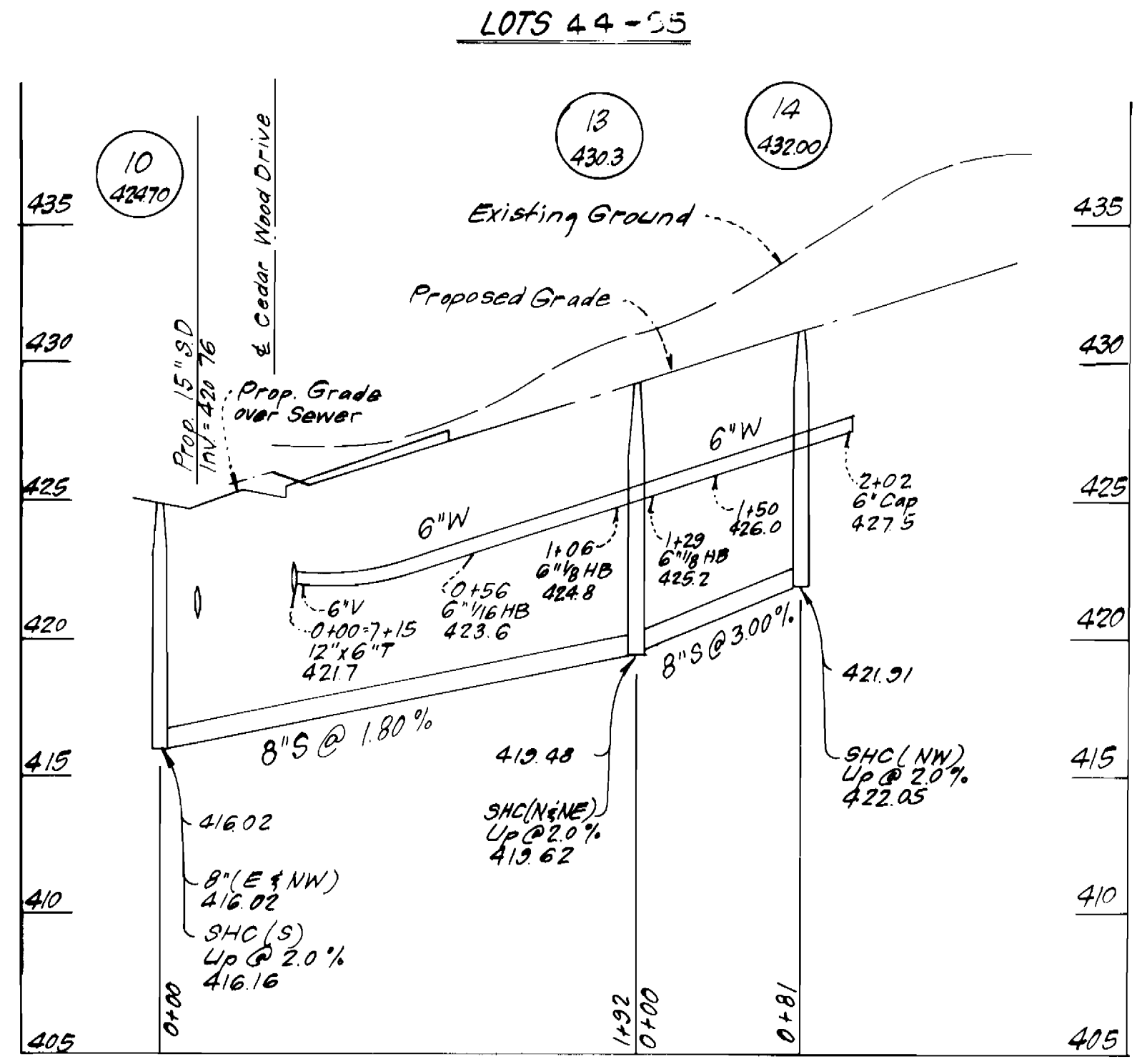
Type of Buildings	Townhouse & Single Family
Number of Lots	96 + 1 Single Family
Number of WHC	97
Number of SHC	97
Drainage Area	Little Patuxent

GENERAL NOTES

- Approximate location of existing mains are shown. The contractor shall take all necessary precautions to protect existing mains and services and maintain uninterrupted supply. Any damage incurred shall be repaired immediately to the satisfaction of the Inspector, at the contractor's expense.
- All horizontal controls are based on Maryland State Coordinates.
- All vertical controls are based on U.S.G.S. Datum.
- All pipe elevations shown are invert elevations.
- Clear all utilities by a minimum of 6" clear all poles by 2'-0" minimum or tunnel as required. Any cost incurred to the contractor for tunneling or bracing at poles shall be included in unit prices bid for excavation and backfill.
- For details not shown on the drawings, and for materials and construction methods, use Howard County Design Manual, Volume IX, Standard Specifications and Details for Construction. The Contractor shall have a copy of Volume IX on the job.
- Contractor shall locate existing utilities a minimum of two (2) weeks in advance of construction operations in the vicinity of proposed utilities at his own expense.
- Contractor shall notify the following utilities or agencies at least five (5) working days before starting work shown on these plans.
 - State Highway Administration - 531-5533
 - Baltimore Gas & Electric Company - Contractor Services - 561-2585
 - Colonial Pipeline Company - 795-1390
 - Baltimore Gas & Electric Company - Underground Damage Control - 294-5621
 - Bureau of Utilities Howard County - 992-2366
 - B. G. & E. Company Trouble Shooting - 298-9013
 - Miss Utility - 1-559-0100
 - Chesapeake & Potomac (C & P) Telephone Company - 725-9976
- Storm Drainage shall be installed prior to WHC construction.
- Trees are to be protected from damage to maximum extent. Trees located within the construction strip are not to be removed or damaged by the contractor.
- Contractor shall remove trees, stumps, and roots along line of excavation as directed by the Inspector. Payment for such removal shall be included in the unit price bid for excavation and backfill.
- Place regulation "Men Working" and warning signs as required to comply with Maryland State Highway Administration Manual of Traffic Control for Highway Construction and Maintenance Operations.
- All water mains to be D.I.P. unless otherwise noted.
- Top of all water mains to have a minimum of 3'-1/2' cover unless otherwise noted.
- Valves adjacent to tees shall be strapped to tees.
- All fittings shall be buttressed or anchored with concrete in accordance with the standards Details unless otherwise provided for on the drawings.
- Bury line elevations on fire hydrants shall be set to the elevations shown on the drawings. All fire hydrants shall be strapped and buttressed with concrete in accordance with standard details. Soil around the fire hydrant to be compacted in accordance with Section 10.03 of the Standard Specifications.
- All water house connections shall be for an inside meter setting unless otherwise noted.
- The contractor shall not operate any water main valves on the existing system.
- All sewer mains shall be C.S.P.X., V.C.P.X., P.V.C., or A.C.P. Class 2400 unless otherwise noted.
- The contractor shall provide a joint in all sewer mains within 2'-0" of exterior manhole wall.
- All manholes shall be 4'-0" inside diameter, unless otherwise noted.
- Water main and water house connection lines must have a minimum of one foot separation from the sanitary sewer and sewer house connections as they cross. Except at crossings, water and sewer lines shall have a minimum horizontal separation of 10'.
- For all Copper Water House Connections, utilize flared type fittings only.
- No work shall commence prior to approval of F-04-156 and the installation of sediment control specified therein.
- Manhole thicknesses shown on profiles are applicable to brick manholes only.



VICINITY MAP



WATER AND SEWER CODE COUNTY USE
 WATER NO. E 28
 SEWER NO. 5327300

CONTRACT NO. 24-1232-D

CEDAR ACRES
 HOWARD COUNTY, MARYLAND
 DEPARTMENT OF PUBLIC WORKS

Sediment Control Measures will be implemented in accordance with Article No. 15 of the Specifications & with Road Construction Plan E-84-156; Drawings 6 & 7 Sediment & Erosion Control.

REVIEWED FOR HOWARD SOIL CONSERVATION DISTRICT AND MEETS TECHNICAL REQUIREMENT
 Signature: *James M. Hill* DATE: 8-16-84
 U.S. SOIL CONSERVATION SERVICE

This Development Plan is approved for Soil Erosion and Sediment Control by the Howard Soil Conservation District.

APPROVED:
 Signature: *Stephen L. Fisher* DATE: 8-16-84
 HOWARD S.C.D.

ITEM	QUANTITIES		MATERIAL/SUPPLIER
	ESTIMATED	AS-BUILT	
6"W	1230 L.F.	1307	A&P. W&S Supplies Inc.
8"W	344 L.F.	332	"
12"W	2126 L.F.	2128	"
8"S	2420 L.F.	2544	"
6" Vexcl. F.H.V.	5 EA.	5	"
8"V	1 EA.	1	"
12"V	7 EA.	7	"
F.H.	6 EA.	6	"
Manhole	16 EA.	16	ATLANTIC Precast Core Corp.
1/2" Drain	1 EA.	1	A&P. W&S Supplies Inc.
3/4" WHC	2985 L.F.	2305	"
1" WHC	658 L.F.	995	"
2" WHC	168 L.F.	0	"
6" SHC	1561 L.F.	1589	"

DEPARTMENT OF PUBLIC WORKS
 HOWARD COUNTY, MARYLAND

John F. Nemy 8-27-84
 DIRECTOR OF PUBLIC WORKS DATE

William E. Riley 8/27/84
 CHIEF, BUREAU OF ENGINEERING DATE

Robert B. ... 8-24-84
 CHIEF, BUREAU OF UTILITIES DATE

William L. ... 8-24-84
 CHIEF, LAND DEVELOPMENT DIV. DATE

CLARK-FINEFROCK & SACKETT
 ENGINEERS-PLANNERS-SURVEYORS

11315 LOCKWOOD DRIVE SILVER SPRING, MARYLAND 20904
 (301) 593-3400



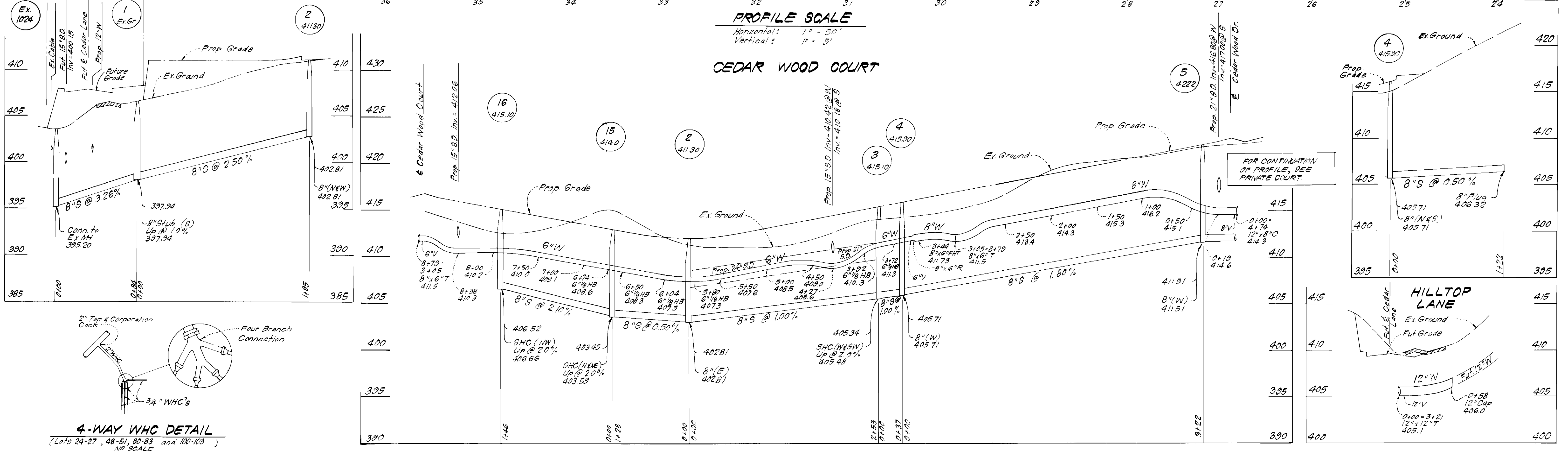
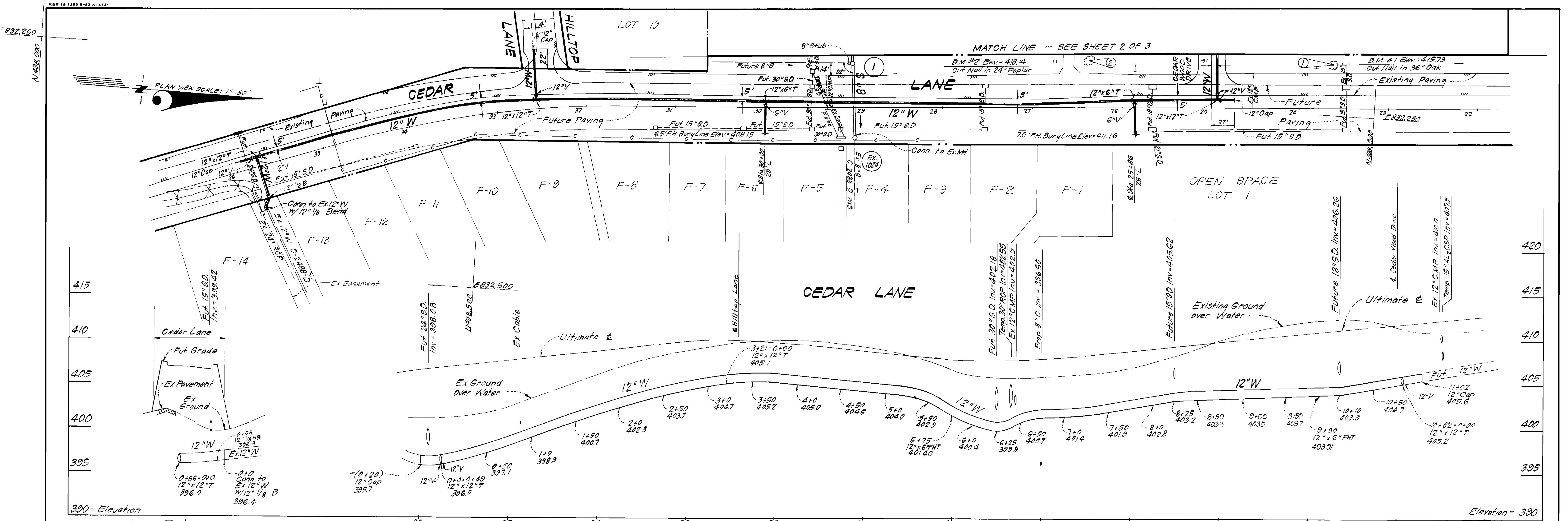
DES: C.K.G.			
DRN: V.L.B.			
CHK: C.K.G.			
DATE: 5-84	BY NO.	REVISION	DATE

VICINITY MAP AND GENERAL NOTES

600' SCALE MAP NO. 35 BLOCK NO.

CEDAR ACRES SECTION ONE
 ELECTION DISTRICT NO. 5
 CONTRACT NO. 24-1232 -D

SCALE 1" = 600'
 SHEET 1 OF 3



DEPARTMENT OF PUBLIC WORKS
 HOWARD COUNTY, MARYLAND

John F. Neuman
 DIRECTOR OF PUBLIC WORKS DATE 5/27/84

Richard M. ...
 CHIEF, BUREAU OF UTILITIES DATE 5/27/84

...
 CHIEF, LAND DEVELOPMENT DIV. DATE

CFS CLARK - FINEPROCK & SACKETT
 ENGINEERS - PLANNERS - SURVEYORS

11315 LOCKWOOD DRIVE SILVER SPRING, MARYLAND 20904
 (301) 593-3400



DES. C.K.G.	V.L.B.	1	Added 2 bend to Water Main Alignment	10/26/83
DRN. V.L.B.				
CHK. C.K.G.				
DATE: 5/84	BY NO.		REVISION	DATE

PLAN & PROFILES OF
 WATER & SEWER MAINS

600 SCALE MAP NO. 32 BLOCK NO.

CEDAR ACRES
 SECTION ONE
 ELECTION DISTRICT NO. 5
 CONTRACT NO. 24-1232 -D

SCALE AS SHOWN
 SHEET 3 OF 3

"AS-BUILT" April 23, 1985