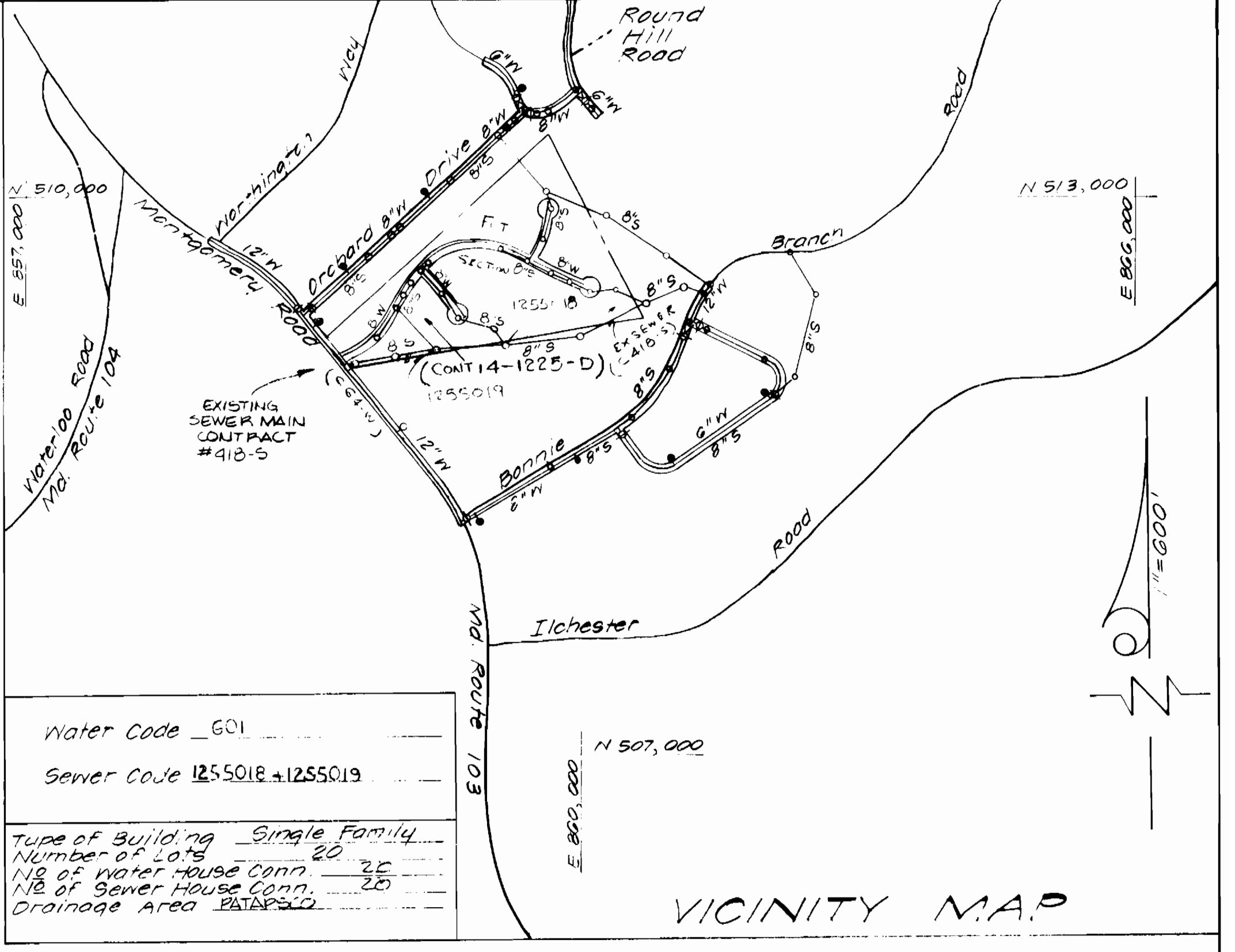
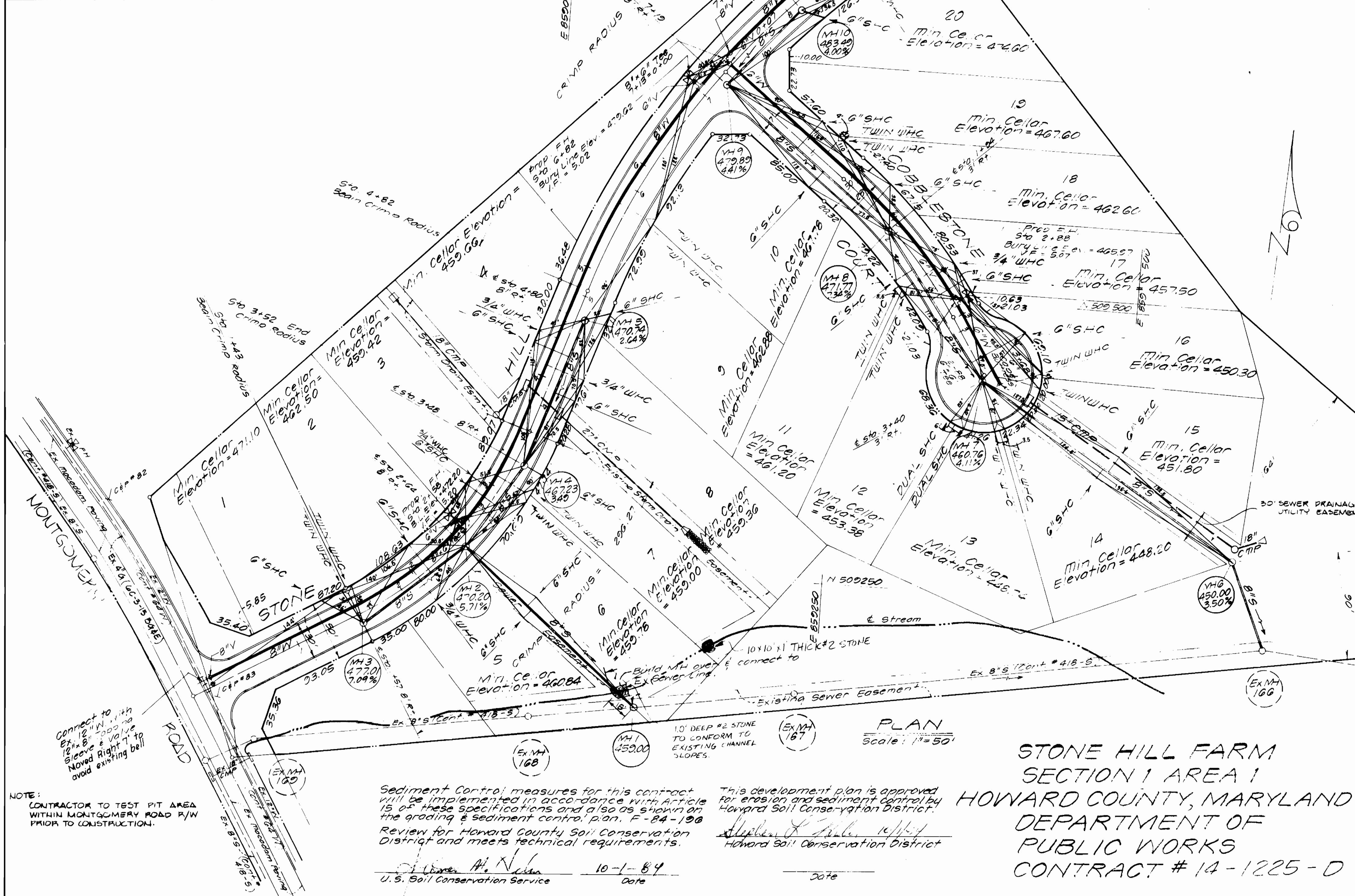


STATION	LOT	INVERT
MH 1	TO	MH 2
1+20 Left	5	456.25
1+25 Right	6	456.24
MH 2	TO	MH 3
0+37 Right	2	461.82
1+08 Right	1	469.58
MH 2	TO	MH 4
0+42 Left	3	458.49
MH 4	TO	MH 5
0+20 Right	7	458.74
0+67 Right	8	458.76
1+00 Left	4	459.88
1+37 Right	9	460.25
MH 6	TO	MH 7
1+36 Right	15	461.35
1+35 Left	1	461.25
MH 7	TO	MH 8
0+10 Left	12	469.69
0+18 Right	16	451.24
0+81 Right	17	456.10
1+12 Left	11	458.35
MH 8	TO	MH 9
0+24 Right	18	463.30
0+74 Left	10	466.15
1+04 Right	13	468.20
MH 9	TO	MH 10
0+50 Right	20	475.00

QUANTITIES				
ITEM	ESTD	AS BUILT	SUPPLIER	
8" WATER	944'	943.48	Clayton Griffin Pipe	
6" WATER	360'	360. LF	Clayton Griffin	
FIRE HYD.	3	3	US Pipe & Foundry	
1" WVC	254'	155 LF	Howell Metals Co.	
3/4" WVC	176'	150 LF	Howell Metals Co.	
8" VALVES	2	1	Mueller Co.	
6" VALVES	1	1	US Pipe & Foundry	
6" F.H. VALVES	3	3	US Pipe & Foundry	
8" SEWER	1,206.00	1,293 LF	John Manville SDR-35 PVC	
6" SEWER	725	395 LF	John Manville SDR-35 PVC	
MANHOLES	10		Atlantic Precast Conc. ASTM C478	
12" x 8" T&E	1 Ea	1	MJ US Pipe & Foundry	



- Water Code 601  
Sewer Code 125501R + 1255019
- Type of Building Single Family  
Number of Lots 20  
1/2 of Water House Conn. 20  
1/2 of Sewer House Conn. 20  
Drainage Area PATAPSCO
- GENERAL NOTES**
- Approximate location of existing mains are shown. The contractor shall take all necessary precautions to protect existing mains and services and maintain an uninterrupted supply. Any damage incurred shall be repaired immediately to the satisfaction of the engineer at the contractor's expense.
  - All horizontal controls are based on Maryland State Coordinates.
  - All vertical controls are based on U.S.G.S. Datum.
  - All pipe elevations shown are invert elevations.
  - Clear all utilities by a minimum of 6", clear all poles by a minimum of 2'-0" or tunnel as required. Any cost incurred to the contractor for tunneling or bracing of poles shall be included in unit prices bid for construction of the main.
  - For details not shown on the drawings, use Howard County Standard Details.
  - For materials & construction methods, use Howard County Standard Specifications.
  - Contractor shall locate existing utilities a minimum of two (2) weeks in advance of construction operations in the vicinity of proposed utilities at his own expense.
  - Contractor shall notify the following utilities or agencies at least five (5) working days before starting work on these plans: Balt. Gas & Electric Co. - Underground Gas Distribution - Customer Service - 685-0123; Balt. Gas & Electric Co. - Underground Electric Distribution - Customer Service - 685-0123; Engineering Damage Control - 234-6621; Miss Utility - 1-559-0100; C. & P. Telephone Co. - 725-9976; Bureau of Utilities, Howard County - 992-2366.
  - Trees are to be protected from damage to maximum extent. Trees located within the construction strip are not to be removed or damaged by the contractor.
  - Contractor shall remove trees, stumps and roots along line of excavation as directed by the engineer. Payment for such removal shall be included in the unit price bid for construction of the main.
  - Place regulation "Men Working" & "Warning" signs as required to comply with Maryland State Highway Administration Manual of Traffic Control for Highway Construction and Maintenance Operations.
  - All sewer mains shall be C.S.P.X., P.V.C., V.C.P.X., or A.C.P. Class 2000 unless otherwise noted.
  - Contractor shall provide a joint in all sewer mains within 2'-0" of exterior manhole walls.
  - All manholes shall be 4'-0" inside diameter unless otherwise noted.
  - Manholes shown with 12" & 16" walls are brick only.
  - All water mains to be C.I.P. or D.I.P. unless otherwise noted.
  - Top of water mains to have a minimum of 3'-0" cover unless otherwise noted.
  - Valves adjacent to tees shall be strapped to tees.
  - Block all fittings with concrete.
  - Bury Line Elevations on fire hydrants shall be set to the elevation on the drawing. All fire hydrants shall be strapped & buttressed with concrete in accordance with standard details soil around the fire hydrants to be compacted in accordance with Sections 1003 & 1005 of the Standard Specifications.
  - All water house connections shall be for an inside meter setting.
  - The contractor shall not operate any water main valves on the existing system.
  - Water mains and water house connection lines must be placed so as to have at least one foot separation from the sewer main or the sewer house connection as they pass above it.
  - Manholes located within proposed roadway shall have standard heavy traffic manhole frame and cover standard detail 6.5.1.
  - Manholes designated watertight manhole frame and covers, standard detail 6.5.2, where watertight manhole frame & cover is used, set top of frame 1'-6" above finished grade.
  - For all copper water house connections utilize flared type fittings only.
  - Standard pavement depth for sanitary manholes = 8'-0".

DEPARTMENT OF PUBLIC WORKS  
HOWARD COUNTY, MARYLAND

10-8-84

CHIEF, BUREAU OF ENGINEERING

EVANS, HAGAN & HOLDEFER, INC.  
ENGINEERS, PLANNERS & SURVEYORS  
8101 Sandy Spring Road  
Laurel, Maryland 20707  
WOsh. - 725-0665 BAIt - 792-8080

10-1-84

U.S. Soil Conservation Service

DES: LWC					
DRN: LWC					
CHK: JSK					
DATE: 07-12-84					
BY NO.		ADD. TO	REVISION	DATE	

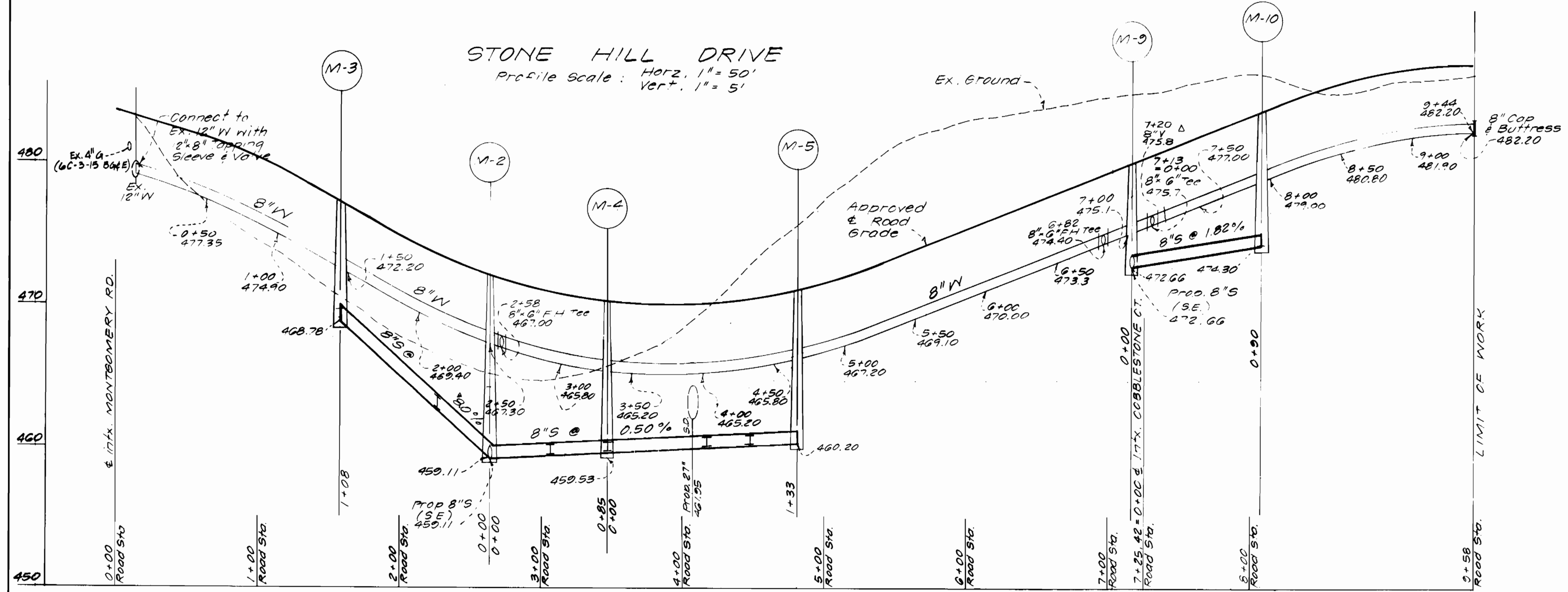
PLAN  
WATER & SEWER MAINS

600 SCALE MAP NO. 31 BLOCK NO.

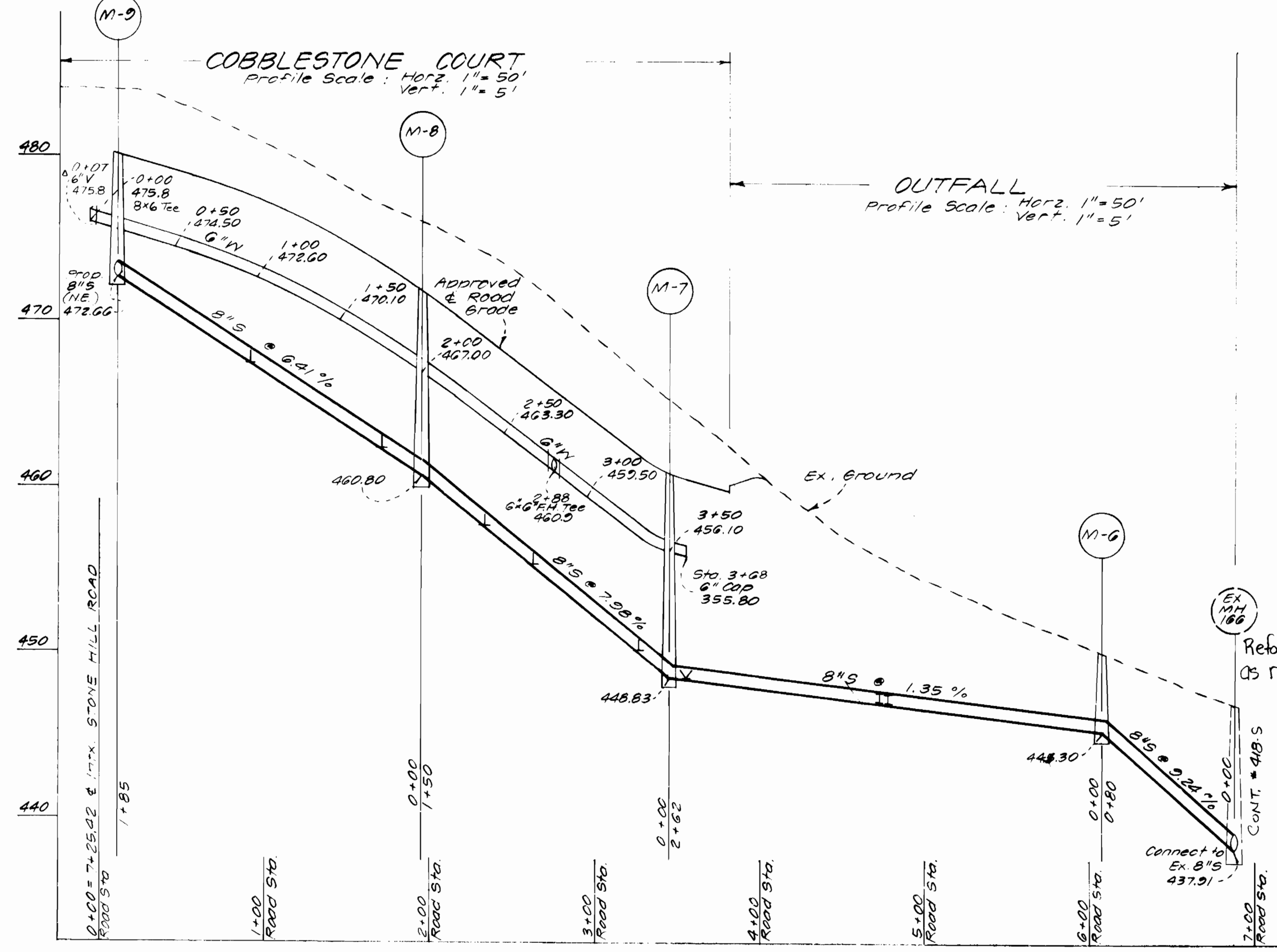
STONE HILL FARM  
SECTION 1 AREA 1  
CONTRACT # 14-1225-D  
SECOND ELECTION DISTRICT  
HOWARD COUNTY, MARYLAND

SCALE AS SHOWN  
SHEET 1 OF 2

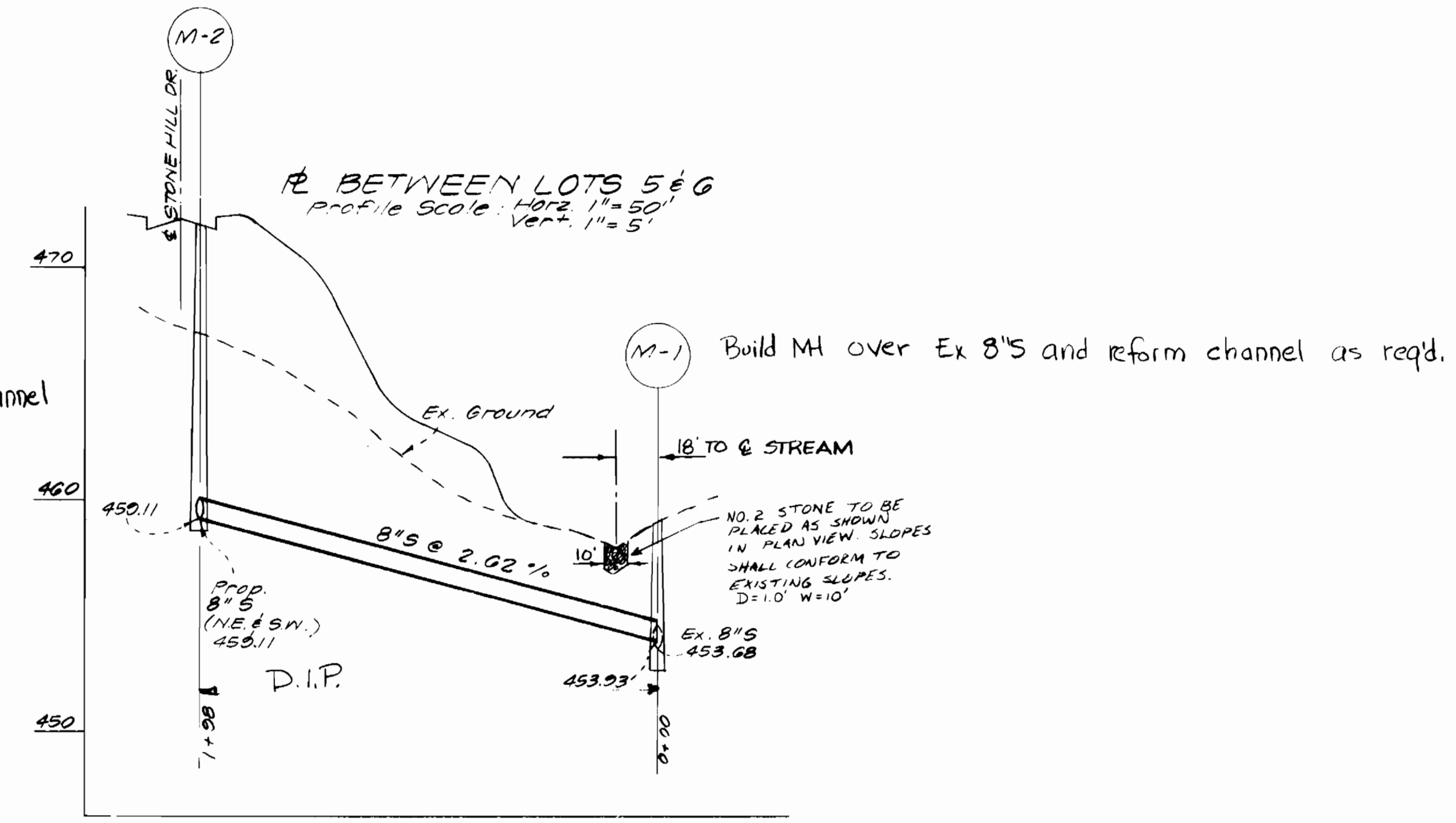
STONE HILL DRIVE  
Profile Scale: Horiz. 1" = 50'  
Vert. 1" = 5'



COBBLESTONE COURT  
Profile Scale: Horiz. 1" = 50'  
Vert. 1" = 5'



RE BETWEEN LOTS 5 & 6  
Profile Scale: Horiz. 1" = 50'  
Vert. 1" = 5'



DEPARTMENT OF PUBLIC WORKS  
HOWARD COUNTY, MARYLAND

James F. Nemmy 10-8-84  
DIRECTOR OF PUBLIC WORKS DATE  
Robert M. Berman 10-5-84  
CHIEF, BUREAU OF UTILITIES DATE

EVANS, HAEAN & HOLDEFER, INC.  
ENGINEERS, PLANNERS, SURVEYORS  
8101 Sandu Spring Rd. Suite 304  
Laurel, Maryland 20707  
Wash. 725-0665 Balt. 792-5086

Robert M. Berman  
CHIEF, LAND DEVELOPMENT DIVISION

DES: LWC			
DRN: LWC			
CHK: JBK			
DATE: 77-12-84			

PROFILES  
WATER & SEWER MAINS

STONE HILL FARM  
SECTION 1 AREA 1  
CONTRACT # 14-1225-D  
Second Election District  
Howard County, Maryland

SCALE AS SHOWN  
SHEET 2 OF 2